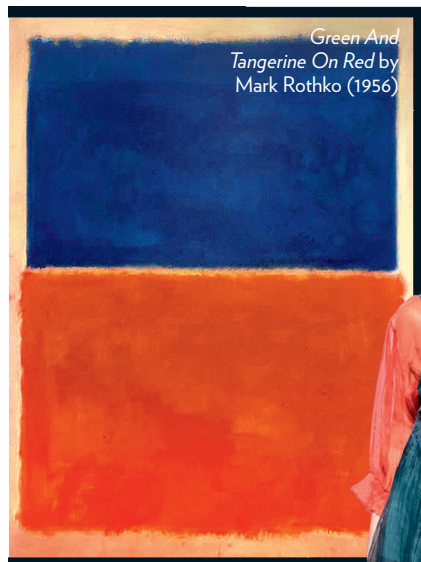


DISCIPLINES



KALLOL DATTA 1955 & 3 DIRECTIONS, KALLOL DATA

The current collection is a natural progression from the designer's own artwork, in particular a work about a textile travelling in three different directions.



EKA & MARK ROTHKO

For autumn/winter, designer Rina Singh recreated the colour contrast characteristic of Mark Rothko's works on handwoven textiles through the cut shuttle technique.



EKA



Soleil Bleu by Inès Longevial (2017)

Fashion + ART

The worlds of art and fashion have collided for decades. This season was no exception. *Vogue* matches the works to the wearable art they inspired. By MALIKA DALAMAL



TORY BURCH

TORY BURCH & PINA BAUSCH, NELKEN

Burch tapped into the drama and romanticism of Pina Bausch's *Nelken* with a runway of 14,000 pink carnations. The same shade of pink was also a key colour for the season. ■



INDIGITAL MEDIA GETTY IMAGES/ALAMY



DELPOZO & INES LONGEVIAL

Longevial's cubist portraits of feminine fixtures create the base of the season's colour palette: various hues of pink. These were mixed with ivory, camel, canary yellow, chalk blue and navy blue.



1923 Poster by Joost Schmidt (1923)

MARY KATRANTZOU & BAUHAUS EXHIBITION POSTER, JOOST SCHMIDT, 1923

Poster lithographs from the Bauhaus exhibition in Weimar inspired a range of graphic treatments, while furniture and architecture inspired sharp, reductionist lines and slender geometric silhouettes.



MARY KATRANTZOU