

# FORWARD Together.

Exploring  
new paths  
to savings



Anthem 

The path to savings ... starts with a plan

Know where you're going with our health plans.

The path to savings doesn't have to be bumpy. And we're here to make sure it's free of obstacles. You can count on us to be by your side on this guided journey with the right products, services and savings you need to stay on a clear path.

Let's explore!  
Your two paths to savings

1 Points of interest ahead.

SAVINGS

ASO option:

This option is similar to your current plan, offering network access and administrative services so your employees can get the care they need.

SAVINGS:

**\$35-40 MILLION**

annual savings projected for you by switching to Anthem.

2 Ready for the next leg of our journey? So are we!

MORE SAVINGS

Total benefit option:

This option fills in the gaps of the current MCHCP offering with a robust package of programs and services to manage your employees' health and curb spending.

SAVINGS:

Featuring the innovative Total Health, Total You solution, this option will drive an **additional \$5-10 MILLION**

in savings through increased member engagement and utilization controls.

By adding this program, we're able to provide a negative

**1% TREND** guarantee for 2020, and a

**4.9% TREND** guarantee for 2021.

This will help ensure that your **total claims cost will be lower in 2020 than in 2019**, and that the utilization reductions generated through Total Health, Total You will continue into 2021.

KEY POINTS

Fuel additional savings

- \$330,000 Universal Credit to fund technology improvements, wellness initiatives, gift card incentives, custom member communications to assist with transition/open enrollment or any other products and services that benefit members.
- Anthem will also include an additional \$45,000 pre-implementation audit fund for year one.
- 4.1% discount advantage over our competitors, giving Anthem members access to the right providers at the right price.

Go the distance with a strong network\*

- Our broad state-wide network: **99.7% Missouri Doctors** and **97.7% Missouri Hospitals**
- Our cost-saving, high performance network (HPN) of providers at preferred rates: **87.1% Missouri doctors** and **84.3% Missouri hospitals**
- And when you combine that with the power of Blue, that's a lot of power working for MCHCP. **93% doctors** and **97% hospitals** in our national BlueCard® network
- 1 in 3 Americans** is covered by Blue Health Plan
- 82 of Fortune 100** offer a Blue health plan

\*Blue Cross and Blue Shield: Blue Facts (accessed May 2019): bcbs.com.

Experienced guides for the journey

- Out of our 14-state service area, Anthem proudly supports **11 state health plans**, accounting for nearly **2.1 million members**.
- 2,500 associates** and six offices located in Missouri
- 542 public school and Municipalities** are covered
- XXX groups on-boarded** in Missouri past year
- XXX dedicated implementation manager** to guide the way
- 1.1 million Missourians** are covered by Anthem

Exploring new paths to savings

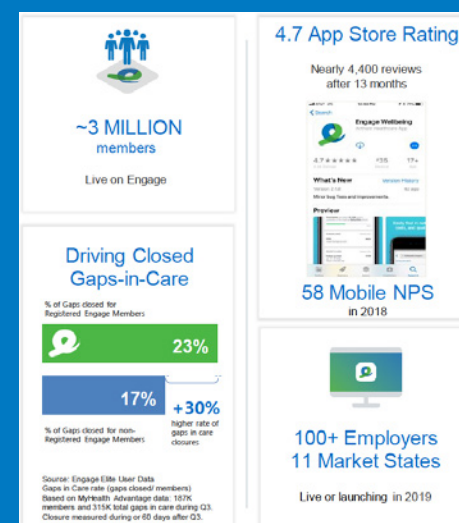
Together.



Member advocacy & incentives

To ensure your employees feel supported and healthier, Anthem is offering:

- Total Health, Total You.** This is an industry-leading, well-being focused solution for the total population that results in greater member engagement in clinical management and increased accuracy in predicting the costliest claims.
- Custom engagement platform.** This simplifies the member experience with a personalized assistant that connects employees to the right services to maximize benefits in real time.
- Anthem Health Guide.** Your employees can count on concierge-style, decision support and resources to help them find the right care and treatment options, and the right providers from a quality, safety and cost perspective.
- SmartShopper.** This rewards your employees for considering cost and quality as a component of their health care decisions, which plays a crucial role in overall savings strategy.



Anthem

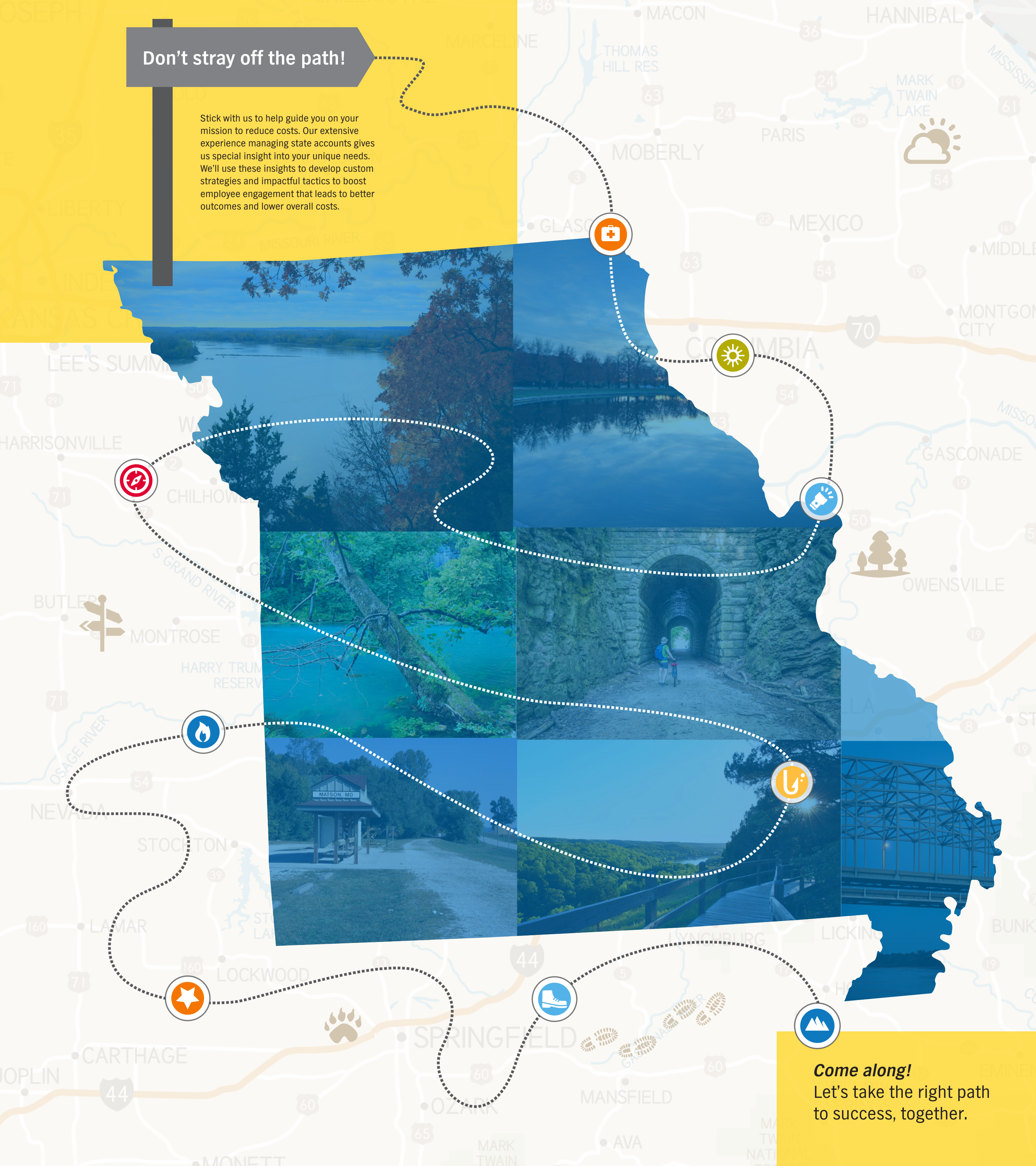
MCHCP  
my health. my choice. myMCHCP

In Missouri, (excluding 30 counties in the Kansas City area) Anthem Blue Cross and Blue Shield is the trade name of RightCHOICE® Managed Care, Inc. (RIT), Healthy Alliance® Life Insurance Company (HALIC), and HMO Missouri, Inc. RIT and certain affiliates administer non-HMO benefits underwritten by HALIC and HMO benefits underwritten by HMO Missouri, Inc. RIT and certain affiliates only provide administrative services for self-funded plans and do not underwrite benefits. Independent licensees of the Blue Cross and Blue Shield Association. Anthem is a registered trademark of Anthem Insurance Companies, Inc.



## Don't stray off the path!

Stick with us to help guide you on your mission to reduce costs. Our extensive experience managing state accounts gives us special insight into your unique needs. We'll use these insights to develop custom strategies and impactful tactics to boost employee engagement that leads to better outcomes and lower overall costs.



**Come along!**  
Let's take the right path to success, together.



Map of Missouri showing major cities and highways. Cities labeled include BUTLER, MONTROSE, HARRY TRUMAN RESER, NEVADA, STOCKTON, LAMAR, and LOCKPORT. Highways shown include 52, 71, 54, 160, and 39. A tent icon is located near Montrose, and a swimmer icon is near Nevada.

**Anthem**  

**MCHCP**

my health. my choice. myMCHCP

In Missouri, (excluding 30 counties in the Kansas City area) Anthem Blue Cross and Blue Shield is the trade name of RightCHOICE<sup>®</sup> Managed Care, Inc. (RIT), Healthy Alliance<sup>®</sup> Life Insurance Company (HALIC), and HMO Missouri, Inc. RIT and certain affiliates administer non-HMO benefits underwritten by HALIC and HMO benefits underwritten by HMO Missouri, Inc. RIT and certain affiliates only provide administrative services for self-funded plans and do not underwrite benefits. Independent licensees of the Blue Cross and Blue Shield Association. Anthem is a registered trademark of Anthem Insurance Companies, Inc.

115268MOEENABS 02/19