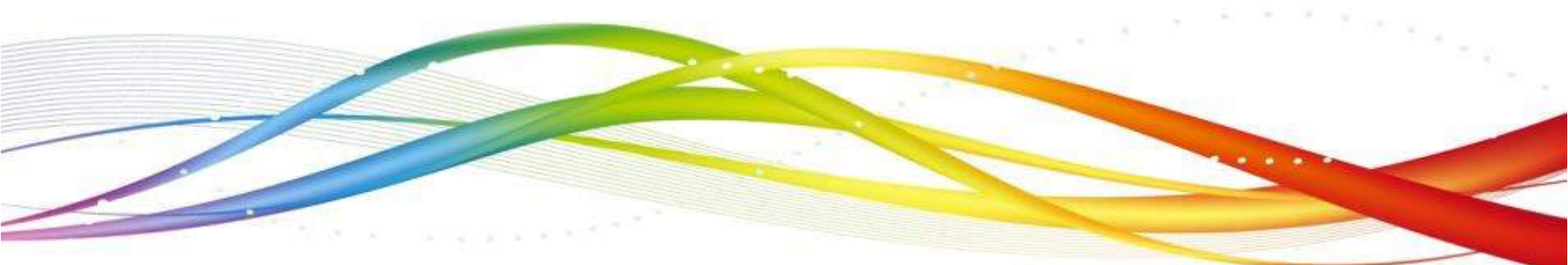


Wipro Limited - Overview

Q3 2015-16



Introduction: Defining Wipro In The Industry

Sensing The Future and Acting Today

Wipro is a global information technology, consulting, and outsourcing company recognized for its innovative approach to delivering business value and its commitment to sustainability

Wipro uses the power of emerging technologies to create breakthrough applications and solutions. We do this by sensing tomorrow and responding today

TECHNOLOGY | CONSULTING | DESIGN ENGINEERING | BUSINESS PROCESS SERVICES

Our Vision: Building Client Trust & Driving Value

To earn client trust and to maximize their business value with solutions that combine:

- Deep industry insights
- Leading technologies
- Best-in-class execution



How We Do IT: Using A Two-Pronged Strategy

Accelerating the 'Core' (RUN)

- Drive market share in our **core** businesses through integrated domain and technology services and solutions across prioritized verticals, service lines, and regions
- Own and manage clients' IT and operations estate for simplification through consolidation, elimination and automation
- Optimize costs with hyper-automation and industrialization of service delivery

Owning the 'Future' (CHANGE)

- Build digital consulting, digital assets and execution capabilities using superior data, engineering and design talent
- Create a world-class domain and technology innovation ecosystem through M&A, Wipro Ventures and NIPP*
- Drive future leadership in – IP-based solutions, XaaS, IoE, software-defined systems, open stack & AI

*NASSCOM Industry Partner program



What Guides Our Actions: The Value System

Values are Beliefs

Win with Intensity

Makes customers successful
Focused on team effort, innovation & excellence

Act with Sensitivity

Driven by respect for the individual
Always thoughtful and responsible in action

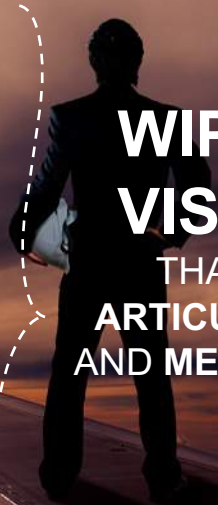
Remain Unyielding in Integrity

Delivers on commitments
Honest and fair in all engagements

- Truly global outlook
- , retains & grows people
- Collaboration-based approach
- Trusted by our customers
- Innovative
- Customer - centered
- Delivers with speed, simplicity & excellence

The seven core tenets that define our purpose and form the building blocks of our vision

**WIPRO
VISION**
THAT IS
ARTICULATED
AND MEASURED



Success Factors: Our Culture & People



People Distributed Across Regions

More than **20%** employees outside India



Diversity

100+ nationalities; **31%** women



Localization

38% local nationals (46% of sales team)



Best-In-Class Practices

- Leadership programs
- Talent acquisition processes: Mission10X, WASE
- KM processes - Winner of MAKE Awards



Business Excellence

Customer centricity, process excellence (Lean, Six Sigma), & quality systems (CMM, CMMI certified)



Recent Awards For People Approach

- Recognized as the **most ethical company** by Ethisphere Institute 2015
- Recognized as the **'best company to work for'**, among super-sized organizations in India, in the 2014 edition of Great Place To Work Institute
- Won **'NASSCOM Corporate Award for Excellence in Diversity and Inclusion 2014'**, recognized for outstanding work in the persons with disability (PwD) category
- Ranked as the top **'global R&D service provider'**, for the third successive year by Zinnov Management Consulting



Innovation Initiatives: Building A Better Tomorrow

Ecosystem

- Startups and startup ecosystem connections
- Academia, industry research, forums, professional organizations
- Government enablers (consulates, trade/investment forums)

Innovation Initiatives Internal & External to the Organization

- Ideas crowdsourcing
- Innovation crowdsourcing
- Employee involvement and engagement

Customer Co-Innovation Platforms & Processes

- iLaSer
- IdeaThon services
- Account campaign

IP and Patents

- Invention disclosures
- Inventor community



Providing An Innovative Edge: Wipro's AI Platform

WIPRO HOLMES™
ARTIFICIAL INTELLIGENCE PLATFORM

Hello Humans

I AM COGNITIVE COMPUTING. I AM HOLMES.

Care Before Healthcare



HEALTH CLAIM MANAGEMENT

Automated approval for speedier healthcare

#FUTUREISHOLMES WIPRO.COM/HOLMES



Wipro HOLMES – Artificial Intelligence Platform is a rich set of cognitive computing services for the development of:

- Digital virtual agents
- Predictive systems
- Cognitive process automation
- Visual computing apps
- Knowledge virtualization
- Robotics & drones



Our Hallmark: Proactive Sustainability Initiatives

Wipro Acknowledged As A Global Leader In Sustainability

Minimize Wipro's internal footprint on energy, water, and waste

Ecological

Work jointly with the academia & civil society networks on sustainability programs

Education & Community

Collaborate with suppliers to help them become more sustainable

Supplier

Promote employee diversity, empowerment, & continuous learning

Workplace

Provide products and solutions that enable customers to become greener

Customer Stewardship

Shape policies by engaging government, NGOs, & industry networks

Public Regulation & Policies

Our Sustainability Framework

No.1 in Dow Jones Sustainability World 2014-15 Indices





What We Offer: Service Lines & Business Units



Banking, Financial Services & Insurance



Retail, Consumer Packaged Goods, Transportation, Government and Media



Manufacturing & Hi-Tech



Healthcare, Life Science & Services



Energy, Natural Resources Utilities and Engineering & Construction



Communications



Business Application Services



Consulting Services



Business Process Services



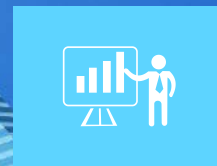
Global Infrastructure Services



Product Engineering Services



Wipro Analytics



Wipro Digital



Business Application Services

Building applications at the heart of the new age enterprise

Enhancing customer experience with commerce, collaboration, and mobile solutions

Enabling business agility through integrated platforms

Standardizing operations with 'resilient-by-design', secure and assured business processes

Leaders in

- Gartner Magic Quadrant for Application Testing Services for two consecutive years
- Forrester Wave™ Enterprise Architecture Service Providers, Q1 2015
- Forrester Wave™ Managed Security Services North America 2014
- HfS Trust-as-a-Service Blueprint 2015 - Positioned in the ' Winner Circle'
- Everest PEAK Matrix- Independent Testing Services 2015 – Leader & Star Performer





Product Engineering Services

Engineering a connected world

Smart Engineering for turnkey product development, device to cloud connectivity, connected enterprise software & product security

Smart Customer Experiences up in the air, down on the road, for your health, at work and home.

Smart Manufacturing with innovative solutions for 3D printing, smart factories & Industry 4.0



19K+
Engineers

Leader in the global ER&D service providers rating since 2009





Consulting Services

Helping provide answers that work

SIMPLIFICATION BY
DESIGN

ENTERPRISE
PERFORMANCE
MANAGEMENT

BUSINESS RESILIENCE

900+
Consultants

200+
Global customers





Global Infrastructure Services

Enabling enterprise transformation



\$ 2.5Bn Revenues
700+ Clients
30 K + Employees

20+
Alliance
Leaders in Forrester Wave™ -
Global Workplace
Services, Q4 2015





Business Process Services

Delivering next-generation business process services

Enhance customer experience
Strong focus on deepening relationships and providing better governance

Simplify processes leveraging re engineering methodologies leading to lean optimized processes

Automate Processes employing non-intrusive practices and ability to follow a proactive approach

Presence in
12
countries

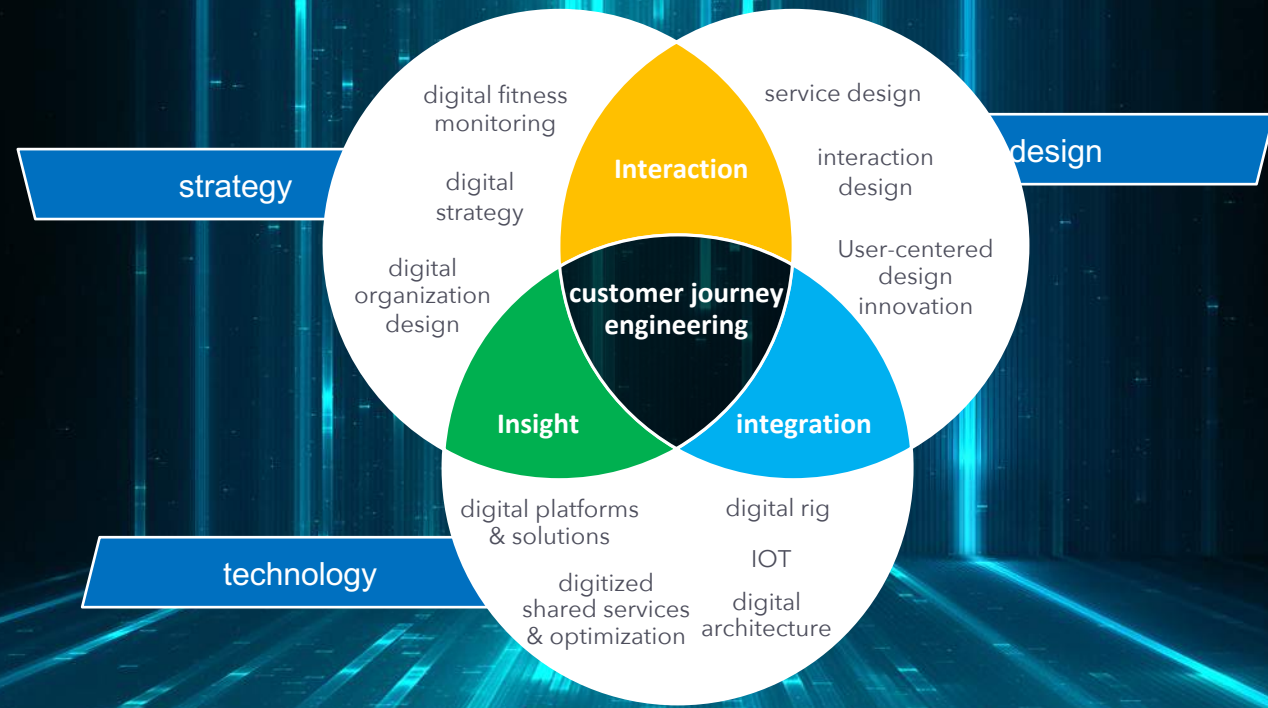
35k+
Employees

Speaking
40+
Languages



Wipro Digital

Providing transformative product-service experiences





Wipro Analytics

Delivering a full stack value proposition

WITH A FOCUS ON INTERACTIONS, INTEGRATION & INSIGHTS

Interactions:
customer journey
engineering

Integration:
digitization &
automation

Insights:
data analysis &
intelligence

Adaptive architecture & service integration

Cognitive
computing

Cloud

Smart
devices

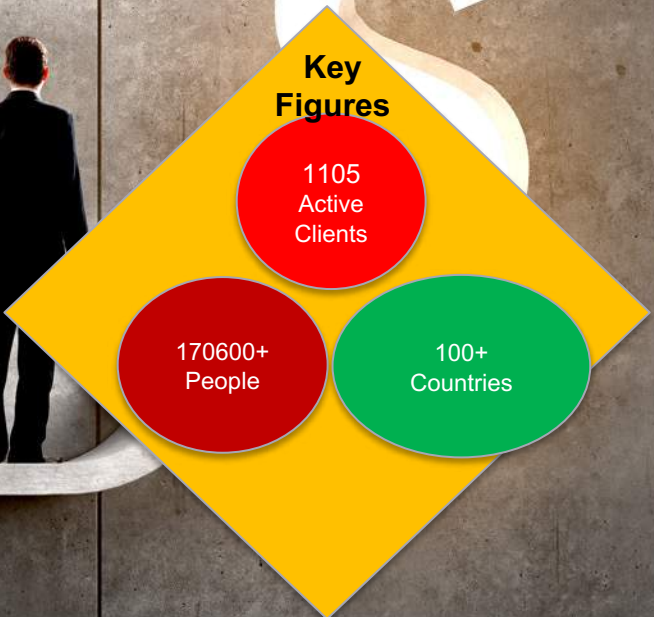
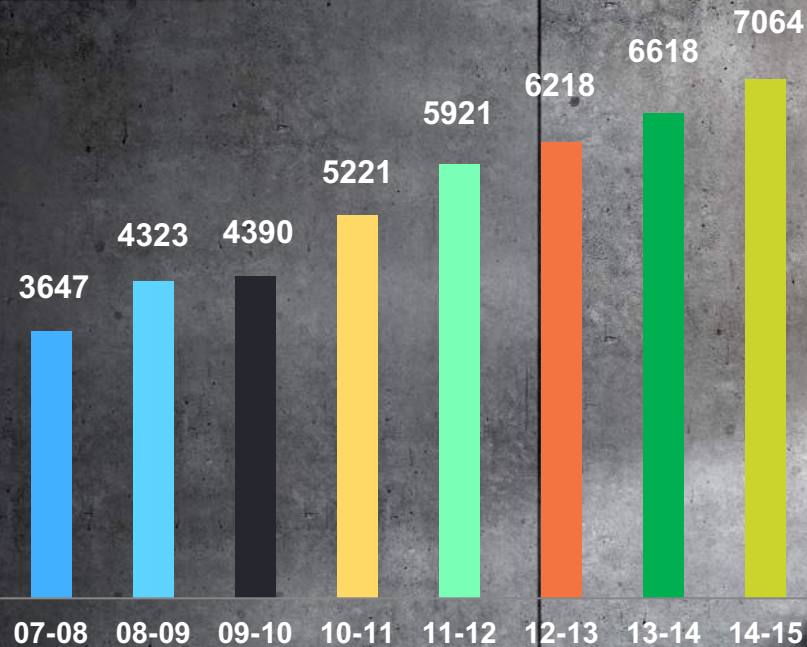
Internet
of things

Open
source

The next
disruptor

The Story So Far: Steady Year-on-Year Growth

Wipro IT Services Revenue



* In million. *FY10 onwards, the numbers are in IFRS, while the past is in IGAAP
* The annual revenue does not include IT products revenue



Global Footprint: Operating Across Six Continents

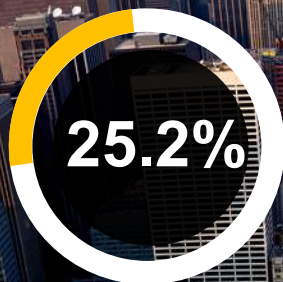
56

Countries

Global delivery centers, BPO and sales offices across six continents



AMERICAS



Europe



India & ME



APAC & Other
Emerging Markets

*Figures based on Q2 results 2015–16 for Global IT Services business




From Hardware To Transformative Experiences





Driving Force: Our Management Team



Abidali Neemuchwala
Chief Executive Officer



* These emerging business lines will continue to be mentored by TK Kurien and later transitioned to Abid as per the dates indicated



Getting Recognized: Awards & Accolades



Member Of Dow Jones Sustainability Indices
- 6th Year In A Row



Young Up-and-Coming Innovative Companies
Accredited by Boston Consulting Group in their 2014 global innovators survey



World's Most Ethical Companies
By Ethisphere Institute for the fourth successive year, 2015



Won even Awards At CIO Choice Honor & Recognition 2015



Euronext Vigeo Emerging Market Sustainability Index member (the 70 most advanced companies in the emerging markets region)



#1 Rank in the Carbon Disclosure Leadership Index (CDLI), India for the third time in succession



#1 Among 100 most sustainable companies in Asia ranking by Channel NewsAsia, Sustainalytics and CSR Asia



2015 Best Outsourcing Thought Leadership Awards (BOTL) winner by The Outsourcing Institute



Ranked 8th in the Best Companies for Leaders 2015 list in a study conducted by Chally Group



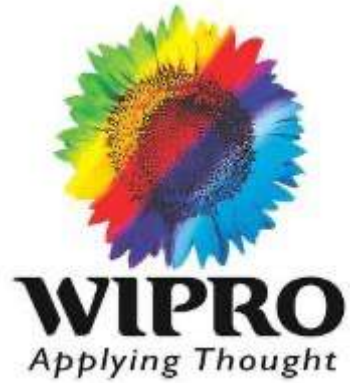
Won Asian Centre Award 2014 Company With Best CSR & Sustainability Practices



Best Company to Work For in the 2014 edition of a study conducted by Great Place To Work Institute



Top 26 most Innovative companies in 2014 across all Service Sectors and Industries by CII



Thank You

