

James Makin Gallery by Tristan Wong

Collingwood, Victoria, Australia

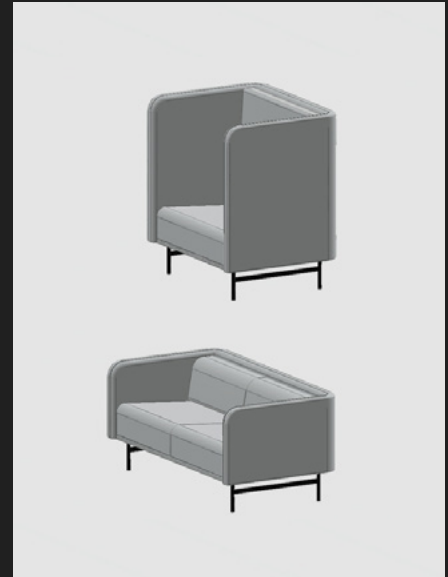
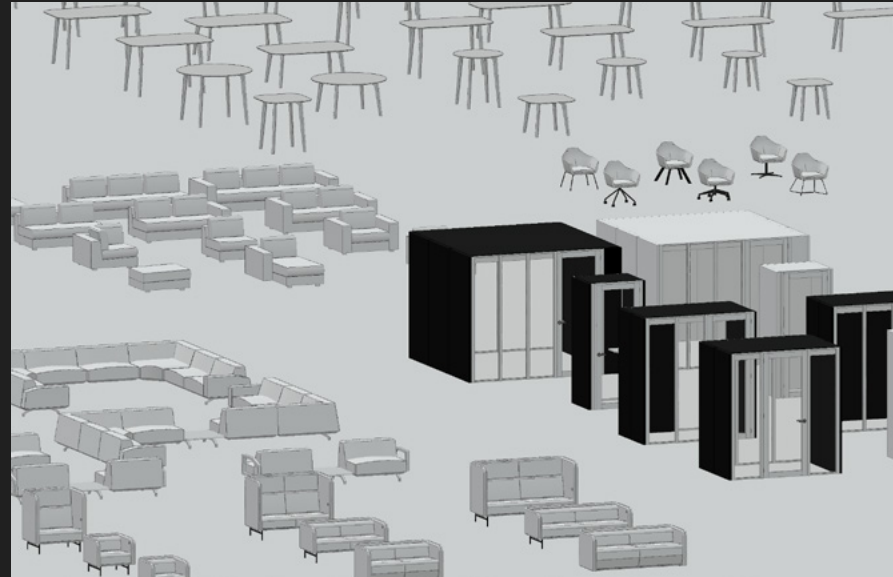
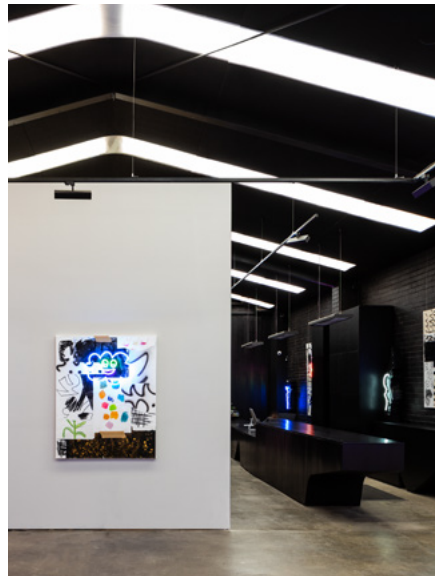
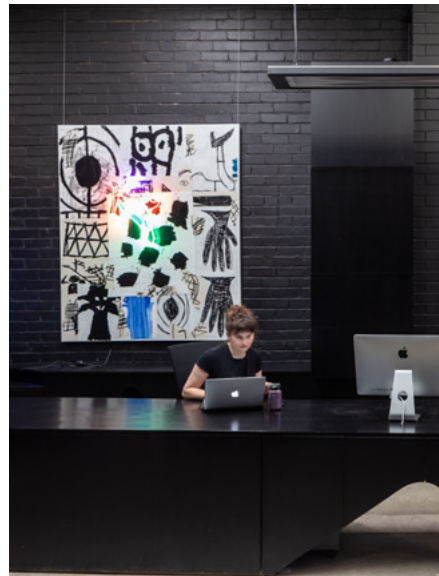
Words by Anna Tonkin • Photography by Michael Pham

The aesthetic of the white cube gallery is an enduring one. Since its rise in the early 20th century, it has been the status quo for the display of art. The question of how to deal with the prevailing condition of the white cube is an ongoing challenge for contemporary designers, curators and gallerists. Refreshingly, the James Makin Gallery in Collingwood by Tristan Wong presents a move away from the expected, instead offering a surprising take on what a gallery could be today. Tristan's design is bold yet refined, playful yet controlled.

As you enter the building, a 4.5-metre-high bent wall on your right cuts through the existing warehouse interior and defines a series of key spaces. The wall, clad in black-stained timber, guides the visitor through the entry and reception area into the subsequent spaces, which include the gallery, a viewing room and the bathrooms. The timber itself has been beautifully treated, with the grain of the wood evident through the dark stain. In addition to the striking materiality, the gallery also challenges expectations in its organisation; the viewing room is set up more like a living room with a bookshelf and alcoves for art. Providing a domestic sense of comfort, the architecture of the James Makin Gallery invites visitors to take their time.

While there is a clear intention for the gallery to look contemporary, there is also dialogue with the building's past. With the design, Tristan has referenced and highlighted elements of the existing warehouse. This is most evident in the case of the corrugated strip Laserlite roofing of the old warehouse. It has been re-lined with opaque acrylic, providing a softened glow throughout the interior. With dark panels between them, these ribbons of natural light give emphasis to the existing triangular roofline and add a sense of dynamism to the interior.

In the design of James Makin Gallery, there's interest at every level, from the detail of the timber-clad walls to the organisation and the response to the context. Tristan has challenged our ingrained views of what a gallery can look and feel like, ultimately creating an exciting home for contemporary art.



Largest of Its Kind—Schiavello's Revit Library for Commercial Furniture

Words by Vaishnavi Nayel Talawadekar • Visualisation by Schiavello

Since its inception in 1966, Schiavello has established itself as a leader in workplace design, creating and servicing ergonomic office environments that support contemporary flexibility, productivity, collaboration and wellbeing requirements. The company's five-decade-old legacy now extends into a monumental virtual library for commercial furniture—Australia's largest yet.

As a leading innovator, Schiavello has long been synonymous with forward-thinking solutions in workplace design. In a natural extension of its offerings, the brand has unveiled the largest Revit library for commercial furniture in the country. The new virtual showroom and product category library are accessible via the landing page on Schiavello's website.

Schiavello has always offered services not only as a supplier but also as a key collaborator for designers, architects, builders, project managers and facility managers, consulting closely with project teams during the planning, designing and building of a new office fit-out. Its new online library, built by Australia's leading BIM content creation specialists, IGS Group, is expected to simplify workplace design for these stakeholders by affording them seamless access to Schiavello's entire commercial furniture collection at any time, from anywhere. The ease of navigation also translates to easier communication between designers and clients, allowing for smooth sharing and comparisons and faster decision-making.

The Revit library is emblematic of the Schiavello's physical-to-digital metamorphosis,

mirroring its commitment to make each collaborative experience unique. By the same token, the company invests sizeably in research and partners with industry experts to enable a fruitful collaboration with clients during the preliminary planning stages of a fit-out. Once a spatial blueprint is in place, it works with a network of designers and business information modelling managers to curate well-appointed furniture and technology solutions, with the virtual library having a significant role to play in this process.

For over half a century, Schiavello has served thousands of brands across the office, hospitality, health, retail, residential and education industries. The Revit library serves as a welcome enabler for more in the years to come.