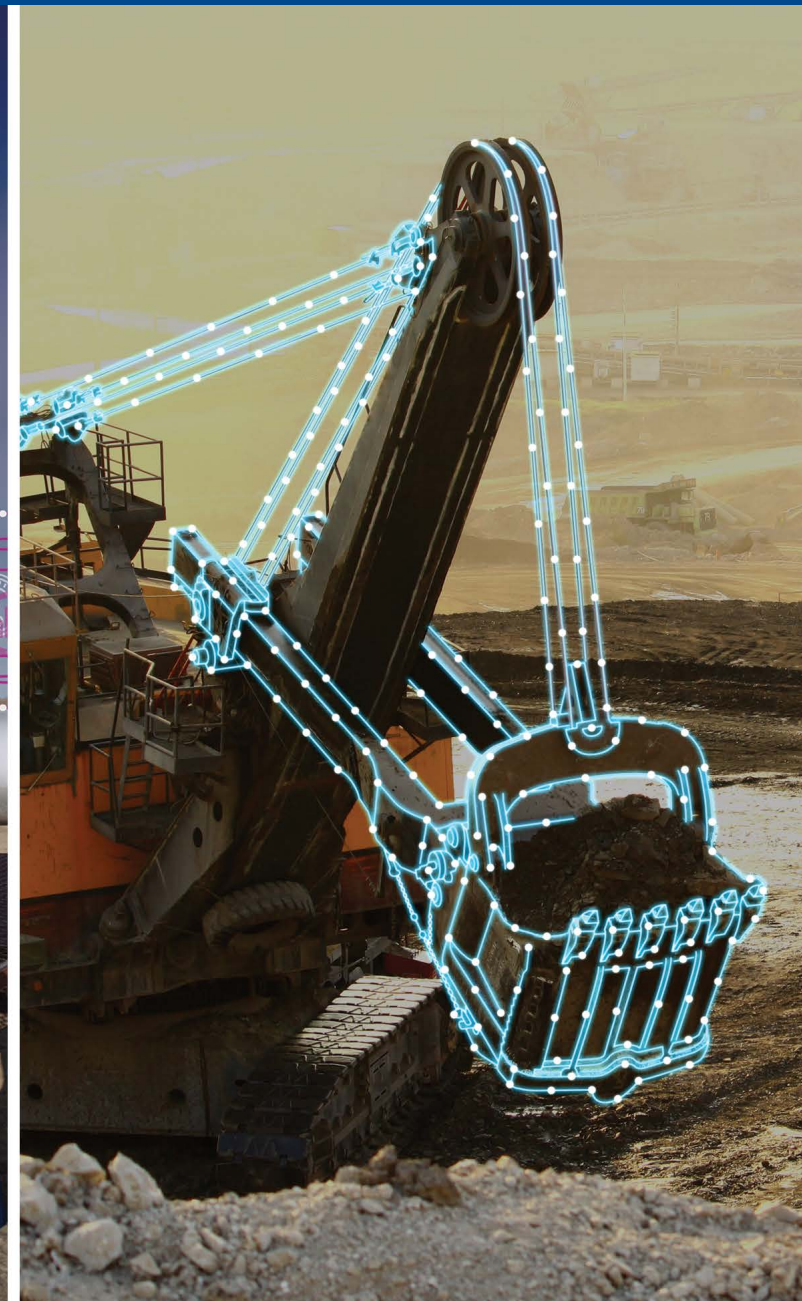
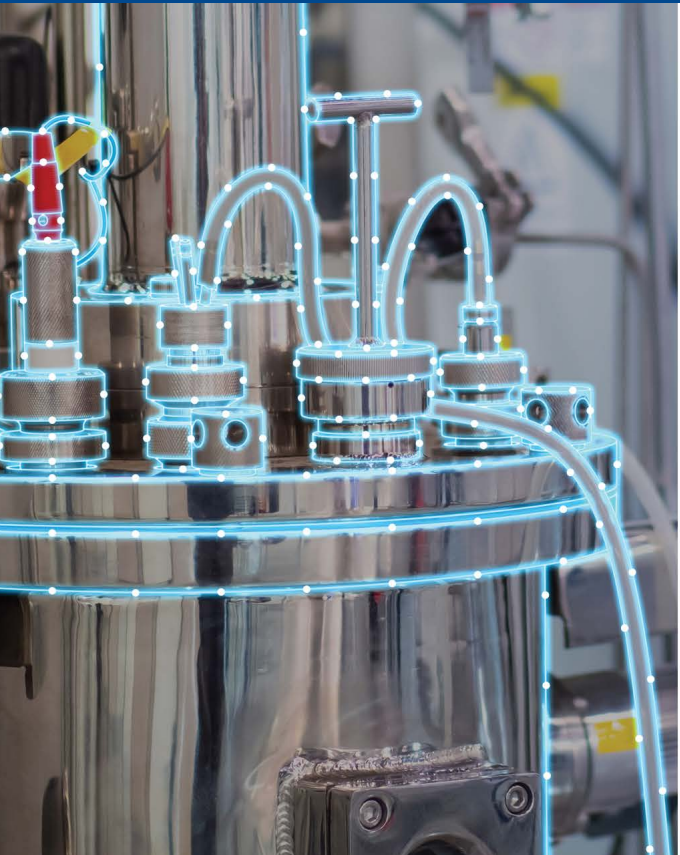
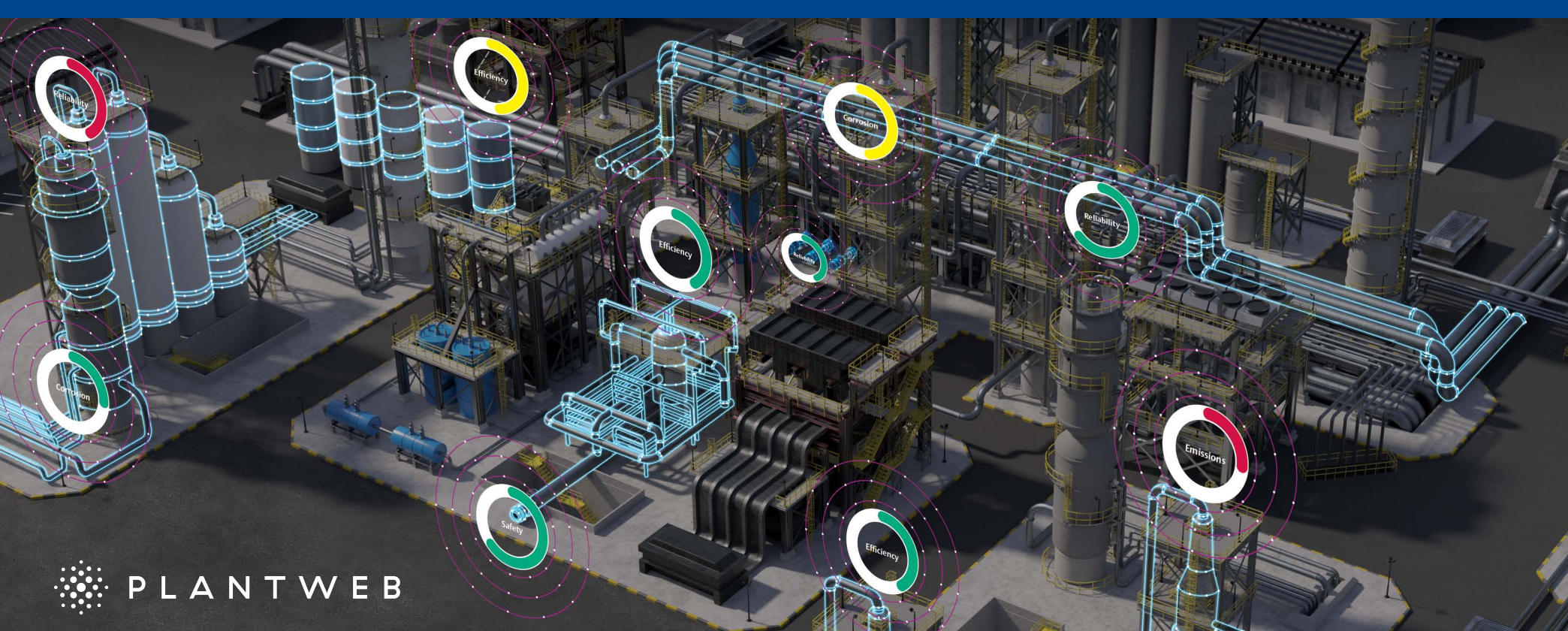


Emerson's Plantweb digital ecosystem: Making Digital Transformation Real





PLANTWEB

Plantweb's solutions are easy to integrate and quickly deliver ROI so you can navigate your digital transformation journey with confidence, ease and speed.

Digital transformation should drive performance and deliver real results

Digital transformation can propel operational performance to new levels, but only if it's done right. That means implementing digital solutions that drive tangible improvement across key areas of your operations.

Emerson's Plantweb™ digital ecosystem was designed with those goals in mind. Plantweb is a scalable and secure portfolio of transformational technologies, software and services that provide enhanced insight into assets and processes—helping you unlock the power of digital transformation across your operations and enterprise. Whatever operational challenges you're looking to address—and whatever stage of your digital transformation journey you're at—Plantweb has you covered with proven solutions that easily integrate into existing infrastructure and quickly get results.

 [Watch video](#)

Results come from implementing proven solutions that optimize production, ensure reliability, enhance safety and improve energy management.



Digital technologies should make personnel more effective, driving smarter decisions and helping diagnose and address issues before they impact operations.



A trusted partner provides services that advance digital transformation at all stages—from starting with a customized plan to implementation and continued product support.



Unlock the Data that Powers New Operational Insights

Before you can improve your operations, you need to know what's happening within your facility. Gaining that insight starts with a foundation of sensor technology that can capture the right data. With Plantweb's Pervasive Sensing™ technologies, you'll be able to cost-effectively and non-intrusively measure many process and asset variables that were previously too difficult or too expensive to measure yet have a direct impact on performance.

This enables proactive monitoring, predictive diagnostic capabilities and even improved safety, all delivered through Emerson's expanding wireless portfolio of more than **50 different solutions** and **47,000 wireless networks** across the globe. These solutions integrate with all major automation suppliers and are supported by Emerson's **4,000+ wireless experts**.



Featured solutions

AMS Wireless Vibration Monitor



Emerson's AMS Wireless Vibration Monitor helps you get ahead of failures from your rotating assets. This easy-to-install monitoring technology performs prescriptive analytics on vibration data to forecast when, how and why assets may fail—and provide actionable recommendations for addressing emerging issues.

Corrosion and Erosion Monitoring



Emerson's wireless corrosion and erosion monitoring solutions provide ongoing visibility of corrosion and erosion trends in real-time by continuously monitoring the risk and impact of pipework metal loss without having to tap inside and contact process fluid.

Emerson™ Location Awareness



Location Awareness technology helps you implement a best-in-class safety solution that protects personnel. By utilizing WirelessHART® networks along with easy-to-install, battery-powered Location Anchors and Location Personnel Tags, this solution enables relevant-time, safety-focused monitoring, enhanced geofencing and improved safety mustering.

Transform Data into Actionable Information

It's not just about what you know; it's what you do with it. Plantweb drives meaningful actions with solutions that make sense of your data, transforming it into actionable information through its comprehensive **portfolio of operational analytics**.

These analytics are powerful and intuitive software solutions that offer **new levels of visibility into your operations** by leveraging embedded domain expertise to help you solve a wide range of issues—from improving the health and performance of individual assets to overcoming more complex problems across your facility and enterprise.



Featured solutions

Plantweb™ Insight



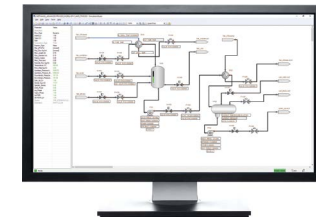
If you can't quickly analyze data from your key assets, it can be difficult to prioritize maintenance or identify potential issues. Plantweb Insight is a suite of easy-to-use, pre-packaged analytics applications that provides enhanced visibility into the condition of specific assets so you can more effectively respond to issues and prevent failures.

Plantweb™ Optics Analytics



As your operations grow in complexity, so too do your challenges. Plantweb Optics Analytics helps you tackle these multifaceted challenges by collecting and interpreting data using principles-driven analytics that can be complemented with artificial intelligence and machine-learning algorithms to uncover root causes as well as provide predictive insights and key performance indicators.

Digital Twin Solutions



Emerson's digital twin solutions help determine which adjustments to processes will improve performance by creating digital plant replicas. These virtual copies simulate a plant's data, automation systems, and process assets in real-time and allow you to supply predictive process modeling data to analytics so you can improve operational decision making.

Empower Personnel to Make Effective Decisions

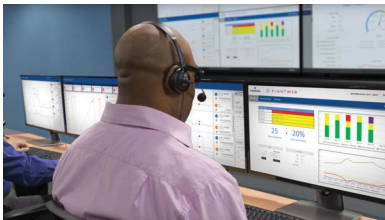
Ultimately, digital transformation is about people. IIoT technologies can dramatically change work practices for the better, but if these practices aren't embraced and adopted by your personnel, success is unlikely to happen.

Plantweb solutions empower your personnel with technologies and services that provide the **right information at the right time** so your people can shift from routine activities like data collection to more value-added activities informed by improved collaboration and enhanced insight.



Featured solutions

Emerson Connected Services



Process instability and unplanned downtime can result from a wide variety of sources. Emerson Connected Services helps avoid these disruptions with services that leverage IIoT sensing and connectivity technologies for secure, continuous monitoring of asset health and performance and access to Emerson experts who can alert you to potential equipment failures before they impact operations.

Plantweb™ Optics



Managing operations is challenging when the data you need to make decisions is siloed. Plantweb Optics centralizes asset data into one location by bringing together data from predictive intelligence applications and analytical tools to create a holistic view of asset health. It also automatically delivers relevant alerts and KPIs to appropriate teams so they can address issues more effectively.

Plantweb™ Optics Augmented Reality



Plantweb Optics Augmented Reality enhances a technician's knowledge with situational awareness, live remote assistance, and analytics. Real-time analytics, equipment health status and support documentation can be overlaid on a technician's field of view. And live remote assistance lets technicians collaborate with experts, onsite or offsite, from Emerson, their own company or another provider.

Data Integrity and Data Management: The Foundation That Makes It All Possible

When it comes to implementing effective digital transformation initiatives, your data infrastructure is critical. Emerson's data management services and technologies can help you find the data you need, prepare it for use and keep it protected.



Find it: Data identification and architecting

Getting the most out of your technology investments begins with identifying the data that will help you overcome your challenge and getting it where it needs to be. **Emerson's Data Management Integration and System Connectivity teams** can work with you to develop a low-risk project implementation strategy that prioritizes your data based on your specific use case and includes the design of appropriate network architectures and data flows to reduce complexity and provide a sound foundation for your digital transformation.



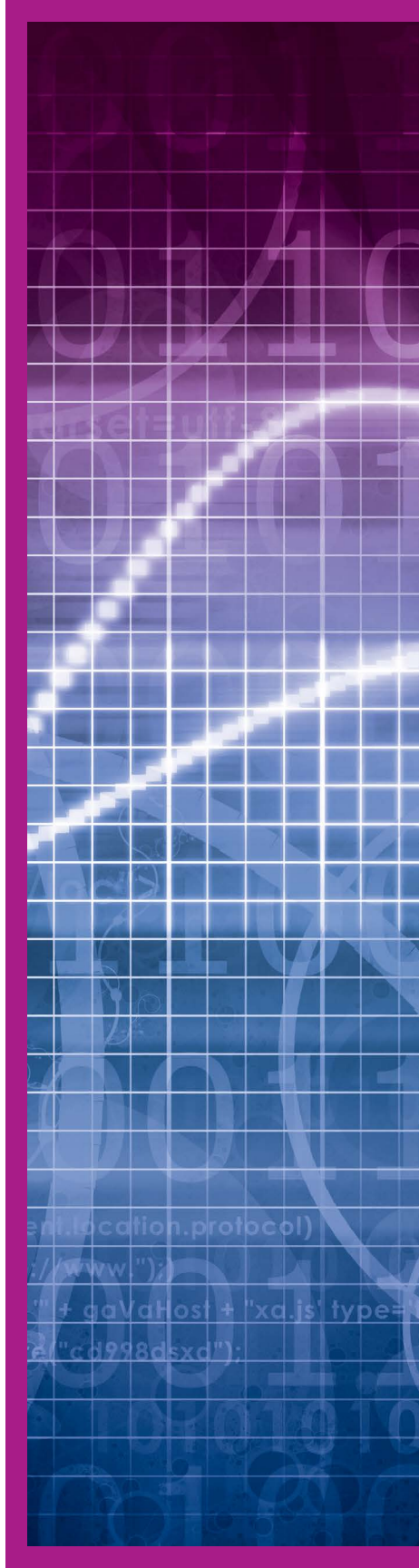
Prep it: Data ingestion and contextualization

For your data to be effectively leveraged, it needs to be easy to access and in the right format. **Emerson's Data Management Consulting Services** can work with you to securely centralize your data with technologies, such as **Emerson's Plantweb Optics Data Lake**, and convert it to common protocols so that it's ready for use. In addition, our enterprise software and services can assist in data contextualization and visualization so that you can more effectively translate your data into actionable information using the appropriate analytics tools.



Protect it: Data security and governance

Maintaining the right security posture is critical, but as more access to enterprise-level networks is required, your company's cybersecurity may be tested. By working with Emerson, you can safeguard your industrial data and processes at all stages of your digital transformation through the implementation of best practices and solutions designed with cybersecurity in mind. Our technologies and services meet the highest industry-recommended standards for security, helping you reduce overall risk and minimize impact to source systems.



Ensure Your Digital Transformation is a Success

Digital transformation doesn't just happen; it's a journey that should provide meaningful business outcomes each step of the way. That's where having a trusted partner makes a difference. Working with Emerson, you'll navigate your digital transformation journey with confidence, ease and speed thanks to Plantweb's proven, scalable solutions that easily integrate into your existing infrastructure and deliver fast, measurable results.

You'll also have access to *professional services* that can get you started, sustain your success, and enable you to easily expand for even bigger benefits. These services can support you at any stage—whether that's helping you execute a single point solution that immediately begins solving your most pressing issues or assessing your company's digital maturity to develop a strategic vision for your transformation.

However you choose to bring your digital transformation to life, you'll easily cut through the hype with technology investments that are tied to your desired business outcomes because with Emerson as your trusted partner, digital transformation is about you—and it's about results.



What digital transformation initiatives result in the biggest ROI for your company?

Check out Emerson's Digital Maturity Model Quick Index



A trusted partner can help you confidently identify and deploy proven solutions that quickly generate real results.

Get Started



Plantweb is Emerson's award-winning, digital ecosystem of transformational technologies, software and services.

Discover more about Plantweb solutions in these free, on-demand *webinars*, or visit www.Emerson.com/Plantweb.

The Emerson logo is a trademark and service mark of Emerson Electric Co. ©2021 Emerson Electric Co. All other marks are the property of their respective owners. All rights reserved.
Rev 0 / 04-21



CONSIDER IT SOLVED™