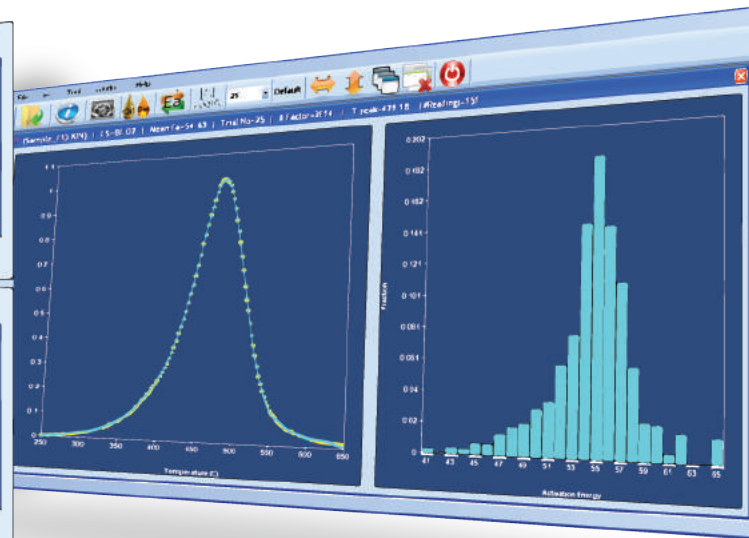
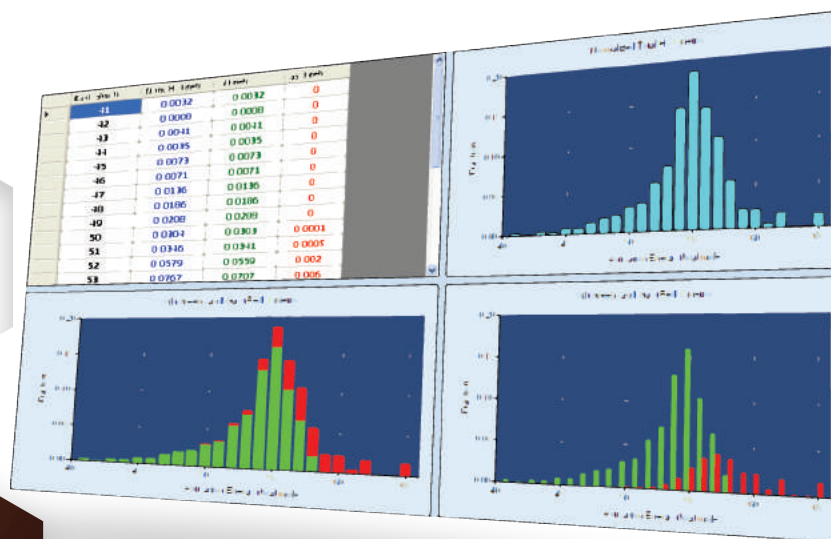




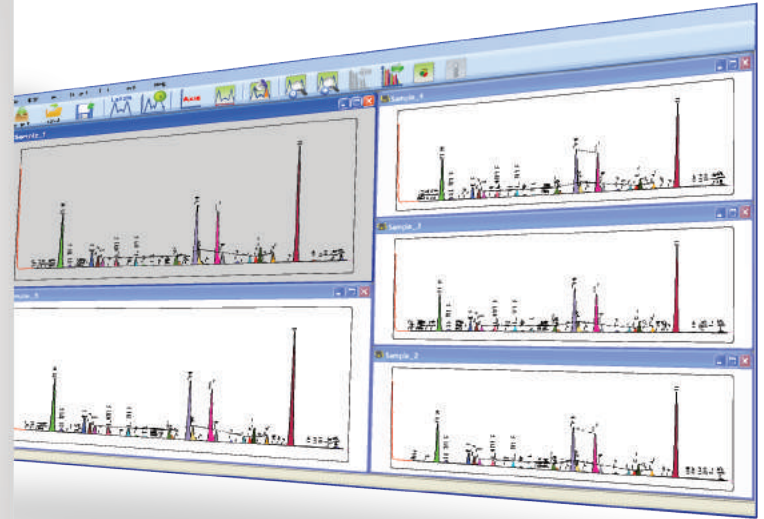
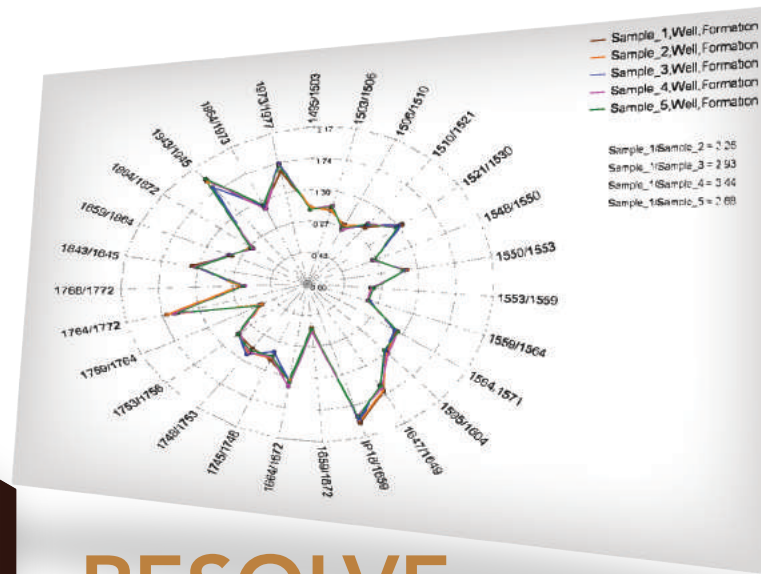
STRATOCHEM
Services



ORFA

ORFA (One Run Fixed A-factor) was created by pioneering geochemist Dr. Douglas Waples of Sirius Exploration Geochemistry and StratoChem's Hossam Ali. Designed especially for petroleum explorationists who want to determine source-rock kinetics, this software analyzes data from a single pyrolysis run using a logical, intuitive interface allowing for full customization of kinetics parameters. In addition, ORFA:

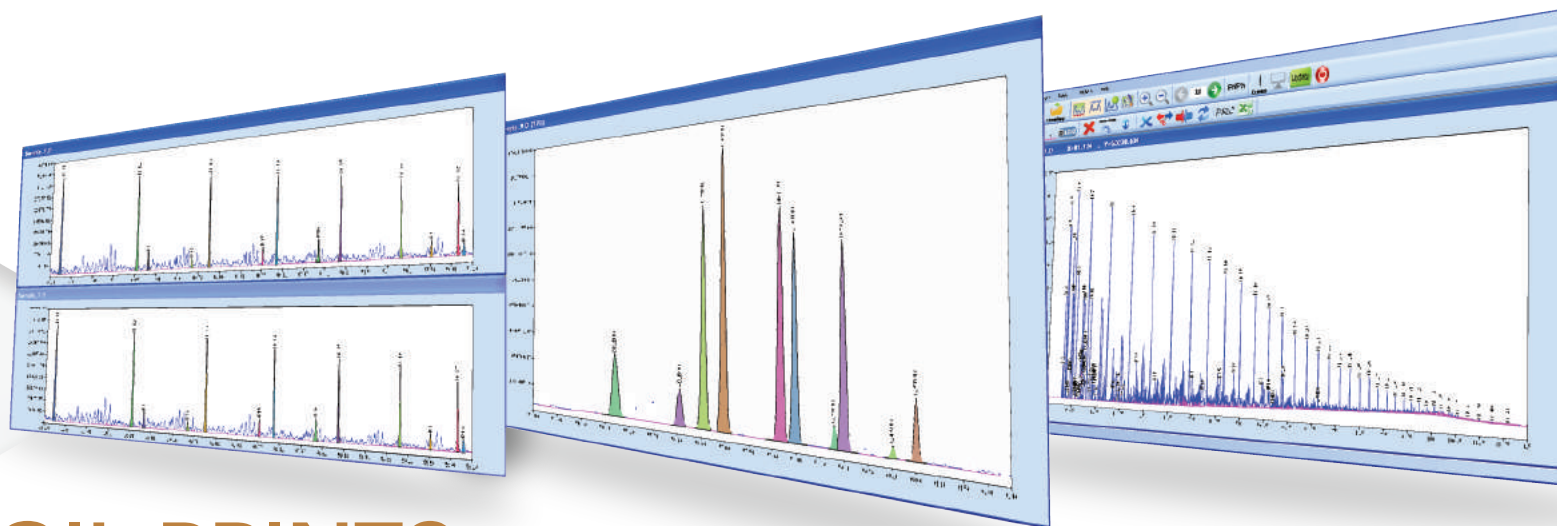
- Provides more accurate fits to pyrolysis curves.
- Allows variation of the spacing of activation energy (E_a) values.
- Predicts gas/oil ratios.
- Provides distinct kinetics for oil and gas generation, as desired.
- Permits new applications of source-rock kinetics as thermal indicators.
- Indicates unseen organofacies in apparently homogeneous rock.
- Permits the reprocessing of archived pyrolysis data to determine kinetic values.
- Gives users the option of converting source-rock kinetics derived using one A factor into-kinetics using a different A factor.
- Estimates the proportion of oil and gas generated by a kerogen based on its original Hydrogen Index (HI).
- Generates different kinetics for oil generation compared to gas generation.



RESOLVE

Designed to display the peaks generated by gas chromatography analysis without requiring the generating software, Resolve automates correlation between samples, and uses built-in algorithms to assist in reservoir continuity and commingled production allocation studies. The software is flexible, allowing users to choose diagnostic peak ratios for user-friendly pattern comparisons and reservoir production assessment. RESOLVE seamlessly allows:

- Visualization of gas chromatograms (view, format labels, coloring peaks, printing, etc.).
- Comparisons between samples to better pinpoint oil families.
- Reservoir continuity assessment.
- Allocation of commingled production for up to 8 zones.



OIL PRINTS

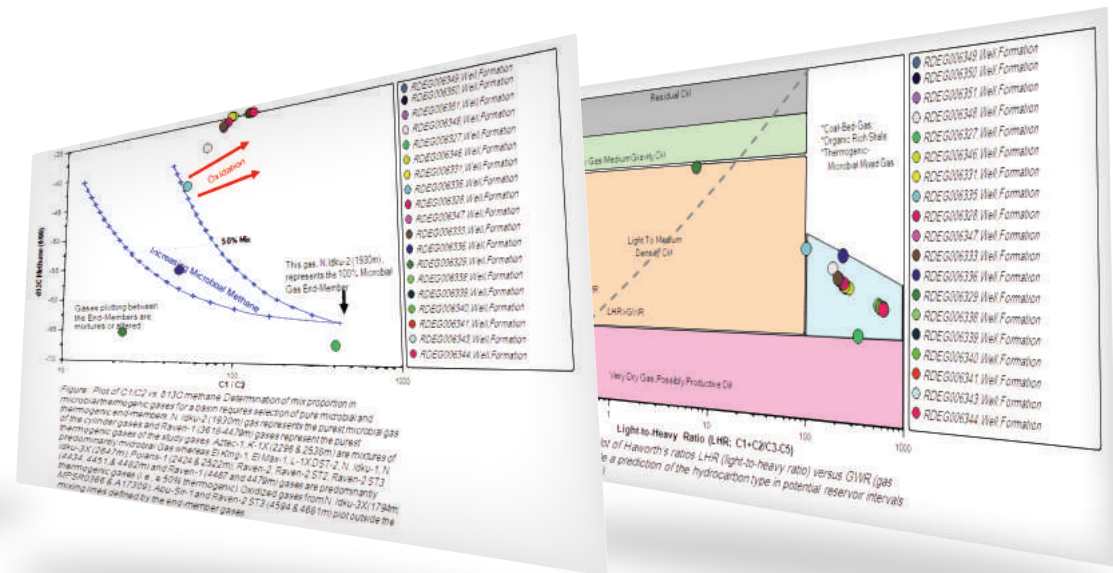
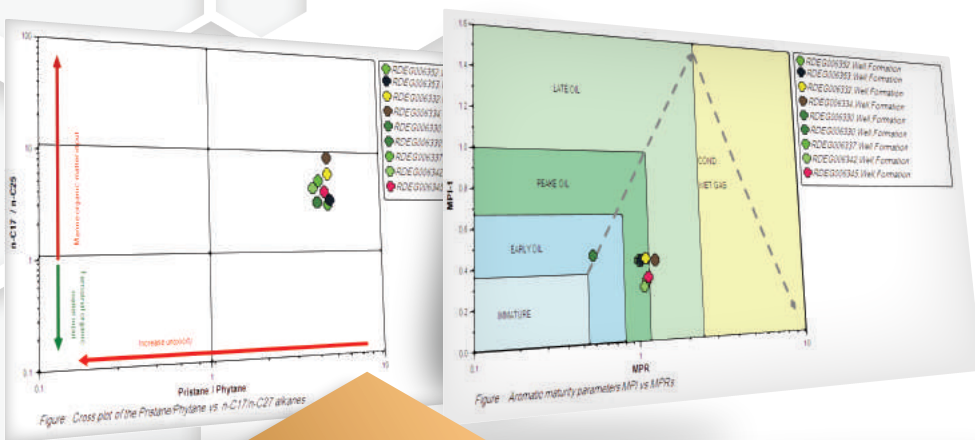
OilPrints is a powerful program designed to display data generated by gas chromatography and gas chromatography-mass spectrometry (biomarker) analysis without the need for purchasing high-priced, machine-specific software. Automating correlations between samples for greater speed and convenience, this user-friendly program is designed to easily overlay, combine, zoom, and scroll multiple GC chromatographs or GC-MS fragmentograms at one time. It also allows the viewing, labeling, coloring, and printing of chromatographs or fragmentograms with user-defined parameters, including the ability to process the sample's baseline, labels, and peaks with manual interface options that can be activated with ease and without the customary double, triple, and quadruple checks necessary in auto-saving programs.

OIL PRINTS

OIL VIEW

Using the same displays found in OilPrints, our viewer software OilView gives your team the power to compare and contrast gas chromatographs and fragmentograms of specific ions quickly and with ease. Streamlining viewing, OILVIEW automates peak comparison of data generated by gas chromatography and gas chromatography-mass spectrometry (biomarker) analysis. Acquisition software is not needed to make correlations between the samples, but OilView permits easy overlaying, combination, zooming, and scrolling of multiple data windows on one page, as well as permitting considerable user customization, including viewing, labeling, coloring, and printing of chromatographs and fragmentograms according to user-defined parameters.

OIL VIEW



HORUS

StratoChem's new plotting software, HORUS, provides basic but extensive geochemical interpretation by auto-plotting your data on a series of 70 pre-existing oil and gas templates. Horus gives users insight into the migration of hydrocarbons, the extent of biodegradation, and the identification of depositional environments in one powerful tool. Using well-documented and accepted geochemical ratios, Horus:

- Automatically exports interpretive charts to PowerPoint and Excel, cutting presentation preparation time by hours.
- Plots data from multiple basins and projects simultaneously, showing trends in thousands of data spreads at once.
- Allows adding of new templates at customer request. Horus, like all StratoChem software, undergoes constant updates to improve the quality of your team's experience.

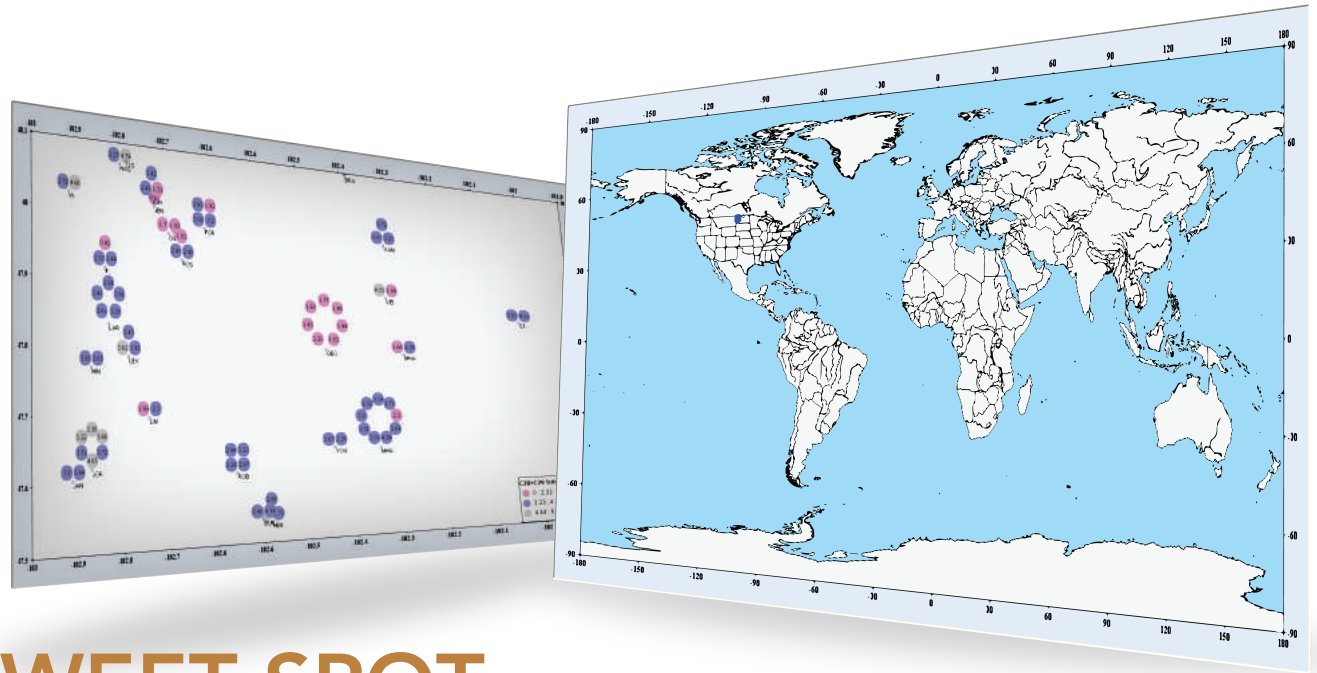


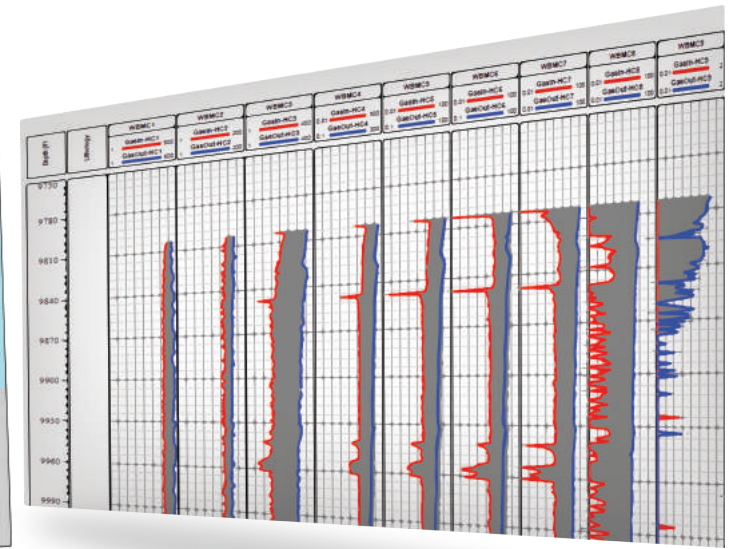
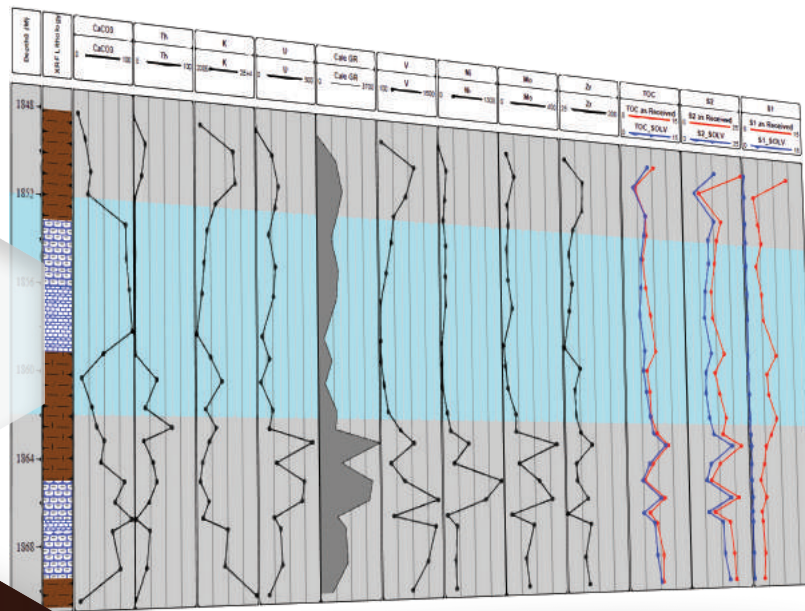
SWEET SPOT

SWEET SPOT

This powerful software gives users the freedom to plot ratios and sample parameters on a global scale, allowing easy addition of user-generated, zoomable map files and global plotting of wells, ratios, and parameters. Additionally, SWEETSPOT can:

- Import Arc-compatible shape files (.HSP).
- Export or print maps or files to PDF.
- Integrate with HORUS, creating the potential for even more powerful interpretive capabilities.
- Receive constant updates, ensuring an ever-improving user experience.





PAYZONE

This software seamlessly displays well-logs with different depths and different lithologic patterns (Default, Halliburton, and ESC), and can be modified at will. PAYZONE also creates baselines and allows tracking of windows and zones. Highly customizable and offered at a very affordable price, with PAYZONE your team can:

- Import .LAS files from a database or excel sheet.
- Log high-resolution Rockwash images with corresponding depths.
- Store unlimited built-in templates that can be saved and re-worked as needed.
- Import and automatically place gas-in and gas-out files within the appropriate log while highlighting depths.



RESOLUTION

Software Suite

Designed by StratoChem's most experienced geoscientists and programmers, our new Resolution software package was created to optimize your team's data-processing capabilities with an easy-to-use interface capable of handling a broad variety of data types. An affordable, subscription-based service, Resolution also includes live support from the very programmers who designed it.

This powerful combination package contains the entire suite of StratoChem database applications, empowering users to:

- Effortlessly track, send, and organize data.
- Search all generated data files for superior retrieval.
- Display and view well-logs with PAYZONE software.
- Plot data comprehensively and easily with HORUS.
- Examine multiple chromatographs and biomarker windows rapidly with OILVIEW GC and OILVIEW GC-MS.

Any additional software not included in the package, including ORFA and RESOLVE, can be added to the package at a %25 discount.

Multiple licenses entail a Network Floating License that permits running up to 5 instances of the software on multiple computers at a time. The software installed on a server by the licensee works simultaneously on any number of computers owned by the licensee, but no more than the defined number of instances of the program may be run at any one time. Each additional 5 instances cost an additional %50 of the original price.

Expect more than data--expect solutions

Yearly maintenance is priced at %20 of the program cost and the user will have access to all support and updates of the program(s) during the maintenance period.

ORFA, RESOLVE and OILPRINTS are independent programs that cannot be connected to the database, while PAYZONE and HORUS work independently using Excel templates or through a separate database system as in the package software.

Contact us for case studies using any of our software packages at info@stratochemlabs.com

Live presentations of our software packages are available to answer questions and explain program features, and our highly customizable software can be reformatted to fit your team's individual needs.

