

FORD **B-MAX** ACCESSORIES



Go Further

[www.ford-accessories.co.uk](http://www.ford-accessories.co.uk)



Go Further



## Personalise your B-MAX

- 4-7 Styling
- 8-9 Wheels
- 10-11 Exterior Transportation
- 12-13 Interior Transportation
- 14-15 Car Protection
- 16-17 Safety & Security
- 18-19 Comfort
- 20-21 Infotainment
- 22-23 Ford Lifestyle Collection

For the complete list of accessories visit  
the Online Accessory Catalogue.  
[www.ford-accessories.co.uk](http://www.ford-accessories.co.uk)



# Styling

Make your B-MAX stand out from the crowd with our range of high quality styling accessories. These fashionable add-ons not only look great, but are designed to help maintain the driving quality of your vehicle, keeping it in excellent condition. As a result, your B-MAX will perform as great as it looks.

◀ **Body Styling Kit**

Add extra eye-catching Bodystyling details to your B-MAX, it's a perfect match and fit for your vehicle's design.

Please ask your Ford dealer for the wide range of available accessory packs.



#### Scuff Plates

Step into your vehicle in style and protect your door sills from scratches and scrapes at the same time, with B-MAX scuff plates.

#### Rear Lower Bumper Diffuser

Give your vehicle a sportier profile and enhanced aerodynamics. Designed to enhance your vehicle's exterior styling, all our body styling parts are designed and engineered to fit your Ford perfectly and go through strict quality controls.



#### Front Bumper Skid Plate

Add an even more impressive appearance to your Ford's front end and benefit from improved aerodynamics at the same time – perfect fit and admiring glances guaranteed.



#### Roof Spoiler

Give your vehicle a sportier profile and enhanced aerodynamics. Designed to enhance your vehicle's exterior styling, all our body styling parts are designed and engineered to fit your Ford perfectly and go through strict quality controls. They not only meet Ford's own requirements for quality, durability, noise reduction, driving and handling performance, but also exceed all relevant legal requirements.

#### Body Design

	Order Code
Front Bumper Skid Plate black – Adhesive tape additionally required for installation (FINIS 1765163). Please ask your Ford Dealer for further details, up to 09/2013	1826 961
Front Bumper Skid Plate silver – Adhesive tape additionally required for installation (FINIS 1765163). Please ask your Ford Dealer for further details, up to 09/2013	1826 962
Rear Lower Bumper Diffuser black – For vehicles with parking distance control	1826 964
Rear Lower Bumper Diffuser black – For vehicles without parking distance control	1826 963
Rear Lower Bumper Diffuser silver – For vehicles without parking distance control	1826 965
Roof Spoiler – Comes primed, to be painted in body colour	1847 613

#### Interior Design

	Order Code
Scuff Plates front, with B-MAX logo – Brushed aluminium design, set of 2	1791 122
Scuff Plates rear, with B-MAX logo – Brushed aluminium design, set of 2	1791 123



## Wheels

Look and feel different with our range of alloys. All have been designed to complement the looks of your Ford. Sporty, purposeful or elegant, the choice is yours. And you can be assured that whichever alloy you choose, they've been manufactured to the highest standards, from the finest materials and endured long-term testing to keep you safe on the road. Every alloy is X-ray checked for defects and further checked to ensure no air from the tyres will be lost through the wheel. And with different styles you can be sure that the performance of our alloys is as great as their looks.

Alloy Wheels	Order Code
1 15" Alloy Wheel 5 x 2-spoke design, silver – 6j x 15", offset 37.5, fit with 195/60R15 tyre	1 812 440
2 15" Alloy Wheel 8 x 2-spoke design, sparkle silver – 6j x 15", offset 37.5, fit with 195/60R15 tyre	1 843 115
3 16" Alloy Wheel 11-spoke design, silver – 6.5j x 16", offset 40, fit with 195/55R16 tyre	1 812 530
4 16" Alloy Wheel 15-spoke design, silver – 6.5j x 16", offset 40, fit with 195/55R16 tyre	1 812 529
5 16" Alloy Wheel 5 x 2-spoke design, silver – 6.5j x 16", offset 40, fit with 195/55R16 tyre	1 808 049
6 16" Alloy Wheel 5 x 2-spoke design, sparkle silver – 6.5j x 16", offset 40, fit with 195/55 R16 tyre	1 865 265
7 17" Alloy Wheel 5-spoke Y design, silver – 6.5j x 17", offset 40, fit with 205/45R17 tyre, only in combination with steering rack limiter	1 812 531
Wheel Accessories	Order Code
Locking Wheel Nut Kit – Alloy wheel locking key set, Set of 4 incl. key, Anti-theft protection for your alloy wheels.	1 751 660
8 Wheel Cover 15" – Complete set of 4 wheel cover trims, silver, fits 15" steel wheels	1 789 720

# Exterior Transportation

Whatever you need to carry, we have a transportation accessory to make it easier and safer. Within our great choice of accessories you will certainly find the right product to suit your needs perfectly. For example, you can choose from a wide range of attachments like bike carriers, robust and spacious roof boxes, ski carriers, water sports carriers and many more. We want you and your passengers to travel in complete safety and comfort. So, why don't you let Ford carry the load?



## Thule® Touring Roof Box Range

The new roof box range Touring will replace the current Pacific range. The new range incorporates a special aeroskin lid material texture with a stylish design. Available in the following versions: 100, 200, 600 and 700.

## Thule® Bike Carrier

Take your bike with you anywhere. The universal, easy-to-install carrier is designed for easy loading and unloading of your bike. Lockable to your bike against theft.



## Roof Transportation<sup>1)</sup>

	Order Code
<b>1</b> Thule® Roof Ski Carrier Deluxe 727 – For 6 pairs of skis or 4 snowboards, lockable and height adjustable, compatible with all base carrier profiles	1301 032
<b>2</b> Thule® Roof Box Dynamic 800 – Lockable, 420L roof box, gloss black finish including interior anti-slip mat. Dimensions; 206 x 84 x 34 cm. Sporty aerodynamic streamlined design that has been optimized for air flow around the box. Fast and secure fitting using one hand. Patented Thule® dual opening feature for convenient mounting, loading and unloading from both sides of the vehicle. Maximum load capacity of 75 kg.	1746 075
<b>3</b> Roof Cross Bars silver/black – Lockable, maximum load capacity of 60 kg, weight approx. 5 kg. Roof rails (FINIS 1842746) and ditch mouldings for left and right side are required for installation (FINIS 1814109 and 1814110).	1805 838
Roof Rails silver/black – Required to fit roof cross bars (FINIS 1805838), ditch mouldings left and right required for installation (FINIS 1814109 and 1814110), Roof rail remains installed after installation	1842 746
Thule® Roof Bike Carrier FreeRide 532 – Frame holder carrier with quick-lock to ensure bikes are locked to the load carrier. Will fit most bike frame sizes up to 80mm diameter. Quick-release straps hold the wheels securely in place and are adjustable for different wheel sizes. The maximum allowed weight per bike is 17kg.	1746 077
Thule® Roof Bike Carrier ProRide 591 – One of the most convenient roof mounted bike carriers on the market. Self-adjusting frame holder can take frame sizes up to 80mm in diameter. For bikes weighing up to 20 kg.	1827 057
Thule® Roof Box Motion 200 – Black, lockable, 410L roof boxGloss black finish. Dimensions; 175 x 86 x 46 cm, patented Thule® dual opening feature for convenient mounting, loading and unloading from both sides of the vehicle. Maximum load capacity of 75 kg	1773 158
Thule® Roof Kayak Carrier 874 – For 1 kayak secured with 4 adjustable rubber and 2 x 400 cm powerful straps	1513 393
Thule® Roof Ski Carrier Xtender 739 – For 6 pairs of skis or 4 snowboards, carrier slides out for easy loading and unloading	1513 395
MontBlanc® Roof Bike Carrier Barracuda – Comfortable bike carrier, for frames up to 80 mm, designed to fit all base carrier profiles.	1225 654
Tow Bars	Order Code
<b>4</b> Tow Bar detachable – only for use with vehicle's specific electrical kit. From 07/2014 onwards.	1773 422
Tow Bar fixed – only for use with vehicle's specific electrical kit. From 07/2014 onwards.	1779 774
Electrical Kit for Tow Bar 13 pin connector – Required for fitting of fixed and detachable tow bar, including trailer rear module for trailer lighting and secure power supply for charging a battery in the trailer.	1863 426
Adapter plug for tow bar E-Kit 13 to 7 pin connector (short) – Required to connect vehicle's 13 pin tow bar with trailer's 7 pin plug.	1513 402
Adapter wiring for tow bar E-Kit 13 to 7 pin connector – Required to connect vehicle's 13 pin tow bar with trailer's 7 pin plug.	1697 945
Wire for permanent power of electrical kit – 13 pin connector.	1521 189

<sup>1)</sup> Please note: The roof load capacity of your vehicle is limited. For the maximum roof load capacity, please check your vehicle's owner's manual.

# Interior Transportation

You can travel in safety when your load is stored securely. Ford load compartment accessories are designed and tested to fit perfectly and stay in place, keeping loads where they should be even under heavy braking. Load retention guards and load retention nets, for example, are crash tested to protect passengers in a crash at up to 50 km/h (31 mph). And to help you keep the load space looking as good as the rest of your Ford's interior, we have accessories to keep it clean, dry and tidy.



## Boot Liner

Ford's anti-slip boot liners come with a durable rubber anti-slip surface to protect your boot.



## Load Retention Guard

Ford's load retention and dog guards keep your dogs and load safely inside your boot, even under heavy braking.



## Rear seat back net

A handy storage net fixed to the rear seat head restraint pillars. Complete with shoulder strap, your items can be conveniently removed and carried with ease.

## Load Compartment Organizer

Two-piece design Styrofoam box located under loadfloor. One side comes complete with cover and can be used as a passive cooling box.



Interior Transportation Systems	Order Code
Polytec® Armrest design "Pelican III" – With integrated stowage box, adjustable in height and length, armrest top is made of composition leather with a high quality stitching.	1815 000
Rear seat back net black – Fixed to the rear seat head restraint pillars, complete with shoulder strap	1801162
Umbrella Holder – Practical storage for mini umbrella, fix the box with screws or Velcro® strip wherever you find a space, all models	1524 823
Load Compartment Accessories	Order Code
Load Compartment Organizer – Two-piece, including cover for one side	1801 001
Load Retention Guard half height – Upper half gaurd, Fixed behind first seat row allowing larger loads to be retained in the rear of the vehicle, to be fitted when second row seats are folded down.	1822 690
Load Retention Guard half height – Upper part, to be fixed behind second seat row	1800 998
Boot Liner Anti-Slip, mat black – With B-MAX logo. Front 15 mm high, side 35 mm high, rear 10 mm high, with surrounding border to keep dirt on mat	1770 293
Boot Liner, mat black, with B-MAX logo – Reversible boot liner	1822 761

Please ask your Ford dealer for further details.

\* Find more information on page 23.

# Car Protection

Everyday life can bring you unexpected and unwanted surprises. Like scratches, bumps and knocks to your Ford. So why not give your Ford a little extra protection? Rear bumper protectors for example, can be fitted within seconds and provide excellent protection for years to come. And how about our floor mats, which not only match your vehicle's interior but are flame proof too?



## Rubber floor mats

Ford's rubber mats are tailor-made to fit your Ford perfectly. Fixed directly onto the floor to prevent interference with the pedals. Made for heavy duty use, they keep your vehicle's floor clean and dry. Sets are available for front and rear.



## Rear bumper protection shield

Give your vehicle a sportier profile and enhanced aerodynamics. Designed to enhance your vehicle's exterior styling, all our body styling parts are designed and engineered to fit your Ford perfectly and go through strict quality controls.

## Mud flaps

Ford mud flaps are designed specifically for your car. They protect your Ford and help to maintain its residual value, by reducing road spray and dirt and by preventing damage from stones.



Exterior Protection	Order Code
Mud Flaps front - Contoured, set of 2.	1800 024
Mud Flaps rear - Contoured, set of 2.	1800 023
Rear Bumper Protection Shield, polished stainless steel. Adhesive tape additionally required for installation. Please ask your Ford Dealer for further details.	1765 363
Interior Protection	Order Code
Floor Mats, premium velour front, black – Set of 2	1858 425
Floor Mats, premium velour rear, black with single stitching – Set of 2	1789 017
Floor Mats, premium velour rear, black with double stitching – Set of 2	1789 508
Floor Mats, standard carpet front and rear, black – Set of 4, driver's mat with reinforced contact area reducing wear and tear effectively	1858 178
Rubber Floor Mats front, black – Contoured, set of 2	1801 451
Rubber Floor Mats rear, black – Contoured, set of 2	1781 386

Please ask your Ford dealer for further details.



# Safety & Security

Your children deserve to be as comfortable and safe as you are when they're travelling in your Ford. So Ford offers a range of child seats, from our approved suppliers Britax Römer®\* and Recaro®, for all ages from babies to young children. Designed to meet the highest safety standards, they are thoroughly crash tested. There is also a great selection of Britax Römer®\* ISOFIX child seats, which are quick and easy to fit correctly and safely, to the ISOFIX points built in to various Ford models. All Britax Römer®\* premium quality child seats are equipped with comfortable high quality covers which can be easily removed for washing.

## Britax Römer® Child Seat

Ever since it became a legal requirement for children to be safely secured when travelling in cars, the standards for children's car seats have become more and more stringent. We offer child seats for all weight categories - for babies and toddlers up to 36 kg, which are all tested and approved to European standard ECE 44/04.



### Premium Safety Pack

This pack includes one warning triangle, one warning vest, one pair of gloves and first aid kit.

Child Safety	Order Code
Britax Römer® Child Seat BABY-SAFE ISOFIX base – For children up to 13 kg, the infant carrier simply clicks in and out, fixed to the ISOFIX connection points in your vehicle, rebound bar ensures secure fitting and reduces movement, with integrated foot prop for extra stability.	1670 734
Britax Römer® Child Seat BABY-SAFE plus – For children up to 13 kg, with bars to fix the seat onto the ISOFIX base, 5-point safety harness and padded headrest with integral cushion, can be adjusted in 3 different positions, including sun and wind canopy.	1670 717
Britax Römer® Child Seat DUO plus ISOFIX – For children between 9 – 18 kg, 5-point harness system with central belt length adjustment.	1448 154
Britax Römer® Child Seat KID 07 – For children between 15 – 36 kg, optimum side impact protection, headrest can be adjusted in 11 different positions.	1673 415
Britax Römer® Child Seat KIDFIX – For children between 15 – 36 kg, seat is always fixed by the ISOFIX anchor points, optimum side impact protection, headrest can be adjusted in 11 different positions.	1581 116
Roadside Assistance	Order Code
Jump Leads 3 m – Battery jumper cable, for petrol engines up to 2.5 l	5 023 562
Jump Leads 3.5 m – Battery jumper cable, for diesel engines up to 3 l	5 023 563
Life Hammer – Including bracket, to provide secure and safe fitting, with fluorescent button so that it can be quickly located, when required	1761 591
Premium Safety Pack – Compact soft blue bag, dimensions 440 x 100 x 90 mm. Contents include: one warning triangle, one orange warning vest, one pair of gloves and first aid kit.	1781 293
Tow Rope for up to 2,500 kg	5 011 184
Warning Vest yellow – One size fits all. With High Visibility stripes	1378 052



\* Find more information on page 23.



# Comfort

All Ford vehicles are designed to make your life as relaxing as possible. Now with our accessories you can add even more convenience to your journey. From wind deflectors that enable you to enjoy a refreshing breeze with less turbulence and noise, to a range of cooling boxes for self-catering, we surround you and your passengers with total Ford comfort – and when you finally reach your destination, our parking distance controls will safely guide you into your parking space.

## Polytec\* Armrest

With integrated stowage box. Adjustable in height and length. Includes 4 screws for fitting. Armrest top is made of composition leather with a high quality stitching.

## Xvision\* Parking Distance Control

Take the stress out of parking. With bigger vehicles, tighter parking spaces and Britain's increasingly busy roads, Xvision\* parking distance sensors turn reversing, parking and manoeuvring in confined areas into a less stressful experience. They'll minimise the chance of having a costly bump too, making an Xvision\* system not just convenient, but an essential driving aid.



## ClimAir®\* Wind Deflector

Reduce turbulence and noise, for a more enjoyable drive with the window down – even when it's raining. Made of 3 mm cast acrylic high quality glass, with an optimised design for perfect fitting.

## ClimAir®\* Sunblind

Make your journey even more comfortable. The sunblind reduces exposure to solar radiation and can also be used whilst windows are open. Giving the distinctive look of privacy glass, it can be fitted quickly and easily without drilling thanks to its inconspicuous holder system.



Comfort Products	Order Code
ClimAir®* Sunblind for all rear windows – Set of 5	1803 460
ClimAir®* Wind Deflector for front door windows, dark grey – Set of 2	1803 462
ClimAir®* Wind Deflector for front door windows, light grey – Set of 2	1803 461
ClimAir®* Wind Deflector for rear door windows, dark grey – Set of 2	1803 464
ClimAir®* Wind Deflector for rear door windows, light grey – Set of 2	1803 463
Polytec* Armrest design "Pelican III" – With integrated stowage box, adjustable in height and length, including 4 screws for fitting, armrest top is made of composition leather with a high quality stitching.	1815 000
WAECO* Cool Box BordBar TB-08 – 8 litre capacity, accommodates 0.33 litre cans and 0.5 litre bottles. Lid with secure pressure closure. Two drink holders and practical shoulder strap. Cools up to 20 °C below ambient temperature and heats up to 65 °C. Powered through cigarette lighter / 12 volt socket	1335 527
WAECO* Cool Box BordBar TB-15 – 15 litre capacity, accommodates 2 litre bottles. Cools up to 20 °C below ambient temperature and heats up to 65 °C. Active Battery Security (ABS) minimises battery drain. Easy to open and close with just one hand, extendable fastening rail provides extra support in case of a sudden stop. Powered through cigarette lighter / 12 volt socket	1335 526
WAECO* Cool Box BordBar TE-21-ISO – For ISOFIX fastening, safe and sturdy, 21 litre capacity, accommodates 2 litre bottles. Cools up to 30 °C below ambient temperature and heats up to 65 °C. TC special electronics. Soft-touch operating panel with LED indicators and memory function. Space-saving detachable lid. Can be powered through 12/24 volt sockets (e.g. vehicle cigarette lighter) or 230 volts (e.g. in your home or office)	1479 499
WAECO* Cool Box BordBar TF-14 – 14 litre capacity, accommodates 1.5 litre or 2 litre bottles. With outside pockets for anything that doesn't need cooling. Cools up to 25 °C below ambient temperature. Powered through cigarette lighter / 12 volt socket	1335 525
WAECO* Cool Box TropiCool TC-35FL – Easy to carry, 35 litre capacity, accommodates 2 litre bottles. Cools up to 30 °C below ambient temperature and heats up to 65 °C. TC special electronics. Soft-touch operating panel with LED indicators and memory function. Space-saving detachable lid, with practical fold-away handle. Can be powered through 12/24 volt sockets (e.g. vehicle cigarette lighter) or 230 volts (e.g. in your home or office)	1434 385
Xvision* Parking Distance Control - Front 4 way sensor kit with LED display, colour coded, from 1/2012 onwards.	1804 070
Xvision* Parking Distance Control - Front 4 way sensor kit with LED display, matt black finish, from 1/2012 onwards.	1804 069
Xvision* Parking Distance Control - Rear 4 way sensor kit colour coded, from 1/2012 onwards.	1804 062
Xvision* Parking Distance Control - Rear 4 way sensor kit, matt black finish, from 1/2012 onwards.	1804 061



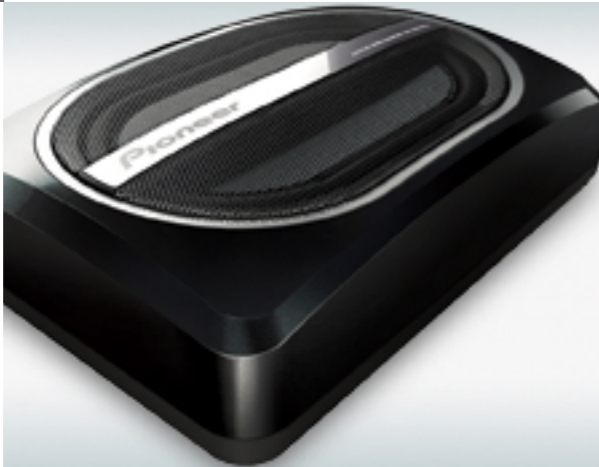
### Garmin® Portable Navigation System

With a large range of portable navigation systems to choose from, in-car navigation has never been easier. They offer everything you want in an automotive navigation system – from automatic route capability and voice prompts to a colour display, making it easy to find your way anywhere.



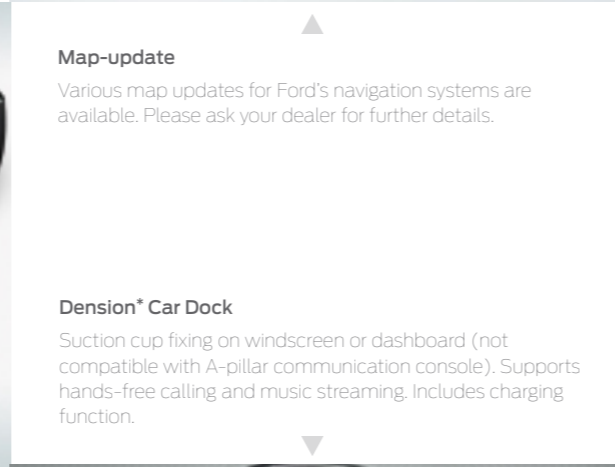
### Map-update

Various map updates for Ford's navigation systems are available. Please ask your dealer for further details.



### Pioneer® Subwoofer

Complement your sound system with a highly powerful, but space-saving Pioneer® subwoofer – for an even better bass feeling. And it's so compact you can even install it underneath the passenger seat – without compromising on power!



### Dension® Car Dock

Suction cup fixing on windscreen or dashboard (not compatible with A-pillar communication console). Supports hands-free calling and music streaming. Includes charging function.

### Pioneer® Multimedia Navigation

If you want more than just a navigation system while you're on the road, our multimedia navigation systems are the answer. Fully loaded with up-to-date features, as well as full map coverage of European countries, they offer a Bluetooth® hands-free module and compatibility with various file formats – including DVD player and iPhone®/iPod® connectivity. So you won't miss a thing – wherever you travel!



# Infotainment

Ford gives you more to enjoy than just driving – like the wide range of entertainment and information options available, to help you get where you're going, and have more fun on the way. Whatever you choose, it will be state-of-the-art, user-friendly technology.

Audio	Order Code
Pioneer® Subwoofer TS-WX 110A – Compact "all-in-one" subwoofer and amplifier system, 6" x 9" active subwoofer, with wired remote control, built-in MOSFET 150W max amplifier, dimensions 280 x 75 x 200 mm.	1756 018
Navigation	Order Code
TomTom® Map-update for Ford MFD navigation system – Contains the latest software revision and map updates for major roads in Europe and Turkey plus major roads South East Europe.	1855 844
Garmin® Portable Navigation System nüvi® 2497LMT – 4.3" colour dual-orientation display with touch screen and voice-activated navigation, features include: Bluetooth® wireless technology, high-sensitivity GPS receiver, free lifetime nüMaps and traffic updates, advanced lane guidance, speed limit indicator, pre-installed with maps of 45 European countries, route planning with up to 100 saved routes, smartphone Link for Android and iOS systems.	1852 240
Pioneer® Multimedia Navigation AVIC-FB60BT – 6.1" (15.5 cm) colour display with 3D multi touch screen, features include: Apple CarPlay® (Pioneer® update via USB required, July 2014), AVICSYNC-App, Bluetooth® hands-free module, Full European map coverage. Double DIN bezel (FINIS 1838187) and CAN-Bus/Remote Control Adapter (FINIS 1789584) required for installation.	1869 308
Pioneer® Double DIN Bezel black – Required to fit 2-DIN radios and multimedia navigation systems into Ford vehicles	1838 187
STC Europe® CAN-bus/remote control adapter – Required to fit Pioneer® Radios and multimedia navigation, enables connection to your vehicle's steering wheel remote control and display of vehicle's climate and parking distance control information	1789 584
Hands-Free Kits	Order Code
Parrot® Bluetooth® Hands-free kit Minikit+	1831 831
Parrot® Bluetooth® Hands-free kit CK3100 LCD – Bluetooth® in-car hands-free system with LCD screen and external microphone.	1574 327
Parrot® Bluetooth® Hands-free kit MKI 9200 – With 2.4" TFT colour screen and external double microphone. Displays detailed information (e.g. caller's ID and photo, phone book, playlist, album covers etc.). Automatic phone book synchronisation. Plays music via A2DP streaming, iPod®, USB and Line-in, with SD card reader, compatible with SD and SD/HC	1697 250
Other Infotainment Accessories	Order Code
Dension® Car Dock for Smartphones – Multipurpose sound transmitter, mounts on windscreen or dashboard, advanced sound quality via your Ford's audio system, with built-in microphone, AUX and FM audio output. Phone charging function via cigarette lighter plug, including auxiliary audio cable. Compatible with larger smartphones e.g. Samsung Galaxy S4 or Sony Xperia Z, Apple lightning to micro-USB additionally required for iPhone® 5.	1831 835
iPhone®/iPod® Adapter Cable USB & 3.5mm aux connection – Connects your Apple iPod® / iPhone® audio device to the vehicle's audio or navigation system. Lead connects using the Apple 30-pin connector to USB and 3.5mm Aux connections. *not compatible with Apple lightning connector.	1529 487

Please ask your Ford dealer for further details.

\* Find more information on page 23.

# Ford Lifestyle Collection

The new Ford Lifestyle Collection consists of high-quality, contemporary products with an attractive design that reflects the Ford heritage. You can choose from scale model cars to clothing and baseball caps, ideal for a special gift. To view the full range of products please visit [www.fordlifestylecollection.com](http://www.fordlifestylecollection.com), or visit your local dealer.



Ford B-MAX Leather Bracelet - 2-way wrap bracelet made from high quality cattle split leather, with oiled edges and a mat stainless steel buckle.

35021105



Ford B-MAX Messenger Bag - Practical messenger bag made from high-quality leather and nylon. The messenger bag offers enough space for notebooks for a diagonal screen up to 17 inches. Including one big main compartment, a smaller pocket on one side, a zipper compartment, an open pocket for all leading smartphone types and an additional big zipper compartment on the back.

35021102

Ford B-MAX Coffee Mug - Handmade and high-quality coffee mug "Made in Germany" in the Ford B-MAX design. The special hydro glaze in matt black on the outside and the B-MAX "Burnish Glow" as contrast on the inside make this coffee mug a real eye-catcher and collector's piece!

35021101



**Illustrations, descriptions and specifications.** This catalogue was correct at the time of going to print. However, Ford policy is one of continuous product development. The right is reserved to change specifications, colours and prices of the models and items illustrated and described in this publication at any time. For the latest details always consult your Ford Dealer. **Note.** This brochure contains both original Ford accessories as well as a range of products from our suppliers. \*The identified accessories are carefully selected third party supplier branded accessories which do not come with a Ford warranty but are instead covered by the third party supplier's own warranty, the details of which can be obtained from your Ford Dealer. **Note.** The Bluetooth® word mark and logos are owned by the Bluetooth® SIG, Inc. and any use of such marks by Ford Motor Company is under licence. The iPod® word mark and logos are the property of Apple Inc. Other trademarks and trade names are those of their respective owners.

Ford B-MAX Compressed T-Shirt - A real eye-catcher and unique present for every Ford B-MAX Fan! White, high quality t-shirt packed in the special Ford B-MAX shape!

35021117

Ford B-MAX Polo-Shirt - High quality polo shirt in the exclusive Ford B-MAX design! This polo shirt is a real unique item due to its detail and stitching! Very comfortable to wear due to very soft and comfortable cotton.

35021110



When you have finished with this brochure, please recycle it.

Issued by Ford Motor Company Limited  
Eagle Way  
Brentwood, Essex  
England  
Registered in England No. 235446  
07/2014  
© Ford-Werke GmbH