

*MAZDA 3*



zoom-zoom  
zoom-zoom  
zoom-zoom  
zoom-zoom

## *WELCOME TO A NEW WAY OF THINKING*

---

At Mazda we believe that if you accept conventional wisdom you end up with conventional cars. That's why we defy convention.

It's a philosophy that has led to lighter cars that are more fun to drive – while being stronger and safer. It has led to engines that burn less fuel yet create more power. And it has resulted in cars that are designed to feel like a natural extension of the driver's body.

If you're ready for a new way of thinking, welcome to Mazda.



### **Active Content**

Download the all-new Mazda3 app and point your smartphone or tablet at this page and pages where the phone icon appears to unlock extra content. The app is available for Apple iOS or Android devices, search for "Mazda3" on the App Store or Google Play.



### **Latest Mazda Apps**

Point your smartphone or tablet at the QR code to download the latest Mazda apps. The new My Mazda app provides access to important information on your vehicle, locating your nearest Mazda dealer and track your service schedule.



## *WHEN YOU STEP IN, YOU'LL KNOW*

With the perfect balance of performance and efficiency, the all-new Mazda3 represents the exhilarating driving DNA you expect from Mazda. The vehicle's stunning looks are thanks to its award-winning KODO: Soul of Motion inspired design. Along with the sleek body, an array of ground-breaking active and passive safety systems combined with our award-winning SKYACTIV Technology deliver a responsive and harmonious driving experience like no other.



reddot award 2014  
winner



**WORLD CAR  
AWARDS 2014**  
TOP THREE IN  
THE WORLD



## *GET READY TO BE NOTICED*

Based around the award-winning KODO: Soul of Motion design language, the streamlined body and sculpted edges of the all-new Mazda3 convey power and fluidity, while the attention-grabbing chrome-lined front grille and signature headlights promise to turn heads. The distinctive flowing lines continue in the generously-proportioned interior, with sport-styled seats and soft-touch materials providing the comfort you need to enjoy the drive.



## *INTELLIGENCE YOU CAN'T DENY*

All-new Mazda3 strengthens the interactive relationship between car and driver. The 7" colour touch-screen is positioned high on the dashboard, closer to the driver's natural line of sight, meaning your eyes stay on the road for more of the time. Advanced connectivity including internet apps providing access to Facebook and Twitter\*, as well as the navigation system, are controlled using the newly designed Multimedia Commander. Along with innovative in-car technologies, a range of active and passive safety systems warn you of impending dangers, delivering a secure journey that lets you feel in sync with your car in ways you've only imagined.



## *DON'T JUST DRIVE. EXPERIENCE*

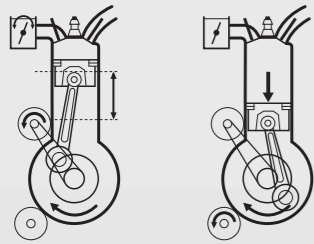
The beauty of the all-new Mazda3 is matched by its performance. The aerodynamic, lightweight body delivers precision and agility, guaranteeing a responsive and dynamic drive from the moment you set off. With outstanding fuel consumption and low CO<sub>2</sub> emissions, the SKYACTIV-G petrol engines and SKYACTIV-D diesel engine help make all-new Mazda3 a responsive, fun and environmentally-friendly vehicle that performs as brilliantly as it looks.



# WHEN BODY MEETS SOUL

## I-STOP SMART IDLING STOP SYSTEM

Mazda's innovative i-stop system saves fuel and cuts emissions by placing the engine on standby when stationary in traffic, instantly restarting as soon as you are ready to go. Standard on both the SKYACTIV-G petrol and SKYACTIV-D diesel engines, this advanced system uses combustion energy rather than the starter motor for a smoother, quicker restart – just 0.35 seconds for the SKYACTIV-G petrol engine and 0.40 seconds for the SKYACTIV-D diesel engine – faster than the competition.



## SKYACTIV-CHASSIS

The lightweight SKYACTIV-CHASSIS offers the perfect balance of agility and stability, providing powerful and dynamic driving, and delivering the 'fun to drive' element you have come to expect of a Mazda.



## SKYACTIV-G 120PS ENGINE

The SKYACTIV-G 120ps petrol engine offers performance combined with outstanding fuel consumption and improved CO<sub>2</sub> emissions, providing an exhilarating experience in keeping with Mazda's spirited driving DNA.



SKYACTIV Technology is all about fuel economy, low emissions and making driving fun. Embracing all the technologies – engines, transmissions, chassis and body – it's an approach that completely reimagines the car from the ground up. Our engines deliver the perfect combination of performance and economy by being lighter, stronger and more efficient. And our award-winning SKYACTIV Technology means we create cars that defy convention.



Model shown is a Mazda3 120ps Sport Nav with Soul Red Metallic paint available at additional cost.

*GET  
READY  
TO  
CONNECT*

**7" COLOUR DISPLAY**

Mounted high on the centre of the dashboard, the 7" colour touch-screen displays a range of useful information, including access to internet applications\* or the eco-driving display screen.



All-new Mazda3 offers a remarkable combination of advanced information, entertainment and connectivity. Standard across the range is an advanced infotainment and connectivity system that provides access to a range of features and applications. This is controlled using a large 7" colour touch-screen and an intuitive Multimedia Commander, both designed to ensure you can use the system with minimal effort meaning you can concentrate on enjoying the drive. Connectivity is key in the all-new Mazda3 and via a compatible mobile device you can access thousands of internet radio stations from around the world, safely check and reply to text messages, and even keep up to date with Facebook and Twitter\*. With the integrated navigation you can plan your journey quickly and easily and even select from a number of routes. Choose from the fastest, shortest, most economical or easiest route meaning you are always in control of the journey\*\*.

\*Please refer to footnote on page 38 for more information.

\*\*Integrated navigation is optional on SE and SE-L models, standard on Sport Nav models.





*ALWAYS  
AHEAD  
OF  
THE  
REST*

**ACTIVE DRIVING DISPLAY**

The Active Driving Display provides essential driving information including speed, turn-by-turn navigation and emergency warnings via a head-up display. Not only is this an advanced piece of technology, but the head-up display is positioned in the driver's eye line so that you can keep your eyes on the road, whilst still keeping in touch with key driving information. (Sport Nav models only).



# THE ART OF SAFETY



All-new Mazda3 contains an array of intelligent safety features that are designed to help you relax and enjoy the drive. The active and passive safety systems in all-new Mazda3 work together to warn you of impending dangers, mitigating damage and delivering a peaceful journey. All safety technology in the all-new Mazda3 has been designed to provide generous levels of security and protection, without reducing driving enjoyment.

#### Smart City Brake Support (SCBS)

Take the stress out of city driving with Smart City Brake Support. Designed to help avoid or minimise the effects of low-speed collisions, the laser-based system continually monitors the gap and closing speed to the vehicle in front, and applies the brakes if a collision is likely, operating at speeds up to approximately 20mph. (Standard on all models).

#### Adaptive Front lighting System (AFS)

Increase visibility when driving at night with the Adaptive Front lighting System. The system adjusts the angle of the Bi-Xenon headlights when cornering to allow more of the road ahead to be lit which could increase your ability to react to any potential obstacles. (Sport Nav models only).

#### Dynamic Stability Control (DSC)

DSC enhances stability in critical driving situations. Working in conjunction with ABS, the system reduces engine power when necessary and carefully regulates braking pressure on individual wheels, ensuring that the car can get around corners or obstacles without oversteering or understeering – whilst maintaining maximum traction and stability. (Standard on all models).

#### Anti-lock Braking System (ABS)

ABS is a safety system which takes over control of the brakes under heavy braking. Through a mechanical system that 'pumps' the brakes quickly, it limits the lock-up of the wheels, which could send a car into a skid situation. This 'pumping' action can slow the vehicle faster and allows some steering control to avoid obstacles. (Standard on all models).

#### Traction Control System (TCS)

TCS utilises engine and brake control to assist drivers in regaining traction of driven wheels in the event of wheel spin. When the system detects driven wheel slippage, it reduces engine torque and operates braking to the traction-less wheel(s), slowing the wheel(s) down to match the speed of the other driven wheel(s), preventing loss of traction. (Standard on all models).

#### Emergency Brake-force Distribution (EBD)

EBD is a braking system that automatically senses road conditions, speed and importantly the weight distribution in the vehicle, and applies the brakes in accordance to maximise braking potential, whilst minimising forward tilt. This supports shorter stopping distances and can help prevent accidents. (Standard on all models).

#### Rear Vehicle Monitoring (RVM)\*

RVM warns you of a vehicle entering a detection zone situated beside and behind the car by activating a door mirror-mounted warning light on the relevant side of the car. If you then indicate prior to turning in that direction, the warning light begins flashing and an audible alert sounds. This can prevent drivers from moving into the path of a following vehicle.

#### High Beam Control (HBC)\*

Automatically switches between high and low beams according to traffic conditions. The system detects the headlights of oncoming vehicles or rear lights of those travelling ahead and switches to low beam so as not to blind other drivers, then switches back to high beam once the road is clear.

#### Lane Departure Warning System (LDWS)\*

Designed to warn the driver if the vehicle inadvertently strays from its lane. A front-view camera monitors the road ahead and calculates the car's position relative to the lane markings. Should the system detect that the car is about to unintentionally move out of its lane, it emits an audible warning sound to alert the driver.



# ALL-NEW MAZDA3

SE / SE NAV



- 16" Alloy wheels
  - Power folding door mirrors with integrated indicators
  - Rear roof spoiler\*
  - Manual air-conditioning
  - Radio with single CD player and six speakers
  - 7" Colour touch-screen display and Multimedia Commander
  - USB, iPod® and Bluetooth® connectivity
  - Internet app integration for internet radio, Facebook and Twitter\*\*
  - Steering wheel-mounted audio and Bluetooth® controls
  - Engine start / stop button
  - Trip computer
  - Auto-dimming rear-view mirror
- Front and rear electric windows
  - Leather-wrapped steering wheel and gear knob
  - 60:40 split folding rear seats
  - Hill Hold Assist
  - Tyre Pressure Monitoring System
  - Smart City Brake Support
  - Anti-lock Braking System with Electronic Brake-force Distribution and Emergency Brake Assist
  - Dynamic Stability Control with Traction Control System
  - Dual front, side and curtain airbags

### Bodystyles:



■ Mazda3



■ Mazda3 Fastback

### Options:

- Metallic / Mica / Pearlescent paint
- Integrated navigation with 3-years free map updates

All-new Mazda3 provides enhanced levels of comfort and style as standard. The sumptuous interior with piano black and silver accents provide idyllic driving comfort, while the 16" alloy wheels, shark fin antenna\* and sleek sculptured exterior design enhances the exterior appeal and look of the all-new Mazda3.



### Manual air-conditioning

Allows you to easily adjust the temperature of the interior.



### Engine start / stop button

Allows you to conveniently start or stop the engine without having to insert the key.



### Multimedia Commander

Provides access to the advanced connectivity and infotainment system, while you remain focused on the road ahead. Includes separate volume dial.



### 16" Alloy wheels

Dynamic and stylish wheels help to give your vehicle a sense of power and stability while also looking great.

\*Mazda3 hatchback models only. \*\*Please refer to footnote on page 38 for more information. Main model shown is a Mazda3 120ps SE Nav with optional Blue Reflex Mica paint available at additional cost.

# ALL-NEW MAZDA3

SE-L / SE-L NAV



## In addition to SE grade

- Bi-Xenon headlights with automatic headlight levelling and cleaning
- LED signature daytime running lights
- LED signature rear lights
- Front fog lights
- Dual-zone climate control air-conditioning
- Privacy glass
- Rain-sensing front wipers
- Dusk-sensing headlights
- Rear parking sensors
- Heated front seats with 3-stage settings
- Cruise control
- Adjustable speed limiter

## Options:

- Metallic / Mica / Pearlescent paint
- Integrated navigation with 3-years free map updates

## Bodystyles:



■ Mazda3



■ Mazda3 Fastback

All-new Mazda3 SE-L grade has everything you need for both in-car and driving convenience. With a range of practical features including cruise control, Bi-Xenon headlights, LED signature daytime running lights, front fog lights and rear parking sensors for additional safety, combined with interior comfort features such as heated front seats and dual-zone climate control you will feel a real sense of unity with your all-new Mazda3.



## Dual-zone climate control air-conditioning

Ensure that both driver and front passenger ride in comfort with individual climate control zones.



## Cruise control

Lets you maintain a set driving speed and can easily be disengaged when not in use.



## Front fog lights

Increase visibility when driving in adverse weather conditions and enhance the styling of the car.



## LED signature daytime running lights and Bi-Xenon headlights

Signature front headlamps and daytime running lights help you clearly see the road ahead while providing a dynamic and sporty design for the front of the all-new Mazda3.

# ALL-NEW MAZDA3

SPORT NAV



### In addition to SE-L grade

- 18" Alloy wheels
- Adaptive Front lighting System
- Premium Bose® Centerpoint® surround-sound system with nine speakers
- Integrated navigation with 3-years free map updates
- Digital speedometer
- Active Driving Display
- Front parking sensors (in addition to rear sensors)
- Smart keyless entry system

### Options:

- Metallic / Mica / Pearlescent paint
- Black leather interior including driver's seat power adjustment\*
- Light Stone leather interior including driver's seat power adjustment
- Safety Pack (Rear Vehicle Monitoring, Lane Departure Warning System and High Beam Control)

### Bodystyles:



■ Mazda3



■ Mazda3 Fastback

Experience the true potential of all-new Mazda3 with the Sport Nav grade. With optimum levels of comfort and specification, such as integrated navigation, head-up display and the optional Safety Pack, the Sport Nav grade offers a truly memorable and inspiring driving sensation.

\*Black leather interior is standard on the Mazda3 165ps Sport Nav model only and optional on all other Sport Nav models at additional cost. Main model shown is a Mazda3 165ps Sport Nav with optional Soul Red Metallic paint available at additional cost.



### Active Driving Display (Head-up display)

Provides essential driving information, such as speed, turn-by-turn navigation and vehicle warnings in the line of sight allowing you to focus on the road ahead.



### Leather interior (Optional at additional cost)\*

Improve the overall quality of the interior, letting you relax and enjoy the drive in comfort. Available in Black\* or Light Stone.



### 18" Alloy wheels

Larger alloy wheels help to enhance the stylish look of your vehicle, making you stand out from the crowd.



### Bose® surround-sound system

The sensational Bose® surround-sound system offers nine precisely positioned speakers and a lightweight energy-efficient amplifier for true-to-life panoramic sound and powerful bass reproduction.

# ALL-NEW MAZDA3

## ACCESSORIES

Make your all-new Mazda3 uniquely yours. Whether you start with an SE, SE-L or Sport Nav model, there's a long list of genuine Mazda accessories to help make your idea of perfection. From individual items to complete package, your Mazda dealer will give you all the information you need.



Model shown is a Mazda3 120ps Sport Nav with optional Snowflake White Pearlescent paint, accessory 18" Dark Gunmetal alloy wheels (design 152), Brilliant Black door mirror covers and rear roof spoiler, LED front fog lights and front, side and rear airdam skirts all available at additional cost.



**Scuff plates**

Helps to protect the interior edge from scuffs and knocks.



**Aluminium Pedal Set**

Enhances the interior styling of the all-new Mazda3.



**Boot liner**

Helps to keep the vehicle luggage compartment clean and tidy.



**Storage box**

Allows you to transport small or delicate items securely, keeping them separate from other luggage.





## MAZDA FINANCIAL SERVICES

### Who are we?

Mazda Financial Services is a division of Santander Consumer, the leading Consumer Finance House in Europe. We provide finance facilities for your Mazda vehicle through Mazda dealers at competitive rates together with additional products. We are one of the UK's leading 'point of sale' finance providers, which means your Mazda dealer can provide you with a convenient "One-Stop Shop" when choosing your next Mazda. From our wide range of finance plans, there's an option available to you, whether you are thinking of a new or used Mazda.

### What you can expect from Mazda Financial Services:

- Face-to-face service from trained, plain-talking people at your local Mazda Dealer
- Assistance in renewing your car. We'll help you choose the right finance package to enable you to renew your Mazda car as often as you would ideally like
- Fixed Interest Rates. The interest rate on your loan is fixed for the duration of the agreement
- Flexible terms tailored to your motoring needs. As specialists in Mazda vehicles we aim to tailor a finance package to both your budget and your motoring / ownership needs

Please ask your sales executive for a tailor-made finance quote for your new car.

### Mazda Financial Services Finance Plans:

#### Mazda Conditional Sale:

The traditional way of buying your car. Mazda Conditional Sale is flexible and simple, with a range of options to suit everyone.

#### The benefits

- Simple – fixed, equal, regular instalments
- Predictable – pay all your instalments and you own the car
- Flexible – you determine your repayment period at the start of your contract, meaning that you have total control of your budget

#### How it works

1. Choose your Mazda. Tell your dealer the deposit and repayment period you want, from 12-60 months.
2. Agree your repayments. These are based on how much is left to pay, plus interest where applicable.
3. Drive away the moment we activate your agreement.

At the end of your contract, when all instalments have been made, the car is yours. You then have two choices:

- **Renew:** Choose another Mazda. The car is yours; you can part exchange it for another Mazda and use the value as your deposit
- **Retain:** Keep the car. The car is yours once all instalments have been made

#### Mazda Personal Contract Purchase:

The finance plan that helps you change your Mazda car at more regular intervals.

#### The benefits

- You can fund your car over shorter periods, so you get the chance to change more often
- The flexibility at the end of the agreement to choose to renew, retain or return your Mazda
- You're protected against any fall in used car prices by an Optional Final Payment (OFP)

#### How it works

1. Choose any new or used Mazda. Estimate your annual mileage.
2. We estimate the minimum amount your car will be worth once your contract finishes – the OFP.
3. To work out your regular payments we add any interest charges and calculate the monthly payments based on your deposit and the OFP.
4. Drive away the moment we activate your agreement.

At the end of your contract, when all instalments have been made, you then have three choices:

- **Renew:** Choose another Mazda. Use any excess value above the OFP towards a deposit for another Mazda. You can trade in your car at any time or sell it privately having settled your account
- **Retain:** Keep the car. Simply pay the OFP, and the car is yours
- **Return your car:** There's nothing more to pay if the car's in good condition and within the agreed mileage

## OUR COMMITMENT TO THE ENVIRONMENT

Mazda makes cars that excite, look stylish and appealing, are fun to drive and make you want to get behind the wheel again and again. But we are equally committed to the environment, to the creation of a sustainable future for all. This means limiting the Earth's resources that we use and always considering the environmental impact in everything we do.

Our sustainability programme is dedicated to the development of clean technologies. This covers every aspect of a vehicle's impact on the environment – from planning and development, through to manufacturing, use and eventual recycling / disposal. Below are just three examples of how our environmental policies have led to significant advances in 'green' technology.

#### Plant-derived plastics

Our interior car plastics use carbon-neutral\* plant-derived biomass – an industry first.

#### Benefits:

- Reduces reliance on fossil fuels
- Cuts CO<sub>2</sub> emissions
- Uses sustainable raw materials
- Requires 30% less energy to produce than petroleum based plastics
- Is three times stronger than conventional bioplastics
- Has 25% higher heat resistance than conventional bioplastics
- Produces lighter, stronger parts improving fuel economy

\*CO<sub>2</sub> released when the bioplastic decomposes or is burned is comparable to the amount absorbed by growing plants, having a negligible impact on total atmospheric CO<sub>2</sub> levels.

#### Semi-dry machining process

Conventional machining of cast metal parts uses huge amounts of water-based coolant to cool and lubricate cutting tools, and remove and collect waste metal. With Mazda's semi-dry machining process, we have substituted large volumes of coolant for tiny quantities of atomised biodegradable oil in a jet of air.

#### Benefits:

- 84% reduction in the amount of coolant required
- Reduced electricity consumption by 40% on machining lines
- 80% cut in waste liquids

#### Recycling

Mazda has made a substantial commitment to recycling.

- We have reduced waste material in our production facilities by 55% since 1990
- In 1992 we became the first car manufacturer to recycle bumpers
- Over 75% of our plastic parts can be recycled
- All of our gaskets and brake-pads are asbestos-free
- There are no ozone-damaging CFCs in our polyurethane products (such as the foam padding in seats, armrests and steering wheels)
- Many of our plants have passed the stringent ISO 14001 test – commonly known as the environmental ISO



## MODEL AVAILABILITY AND TECHNICAL DATA

Model Availability		1.5 SKYACTIV-G Petrol 100ps Manual	2.0 SKYACTIV-G Petrol 120ps Manual	2.0 SKYACTIV-G Petrol 120ps Automatic	2.0 SKYACTIV-G Petrol 165ps Manual	2.2 SKYACTIV-D Diesel 150ps Manual	2.2 SKYACTIV-D Diesel 150ps Automatic
Mazda3:	SE / SE Nav	■	■	■	-	■	-
	SE-L / SE-L Nav	-	■	■	-	■	■
	Sport Nav	-	■	■	■	■	■
Mazda3 Fastback:	SE / SE Nav	-	■	■	-	■	-
	SE-L / SE-L Nav	-	■	■	-	■	-
	Sport Nav	-	■	■	-	■	-

■ = Available.

### Engine Type

Displacement (cc)	1496	1998	1998	1998	2191	2191
Bore x stroke (mm)	74.5 x 85.8	83.5 x 91.2	83.5 x 91.2	83.5 x 91.2	86.0 x 94.3	86.0 x 94.3
Valves per cylinder	4	4	4	4	4	4
Maximum output (ps (kW) / rpm)	100 (74) / 6000	120 (88) / 6000	120 (88) / 6000	165 (121) / 6000	150 (110) / 4500	150 (110) / 4500
Maximum torque (Nm / rpm)	150 / 4000	210 / 4000	210 / 4000	210 / 4000	380 / 1800	380 / 1800
Compression ratio	14:1	14:1	14:1	14:1	14:1	14:1
i-ELOOP system	-	-	-	●	-	-
i-stop system	●	●	●	●	●	●
Transmission type	6-speed manual	6-speed manual	6-speed automatic	6-speed manual	6-speed manual	6-speed automatic

### Steering

Steering gear		----- Electronic Power Assist System (EPAS) rack and pinion -----					
Minimum turning circle:	wall to wall (m)	11.3	11.3	11.3	11.3	11.3	11.3

● = Standard.

## SPECIFICATIONS

Performance & Economy		1.5 SKYACTIV-G Petrol 100ps Manual	2.0 SKYACTIV-G Petrol 120ps Manual	2.0 SKYACTIV-G Petrol 120ps Automatic	2.0 SKYACTIV-G Petrol 165ps Manual	2.2 SKYACTIV-D Diesel 150ps Manual	2.2 SKYACTIV-D Diesel 150ps Automatic
Mazda3							
Acceleration (0-62mph in sec.)		10.8	8.9	10.4	8.2	8.1	9.7
Top speed (mph)		113	121	121	130	130	125
Fuel consumption <sup>1)</sup> (mpg (l/100km)):							
	Urban	43.5 (6.5)	43.5 (6.5)	40.4 (7.0)	37.7 (7.5)	57.6 (4.9)	47.1 (6.0)
	Extra Urban	65.7 (4.3)	65.7 (4.3)	58.9 (4.8)	58.9 (4.8)	78.5 (3.6)	68.9 (4.1)
	Combined	55.4 (5.1)	55.4 (5.1)	50.4 (5.6)	48.7 (5.8)	68.9 (4.1)	58.9 (4.8)
CO <sub>2</sub> emissions <sup>1)</sup> (g/km)		119	119	129	135	107	127
EC emission level		----- Euro V -----				----- Euro VI -----	
Fuel tank capacity (litres)		51	51	51	51	51	51
Recommended fuel		----- Unleaded 95 RON -----				----- Diesel -----	

### Mazda3 Fastback

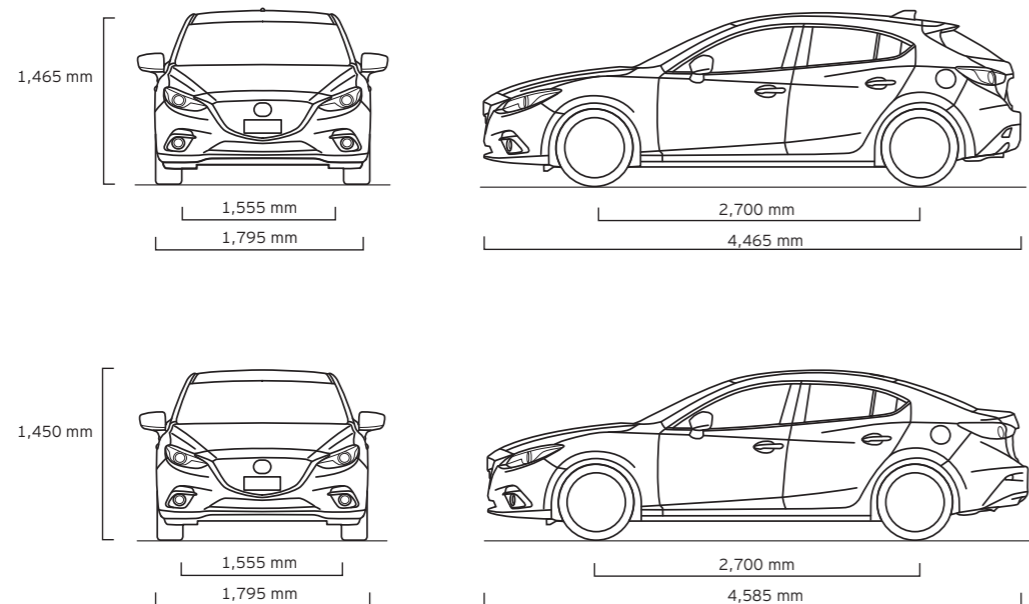
Acceleration (0-62mph in sec.)		-	8.8	10.3	-	8.0	-
Top speed (mph)		-	123	123	-	132	-
Fuel consumption <sup>1)</sup> (mpg (l/100km)):							
	Urban	-	43.5 (6.5)	40.4 (7.0)	-	60.1 (4.7)	-
	Extra Urban	-	65.7 (4.3)	58.9 (4.8)	-	80.7 (3.5)	-
	Combined	-	55.4 (5.1)	50.4 (5.6)	-	72.4 (3.9)	-
CO <sub>2</sub> emissions <sup>1)</sup> (g/km)		-	119	128	-	104	-
EC emission level		-	----- Euro V -----		-	Euro VI	-
Fuel tank capacity (litres)		-	51	51	-	51	-
Recommended fuel		-	----- Unleaded 95 RON -----		-	Diesel	-

<sup>1)</sup>Fuel consumption and CO<sub>2</sub> emission figures are obtained under standardised test conditions defined in European legislation using a representative model. This allows for a direct comparison between different models from different manufacturers, but may not represent the actual fuel consumption achieved in 'real world' driving conditions. More information is available at <http://carfueldata.direct.gov.uk/>

## SPECIFICATIONS

Dimensions & Weights	1.5 SKYACTIV-G Petrol 100ps Manual	2.0 SKYACTIV-G Petrol 120ps Manual	2.0 SKYACTIV-G Petrol 120ps Automatic	2.0 SKYACTIV-G Petrol 165ps Manual	2.2 SKYACTIV-D Diesel 150ps Manual	2.2 SKYACTIV-D Diesel 150ps Automatic
Mazda3						
Overall length / width / height (mm)	----- 4465 / 1795 / 1465 -----					
Ground clearance between the axles – unladen (mm)	155	155	155	155	155	155
Front track / rear track (mm)	----- 1555 / 1560 -----					
Wheelbase (mm)	2700	2700	2700	2700	2700	2700
Front headroom / legroom / shoulder room (mm)	----- 981 / 1073 / 1452 -----					
Rear headroom / legroom / shoulder room (mm)	----- 955 / 909 / 1382 -----					
Cargo volume, acc. to VDA (including under floor storage space) (litres):	5-seat mode	364	364	364	364	364
	2-seat mode	1263	1263	1263	1263	1263
Kerb weight (kg) incl. driver (75kg)		1351	1355	1389	1368	1470
Permitted gross vehicle weight (kg):	Total	1800	1815	1835	1815	1910
	Front / rear	905 / 895	935 / 880	955 / 880	935 / 880	1035 / 875
Permitted axle load, front / rear (kg)		930 / 945	960 / 930	980 / 930	960 / 930	1060 / 925
Towing limit (kg):	Braked (12% gradient)	950	1300	1300	1300	1500
Maximum roof load (kg)		75	75	75	75	75

Dimensions & Weights	1.5 SKYACTIV-G Petrol 100ps Manual	2.0 SKYACTIV-G Petrol 120ps Manual	2.0 SKYACTIV-G Petrol 120ps Automatic	2.0 SKYACTIV-G Petrol 165ps Manual	2.2 SKYACTIV-D Diesel 150ps Manual	2.2 SKYACTIV-D Diesel 150ps Automatic
Mazda3 Fastback						
Overall length / width / height (mm)	-	---- 4585 / 1795 / 1450 ----	-	4585 / 1795 / 1450	-	-
Ground clearance between the axles – unladen (mm)	-	155	155	-	155	-
Front track / rear track (mm)	-	1555 / 1560	1555 / 1560	-	1555 / 1560	-
Wheelbase (mm)	-	2700	2700	-	2700	-
Front headroom / legroom / shoulder room (mm)	-	---- 981 / 1073 / 1452 ----	-	981 / 1073 / 1452	-	-
Rear headroom / legroom / shoulder room (mm)	-	----- 955 / 909 / 1382 -----	-	955 / 909 / 1382	-	-
Cargo volume, acc. to VDA (including under floor storage space) (litres):	5-seat mode	419	419	-	419	-
	2-seat mode	-	-	-	-	-
Kerb weight (kg) incl. driver (75kg)	-	1347	1380	-	1458	-
Permitted gross vehicle weight (kg):	Total	1815	1835	-	1910	-
	Front / rear	935 / 880	955 / 880	-	1035 / 875	-
Permitted axle load, front / rear (kg)	-	960 / 930	980 / 930	-	1060 / 925	-
Towing limit (kg):	Braked (12% gradient)	1300	1300	-	1500	-
Maximum roof load (kg)	-	75	75	-	75	-



## SPECIFICATIONS

Safety and Security	SE / SE Nav	SE-L / SE-L Nav	Sport Nav
SKYACTIV-Body engineered 'triple H' body structure to help protect occupants from impact forces	●	●	●
Self-supporting rigid and torsion-resistant all-steel body with defined crush zones for the front and rear sections, stable passenger safety cell with side impact reinforcement in the doors	●	●	●
Dynamic Stability Control (DSC) with Traction Control System (TCS)	●	●	●
Emergency Stop Signalling system (ESS)	●	●	●
Hill Hold Assist (HHA)	●	●	●
Smart City Brake Support (SCBS)	●	●	●
Secondary Collision Reduction (SCR):	●	●	●
	If vehicle is involved in an impact and airbags are deployed, SCR utilises the brakes and hazard warning lights to reduce the possibility of a secondary accident		
Adjustable speed limiter:	-	●	●
	Vehicle speed can be limited to between 20-125mph, and speed cannot be exceeded without deactivating limiter		
Driver and front passenger airbags	●	●	●
Front and rear curtain airbags	●	●	●
Front side airbags	●	●	●
Passenger airbag cut-off switch	●	●	●
High Beam Control (HBC)	-	-	□
Lane Departure Warning System (LDWS)	-	-	□
Rear Vehicle Monitoring (RVM)	-	-	□
Seatbelts:	●	●	●
	Front, 3-point (ELR) x 2 with pre-tensioners and load-limiters, height-adjustable		
	Rear, 3-point (ELR) x 3 with pre-tensioners		
	Reminder (driver, passenger and rear seats), audible warning		
ISOFIX child seat anchorages:	●	●	●
	Attached to outer rear seats		
Thatcham Category 1 alarm and immobiliser system	●	●	●
Tyre Pressure Monitoring System (TPMS)	●	●	●

● = Standard; □ = Part of an optional Safety Pack available at additional cost.

## SPECIFICATIONS

Exterior Features		SE / SE Nav	SE-L / SE-L Nav	Sport Nav
Tyres and wheels:	205/60 R16 with 16" alloy wheels	●	●	–
	215/45 R18 with 18" alloy wheels	–	–	●
Emergency Tyre Repair Kit		●	●	●
Metallic / Mica / Pearlescent paint		○	○	○
Rear lip spoiler (Fastback models only)		–	–	●
Rear roof spoiler (hatchback models only)		●	●	●
Door handles:	Body coloured	●	●	●
Dual chrome exhausts (hatchback models only)		● <sup>1)</sup>	●	●
Privacy glass:	Rear and rear side windows <sup>2)</sup>	–	●	●
Wipers:	Front, adjustable speed with intermittent wipe	●	●	●
	Front, rain-sensing	–	●	●
	Rear, adjustable speed with intermittent wipe (hatchback models only)	●	●	●
Headlights:	Adaptive Front lighting System (AFS)	–	–	●
	Bi-Xenon, with automatic headlight levelling and cleaning	–	●	●
	Daytime running lights	●	–	–
	Dusk-sensing lights	–	●	●
	Halogen, with manual headlight levelling	●	–	–
	LED signature daytime running lights	–	●	●
Front fog lights		–	●	–
Front fog lights with chrome surround		–	–	●
LED signature rear lights		–	●	●
Parking distance sensors:	Front and rear (with audible warning and visual display)	–	–	●
	Rear (with audible warning only)	–	●	–
Shark-fin antenna (hatchback models only)		●	●	●
Door mirrors	Electrically adjustable, power-folding, heated body-coloured door mirrors with integrated indicators	●	●	●

### Additional Exterior Options

Tyres & wheels:	16" Dark Gunmetal alloy wheels – design 151	Please contact your dealer for further information and availability.
	16" Silver alloy wheels – design 62	
	18" Dark Gunmetal alloy wheels – design 152	
	18" Grey alloy wheels – design 63	
Mudflaps:	Front	
	Rear	
Front fog lights:	Halogen bulb-type (SE / SE Nav models only)	
	LED bulb-type	
Rear roof spoiler (hatchback models only)	Brilliant Black	
Front airdam skirt	Brilliant Black	
Side airdam skirts	Brilliant Black	
Rear under skirt	Brilliant Black	
Rear bumper step protector		
Roof carrier system:	Attachment for Skis / Snowboards	
	Attachment for bicycles	
	Roof rack	
	Roof box, Pacific 200	
	Roof box, Pacific 780	
Tow bar:	Detachable	
	Attachment for bicycles	

● = Standard; ○ = Option available at additional cost.

<sup>1)</sup>Excludes models with 100ps petrol engines, which feature a single exhaust.

<sup>2)</sup>Rear window of Fastback models is a lighter shade than rear side windows due to rear central brake light visibility.

## SPECIFICATIONS

Interior Features		SE / SE Nav	SE-L / SE-L Nav	Sport Nav
Meter set display:	Active Driving Display (head-up display) – shows vehicle speed, warnings, and turn-by-turn navigation	–	–	●
	Analogue speedometer	●	●	–
	Digital speedometer	–	–	●
	Trip computer	●	●	●
Seats:	Driver's seat, manual lumbar adjustment	●	●	●
	Driver's seat, manual slide, recline and height adjustment	●	●	● <sup>2)</sup>
	Driver's seat, power slide, recline and height adjustment	–	–	○ <sup>2)</sup>
	Heated front seats with 3-stage settings	–	●	●
	Premium black cloth trim	●	●	● <sup>2)</sup>
	Black leather seats <sup>3)</sup>	–	–	○ <sup>2)</sup>
	Light Stone leather seats <sup>3)</sup>	–	–	○
Rear seats:	Head restraints	●	●	●
	Centre armrest with two cupholders	●	●	●
	60:40 fold down seats	●	●	●
Dashboard decoration panel:	Piano Black	●	●	–
	Silver	–	–	●
Steering wheel:	Leather-wrapped	●	●	●
	Paddle shift for automatic transmission	–	–	● <sup>3)</sup>
	Telescopic and tilt adjustment	●	●	●
Leather-wrapped gear knob and handbrake		●	●	●
Grab handles:	Front passenger's and two rear with coat hooks	●	●	●
Front centre armrest		●	●	●
Storage spaces:	Door pockets (driver, front passenger and rear)	●	●	●
	Glovebox with illumination	●	●	●
	Inside front centre armrest	●	●	●
	Seatback pocket (front passenger seat)	●	●	●
Interior courtesy light, with integral spotlight		●	●	●
Luggage compartment:	Light	●	●	●
Auto-dimming rear-view mirror		●	●	●

### Additional Interior Options

Scuff plates:	Front and rear stainless steel with Mazda3 logo on the front scuff plates	Please contact your dealer for further information and availability.
Alloy pedal set		
LED welcome illumination		
Cup holder organiser		
Garment hanger		
Front and rear floor mats:	Carpet floor mat, 'Standard', black	
	Carpet floor mat, 'Luxury', black	
Luggage compartment:	Boot light	
	Boot liner	
	Boot net	
	Boot storage box	
Cool and warm box		
First aid kit		
Mini combi bag:	Including first aid kit, warning triangle and high visibility jacket	

● = Standard; ○ = Option available at additional cost.

<sup>1)</sup>Leather refers to centre seat facing and side supports.

<sup>2)</sup>Black leather interior and power adjustable driver's seat are standard on the 165ps Sport Nav model only, and optional on all other Sport Nav models.

<sup>3)</sup>120ps Sport Nav Automatic and 150ps Sport Nav Automatic Diesel models only.

## SPECIFICATIONS

### Audio and Communications

		SE / SE Nav	SE-L / SE-L Nav	Sport Nav
Multimedia Commander:	Located between the driver and the front passenger, the Multimedia Commander allows easy control of the advanced connectivity and infotainment system, with information displayed on the 7" colour touch screen, includes a separate volume control dial	●	●	●
Mazda Multimedia System:	AM/FM radio, single CD / MP3 and six speakers	●	●	-
	AM/FM radio, single CD / MP3 with premium Bose® Centerpoint® surround-sound system and nine speakers	-	-	●
	7" TFT colour touch screen	●	●	●
	USB audio / iPod® connectivity <sup>2)</sup>	●	●	●
	Steering wheel mounted audio and Bluetooth® controls	●	●	●
	Auxiliary (AUX) jack input, with two USB inputs	●	●	●
Mazda Navigation System:	European mapping with alternative route calculations, point of interest search and 3-years free map updates	- / ●	- / ●	●
	Premium Connected Services including Live traffic and weather information, fuel prices and local search <sup>3)</sup>	- / ○	- / ○	○
Integrated Bluetooth®:	Allows hands-free calling and easy access to phone contacts via touch screen or commander as well as auto creation of voice tags. Includes audio transfer from compatible devices <sup>2)</sup>	●	●	●
	Aha™ app and Stitcher™ app integration (internet radio, Facebook, Twitter) <sup>2)</sup>	●	●	●

### Comfort and Convenience

Remote central locking with deadlocking	●	●	●
Smart remote keyless entry system	-	-	●
Engine start / stop button	●	●	●
Power steering:	Electronic power assist system (EPAS)	●	●
Cruise control with manual speed adjustment	-	●	●
Air-conditioning:	Dual-zone climate control	-	●
	Manual	●	-
Front and rear electric windows, with one-touch auto down/up for driver's window	●	●	●
Sun visors	Driver's and front passenger's, with covered mirror, illumination and ticket holder	●	●
Sunglasses holder (located in upper console)	●	●	●

● = Standard; ○ = Option available at additional cost.

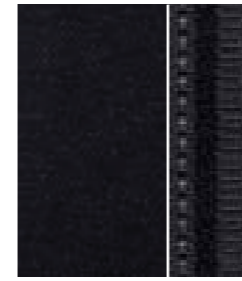
The following two footnotes refer to mobile and audio device compatibility. Please ensure that your device is compatible with the functions of all-new Mazda3.

<sup>1)</sup>Requires compatible Apple® or Android™ device. Aha™ / Stitcher™ apps need to be downloaded to mobile device and app registration completed before connection. Data usage and costs will vary, please contact your network provider for more information. Data usage relies on a valid data signal being available. These functions may not operate in areas of low signal strength.

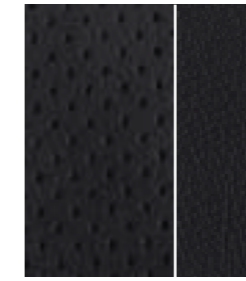
<sup>2)</sup>Please refer to [www.mazdahandsfree.co.uk](http://www.mazdahandsfree.co.uk) for the latest information regarding compatibility and functionality of mobile devices.

<sup>3)</sup>Connected Services require a subscription and compatible mobile device with valid data signal being available. These functions may not operate in areas of low signal strength. Please contact your dealer for further information.

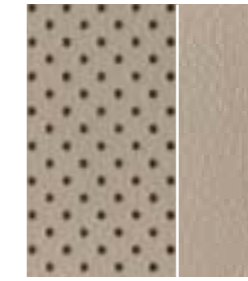
## COLOUR TRIMS



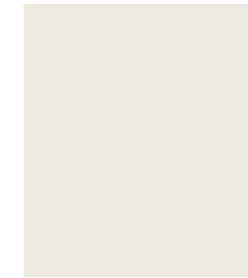
Premium Black Cloth (SE, SE-L and Sport Nav^\*)



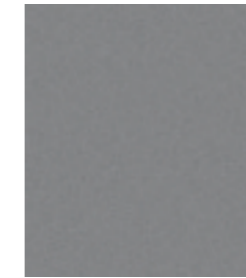
Black Leather\* (Sport Nav^\*)



Light Stone Leather\* (Sport Nav)



Arctic White Solid (A4D)



Aluminium Silver Metallic\* (38P)



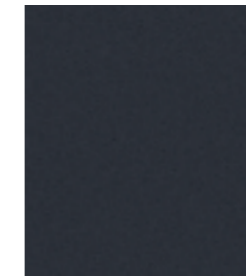
Blue Reflex Mica\* (42B)



Deep Crystal Blue Mica\* (42M)



Jet Black Mica\* (41W)



Meteor Grey Mica\* (42A)



Snowflake White Pearlescent\* (25D)



Soul Red Metallic\* (41V)



Titanium Flash Mica\* (42S)



### **Manufacturer's Warranty – 3-Year Cover**

Every Mazda is designed and built to the highest standards of performance, comfort and reliability. For your further reassurance, Mazda also provides a full 3-year / 60,000 mile warranty cover, Mazda Roadside Assistance<sup>1)</sup>, 3-year paintwork warranty and a 12-year anti-perforation warranty.

### **Free Mazda Accident Aftercare**

Mazda Accident Aftercare is designed to assist you following a road traffic accident. Should you ever be involved in an accident or need to make an insurance claim, 'Mazda First' will liaise directly with your insurer to process the claim and ensure that your vehicle is repaired at a Mazda approved bodyshop using only genuine Mazda parts, in addition to other benefits such as providing you with a free courtesy car and maintaining your Mazda warranties.

### **Mazda Contract Hire\***

Mazda Contract Hire offers low running costs with market-driven residual values, resulting in extremely competitive ownership costs for businesses and individuals. To find out more about the benefits of Mazda Contract Hire, please speak to your Mazda dealer or phone 0844 600 1410.

### **Digital Service Record**

The Mazda Digital Service Record (DSR) system provides increased security against counterfeit service documents and odometer tampering, and makes it easy to keep the service history up-to-date. Stored on a central database, the DSR replaces the traditional paper service book and ensures a secure, accurate and permanent service history for the life of the vehicle.

### **Your Mazda dealer:**

Mazda Motors UK Limited reserves the right to introduce changes in specification and equipment due to its on-going product development. Colour and trim samples shown in this brochure may vary from the actual colours because of the limitations of the printing process. It is recommended that you consult your Mazda dealer when referring to these.

<sup>1)</sup>Please visit [www.mazda.co.uk/buying-owning/buying/roadside-assistance](http://www.mazda.co.uk/buying-owning/buying/roadside-assistance) for more details on your Mazda Roadside Assistance coverage.

Bose®, the Bose logo, Richbass®, Nd® and AudioPilot® are registered trademarks of Bose Corporation in the U.S. and other countries. Used with permission.

The Bluetooth® word mark and logos are owned by the Bluetooth SIG, Inc. and any use of such marks by Mazda Motor Company is under licence. Other trademarks and trade names are those of their respective owners.

\*Mazda Contract Hire is provided by ALD Automotive Limited, trading as Mazda Contract Hire, Oakwood Park, Lodge Causeway, Fishponds, Bristol, BS16 3JA. Guarantees / Indemnities may be required. ALD Automotive Limited is incorporated in the UK and regulated by the Financial Services Authority in respect of general insurance products.

iPhone®, iPad® and iPod® are trademarks of Apple Inc.

May 2014.

**Internet: [www.mazda.co.uk](http://www.mazda.co.uk)  
Mazda Helpline: 08457 48 48 48**

