



N°5

# UPPER RIVERSIDE

GREENWICH PENINSULA





4

## INTRODUCTION

5

## THE NEIGHBOURHOOD

8

## LIFESTYLE

13

## THE INTERIORS

20

## THE CLUB

23

## FLOORPLANS

26

## GETTING HERE



**GREENWICH PENINSULA IS A DYNAMIC NEW AREA OF LONDON, BRINGING CITY BUZZ TO A WATER SIDE SETTING, FUELLED BY A CREATIVE SPIRIT.**

# WATERSIDE BUZZ

HOW DO WE DETERMINE THE FUTURE OF A CITY?

On Greenwich Peninsula, a uniquely modern area of London is emerging that harnesses an inventive spirit to create a truly forward-thinking neighbourhood. The £8.4 billion investment in the Peninsula is forging an entirely new community and a creative blueprint for the London of the future.

Combining cutting edge design with a vibrant cultural scene in a setting of wide-open skies and sweeping river views, it's a community with both creativity and relaxation at its heart. Wrapped by

the majesty of the Thames and only one stop from Canary Wharf, Upper Riverside is one of seven integrated and distinctive neighbourhoods that are rising up across the Peninsula.

From the entrepreneurial creativity of the Design District bordering the green swathes of Parkside, to the buzz of Peninsula Central with its boutiques and renowned restaurants, to the elevated garden walkway known as The Tide that connects it all – this progressive London destination will inspire a new concept for urban living.

▶ SAMPLE CHRISTMAS



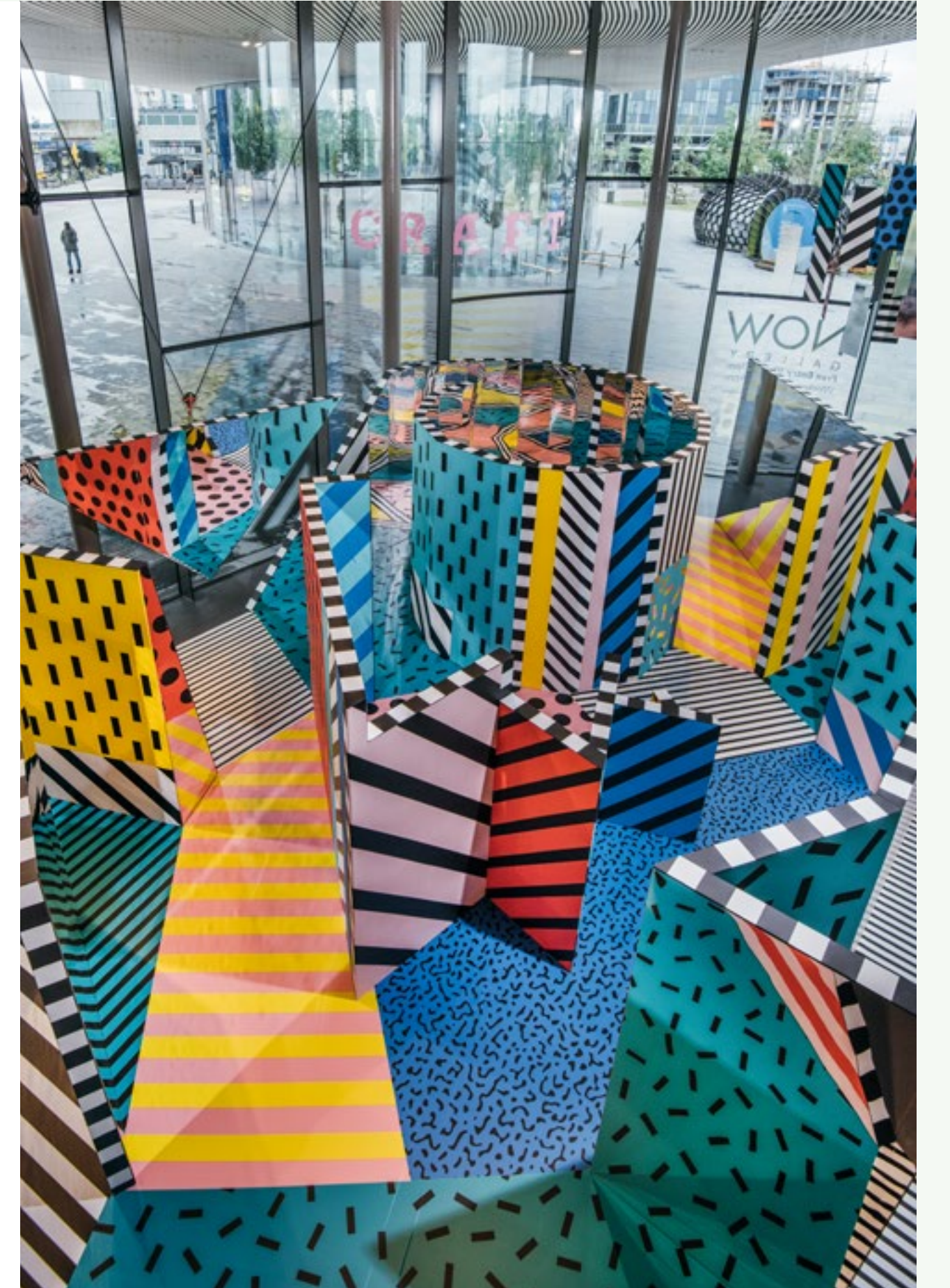
While Hackney and Peckham continue their ascent as London's über cool hotspots, Greenwich Peninsula has quietly laid the foundations for an ever-evolving creative scene. Born from a fierce independence, it's a community that thrives on the unknown and on its people being that little bit different.



## AGAINST THE FLOW



▶ WALALAXPLAY, THE NOW GALLERY



# LONDON REIMAGINED



Five shimmering glass towers look over the water not in opposition but in possibility. This is Upper Riverside, the latest striking addition to London's skyline, designed by globally renowned architects SOM, with elegant, undulating angles that nod to the shifting surfaces of the River Thames. The tallest of the family of buildings at Upper Riverside, No.5 sits at its North Eastern edge with dramatic views down river

towards the gleaming steel of the Thames Barrier.

While the family of five buildings share an architectural relationship inspired by the proximity to the water, the interiors have each been envisaged by a different design practice. Designed by Design Haus Liberty and Knight Dragon, No. 5 takes direct reference from The Thames and its shifting shoreline through their use of colour, form and texture.

# STEP OUTSIDE

WHERE CITY AND RIVERSIDE LIVING MEET



The five sleek towers are intersected by roof terraces cascading down to the water's edge. Here, landscape gardens provide seated terraces amongst reeds and mature trees. Around the sunken garden, designed in collaboration with London architects Neiheiser Argyros, pavement cafes and restaurants provide a buzzing social space for this new community.

The whole neighbourhood is intersected

by The Tide, a garden walkway designed by New York High Line's creators Diller Scofidio + Renfro in partnership with award-winning landscape architects GROSS.MAX. Walk along timber decked-bridges onto planted stepping-stones, through native trees and giant sculptures while contemplating on the surrounds at one of the mediation points designed by BeBox.





▼ BEVERLEY EAST, AUTHOR



▼ HARRIET KINGDON, THEATRICAL AGENT

# WHERE MINDS MEET



Home to a burgeoning collective of pioneering individuals united through creativity, Greenwich Peninsula has emerged as one of London's distinctive new riverside districts. Helping map out the future in this progressive neighbourhood is an interwoven eclectic mix of original thinkers – from designers and architects to artists and crafts people.



# TIME OUT

AN ATMOSPHERE OF EXPRESSION AND EXCHANGE TRAVELS THROUGHOUT GREENWICH PENINSULA'S SEVEN NEIGHBOURHOODS.

Around this vibrant riverside quarter a new London is emerging. Surrounded by vast skies and open waters, the Peninsula is a place with creativity at its heart – a community that encourages individuality rather than predictability.

Each of the neighbourhoods on the 150-acre Peninsula is distinct yet complementary. A short walk from the Marks Barfield designed NOW Gallery is the heart of the community, a new Design District where workshops, studios and labs for over 1,800 London creatives are housed in avant-garde buildings. Here on the edge of the Central Park, you'll find a collective of artists, designers, crafts people and new technology pioneers united by a shared creative spirit and supported by affordable workspaces.

This new community will connect with nearby Ravensbourne University that specialises in design, fashion and media. It continues in the footsteps of other artists who have been

inspired by the unique waterside urban setting. Damien Hirst lived on the Peninsula in a rented cottage near the Pilot pub where he made his first medicine cabinet. His two towering brass sculptures Hydra & Kali and Mermaid stand overlooking the Thames alongside other works including Allen Jones' Head In The Wind. Joining them are artworks of The Line, London's first contemporary art walk featuring Gary Hume's Liberty Grip.

Hume's impressive brass sculpture is one of many artistic riverside landmarks along The Tide, the artistic garden walkway and popular cycling/jogging route that will soon wrap the whole neighbourhood. With its distinctive striped pattern emulating the ebb and flow of the Thames, the open terraces along the walkway are scattered with grasses, wild flowers, and silver birch trees. Dotted along here are some of the OPO meditation portals designed by neuro-sonic soundscape pioneers BeBox.





Walk east past Antony Gormley's huge abstract sculpture Quantum Cloud, another of The Line's attractions, and you'll find The Jetty. This floating community garden/greenhouse is home to HEJ Coffee Roastery and a great little cafe with the sounds of boats chiming in the breeze adding to the relaxed vibe. Further along the riverside are the wetlands and hides of Greenwich Peninsula Ecology Park one of London's most tranquil spots.



The botanical hub of creativity and wellbeing of The Jetty contrasts with some of the Peninsula's more refined eating options. Next to each other on the ground floor of Upper Riverside you'll find Ardoa, the latest concept from the Vinothec Compass team, offering small plates from the Basque region. Founded and helmed by Chef Stevie Parle and designed by Tom Dixon, Craft's rooftop bar with 360-degree views and a lovely terrace continues the seasonal theme of the restaurant with classic cocktails using natural ingredients.



**HYDRA & KALI, MERMAID  
BY DAMIEN HIRST**

Damien Hirst's seminal 1988 group exhibition, *Freeze*, was staged a little to the west of the Peninsula, in Surrey Docks. His works that appear around the Peninsula formed part of his *Treasures from the Wreck of the Unbelievable* exhibition, which was staged in Venice in 2017. For this exhibition he created the mythical, nautical sculptures that told the story of an ancient shipwreck, the *Unbelievable*

presenting the works as its salvaged cargo.

The first two works to be installed from this exhibition are *Hydra & Kali*, a 17-foot-high sculpture depicting the Hindu goddess fighting a many-headed serpent and *Mermaid*, a bronze of a more familiar mythical figure. Over the coming months several other works from Hirst's 2017 show will be installed here.

# ART ON

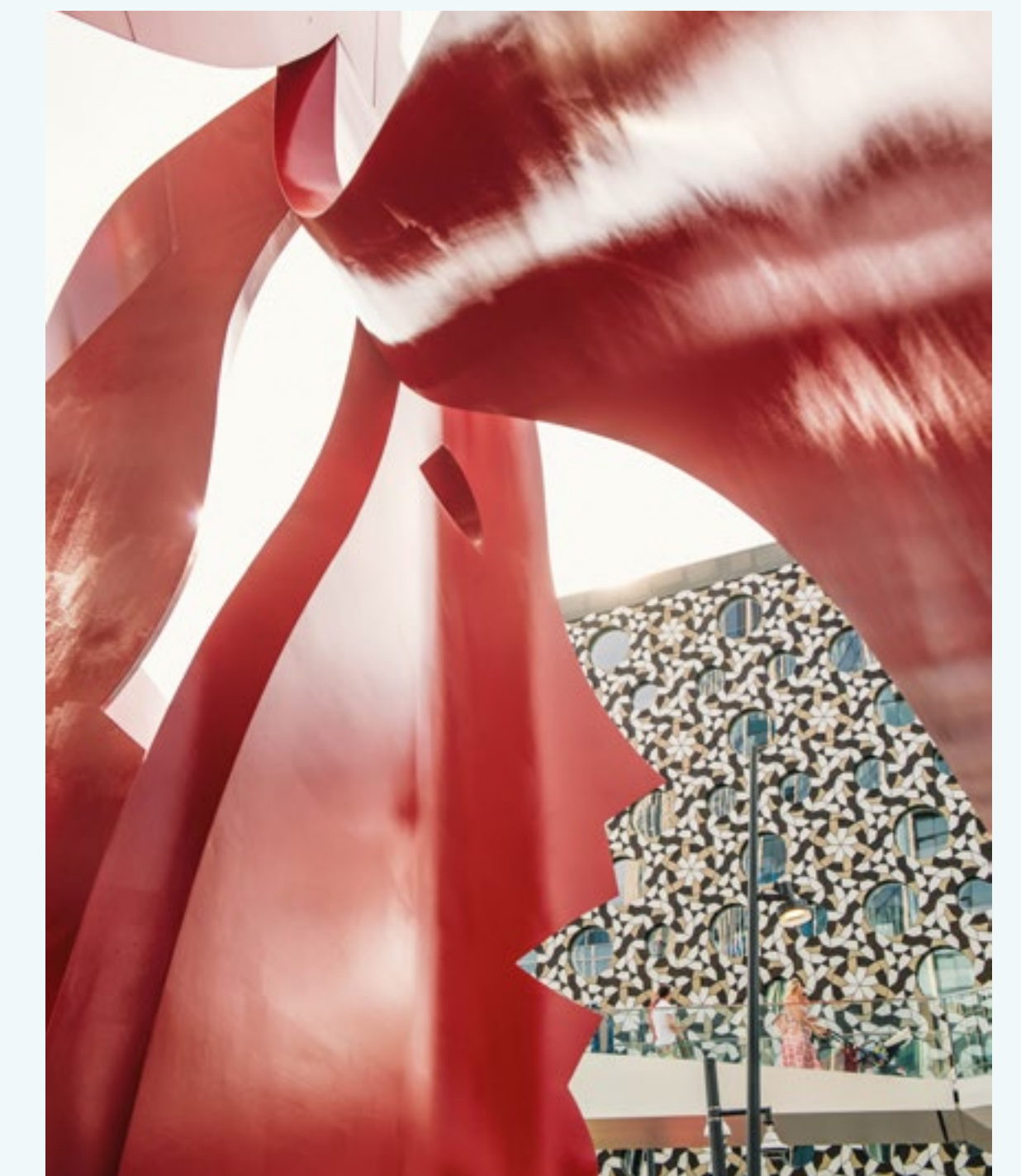
A NEW, RIVERSIDE  
LINEAR PARK  
ON GREENWICH  
PENINSULA WOULDN'T  
BE COMPLETE  
WITHOUT SOME GREAT  
NEW WORKS OF ART.  
LOOK OUT FOR GIANT  
MERMAIDS, SERPENTS,  
A SCULPTED RED HEAD  
AND MORE.

# THE TIDE

## HEAD IN THE WIND BY ALLEN JONES

The 81-year-old artist is best known for his highly sexualised pop-art sculptures, which have inspired such luminaries as director Stanley Kubrick and the Japanese fashion designer Issey Miyake.

*Head in the Wind* is a site-specific work commissioned for and inspired by *The Tide*. It takes its name from a much earlier piece by Jones made in 1959 years when he was a student in London. Visitors and residents are invited to both observe and interact with the vibrant, painted-steel piece from above and below for a different perspective on this huge artwork.

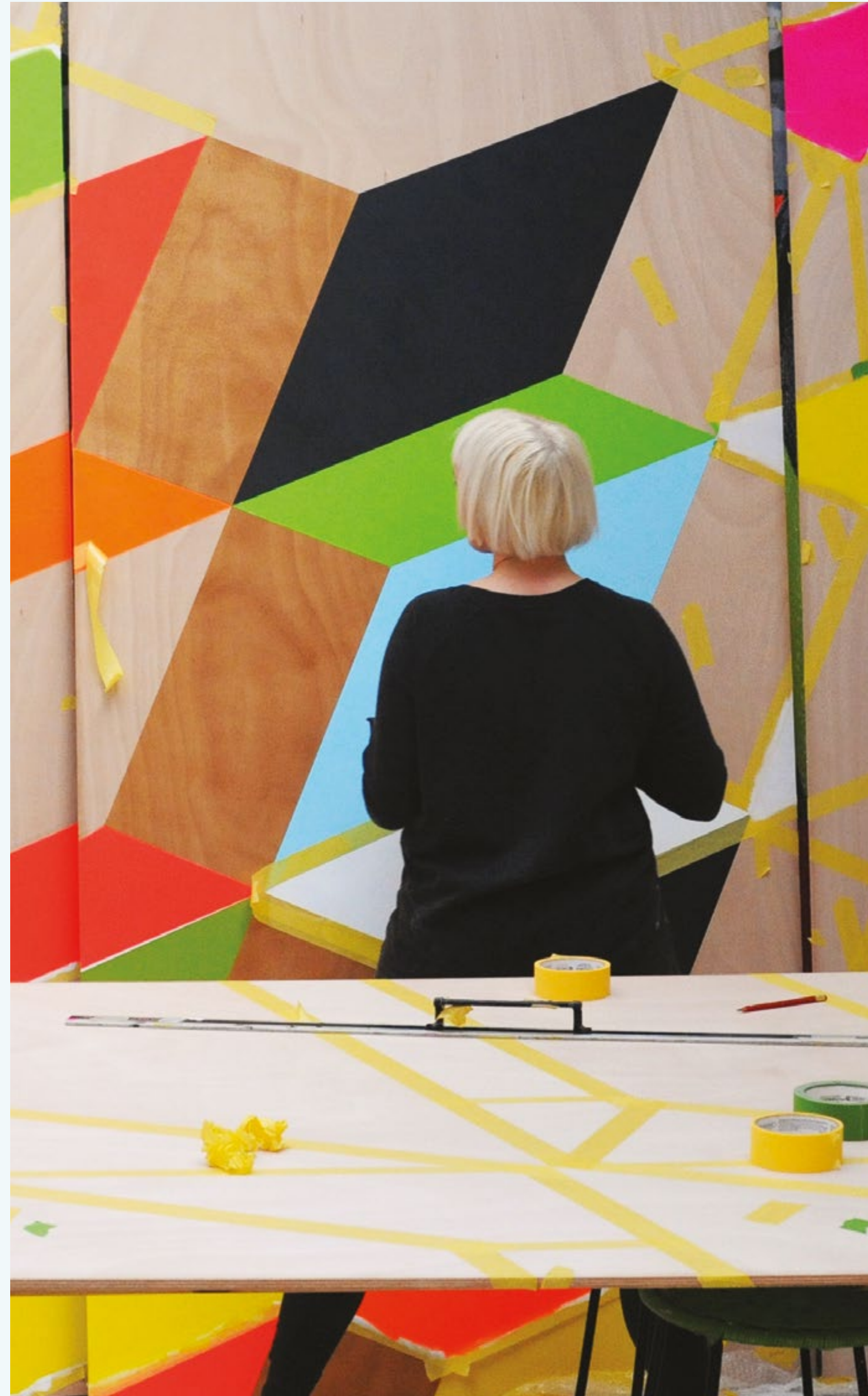


**MORAG'S STUDIO MYERSCOUGH CREATED THE COLOURBLOCK CRANES, THAT USED TO FRAME THE CONSTRUCTION OF THE UPPER RIVERSIDE NEIGHBOURHOOD.**

### **SIBLINGS BY MORAG MYERSCOUGH**

The award-winning designer and artist Morag Myerscough's has always lived in London and is fascinated by how colour, pattern and words can change urban environments. She has transformed public spaces such as schools and hospitals as well as town centres by creating engaging experiences for the community.

Visitors to the Peninsula might recognise her work as Morag's Studio Myerscough created the Colourblock Cranes, used to frame the construction of the Upper Riverside neighbourhood. Now Morag and her team have turned their attention to The Tide's arches on either side of the walkway, bringing warmth and illumination through her signature super graphics.



### **SEAFOOD DISCO BY STUDIO MORISON**

Heather Peak and Ivan Morison of Studio Morison create public works to improve the environments where people live and work. Whether it's a new library or a landscape for a school their work is all about finding ways that we can meaningfully reconnect with our nation's wild-places.

Back in the spring of 2019, Heather and Ivan charmed Peninsula visitors and resi-

dents with their NOW Gallery show, *The Mouse and his Child*, which was inspired by the cult children's book of the same name. The studio's whimsical, artisanal, all-inclusive fun continues, with the installation of a 27m long picnic table, which will sit along the riverside inviting the community to come together through public BBQs and pop up events.



► GENEROUS LOFTED CEILINGS



# INTERIORS

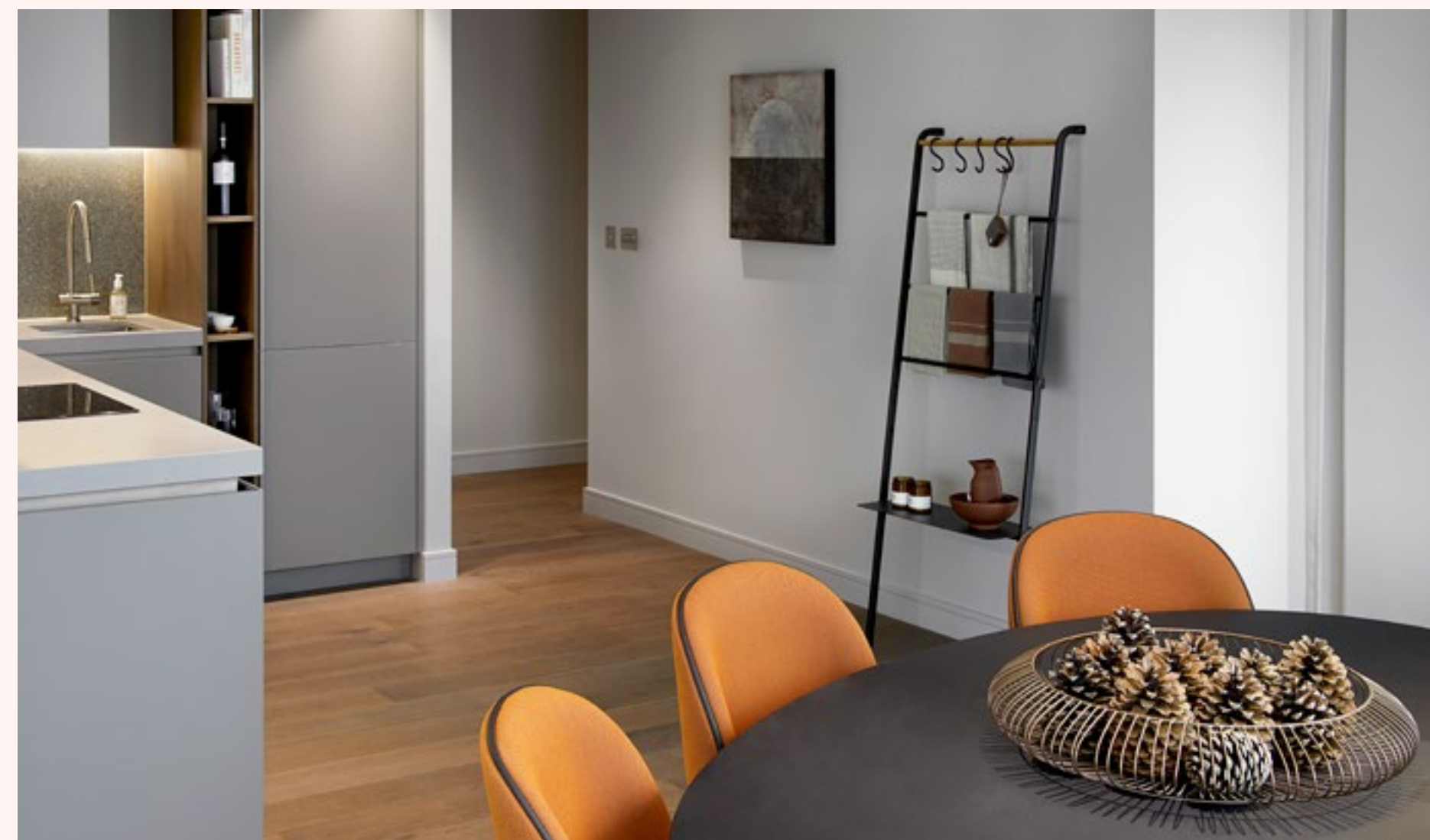


INNOVATIVE AND BESPOKE DESIGN IS AT THE HEART OF THE PENINSULA'S AESTHETIC. THIS EXTENDS TO THE INTERIORS OF EACH OF THE FIVE UPPER RIVERSIDE TOWERS THAT HAVE THEIR OWN DESIGN. AT NO.5 KNIGHT DRAGON HAVE DRAWN ON THE RIVER AND ITS SURROUNDING URBAN LANDSCAPE.



# ALL READY NOW

▼ DARK TONES THAT REFLECT THE OUTSIDE



With these apartments ready to move into now they will soon take on their own personality as this creative neighbourhood continues to grow.



**MIXING SOPHISTICATION WITH FUNCTIONALITY. DARK AND MID TONED PALETTES OFFSET THE STAINED OAK ENGINEERED FLOORING TO ADD CONTRAST THROUGHOUT THE ROOM.**

**OPEN PLAN LIVING AREAS IMPRESS WITH THEIR MOODY TONAL COLOUR SCHEME AND ENGINEERED STAINED OAK FLOORING A NATURAL BACKDROP FOR CONTEMPORARY FURNISHINGS.**





THE LARGE SCALE  
TERRAZZO AGGREGATE PANELS  
USED IN THE BATHROOM REFLECT  
THE STRATA OF THE THAMES  
SHORELINE.



▶ AMAZING VIEWS OF THE THAMES





# OUTSIDE IN

▼ INTERIOR DESIGNER JANE LAWRENCE



Jane works as the Head of Interiors at Knight Dragon. She was previously a director at Conran + Partners and is a contributor to design debates for FX, Sleeper and the RIBA. We met her to talk about the design team's approach to No.5 Upper Riverside.

## WHAT WAS THE OVERALL CONCEPT FOR THE INTERIORS OF NO.5?

This part of London still retains a real sense of its industrial past and the Thames is the dominant feature that surrounds the peninsula. We wanted to provide a sense of connection between the apartments and their surroundings by referencing the river, the shoreline and the urban landscape in our scheme.

## HOW DID THE RIVER AROUND UPPER RIVERSIDE INSPIRE THE INTERIORS?

The building has amazing views of the Thames. We were influenced by the changing nature of the river seen in the context of its urban surroundings. The light plays on the surface of the water and at times you get the contrast of deep blue-black with the copper, bronze reflections. This helped determine both our colour palette and our selection of materials.

## SO HOW DID YOU TAKE INSPIRATION FROM THE SHORELINE?

Given that the Thames is tidal, the edge of the riverbank here is always moving and offering up flotsam and jetsam. So that and the rich colours of the gravel shoreline were also an inspiration for our materials palette.

## YOU WORKED AS DIRECTOR AT CONRAN + PARTNERS. WERE THERE ANY PROJECTS THERE THAT YOU DREW ON FOR THE DESIGN AT NO.5?

When I was there I worked on a project for the Museum of London called London Before London. This exhibition was all about the pre-history of London and I learned that the river was not only an essential resource for the inhabitants but also a place for offerings. Working on that project made me think about the rise and fall of the tide and what it reveals.

## COULD YOU TALK A BIT MORE ABOUT YOUR SPECIFIC USE OF MATERIALS?

We always do a lot of research into finishes and we found a material with a large-scale terrazzo aggregate that referenced the shoreline very well, which we used in the bathrooms. We also used deep grey large format ceramic panels in the bathrooms and a smaller aggregate terrazzo in the kitchens.

## HOW DID YOU APPROACH THE COLOUR SCHEME?

There are two colour palettes for the apartments again inspired by the Thames. The main living spaces have been painted in warm greys and the bedrooms in deep greys. Rich stained engineered oak flooring has been laid throughout the living spaces and the bedroom wardrobe and kitchen ironmongery is in bronze, pewter tones.

## AND FINALLY, HOW WOULD YOU LIKE THE NEW OCCUPANTS TO RESPOND TO THE DESIGN?

I am a firm believer that creating a positive ambience in one's home is not just about colour and furniture selection but also good space planning and well considered design detailing. By which I mean if all of the component parts fit together like a jigsaw puzzle the design appears seamless and fluid.

I hope that the occupants have a positive emotional response to the design and feel a sense of connection with the surrounding landscape.



LIGHT SCHEME

BATHROOM SPLASHBACK

KITCHEN CABINETS

BATHROOM COUNTER

KITCHEN SPLASHBACK

KITCHEN COUNTER

BATHROOM WALL

KITCHEN CABINETS

BATHROOM COUNTER

KITCHEN SPLASHBACK

BATHROOM WALL

KITCHEN COUNTER

BATHROOM SPLASHBACK

DARK SCHEME



► The Thames is an imposing ever-changing confluence, expansive and dynamic with ever changing colours and a shoreline that reveals new materials at each tide. In their concept for the interiors at No 5, our designers have taken inspiration from this in their use of both colour and texture.

► The river's influence can be seen throughout the interiors of No.5 with light and dark gravel like textured tiles bringing to mind the shore as it is revealed. Tonally darker in design than the other family of buildings at Upper Riverside, No.5 uses earthy tones to further evoke the might of the Thames.



# THE CLUB

A relaxed and welcoming members' club, without the chore of having to get in.

▼ UNDISTURBED WORKING SPACE



Bringing together some of London's most celebrated designers, Tom Dixon's Design Research Studio, State of Craft and Studio Ashby, The Club is an eclectic mix.

▼ SUMPTUOUS, ELEGANT ROOMS



On Level 15 of No.2 is Renew, a temple to wellness designed by Tom Dixon that includes a state of the art exercise studio overlooking the river, private spa, and one of London's highest indoor pools with the City skyline as a backdrop. With terraces for lounging after a workout or steam bath, Renew also has showers, towels and lockers for runners and cyclists on their return from around the Peninsula.





THE CLUB IS WHERE ALL THE RESIDENTS COME TOGETHER, WHETHER AT  
FILM SCREENINGS IN THE CINEMA AT NO.5, AN OUTDOOR YOGA CLASS ON THE  
CASCADING OUTDOOR TERRACES OR AT WORK IN THE CO-WORKING SPACE.



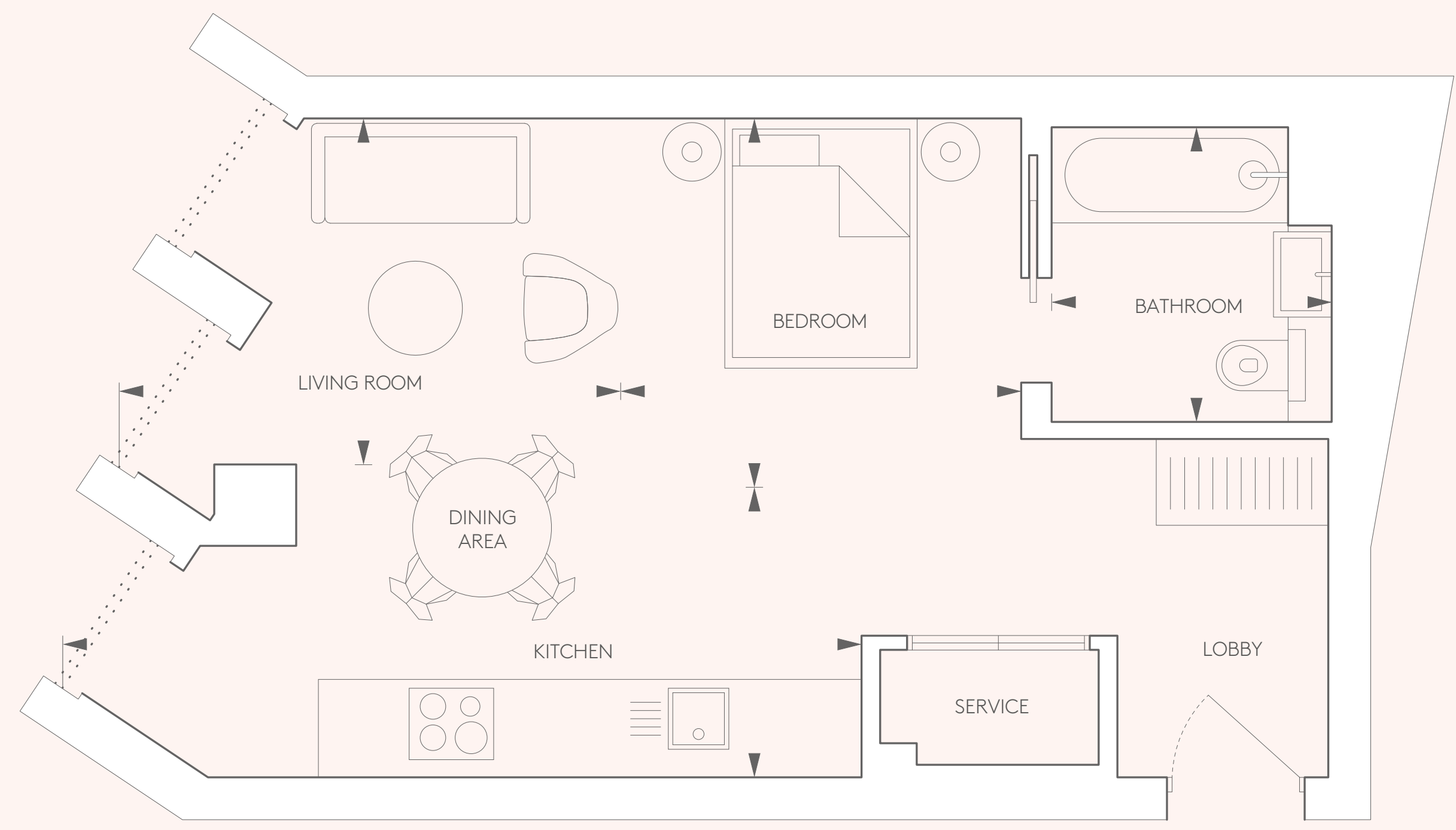
A coffee lounging on the modish furniture on the sun deck or a Manhattan in the residents lounge, The Club lets you wind down as well as work up a sweat. Neighbours meet in the sleekly designed lobbies to plan the day ahead or get creative in the co-working spaces where ideas become reality.



A striking feature of the architecture of Upper Riverside, the cascading terraces offer much more than commanding river views. Once part of the community you'll find yourself using the expansive terraces for everything from lunchtime meetings to outdoor Yoga classes and impromptu BBQ parties with new friends.



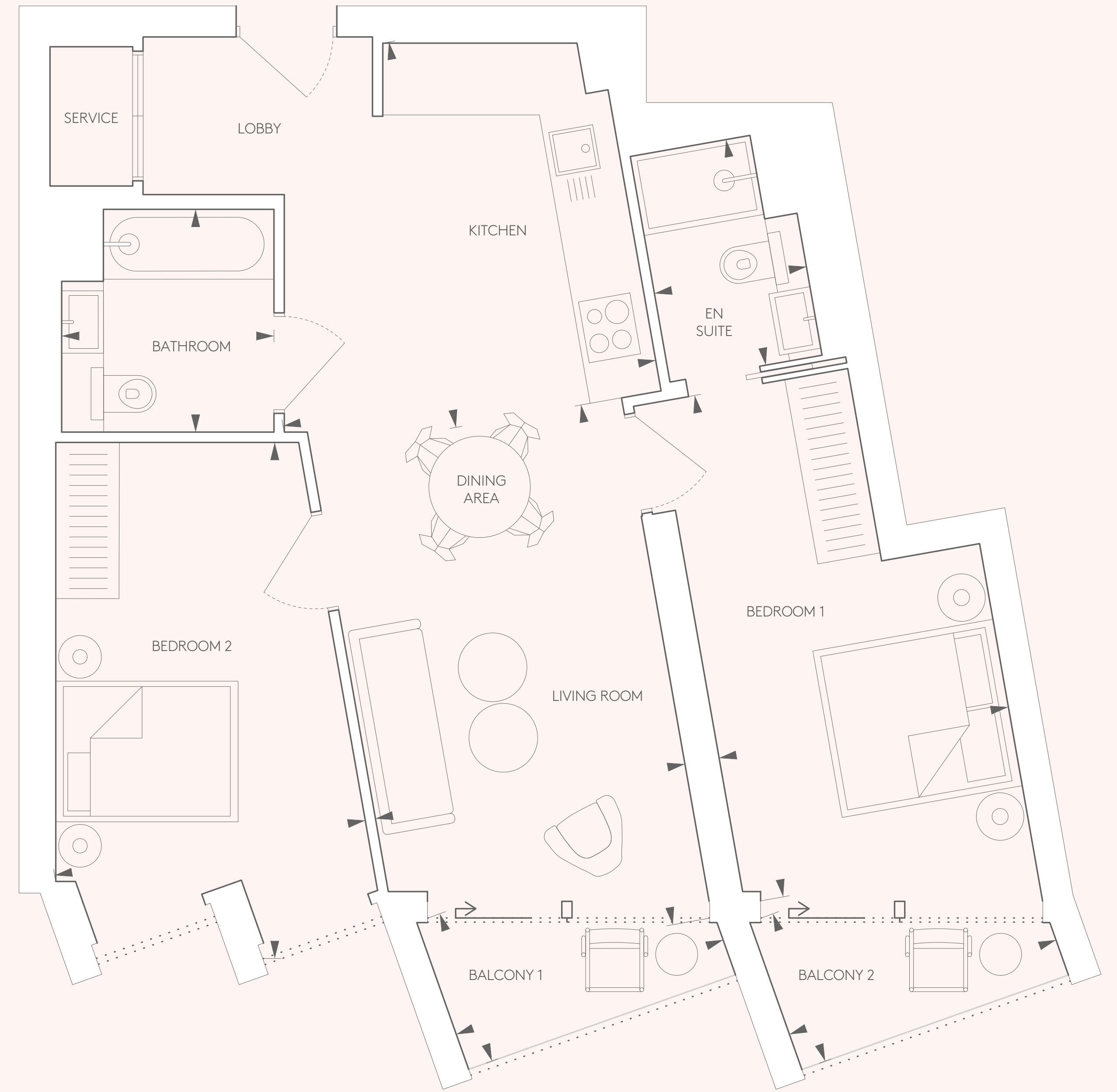
# FLOORPLANS



TYPICAL STUDIO APARTMENT

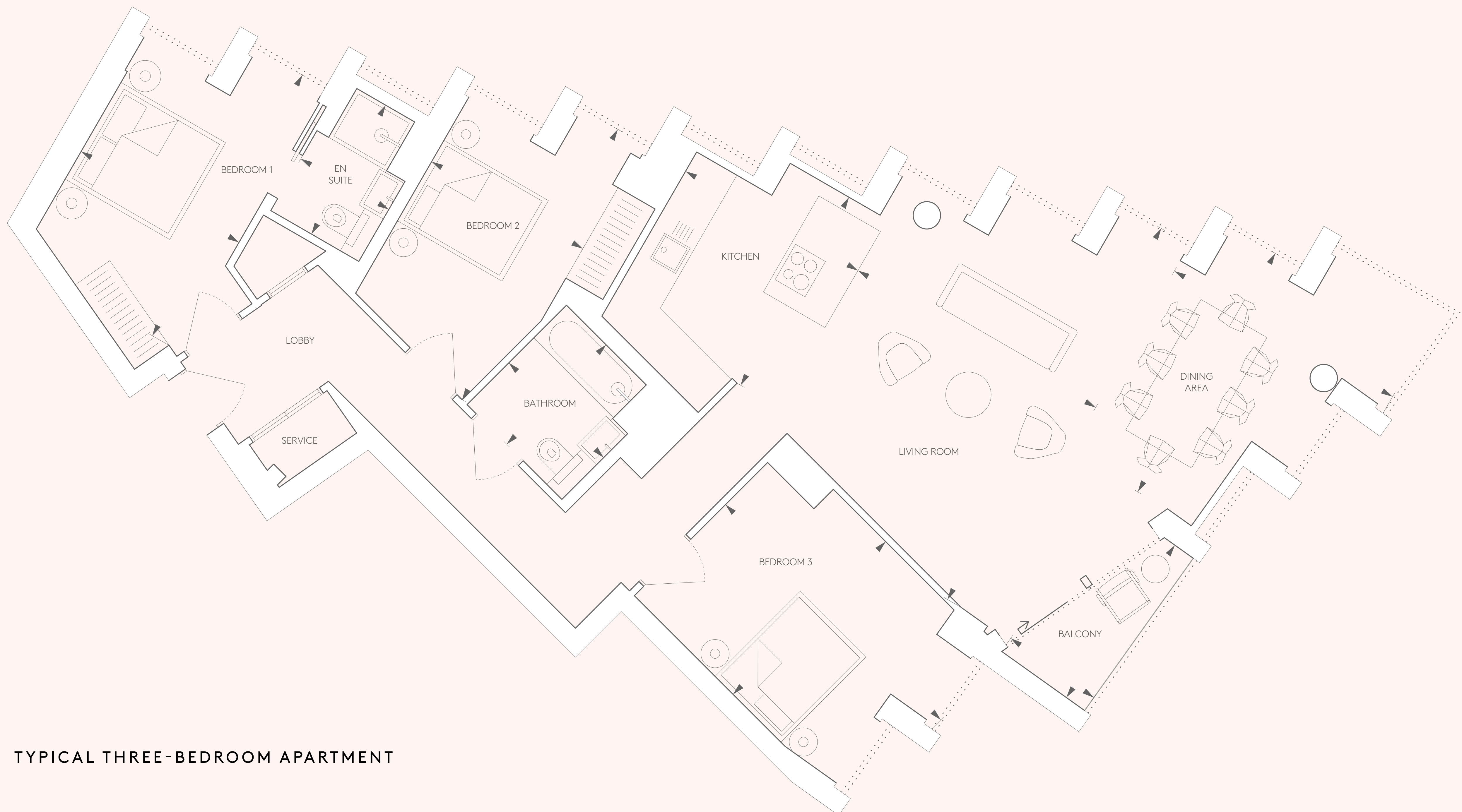


TYPICAL ONE-BEDROOM APARTMENT



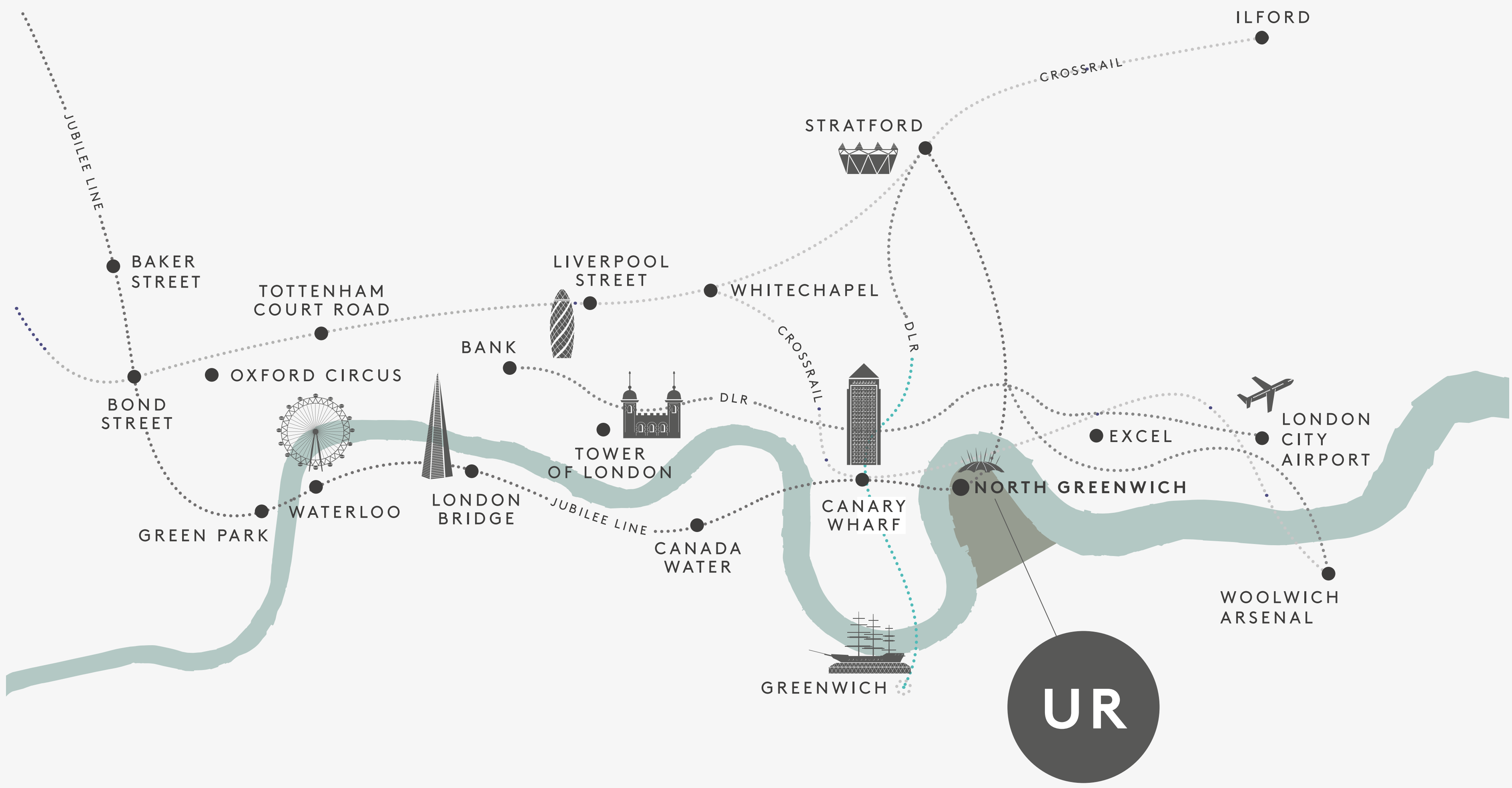
TYPICAL TWO-BEDROOM APARTMENT





TYPICAL THREE-BEDROOM APARTMENT

# GETTING HERE



### JUBILEE LINE

- ▼ NORTH GREENWICH
- CANARY WHARF 2 MINS
- LONDON BRIDGE 8 MINS
- STRATFORD 8 MINS
- SOUTHWARK 10 MINS
- WATERLOO 11 MINS
- WESTMINSTER 13 MINS
- GREEN PARK 15 MINS
- BOND STREET 17 MINS

### DLR

- ▼ CANARY WHARF
- BANK 10 MINS
- STRATFORD 13 MINS
- CUSTOM HOUSE 14 MINS
- LONDON CITY AIRPORT 17 MINS

### THAMES CLIPPERS

- ▼ NORTH GREENWICH PIER
- GREENWICH 8 MINS
- TOWER HILL 30 MINS
- LONDON BRIDGE 34 MINS

CATCH A RIVERBUS FROM YOUR FRONT DOOR, OR TAKE THE TUBE.  
THE JUBILEE LINE RUNS A 24-HOUR SERVICE AT WEEKENDS.

SURROUNDED BY 1.6 MILES OF RIVER ON THREE SIDES, WITH TUBE,  
BUS, BOAT, AND CABLE CAR LINKS.

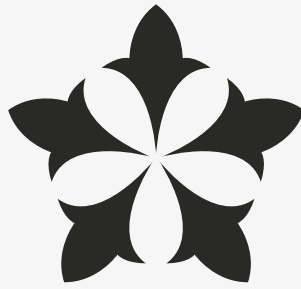


The information contained in this brochure and any other materials supplied to you by Knight Dragon Developments Limited (the “Company”) in relation to the Property at Greenwich Peninsula (the “Information”) does not form part of any offer or contract and must not be relied upon as statements or representations of fact. The Company does not represent that the Information is accurate, comprehensive, verified or complete, and shall accept no liability for the accuracy or completeness of the Information or for any reliance placed by any person on the Information. No representations, warranties or undertakings are given in relation to the Property. Any representation, condition or warranty which might be implied or incorporated into the Information by statute, common law or otherwise is excluded to the fullest extent permitted by law.

All of the text, photographs, images and plans shown in relation to the Property are indicative and are not necessarily comprehensive. Any areas, measurements or distances given are approximate only. Any reference to alterations to, or use of any part of the Property is not a statement that any necessary planning, building regulations or other consent has been obtained. These matters must be verified by any intending buyer/lessee. Any intending buyer/lessee must satisfy himself by inspection or otherwise as to the correctness of any information given about the Property.

The Company will not be liable to any recipient of the Information for any loss or damage, whether in contract, tort (including negligence), breach of statutory duty, or otherwise, even if foreseeable, arising under or in connection with use of, or inability to use, the Information. In particular, The Company will not be liable for: loss of profits, sales, business, or revenue; business interruption; loss of anticipated savings; loss of business opportunity, goodwill or reputation; or any indirect or consequential loss or damage. Nothing in this disclaimer shall exclude the Company’s liability for death or personal injury resulting from the Company’s negligence.

All intellectual property rights whether registered or unregistered in any information, content, materials, data or processes contained in the Information belong to the Company or its licensed source. All rights of the Company in such intellectual property are hereby reserved. No part of the Information may be reproduced in any material form (including storing it in any medium by electronic means) without the written permission of the copyright owner.



KNIGHT DRAGON



[WWW.GREENWICHPENINSULA.CO.UK](http://WWW.GREENWICHPENINSULA.CO.UK)