



2-20-2 YOYOGI UEHARA



Hideaway

"We want people to focus on phenomena such as the ever-changing light of the sun, the swaying of trees, the sound of water, and the singing of birds. We've created a home built for longevity with a design that will never feel tired."

- Hiroshi Nakamura, Architect and Founder of Hiroshi Nakamura & NAP

A bamboo fence leads
To freewheeling paradise
House, home, heritage.

"There's a beautiful harmony in this house.
It redefines modern Japanese living with a distinct sense of place."

- Chad Chanvipava, Designer and Founder of Studio Philo

2-20-2 Yoyogi Uehara

A Home Like no Other

Discreetly positioned; traditional meets contemporary.

Withdraw to the quiet spaces in a place where time stands still and all five senses are awoken. Traditional craftsmanship interweaves across all levels striking a balance between past and present.

Spaces take inspiration from the peaceful Edo Period when artisans were revered and culture adored.

Harmony permeates experiences where indoors and outdoors blur for dreamy memories. Water flows as light dances with restrained abandon. Journey through the organic flow of the property and discover paired back vignettes executed with exclusive materials. Flexible rooms cater to a myriad of moods and usages.

Anchored by a warm oak wood staircase that guides you between floors, 2-20-2 Yoyogi Uehara is a modern hideaway in the beating heart of the Shibuya ward. Softly curated landscape permeates the interior spaces where geometric lines and planes echo times gone by.

Realised in conjunction with Hiroshi Nakamura & NAP and Studio Philo, tranquility abounds in modern minimalism. Find peace and calm in the consistency and familiarity of treatments that include natural woods, travertine, and white plaster.



The Neighbourhood

The Very Best of Both Worlds

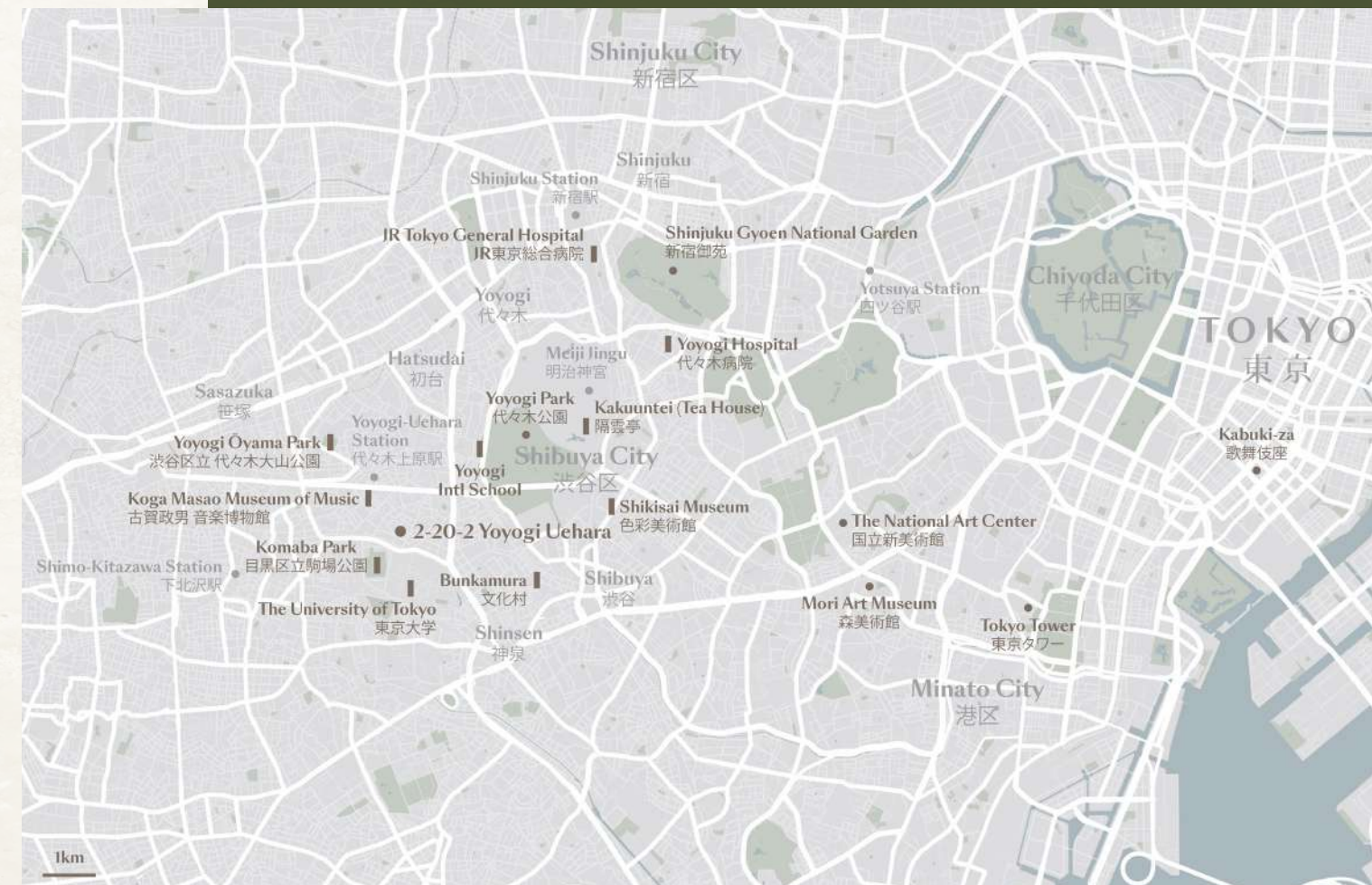
Nestled between the buzzing wards of Shinjuku and Shibuya, Yoyogi Uehara is a tranquil oasis; the perfect antidote to big-city living. Luxurious shopping avenues of Omotesando await just five minutes away, and in just 15 minutes, Tokyo Tower beckons.

This inner-city neighbourhood is home to an eclectic mix of local and international residents, including numerous diplomats who thrive in a district full of contrasts. With Haneda International Airport accessible by car in just 25 minutes, the microcosm is a dream for homeowners who embrace an international lifestyle rooted in traditional values.

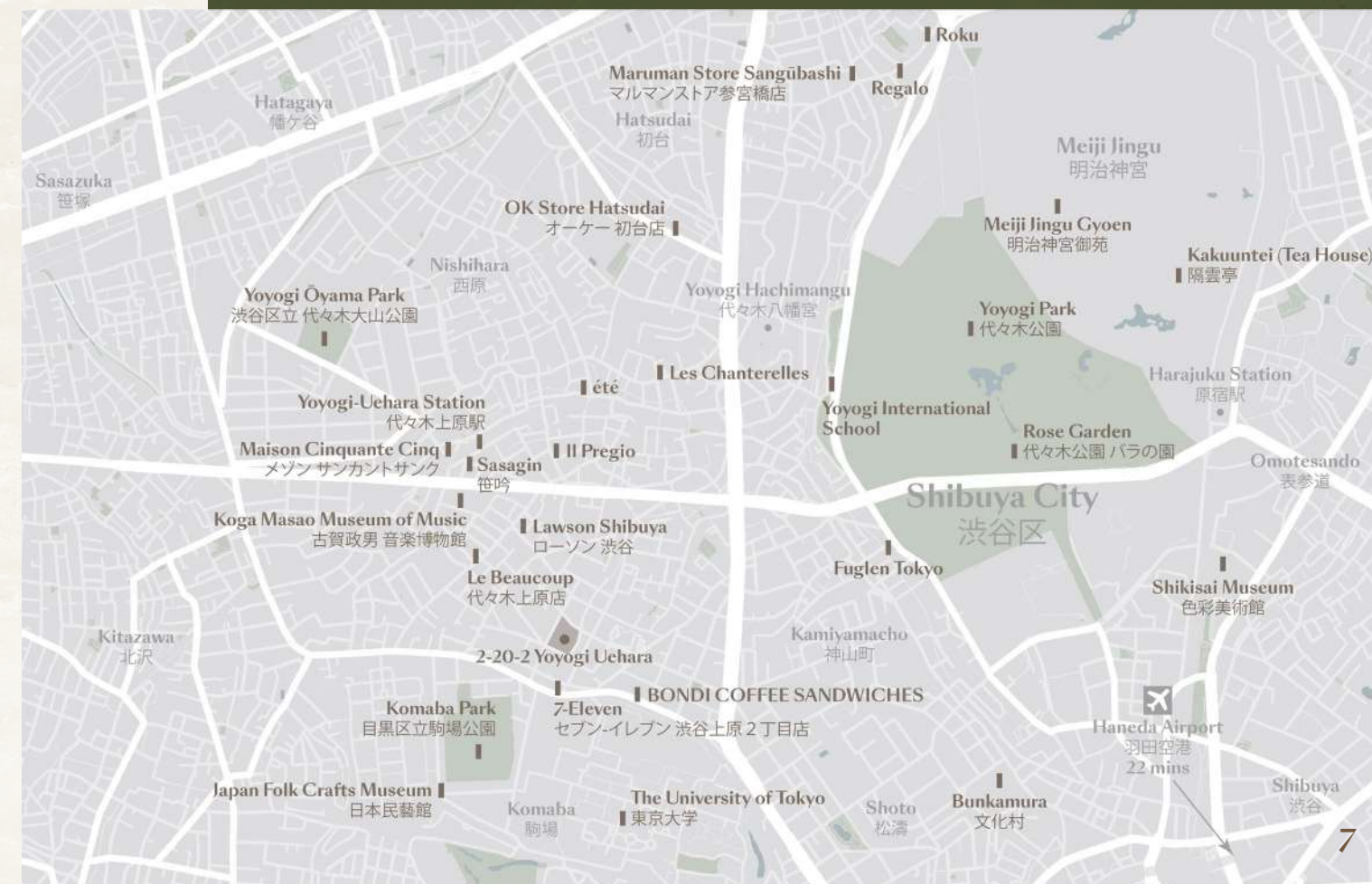
Yoyogi Uehara's culinary scene reflects its refined temperament serving a global menu of delicacies alongside exceptional local fare. Ramble along the alleyways and discover historic temples, sacred shrines, and striking mosques each offering quiet places for contemplation.

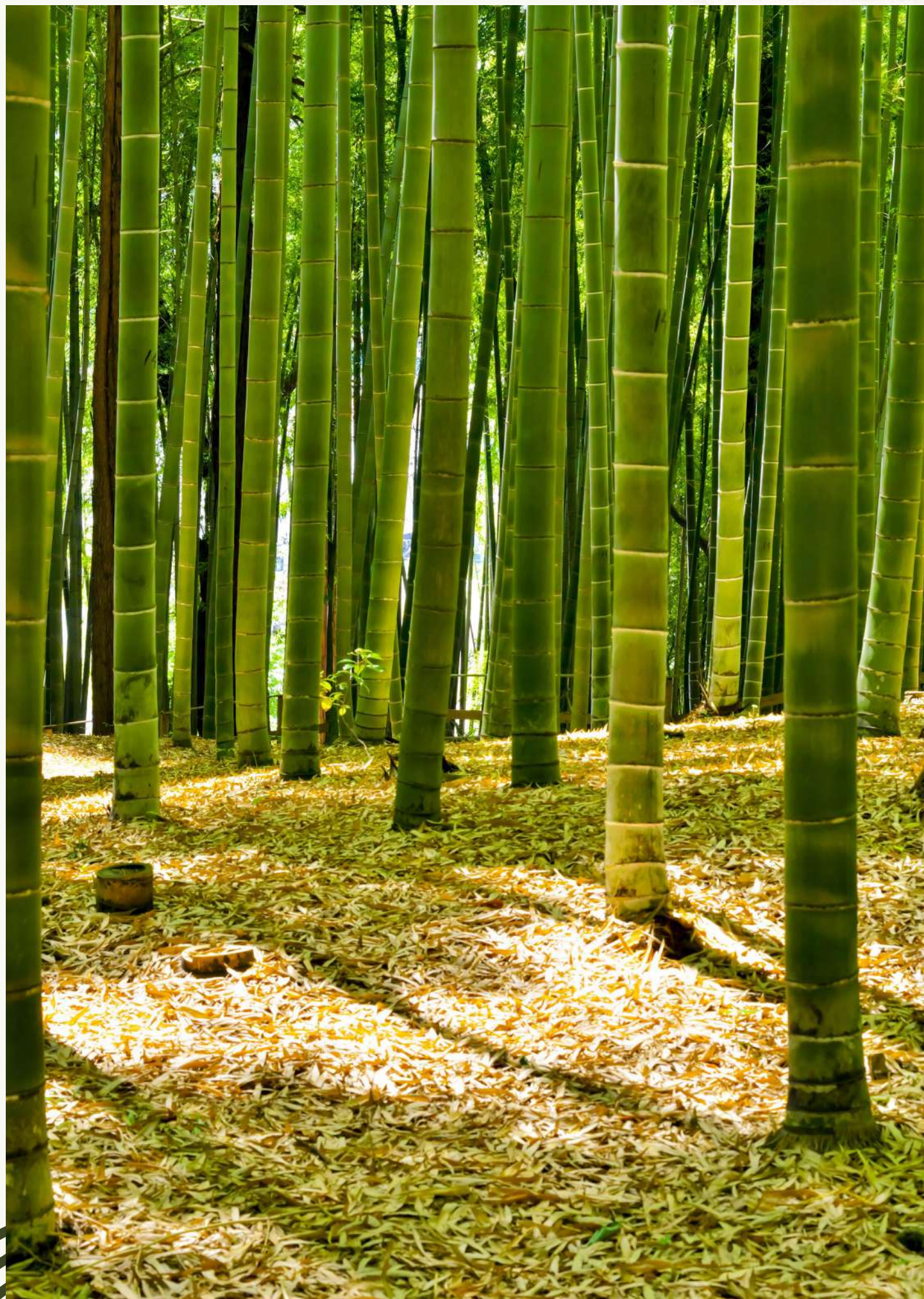
Forest-lined pathways lead to sprawling Yoyogi Park with seasonal iris gardens, weekend markets, and tranquil moments promised.

This is home.



Yoyogi Uehara





Development Details

A Refined Residence

The journey to this urban sanctuary starts on the approach, where a bamboo fence invites you inside the grounds. Smartly secluded on a gentle plateau, the property resides at the end of an attractive private road where a handmade stoneware tile façade awaits.

Despite the expansive area of this hideaway, it sits peacefully on its square site thanks to the thoughtful design by Hiroshi Nakamura & NAP that has considered even the tiniest details. Smartly executed symmetry in the floor plan allows spaces to flow effortlessly.

In the entrance hall, light pours down through the ceiling of the porch through the water basin and

the shadow of water ripples at your feet. A natural flow moves you through this architecturally minimalist property where consistent materiality repeats for familiarity in gentle surprises.

Taking cues from the family who resided on the land during the Taisho Period, everything from the choice of foliage to the geometric perspectives harks back to days gone by, albeit with a contemporary twist.

Made for moments of stillness and long-lasting memories, 2-20-2 Yoyogi Uehara takes your breath away.

■ Area	1036.381 square metres
■ Residences	1
■ Stories	4
■ Fabrication	Handmade stoneware tile
■ Access	Individual access to the residence. Control access from the street and garage. Security A gate secures the complex
■ Parking	Secure garage parking available for three cars
■ Facilities	Swimming pool, gymnasium, entertainment room, spa, lounge, steam sauna, laundry, storage, maid's quarters, three-car garage, kitchen, pantry, formal living room, formal dining room, two bedrooms, master bedroom with en-suite



History Imbues Future

The site was home to the main residence of the Kishu Tokugawa family and existed on a large estate called Seiwa-en.

In the 1930s, it was developed as an upmarket residential area. The guest house remained afterwards, and its stately buildings have been loved throughout the ages.

These days, the locale is renowned for its luxe lodgings with 2-20-2 Yoyogi Uehara bringing unprecedented style to the sought-after mansion district.



“You really have a sense that you’re in Tokyo here. And the style of living, in terms of how the home is laid out; how it flows; its specifications and materials, it’s an incredibly unique offering.”

- Luke Fehon, Chairman of Fuin Holdings

Hiroshi Nakamura & NAP

A Tokyo native, Hiroshi Nakamura completed his master's degree in architecture at the Graduate School of Science and Technology, Meiji University in 1999. Since then, he has honed his craft at renowned, world-class architecture studio, Kengo Kuma & Associates.

In 2002, he established his practice Hiroshi Nakamura & NAP with a focus on projects that look to a holistic creation between architecture, nature, and the humans who inhabit the spaces. Renowned both locally and internationally for his creative use of materials and shapes, at 2-20-2 Yoyogi Uehara, Nakamura and his team have crafted a future residential icon in the heart of the neighbourhood.

"I wanted to design a stately mansion suitable for the present age based on its history."

- Hiroshi Nakamura, Architect and Founder of Hiroshi Nakamura & NAP

A New Architectural Landmark

The Stately Mansion Inspired by Yesteryear

An award-winning architectural design office, Hiroshi Nakamura & NAP has envisioned a distinctive home enchanted by the very essence of the location. Mathematical precision meets creativity in a design that exceeds expectations with individual character yet carefully respects the esteemed environment.

Through carefully considered treatments, a quiet refuge is achieved with natural light abundant in every room courtesy of the central courtyard. There, a façade that features NAP's eponymous glass bricks, a refreshing texture reminiscent of a waterfall at once evokes calm.

Designed for longevity, materials reflect those repeated in Japanese architecture across the ages. Often chosen to line the walls of castles and the beloved preferred medium for famed sculptor Isamu Noguchi, Aji stone features in the entrance as a gateway to dignified experiences.

The ripples of the water basin, the curtains swaying in the wind, the flickering of the leaves, and the sound of the birds stimulate all five senses.

There are discoveries to be made here, and it leads to a rich daily life.



Studio Philo

Studio Philo is an international contemporary design studio. Studio Philo's sharp take on the world is re-told through the lens of a rich understanding of history, heritage, and visual identities.



Interior Design Details

Classic Minimalism Meets Modernity

People, places, and environments harmonise in the inner sanctum of the home.

As a first point of call, Studio Philo derived influence from the neighbourhood's unique heritage during the Taisho Period. Exquisitely finished, each floor is an exercise in peaceful minimalism.

Travertine, with its wood-like waves, and light oak flooring guides you across the four levels with white plaster rounding out the textured

trio. Horizontal and vertical lines pay homage to the Shoji screen doors favoured during the Period, while abundant natural light contrasts sensitive shadows enkindling a chiaroscuro effect throughout the dwelling.

Exacting design meets unrivalled craftsmanship and specification to stunning effect.



“The name Yoyogi can be traced from the Edo Period, and it was given the moniker: ‘generation old trees’. I found inspiration in its history and meaning; to create a space that adheres to nature, comfort, and my interpretation of the Edo Period.”

- Chad Chanvipava, Designer and Founder of Studio Philo



Organic Dynamism

Colours from Nature

Beloved Yoyogi Park offered inspiration for the shades and hues selected for the spaces. Refined neutrals are complemented with warm green and blue accents grounded in nature. A familial pause from life's enduring movement.

Revel in a quality of life and a style of living previously unavailable in Tokyo.



Spaces Styled

Room to Breathe

Close the door on the bustling world and discover a tranquil haven of calm respite. Studio Philo echoes the minimalist interiors through refined furnishings crafted from warm woods and neutral soft fabrics.

Organic forms contrast linear structures across spaces. Bespoke marble creations sit next to high-end fixtures, where horizontal and vertical lines consistently echo.

Furniture pieces are the creation of French designer Christian Liaigre whose work is famously influenced by traditional Japanese culture. Slip-cover furnishings speak to the minimalistic aesthetic of the wabi-sabi movement while acting as modern art pieces in their own right.

Light-filled luxury awaits casual abandon.



Oak Wood

Provides a familiar feeling of peace and calm as well as intergenerational wisdom



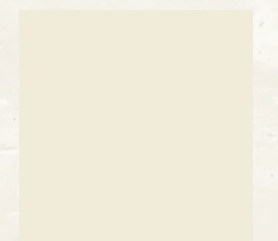
Travertine

A symbolic shade associated with suaveness, sophistication, respectability, and mystery



Parchment

The colour of naked ceramics, which represents openness, authenticity, and timelessness



Epoxy Resin

Resembles a mild skin tone, providing a subtle touch of human warmth

Carefully Crafted Experiences

Outdoor Outlooks

Alongside the architectural design for the property, Hiroshi Nakamura & NAP was tasked with the exacting role of Landscape Design for 2-20-2 Yoyogi Uehara. An iconic long a symbol to welcome guests from near and far, warmly greets both visitors and occupants.

On this land, where the Tokugawa family's mansion once stood, a garden reminiscent of the Momijidani Garden of Wakayama Castle, the main castle of the Kishu Tokugawa family, has been recreated in a contemporary style. Maple trees, water, and a garden full of blooming hollyhocks, which is seen in the Tokugawa family crest, all feature in the landscape architecture, culminating in an idyllic horticultural setting.

Onsite, a 100 sqm courtyard offers space for reflection alongside a remarkable al-fresco dining area that sits as one with nature. A jewel in the crown, the rooftop terrace allows owners to entertain across 95 sqm of space complete with loungers and pergola.

To ensure privacy, a glass brick wall was installed between the adjacent building and on the façade, blocking out the noise of the neighbourhood while maximising the amount of sunlight.

Blurring the lines between in and out, an omnipresent tranquillity.



Kitchen Design

Gather for Sharing

Across every space in this thoughtful property, repeated materials have been manoeuvred uniquely crafting peaceful spaces that feel like home. The kitchen is for connection and sharing, with marble countertops sitting next to bespoke oak cabinetry for understated elegance.

Replete with world-class appliances from brands including Miele, Gaggenau, and Dornbracht, the light-filled space flows into the al-fresco dining area, where meals can be taken in nature.



The Residence

Tokyo's dream location has a new upscale address at 2-20-2 Yoyogi Uehara. Designed with a sense of place in mind and with a nod to the land's esteemed history, this residence radiates understated refinement.

Generously proportioned over 1000 sqm, this is a modern home with inspiration taken from the Edo Period, a time in Japan's history filled with perpetual peace, and when arts and culture flourished.

Brought to life by a prestigious team of architects and designers innately connected to the location, exquisite craftsmanship heightens authentic experiences here. Transcending the four floors of this rare residence, a minimal approach to interior architecture opens doors to serene spaces where light and shadow dazzle across the day.

2-20-2 Yoyogi Uehara elevates contemporary living and enchants with inviting natural materials

such as oak wood juxtaposed against the likes of arabescato marble. Reflections of bygone days, seen in geometric lines and planes contrast contemporary amenities, including a spa-like wellness retreat for daily rejuvenation.

This beguiling private residence is suavely surrounded by elegant landscaping, carefully considered and featuring calming water elements alongside endemic Maple Trees to create quiet areas for respite. Here, time stands still.

Yet mere steps from the perimeter, an eclectic mix of epicurean haunts await exploration as well as charming independent boutiques that call the neighbouring alleyways home.

Revel in the stillness and solitude bathed in natural light and complemented by both minimal materials and interior architecture.

Enter your elevated daily experience.



Overview & Floor Plans

The entrance experience at 2-20-2 Yoyogi Uehara evokes tranquillity and calm, as a long hallway beckons you inside. On the first floor, entertaining takes place across the formal living and dining areas. A light-filled kitchen executed in oak wood brings the outside in by connecting to the al-fresco dining area which sits affront the expertly landscaped courtyard and contemporary water basin.

Up the marble stairs, the top floor is for relaxing with the expansive master bedroom, complete

with en-suite bathroom and Hinoki bathtub handcrafted from cypress wood. Floor-to-ceiling windows on this level bathe spaces in natural light, including two further bedrooms with en-suites, one with a balcony.

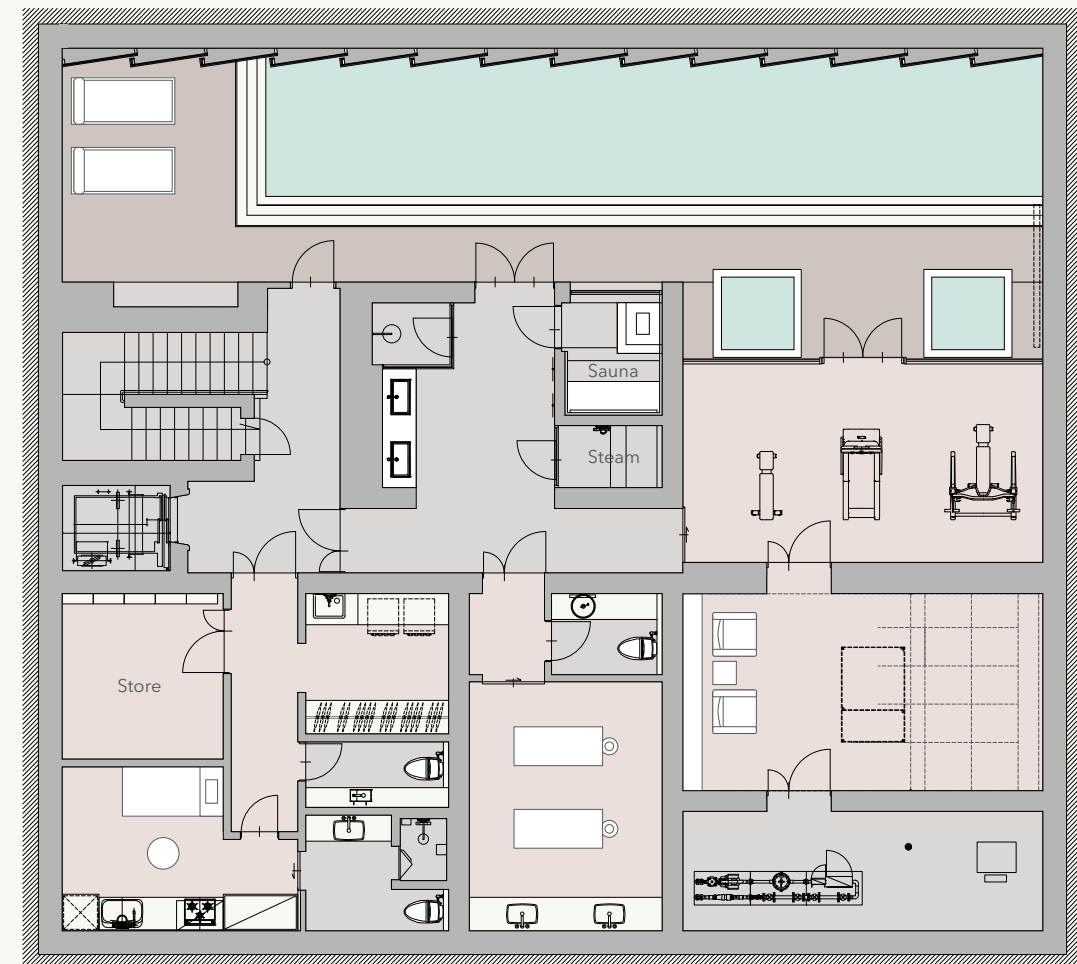
On the lower basement level, a wellness hub features a lap pool alongside a curated fitness studio, steam/sauna facilities, and entertainment room. While the basement area is home to the spacious garage, large enough to house three cars and inclusive of a turntable for manoeuvring.

B2

Energy Meets Escape

Over 346 sqm, the lower basement level of the home provides a dedicated area for mindful wellness. Escape to a secluded subterranean space and spend time at the gymnasium which is fitted with top-of-the-line equipment. Welcome or close the day with laps in the long pool, or revive with a steam or sauna session.

This floor also hosts the laundry room, complete with high-end appliances from Miele, alongside generously proportioned storage facilities, an entertainment room, and spacious quarters for a housekeeper.





■ Laundry Room

Discreetly located on the lower basement level, the functional yet stylish laundry area is home to world-class appliances from Miele. The space creates a simplified workflow with a generously proportioned hanging rack and oversized basin.

■ Storage

Capacious and functional, the storage area of the home spans 12 sqm and allows for seasonal equipment, travel luggage, and surplus accessories to be housed out of view.

■ Entertainment Room & Golf Simulator

The residences entertainment room houses a large projector screen for casual viewing, and to transport yourself to golf courses around the world right from the comfort of your own home. A virtual golf simulator with all new technology makes indoor golfing limitless and impactful in improving your game.

■ Housekeeping Staff Quarters and Bathroom

Thoughtfully designed with privacy in mind, the substantial staff quarters encompass over 20 sqm and includes a bedroom studio complete with kitchen and bathroom.

■ Gymnasium

Continuing the refined aesthetic of the home, the gymnasium awaits with natural oak wood flooring and glass-panel windows allowing for views of the neighbouring long pool. A selection of cardio equipment, resistance training machines, and weights will support your training goals in this private fitness studio.

■ Swimming Pool

Immerse yourself in the long pool that stretches over 15 metres, and is engulfed by travertine. A retreat for families of all ages, the heated pool provides a place to make memories, no matter the season.

■ Hot & Cold Pluge Pool

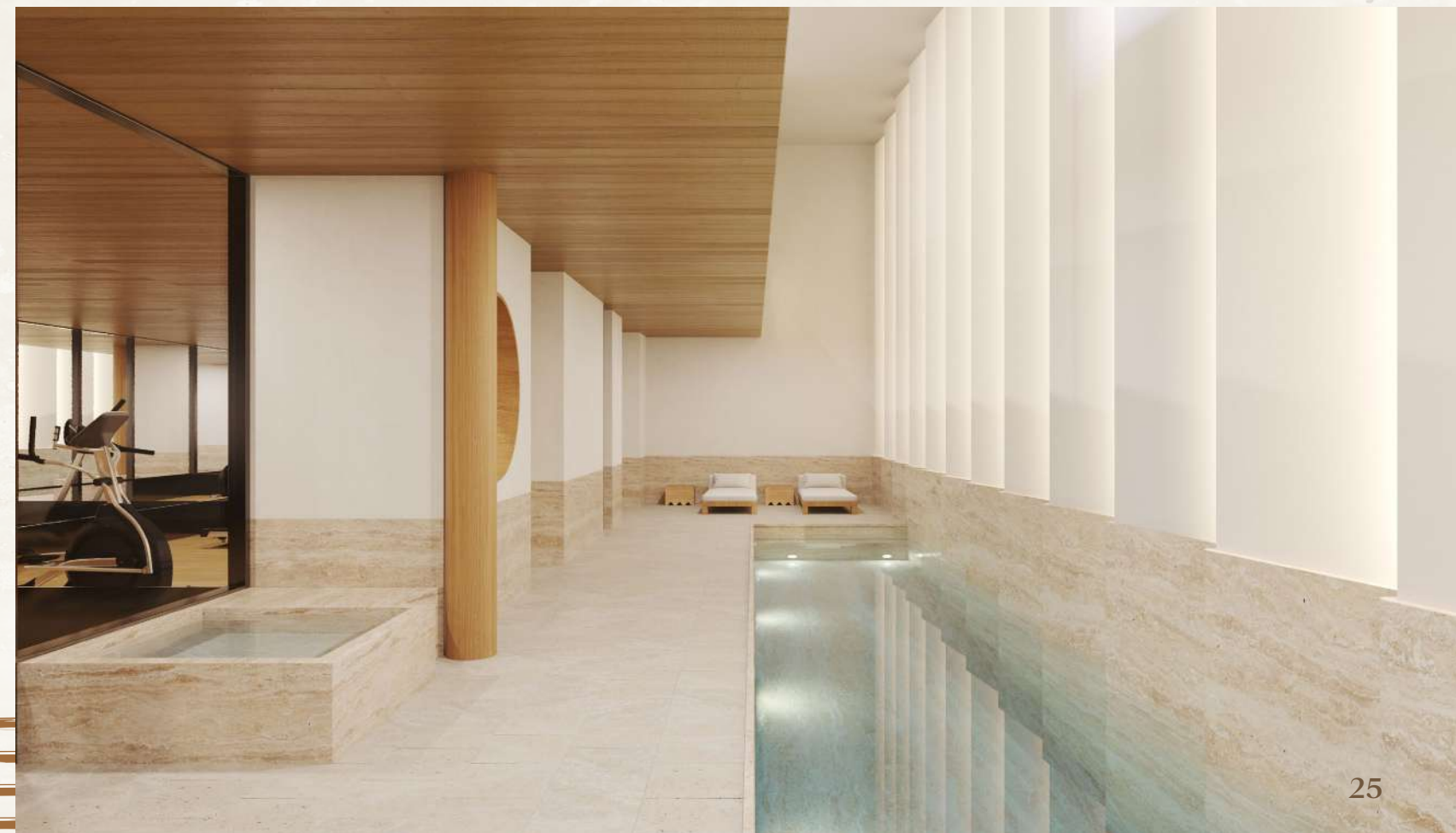
Where mental and physical fortitude meet. The pool area is replete with hot and cold plunge pools allowing you to stress-test your system and build resiliency. Relax, detox, and soothe sore muscles while improving skin health, increasing circulation, and giving your metabolism a boost.

■ Steam/Sauna

Encompassing a traditional Swedish sauna large enough for three people and a steam room, the steam/sauna area promises relaxation or post-workout recovery. The space flows into a central lounge for quiet time and connects to the spa.

■ Spa & Changing Room

Experience five-star treatments without leaving your private sanctuary. Equipped with two tables for massage and facials, the spa area also houses a changing facility alongside dual basins.

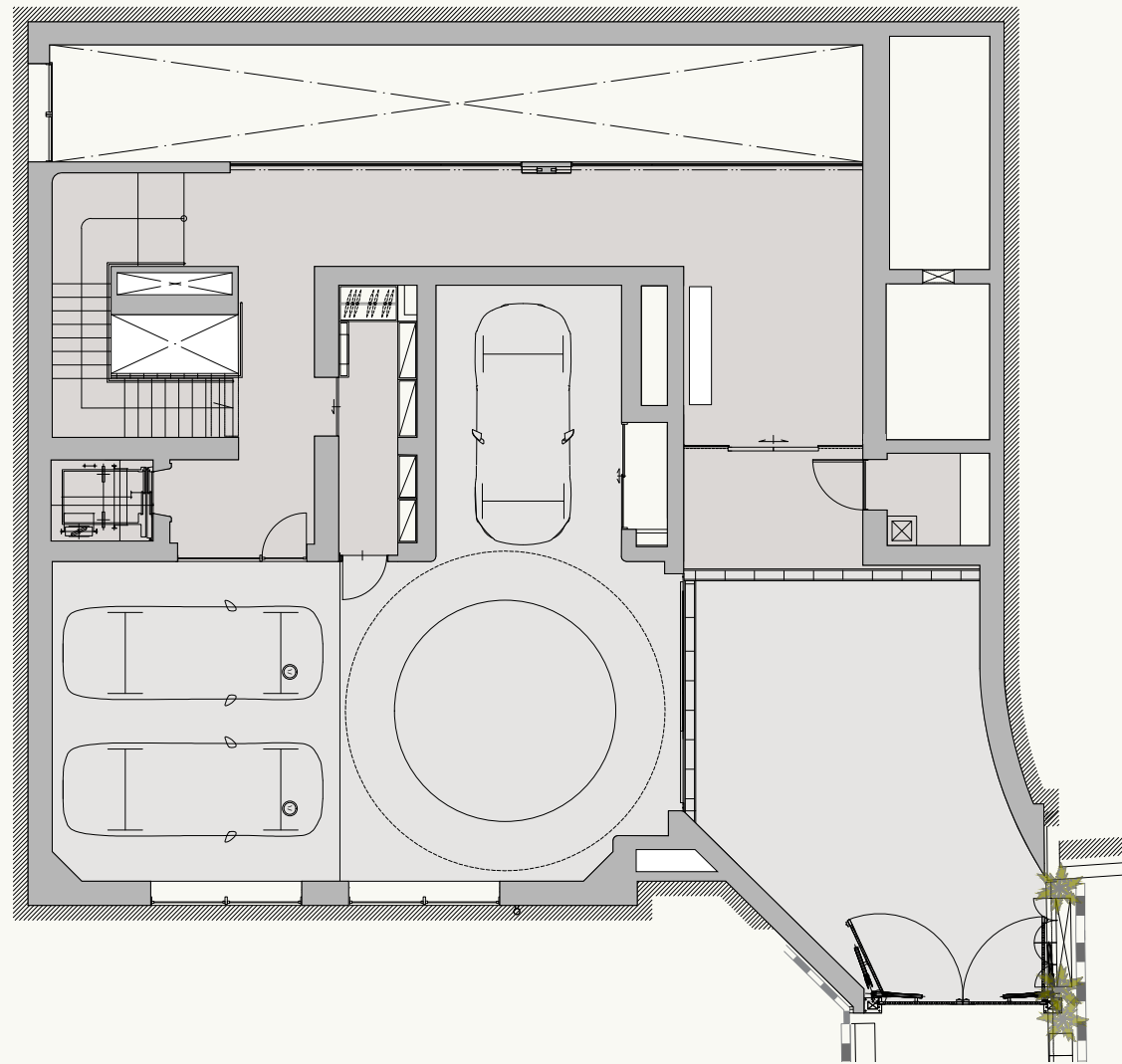


B1

Enter Sheer Excellence

Close the door to the world, and enter a place of solitude daily. Exquisitely designed to filter natural light through the glass skylight, playful contrasts of light and shadow grounds the entrance experience.

A vast garage space is a shelter for automotive enthusiasts while the golf simulator will help you hone your game.



■ Three-Car Garage

Secured parking for up to three cars is available in the garage, which is also outfitted with a turntable to assist with parking. A gridded exterior shutter closes to create a feature wall reminiscent of a traditional Shoji screen.

■ Entrance Lobby with Skylight

Every homecoming to this unique residence is a delight thanks to the exquisitely designed foyer replete with dappled skylight that casts wave-like patterns on the travertine floor.

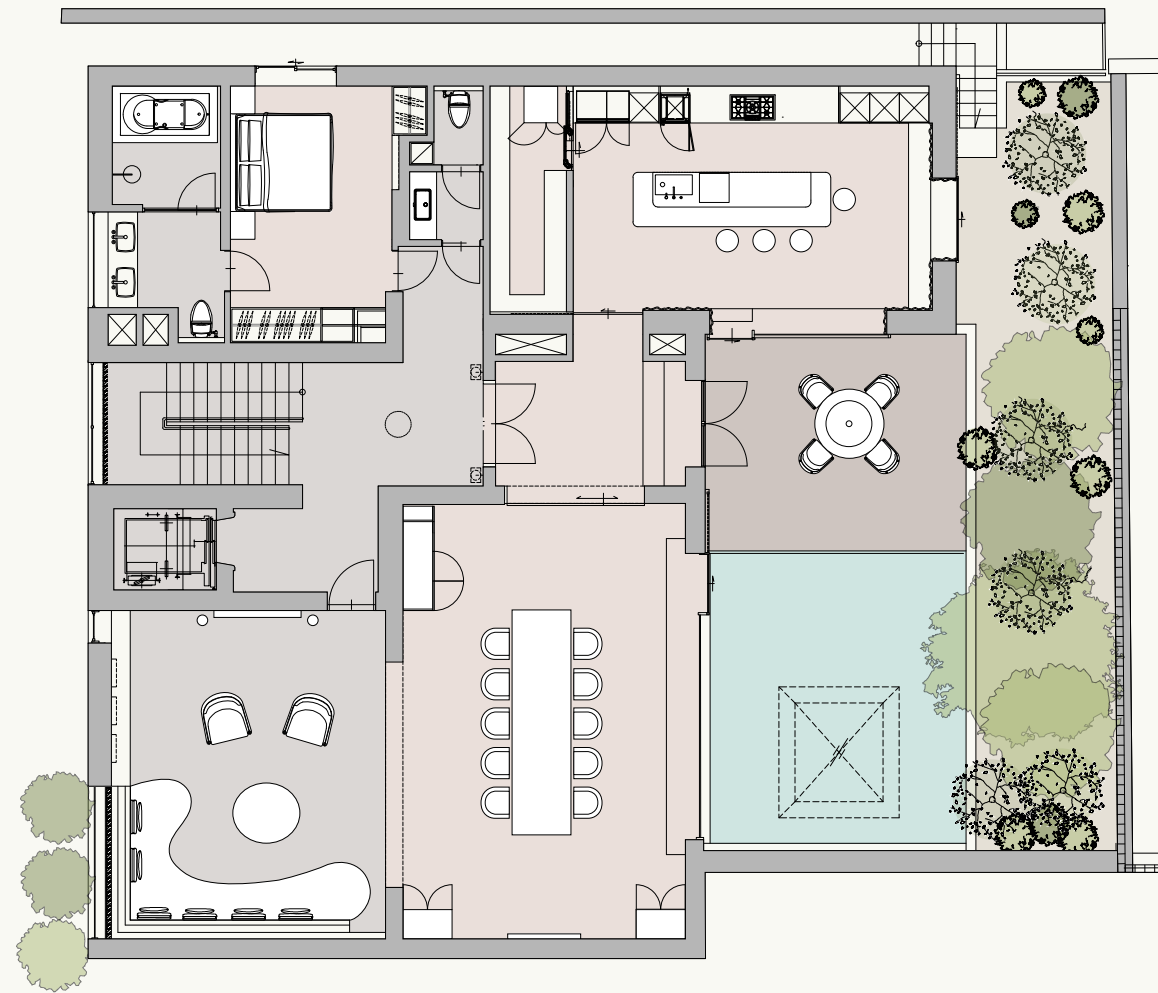
To the right, stepped columns were inspired by Japanese pagodas and the travertine flooring extends up the wall with a palatial effect.

First Floor

The Haven of the Home

An exercise in refined Japanese minimalism, the first floor binds the home with living spaces imbued with calm harmony. Carefully manipulated

materials fuse with seamless fluidity from formal living to dining areas and into the designer kitchen that extends to the outdoors.



Formal Living

Gather loved ones in the formal living room where repeated curves and oak wood create a place of calm. Wood-lined walls reflect traditional Japanese houses and framed views of the exquisite garden cleverly resemble a landscape painting.

Interconnected doors extend the space into the formal living and dining room to enhance the sense of togetherness, or closed for when private spaces are preferred. Bespoke rugs across both the formal living and dining areas feature a wave pattern in a nod to the water element in a traditional Japanese rock garden.



Formal Dining

At almost 100 sqm, both intimate family dinners and elaborate events can be hosted in the formal living and dining room. Overlooking the basin pond and encompassing garden, light filled lunches make way for atmospheric evenings here.

Travertine lines the floors and meets oversized doors crafted from glass and steel that are

reminiscent of gridded Shoji screens. Inspired by the Japanese concept of tokonoma, where items are displayed for artistic appreciation, a pair of flower wall bases flank each door. Anchoring the space is a sprawling hardwood table that speaks to the ever-changing vista.



■ Front Room

Acting as a conduit between the kitchen and the formal living and dining room, the front room also flows from the entrance into the al-fresco dining area.

■ Outside Dining

The enclosed al-fresco dining area allows for meals to be taken in nature in the tranquil garden setting. Connected to both the front room and the kitchen, guests can easily be received as food flows seamlessly to the table. Nearby water elements heighten feelings of relaxation.

■ Japanese Garden

Traditionally, three elements have been incorporated to create the zen of a Japanese garden: deciduous plants, water, and stone. Maple Trees reflect the changing seasons through their leaves and the water basin represents a life-giving force. The stone that surrounds the space rounds out the trio with a grounding effect that symbolises permanence. Shinrin-Yoku, or forest bathing, can be a daily ritual amid the indigenous plantings here.

■ Water feature, with skylight built in, into entrance lobby, car park driveway

■ Open Kitchen and Bar Counter

Executed in oak wood to add cohesion to the flow of the home, the open kitchen showcases expert craftsmanship in a minimalist fashion. Bathed in natural light from the adjoining al-fresco dining area, elegant curves on the island soften the space as travertine lines the floors.

Sleek appliances from Gaggenau and Miele are cocooned by geometric wooden panelling that mirrors the connecting glass doors.

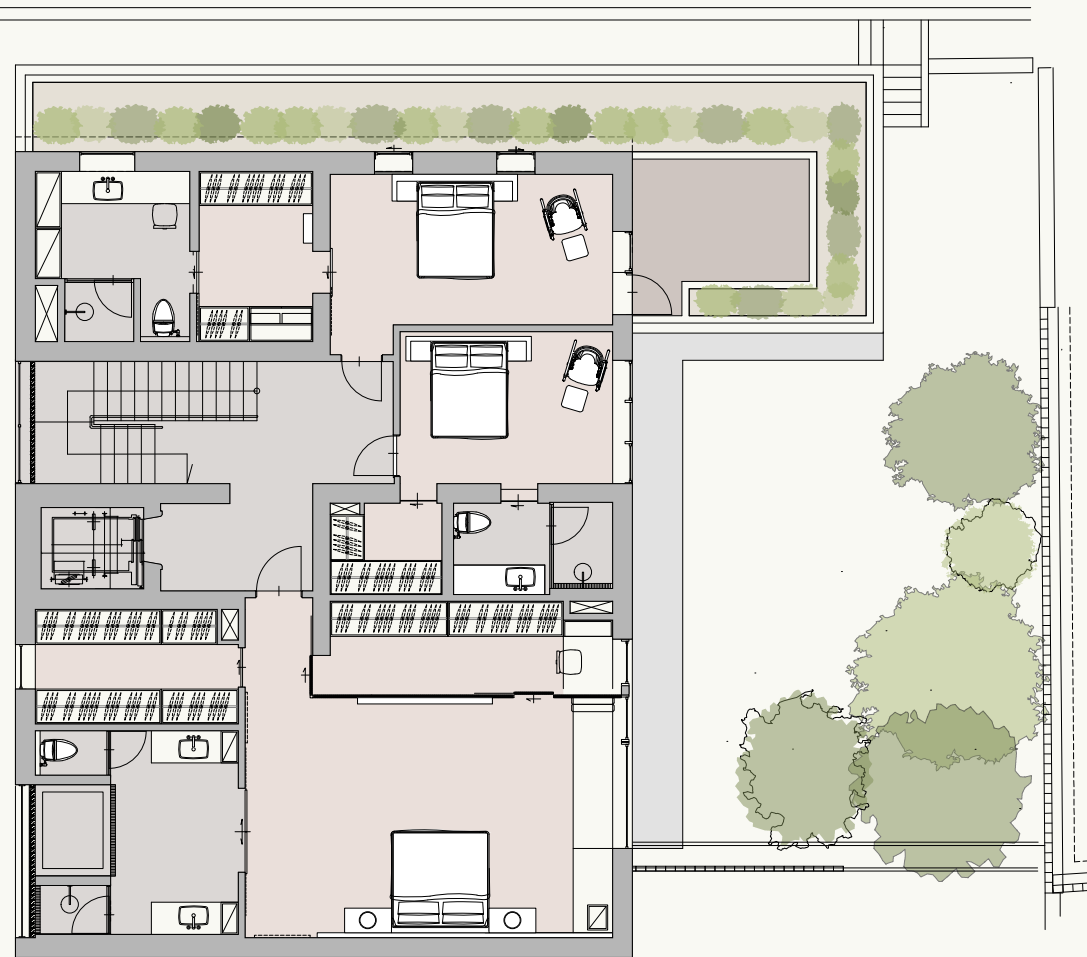
■ Staircase Connecting all Floors & Lift

Carefully linking all floors of this pristine property is a marble stair that weaves gently.

Second Floor

Rejuvenate and Revive

Retire to a level crafted with unostentatious spaces to invite serene slumber or complete revitalisation. Playing host to the master bedroom with en-suite and two bedrooms, extensive balconies cocoon the second floor.



■ Master Bedroom

The distinctive master bedroom spans over 43 sqm and is replete with walk-in wardrobe, en-suite bathroom, and an expansive balcony. Take in the views of the flora and fauna that envelops the property through the oversized windows, or luxuriate in the traditional Hinoki wooden bathtub.

■ Guest Bedroom One

The streamlined and fluid aesthetic of the home extends into the first expansive bedroom. Over almost 21 sqm, restful repose beckons, complete with walk-in wardrobe and en-suite. From the adjoining balcony, early morning and late night vistas proffer daily grounding experiences.

■ Guest Bedroom Two

Embracing 15 sqm, the second bedroom houses a luxurious walk-in wardrobe and exquisitely appointed bathroom. Floor-to-ceiling windows bring the outdoors in for moments of connectivity to nature.

■ Bathroom

A mood of five-star rejuvenation is evoked from the exuberantly-sized yet modestly realised bathroom.



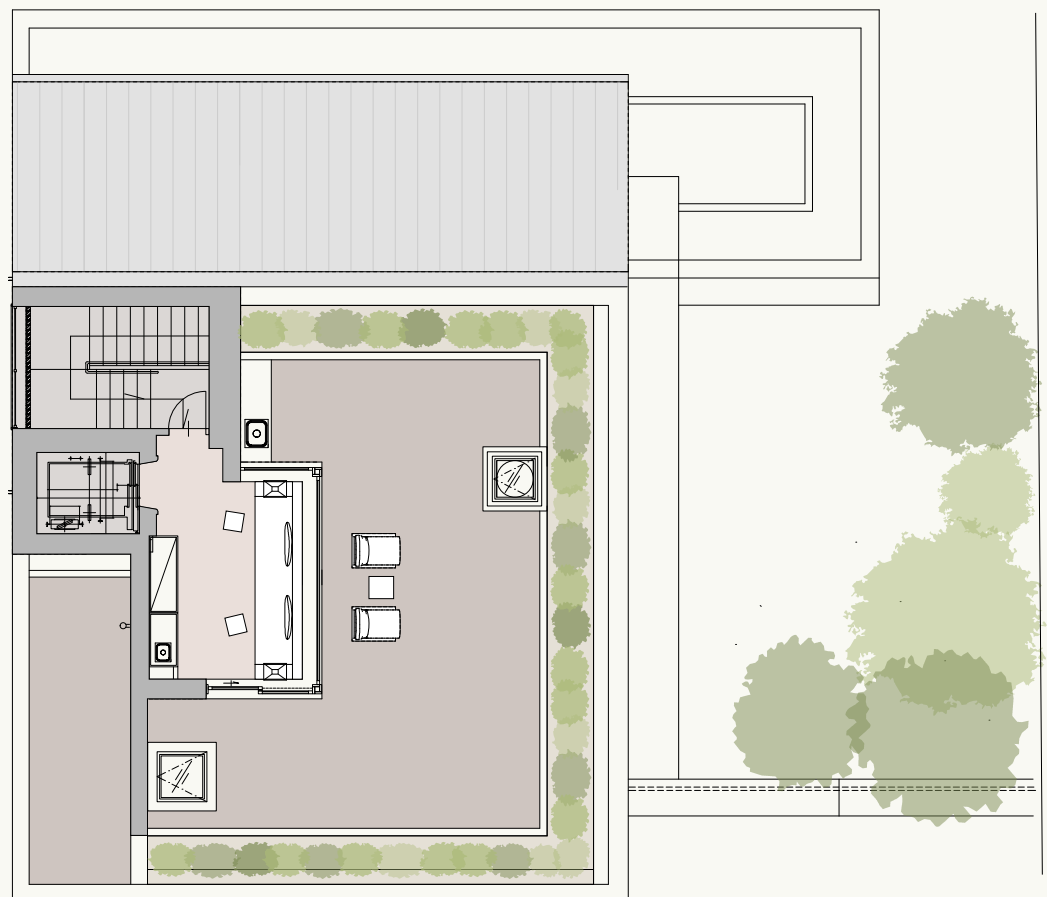


Rooftop

The Crafted Apex

Panoramic views of the contemporary gardens are afforded from the harmonious rooftop- measuring almost 100 sqm, where indoor and outdoor living

blends seamlessly. The summit aspect continues the sophisticated and nuanced design of the home with an awe-inspiring sense of balance.



■ Sitting Area with Gardens

Nested on the highest level, this inner sanctum draws light through expansive windows that frame a delicately manicured box garden for precious moments in time. A transitional space could house a library, a study, or an additional sitting room. Gridded flooring mirrors the horizontal and vertical lines across the home in a contemporary fashion.

■ Outdoor Terrace with Pergola

The private outdoor terrace is a continuation of the tranquil mood created across the property. A striking pergola accents the extended entertaining space and offers shade for periods of relaxation.

■ Loungers and Skylight into Bottom Floor

Furnished with contemporary loungers, space and time halt under the cover of the awning. Cocoon with a novel as the sensory effect of the surrounding garden comes to life.

About Us

With locations in Minami Azabu and Yoyogi Uehara, each location houses its own unique features and storytelling. All Fuin properties share the same common vision of crafting the most exceptional living spaces for the most discerning clientele.

Driven by intentional design and craftsmanship, Fuin strives to create exquisitely beautiful spaces that still feel natural to the people living inside, whilst simultaneously inspiring the cultivation of higher humanistic ideals. As a result, Fuin is redefining modern Japanese luxury.

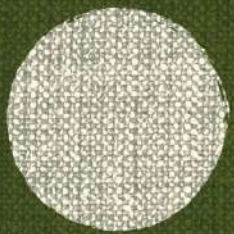


“The spaces around us have a more profound impact on the way we feel and think about ourselves than we could possibly imagine. Once you realise this, you will never take any detail for granted again.”

- Luke Fehon, Chairman

Inquiries: sales@fuinholdings.com
www.2202yoyogiuehara.com





 **u i n**