

# **Sustainable Water Use in the United States**



Oceans

Glacial Ice

Precipitation

Cooling

Swamps

Agriculture

Drinking Water

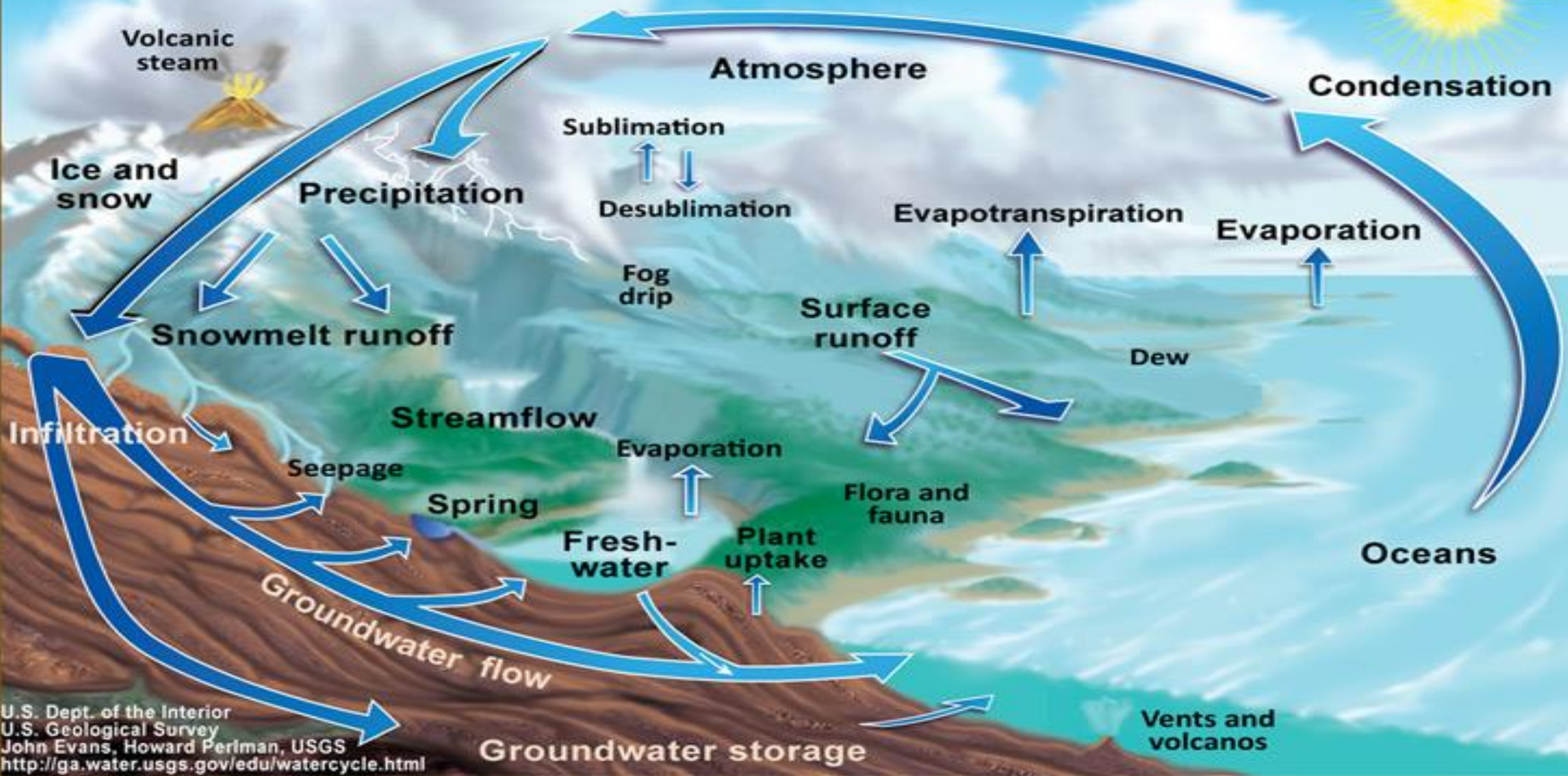
Recreation

## HOW WATER IS USED



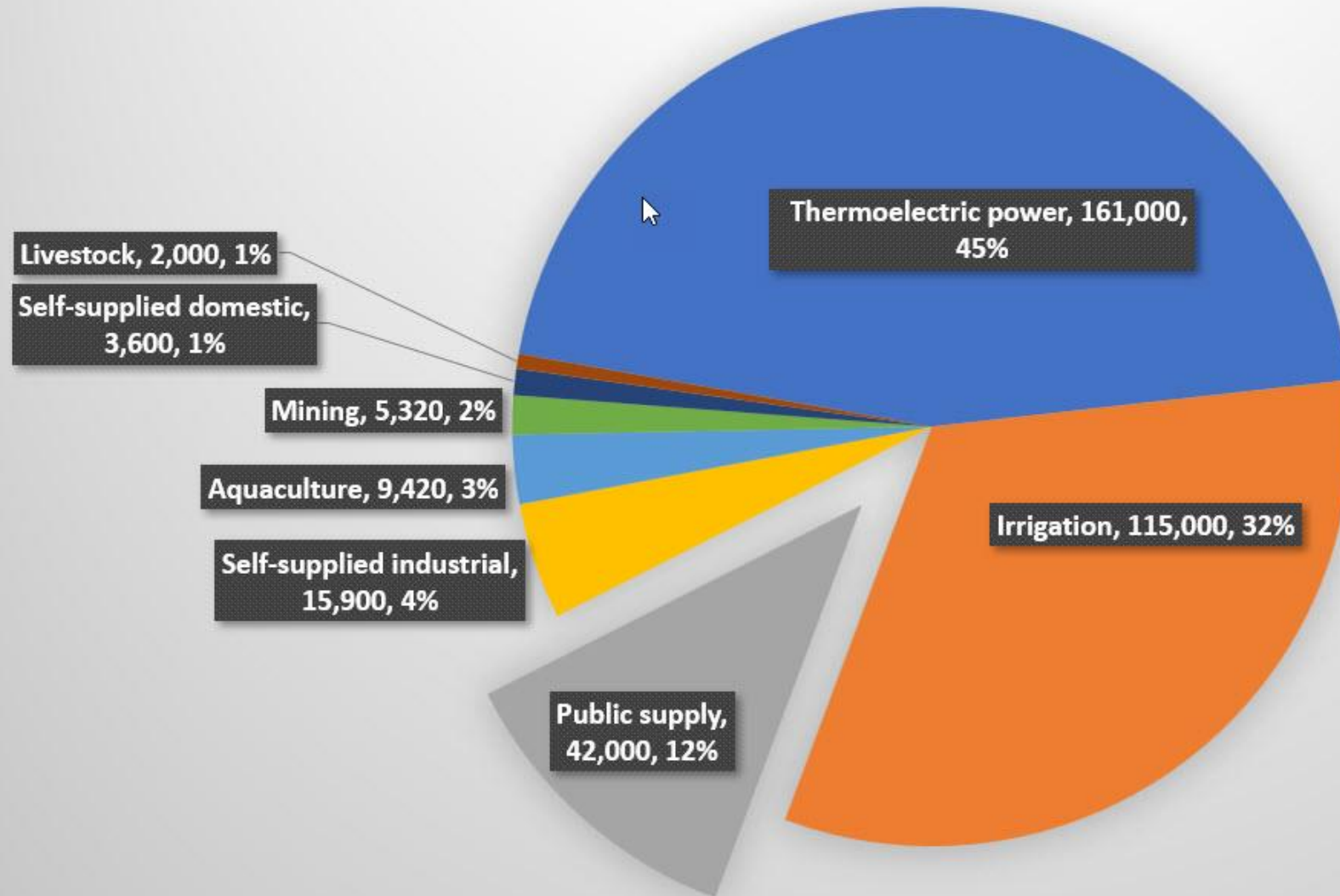


# The Water Cycle



# Water Use in the U.S.

2010 Withdrawals by Category, in Million Gallons per Day

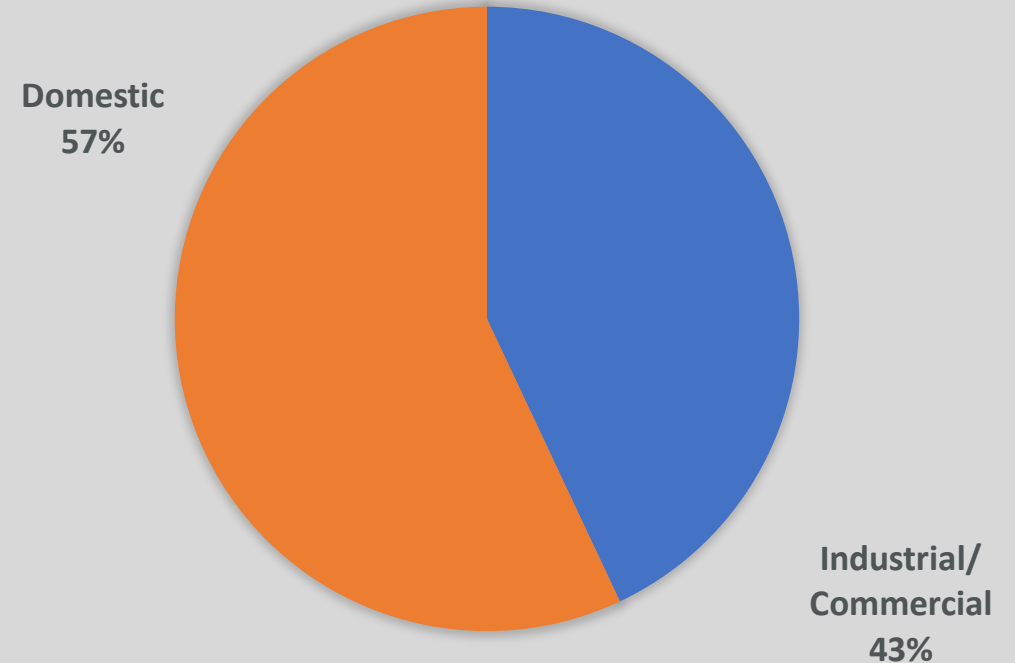


# Public Water Supplies

WATER SOURCES



WATER USE



“Water withdrawn by public and private suppliers that provide water to at least 25 people or have a minimum of 15 connections”



# Public Supply Uses

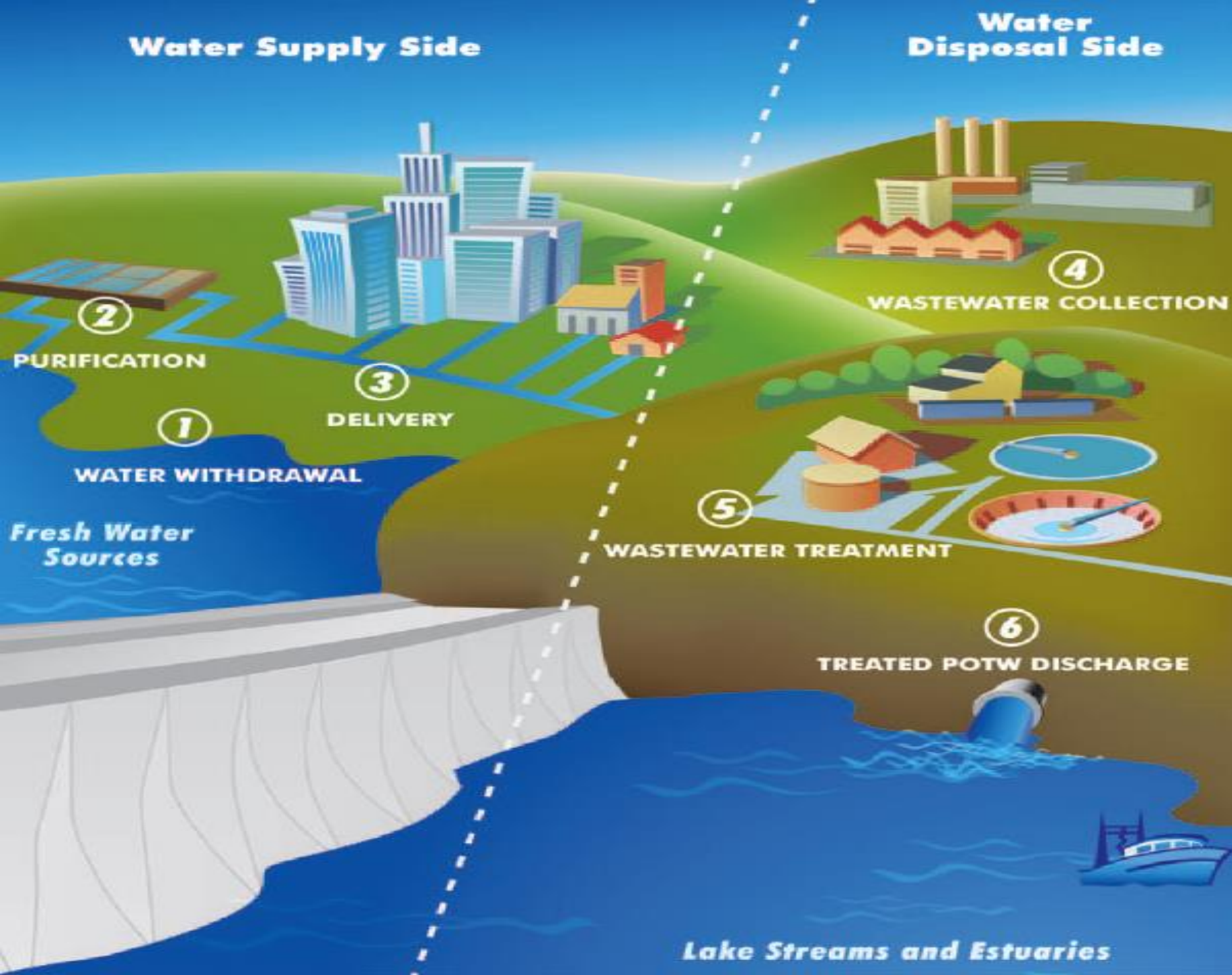
Indoor  
Residential

Outdoor  
Residential

Industrial

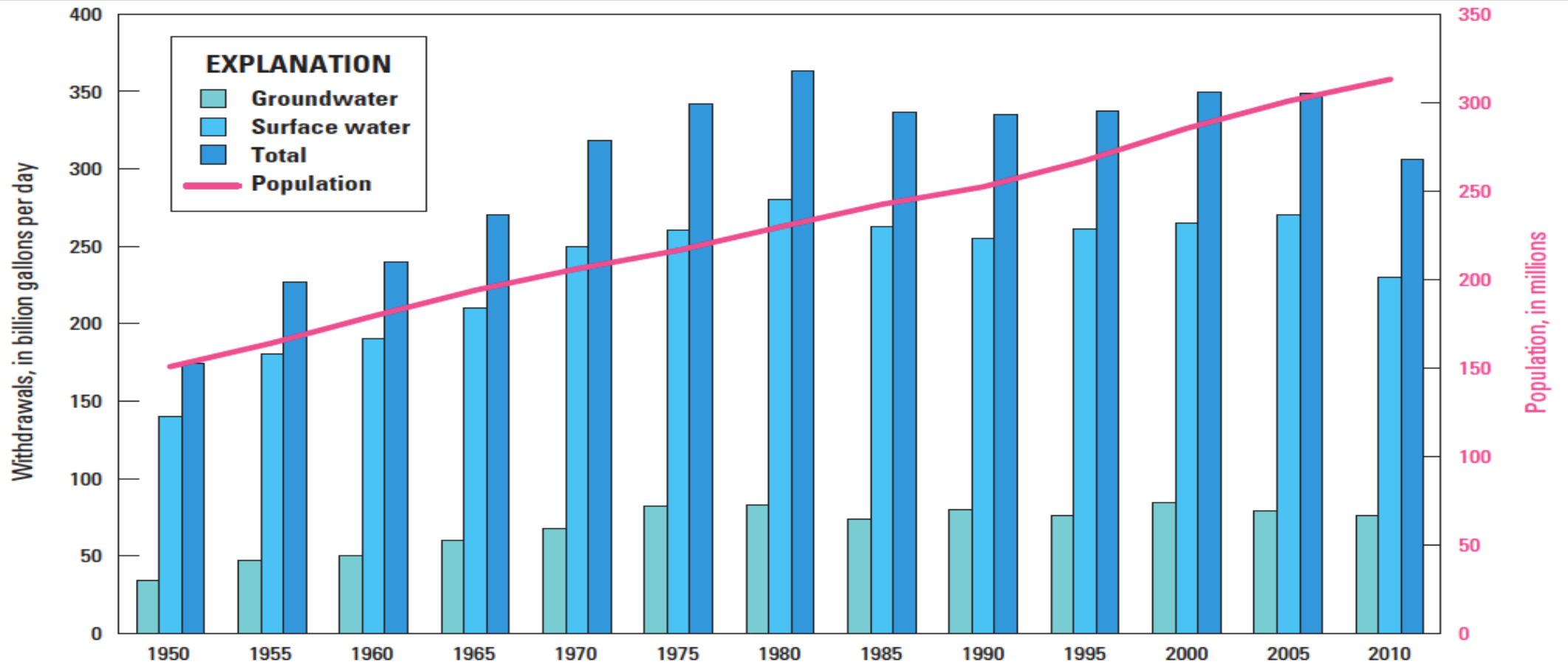
Commercial





# Urban Water Cycle

# Trends in Water Use



**Figure 13.** Trends in population and freshwater withdrawals by source, 1950–2010.



# Water Use Trends

Will total water withdrawals for 2015 show decrease from 2010?

Will public-supply water withdrawals for 2015 show decrease from 2010?



This completes the presentation.  
Thank you for watching!

