

SCANDINAVIA HOUSE

**BI-ANNUAL REPORT—
2015-2017**



AMERICAN-
SCANDINAVIAN
FOUNDATION



SCANDINAVIA
HOUSE



AMERICAN-SCANDINAVIAN FOUNDATION BI-ANNUAL REPORT—

7-1-2015 TO 6-30-2017

The American-Scandinavian Foundation (ASF) serves as a vital educational and cultural link between the United States and the five Nordic countries: Denmark, Finland, Iceland, Norway, and Sweden. A publicly supported nonprofit organization, the Foundation fosters cultural understanding, provides a forum for the exchange of ideas, and sustains an extensive program of fellowships, grants, internships/training, publishing, and cultural events. Over 30,000 Scandinavians and Americans have participated in its exchange programs over the last century.

In October 2000, ASF inaugurated its headquarters, Scandinavia House: The Nordic Center in America, where it presents a broad range of public programs furthering its mission to reinforce the strong relationships between the United States and the Nordic nations, honoring their shared values and appreciating their differences.

PATRONS—2015-17

H.M. Queen Margrethe II of Denmark
H.E. Sauli Niinistö, President of Finland
H.E. Guðni Th. Jóhannesson, President of Iceland
H.M. King Harald V of Norway
H.M. King Carl XVI Gustaf of Sweden

HONORARY TRUSTEES—2015-17

H.R.H. Princess Benedikte of Denmark
H.E. Martti Ahtisaari, President of Finland, 1994-2000
H.E. Vigdís Finnbogadóttir, President of Iceland, 1980-1996
H.H. Princess Märtha Louise of Norway
H.R.H. Crown Princess Victoria of Sweden

OFFICERS—2015-17

Steven B. Peri, Chairman
Bente Svensen Frantz, Deputy Chairman
Edward P. Gallagher, President
Edward E. Elson, Vice Chairman for Denmark
Aili Flint, Vice Chairman for Finland
Kristjan T. Ragnarsson, MD, Vice Chairman for Iceland
Giacomo Landi, Vice Chairman for Norway
Monika Heimbold, Vice Chairman for Sweden
Linda Nordberg, Vice Chairman for the United States
Bård E. Bunaes, Treasurer
Lynn Carter, Senior Advisor & Secretary to the Board

A NOTE FROM THE PRESIDENT— EDWARD P. GALLAGHER

The following pages provide an overview of the programs, activities and finances of the American-Scandinavian Foundation (ASF) during the Fiscal Years 2016 and 2017 (July 1, 2015 – June 30, 2017).

Founded over 100 years ago to increase international understanding and cooperation through educational and cultural exchange, ASF has continued to pursue this mission with renewed vigor over the past two years.

During Fiscal Years 2016 and 2017, more than 115 fellowships, grants, and special awards were presented to scientists, scholars, artists, and students enabling them to advance their education, research, and creative efforts abroad. Forty public project grants were also made in support of artistic, cultural, and educational programs, as well as four artist residency grants, four translation prizes and a visiting lectureship.

In addition, ASF's Internship & Training Program offered over 300 young professionals and students the opportunity to receive invaluable practical experience while living and working in another country.

Scandinavia House welcomed nearly 250,000 visitors over the past two years. More than 200 individual programs were offered, including concerts, film screenings, symposia, lectures and children's events. Several exciting exhibitions were presented, including: *Painting Tranquility: Masterworks By Vilhelm Hammershøi From SMK – The National Gallery Of Denmark*, which featured Hammershøi's 19th- and 20th-century masterpieces; *Prize Prints: The Queen Sonja Print Award*, featuring recent works by prizewinners Tiina Kivinen (Finland) and Svend-Allan Sorensen (Denmark); *Independent Visions: Helene Schjerfbeck And Her Contemporaries From The Collection Of Ateneum, Finnish National Gallery* was presented in conjunction with the Finnish Centennial, and it featured an exceptional grouping of 19th- and 20th-century works by four Finnish artists on view for the first time in the US.

ASF has also been dynamically engaged in furthering national and international outreach over the past two years. A newly designed and expanded website was introduced in 2016 and has been visited by tens of thousands of users. At the same time, the *Scandinavian Review*, our highly praised periodical, has been perused by more than 8,000 readers each issue.

It has been a memorable two years, marked by diverse programming and notable accomplishments, none of which would have been possible without the inspired leadership of the ASF Trustees, the generous support of our many donors, and the dedicated efforts of our staff.

I am deeply grateful to all!

Sincerely,



ASF BOARD OF TRUSTEES

AS OF 6-30-2017

EXECUTIVE TRUSTEES

Charles B. Anderson
Senior Vice President,
SKULD North America, Inc.

Gudrun Aspelund
M.D. /Chief of Pediatric
Surgery, Maria Fareri
Children's Hospital,
Westchester Medical
Center

Charles K. Barbo
Partner, Catalyst
Storage Partners LLC

Victor B. Borge
Film Director

Anders C.H. Brag
President, GARB
Holdings LLC

Pontus Bonnier

Bård E. Bunaes
President and CEO (ret.),
GLOBAL Reinsurance
Company of America;
Chairman of the Board,
American-Scandinavian
Foundation, 2006–2009

W. Grant Callow
Attorney, Law Office of
William Grant Callow;
Honorary Danish Consul
for Alaska

David E.R. Dangoor
Innoventive Partners,
LLC

Daphne L. Davidson
Chairman, Scandinavian
Seminar; Attorney
(private practice)

Michelle V. Edelman
Founder and CEO,
Traffic Creative
Management

Carl Gustaf Ehrnrooth
Partner, Bentmind Ltd.

Sven Anders Ekernäs
Chairman & CEO,
Hillswick Asset
Management

Inger McCabe Elliott
President, IME/LTD

Edward E. Elson
U.S. Ambassador to
Denmark, 1993–1998

Michael A. Feirstein
Former Vice President
and Corporate Counsel,
Prudential Financial, Inc.

Aili Flint
Head of the Finnish
Program (ret.), Columbia
University

Bente Svensen Frantz
Deputy Chairman of
the Board, American-
Scandinavian
Foundation, 2015–
Present; 2012–Present;
Chairman of the Board,
American-Scandinavian
Foundation, 2012–2015

Edward P. Gallagher
President, American-
Scandinavian-
Foundation, 1996–
Present

**Inger Gundersen
Ginsberg**

Magnus Gustafsson
President, Atlantika, Inc.

Lisa Halpern

Joanna Heimbold

Monika Heimbold, MSW
President, Heimbold
Foundation

Siggi Hilmarsson
Founder and CEO, siggi's
dairy

Anders Iversen
Managing Director,
Danske Markets

Trond S. Jensen
President, Sigurd Jensen
& Co.; Owner, Chestnut
Hill Farms; Honorary
Consul General for
Norway, Florida

Lena Biörck Kaplan
President, American-
Scandinavian Foundation
1989–1996

Christopher G. Kelly
Partner, Holland & Knight

Kristina Kittilsen
Former Director, US
Institutional Equity
Sales, Credit Suisse
Securities LLC

Eugene V. Kokot, Esq.
Partner, Katsky Korins
LLP

Giacomo Landi
Executive Vice President
and General Manager,
DNB Bank

Christina Lang Assael
Vice Chairman, The
Assael Foundation

Hon. John L. Loeb, Jr.
Chairman, John L. Loeb,
Jr. Associates, Inc. U.S.;
Ambassador to Denmark,
1981–1983

Asbjørn R. Lunde

Bertil P. Lundqvist
Executive VP and
General Counsel, C.V.
Starr & Co. and Starr
Insurance Holdings

Helen W. Marx
Honorary Consul for
Finland, New Jersey

Michael S. Mathews
Managing Director,
Westgate Capital Co.

Ragnar Meyer-Knutsen
Founder, Sealift Inc.

Linda Nordberg
Trustee, The Katonah
Museum of Art

Ólafur J. Ólafsson
Vice Chairman, Time
Warner Digital Media

Siggi Olafsson
Former President &
CEO, Global Generic
Medicines Group, Teva
Pharmaceutical

Richard E. Oldenburg
Honorary Chairman
(ret.), Sotheby's
North America; Co-
Chairman of the Board,
American-Scandinavian
Foundation, 2009–2012

Lyndon L. Olson, Jr.
Chair, Hill + Knowlton
Strategies, Europe and
USA; U.S. Ambassador to
Sweden, 1997–2001

Barbro Osher
President, The Barbro
Osher Pro Suecia
Foundation; Chairman,
Bernard Osher
Foundation; Honorary
Consul General of
Sweden, San Francisco

Steven B. Peri
Attorney, Peri & Stewart;
Chairman of the Board,
American-Scandinavian
Foundation, 2015–
Present

Kristján T. Ragnarsson
Lucy G. Moses Professor
and Chairman (ret.),
Department of
Rehabilitation Medicine,
Mount Sinai Medical
Center; Chairman of
the Board, American-
Scandinavian
Foundation, 2000–2003

Lennard K. Rambusch
Partner (ret.), Holland &
Knight LLP

Bernt Reitan
Executive Vice
President, Alcoa (ret.);
Group President, Alcoa
Primary Products; Co-
Chairman of the Board,
American-Scandinavian
Foundation, 2009–2012

Henrik Roos
Private Equity Investor &
Board Member

Marcus Siezing
Director of Investments,
Dillon Trust Company

Tómas Már Sigurdsson
Chief Operating Officer,
Alcoa Global Primary
Products, New York, NY

Henrik Steffensen
Executive Vice President,
Nordea Bank, New York
Branch

Vibeke Steineger
Tour Manger / Travel
Consultant, Steineger &
Krogh, TIDE Travel

James M. Stewart

Lise Stolt-Nielsen

Bente Strong
Brown Advisory

Inger M. Tallaksen
IMT Consulting

Thor Thors, Jr.
Vice President (ret.),
United States Trust
Company of New York

Agnes Ahlander Turner
Literary Scout, Marie B.
Campbell Associates

Liv Ullmann
Actor/Director

Arthur Zeckendorf
Co-Chairman, Brown
Harris Stevens LLC
Group

ADVISORY TRUSTEES

Roger E. Anderson
Managing Partner,
Hamilton Capital
Partners

Karl G. Andrén
Chairman and CEO (ret.),
New York Cruise Lines, Inc.

Barbara Barrett
President & CEO, Triple
Creek Ranch; U.S.
Ambassador to Finland,
2008–2009

Patricia G. Berman
Professor of Art,
Wellesley College;
Professor II, University of
Oslo

Stuart A. Bernstein
Chairman, Bernstein
Companies; U.S.
Ambassador to Denmark,
2001–2005

Charles E. Cobb, Jr.
Chairman and CEO,
Cobb Partners; U.S.
Ambassador to Iceland,
1989–1992

Lars W. Colliander
Berner Brothers, Inc

Alpo Franssila Crane
Private Investor

Albert R. Dowden
President and CEO
(ret.), Volvo Group North
America, Inc.; Chairman,
American-Scandinavian
Foundation, 1995–2000

Craig Dykers
Co-Founder, Snøhetta

Charles S. Haight, Jr.
U.S. District Judge
for the District of
Connecticut; Chairman,
American-Scandinavian
Foundation, 1971–1976

Nils Hasselmo
President Emeritus,
University of Minnesota;
President (ret.), The
Association of American
Universities

Kaarina Koskenalusta
Partner, Global Initiatives
Partners LLC

Peter F. Krogh
Dean Emeritus, Edmund
A. Walsh School
of Foreign Service,
Georgetown University

Øivind Lorentzen, Jr.
Chairman of the Board,
American-Scandinavian
Foundation, 1988–1991

Øivind Lorentzen, III
CEO, Treehouse Partners
Corp.

Rose-Marie Oster
Professor of Germanic
Studies, University of
Maryland

Hilppa A.K. Roby
Former Conference
Manager, United Nations

Christian R. Sonne
General Partner, Tuxedo
Park Associates;
Chairman of the Board,
American-Scandinavian
Foundation, 2003–2006

Robert Storr
Former Dean, Yale School
of Art

Helgi Tómasson
Artistic Director, San
Francisco Ballet

Thórunn Wathne

Torsten N. Wiesel
President Emeritus, The
Rockefeller University

Michael M. Wood
Chairman, Redwood
Investments LLC; U.S.
Ambassador to Sweden,
2006–2009

OVERSEAS ADVISORY TRUSTEES

Magnús Bjarnason
Managing Director, Kvika
Bank, ICELAND

Rune Bjerke
President and CEO, DNB
NOR AS, NORWAY

Pontus Bonnier
SWEDEN

Klaus Thomas Cawén
Executive Vice President,
KONE Corporation,
FINLAND

Orri Hauksson
CEO, Síminn hf,
ICELAND

Jens P. Heyerdahl
Former Group CEO, Orkla
ASA, NORWAY

Jonas Kleberg
CEO, Soya Group, SWEDEN

Jorma Ollila
Chairman, Outokumpu,
FINLAND

Fritz Schur
Chamberlain, Consul
General, DENMARK

Friðrik Sophusson
Chairman, Íslandsbanki;
Former President & CEO,
Landsvirkjun; Former
Minister of Finance,
ICELAND

Nadia Stolt-Nielsen
NORWAY

Ane Mærsk Mc-Kinney Uggla
Vice Chairman of
the Board, A.P. Møller
– Mærsk A/S; Vice
Chairman, A.P. Møller
and Chastine Mc-Kinney
Møller Foundation,
DENMARK

Björn Wahlroos
President and CEO,
Sampo plc., FINLAND

Jacob Wallenberg
Chairman, Investor AB,
SWEDEN

**Henrik Wedell-
Wedellsborg**
Partner, Bruun & Hjejle;
Chamberlain, DENMARK

**Arne Alexander
Wilhelmsen**
NORWAY

FELLOWSHIPS & GRANTS



—CLARE BENSON, 2015-16 FELLOW TO SWEDEN—IMAGE COURTESY OF CLARE BENSON

For more than 100 years the ASF Fellowships & Grants Program has awarded funds to Americans and Scandinavians engaged in study, research, or creative arts projects. The first ASF grants were made to three philologists in 1912 as one of the earliest programs of the newly established Foundation's mission to promote educational and cultural exchange between the U.S. and the Nordic countries. Since then, more than 7,500 scholars, researchers, policymakers, artists, and professionals have received support for their work in areas now as far-ranging as medicine and the sciences, economics and political history, the arts, and literature.

More than 115 new Scandinavian and American Fellows received financial support from ASF for study and research projects abroad throughout the two-year period of this report. During the 2015–16 competition \$608,100 was awarded to fifty-six Fellows from the U.S. and the Nordic countries; \$610,080 was awarded to sixty Fellows in the 2016–17 competition. Fellowships and grants range between \$5,000 and \$23,000 and are awarded to graduate students, post-graduate scholars, professionals, and artists pursuing independent projects.

ASF also offers funding to American colleges and universities to support visiting lectureships by distinguished scholars from Norway or Sweden for a semester, along with a travel stipend so that the lecturer can speak at other institutions in the U.S. The University of Washington was selected to host a team of specialists in multiculturalism in the fall of 2014.

Outstanding English translations of poetry, fiction, drama, or literary prose originally written in a Nordic language are recognized each year by ASF's Nadia Christensen Translation Prize and Leif and Inger Sjöberg Translation Prize.

GRANTS ADMINISTERED BY ASF

ASF has over forty funds that it holds on a long-term basis, using the income to fund fellowships and grants, including:

Mathilde Aas Memorial Fund • Carl G. and Rikke Fredriksen Barth Memorial Fund • John G. Bergquist Fellowship in Chemistry Fund • Bernadotte Fund • Sven and Ingrid Bernhard Fund • Crown Princess Märtha Friendship Fund • The Eugene and Siri Delafield Scholarship Fund • Jane and Aatos Erkkö Fund • Finnish Fund • Former Fellows Fund • Icelandic Crafts Fund • Carl Olaf, Marie, and Katherine Elizabeth Johnson Fellowship Fund • Henrik Kauffmann Fund • King Haakon VII Birthday Fund • King Olav V 70th Birthday Fund • Helen Lee and Emil Lassen Fellowship Fund • Hans Knudsen Lorentzen Memorial Fund • Rev. Lars R. Lund Fund for Nordic Literature • Martha and Jack McFall Fund • The Peter and Birgit Faber Morse Fund • New Sweden '88 Cultural and Educational Fund • The Dr. Mary Jane Oestmann Fellowship Fund in the Sciences • Philip W. Pfeifer III Fund • Amanda E. Roleson Fund • Carl Sandburg Fund • Sather Fund • Leif and Inger Sjöberg Fund • Thor and Saimi Soderholm Fund • Carol and Hans Chr. Sonne Fellowship Fund • Sønsteby/Whist Fund • Håkon Björnström Steffanson Scholarship Fund/Sweden America Foundation • Håkon Björnström Steffanson Scholarship Fund/Uppsala University • Stolt-Nielsen Fund for Education • Alice and Corrin Strong Fund • Haakon Styri Fellowship Fund • Selma C. Swanson Fund • Thor Thors Memorial Fund • Thord-Gray Memorial Scholarship Fund • Saara and Björn Wahlroos Fellowship Fund • Marcus and Amalia Wallenberg Memorial Fund • Andrew E. and G. Norman Wigeland Fund • Charles K. Willey Memorial Fund

FELLOWS 2015 - 2016

TO DENMARK

EATMON, TOMAS

FROM—Allegheny College
T0—University of Copenhagen

Post-Doctoral Research, Environmental Studies, Amanda E. Roleson Fund

WHITMIRE, ETHELENE

FROM—University of Wisconsin-Madison
T0—Royal Danish Library, University of Copenhagen.
International School in Helsingør

Post-Doctoral Research, African American Studies, Politiken & BT newspapers. Scan|Design by Inger and Jens Bruun Foundation Grant

IVENÄS, SABINA

FROM—University of Washington
T0—Aarhus University

Doctoral Research, Scandinavian Studies. Amanda E. Roleson Fund

FROM FINLAND

All candidates recommended by the League of Finnish-American Societies (Suomi-Amerikka Yhdistysten Liitto), Helsinki

HÄGGMAN, ANNA

T0—Harvard University

M.A., Technology, Innovation and Education. Finnish Fund

KORPIJÄRVI, ANNA-LEENA

T0—Brown University

Doctoral Research Fellow, American Studies. Finnish Fund

NEVALAINEN, MIKA

T0—University of Oregon

Post-Doctoral, Musculoskeletal radiological research. Saara and Björn Wahlroos Fellowship Fund

SUMÉN, MAURI

T0—New York University

M.F.A., Film Studies. Finnish Fund

UUSITALO, JOHANNA

T0—UCLA

Ph.D. Costume Design. Finnish Fund, Saara and Björn Wahlroos Fellowship Fund, Soderholm Fund

VUOLAJÄRVI, NIINA

T0—Rutgers University

Ph.D. Sociology. Martha and Jack McFall Fund

TO FINLAND

BLIND, JASON

FROM—Indiana University
T0—Hakkari School; University of Tampere, School of Education

Doctoral Research, Sociology. The Jane and Aatos Erkko Fund, Finnish Fund

MORLOCK, SUZANNE

FROM—Wyoming Arts Council

T0—RaumArs Artists-in-Residence Program

Post-Graduate Arts, Visual Arts. The Jane and Aatos Erkko Fund

WOODWARD, AMANDA

FROM—Michigan State University
T0—Tampere University of Applied Sciences

Post-Doctoral Research, Sociology. The Jane and Aatos Erkko Fund

FROM ICELAND

All candidates recommended by the Icelandic-American Society (Íslensk-Ameríska Félagid), Reykjavik

INGIMUNDARSON, HELGI

T0—Columbia University

M.S. Financial Engineering. Charles K. Willey Fund

KETILSDOTTIR, STEINUNN

T0—New York University

M.A. Performance Studies. Charles K. Willey Fund

STEFANSDOTTIR, HERDIS

T0—New York University

M.A. Scoring for Film and Multimedia. Charles K. Willey Fund

EINARSDOTTIR, ASBJÖRG

T0—Stanford University

MSc, Management Science and Engineering. Thor Thors Memorial Fund

MÁSDÓTTIR, ANNA HRUND

T0—California Institute of the Arts

M.F.A. Visual Arts. Thor Thors Memorial Fund

GESTSSON, SKULI

T0—University of Washington

M.A. Music Education. Thor Thors Memorial Fund

TO ICELAND

HUGHES, JENNIFER

FROM—University of Minnesota

Doctoral Research, Cultural Anthropology. Thor Thors Memorial Fund

FROM NORWAY

All candidates recommended by the Norway-America Association (Norge-Amerika Foreningen), Oslo

BLAKER, ØYVIND

T0—University of Massachusetts, Amherst

Ph D. Engineering. Håkon Styri Fund, Stolt-Nielsen Fund for Education

**BRIDGE WALTON,
AGNES****T0—Yale University**

M.A./M.S. Environmental Sciences. Stolt-Nielsen Fund for Education, Håkon Styri Fund

**BRAANAAS,
MERIAM****T0—University of
Southern California**

M.F.A. Film, Andrew E. and G. Norman Wigeland Fund, Norway House Foundation Grant

DAHLUM, ANDREA**T0—UCLA**

L.L.M., Andrew E. and G. Norman Wigeland Fund

GRIMSTAD, AUDUN**T0—School of Visual
Arts, New York**

M.F.A. Design. Andrew E. and G. Norman Wigeland Fund

**GRØNNING,
RAGNHILD****T0—George Washington
University**

M.A. Andrew E. and G. Norman Wigeland Fund

**HABBESTAD, STIG
ROAR LIER****T0—MIT, Sloan School of
Management**

MBA, Exchange Student. DNB Bank ASA Fellowship

**HELLEVIK,
PERNILLE****T0—Columbia University**

MFA, Film. Mathilde Aas Fund, King Håkon VII Fund

INGULFSEN, INGA**T0—New York University**

MA, Directed Study, International Affairs. King Olav V Fund

MALM, OLA RYE**T0—Harvard Business
School**

MBA, Directed Study. DNB Bank ASA Fellowship

**NYQUIST, JON
RASMUS****T0—University of
California, Santa Cruz**

PhD, Directed Study, Cultural Anthropology/Mathilde Aas Fund, Pratt/Johnson Fund, Norway House Foundation Grant

STEINE, IRIS**T0—University of
California, Berkeley**

PhD, Psychology. Norway House Foundation Grant

STØA, HEIDI**T0—Indiana University**

PhD, Literature. Andrew E. and G. Norman Wigeland Fund

**STRØMSTED, ANJA
HØVIK****T0—New York University**

MFA, Directing. Pratt/Johnson Fund, King Håkon VII Fund

WISTER, ANDREA**T0—Palo Alto University**

PhD, Clinical Psychology. Norway House Foundation Grant

**WROLDSEN, SVENN
MARIUS HUSEM****T0—Georgetown
University**

MA, Andrew E. and G. Norman Wigeland Fund

ØSTMO, SIMEN**T0—Arizona State
University**

PhD, Anthropology. Håkon Styri Fund

TO NORWAY**ANDERSON, GAVIN****FROM—Monterey
Institute of International
Studies****T0—Fridtjof Nansen
Institute (FNI), Oslo**

Post-Graduate Research, International Policy. Carol and Hans Christian Sonne Fund, Former Fellows Fund, Scandinavian Seminar

BAUER, GORDON**FROM—Williams College
T0—University of Oslo**

Post-Bachelor Research, Climate Change Policy. Scandinavian Seminar

**BIGELOW,
BENJAMIN****FROM—University of
California, Berkeley
T0—University of Oslo**

Doctoral Research, Scandinavian Languages and Literature. Crown Princess Märtha Friendship Fund

MCKOWEN, KELLY**FROM—Princeton
University
T0—University of Oslo**

Doctoral Research, Anthropology. The Sather Fund, King Olav V Fund

NATVIG, DAVID**FROM—University of
Wisconsin—Madison
T0—University of Oslo**

Doctoral Research, Scandinavian Linguistics. Crown Princess Märtha Friendship Fund, The Sather Fund

NILSEN, CAROLINE**FROM—University of
North Carolina, Chapel
Hill****T0—University of Oslo**

Doctoral Research, European History. Crown Princess Märtha Friendship Fund

**THORPE
BUCHANAN, JASON****FROM—Eastman School
of Music, University of
Rochester****T0—USF Verftet, Bergen**

Doctoral Research, Music Composition,. Crown Princess Märtha Friendship Fund, Carol and Hans Christian Sonne Fund, James L. Howard Grant

FROM SWEDEN

All candidates recommended by the Sweden-America Foundation (Sverige-Amerika Stiftelsen), Stockholm

**ANDERSSON,
BJÖRN OLOV
RICKARD****T0—Colorado State
University**

MS, Aquaculture and Algae Cultivation. Bernadotte Fund, Håkon Björnström Steffanson Scholarship

Fund–Sweden–America Foundation, Dr. Mary Jane Oestmann Fellowship Fund in the Sciences

LARSSON, PER JONATAN SENNAI

T0—Tufts University

MA, Philosophy. Håkon Björnström Steffanson Scholarship Fund–Uppsala University, Marcus and Amalia Wallenberg Fund

NEUMAN, AVIVA

T0—Columbia University

MFA, Film. Håkon Björnström Steffanson Fund–Sweden–America Foundation, Thord-Gray Memorial Fund

TO SWEDEN

AGUILAR, ELLIOT

**FROM—City University of New York
T0—Stockholm University**

Doctoral Research, Evolutionary Biology. Philip W. Pfeifer III Fund

BENSON, CLARE

**FROM—Princeton University
T0—Swedish Institute of Space Physics (IRF)**

Post-Graduate Research, Photography; Sami filmmaker, Hans-Olof Utsi. Thord-Gray Memorial Fund, Selma Swanson Fund, Scandinavian Seminar

HOOK, TOMAS

**FROM—Purdue University
T0—Uppsala University**

Post-Doctoral Research, Fisheries and Ecology. Thord-Gray Memorial

Fund, Former Fellows

LINDQUIST, ARIANA

FROM—Independent Research

T0—The Centre for Municipality Studies at Linköping University

Post-Graduate Research, Photojournalism. Hans K. Lorentzen Fund

LULL, KENNETH

**FROM—University of Wisconsin, Madison
T0—Uppsala University**

Post-Doctoral Research, Fisheries and Ecology. Thord-Gray Memorial Fund, Former Fellows

SANTOS RUTSCHMAN, KIRSTEN

**FROM—Duke University
T0—Uppsala University, Department of Musicology**

Doctoral Research, Musicology. Thord-Gray Memorial Fund, Sven & Ingrid Bernhard Fund

SKINNER, RYAN

**FROM—Ohio State University
T0—Uppsala University**

Post-Doctoral Research, Music and African American Studies. Barth Memorial Fund, Sven & Ingrid Bernhard Fund

TO MULTIPLE COUNTRIES

LOESER, TOM

**FROM—University of Wisconsin-Madison
T0—School of Design and Crafts, University of Gottenberg; Linköpings University; University**

of Lapland, Aalto University, Konstfack, Stockholm, Skansen Open Air Museum

Post-Graduate Research, Woodworking. The Jane and Aatos Erkko Fund

TRANSLATION PRIZE

PHILIP ROUGHTON

FROM—Reykjavík, Iceland

Nadia Christensen Prize for his translation of Wayward Heroes (Gerpla) by Icelandic author Halldór Kiljan Laxness.

MARCUS BROR CEDERSTRÖM

FROM—Madison, WI

Leif and Inger Sjöberg Award for his translation of Rain & Thunder (Regn och åska) by Swedish author Håkan Lindquist

FELLOWS 2016 - 2017

FROM DENMARK

Candidate recommended by the Denmark-America Foundation (Danmark-Amerika Fondent)

JENSEN, METTE LÜTZHØF

T0—City University of New York, The Graduate Center.y

MA-directed study, American Studies. Henrik Kauffmann Fund

TO DENMARK

GIOVINCO, STEVE

FROM—Yale University

Independent Research, Photography. Scandinavian Seminar Grant

GOLDMAN, AARON

FROM—Harvard University

T0—University of Copenhagen, Søren Kierkegaard Research Centre

PhD/Dissertation research, Philosophy of Religion. Amanda E. Roleson Fund

OSLUND, KAREN

**FROM—Towson University
T0—National Museum, Copenhagen**

Post-Doctoral Research, History. Scandinavian Seminar Grant

SCHWARTZ, WYLIE

**FROM—Binghamton University
T0—Asger Jorn Archive, Museum Jorn, Silkeborg, and National Library Archives, Copenhagen & Troels Andersen's Ex-School Archive, Copenhagen**

PhD/Dissertation research, Modern and Contemporary Art History and Theory. Amanda E. Roleson Fund

SHAPIRO, JULIE

**FROM—University of Florida
T0—University of Copenhagen & Museum of Natural History of Denmark**

PhD/Dissertation research, Ecology. Amanda E. Roleson Fund

SPALLETTA, OLIVIA

FROM—Brandeis University
T0—University of Copenhagen

PhD/Dissertation research, Anthropology. Amanda E. Roleson Fund

FROM FINLAND

All candidates recommended by the League of Finnish-American Societies (Suomi-Amerikka Yhdistysten Liitto)

FINER, LAURI

T0—University of Florida

PhD/Dissertation research, Law. The Thor and Saimi Soderholm Fund

KARHU, SANNA

T0—New York University

PhD/Dissertation research, Gender Studies. The Finnish Fund

LASTUNEN, JESSE

T0—Pardee RAND Graduate School

PhD/Dissertation research, Policy Analysis. Saara and Bjorn Wahlroos Fellowship Fund

MÄENSIVU, KAISA

T0—Manhattan School of Music

MA-directed study, Jazz Arts. Jane and Aatos Erkko Fund

PITKÄNEN, SILJA

T0—University of California, Berkeley

PhD/Dissertation research, History.

The Carl G. and Rikke Fredriksen Barth Fund, The Thor and Saimi Soderholm Fund

VÄRE, VILLE

T0—SUNY at Albany

PhD/Dissertation research, Biology. The Martha and Jack McFall Fund

TO FINLAND**HAGIWARA, ASAMI**

FROM—University of Iowa
T0—Sibelius Academy

PhD/Dissertation research, Music-Piano Performance. The Jane and Aatos Erkko Fund

PYLVÄINEN, HANNA

FROM—University of Michigan
T0—University of Lapland, Rovaniemi

MA-directed research, Creative Writing. Scandinavian Seminar Grant

ROLAND-SILVERSTEIN, KATHLEEN

FROM—Syracuse University
T0—Sibleius Academy, University of Helsinki, and MusicFinland

Postdoctoral research, Music-Vocal Performance. The Jane and Aatos Erkko Fund

FROM ICELAND

All candidates recommended by the Icelandic-American Society (Íslensk-Ameríska Félagid)

BJÖRNSSON, GUNNLAUGUR

T0—School of Visual Arts

M.A., Critical Theory and the Arts. Charles K. Willey Memorial Fund

BRAGADÓTTIR, HRAFNHILDUR

T0—Duke Law School

L.L.M, Environmental Law. Charles K. Willey Memorial Fund

GUÐMUNDSDÓTTIR, HELGA

T0—Harvard Law School

LLM-directed study. Thor Thors Memorial Fund, Barth Fund

KURAN, ANNA KOLFINNA

T0—Tisch School of the Arts, New York University

MFA-directed study, Performance Studies. Thor Thors Memorial Fund

ÓLASON, ÓLAFUR INGVI

T0—Columbia University

MFA-directed study, Directing/Screen Writing. Charles K. Willey Fund

RÚNARSSON, VÍDIR THÓR

T0—Columbia University

MS-directed study, Management Science & Engineering. Charles K. Willey Fund

SVAVARSDÓTTIR, GUÐRÚN

T0—New York University

MA-directed study,

Bioethics. Charles K. Willey Fund, Barth Fund

THÓRSDÓTTIR, DANIELLA JÓHANNA

T0—University of Vermont

PhD-directed study, Neuroscience. Thor Thors Memorial Fund

TÓMASDÓTTIR, ANNA MARÍA

T0—Pace University

MFA-directed study, Directing. Charles K. Willey Fund

TO ICELAND**CONNORS, COLIN**

FROM—University of Wisconsin-Madison
T0—The Place Name Institute of Iceland

PhD/Dissertation research, Scandinavian Studies – Folklore. Thor Thors Memorial Fund, Scandinavian Seminar Grant

DELUCA, ERIK

FROM—University of Virginia
T0—Iceland Academy of the Arts

PhD/Dissertation research, Music Composition. Sven & Ingrid Bernhard Fund, Former Fellows Fund, Hans K. Lorentzen Fund

LEISER, JEFFREY

FROM—Mesa College
T0—Estate of Friðrik Erlings, Laugarbrekka

MA-directed research, Opera. Sven & Ingrid Bernhard Fund

FROM NORWAY

All candidates recommended by the Norway–America Association (Norge–Amerika Foreningen)

ANDERSEN, MARIUS BJELDE

T0—California Polytechnic State University

MS-directed study, Fire Protection Engineering. Norway House Foundation Grant

BERNHARDT, IDA STANGE

T0—Catholic University of America

PhD/Dissertation research, Psychology. Andrew E. and G. Norman Wigeland Fund

EKHAUGEN, LENE

T0—Stanford University

PhD/Dissertation research, Political Science. Norway House Foundation Grant

FALCH, RANVEIG

T0—University of California, San Diego (Fall 2016) and University of California, Berkeley (Spring 2017)

PhD/Dissertation research, Economics. Norway House Foundation Grant

FLATABØ, RANVEIG

T0—Massachusetts Institute of Technology

PhD/Dissertation research, Physics. Stolt-Nielsen Fund for Education

GAASRUD, CELINE

T0—Columbia University

MS-directed study, Sustainability Management. Mathilde Aas Fund, King Håkon VII Fund

GRIMSTAD, AUDUN

T0—School of Visual Arts

MFA-directed study, Illustration. Andrew E. and G. Norman Wigeland Fund, Pratt/Johnson Fund, King Håkon VII Fund

HAALAND, INGAR SYNNEVA

T0—University of California, Berkeley

PhD/Dissertation research, Economics. Andrew E. and G. Norman Wigeland Fund, Norway House

HALLSTEINSEN, INGRID

T0—University of California, Berkeley

PhD/Dissertation research, Electronic Engineering. Norway House Foundation Grant

HAUGEN, JANNE BORGE

T0—University of Massachusetts

PhD-directed study, Biology. Andrew E. and G. Norman Wigeland Fund, Stolt-Nielsen Fund for Education

KAUREL, JON

T0—Columbia University

PhD/Dissertation research, Education. Andrew E. and G. Norman Wigeland Fund

KIERULF-VIEIRA, KIRSTEN

T0—Columbia University

MA-directed study, Political Science. Andrew E. and G. Norman Wigeland Fund

KVANGRAVEN, INGRID HARVOLD

T0—The New School

PhD-directed study, Economics. King Håkon VII Fund, Andrew E. and G. Norman Wigeland Fund

OLAFSRUD, ODA

T0—The New School, Parsons School of Design

MA-directed study, Architecture. Andrew E. and G. Norman Wigeland Fund

REHN, CARL FREDRIK

T0—Massachusetts Institute of Technology

PhD-directed study, Engineering. Andrew E. and G. Norman Wigeland Fund

SMITH, IDA DOKK

T0—University of California, Berkeley

PhD/Dissertation research, Political Science. Norway House Foundation Grant

SOLBERG, FREDRIK SAMDAL

T0—Massachusetts Institute of Technology

Graduate research, Engineering. Håkon Styri Fund, Andrew E. and G. Norman Wigeland Fund

STØA, HEIDI

T0—Indiana University

PhD-directed study, English Literature. King Olav V Fund

TO NORWAY**BARKVE, MARIT**

**FROM—University of Wisconsin–Madison
T0—University of Oslo**

PhD/Dissertation research, Scandinavian Studies, Literature. Crown Princess Märtha Friendship Fund

MORRISON, DONALD

**FROM—University of Illinois at Chicago
T0—University of Oslo**

Postdoctoral research, Microbiology. Carol and Hans Christian Sonne Fund, James L. Howard Grant

STRATIGAKOS, DESPINA

**FROM—University at Buffalo
T0—Oslo University Library and Norwegian University of Science and Technology, Trondheim**

Postdoctoral research, Architectural History, National Archives of Norway. Crown Princess Märtha Friendship Fund

FROM SWEDEN

All candidates recommended by the Sweden-America Foundation (Sverige-Amerika Stiftelsen)

ABID, SOUAD SOUHED

T0—Georgetown University

MS-directed study, Foreign Service. Marcus and Amalia Wallenberg Fund

BENSON, MARTIN

T0—Stony Brook University

PhD-directed study, Philosophy. Thord-Gray Memorial Fund

BJÖRCK, JOHAN

T0—Cornell University

PhD-directed study, Computer Science. Dr. Mary Jane Oestmann Fund

EKVALL, KARL OSKAR

T0—University of Minnesota

PhD-directed study, Statistics. Marcus and Amalia Wallenberg Fund

TO SWEDEN**ANDERSON, CLAIRE**

**FROM—University of Washington
T0—Svensk Visarkiv**

PhD/Dissertation research, Ethnomusicology. Thord-Gray Memorial Fund

CONRAD, JO

**FROM—University of California, Berkeley
T0—Swedish Children's Book Institute**

Postdoctoral research, Children's Books/Nationalist Projects. Bernadotte Fund

KENDALL, MARK

**FROM—School of Visual Arts, NYC
T0—University of Umeå**

Postgraduate research, Filmmaking. Scandinavian Seminar Grant

MELKER, ANNA

**FROM—University of California, Santa Barbara
T0—KTH Royal Institute of Technology**

PhD/Dissertation research, Materials Chemistry. John G. Bergquist Fund

MITCHELL, MARK

**FROM—University of Cincinnati
T0—Swedish University of Agricultural Sciences**

PhD/Dissertation research, Biology/Ecology. Scandinavian Seminar Grant, Thord-Gray Memorial Fund

PITTS, MARTA

**FROM—The Graduate Center, CUNY
T0—Arendus Ltd, Visby & Uppsala University Campus Gotland in Visby**

PhD/Dissertation research, Zooarchaeology. Thord-Gray Memorial Fund

SJOHOLM, BARBARA

FROM—University of Washington

Independent Research, Creative Writing. Thord-Gray Memorial Fund

TO MULTIPLE COUNTRIES**DELVAUX, MATTHEW**

**FROM—Boston College
T0—National Museum of Denmark, Copenhagen & Ørholm, Viking Ship Museum, Roskilde; Bornholm Museum, Rønne; Ribe Viking Museum; Swedish History Museum, Stockholm; Lund University Historical Museum; Gotland Museum, Visby; Museum of Cultural History, Oslo**

PhD/Dissertation research, Medieval History and Archaeology. Amanda E. Roleson Fund, The Sather Fund, Thord-Gray Memorial Fund

PARKINSON, NICHOLAS

**FROM—Stony Brook University
T0—Stockholm University & Ny Carlsberg Glyptoteket, Copenhagen**

PhD/Dissertation research, Art History. Amanda E. Roleson Fund, Thord-Gray Memorial Fund

TRANSLATION PRIZE**BARBARA SJOHOLM**

FROM—Port Townsend, WA

Nadia Christensen Prize for her translation of *Clearing Out (Rydde ut)* by Norwegian author Helene Uri

KARA BILLEY THORDARSON

FROM—Red Deer, Alberta

Leif and Inger Sjöberg Award for her translation of *Stormwarning (Stormviðvörðun)* by Icelandic author Kristín Svava Tómasdóttir

PUBLIC PROJECT GRANTS

ASF's Public Project Grants provide support for programs of Scandinavian culture, art, and thought across the United States, as well as programs presenting American culture to the Nordic countries. During 2015–2016, \$28,500 was awarded in grants to twenty-one public projects; in 2016–2017 an additional \$34,600 was awarded to nineteen projects. In cooperation with distinguished institutions across the U.S. and abroad, funding is allocated to allow institutions of all sizes to add programming focused on Nordic culture.

PUBLIC PROJECT GRANTS FUNDED BY ASF JULY 2015 - JUNE 2016

Akvavit Theatre, Chicago, IL

In support of a production of Sofia Freden's *Hand in Hand* at The Den Theatre in Chicago, Illinois.

American Federation of Arts, New York, NY

In support of inclusion of Nordic artists in the travelling exhibition *Women Artists in Paris, 1850-1900*.

American-Scandinavian Association at Augustana College, Moline, IL

In support of Midsummer concerts by Sweden's "Jenny Lind" scholar, mezzo-soprano Karin Osbeck.

American Swedish Historical Foundation, Philadelphia, PA

In support of the exhibition *Flowers and Monsters: Hand-carved Furniture by Karl von Rydingsvard*.

American Swedish Institute, Minneapolis, MN

In support of an exhibition of works by contemporary Swedish watercolor artist, Lars Lerin.

Battery Dance Corporation, New York, NY

In support of the American debut of the Pori Dance Company at the Battery Dance Festival, during its 35th anniversary celebration.

Bishop Hill Heritage Association, Bishop Hill, IL

In support of Swedish folk art workshops.

Companion Star, Inc., Bellport, NY

In support of a performance of *Drömseminarium/Dream Seminar* at The Gateway Theatre.

Eastern New Mexico University Foundation, Portales, NM

In support of "Sibelius, Grieg, and Heise: A Song Recital and Masterclass".

Imagine Ballet Theatre Inc., Bountiful, UT

In support of "Bournonville Workshop with the Masters" and a performance of *Konservatoriet*.

Joyce Theater Foundation, Inc., New York, NY

In support of the U.S. premiere of Danish Dance Theatre's *Black Diamond* in a weeklong engagement at The Joyce Theater.

Lampo, Inc., Chicago, IL

In support of performances by Norwegian experimental artist Lasse Marhaug in Chicago, December 2016.

New World Symphony, Inc., Miami Beach, FL

In support of *Symphonic Dances*, two concerts featuring Finnish conductor Susanna Mälkki and cellist Anssi Karttunen.

New York Scandia Symphony, Inc., New York, NY

In support of the Scandinavian Music Festival in Fort Tryon Park.

Ojai Festivals Ltd., Ojai, CA

In support of performances of the works of contemporary Finnish composer Kaija Saariaho at the 2016 Ojai Music Festival.

Open Source Gallery, Inc., New York, NY

In support of artists' travel for the site-specific installation *Place. Presence* by the Norwegian artist group Prosjektrom Normanns.

Other Minds, San Francisco, CA

In support of performances by Norwegian composers Cecilie Ore and Lasse Thoresen and the six-person vocal ensemble Nordic Voices at the "Other Minds 21 Festival of New Music".

Performance Space 122, Brooklyn, NY

In support of the presentation of *O'DEATH* by Iver Findlay, Marit Sandsmark and Pal Asle Pettersen, in collaboration with Jason Røgenes, during the January 2016 COIL Festival.

TAK ensemble, New York, NY

In support of a collaboration between TAK and the Icelandic artist collective Errata for multi-media concerts, with five world premieres in Ísafjörður and Reykjavík.

Theater for a New Audience, New York, NY

In support of rotating repertory productions of Ibsen's *A Doll's House* and Strindberg's *The Father* and associated events.

Vesterheim Norwegian-American Museum, Decorah, IA

In support of participation by two Norwegian folk art experts in craft workshops.

PUBLIC PROJECT GRANTS FUNDED BY ASF JULY 2016 - JUNE 2017

Arts Midwest, Minneapolis, MN

In support of Arts Midwest Folkefest, a tour by two Nordic ensembles, Kardemimmit from Finland and Mountain Meeting from Sweden, to six small communities in North Dakota, South Dakota, Iowa, Minnesota, Wisconsin, and the Upper Peninsula of Michigan.

Bay Area Children's Theater, Oakland, CA

In support of a production of Astrid Lindgren's *Pippi Longstocking*, as part of Bay Area Children's Theatre's 2016-2017 season.

Bishop Hill Heritage Association, Bishop Hill, IL

In support of performances by the Swedish jazz folk trio Piatruba at the Dairy Building in Bishop Hill, IL.

Contemporary Arts Center, New Orleans, LA

In support of an exhibition entitled *Jockum Nordström: Songs of Innocence and of Experience*.

Dorian Wind Quintet Foundation, New York, NY

In support of the commissioning of a work for wind quintet and piano by Norwegian composer and pianist Wolfgang Plagge, and Mr. Plagge's participation in the world premiere at Bargemusic, Brooklyn, NY.

Ducdame Ensemble, Brooklyn, NY

In support of a new translation and adaptation of *Den Bergtagna (The Enchantment)*, by Swedish author Victoria Benedictsson, with sixteen performances at the HERE Arts Center.

Edvard Grieg Society of the Great Lakes, Goshen, IN

In support of the participation of Norwegian bass-baritone Njål Sparbo at EGSOGL's inaugural conference, "SalzBergen: Exploring the Intersection between Wolfgang Amadeus Mozart and Edvard Grieg," at Goshen College.

International Print Center NY, New York, NY

In support of Icelandic artist, author, and translator Hallgrímur Helgason's participation in a live interview on creativity in Iceland in conjunction with *Other Hats: Icelandic Printmaking*, April 14 - June 14, 2017. Thor Thors Memorial Fund.

Morgan Library and Museum, New York, NY

In support of the exhibition *Treasures from the Nationalmuseum of Sweden: The Collections of Count Tessin*, February 3 - May 14, 2017. New Sweden '88 Fund.

Museum of Danish America, Elk Horn, IA

In support of national touring of the exhibition *The*

Whimsical World of Bjørn Wiinblad to the Pacific Northwest, December 1, 2016 - December 31, 2017. Scan|Design by Inger and Jens Bruun Grant.

The New 42nd Street, New York, NY

In support of performances of *Water on Mars*, a play for children, by Plastic Boom (Stockholm, Sweden), February 8 - March 26, 2017. New Sweden '88 Fund.

The New School's Mannes School of Music, New York, NY

In support of performances of Kaija Saariaho's *La Passion de Simone*, at the Gerald W. Lynch Theater, NYC, November 19-20, 2016. Finnish Fund.

New York Live Arts, New York, NY

In support of performances of Stig Dagerman's drama *Marty's Shadow*, presented by the August Strindberg Repertory Theater of New York at the Gene Frankel Theater, March 11 - April 1, 2017. New Sweden '88 Fund.

New York Opera Society, New York, NY

In support of performances of Gisle Kverndokk's *Upon This Handful of Earth*, in New York City and Washington, D.C., February 18 - 28, 2017. Andrew E. and G. Norman Wigeland Fund.

New York Scandia Symphony, New York, NY

In support of the Scandinavian Music Festival in Fort Tryon Park, a unique series of three outdoor summer concerts, June 11-25, 2017. Helen Lee and Emil Lassen Fund, Finnish Fund, New Sweden '88 Fund.

GRANTS FOR SCANDINAVIAN FOLK ARTS & CULTURAL TRADITIONS IN THE UPPER MIDWEST

In 2017, ASF announced two new grant programs to support Scandinavian folk arts and cultural traditions in the Upper Midwest (defined as North Dakota, South Dakota, Iowa, Minnesota, Wisconsin, and the Upper Peninsula of Michigan). These programs will recognize and celebrate the mastery of individual artists and practitioners, facilitate the cultivation of skills and understanding of Scandinavian traditions among younger generations, bring greater visibility to the arts, and highlight the importance of cultural expression to all of our lives. The programs further ASF's goal of celebrating and preserving Nordic (Denmark, Finland, Iceland, Norway, Sápmi, Sweden) cultures throughout the United States.

The guidelines for the new programs were released in May and the first deadline for applications was August 17.

INTERNSHIPS & TRAINING



—VILLE JOONA AND KIMMO IN SAN FRANCISCO

The American-Scandinavian Foundation's Internship & Training Program facilitates cultural and educational exchange between the United States and the five Nordic countries. During the two-year period covered by this report, ASF welcomed 305 young Scandinavians to the United States to participate in internships and training programs in twenty-seven states.



—ASTRID, MUSEUM OF DANISH-AMERICA

Designated by the U.S. Department of State, ASF provides J-1 visa sponsorship for these ambitious participants, making it possible for them to acquire hands-on experience and gain new skills and knowledge. ASF has welcomed more than 16,000 interns and trainees since initiating this program in 1949.

Scandinavian interns and trainees gain valuable professional experience and build beneficial relationships, while learning American business techniques to be applied in their home countries. Students and young professionals participate in a wide range of fields from fashion design to mechanical engineering. Each participant is welcomed by the host firm as a member of the team and receives a direct, personal introduction to American practices in his or her professional field.

ASF is grateful to the many American businesses and organizations that have made it possible for these interns and trainees to have this experience.

FROM ASF INTERNS & HOST FIRMS

"I loved the whole experience of living there and getting to know the culture, the places, and the people. I had visited the U.S. previously and of course I had seen a lot about the American culture on the media, but living there and being part of the culture gives you a totally different experience."

—Annastiina Virkkunen, Swagger Films

"I am leaving feeling more confident in every aspect of museum work — how an exhibit gets made, how to make a strategic plan, how to connect with the local community, etc. I feel confident that this experience will be of great value for me in the future."

—Astrid, The Museum of Danish America

"To see the theory I'm taught in school being executed and used in the "real world" is a great value for my future career. Also, the level of responsibilities and being a part of a great team is something that has contributed to my professional self-esteem and is something that will definitely influence my future."—Karen Becker, Fritz Hansen Inc.

—Karen Becker, Fritz Hansen Inc.

"ASF has been amazing helpful and efficient. After other arrangements fell through, staff was able to assist us on short notice with the necessary forms and documentation to host [our intern]." —Lena Golze Desmond, Human Impacts Institute

TO APPLY

Visit amscan.org/internships-and-training/ for more information and guidelines on how to apply for J-1 visa sponsorship through the American-Scandinavian Foundation's Internship & Training Program.

INTERNSHIPS & TRAINING CONTINUED

In addition to assisting Scandinavian interns and trainees with the J-1 visa sponsorship and application process, ASF promotes international exchange and understanding by providing program participants with information about various aspects of American culture. This effort was initiated in 2012 when the U.S. Department of State encouraged sponsors to focus on the cultural aspects of exchange programs. As a result, ASF launched a series of regular events for its New York area participants, offering opportunities to attend various Broadway musicals, holiday parties, and sporting events, and strives to expand these opportunities across the country. ASF also distributes a monthly guide to American culture.



—INTERNS AT METS/YANKEES GAME, 2015

Since 1980 ASF has worked closely with two groups of engineering students from Chalmers—the USA Summer Internship Program and the Chalmers Engineering Trainee Appointment Committee. ASF assists the students with practical arrangements for summer internships in the United States and provides J-1 visa sponsorship. The students begin their experience in the United States as a group with a visit to New York City and an orientation session at ASF's offices at Scandinavia House.

ASF is proud to continue its support of these motivated students and wishes past, current, and future participants continued success in their endeavors.

HOST FIRMS IN THE UNITED STATES

Over the course of this report ASF sponsored J-1 visas for interns and trainees in twenty-seven states. Many of the host firms listed below have ongoing relationships with ASF and regularly offer internship and training positions to Scandinavians.

California

GoodU LLC, Tradeshift Inc, TeselaGen Biotechnology, Tekes Silicon Valley, North Kingdom Design & Communication INC., Danish Design Store LLC, Stott

& Associates, Carl Hansen & Son ,ALOM Technologies Corporation, Avalex, Inc., B-Reel Inc., DNA2.0, DreamWorks Animation, EkiTravels LLC, Finpro USA Inc, Monte Stott & Assoc., Naturale LLC dba Crateful, Nialaya Inc., Office of Emergency Services, PACE – Advanced Water Engineering, Phillips Auto, Pigs In Flight, Inc., Retail Solutions, Inc., Richardson Oliver Law Group LLP, RJA, Samsung, San Diego Habitat for Humanity, San Francisco Toyota, Sprinklr, Tribogenics, IndieBio, Phillips Auto, Richardson Oliver Law Group LLP, ATUM, Avalex, Inc., Sid Lee USA, Inc., Host Compliance LLC, Ingram Micro Inc., PACE - Advanced Water Engineering, Active Theory, As You Sow, Project Inform, Montag LLC, Logonet USA Inc., Goodby Silverstein & Partners

Connecticut

Retail Solutions

District of Columbia

Institute for the Study of War, Worldwatch Institute

Florida

Honorary Consulate of Finland / FACC, EkiTravels LLC, Amerden Inc., Bounty Group Holding, LLC

Georgia

Akzo Nobel-Pulp and Performance Chemicals, ASSA ABLOY, Qmatic, Select Sport America, SpacePole Inc, Hatchfilms, Poetry Management Consulting, Inman Solar

Hawaii

Alii WoodTailors

Illinois

Swedish American Museum, Kalle USA Inc., Cozad Asset Management, Inc., Myefski Architects, Inc., Persson Innovation Inc, PR Electronics Inc.

Indiana

Delphi

Iowa

Museum of Danish America

Maryland

Biolin Scientific.com; NVI, Inc.

Massachusetts

Brigham and Women's Hospital, Arcusys, Inc., BISON, Bolt Depot, Inc., Black Math, Inc., Mercedes-Benz of Boston

Maryland

NVI, Inc.

Michigan

The Finnish American Reporter, Finnish American Heritage Center, FEV North America, Inc., General Motors, LLC, Henry Ford Macomb Hospital, Michigan Democratic Party

New Hampshire

Ecco USA, Inc.

New Jersey

Applied Engineering & Technology, Robert Pluhowski Furniture, Shipco Transport In., SKIM



—ANNASTIINA VIRKKUNEN IN HOUSTON

New York

72andSunny NYC, ABR Builders LLC, American Documentary, Inc., Berkery Noyes Investment Bank, Bower Studios Inc., Brooklyn Fashion + Design Accelerator, BTS USA, Inc., Colangelo & Partners, COOKFOX Architects DPC, Cooper Clarke Real Estate, Corsearch, a Wolters Kluwer business, DIDB NYC Inc., Elle Communications, FamilyCook Productions, Finnich Cultural Institute in New York, Finnish American Chamber of Commerce, Inc., Fritz Hansen Inc, H5 Property, Harbour Outdoor, Johannes Leonardo, Kaffe 1668, Marchesa, Maryam Nassir Zadeh, Meyer Davis Studio, MeyersUSA, Narratively, Inc., NUDGE, OutRight Action International, Portland Communcations, Rosie Applications Inc., SACC, Inc., Salmagundi Club, SO-IL Office Ltd, Soren Rose, The Advance Group, The Mechanism, The Row, TODA, Vera Wang, Viceroy Collections LLC, Westmusa, Inc., Xenomorph Software Inc., Your Majesty Co., Young and Shand Inc. dba Nudge, Bradbury Lewis PR, American-Scandinavian Foundation, Derek Lam, Marc Jacobs International, LLC, Huga, LLC, Anna Sui Corp., BIG Architecture, DPC, Unacast, Inc., TigerRisk Partners LLC, Theo Wenner LLC, Vincetta, BTS USA Inc., Style Council, GrowthWheel International Inc., Holland & Knight LLP, SEWARD & KISSEL, NORDLYS GROUP LLC, People Ideas & Culture, LLC, Lawlor Media Group, International School of Brooklyn, ASKA NYC, Linkfire Inc., H5 Property, Cowan, Liebowitz & Latman, P.C.

North Carolina

Southeast TechInventures, Inc.

Ohio

Columbus Regional Hospital, IceTech America

Oklahoma

ATC Drivetrain, Cytovance Biologics, Inc.

Oregon

Oddfellows LLC, Rex Post, LAIKA

Pennsylvania

The Barnes Foundation, Freedom Toyota, Sound Technology, Inc.

Rhode Island

Retail Solutions Inc., Toci

South Carolina

Outokumpu Stainless Bar, Inc.

Tennessee

Permobil

Texas

Swagger Films, OMNE Inc., Pacific Summit Energy LLC, Game on Arena Sports

Virgin Islands

Blak Corporation

Virginia

United Way Worldwide, NADIC, ICMEC, nectar ICC

Washington

Bohlin Cywinski Jackson, Mahlum Architects, Inc.

SCANDINAVIA HOUSE PROGRAMS



—**INDEPENDENT VISIONS: HELENE SCHJERFBECK AND HER CONTEMPORARIES**—IMAGE BY CHRISTINE BUTLER

Each year the American-Scandinavian Foundation presents more than 150 cultural and educational programs at Scandinavia House: The Nordic Center in America. In addition to serving as the headquarters for ASF, Scandinavia House is a showcase for Nordic culture and a forum for the exchange of ideas and information.

EXHIBITIONS

The American-Scandinavian Foundation presents museum-quality exhibitions at Scandinavia House that highlight excellent artistic achievements in the Nordic countries, covering both historical and contemporary subjects in a wide variety of media.

Exhibitions at Scandinavia House are presented in the third floor galleries: Stolt-Nielsen Gallery; Inger G. and William Ginsberg Gallery; Hartvig and Olette Gundersen Gallery; and Leif Höegh Gallery.



—**TIINA KIVINEN, BOLD STOCKINGS, 2015 (DETAIL).**

Prize Prints: The Queen Sonja Print Award **FRI—4-17-2015 THROUGH SAT—8-1-2015**

Prize Prints celebrated The Queen Sonja Print Award, a biennial prize established to encourage young artists working in the graphic arts. The exhibition featured recent work by the 2012 and 2014 prize winners Tiina Kivinen (Finland) and Svend-Allan Sørensen (Denmark), as well as a selection of works by the prize's founders,

printmakers H.M. Queen Sonja of Norway, Kjell Nupen, and Ørnulf Opdahl. The exhibition also recognized the exciting international collaboration between the print shops Ateljé Larsen (Helsingborg, Sweden) and Universal Limited Art Editions (Long Island, NY).



—**VILHELM HAMMERSHØI, VIEW OF JAEGBORG-ALLE, 1892 (DETAIL)**

Painting Tranquility: Masterworks by Vilhelm Hammershøi from SMK –The National Gallery of Denmark

SAT—10-17-2015 THROUGH SAT—3-26-2016

Painting Tranquility presented 24 masterpieces by the internationally-renowned Danish painter Vilhelm Hammershøi. Drawn entirely from the extensive collection of SMK — The National Gallery of Denmark, the exhibition featured paintings from all four of the main genres in which Hammershøi worked: reduced landscapes, unpopulated urban cityscapes, portraits, and spare sunlight-infused interiors. This exhibition, which offered an intimate look into the artist's life and enigmatic work, received critical acclaim, with the works described as a "habit-forming drug" (*New Yorker*) by an artist who "keeps you thinking long after you leave the exhibition" (*Wall Street Journal*).



—EIJJA-LIISA-AHTILA, VAAKASUORA

Another North: Landscape Reimagined
FRI-5-6-2016 THROUGH SAT-8-6-2016

Another North: Landscape Reimagined featured the work of six innovative contemporary Nordic artists who use landscape to limn the boundary between the known and the unknown, reimagining it as a multivalent art space at once familiar and otherworldly, visible and invisible. Comprising photographic and video works, the exhibition explored landscape as a place of complication, rather than revelation, and investigated channels into new ways of seeing. As described in *The New Yorker*, “The Icelandic and the Norse myths have their visual heirs in the vivid, camera-based works of these six Nordic artists.” The exhibition included works by Eija Liise Ahtila, Ole Brodersen, Sigurður Guðjónsson, Simen Johan, Susanna Majuri, and Pentti Sammallahti.



—LIBIA CASTRO & ÓLAFUR ÓLAFSSON, UNTITLED (DETAIL)

Borrowed Time: Icelandic Artists Look Forward
SAT-10-15-16 THROUGH SAT-2-11-2017

Borrowed Time: Icelandic Artists Look Forward presented artworks by contemporary Icelandic artists that invited viewers—both adults and children—to explore new modes of seeing and responding to the challenges of sustainability. Featuring photography, video, collage, and installation, the exhibition encouraged viewers to reconsider the issues that surround our changing societies. As reviewed in *ArtDaily*, these artworks “reflect on and interrogate the idea of sustainability from a variety of perspectives, with the aim of challenging our understanding of our place in the world and influence beyond it.”

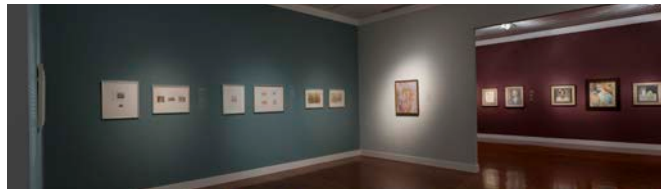


—HELENE SCHJERFBECK, *GIRL FROM EYDTKUHNE II (DETAIL)*, 1927. COURTESY OF FINNISH NATIONAL GALLERY/ HANNU AALTONEN.

Independent Visions: Helene Schjerfbeck and her Contemporaries from the Collection of Ateneum, Finnish National Gallery

SAT-4-29-2017 THROUGH SAT-10-7-2017

Independent Visions presented a grouping of fifty-five works by four Finnish artists, on view for the first time in the U.S. This exhibition highlighted the pioneering role of these artists at the end of the 19th century and in the early decades of the 20th century: Helene Schjerfbeck (1862–1946), Sigrid Schauman (1877–1979), Ellen Thesleff (1869–1954), and Elga Sesemann (1922–2007), who all lived and worked through major political and cultural changes. Spanning the turbulent and progressive periods of the late 19th and early 20th centuries, the exhibition featured paintings and works on paper that depicted the unique vision and bold techniques favored by these independent, courageously fearless artists, with their “uncompromising, if at times highly affected, talent” (*New Criterion*).



—INDEPENDENT VISIONS—IMAGE BY EILEEN TRAVELL

SCANDINAVIA HOUSE PROGRAMS CONTINUED



—VICTOR BORGE HALL, SCANDINAVIA HOUSE—IMAGE BY EILEEN TRAVELL/ASF

FILMS

ASF regularly held film screenings at Scandinavia House including annual presentations of new Nordic Cinema and Nordic Oscar contenders, along with the consistently popular Nordic Noir crime series and exhibition-related films. Films are held in Victor Borge Hall, named in honor of the legendary Danish entertainer in recognition of his unwavering devotion to Scandinavian culture and his generosity to Scandinavia House.

A Portrait of Creativity: Edvard Munch on Film

WED—7-1-2015

The Sun /Solen

Let The Scream Be Heard /La skrik bli hørt



—LET THE SCREAM BE HEARD—IMAGE COURTESY OF THE NORWEGIAN FILM INSTITUTE

Nordic Noir: Look of a Killer

WED—7-8-2015 THROUGH THU—7-30-2015

The Man from Across the Border /Mies rajan takaa

Good Brother, Bad Brother /Hyva veli, paha veli

Far Away Friends /Vstavat kaukana

The Father, The Son, and the Unholy Spirit /Isa, poika ja paha henki

Ingrid Bergman at 100: A Swedish Idol

WED—9-30-2015 THROUGH FRI—10-16-2015

Swedenhielms

Dollar

Intermezzo



—DOLLAR—IMAGE COURTESY OF LOUIS HUCH/AB SVENSK FILMINDUSTRI, 1938



—THE CEREMONY—PHOTO BY DANIEL TAKÁCS

The Ceremony /La Cérémonie

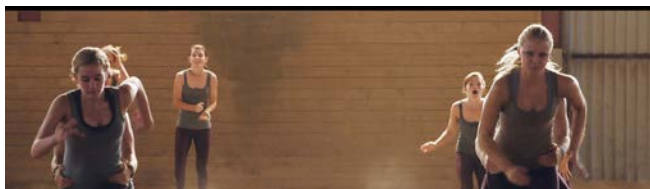
THU—10-8-2015

The Northern Lights: A Magic Experience

SAT—10-17-2015

She Monkeys /Apflickorna

WED—10-21-2015



—SHE MONKEYS—IMAGE COURTESY OF PC ATMO PRODUKTION AB

Inuit

MON—10-26-2015

Painting Cinema: Vilhelm Hammershøi's Palette, Themes and Moods on Film

WED—10-28-2015 THROUGH FRI—12-11-2015

The Celebration /Festen

Tokyo Story /Tōkyō Monogatari

Hôtel Monterey

The Royal Tenenbaums

A Pigeon Sat on a Branch Reflecting on Existence

Painting Cinema Shorts Program

WED—11-11-2015 & FRI—11-13-2015

*Couple F*cking /Det knullande paret*

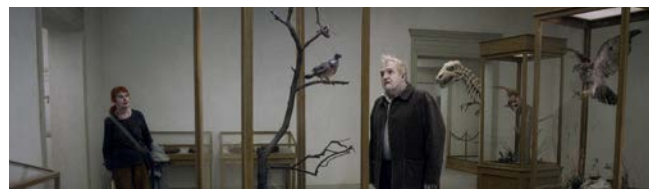
The Flat /Byt

World of Glory /Härlig är jorden

Blessed Be This Place /Velsignet være dette sted

Nora

Spring /Frühling



—A PIGEON SAT ON A BRANCH REFLECTING ON EXISTENCE—PHOTO COURTESY OF MAGNOLIA PICTURES

Nordic Oscar Contenders 2016**WED—1-6-16 THROUGH WED—1-20-2016**Norway: *The Wave /Bølgen*Iceland: *Rams /Hrútar*Denmark: *A War /Krigen*Estonia: *1944*Finland: *The Fencer /Meikkailija*Sweden: *A Pigeon Sat on a Branch Reflecting on Existence*

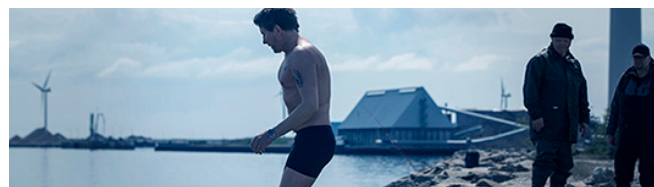
—THE FENCER—IMAGE COURTESY OF MAKING MOVIES

New Nordic Cinema**WED—2-2-16 THROUGH FRI—5-20-2016**Finland/Sweden: *Raspberry Boat Refugee/ Vadelmavenepakolainen*Finland: *Armi Alive! /Armi Elää!*

—7 SÁMI STORIES—PHOTO BY HANS OLOF, COURTESY OF JULEV FILM

Norway/Sweden/Finland: *7 Sámi Stories*Faroe Islands: *Stina Karina, Valley, Guilt/Stina Karina, Dalur, Skyld*Sweden: *From the Depths of My Heart /Från djupet av mitt hjärta*Sweden/Norway: *Underdog /Svenskjävel*Sweden: *The Master Plan /Jönssonligan*Norway: *Blind*Norway: *Women in Oversized Men's Shirts /Kvinner i for store herreskjorter*Denmark: *The Idealist /Idealisten*Denmark: *Silent Heart /Stille Hjerte*Denmark: *Søren Balle /Klumpfisken*Iceland: *Paris of the North /París Norðursins*Iceland/Denmark: *Virgin Mountain /Fúsi***Silent Films from the Golden Age of Danish Cinema****WED—3-23-2016 & WED—3-30-2016***Sealed Orders /Det hemmelighedsfulde X**A Trip to Mars /Himmelskibet***Follow The Money /Bedrag****WED—7-6-16 THROUGH THU—8-4-2016**

Episodes 1-10



—FOLLOW THE MONEY—IMAGE COURTESY OF DR SALES

New Nordic Cinema**TUE—9-6-2016 THROUGH TUE—9-27-2016**Denmark: *Summer of '92*Norway: *Pushwagner*Sweden: *A Man Called Ove /En man som heter Ove*

—A MAN CALLED OVE—IMAGE COURTESY OF MUSIC BOX FILMS

1864**WED—9-28-2016 THROUGH FRI—10-21-2016**

1864 Episodes 1-8

The Heavy Water War /Kampen am tungtvannet**WED—11-2-2016 THROUGH FRI—11-18-2016***The Heavy Water War*, Episodes 1-3**Nordic Oscar Contenders 2016****TUE—12-6-2016 THROUGH WED—12-14-2016**Iceland: *Sparrows /Prestir*Estonia: *Mother /Ema*Sweden: *A Man Called Ove /En man som heter Ove***Finnish Centennial Event****WED—4-5-2017***The Happiest Day in the Life of Olli Mäki /Lymyilevä mies*

—THE HAPPIEST DAY IN THE LIFE OF OLLI MAKI—IMAGE COURTESY OF MUBI

New Nordic Cinema**WED—3-1-2017 THROUGH WED—5-10-2017**Norway: *Welcome to Norway!*Norway: *Returning Home /Å vende tilbake*Norway: *Revenge /Hevn*Sweden: *The Here After /Efterskalv*Sweden: *A Serious Game /Den allvarsamma leken*Denmark: *Rosita*Iceland: *In Front of Others /Fyrir framan addað fólk*Denmark: *Key House Mirror /Nøgle hus spejl*Denmark: *Long Story Short /Lang historie kort***Independent Visions Film Screenings****THU—6-1-2017 & TUE—6-27-2017***The Artist Family /Isorätttyä**The Young Schjerfbeck /Den unga Schjerfbeck***Nordic Noir: Norskov****WED & THUR—6-28-2017 THROUGH 7-27-2017**

Episodes 1-10

SCANDINAVIA HOUSE PROGRAMS CONTINUED



—VICTOR BORGE HALL, SCANDINAVIA HOUSE—IMAGE BY LINDA HAGLUND/ASF

MUSIC & PERFORMING ARTS

Music programs ranged from classical and chamber opera to contemporary, jazz, and new indie music. Performers included the Danish String Quartet, Swedish pianist Per Tengstrand, the Nordic Chamber Opera Company, and Fellows studying music with support from ASF. Performing arts programs also included regular staged readings of contemporary Nordic plays by the Scandinavian-American Theater Company.

Films are held in Victor Borge Hall, named in honor of the legendary Danish entertainer in recognition of his unwavering devotion to Scandinavian culture and his generosity to Scandinavia House.

Røyst Trio

THU—7-9-2015

Sousou & Maher Cissoko

TUE—7-21-2015



—SOUSOU & MAHER CISSOKO—PHOTO BY YOHANNA TROELL

Carl Nielsen & Jean Sibelius 150th Anniversary Concert

With Thomas Storm & Tanya Gabrielian

THU—8-20-2015



—TANYA GABRIELIAN

Scandinavian American Theater Company

MON—9-21-2015

The Remember Me Project

SATContemporary Reading Series

Scandinavian American Theater Company

MONDAYS—10-5-2015 & 11-9-2015

We Are the Voice of Our People

I Love You, Let Me Go

Sauna

Scandinavian Winds Sylvan Winds

THU—12-10-2015

Music on Park Avenue:

Evenings with Pianist Per Tengstrand

SUN—12-13-2015 &

THU—2-4, 4-14, 10-20, & 11-17

The Virtuoso Piano

The Beethoven Sonatas: The Tempest

Heaven and Earth Will Tremble – The Eroica Symphony

The Beethoven Sonatas: Waldstein Sonata

The Beethoven Sonatas: Appassionata



—MUSIC ON PARK AVENUE—IMAGE COURTESY OF PER TENGSTRAND

Virpi Pahkinen

SAT—1-16-2016

Keyboard Conversations® with Jeffrey Siegel

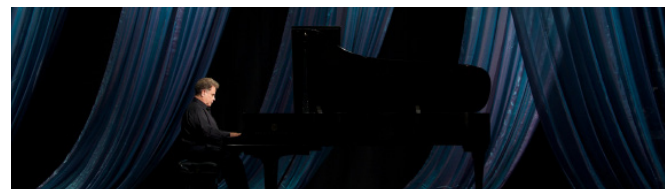
Concerts with Lively Commentary

THURSDAYS—1-21, 4-7, & 5-15

Splendor from Silence (Smetana, Fauré, Beethoven)

The Passionate Love Music of Robert Schumann

Chopin Forever



—KEYBOARD CONVERSATIONS—IMAGE COURTESY OF JEFFREY SIEGEL

SATContemporary Reading Series

Scandinavian American Theater Company

MONDAYS—1-25, 2-29, 5-2, 8-29 & 11-21-2016

White Baby

Refugees

Patriarch

Scenes from a Marriage

Karma for Birds



—WHITE BABY—SCANDINAVIAN AMERICAN THEATER COMPANY

Tuuletär—Captivating Finnish Folk Hop

THU—1-28-2016

Impressions of Hammershøi—The Poetry of Silence

With Nikolaj Hess Trio

MON—2-22-2016

MATA Festival with Ensemble neoN

TUE—4-12-2016

Elves, Trolls, and the Last Dance

With Violinist Eva Ingolf

THU—4-21-2016

The Lost Dog New Music Ensemble-Nørgård in New York

THU—6-16-2016 THROUGH SAT—6-18-2016



—ENSEMBLE NEON—IMAGE BY BLUNDERBUSS

Jazz: Isabella Lundgren and the Carl Bagge Trio

THU—6-23-2016



—ISABELLA LUNDGREN—IMAGE BY IZABELLA NORDFJELL

Europe + Americas with ensemble mise-en

FRI—6-24-2016

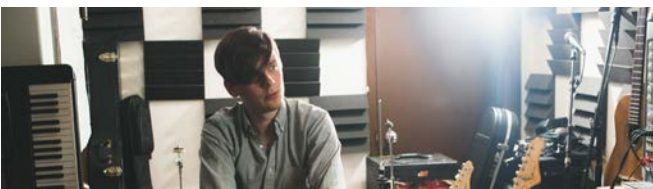
Jazz: Mats Eilertsen Trio

THU—6-30-2016

Jazz: Olli Hirvonen New Helsinki

Oskar Stenmark NY-Nordic Quartet

THU—7-7-2016



—OLLI HIRVONEN NEW HELSINKI

Jazz: Thorleif & Colescott

THU—7-14-2016

Embracing Hiroshima

THU—8-4-2016

Estonian Independence Concert

With the Youth Choir of Tallinn Music High School

SAT—8-20-2016

Northern Voices: Songs from and Inspired by Iceland

With Bragi Bergþórsson and Evan Fein

THU—10-13-2016

CONNECTIONS: Swedish Contemporary Music

With ensemble mise-en

MON—10-24-2016

International Brazilian Opera Company

The Seventh Seal

THU—11-10 & SAT—11-12-2016



—THESEVENTH SEAL—COURTESY OF INTERNATIONAL BRAZILIAN OPERA COMPANY

New York by Norse

With Ivar Bjørnson and Einar Selvik

FRI—12-9-2016

Holiday Concert

SUN—12-11-2016

Audience Orchestra

With Ensemble U

SAT—1-7-2017

Keyboard Conversations® with Jeffrey Siegel

Concerts with Lively Commentary

TUE—1-10 & THU—3-23, 5-4, & 9-28, 2017

Keys to the Classics: Haydn, Mozart, and Beethoven

The Golden Age of the Piano

The Longevity of the Short Piece

Celebrating Leonard Bernstein

Music on Park Avenue:

Evenings with Pianist Per Tengstrand

TUE—1-24, THU—2-23, MON—3-26, & FRI—4-6-2017

Brahms Piano Quintet

The Beethoven Sonatas: Entering the Late Period

Three Centuries of Swedish Music

Masterpieces for Two Pianos

SCANDINAVIA HOUSE PROGRAMS CONTINUED

MUSIC & PERFORMING ARTS—CONTINUED

Folk Music from Dalarna with Piatruba

THU—1-26-2017



—IMAGE COURTESY OF PIATRUBA

Schubert and the Masters of the North

With Peter Friis Johansson

THU—2-2-2017

Kettle Corn New Music Presents Longleash Piano Trio:

Hans Abrahamsen & Kaija Saariaho

SAT—2-11-2017



—LONGLEASH PIANO TRIO—IMAGE BY PASCAL PERICH

SATContemporary Reading Series

Scandinavian American Theater Company

MONDAYS—2-13, 4-3, & 6-5-2017

Thinking Time

Summer without Men

Playing the Queen

Double Portrait - Zivokic and Agerfeldt Olsen

With ensemble mise-en

THU—2-16-2017



—ENSEMBLE MISE-EN—PHOTO BY JULIA HEMBREE

tenThing Brass Ensemble

MON—3-27-2017

WAFChoir

Throughout Time

FRI—4-7-2017

Pieces for Viola D'Amore with Marco Fusi

Restoration

TUE—4-25-2017



—MARCO FUSI

An Evening with Sofia Talvik

THU—4-27-2017

Einojuhani Rautavaara

A Piano Retrospective with Adrian Blanco

WED—5-17-2017

VoNo Presents: Earth Call

THU—6-8-2017

MARET

TUE—6-13-2017



—MARET

Summer Jazz at Scandinavia House

THURSDAYS—6-22-2017 THROUGH 7-27-2017

Olli Hirvonen

Klabbes Bank

Lingonberry Twig in a Cocktail Glass feat. Sirintip

Phasuk

Lage Lund

Sigmar Þór Matthíasson Trio

Christian Winther

LECTURES & LITERARY

Lectures at Scandinavia House continue to bring Americans and Scandinavians together to learn about and discuss a wide range of topics and issues. These ranged from the future of the Arctic to the history of Ibsen and Strindberg, from Nordic architecture to contemporary crime fiction, from classical to emerging writers, and from economics and public affairs to the subjects in the arts. Lecture series were also presented in conjunction with major exhibitions.

Rock, Paper, Scissors

Book Talk with Naja Marie Aidt

THU-9-10-2015—NAJA MARIE, *ROCK, PAPER, SCISSORS*—COVER DESIGN BY N.J. FURL**The Girl in the Spider Web**

Book Talk with David Lagercrantz

TUE-9-15-2015**Ivory Vikings: the Mystery of the Lewis Chessmen**

Book Talk with Nancy Marie Brown

MON-9-21-2015**The Changing Arctic Under U.S. Leadership**

Lecture by Dr. Olav Orheim

WED-9-23-2015

—DR. OLAV ORHEIM

Light and Silence in Nordic Architecture

Lecture with Louis Becker, Henning Larsen Architects

SAT-10-31-2015

—HARPA—IMAGE BY NIC LEHOUX

Artist Talk: Jesper Just with Curator Marianne Torp**SAT-11-14-2015**

—JESPER JUST

Memorandom

Book Talk with Anders de La Motte

MON-12-7-2015**The Silent Uncanny**

Lecture with Dr. Susan Sidlauskas, Dr. Margaret Carroll,

Dr. Ara Merjian, Dr. Thor J. Mednick, Dr. Gail Levin, Dr.

Patricia G. Berman

SAT-2-20-2016**To the Bomb and Back:****Finnish War Children Tell Their World War II Stories**

Book Talk with Sue Saffle

MON-3-7-2016**Stockholm Noir**

Book Talk with Nathan Larson

MON-3-14-2016**Bret Easton Ellis and Other Dogs**

Book Talk with Lina Wolff

THU-3-31-2016**Ibsen & Strindberg's Battle of the Sexes**

Panel in cooperation with Theater for A New Audience

With Joan Templeton, Eszter Szalczler, Jonathan Kalb

MON-5-9-2016

—HENRIK IBSEN & AUGUST STRINDBERG

The Nordic Theory of Everything:**In Search of a Better Life**

Book Talk with Anu Partanen

TUE-6-28-2016**The Mystery of the Lone Wolf Killer: Anders Behring****Breivik and the Threat of Terror in Plain Sight**

Book Talk with Unni Turrettini

MON-7-18-2016**Soft City by Hariton Pushwagner**

Book Talk with Karen Green

THU-9-15-2016**One of Us Is Sleeping**

Book Talk with Josefine Klougart & Maria Marqvard Jensen

WED-9-19-2016**So Much for That Winter**

Book Talk with Dorthe Nors

WED-9-21-2016

—DOROTH NORS—IMAGE BY ASTRID DALUM

SCANDINAVIA HOUSE PROGRAMS CONTINUED

LECTURES & LITERARY—CONTINUED

Moonstone: The Boy Who Never Was

Book Talk with Sjón, Sam Sacks

MON—9-26-2016



—SJÓN—IMAGES COURTESY OF FARRAR, STRAUSS, AND GIROUX

The Midwife

Book Talk with Katja Kettu and Tuomas Hiltunen

TUE—10-4-2016

After A Dance Is Danced: Panel Discussion

With the Cullberg Ballet and Dir. Gabriel Smeets

MON—10-10-2016

Dance Dialogue

Conversation with Danish Dance Theatre

Dir. Tim Rushton, Dir. Martin Wechsler

TUE—10-11-2016



—DANISH DANCE THEATRE—IMAGE BY SOREN MEISNER

The Man Who Stole Himself

Book Talk with Gísli Pálsson

TUE—11-15-2016

Symposium: The Good Childhood in a World of Change: A Nordic-American Dialogue on Best Educational Practices

FRI—11-18 & SAT—11-19-2016

New Literature from Europe Festival

THU—12-8 THROUGH SAT—12-10-2016



—NEW LITERATURE FROM EUROPE:INVENTING REALITIES

Travel in Scandinavia, Lecture Series

MON—1-9 THROUGH 2-13-2017

Iron Dawn: The Monitor, The Merrimack, and the Civil War Sea Battle that Changed History

Book Talk with Richard Snow

TUE—1-24-2017

Compartment No. 6: Reading and Conversation

With Rosa Lixson

MON—3-13-2017

Marty's Shadow: Heroism, War, and the Monster Mother: Three Perspectives on a Play by Stig Dagerman

TUE—3-21-2017



—STIG DAGERMAN

Dag Hammarskjöld: Markings of His Life

Book Talk with Henrik Berggren

TUE—3-28-2017

The Weaver

Book Talk with Emmi Itäranta

THU—4-20-2017

Peder Balke: Painter of Northern Light

Symposium with Asher Miller, Knut Ljøgdø, Carl-Johan
Olsson, Christopher Riopelle, Kari Brønne, Patricia Berman

FRI—4-21-2017

The Once and Future Arctic

Symposium with Dr. Robert Corell, Dr. Olav Orheim, Dr.
Peter Schlosser, Dr. Maribeth Murray, Dr. Iulie Aslaksen,
Alf Håkon, Vera Metcalf, Dr. Lawrence Hamilton, Dr.
Stephanie Pfirman, Jody Sperling

FRI—4-28-2017



—THE ONCE AND FUTURE ARCTIC—IMAGE BY OLOF UTSI, IMAGEBANK.SWEDEN.SE

My Cat Yugoslavia

Book Talk with Pajtim Statovci

TUE—5-2-2017

Quicksand

Book Talk with Malin Persson Giolito

THU—5-4-2017

Out of the Blue: New Short Fiction from Iceland

Book Talk with Helen Mitsios

TUE—5-9-2017**Independent Paths: Finnish Women Artists, National Romanticism, and Early Modernism**

Lecture with Janet Rauscher

TUE—6-20-2017**Agon at Sixty**

Symposium with the New York Review of Books Foundation

MON—6-26-2017**KIDS & FAMILIES**

Scandinavia House features regular programs for children and families, including weekly access to the Heimbold Family Children's Playing and Learning Center, a colorful, welcoming environment where children and their caregivers can learn about the history and culture of Scandinavia through books, toys, costumes, and workshops. Other children's programs celebrated Nordic heritage and culture through music, films, performances, and interactive workshops.



—HEIMBOLD FAMILY CHILDREN'S CENTER—PHOTO BY LINDA HAGLUND/ASF

Wednesday Workshops**WEDNESDAYS—Ongoing****Puppet Playtime****THURSDAYS—Ongoing****Saturday Morning Storytelling**

With the Hans Christian Andersen Storytellers

SATURDAYS—Ongoing**Scandinavian Sing-Along with Vibe Normann****SATURDAYS—Ongoing through Spring 2017****Capturing the Art of Mystery: Exhibition Workshops****SATURDAYS—Ongoing through Spring 2016****The Wink of an Eye with KolKo Ink****SAT—9-26-2015****Scandinavian Christmas Workshops****SAT—12-5-2015, 12-3-2016 & 12-2-2017****Knitting Workshop: "Lopi" Sweater in a Week****SAT—1-23, 1-30 & WED—1-27-2016****Fauna and Me**

With Minna Krook Dans

SAT—1-23-2016

—FAUNA AND ME—PHOTO BY MICHAEL WEST

New York International Children's Festival**SAT—3-15 & 3-12-2016****Knitting Workshops with Arne and Carlos****SAT—9-10 & TUE—9-13-2016****Borrowed Time: Workshop with Ásthildur B. Jónsdóttir****SAT—10-15-2016****Over Sea & Underwater: Exhibition Workshops****SAT—10-22, 10-29, 11-5, & 11-12-2016****Saint Lucia Workshops****SAT—12-10-2016 & SAT—12-16-2017****Borrowed Time: Community Adventure Play Experience****SAT—2-11-2017****SCANDINAVIA HOUSE PROGRAM FUNDS**

The following funds, held by the ASF on a long-term basis, provide support for Scandinavia House programs:

The Louise and Karl Andren Fund for Musical Performance • The Bonnier Family Fund for Contemporary Art • The Victor Borge Hall Endowment Fund • The Curtis L. Carlson Distinguished Lecture Series Fund • The Lynn Carter Fund • The Centennial/Second Century Fund • The Edith Coulter Fund • Dunard Fund USA • The Heimbold Family Children's Playing and Learning Center Fund • The Icelandic Cultural Fund • The F. Donald Kenney Fund for Visual Arts • The Elle Leppälä Kronquist from Kuru, Finland, and William Kronquist from Narpes, Finland, and Dr. Laura Kronquist Mesaros Memorial Endowment Fund • Asbjørn Lunde Fund in Memory of Karl and Elisa Lunde • The Norwegian Centennial Cultural Fund • The Nordic Investment Bank Fund • The Barbro Osher Pro Suecia Foundation Young Artists Performance Endowment Fund • The Philip W. Pfeifer III Fund • The Hilppa Roby Fund for Finnish Cultural and Educational Programs at Scandinava House

AWARDS & PRIZES

ASF GOLD MEDAL

The American-Scandinavian Foundation's Gold Medal recognizes persons or institutions for outstanding achievement in the promotion of the objectives of the Foundation. Throughout the course of this report the Gold Medal was awarded to a distinguished individual.

In 2017, the ASF Gold Medal was awarded to John Kerry United States' 68th Secretary of State, in recognition of his outstanding efforts as Secretary of State to strengthen the bonds between the United States and the Nordic Countries, and for his inspiring leadership on Arctic matters during the U.S. Presidency of the Arctic Council.

AWARD FOR DISTINGUISHED PUBLIC SERVICE

The ASF Award for Distinguished Public Service recognizes individuals or organizations whose leadership in public or humanitarian service has significantly furthered understanding between the United States and the Nordic countries.

In 2016, the Award for Distinguished Public Service was awarded to Kristján T. Ragnarsson, M.D, for his work as an international leader in the field of rehabilitation medicine. Dr. Ragnarsson has been the Lucy G. Moses Professor and Chairman of the Department of Rehabilitation Medicine at Icahn School of Medicine at Mount Sinai in New York for thirty years. He has been an Executive Trustee of the American-Scandinavian Foundation since 1984; Vice Chairman for Iceland for many years; Deputy Chairman from 1999-2000; and Chairman of the Board from 2000-2003.

In 2017, the Award for Distinguished Public Service was awarded to Bengt Holmström, the 2016 Nobel Laureate in Economics and microeconomic theorist, who is best known for his research on the theory of contracting and incentives. He is a Paul A. Samuelson Professor of Economics at MIT where he was head of the Economics Department from 2003-2006, and where he holds a joint appointment with MIT's Sloan School of Management.

ASF NIELS POULSON AWARD

The Niels Poulson Award, named after ASF's founder, recognizes outstanding dedication and service by a Trustee to the Foundation, and support of its mission to promote educational, cultural, and professional exchanges between the U.S. and the Nordic countries: Denmark, Finland, Iceland, Norway, and Sweden.

In 2017, the Niels Poulson Award was awarded to Linda Nordberg, an ASF Executive Trustee since 1991. A member of the Executive Committee since 1994, she has served as Vice Chairman for the U.S. (2002-2006 and 2012-present) as well as Vice Chairman for Finland (2007-2011). She was a member of the 1993-1995 Long Range Planning Committee, and then chaired the next Long Range Planning Committee from 2004-2007.

ASF CULTURAL AWARD

The ASF Cultural Award pays tribute to individuals whose achievements in their fields have significantly furthered understanding between the United States and the Scandinavian countries. In 2016, this award was presented to Leif Ove Andsnes, a Norwegian pianist known throughout the world for his commanding technique and searching interpretations.

BIRGIT NILSSON AWARD

The Birgit Nilsson Award was established in 1988 on the 350th anniversary of New Sweden, the first Swedish settlement in the U.S. It was endowed through the proceeds of a gala concert in April of that year honoring the legendary Swedish soprano Birgit Nilsson. It is now awarded to a finalist in the Metropolitan Opera National Council Auditions.

Mezzo-soprano Emily D'Angelo was the recipient of the 2016 Birgit Nilsson Award and Kyle van Schoonhoven was the recipient of the 2017 Award.

ASF TRANSLATION PRIZES

The ASF Translation Prizes are the only prizes awarded regularly in the U.S. for translation into English of Nordic literature. Established in 1980, these awards recognize outstanding translation of prose or poetry by Nordic authors born after 1800. Through its annual competitions, ASF has recognized outstanding work by more than 50 translators.

In 2015, Philip Roughton (Reykjavik, Iceland) was awarded the Nadia Christensen Prize for his translation of *Wayward Heroes (Gerpla)* by Icelandic author Halldór Kiljan Laxness. In 2016, Marcus Bror Cederström (Madison, WI) was awarded the Leif and Inger Sjöberg Award for his translation of *Rain & Thunder (Regn och åska)* by Swedish author Håkan Lindquist.



PUBLICATIONS

SCANDINAVIAN REVIEW

ASF's flagship publication is *Scandinavian Review*, an illustrated journal that presents many aspects of life and culture in the Nordic countries, through articles on contemporary and historical issues as well as on new developments in the region. Published continuously since 1913, *Scandinavian Review* also presents current exhibitions at Scandinavia House, excerpts from the winning entries in ASF's annual Translation Prize competition, and a New Nordic Book Tips section. Three issues were published in each of the last two fiscal years.

Summer 2015

Ingrid Bergman at 100 was the cover feature in this issue, which looked back at themes in the actress's extraordinary career. Other articles looked at the Nordic Council's ways of facilitating cooperation among the Nordic countries; the Norwegian opera legend Kirsten Flagstad; and the annual Sami Easter festival in Kautokeino, Norway. It also presented the exhibition at Scandinavia House of works by Danish painter Vilhelm Hammershøi.

Autumn 2015

The cover story in this issue celebrated two of Scandinavia's most important composers: Carl Nielsen and Jean Sibelius, on the joint 150th anniversary of their births. The issue also looked at the 14 Scandinavians who have received the Nobel Prize in Literature; the promise and peril of methane in the Arctic; and the waning influence of the Social Democratic parties in Scandinavia.

Spring 2016

Subjects in the Spring issue ranged from how Copenhagen is preparing for climate change, to the history and influence of Danelaw in Viking England, to the long and distinguished career of Swedish actor Max

von Sydow. It also featured the exhibition *Another North: Landscape Reimagined*, with works of six contemporary Nordic artists at Scandinavia House.

Summer 2016

Individuals celebrated in this issue included Finnish-American architect Eero Saarinen, in a portrait by his son; the Swedish-born weaver Helena Hernmarck; the father of the outboard motor, Ole Evinrude from Norway; and Tycho Brahe, the pioneering 16th-century Danish astronomer. The issue also included a feature on the energy self-sufficient Danish island of Samsø.

Autumn 2016

Two articles looked at unique ways that Scandinavia is using its natural resources: Iceland, by pioneering the permanent storage of carbon dioxide in volcanic rock; and Norway, as home to the International Seed Bank, housed in a frozen mountain in the Svalbard archipelago. The issue also examined construction and design secrets of Viking ships and looked at the Finnish national epic, *The Kalevala*.

Spring 2017

ASF's salute to Finland on its Centennial as an independent state included a look back at the last 100 years by a noted historian, along with a special presentation on the exhibition, *Independent Visions: Helene Schjerfbeck and her Contemporaries from the Collection of Ateneum, Finnish National Gallery*, then on view at Scandinavia House. The issue also examined Norway's oil wealth and its nearly \$1-trillion-dollar government pension fund, and the life of Danish author Isak Dinesen.

SCAN

The American-Scandinavian Foundation also publishes a quarterly newsletter, *SCAN*, which reports on ASF's activities and programs, along with news from the Nordic region and Scandinavian events throughout the United States.

ASF SPRING GALA



—ASF SPRING GALA 2016—IMAGE BY CHRISTINE BUTLER/ASF

SPRING GALA 2016

Renowned Norwegian pianist Leif Ove Andsnes and Dr. Kristján Ragnarsson were honored by the American-Scandinavian Foundation (ASF) at its annual Spring Gala Dinner on May 18, 2016 at the Waldorf Astoria in New York City.

The Honorable Charles and Mrs. Monika Heimbold served as the Gala Chairs for the event. Gala Vice Chairs were Inger G. and William B. Ginsberg and Laureen and Ragnar Meyer-Knutsen. Corporate Vice Chairs were Niels Jacobsen, Chairman, Össur hf., and Jón Sigurðsson, President & CEO, Össur hf. Ambassadors and Consul Generals of the Nordic countries were in attendance as well as a number of prominent arts patrons and business leaders.



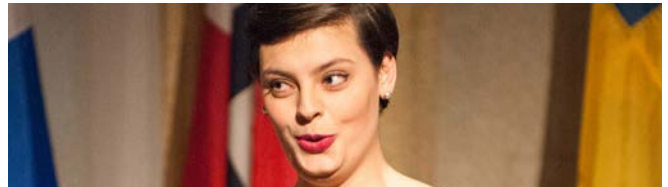
—LEFT TO RIGHT: EDWARD P. GALLAGHER, LEIF OVE ANDSNES, MONIKA HEIMBOLD, BENTE FRANTZ, KRISTJÁN T. RAGNARSSON, AND STEVEN B. PERI—IMAGE BY CHRISTINE BUTLER/ASF

Commenting on the evening, Edward Gallagher, ASF President and CEO, said he “takes great pleasure in saluting renowned pianist Leif Ove Andsnes who has been a true friend of the Foundation and performed several times at Scandinavia House, as well as honoring Dr. Kristján Ragnarsson who led the Foundation most capably as Chairman of the Board for four years during the critical period when we opened Scandinavia House.”

Alan Gilbert, New York Philharmonic Music Director, presented the ASF Cultural Award to Leif Ove Andsnes, a Norwegian pianist known throughout the world for his commanding technique and searching interpretations.

A highlight of the evening was a spontaneous performance by Andsnes to express his appreciation.

The Foundation also presented its Distinguished Public Service Award to Dr. Ragnarsson. A native of Iceland, Dr. Ragnarsson is one of the nation’s leaders in rehabilitative medicine and many of his grateful patients were in attendance at the gala.



—EMILY D'ANGELO, MEZZO-SOPRANO, BIRGIT NILSSON AWARDEE—IMAGE BY CHRISTINE BUTLER/ASF

This elegant black-tie evening commenced with a cocktail reception, followed by dinner and dancing to the Hank Lane Music. Highlights of the evening included a special performance by Mezzo-soprano Emily D'Angelo, the 2016 recipient of ASF's Birgit Nilsson Award, as well as an impromptu performance by Leif Ove Andsnes.



—ASF CULTURAL AWARD RECIPIENT LEIF OVE ANDSNES WITH ALAN GILBERT, MUSIC DIRECTOR, NY PHILHARMONIC—IMAGE BY CHRISTINE BUTLER/ASF

Gala guests and supporters included Ambassador John Loeb, Sophie and Peter Herzig, Ambassador Michael Wood, Ambassador Edward Elson, Thórunn Wathne, Carl Gustaf Ehrnrooth, Craig Dykers, Inger McCabe Elliott, and Helen Marx.



—ASF SPRING GALA 2017—IMAGE BY CHRISTINE BUTLER/ASF

SPRING GALA 2017

Honorees at the American-Scandinavian Foundation's (ASF) annual Spring Gala Dinner on May 11 at the Metropolitan Club included the 38th Secretary of State, The Honorable John F. Kerry (ASF Gold Award), Nobel Laureate Dr. Bengt Holmström (ASF Award for Distinguished Public Service) and Ms. Linda Nordberg (The ASF Niels Poulson Award).

The Honorable Charles and Mrs. Monika Heimbold served as the Gala Chairs for the event. Gala Vice Chairs were Carl Gustaf Ehrnrooth, Inger G. and William B. Ginsberg, Kristina Kittilsen and Steve Weller, Liisa and Jorma Ollila and The Nadia and Jacob Stolt-Nielsen Benevolent Fund. Corporate Vice Chair was Klaus Cawén of KONE Corporation.



—LEFT TO RIGHT: STEVEN B. PERI, CARL GUSTAF EHRNROOTH, MAIRE GULLICHSEN, KRISTINA R. KITILSEN, STEVE WELLER, EDWARD P. GALLAGHER—IMAGE BY CHRISTINE BUTLER/ASF

Ambassadors and Consul Generals of the Nordic countries were in attendance as well as a number of prominent Nordic business leaders.

The Hon. Barbara Barrett, former U.S. Ambassador to Finland, kicked off the evening; a tribute to Finland's centenary, with recollections of her time in Finland followed by taped remarks from H.E. Sauli Niinistö, President of Finland.

The Hon. Azita Raji, former U.S. Ambassador to Sweden, presented the ASF Gold Award to The Hon. John F. Kerry for his lifetime of public service and his work on a wide range of international issues, including nuclear proliferation, climate change and humanitarian crises.

Jorma Ollila, an Overseas Advisory Trustee of ASF since 1994 and currently Chairman of Outokumpu, presented the ASF Award for Distinguished Public Service to Finnish Nobel Laureate, Dr. Bengt Holmström.



—JORMA OLLILA AND DR. BENGT HOLMSTRÖM—IMAGE BY CHRISTINE BUTLER/ASF

The first ASF Niels Poulson Award, recognizing outstanding dedication and service by a member of the Board of Trustees, was awarded by fellow trustee and Gala Chair, Monika Heimbold, to Ms. Linda Nordberg, an Executive Trustee of ASF since 1991, as well as former Vice-Chairman for the US and Vice-Chairman for Finland and an active chair of several board committees.

After the awards ceremony, guests enjoyed dancing to Vince Giordano and the Nighthawks.

The ASF is extremely appreciative to all who supported and attended this wonderful event.



—LEFT TO RIGHT: EDWARD P. GALLAGHER, MONIKA HEIMBOLD, DR. BENGT HOLMSTRÖM, BENTE FRANTZ, THE HONORABLE JOHN F. KERRY, LINDA NORDBERG, HON. AZITA RAJI—IMAGE BY

ASF ANNUAL DONOR SUPPORT

The American-Scandinavian Foundation is grateful to the many individuals, corporations, and foundations that have generously contributed financial and in-kind support to the Foundation. These gifts ensure that the ASF will continue to promote international understanding through education and cultural exchange between the United States and the five Nordic nations. This list of donors reflects gifts and pledges made to the Foundation during the fiscal year ending June 30, 2017.

PRESIDENT'S CIRCLE

\$100,000 and Above

Margaret A. Cargill
Philanthropies

Jane and Aatos Erkkö
Foundation

Hon. Charles A. and Mrs.
Monika Heimbold / The
Heimbold Foundation

Birgit Faber Morse

\$50,000 and Above

Norway House
Foundation

The Barbro Osher Pro
Suecia Foundation

Scandinavian Seminar

LEADERS

\$25,000 and Above

DNB Bank ASA

Carl Gustaf Ehrnrooth

Inger G. and William B.
Ginsberg

Kristina Kittilsen and
Steve Weller

Liisa and Jorma Ollila

Starr Foundation

The Nadia and Jacob
Stolt-Nielsen Benevolent
Fund

The G. Unger Vetlesen
Foundation

PATRONS

\$15,000 and Above

Laureen and Ragnar
Meyer-Knutsen

Nordea Bank AB

SPONSORS

\$10,000 and Above

Andersen Family Trust
/ Estate of Marta
Andersen

Alpo F. and Marjorie
Crane / The Raymond
E. & Ellen F. Crane
Foundation

Danske Markets Inc.

Anders Ekernäs

Hon. and Mrs. Edward E.
Elson

The Per and Astrid
Heidenreich Family
Foundation

Mr. and Mrs. Trond S.
Jensen

KONE Corporation

Estate of Margaret B.
Nilsen

Linda and Gerald Nordberg

Roby Family Foundation /
Hilppa and Joe Roby

Statoil USA Holdings, Inc.

Stuart Family Foundation

WLHI/ARC

Hon. Michael M. and Judy
Wood

BENEFACTORS

\$5,000 and Above

Dr. Gudrun Aspelund

Christina Lang Assael /
The Assael Foundation

Charles K. Barbo

Craig and Barbara
Barrett Foundation

Ingrid I. Bernhard

Daphne L. Davidson and
Thomas Schwartz

Mrs. Brigitta Tyra Dill

Inger McCabe Elliott

Bente Svensen Frantz

Magnús Gustafsson

Holland & Knight

Lena Biörck Kaplan

Sigurdur O. Olafsson

Peri & Stewart LLC

Henrik Roos

Ellen C. L. Simmons

Sparebankstiftelsen DNB
NOR

CONTRIBUTORS

\$1,000 and Above

Mary Lou and Ira Alpert

The American-
Scandinavian Society of
New York

Solveig Andersen

Karl and Louise André

D. Euan and Angelica
Merete

Baird

Hon. Stuart A. Bernstein

Paula and Victor B. Borge

Anders C. Brag

Thomas C.T. Brokaw

Bård E. and Barbara
Bunaes /

The Bård and Barbara
Bunaes Family Fund

Mr. and Mrs. Edward O.
Carney

Hon. Charles E. Cobb,
Jr. / The Cobb Family
Foundation

Eggert Dagbjartsson and
Björg Bergsveinsdóttir

David E. R Dangoor

DeWitt Stern Group

Albert R. Dowden

Craig Dykers

Mr. and Mrs. Tony Evnin

Michael and Sanna
Feirstein / The Michael
and Sanna Feirstein
Family Foundation

Finlandia Foundation
National

Aili Flint

Edward P. Gallagher

Goldman Sachs

Cami Green-Hofstadter

Bruce N. Hadley, Jr. and
Inger E. Hadley

Hon. Charles S. Haight,
Jr.

The Per and Astrid
Heidenreich

Family Foundation

Flemming and Judy
Heilmann

Jens P. Heyerdahl, d.y.

Siggi Hilmarsson

The Hognander
Foundation

Christopher G. Kelly

Eugene and Barbara
Kokot

Leena K. Langeland

Hon. and Mrs. John L.
Loeb, Jr.

Jette Jacobsen Lord in
memory of Samuel Lord

Øivind Lorentzen, Jr.

CONTRIBUTORS (CONT.)

Asbjørn R. Lunde
 Helen W. Marx
 Michael S. Mathews
 Katherine C. Moore
 Connie P. Morgan
 M.E. Mousa
 Mr. and Mrs. Ólafur Ólafsson
 Mary Ellen and Richard Oldenburg
 Hon. and Mrs. Lyndon L. Olson, Jr.
 Dr. Rose-Marie G. Oster
 Steven B. and Berit Peri
 Dr. and Mrs. Kristján T. Ragnarsson
 Starr and Lennard Rambusch
 Sheila Johnson Robbins
 The Royal Norwegian Consulate General in New York
 Mary Salstrom and Brent Porter
 Marcus Siezing
 Gunnar H. Sigurgeirsson
 Henrik M. Steffensen
 Mr. and Mrs. James M. Stewart
 Bente Strong.
 SWEA/New Jersey
 Virginia and Thor Thors, Jr.
 Helgi and Marlene Tómasson
 Agnes Ahlander Turner and Jedediah H.K. Turner
 Astrid Tvetenstrand
 Ann-Christine Westerlund
 Arthur Zeckendorf

SUPPORTERS**\$500 and Above**

Charles B. and Deborah Anderson
 Tekla Back
 Dr. Carl S. Benson
 William Grant Callow II
 Giosetta Capriati
 Lynn Carter
 Madeleine Chapman
 Janet and James Crowle
 Yvonne Ericson Dryden
 Mr. and Mrs. Richard E. Feinbloom
 Suzanne Frederick
 Mr. and Mrs. Jaakko J. Haikala
 Theodore H. Jacobsen
 Inka Juslin
 Marjo Koivisto
 Kaarina Koskenalusta
 Laura J. Lofstad in memory of Nils H. Lofstad
 Allison and Dan London
 Kim Qvistorff
 Jaana Rehnstrom
 Jole and Frankie Shackelford
 Lisbeth Stern
 Tara Steinfeld
 Inger M. Tallaksen
 Laila Williamson
IN KIND GIFTS
 Svenska Kulturfonden / The Swedish Cultural Foundation in Finland
 Chicago Importing Company
 Finlandia Cheese

Flying Tiger Copenhagen
 GAMMA
 Norseland, Inc.
 Ope AS
 SAS,Scandinavian Airlines

CORPORATE MEMBERS

Corporate Members provide the critical support that ASF needs to continue our rich legacy of providing stimulating and diverse programming for all ages. We are extremely grateful and wish to thank the following corporations for their generous and ongoing support:

Corporate Patron

DNB Bank ASA

Corporate Sustainer

Danske Markets Inc.

Nordea Bank AB

Statoil USA Holdings, Inc.

Corporate Friend

DSV Air & Sea

Siggi's dairy



—LINDA HAGLUND, THE AMERICAN-SCANDINAVIAN FOUNDATION

SECOND CENTURY CAMPAIGN

Since its founding in 1910, the American-Scandinavian Foundation has promoted cultural and educational exchange between the United States and the five Nordic countries: Denmark, Finland, Iceland, Norway, and Sweden. Through fellowships, grants, internships, publications, exhibitions, and other cultural programs, the Foundation offers an unparalleled opportunity for cross-cultural conversations and experiences.

In recognition of its 100th Anniversary, ASF launched a Second Century Campaign in 2010. This campaign enables donors to provide a legacy of support for a wide range of projects, including fellowships and internships for young professionals and students; educational and cultural programs at Scandinavia House; and initiatives to enhance the capabilities of Scandinavia House and expand ASF's national and international outreach. By making a contribution to the Campaign, donors help to ensure that ASF remains a leading cultural non-profit for generations to come. A list of donors to the ASF Second Century Campaign, as of December 30, 2017 are listed below.

\$500,000 AND UP

Jane and Aatos Erkko Foundation
 Hon. Charles and Monika Heimbold
 Barbro Osher Pro Suecia Foundation
 The Nadia and Jacob Stolt-Nielsen Benevolent Fund / Lise Stolt-Nielsen and Mr. and Mrs. Jacob Stolt-Nielsen

\$250,000 TO \$499,999

DNB Bank ASA
 Inger G. and William B. Ginsberg

\$100,000 TO \$249,999

Alcoa Foundation
 Pontus Bonnier
 Hon. and Mrs. Edward E. Elson
 The Hognander Family Foundation
 Lena and Gilbert Kaplan
 Asbjørn R. Lunde
 A.P. Møller Relief Foundation/Ane Mærsk Mc-Kinney Uggla
 The Roby Foundation / Hilppa and Joe Roby
 SAS Scandinavian Airlines
 Björn Wahlroos

\$25,000 TO \$99,999

Bård E. Bunaes
 Daphne L. Davidson and Thomas R. Schwartz – in memory of Arthur O. and Corinne Davidson
 Trond S. Jensen
 Linda and H. Gerald Nordberg
 Bernt Reitan

\$10,000 TO \$24,999

Anders Brag
 Alpo Franssila Crane
 Sven Anders Ekernäs
 Inger McCabe Elliott
 Stig Høst
 John S. and James L. Knight Foundation
 Earle I. Mack Foundation, Inc./Carol D. Mack
 Richard E. Oldenburg
 Hon. Lyndon L. Olson, Jr.
 Chris and Sally Sonne
 Robert Willumstad

\$5,000 TO \$9,999

Hon. William McC. Blair, Jr.
 Bernt O. Bodal
 Bente Svensen Frantz
 Edward P. Gallagher
 Hon. Charles S. Haight, III
 Flemming and Judy Heilmann
 Kaarina Koskenalusta
 Øivind Lorentzen III
 Steven B. Peri, Esq.
 Martin E. Segal, in honor of Edward P. Gallagher
 James M. Stewart
 Hon. and Mrs. Robert D. Stuart
 Arthur and Constance Zeckendorf Foundation

\$500 TO \$4,999

Karl and Louise Andrén
 Victor B. and Paula Borge
 William Grant Callow, II
 Lynn Carter
 Hon. Charles E. Cobb, Jr.
 Birgitta T. Dill
 Richard and Toni Feinbloom
 Michael and Sanna Feinstein
 Aili and Austin Flint
 Allan W. and Judy Fulkerson
 Henry P. Godfrey and Ginger Schnaper
 Magnús Gústafsson
 Nils Hasselmo
 Niels W. Johnsen
 Eugene Kokot, Esq.
 Peter F. Krogh
 Øivind Lorentzen, Jr.
 Helen W. Marx
 Michael Mathews
 Morten Nicolaisen
 Dr. Rose-Marie G. Oster
 Kristján T. Ragnarsson, M.D.
 Lennard Rambusch, Esq.
 Sheila Johnson Robbins
 Inger Tallaksen
 Virginia and Thor Thors, Jr.
 Göran Thorstensson
 Helgi Tómasson
 Jón Tómasson
 Joan M. Warburg

CENTENNIAL EXHIBITION SUPPORT

General of Finland, New York
 Consulate General of Sweden, New York / David E.R.
 Dangoor
 Finnair Cargo
 Fritt Ord Foundation
 Furthermore: A Program of the J.M. Kaplan Fund
 Icelandair Cargo
 Robert Lehman Foundation, Inc.
 Hon. John L. Loeb, Jr.
 Nordic Culture Fund / Nordisk
 Kulturfond
 Barbro Osher Pro Suecia Foundation
 Robert and Joyce Menschel Family Foundation
 Royal Danish Consulate General, New York
 Royal Norwegian Consulate General, New York

ADDITIONAL WAYS TO SUPPORT ASF

The American-Scandinavian Foundation thanks our supporters and invites you to join us! Annual contributions help ASF to sustain its century-long mission to promote international understanding through educational and cultural exchange between the United States and Denmark, Finland, Iceland, Norway, and Sweden.

Cash

Writing a check is the simplest way to make a gift to ASF. For income tax purposes, the gift is deductible to the extent provided by the law.

Pledges

We ask that all annual pledges be fulfilled by the close of our fiscal year, which is June 30. Pledges to the Second Century Fund may be paid over several years.

Matching Gifts

If you, or your spouse, are affiliated with one of the many matching gift companies, you can double or even triple the value of your annual gift. Please check with your company's Human Resources office—it will make a difference.

Gifts of Securities

Gifts of appreciated securities are always welcome and may offer significant tax advantages to the donor.

Planned Gifts

There are several ways to make planned gifts to ASF and obtain tax benefits of charitable giving. ASF welcomes reviewing planned giving alternatives and approaches with you.

For more information on ways to give to ASF, how to transfer stock, or discuss planned giving, please email dev@amscan.org or call 212-779-3587.

MEMBERSHIP



—SCANDINAVIA HOUSE GALLERIES—IMAGE BY BFA PHOTOS

ASF's Membership program provides individuals with opportunities to discover the rich legacy of Scandinavian arts, culture, and thought, while providing vital financial support to the Foundation. The Foundation currently has more than over 4,000 members and supporters throughout the U.S. and around the world.

There are many great benefits offered to ASF members at all levels. Members receive yearly subscriptions to ASF's lively and informative journal, *Scandinavian Review*, as well as the membership newsletter, SCAN. Members in the greater New York region and those visiting the area are encouraged to visit Scandinavia House. Their membership gives them free admission to exhibitions; reduced admission to all films, lectures, concerts, and children's programs; discounts in the Shop and Smörgås Chef restaurant; and invitations to special member events such as exhibition previews, gallery tours, and the annual Holiday Party. In addition, members with a Children's Center Pass receive access to The Heimbold Family Children's Playing and Learning Center.

ASF is grateful to its many members whose support helps make possible the Foundation's many educational and cultural programs. It offers special thanks to those members listed below whose category of membership (current as of June 30, 2017) is at the Sustainer level or above.

BENEFACTOR

Solveig Andersen
 Nelson Blitz
 Mrs. Birgitta Tyra Dill
 Bruce N. Hadley, Jr. and Inger E. Hadley
 George and Kerstin Trowbridge
 Mr. and Mrs. Jedediah H. K. Turner

PATRON

Gudrun Aspelund
 Lars and Diana Bergquist
 Henry P. Godfrey and Ginger Schnaper
 James Guiry
 Kristina Kittilsen
 Donald and Elizabeth Kramer
 Terje Lande and Mary Zamore
 Lance and Marjorie Lindblom
 Asbjørn Lunde
 Lance Nelson
 Marcus Siezing
 Daniel and Ellen Strickler
 Joan Templeton

SUSTAINER

Benjamin Bankson
 Karin J. Barkhorn, Esq.
 Reiko Baum
 Graeme Birchall
 Michelle Depew
 Camille J. Douglas
 Mark C. Gasbarra
 Fredrick L. Johnson
 Christopher G. Kelly
 Alice La Prella
 Maury Newburger
 Carrin M. Patman
 Bente L. Strong
 Professor Henry and Mrs. Solidelle Wasser

STAFF



—ASF STAFF HOLIDAY DINNER 2017

Full time and office staff of the American-Scandinavian Foundation as of January 1, 2018

Edward P. Gallagher

President and Chief Executive Officer

Lynn Carter

Senior Advisor and Secretary to the Board

Jeff Clayborn

Director of Security and Fire Safety

Yvonne Ericson

Visitor Services Coordinator

Lori Fredrickson

Communications and Outreach Manager

Carl Fritscher

Interim Director of Fellowships and Grants

David Gonzalez

Building Superintendent

Jennifer Hutzell

Communications and Outreach Assistant

Nancy Lee

Office Coordinator

Victoria McGann

Scandinavia House Manager

Stephen McGrath

Director of Finance and Administration

Hertta Nilsson

Children's Center Supervisor

Marie-José O'Keefe

Special Event Coordinator

Tatiana Pashman

Director of Internships & Training

Kyle Reinhart

Manager of Educational and Cultural Programs

Elizabeth Scheel

Manager of Development and External Affairs

Emily Stoddart

Manager of Exhibitions and Public Programs

Janice Thaler

Bookkeeper

Zoe Vayer

Executive Assistant to the President

Erin Wheeler

Manager of Membership

Laura Winterhalter

Manager of the Shop at Scandinavia House

Sally Yerkovich

Director of Special Programs

FINANCIAL STATEMENTS



—SCANDINAVIA HOUSE—IMAGE BY LINDA HAGLUND/ASF

THE AMERICAN-SCANDINAVIAN FOUNDATION STATEMENT OF FINANCIAL POSITION 6-30-2017 & 6-30-2016

Assets	2017	2016
Cash & Cash Equivalents	\$526,161	\$354,592
Investments, at fair value	33,762,186	31,792,463
Other Receivables	140,932	161,007
Inventory	128,703	144,166
Prepaid Expenses	75,562	60,866
Fixed Assets	15,166,565	15,685,956
Total Assets	\$49,800,109	\$48,199,050

Liabilities & Net Assets

Liabilities:

Accounts payable & accrued expenses	\$183,520	\$266,039
Deferred revenues	42,136	41,867
Grants payable	807,127	672,559
Total Liabilities	1,032,783	980,465

Net Assets:

Operating	1,233,689	894,214
Board designated	5,691,191	5,517,078
Invested in fixed assets	15,166,565	15,685,956
Total Unrestricted	22,091,445	22,097,248
Temporarily restricted	18,076,846	16,530,252
Permanently restricted	8,599,035	8,591,085
Total Net Assets	48,767,326	47,218,585
Total Liabilities & Net Assets	\$49,800,109	\$48,199,050

The complete financial statements for the periods ended June 30, 2016 and June 30, 2017, as audited by Loeb & Troper, are available from the ASF.

THE AMERICAN-SCANDINAVIAN FOUNDATION
STATEMENT OF ACTIVITIES
YEAR ENDED JUNE 30, 2017

		Unrestricted	Temporarily Restricted	Permanently Restricted	<u>Total 2017</u>
Revenues:					
Contributions		\$541,912	\$501,199		\$1,043,111
Special events	\$328,750				
<i>Less direct cost of special events</i>	(95,666)	233,084			233,084
Membership dues		261,678			261,678
Investment return designated for					
Current operations		367,988	898,200		1,266,188
Exchange program fees		173,400			173,400
Advertising and publishing		11,156			11,156
Ancillary service fees		739,448			739,448
Gift shop	459,354				
<i>Less cost of goods sold</i>	(234,747)	224,607			224,607
Program fees		82,040			82,040
Net assets released from restrictions		1,367,943	(1,367,943)		
Total revenues and other support		4,003,256	31,456		4,034,712
Operating Expenses:					
Program services					
Training and fellowship programs		1,190,356			1,190,356
Membership		114,490			114,490
Public Programs		1,905,283			1,905,283
Publications		112,418			112,418
Total programs services		3,322,556			3,322,556
Supporting Services					
Management and general		470,354			470,354
Fundraising		209,438			209,438
Total supporting services		679,792			679,792
Total operating expenses		4,002,348			4,002,348
Results of operations		908	\$31,456		32,364
Other Changes in Net Assets:					
Investment return in excess of amounts					
Designated for current operations		512,680	1,257,921		1,770,601
Contributions for long-term investment			301,824	\$7,950	309,774
Depreciation expense		(563,998)			(563,998)
Net assets released for fixed asset acquisitions		44,607	(44,607)		
Change in net assets		(5,803)	1,546,594	7,950	1,548,741
Net assets - beginning of year		22,097,248	16,530,252	8,591,085	47,218,585
Net assets - end of year		22,091,445	18,076,846	8,599,035	48,767,326

FACILITIES & SERVICES



—SMÖRGÅS CHEF

SMÖRGÅS CHEF

Smörgås Chef has managed the restaurant at Scandinavia House since September 2008 as one of its main New York City locations. Serving fine Scandinavian cuisine, Smörgås Chef offers lunch, dinner, and weekend brunch, along with special promotions related to ASF films and concerts. With an authentic custom-designed birch tree installation at its center and café tables and colorful chairs designed by Arne Jacobsen, Smörgås Chef provides diners with a vivid introduction to Nordic fare.



—VOLVO HALL

EVENT VENUE

While serving as a lively cultural center for Nordic programs presented by The American-Scandinavian Foundation, Scandinavia House is also a popular venue for events hosted by other nonprofits, government offices, corporations, and individuals. These include meetings, conferences, seminars, receptions, luncheons, dinners, film screenings, concerts, and weddings. The revenue generated by rentals provides important support for the operations of Scandinavia House and the ASF.

THE SHOP @ SCANDINAVIA HOUSE

The Shop @ Scandinavia House, one of New York's best sources of imported Nordic goods, introduces visitors to Scandinavian design and style. Showcasing modern designers from Scandinavia as well as established legends, The Shop offers distinctive home design and tableware, art glass, textiles, luxurious sweaters and accessories, unique jewelry, handmade clogs, and children's items, along with favorite Scandinavian foods and confections.



—THE SHOP @ SCANDINAVIA HOUSE—IMAGE BY LINDA HAGLUND/ASF

COOPERATING GROUPS



—OLD TOWN, STOCKHOLM, SWEDEN—IMAGE COURTESY OF IMAGE BANK SWEDEN

COOPERATING INSTITUTIONS & OFFICES

ASF's cooperating offices in each of the Nordic countries provide invaluable assistance to and collaboration with ASF in a number of areas of educational exchange, primarily the Fellowships & Grants and Internships & Training programs. The Foundation acknowledges with gratitude its long-standing affiliation with these organizations.

The Denmark-America Foundation

Fondenens Hus
Otto Mønstedts Gade 5, København V, Denmark
www.wemakeithappen.dk

The League of Finnish-American Societies

Suomi-Amerikka Yhdistysten Liitto
Eteläranta 6 A 8, 3. krs 00130 Helsinki, Finland
samsuomi.fi/apurahat

The Icelandic-American Society

Íslensk-ameríska félagið
PO Box 320, IS-121 Reykjavik, Iceland
www.iceam.is

The Norway-America Association

Norge-Amerika Foreningen
Rådhusgatan 23B, N-0158 Oslo 2, Norway
www.noram.no

The Sweden-America Foundation

Sverige-Amerika Stiftelsen
Box 5280, S-102 46 Stockholm, Sweden
www.sweamfo.se

ASF also works closely with governmental organizations in Finland and Sweden on its training program. The Foundation is grateful for the important role they play in providing internships and training opportunities for young professionals and students.

Centre for International Mobility

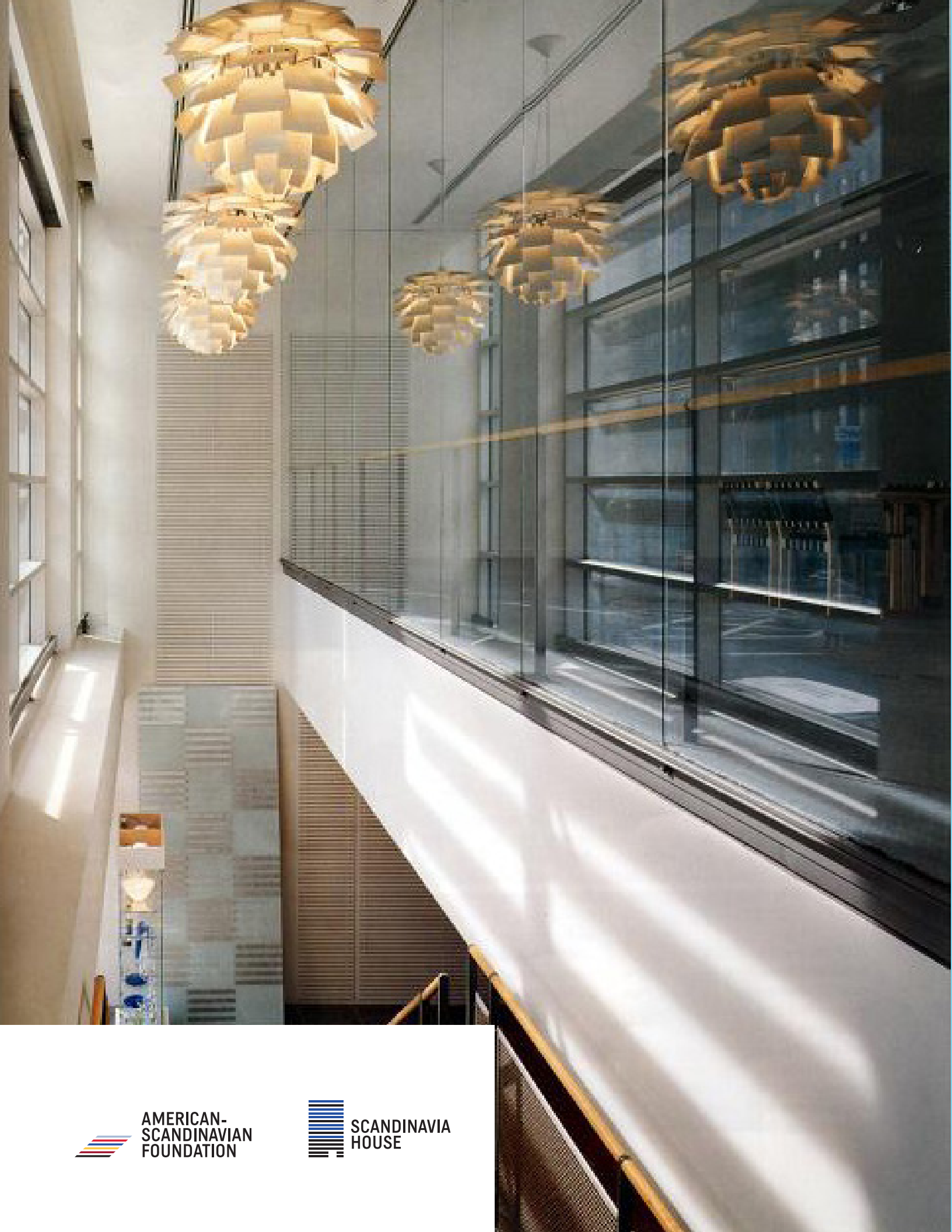
Kansainvälisen henkilövaihdon keskus
PL 343, SF-005 31 Helsinki, Finland

International Employment Office

Arbetsförmedlingen-Utland
International Practical Training
Box 2250, S-403 14 Göteborg, Sweden

ASSOCIATE GROUPS

ASF is affiliated with 15 independent regional groups across the U.S. These groups sponsor programs and activities for their local constituents, many of whom are also members of ASF: The American Scandinavian Society of New York; New York, NY; The American-Scandinavian Association of the National Capitol Area; Bethesda, MD; Friends of Scandinavia; Raleigh, NC; The American-Scandinavian Foundation - Western Carolinas Associates; Hendersonville, NC; Scandinavian-American Foundation of Georgia; Decatur, GA; The Scandinavian Society of Greater Cincinnati; Cincinnati, OH; Scandinavian Club of Columbus; Columbus, OH; Northwest Iowa Associates of The American-Scandinavian Foundation; Storm Lake, IA; Central Iowa Associates of The American-Scandinavian Foundation; West Des Moines, IA; Twin Cities Associates of The American-Scandinavian Foundation; Northfield, MN; American-Scandinavian Association at Augustana College; Rock Island, IL; American-Scandinavian Foundation Texas Associates; Austin, TX; The American-Scandinavian Foundation of Los Angeles; Los Angeles, CA; The American-Scandinavian Foundation of Santa Barbara; Santa Barbara, CA; The Scandinavian Heritage Foundation; Portland, OR.



AMERICAN-
SCANDINAVIAN
FOUNDATION



SCANDINAVIA
HOUSE