



# BI-ANNUAL REPORT— 2017-2019





# **AMERICAN-SCANDINAVIAN FOUNDATION BI-ANNUAL REPORT—**

**7-1-2017 TO 6-30-2019**

**The American-Scandinavian Foundation (ASF) serves as a vital educational and cultural link between the United States and the five Nordic countries: Denmark, Finland, Iceland, Norway, and Sweden. A publicly supported nonprofit organization, the Foundation fosters cultural understanding, provides a forum for the exchange of ideas, and sustains an extensive program of fellowships, grants, internships/training, publishing, and cultural events. Over 30,000 Scandinavians and Americans have participated in its exchange programs over the last century.**

**In October 2000, ASF inaugurated its headquarters, Scandinavia House: The Nordic Center in America, where it presents a broad range of public programs furthering its mission to reinforce the strong relationships between the United States and the Nordic nations, honoring their shared values and appreciating their differences.**

**PATRONS—2017-19**

H.M. Queen Margrethe II of Denmark  
H.E. Sauli Niinistö, President of Finland  
H.E. Guðni Th. Jóhannesson, President of Iceland  
H.M. King Harald V of Norway  
H.M. King Carl XVI Gustaf of Sweden

**HONORARY TRUSTEES—2017-19**

H.R.H. Princess Benedikte of Denmark  
H.E. Martti Ahtisaari, President of Finland, 1994-2000  
H.E. Vigdís Finnbogadóttir, President of Iceland, 1980-1996  
H.H. Princess Märtha Louise of Norway  
H.R.H. Crown Princess Victoria of Sweden

---

**OFFICERS—2017-19**

Steven B. Peri, Chair  
Eugene V. Kokot, Deputy Chair  
Edward P. Gallagher, President  
Henrik Steffensen, Vice Chair for Denmark  
Aili Flint, Vice Chair for Finland  
Kristjan T. Ragnarsson, MD, Vice Chair for Iceland  
Bente Svensen Frantz, Vice Chair for Norway  
Monika Heibold, Vice Chair for Sweden  
Linda Nordberg, Vice Chair for the United States  
Bård E. Bunaes, Treasurer  
Lynn Carter, Senior Advisor & Secretary to the Board

## A NOTE FROM THE PRESIDENT— EDWARD P. GALLAGHER

I am pleased to present this report which details the activities and accomplishments of the American-Scandinavian Foundation (ASF) during Fiscal Years 2018 and 2019 (July 1, 2017 - June 30, 2019).

These have been especially active and productive years for the ASF as we continued to pursue the mission that was set by our founders in 1911 — to increase international understanding through educational and cultural exchange.

During this two-year period, we awarded fellowships and grants to 118 scholars, students and artists, enabling them to pursue their research, studies, and creative endeavors abroad. In the same period, 33 public project grants were awarded to organizations in the US and the Nordic countries in support of exhibitions, concerts, festivals and other public programs.

A particular highlight of these years was the introduction of a new funding program focused on folk art and cultural traditions in the Upper Midwest. During Fiscal Years 2017 and 2018, fellowships were awarded to 26 artists, and public project grants were granted to 10 organizations.

Also in these two years, the ASF Internship and Training Program made it possible for nearly 300 young people from the Nordic countries to receive invaluable practical working experience in the United States.

Scandinavia House: The Nordic Center in America welcomed nearly 250,000 visitors during Fiscal Years 2018 and 2019, who came to attend concerts, screenings, lectures, children's programs, and other events, as well as to dine at our Smörgås Chef restaurant and shop in the Shop@Scandinavia House. Several outstanding exhibitions were presented at Scandinavia House during this period, including *The Experimental Self: Edvard Munch's Photography*, *LEGO® Bricks: A Celebration!*, *Light Lines: The Art of Jan Groth*, *Inger Johanne Grytting*, and *Thomas Pihl*, and *Nordic Impressions: Contemporary Art from Åland, Denmark, Finland, Greenland, Iceland, Norway, and Sweden*.

Other program highlights include film series presenting new Nordic cinema, the work of Ingmar Bergman, and Oscar Contenders from the Nordic and Baltic countries, as well as the popular Summer Jazz concert series and a number of concerts by internationally celebrated pianist Per Tengstrand.

The ASF journal, *Scandinavian Review*, continued to inform and entertain a readership throughout the U.S. and abroad with a wide range of articles on Nordic art, history, current affairs, and other topics. At the same time, [amscan.org](http://amscan.org) and [scandinaviahouse.org](http://scandinaviahouse.org) have been visited by tens of thousands of interested individuals throughout the two years.

As we look back at the accomplishments of 2018 and 2019, we must express gratitude to all those in the ASF community who helped to make these possible, notably the Trustees, the many generous donors and members, and most especially, the dedicated ASF staff.

Thank you to all!



# ASF BOARD OF TRUSTEES

AS OF 6-30-2019

## EXECUTIVE TRUSTEES

### Heidi Aakre

President, Equinor Pipelines LLC; Vice President, Asset Management Midstream, North America

### Emma Aer

Head of Region, USA, Reima

### Charles B. Anderson

Senior Vice President, SKULD North America, Inc.

### Gudrun Aspelund

M.D. /Chief of Pediatric Surgery, Maria Fareri Children's Hospital, Westchester Medical Center

### Sigríður Benediktsdóttir

Professor and Researcher, Yale University; Dean of Undergraduate studies at Jackson Institute for Global Affairs

### Charles K. Barbo

Partner, Catalyst Storage Partners LLC

### Victor B. Borge

Film Director

### Anders C.H. Brag

President, GARB Holdings LLC

### Bård E. Bunaes

President and CEO (ret.), GLOBAL Reinsurance Company of America; Board Chair, American-Scandinavian Foundation, 2006-2009

### W. Grant Callow

Attorney, Law Office of William Grant Callow; Honorary Danish Consul for Alaska

### David E.R. Dangoor

President Innoventive Partners, LLC; Vice Chairman, BioGaia AB

### Daphne L. Davidson

Chairman, Scandinavian Seminar; Attorney (private practice)

### Michelle V. Edelman

Founder and CEO, Traffic Creative Management

### Carl Gustaf

EhnroothPartner, Bentmind Ltd.

### Sven Anders Ekernäs

Chairman & CEO, Hillswick Asset Management

### Inger McCabe Elliott

President, IME/LTD

### Edward E. Elson

U.S. Ambassador to Denmark, 1993-1998

### Erkko Etula

Managing Director, Investment Strategy Group, Goldman Sachs

### Michael A. Feirstein

Former Vice President and Corporate Counsel, Prudential Financial, Inc.

### Aili Flint

Head of the Finnish Program (ret.), Columbia University

### Bente Svensen Frantz

Board Chair, American-Scandinavian Foundation, 2012-2015; Deputy Chair, 2009-2012, 2015-2018

### Edward P. Gallagher

President, American-Scandinavian Foundation, 1996- Present

### Inger Gundersen Ginsberg

### Magnus Gustafsson

Chairman of the Board, HBGrandi

### Monika Heibold, MSW

President, Heibold Foundation

### Siggi Hilmarrsson

Founder and CEO, siggi's dairy

### Anders Iversen

Managing Director, Danske Markets

### Trond S. Jensen

President, Sigurd Jensen & Co.; Owner, Chestnut Hill Farms; Honorary Consul General for Norway, Florida

### Lena Biörck Kaplan

President, American-Scandinavian Foundation 1989-1996

### Christopher G. Kelly

Partner, Holland & Knight

### Kristina Kittilsen

Former Director, US Institutional Equity Sales, Credit Suisse Securities LLC

### Erna Milukna Kojic, M.D.

Section Chief, Division of Infectious Diseases, Mount Sinai St Luke's and Mount Sinai West Hospitals

### Eugene V. Kokot, Esq.

Partner, Katsky Korins LLP, Deputy Board Chair, American-Scandinavian Foundation, 2018-19

### Terje Lande

Senior Vice President, AIG General Insurance

### Christina Lang Assael

Vice Chairman, The Assael Foundation

### Hon. John L. Loeb, Jr.

U.S. Ambassador to Denmark, 1981-1983; Chairman John L. Loeb Jr. Associates, Inc.

### Bertil P. Lundqvist

Executive VP and General Counsel, C.V. Starr & Co. and Starr Insurance Holdings

### Helen W. Marx

Honorary Consul for Finland, New Jersey

### Michael S. Mathews

Managing Director, Westgate Capital Co.

### Ragnar Meyer-Knutson

Founder, Sealift Inc.

### Linda Nordberg

Trustee, The Katonah Museum of Art

### Ólafur J. Ólafsson

Former Vice Chairman, Time Warner Digital Media

### Siggi Olafsson

Chief Executive Officer, Hikma Pharmaceuticals

### Lyndon L. Olson, Jr.

U.S. Ambassador to Sweden, 1997-2001; Chair, Hill + Knowlton Strategies, Europe and USA

### Barbro Osher

President, The Barbro Osher Pro Suecia Foundation; Chair, Bernard Osher Foundation; Honorary Consul General of Sweden, San Francisco

### Steven B. Peri

Attorney, Peri & Stewart; Chairman of the Board, American-Scandinavian Foundation, 2015-Present

### Kristján T. Ragnarsson

Lucy G. Moses Professor and Chairman (ret.), Department of Rehabilitation Medicine, Mount Sinai Medical Center; Board Chair, American-Scandinavian Foundation, 2000-2003

### Lennard K. Rambusch

Partner (ret.), Holland & Knight LLP

### Bernt Reitan

Executive Vice President, Alcoa (ret.); Group President, Alcoa Primary Products; Co-Chairman of the Board, American-Scandinavian Foundation, 2009-2012



**Henrik Roos**

Private Equity Investor &  
Board Member

**Marcus Siezing**

Director of Investments,  
Dillon Trust Company

**Tómas Már Sigurdsson**

Chief Operating Officer,  
Alcoa Global Primary  
Products, New York, NY

**Henrik Steffensen**

Executive Vice President,  
Nordea Bank, New York  
Branch

**Vibeke Steineger**

Board Member  
NORAM/Norway-  
America Association

**James M. Stewart****Lise Stolt-Nielsen****Bente Strong**

Brown Advisory

**Inger M. Tallaksen**

IMT Consulting

**Thor Thors, Jr.**

Vice President (ret.),  
United States Trust  
Company of New York

**Agnes Ahlander Turner**

Vice President, Marie B.  
Campbell Associates

**Liv Ullmann**

Actor/Director

**Rutger von Post**

Partner, Oliver Wyman

**Mads Wermelin**

Executive Vice President  
and General Manager,  
DNB North America  
Division

**Arthur Zeckendorf**

Co-Chairman, Brown  
Harris Stevens LLC Group

**ADVISORY  
TRUSTEES****Roger E. Anderson**

Managing Partner,  
Hamilton Capital  
Partners

**Karl G. Andrén**

Chairman and CEO (ret.),  
New York Cruise Lines, Inc.

**Barbara Barrett**

President & CEO,  
Triple Creek Ranch;  
U.S. Ambassador to  
Finland, 2008–2009

**Patricia G. Berman**

Professor of Art, Wellesley  
College; Professor II,  
University of Oslo

**Stuart A. Bernstein**

Chairman, Bernstein  
Companies; U.S.  
Ambassador to Denmark,  
2001–2005

**Charles E. Cobb, Jr.**

Chairman and CEO,  
Cobb Partners; U.S.  
Ambassador to Iceland,  
1989–1992

**Lars W. Colliander**

Berner Brothers, Inc

**Alpo Franssila Crane**

Private Investor

**Albert R. Dowden**

President and CEO  
(ret.), Volvo Group  
North America,  
Inc.; Board Chair,  
American-Scandinavian  
Foundation, 1995–2000

**Craig Dykers**

Co-Founder, Snøhetta

**Charles S. Haight, Jr.**

U.S. District Judge  
for the District of  
Connecticut; Board  
Chair, American-  
Scandinavian  
Foundation, 1971–1976

**Bengt Holmström**

Professor of Economics,  
Massachusetts Institute  
of Technology

**Kaarina Koskenalusta**

Partner, Global Initiatives  
Partners LLC

**Peter F. Krogh**

Dean Emeritus, Edmund  
A. Walsh School  
of Foreign Service,  
Georgetown University

**Øivind Lorentzen**

Jr., Board Chair,  
American-Scandinavian  
Foundation, 1988–1991

**Øivind Lorentzen, III**

CEO, Treehouse Partners  
Corp.

**Rose-Marie Oster**

Professor of Germanic  
Studies, University of  
Maryland

**Hilppa A.K. Roby**

Former Conference  
Manager, United Nations

**Marcus Samuelsson**

Chef, Restaurateur,  
and Co-Owner of Red  
Rooster, Harlem

**Robert Storr**

Former Dean, Yale School  
of Art

**Helgi Tómasson**

Artistic Director, San  
Francisco Ballet

**Thórunn Wathne****Torsten N. Wiesel**

President Emeritus, The  
Rockefeller University

**Michael M. Wood**

Chairman, Redwood  
Investments LLC; U.S.  
Ambassador to Sweden,  
2006–2009

**OVERSEAS ADVISORY  
TRUSTEES****Magnús Bjarnason**

Managing Partner, MAR  
Advisors, ICELAND

**Rune Bjerke**

President and CEO, DNB  
NOR AS, NORWAY

**Klaus Thomas Cawén**

Executive Vice President,  
KONE Corporation,  
FINLAND

**Orri Hauksson**

CEO, Síminn hf,  
ICELAND

**Jens P. Heyerdahl**

Former Group CEO, Orkla  
ASA, NORWAY

**Niels Jacobsen**

CEO, William Demant  
Invest A/S; former  
Chairman, LEGO A/S  
DENMARK

**Jonas Kleberg**

CEO, Soya Group,  
SWEDEN

**Jorma Ollila**

Chairman, Outokumpu,  
FINLAND

**Fritz Schur Chamberlain**

Consul General,  
DENMARK

**Nina Skage**

Director of Fundraising,  
Norwegian School of  
Economics, NORWAY

**Nadia Stolt-Nielsen**

NORWAY

**Ane Mærsk Mc-Kinney  
Uggla**

Vice Chairman of the  
Board, A.P. Møller-Mærsk  
A/S; Vice Chairman,  
A.P. Møller and Chastine  
Mc-Kinney Møller  
Foundation, DENMARK

**Björn Wahlroos**

President and CEO,  
Sampo plc., FINLAND

**Jacob Wallenberg**

Chairman, Investor AB,  
SWEDEN

**Henrik Wedell-  
Wedellsborg**

Partner, Bruun & Hjejle;  
Chamberlain, DENMARK

## FELLOWSHIPS & GRANTS



—ASF FELLOW ERIKA RUHL—IMAGE COURTESY OF ERIKA RUHL

For more than 100 years, the ASF Fellowships & Grants Program has awarded funds to Americans and Scandinavians engaged in study, research, or arts projects. The first ASF grants were made to three philologists in 1912 as one of the earliest programs of the newly established Foundation's mission to promote educational and cultural exchange between the U.S. and the Nordic countries. Since then, more than 7,500 scholars, researchers, policymakers, artists, and professionals have received support for their work in areas now as far-ranging as medicine and the sciences, economics and political history, the arts, and literature.

More than 115 new Scandinavian and American Fellows received financial support from ASF for study and research projects abroad throughout the two-year period of this report. During 2017–18, \$712,300 was awarded to 60 fellows from the U.S. and the Nordic countries; \$628,475 was awarded to 58 fellows in 2018–19. Fellowships and grants range between \$5,000 and \$23,000 and are awarded to graduate students, post-graduate scholars, professionals, and artists pursuing independent projects.

In 2017, ASF was pleased to announce two new grant programs to support Scandinavian folk arts and cultural traditions in the Upper Midwest (defined as North Dakota, South Dakota, Iowa, Minnesota, Wisconsin, and the Upper Peninsula of Michigan): Folk Arts Fellowships and Public Program/Community Project Grants. These programs recognize and celebrate the mastery of individual artists and practitioners, facilitate the cultivation of skills and understanding of Scandinavian traditions among younger generations, bring greater visibility to the arts, and highlight the importance of cultural expression to all of our lives. The programs further ASF's goal of celebrating and preserving Danish, Finnish, Icelandic, Norwegian, Sámi, and Swedish cultures throughout the U.S. During 2017–18,

\$84,100 was awarded in fellowships to ten artists and \$43,910 was awarded in grants to four public programs and community projects. During 2018–19, \$115,900 was awarded in fellowships to 16 artists; \$156,090 was awarded in grants to six public programs. All awards were supported by a grant from the Margaret A. Cargill Philanthropies.

ASF has over forty funds that it holds on a long-term basis, using the income to fund fellowships and grants, including:

- Mathilde Aas Memorial Fund • Carl G. and Rikke Fredriksen Barth Memorial Fund • John G. Bergquist Fellowship in Chemistry Fund • Bernadotte Fund • Sven and Ingrid Bernhard Fund • Crown Princess Märtha Friendship Fund • The Eugene and Siri Delafield Scholarship Fund • Jane and Aatos Erkko Fund • Finnish Fund • Former Fellows Fund • Icelandic Crafts Fund • Carl Olaf, Marie, and Katherine Elizabeth Johnson Fellowship Fund • Henrik Kauffmann Fund • King Haakon VII Birthday Fund • King Olav V 70th Birthday Fund • Helen Lee and Emil Lassen Fellowship Fund • Hans Knudsen Lorentzen Memorial Fund • Rev. Lars R. Lund Fund for Nordic Literature • Martha and Jack McFall Fund • The Peter and Birgit Faber Morse Fund • New Sweden '88 Cultural and Educational Fund • The Dr. Mary Jane Oestmann Fellowship Fund in the Sciences • Philip W. Pfeifer III Fund • Amanda E. Roleson Fund • Carl Sandburg Fund • Sather Fund • Leif and Inger Sjöberg Fund • Thor and Saimi Soderholm Fund • Carol and Hans Chr. Sonne Fellowship Fund • Margaret Sorensen Burke Fund • Sønsteby/Whist Fund • Håkon Björnström Steffanson Scholarship Fund/Sweden America Foundation • Håkon Björnström Steffanson Scholarship Fund/Uppsala University • Stolt-Nielsen Fund for Education • Alice and Corrin Strong Fund • Haakon Styri Fellowship Fund • Selma C. Swanson Fund • Thor Thors Memorial Fund • Thord-Gray Memorial Scholarship Fund • Saara and Björn Wahlroos Fellowship Fund • Marcus and Amalia Wallenberg Memorial Fund • Andrew E. and G. Norman Wigeland Fund • Charles K. Willey Memorial Fund.



## FELLOWS 2017 - 2018

### FROM DENMARK

**ANDERSEN,  
KATRINE**  
TO—Columbia  
University

MA-Directed Study,  
Journalism. Henrik  
Kauffmann Fund

### TO DENMARK

**BADON, SYLVIA**  
FROM—University of  
Washington  
TO—Aarhus University

Dissertation Research,  
Epidemiology.  
Scan|Design by  
Inger and Jens Bruun  
Foundation Fund

**BELANICH,  
JONATHAN**  
FROM—Mississippi  
State University  
TO—University of  
Copenhagen

Dissertation Research,  
Microbiology & Bio-  
computing. Amanda C.  
Roleson Fund

**BICK, EMILY**  
FROM—University of  
California, Davis  
TO—Aarhus University

Dissertation Research,  
Ecosystem Modeling.  
Amanda C. Roleson Fund

**HOPKINS, STEPHEN**  
FROM—Indiana  
University, Bloomington  
TO—University of  
Copenhagen, Dept. of  
Nordic Research and  
Arnarnaganaean Institute

Dissertation Research,  
Medieval Language and  
Literature. Amanda C.  
Roleson Fund

**JECK, ERIKA**  
FROM—University of  
Chicago  
TO—Saxo Institute  
at the University of  
Copenhagen

Dissertation Research,  
Ancient History. Amanda  
C. Roleson Fund

**WILKINSON, LYNN**  
FROM—University of  
Texas, Austin  
TO—Royal Library,  
Copenhagen and Library  
at the Danish Film  
Institute

Post-Doctoral Research,  
Comparative Literature.  
Amanda C. Roleson Fund

### FROM FINLAND

All candidates  
recommended by The  
League of Finnish-  
American Societies  
(Suomi-Amerikka  
Yhdistysten Liitto) in  
Helsinki

**KUITTINEN, NIINA**  
TO—University of  
California, Riverside

Dissertation Research,  
Aerosol Physics and  
Emission Studies. Finnish  
Fund

**TURPEINEN, JUHO  
KALEVA**  
TO—University of  
Michigan, Ann Arbor

Dissertation Research,  
Political Science. Finnish  
Fund

**VOGEL, PAUL**  
TO—University of  
Southern California

MFA-Directed Study,  
Film and Television  
Production. Finnish Fund

### TO FINLAND

**CONROY,  
CHRISTINA**  
FROM—Morehead State  
University  
TO—University of  
Helsinki

Post-Doctoral Research,  
Philosophy. The Jane  
and Aatos Erkko Fund

**GLACKIN,  
CARLOTTA**  
FROM—Beckman  
Research Institute of  
City of Hope  
TO—University of  
Helsinki

Post-Doctoral Research,  
Molecular Biology and  
Protein Structure. The  
Jane and Aatos Erkko  
Fund

**PUSHAW, BART**  
FROM—University of  
Maryland  
TO—Ateneum Art  
Museum, Finnish  
National Gallery, the  
Design Museum, the  
Helsinki City Museum  
& the Finnish State  
Archives

Dissertation Research,  
Art History. The Jane  
and Aatos Erkko Fund

**QUINN, CAROL**  
FROM—Towson  
University

Independent Research,  
Creative Writing  
(Poetry). The Jane and  
Aatos Erkko Fund

**RUHL, ERIKA**  
FROM—University at  
Buffalo, SUNY  
TO—University of Oulu

Dissertation Research,  
Anthropology/  
Archaeology. The Jane  
and Aatos Erkko Fund

**WEBB, STEPHEN**  
FROM—Roosevelt  
University  
TO—Sibelius Academy  
of the University of the Arts

Post-Baccalaureate  
Research, Music  
Composition. The Jane  
and Aatos Erkko Fund

### FROM ICELAND

All candidates  
recommended by the  
Icelandic-American  
Society (Íslensk-Ameríska  
Félagid), Reykjavik

**ADALBJÖRNSSON,  
TRYGGVI**  
TO—Columbia  
University

MA-Directed Study,  
Journalism. Thor Thors  
Memorial Fund

**EINARSDÓTTIR,  
SÓLVEIG ÁSTA**  
TO—Stanford University

MSc-Directed Study,  
Electrical Engineering.  
Barth Fund, Charles K.  
Willey Fund

**EINARSSON,  
ALEXANDER FREYR**  
TO—MIT Sloan School of  
Management

MA-Directed Study,  
Finance. Thor Thors  
Memorial Fund

**GUÐMUNDSDÓTTIR,  
HRAFNHILDUR  
MARTA**  
TO—Indiana University

MM-Directed Study,  
Cello Performance. Thor  
Thors Memorial Fund

**PÁLMAÐÓTTIR,  
NINNA RÚN**  
TO—NYU Tisch School  
of the Arts

MFA-Directed Study,  
Filmmaking. Thor Thors  
Memorial Fund, Charles  
K. Willey Fund

**RAGNARSDÓTTIR, BERGLIND HÓLM**  
TO—Graduate Center,  
The City University of  
New York ‘

PhD-Directed Study,  
Sociology. Charles K.  
Willey Fund

**SVEINSSON, ERENDUR**  
TO—Columbia University

MFA-Directed Study,  
Screenwriting &  
Directing. Charles K.  
Willey Fund

**TO ICELAND**

**HOFFMAN, SARAH FROM**—State University  
of New York at Buffalo  
TO—National Museum of  
Iceland

Dissertation Research,  
Bioarchaeology/  
Archaeology. Thor Thors  
Memorial Fund

**MINOR, SARAH FROM**—Ohio University  
TO—University of  
Iceland

Dissertation Research,  
Creative Writing. Thor  
Thors Memorial Fund

**FROM NORWAY**

All candidates  
recommended by  
The Norway-America  
Association (Norge-  
Amerika Foreningen), Oslo

**AAVITSLAND, VILDE LID**  
TO—DePaul University,  
Chicago

PhD-Directed Study,  
Philosophy. Andrew E. and  
G. Norman Wigeland Fund

**ASK, NICKOLAS**  
TO—Fordham University

JD-Directed Study.  
Andrew E. and G.  
Norman Wigeland Fund

**BJØRKE, ANNE**  
TO—University of South  
Florida

MA-Directed Study,  
Public Health and Social  
Work. Andrew E. and G.  
Norman Wigeland Fund

**FJELDBERG, ØYSTEIN**  
TO—University of  
California, San Diego

MSc-Directed Study,  
Materials Science.  
Norway House  
Foundation Fund

**GORDON, SAMUEL ASKLAND**  
TO—American Film  
Institute

MFA-Directed study,  
Film Directing. Mathilde  
Aas Memorial Fund,  
Andrew E. and G.  
Norman Wigeland Fund

**HAAKONSEN, HARALD**  
TO—University of  
Chicago

MBA-Directed Study.  
Andrew E. and G.  
Norman Wigeland Fund

**HAUGEN, JANNE BORGE**  
TO—University of  
Massachusetts

PhD-Directed Study,  
Marine Science and  
Technology. Andrew E.  
and G. Norman Wigeland  
Fund, Dr. Mary Jane  
Oestmann Fellowship  
Fund

**KVELLAND, EVEN**  
TO—Columbia  
University, School of  
International and Public  
Affairs

MA-Directed Study,  
International Affairs.  
Mathilde Aas Memorial  
Fund, King Håkon VII  
Fund, King Olav V Fund

**LANGØ, HANS-INGE GISKE**  
TO—University of Texas  
at Austin

PhD-Directed study,  
Government. Carl Olaf,  
Marie and Katherine  
Elizabeth Johnson  
Fellowship Fund

**LIND, CHRISTINE HAMBORGSTRØM**  
TO—University of  
California, San Diego

PhD-Directed Study,  
Computer Science and  
Engineering. Norway  
House Foundation Grant

**MOEN, MARIANNE ARVEI**  
TO—Boston University

LLM-Directed Study.  
Andrew E. and G.  
Norman Wigeland Fund

**NÆSS, MAJA ELISABETH**  
TO—University of  
Denver

MA-Directed Study.  
International Security.  
Mathilde Aas Memorial  
Fund, King Olav V Fund

**VESTBØSTAD, JOHANNE**  
TO—University of  
California, San Francisco

Graduate Research,  
Molecular Biology.  
Norway House  
Foundation Grant

**WANGENSTEN-ØYE, KARL EIRIK**  
TO—Stanford University

MSc-Directed Study,  
Structural Engineering.  
Norway House  
Foundation Grant

**TO NORWAY**

**CONNOR, JANET FROM**—University of  
Chicago  
TO—Social  
Anthropology Institute  
and the Center for  
Multilingualism in  
Society Across the  
Lifespan (MultiLing), at  
the University of Oslo

Dissertation Research,  
Linguistic Anthropology.  
Crown Princess Märtha  
Friendship Fund, The  
Sather Fund, King Olav  
V Fund, Carol and Hans  
Christian Sonne Fund

**STEINER, SALLIE ANNA**  
FROM—University of  
Wisconsin-Madison  
TO—Stiftinga Musea  
i Sogn og Fjordane &  
Sunnfjord Museum

Dissertation Research,  
Folklore - Material  
Culture. King Olav V  
Fund

**TARANTELLI, MADELINE**  
FROM—University of  
Missouri-Kansas City

Independent Research,  
Music – Horn  
Performance. Sven and  
Ingrid Bernhard Fund

**WITMORE, CHRISTOPHER**  
FROM—Texas Tech  
University  
TO—Department of  
Archaeology and Social  
Anthropology at the  
Arctic University of  
Norway (UiT)

Post-Doctoral Research,  
Archaeology. Carol and  
Hans Christian Sonne  
Fund, James L. Howard  
Grant

**FROM SWEDEN**

All candidates recommended by the Swedish Fulbright Commission, Stockholm

**ANSTRÉN, JOHAN PHILIP**

**TO—Georgetown University**

MSc-Directed Study, Foreign Service. Thord-Gray Memorial Fund

**BENGTSON, SARA TO—Columbia Law School**

LLM-Directed Study. Marcus and Amalia Wallenberg Fund, Thord-Gray Memorial Fund

**GRIND, SIMON ALLAN**

**TO—Maryland Institute College of Art (MICA)**

MFA-Directed Study, Fine Art. Thord-Gray Memorial Fund

**HENNINGSSON, DAVID HANS**

**TO—New York University, School of Law**

LLM-Directed Study. Thord-Gray Memorial Fund

**OLOFSSON, SOFIA MAGDALENA**

**TO—Cornell University**

MA-Directed Study, Public Administration. Marcus and Amalia Wallenberg Fund

**TO SWEDEN****ABNEY SALOMON, CHARLOTTE**

**FROM—Yale University**  
**TO—Hagströmer Library of the Karolinska Institute**

Dissertation Research, History of Science. Thord-Gray Memorial Fund

**ERIKSSON, KARIN FROM—University of Washington**

**TO—Uppsala University**

Dissertation Research, Scandinavian Studies. Scandinavian Seminar, Hans K. Lorentzen Fund

**OSEI-KOFI, NANA FROM—Oregon State University**

**TO—University of Gothenburg**

Post-Doctoral Research, Interdisciplinary Scandinavian Studies/Diaspora Studies. Thord-Gray Memorial Fund

**PERRYMAN, CLARICE**

**FROM—University of New Hampshire**  
**TO—Climate Impacts Research Center at the Abisko Scientific Research Station**

Graduate Research, Geosciences/Biogeochemistry. Scandinavian Seminar

**PRONIN, KIRA FROM—University of Pittsburgh**  
**TO—University of Gothenburg and Uppsala University**

Dissertation Research, Political Science. Thord-Gray Memorial Fund

**RABERG, ERIKA FROM—School of the Art Institute of Chicago (SAIC)**

Independent Research, Visual Arts -Photography & Film. Thord-Gray Memorial Fund

**ROOS, LIINA-LY FROM—University of Washington**  
**TO—Lund University**

Dissertation Research, Scandinavian Literature & Cinema. Thord-Gray Memorial Fund

**ROSE, AMBER FROM—University of Wisconsin-Madison**  
**TO—Uppsala Universitet, Campus Gotland**

Dissertation Research, Scandinavian Studies: Folklore. Philip W. Pfeifer III Fund

**STONE, ELIZABETH FROM—University of Virginia**

**TO—Stockholm University and Nationalmuseum, Stockholm & Zorn Museum in Mora**

Dissertation Research, Art History. Thord-Gray Memorial Fund

**VANDENBROEK, ANGELA**

**FROM—Binghamton University, SUNY**  
**TO—The Swedish Institute and the Department of Social Anthropology at Stockholm University**

Dissertation Research, Sociocultural Anthropology. Thord-Gray Memorial Fund

**TO MULTIPLE COUNTRIES****BELANGER, MARION**

**FROM—Wesleyan University**  
**TO—Svalbard Global Seed Vault, Abisko Scientific Research Station, The Center for Environmental and Climate Research at Lund University**

Post-Graduate Research, Fine Arts - Photography. Bernadotte Fund, Scandinavian Seminar

**FELDT, ALISON FROM—St. Olaf College**

**TO—Norwegian Academy of Music, Oslo; Norwegian Institute of Recorded Sound, Stavanger; University of Stavanger; Grieg Academy, Bergen; Royal College of Music, Stockholm; and Royal Danish Academy of Music, Copenhagen.**

Postdoctoral Research, Music: Nordic Solo Vocal Music. Alice and Corrin Strong Fund, Sven and Ingrid Bernhard Fund, James L. Howard Gran

## FELLOWS 2018 - 2019

### FROM DENMARK

#### LESSÉL, LOUISE

TO—New York  
University, Tisch School  
of the Arts

MA-Directed Study,  
Computer Science.  
Henrik Kauffmann Fund

### TO DENMARK

#### BUDINICH, JAMES FROM—Duke University

Independent Research,  
Music Composition. Sven  
and Ingrid Bernhard Fund

#### HELLBERG, SHERILYN FROM—University of California, Berkeley TO—University of Copenhagen

Dissertation Research,  
Comparative Literature  
& Film Studies. Amanda  
C. Roleson Fund

#### HELMS, ELEANOR FROM—California Polytechnic State University TO—Søren Kierkegaard Research Center, Copenhagen

Postdoctoral Research,  
Philosophy. Amanda C.  
Roleson Fund

#### HODIL, EARL FROM—Yale University TO—Saxo Institute at the University of Copenhagen

Dissertation Research,  
Scandinavian and  
Russian History. Helen  
Lee and Emil Lassen  
Fund

#### KELMELIS, KIRSTEN FROM— Pennsylvania State University TO—ADBOU, Institute of Forensic Medicine, University of Southern Denmark

Dissertation Research,  
Anthropology & Paleo-  
demography. Peter and  
Birgit Faber Morse Fund

#### MARTIN, MORGAN FROM—University of Pretoria, South Africa TO—University of Southern Denmark

Dissertation Research,  
Marine Mammal  
Conservation. Henrik  
Kauffmann Fund,  
Amanda C. Roleson Fund

#### WANG, ZIYU FROM—Pennsylvania State University TO—University of Southern Denmark

Dissertation Research,  
Archeology. Peter and  
Birgit Faber Morse Fund

### FROM FINLAND

All candidates  
recommended by the  
League of Finnish-  
American Societies  
(Suomi-Amerikka  
Yhdistysten Liitto), Helsinki

#### HENRIKSSON, ERIK TO—University of California, Los Angeles

Dissertation Research,  
Linguistics. The Jane  
and Aatos Erkko Fund

#### ILVESMÄKI, HENRIK TO—Harvard Graduate School of Design

MA-Directed Study,  
Architecture. Saara  
and Björn Wahlroos  
Fellowship Fund

#### KIRVESLAHTI, HENRY TO—Duke University

PhD-Directed Study,  
Statistical Science. Carl  
G. and Rikke Fredriksen  
Barth Fund

#### KOPONEN, EMMA- JOHANNA TO—University of Michigan

MA-Directed Study, Piano  
Performance. Thor and  
Saimi Soderholm Fund

#### SURMA-AHO, ANTTI TO—Massachusetts Institute of Technology

Dissertation Research,  
Mechanical Engineering.  
Saara and Björn Wahlroos  
Fellowship Fund, Thor  
and Saimi Soderholm  
Fund, Carl G. and Rikke  
Fredriksen Barth Fund

### TO FINLAND

#### MELLOR, SCOTT FROM—University of Wisconsin-Madison TO—Sjöfartsmuseum [Nautical Museum] in Mariehamn

Postdoctoral Research,  
Folklore. The Jane and  
Aatos Erkko Fund

#### OCOBOCK, CARA FROM—University at Albany, SUNY TO—Arctic Centre, University of Lapland

Postdoctoral Research,  
Biological Anthropology.  
Scandinavian Seminar

#### TRYCHTA, KATHLEEN FROM—University of Maryland, Baltimore TO—University of Helsinki

Dissertation Research,  
Cellular Mechanisms of  
Disease. The Jane and  
Aatos Erkko Fund

### FROM ICELAND

All candidates  
recommended by the  
Icelandic-American  
Society (Íslensk-  
Ameríska Félagid),  
Reykjavik

#### BJÖRNSSON, ÓLAFUR DARRI TO—University of Chicago

MA-Directed Study,  
International Relations.  
Thor Thors Memorial  
Fund

#### GUÐMUNDSDÓTTIR, GEIRPRÚÐUR ANNA TO—Julliard School

MM-Directed Study,  
Classical Music  
Performance – Cello. Thor  
Thors Memorial Fund

#### GUNNARSSON, ARNÓR GUNNAR TO—Columbia University

MA-Directed Study,  
History. Thor Thors  
Memorial Fund

#### HÖSKULDSDÓTTIR VIBORG, EYGLÓ TO—New York University

MM-Directed Study, Music  
Composition and Theory.  
Charles K. Willey Fund

#### SIGURÐSSON, KRISTJÁN THEODÓR TO—University of California, Berkeley

MEng-Directed Study,  
Mechanical Engineering.  
Charles K. Willey Fund

#### ÚLFSSON, KÁRI TO—Columbia University

MFA-Directed Study,  
Film. Charles K. Willey  
Fund, Barth Fund

**TO ICELAND**

**BLASHFORD, MARK**  
**FROM—Rootstock**  
**Puppet Co.**  
**TO—The National**  
**Theater of Iceland &**  
**the Icelandic Center for**  
**Puppetry Arts**

Post-Graduate  
 Research, Performing  
 Arts – Puppetry. Thor  
 Thors Memorial Fund

**CESARIO, GRACE**  
**FROM—The Graduate**  
**Center, CUNY**  
**TO—Fornleifastofnun**  
**Íslands (The Institute of**  
**Archaeology, Iceland)**

Dissertation Research,  
 Archaeology.  
 Scandinavian Seminar

**KOUTNIK,**  
**MICHELLE**  
**FROM—University of**  
**Washington**  
**TO—University of**  
**Iceland**

Postdoctoral Research,  
 Geophysics – Glaciology.  
 Scandinavian Seminar

**PERERA,**  
**ELIZABETH**  
**FROM—York University,**  
**Toronto, ON**

Graduate Research,  
 Arctic Hydroclimatology  
 of Wetlands.  
 Scandinavian Seminar

**SAVAGE, MAXINE**  
**FROM—University of**  
**Washington**  
**TO—University of**  
**Iceland**

Graduate Research,  
 Language and Literature.  
 Thor Thors Memorial Fund,  
 Former Fellows Fund, Hans  
 K. Lorentzen Fund

**FROM NORWAY**

All candidates  
 recommended by  
 the Norway-America  
 Association (Norge-  
 Amerika Foreningen), Oslo

**BERGERSEN,**  
**ASLAK**  
**TO—Stanford University**

Dissertation Research,  
 Biomedical Engineering/  
 Computer Science.  
 Norway House  
 Foundation Grant

**BJUGN,**  
**ISAK KYRRE**  
**LICHTWARCK**  
**TO—University of**  
**California, Berkeley**

Graduate Research,  
 Bionanotechnology.  
 Andrew E. and G.  
 Norman Wigeland  
 Fund, Norway House  
 Foundation Fund

**BØDAL, ESPEN FLO**  
**TO—Massachusetts**  
**Institute of Technology**

Dissertation Research,  
 Engineering. Stolt-Nielsen  
 Fund for Education, Håkon  
 Styri Fund

**GULBRANDSEN,**  
**MAGNUS ANDREAS**  
**HAARE**  
**TO—University of**  
**California, Berkeley**

Dissertation Research,  
 Economics. Norway  
 House Foundation  
 Fund, Andrew E. and G.  
 Norman Wigeland Fund

**HAAKONSEN,**  
**HARALD**  
**TO—University of**  
**Chicago**

MBA-Directed Study,  
 Business Administration.  
 Andrew E. and G.  
 Norman Wigeland Fund

**HAYER, SIRI**  
**TO—University of**  
**Chicago**

MPP-Directed Study,  
 Public Policy/Human  
 Rights. Andrew E. and G.  
 Norman Wigeland Fund

**KERR, CASPAR**  
**BOYE MARTENS**  
**TO—Massachusetts**  
**Institute of Technology**

Graduate Research,  
 Industrial Design  
 Engineering. Andrew E.  
 and G. Norman Wigeland  
 Fund, Mathilde Aas  
 Memorial Fund

**KVELLAND, EVEN**  
**TO—Columbia**  
**University**

MA-Directed Study,  
 International Affairs.  
 Mathilde Aas Memorial  
 Fund, King Haakon VII  
 Fund, King Olav V Fund

**LAVELLE, MARIA**  
**TO—New York**  
**University**

MFA, Film - Writing &  
 Directing. Andrew E. and  
 G. Norman Wigeland  
 Fund

**LENVIK, ASTRID**  
**TO—University of**  
**California, Berkeley**

Dissertation Research,  
 Special Needs  
 Education. Norway  
 House Foundation Grant

**LINGJÆRDE,**  
**CAMILLA**  
**TO—University of**  
**California, Berkeley**

Graduate Research,  
 Statistics & Data  
 Analysis. Norway  
 House Foundation  
 Grant, Andrew E. and G.  
 Norman Wigeland Fund

**MOLDEN, LARS**  
**HOVDAN**  
**TO—University of**  
**Wisconsin—Madison**

Dissertation Research,  
 Business Administration.  
 Andrew E. and G.  
 Norman Wigeland Fund

**MUSHOM, LARS**  
**TO—University of**  
**California, Berkeley**

Graduate Research,  
 Applied Mathematics.  
 Andrew E. and G.  
 Norman Wigeland Fund,  
 Mathilde Aas Memorial  
 Fund

**ONSHUUS, HELENE**  
**TO—Princeton**  
**University**

Dissertation Research,  
 Economics. King Olav V  
 Fund

**ØSTBY, MAUD**  
**TO—Long Island**  
**University Post**

MSc-Directed Study,  
 Clinical Mental Health  
 Counseling. King Haakon  
 VII Fund

**WARD, HENNING**  
**TO—University of**  
**California, Berkeley**

Graduate Research,  
 Cybernetics. Mathilde  
 Aas Memorial Fund,  
 Norway House  
 Foundation Fund

**TO NORWAY**

**HYATT, JORDAN**  
**FROM—Drexel**  
**University**  
**TO—Statistisk**  
**sentralbyrås (Statistics**  
**Norway)**

Postdoctoral Research,  
 Criminology/ Sociology.  
 Crown Princess Märtha  
 Friendship Fund



**IHDE, KIRSTIN**  
**FROM—University of Wisconsin, Oshkosh**

Independent Research, Music Performance. Alice and Corrin Strong Fund

**JOHNSON, KATIE**  
**FROM—University of Tennessee-Knoxville**

Independent Research, Music Performance. Sven and Ingrid Bernhard Fund

**RETELLE, MICHAEL**  
**FROM—Bates College**  
**TO—University Centre in Svalbard**

Postdoctoral Research, Geoscience. Scandinavian Seminar

### **FROM SWEDEN**

All candidates recommended by the Swedish Fulbright Commission, Stockholm

**HENKOW, FRIDA**  
**ALEXANDRA**  
**TO—New York University**

MA-Directed Study, International Relations. Marcus and Amalia Wallenberg Fund

**KENNY, EMMA**  
**JOSEPHINE**  
**TO—Northeastern University**

MA-Directed Study, International Affairs. The Dr. Mary Jane Oestmann Fellowship Fund in the Sciences, Thord-Gray Memorial Fund

**SAURÉN, MARIA**  
**ANNA-KARIN**  
**PAULINA**  
**TO—University of California, Los Angeles**

LLM-Directed Study. The Dr. Mary Jane Oestmann Fellowship Fund in the Sciences, Marcus and Amalia Wallenberg Fund

### **TO SWEDEN**

**CARROLL, CAITLIN**  
**FROM—University of Texas at Austin**  
**TO—Centrum för genusvetenskap (Centre for Gender Research), Uppsala University**

Dissertation Research, Sociology. Thord-Gray Memorial Fund

**LAYNE, ADAM**  
**FROM—University of Oregon, Eugene**  
**TO—Royal Institute of Technology, Stockholm**

Postdoctoral Research, Mathematics. Thord-Gray Memorial Fund, Selma Swanson Fund

**MIDDLETON, ALEXANDRA**  
**FROM—Princeton University**  
**TO—Chalmers University of Technology**

Dissertation Research, Medical Anthropology & Social Studies of Science and Technology. Thord-Gray Memorial Fund

**SMITH, JOSHUA**  
**FROM—Humboldt State University**  
**TO—Uppsala University**

Postdoctoral Research, Physical Organic Chemistry. John G. Bergquist Fund

**ZHU, JIAHUA**  
**FROM—University of Akron**  
**TO—Luleå University of Technology**

Postdoctoral Research, Applied Chemistry. Bernadotte Fund, Thord-Gray Memorial Fund

### **TO MULTIPLE COUNTRIES**

**BELANGER, MARION**  
**FROM—Wesleyan University**  
**TO—Svalbard Global Seed Vault, Abisko Scientific Research Station, The Center for Environmental and Climate Research at Lund University**

Post-Graduate Research, Fine Arts – Photography. Bernadotte Fund, Scandinavian Seminar

**FELDT, ALISON**  
**FROM—St. Olaf College**  
**TO—Norwegian Academy of Music, Oslo; Norwegian Institute of Recorded Sound, Stavanger; University of Stavanger; Grieg Academy, Bergen; Royal College of Music, Stockholm; and Royal Danish Academy of Music, Copenhagen**

Postdoctoral Research, Music: Nordic Solo Vocal Music. Alice and Corrin Strong Fund, Sven and Ingrid Bernhard Fund, James L. Howard Grant

## FOLK ART FELLOWS 2017 - 2018

### ANDERSON, JUSTIN

FROM—Duluth, MN

Apprentice Justin Anderson and master shipwright John Finkle traveled to the Viking Ship Museum in Roskilde, Denmark, to study traditional hand-crafted, Scandinavian-style, lapstrake, clinker-built wooden boats. The project featured monthly community workshops in Duluth before and after the research trip to communicate about and perpetuate the learning of traditional skills.

### BLOOMQUIST, PIEPER

FROM—Grand Forks, ND

Master artist Pieper Bloomquist and her apprentice Molly McLain studied canvas painting and traditional decorative painting on furniture, folk traditions from Dalarna, Sweden. Upon their return, they continued to perpetuate these traditions through events in eastern North Dakota and northwestern Minnesota.

### CHRYSLER, JOSHUA

FROM—Fort Collins, CO

Mr. Chrysler conducted a survey of Scandinavian traditional arts and folklife in South Dakota, focusing on the southeastern corner of the state. His project resulted in 20-25 ethnographic interviews and documentation (audio recordings, photo documentation, field notes), which were intended to help the South Dakota Arts Council Traditional Arts Program to better serve the community with its Traditional Arts Apprenticeship Program, as well as its Arts for Life artists-in-residence program.

### HERKERT, ANDREA

FROM—Belleville, WI

Ms. Herkert traveled to Norway to boost her knowledge of rural artists, culture and history, while further developing her artistic skills to enhance her teaching and her painting. Her project included working with master Rosemaling artists Turid Helle Fatland and Tove Ness.

### HIRSCH, JESS

FROM—Minneapolis, MN

Ms. Hirsch studied with master woodworker Beth Moen at the Sätergläntan Folk School to learn how to make hand carved bowls and also how to teach bowl carving. She returned home to share her new knowledge at Women's Woodshop, a storefront studio space that trains women in woodworking skills.

### LARSEN, ROBERT

FROM—Brainerd, MN

Master Hardanger Fiddle Luthier Robert (Bud) Larsen and his two apprentices, Aaran Joneson and Craig Bjorland, traveled to Telemark, Norway, to study Hardanger fiddle building traditions by visiting collections in museums and private collections. They also attended fiddling and dance competitions, while working with local fiddle builders. This project strengthened the apprentices' knowledge of the culture and traditions of the Hardanger fiddle and helped establish a connection between American and Norwegian luthiers.

### MUSSER, BILL

FROM—Decorah, IA

Otter Dreaming, a professional musician, piano instructor, composer, and conductor, transcribed into standard notation the tune-books of Johan Arndt Mostad (1833-1909), a Norwegian immigrant who came from the community of Frosta in Trøndelag to Winneshiek County, Iowa, in 1869.

### REBHOLZ, KAREN

FROM—Madison, WI

Ms. Rebholz studied sound adjustments done during the construction of Hardanger fiddles with Sigvald Rorlien, the director of the Hardanger fiddle building workshop at Ole Bull Akademiet in Voss, Norway. She learned the intricacies of adjustments to the bass bar, bridge and rigging—skills not commonly understood by current U.S. luthiers.

### RENNAN, ARNA

FROM—Duluth, MN

Ms. Rennan attended three major folk music gatherings in Scandinavia to interview young artists for her Nordic Roots Radio program. She produced 20 new programs from these interviews, focusing on the trends among younger folk musicians and the spectrum between traditional folk and contemporary fusion.

### SHAW, AMY

FROM—St. Paul, MN

Ms. Shaw prepared for publication an edition of a rare 1890s tunebook by Norwegian fiddler Ole Hendricks (1851-1935), who settled in western Minnesota. The 97-page manuscript is an important primary source for the study of traditional music and dance in the Scandinavian-American communities. The publication will include tune transcriptions and annotations; an introduction providing both biographical and historical context; illustrations; and a companion CD of a selection of the tunes, featuring master artists Vidor Skrede and Beth Rotto.

## **PUBLIC PROGRAMS & COMMUNITY PROJECTS 2017-2018**

### **CRIS ANDERSON PRODUCTIONS**

**Minneapolis, MN**

In support of an independent public television documentary about 83-year-old Danish-American master fiddler and button accordion player, Dwight Lamb.

### **FOLKLORE VILLAGE**

**Dodgeville, WI**

In support of a series of summer hands-on workshops that highlight Scandinavian traditional arts at the Folk School at Folklore Village.

### **VESTERHEIM NORWEGIAN-AMERICAN MUSEUM**

**Decorah, IA**

In support of creating a Scandinavian Handcraft Club for Kids that will teach the basics of rosemaling and weaving based upon the success of the model established by Vesterheim's Whiting Klubb.

### **THE CEDAR CULTURAL CENTER, INC.**

**Minneapolis, MN**

In support of the participation of Swedish folk rockers Høven Drøven at The Cedar's three-day 10th Annual Global Roots Festival. Høven Drøven will also lead at least one educational activity, workshop, or discussion in the local Somali community each day during the festival.

## **FOLK ART FELLOWS 2018 - 2019**

### **AUNE, ALISON**

**FROM—Duluth, MN**

Ms. Aune researched and studied contemporary Swedish folk-art painting in order to create a more informed and expanded body of work. After this study she continued to promote the appreciation and preservation of Swedish folk painting through community exhibitions, presentations, and workshops for all ages.

### **BENDER, CAROL & RUCINSKI, PAMELA**

**FROM—Wisconsin Rapids and Oshkosh, WI**

Ms. Bender and Ms. Rucinski traveled to Sweden to broaden their painting skills by studying traditional materials and methods used for Dalmålning and Rattvik painting. They also studied the traditional folk-art paintings of Helsingland and bonadasmålning in southern Sweden.

### **EDGIN, ERIC**

**FROM—Duluth, MN**

Mr. Edgin visited the Vesterheim Museum in Decorah, Iowa, to examine their collections of coppered vessels. Using measurements and photos, he made both the specialized tools needed for Scandinavian work methods and the vessels inspired by those that he handled. Edgin then documented the process and displayed the new vessels to inspire others to participate in this craft.

### **KEENAN, KAREN**

**FROM—Duluth, MN**

Ms. Keenan's project involved reviving in the Midwest the once well-known Swedish traditional folk art of jewelry known as 'hairwork.' As an apprentice to Joanna Svensson, she made traditional Swedish folk-art table-constructed hairwork jewelry and continues to bring this skill back to the Duluth region by teaching classes at Duluth's Nordic Center and other arts venues.

### **LAFLEUR, ROBBIE**

**FROM—Minneapolis, MN**

Ms. LaFleur traveled to Norway to focus on Norwegian billedvev (tapestry) to enhance her weaving practice and enrich her teaching. During a 19-day residency at Frida Hansens Hus in Stavanger, Norway, she studied the work of renowned weaver Frida Hansen. Upon her return, LaFleur continued to lecture at the Weavers Guild of Minnesota and Vesterheim, publish an article in the Norwegian Textile Letter, and add her newly learned techniques to specialty workshops for weavers, textile enthusiasts, and people interested in Norwegian cultural history.

### **LAHTI, DUANE**

**FROM—Iron River, WI**

Mr. Lahti and his apprentice, restored the John Aho farmstead house, an 1890s pioneer house and example of Finnish-American vernacular architecture, recently moved to the Oulu Cultural and Heritage Center (OCHC). The apprentice learned log building and historic structure renovation skills and thus continued to perpetuate this traditional art form.

### **LUSK, BECKY**

**FROM—Coon Valley, WI**

Ms. Lusk traveled to Skreia, Norway to participate in the study of Acanthus & Dragon Style Drawing and Design with master woodcarver, Arve Mosand. While there she deepened her knowledge of the design elements of Acanthus and Dragon Style forms of relief carving.

**NORMAN, NATALIE**  
**FROM—Minneapolis, MN**

Ms. Norman participated in a two five-day embroidery course on yllebroderi and pasom at Saterglantan. Norman also studied embroidery samples at the Dalarnas Museum in Falun, Ottelia Adleborg Museum in Gagnef, and the Nordiska Museum in Stockholm to enhance her skills in traditional Swedish hand embroidery techniques. Upon her return, she continued to conduct workshops to encourage the perpetuation of traditional embroidery skills.

**OLSON, PETER**  
**FROM—Chassell, MI**

Mr. Olson is passing on the skills and knowledge of a lifetime working in the woods to apprentices Marjorie Miller, Matthew Durocher, and Arne Pelto. The apprentices learned how to harvest wood and supplies and then to carve birds with wings and tail out of one piece of wood, as well as other crafts such as rocking man, weather stick, spoons, sauna ladle, whistle, sun symbols, baskets, and hay rakes.

**PAJUNEN, SARA**  
**FROM—Gilbert, MN**

Ms. Pajunen, an accomplished classical violinist and traditional fiddler, studied along-side Benedicte Maurseth and Knut Hamre, two of Norway's most celebrated fiddlers, immersing herself in Hardanger fiddle tradition. She continues to study the history of the tradition, the mechanics and style of the instrument and bow, and the various tune types.

**PETERSON, WILLIAM**  
**FROM—Canton, SD**

Mr. Peterson created a live television recording and webcast performing tunes from the repertoire of renowned Danish-American fiddler and button accordion player Dwight Lamb. The program took place on Thursday, June 14, 2019, in the South Dakota Public Broadcasting studio in Sioux Falls, SD. The program included fiddler Kristian Bugge, accordionist Mette Jensen Staerk and guitarist Morten Alfred Hoirup, as well as members of the Omaha Scandinavian dancers who danced to these polkas, waltzes and schottisches.

**PRYOR, ANNE**  
**FROM—Madison, WI**

Ms. Pryor conducted ethnographic fieldwork documenting Scandinavian-American cultural practices in foodways and agriculture in Wisconsin. The research will be used by the Wisconsin Teachers of Local Culture (WTLC) to create resource materials for K-14 school

teachers, librarians, and museum educators in 2020, helping to heighten the visibility of and perpetuate traditional practices.

**RORVIG, DONALD**  
**FROM—Stoughton, WI**

Mr. Rorvig and his apprentice Rodger Hanson created a historically accurate reproduction of the Oseburg Wagon, the original of which was excavated by archaeologists and is now found in the Viking Ship Museum in Oslo, Norway. Rorvig's project will perpetuate the Oseberg Style (typical of Viking or Nordic art in the Ninth Century) in the United States. The Wagon will be available for viewing by the public at various times during its construction and upon completion will be part of public presentations around the Midwest on the history of the Oseberg Wagon and Oseberg Art Style.

**SAWYER, MICHAEL**  
**FROM—Saint Paul, MN**

Mr. Sawyer studied and continues to transcribe, teach and archive the collections of Minnesota master fiddler Hilary Stoltman and his father, Walter Stoltman. The Upper Midwest Folk Fiddlers will continue presenting Stoltmans' work to the public through concerts, workshops, and websites.

**SUTTER, ROSS**  
**FROM—Minneapolis, MN**

Mr. Sutter studied with master Swedish traditional singer Anders Larsson, focusing on unaccompanied song, particularly the Swedish form of lilting dance tunes called trall. Sutter studied in Sweden for 20 days in July 2019. Following his study, he and Larsson will present songs at the American Swedish Institute in Minneapolis.

**ZURAW, CLARE**  
**FROM—Houghton, MI**

Ms. Zuraw has deepened her skills in performing and teaching the jouhikko (the traditional Finnish bowed lyre) by traveling to Finland to participate in a series of private lessons with Helsinki-based master jouhikko player Ilkka Heinonen as well as other masters. She returned to Michigan to engage the community as a stronger teacher and more refined performer and broaden awareness of this ancient folk instrument in the United States.

## PUBLIC PROGRAMS & COMMUNITY PROJECTS 2018-2019

### ARTS MIDWEST Minneapolis, MN

In support of the participation of Norwegian musician Unni Boksasp and her ensemble at the 2019 *Arts Midwest World Fest*. The ensemble will conduct week-long residencies in Prairie Du Chien, Wisconsin; Dubuque, Iowa; Red Wing, Minnesota; Pierre, South Dakota; and Dickinson, North Dakota.

### DAWSON-BOYD ARTS ASSOCIATION Dawson, MN

In support of artists' fees and travel expenses for *Scandinavian Folk Music Infusion!*, a series of workshops and performances of Scandinavian and Scandinavian-American traditional folk music for elementary and high school music students as well as for adults and senior residents in rural western Minnesota.

### FINLANDIA UNIVERSITY FINNISH & NORDIC STUDIES PROGRAM Hancock, MI

In support of *Pelkie: A Century of Finnishness in the American Northwoods*, a documentary film project detailing the folklife and history of Pelkie, a Finnish-American farming and logging community in Michigan's Upper Peninsula.

### MUSEUM OF DANISH AMERICA Decorah, IA

In support of Nordic-American Culinary Arts: Documentation and Video Project, which will document traditional Nordic culinary arts within the Nordic-American communities of the Twin Cities metropolitan area.

### NISSWA STAMMAN Brainerd, MN

In support of *Nisswa Stamman 20th Anniversary Nordic Folk Artist's Workshops*, a series of workshops celebrating, augmenting, and preserving Nordic traditional music and dance in which nine tradition-bearers from the Nordic countries and four U.S. masters will teach two two-hour workshops.

### WISCONSIN TEACHERS OF LOCAL CULTURE C/O FOLKLORE VILLAGE Madison, WI

In support of *Scandinavian Folk Arts in the K-12 Classroom*, a one-day professional development workshop introducing educators to Scandinavian-American traditional artists, offering insights on the cultural life of their communities, and providing tools for identifying and integrating local culture resources into their curricula.

## PUBLIC PROJECT GRANTS

ASF's Public Project Grants provide support for programs of Scandinavian culture, art, and thought across the United States, as well as programs presenting American culture to the Nordic countries. During 2017–2018, \$32,000 was awarded in grants to eighteen public projects; in 2018–2019, an additional \$39,600 was awarded to fifteen projects. In cooperation with distinguished institutions across the U.S. and abroad, funding is allocated to allow institutions of all sizes to add programming focused on Nordic culture.

### PUBLIC PROJECT GRANTS FUNDED BY ASF 2017-18

#### American Swedish Historical Foundation, Philadelphia, PA

In support of the *ASHM Summer Concert Series*, featuring Swedish folk artists Oskar Stenmark and JAERV, August 3–31, 2018. *New Sweden '88 Fund*

#### andPLAY, INC., New York, NY

In support of a collaborative concert by the Swedish composer collective, koetsu, entitled "Translucent Harmonies," to be performed in the Fall of 2018. *New Sweden '88 Fund*

#### Ars Nova Workshop, Philadelphia, PA

In support of *Time is a Blind Guide*, presentation of Norwegian drummer Paal Nilssen-Love's large ensemble Large Unit, as part of a series of presentations by Scandinavian artists to close out the 2017–18 season, June 1 – July 31, 2018. *Andrew E. and G. Norman Wigeland Fund*

#### Bishop Hill Heritage Association, Bishop Hill, IL

In support of a performance by The Nordland Band at the *Bishop Hill Midsommar Music Festival* and a Scandinavian folk songs workshop at the Steeple Building Museum, Saturday, June 23, 2018. *Thord-Gray Memorial Fund*

#### City Parks Foundation, New York, NY

In support of performances of Ingmar Bergman's *Beppo the Clown*, at the Swedish Cottage Marionette Theatre, October 3 – 7, 2018. *New Sweden '88 Fund*

#### Holy Trinity (Old Swedes) Foundation, Inc., Wilmington, DE

In support of the participation of Dr. Linda Rugg and Dr. Gregg Roeber as speakers at the *18th Annual New Sweden History Conference (NSHC)*, at the German Society of Philadelphia, Saturday, November 10, 2018. *New Sweden '88 Fund*

#### Lotus Education and Arts Foundation, Bloomington, IN

In support of performances by Swedish folk rock band Hoven Droven at the *25th Lotus World Music & Arts Festival*, September 28–29, 2018. *Thord-Gray Memorial Fund*



**Museum of Contemporary Art Tucson, Tucson, AZ**

In support of Denmark-based contemporary artist Rose Eken's solo exhibition *In Residence*, January 13 – March 31, 2018. *Helen Lee and Emil Lassen Fund*

**Mystic Seaport Museum, Inc., Mystic, CT**

In support of the exhibition *The Era of Exhibitions at Mystic Seaport: The Vikings Begin and The Vinland Map*, May – September 2018. *Thord-Gray Memorial Fund*

**New York Scandia Symphony, New York, NY**

In support of the *Scandinavian Music Festival in Fort Tryon Park*, June 10-24, 2018. *Henrik Kauffmann Fund*

**Nordic Museum, Seattle, WA**

In support of the exhibition *Northern Exposure: Contemporary Nordic Arts Revealed*, the inaugural special exhibition for the Grand Opening of the new Nordic Museum, May 5 - September 16, 2018. *Henrik Kauffmann Fund*

**Norway House, Minneapolis, MN**

In support of travel expenses for Oslo-based photographer, Nancy Bundt, for the exhibition *Perceptions of Norway: A photographic exhibit on the lives of Norwegians today*, April 6 – June 16, 2018. *Andrew E. and G. Norman Wigeland Fund*

**Orpheus Chamber Orchestra, Inc., New York, NY**

In support of travel expenses for Norwegian musicians Truls Mørk and Tine Thing Helseth to participate in collaboration performances with Orpheus Chamber Orchestra at Carnegie Hall and on domestic tour, December 2, 2017 – February 3, 2018. *Andrew E. and G. Norman Wigeland Fund*

**The Oshkosh Area Community Foundation, Oshkosh, WI**

In support of the *Nordic Music Festival*, October 14-18, 2018. *Thord-Gray Memorial Fund*

**Other Minds, San Francisco, CA**

In support of travel expenses for the participation of Norwegian artists Espen Sommer Eide and Tone Åse in *OM Festival 23: International Sound Poetry, Language Art and Text-Sound Composition*, April 9-14, 2018. *Andrew E. and G. Norman Wigeland Fund*

**Performance Space 122, Inc., New York, NY**

In support of performances of 21 PORNOGRAPHIES by Danish choreographer Mette Ingvartsen, as part of Performance Space New York's *Posthuman Series*, August - December 2019. *Helen Lee and Emil Lassen Fund*

**Solomon R. Guggenheim Museum and Foundation, New York, NY**

In support of an exhibition of works by Swedish artist Hilma af Klint, October 18, 2018 - February 3, 2019. *New Sweden '88 Fund, Philip W. Pfeifer III Fund*

**Yellowstone Art Museum. Billings, MT**

In support of the exhibition, *Emil Carlsen's Quiet Harmonies: A Historic Master in Contemporary Context*, an examination of landscapes by Danish-American painter Emil Carlsen, January 1 – September 30, 2018. *Helen Lee and Emil Lassen Fund*

**PUBLIC PROJECT GRANTS FUNDED BY ASF 2018-2019****Anchorage Museum Association, Anchorage, AK**

In support of the symposium *Curating the North* to be held in Anchorage, Alaska, March 1-June 30, 2019, a collaboration with the Arctic Culture Lab in Kjøllefjord and the Northern Norway Art Museum in Tromsø, Norway. *Andrew E. and G. Norman Wigeland Fund*

**Big Ears Festival, Knoxville, TN**

In support of performances by the Norwegian group, Mathias Eick Quintet, at Big Ears Festival on March 21-24, 2019. *Andrew E. and G. Norman Wigeland Fund*

**Composers Concordance, West Newton, MA, Bennington, VT & New York, NY**

In support of travel expenses for Oslo-based accordionist, Andreas Angell, to participate in *Andreas Angell / Bjorn Bolstad Skjelbred US Tour*, June 21-23, 2019. *Andrew E. and G. Norman Wigeland Fund*

**Gettysburg College, Gettysburg, PA**

In support of the exhibition *Across the West and Toward the North: Norwegian and American Landscape Photography*, May 1, 2019-May 1, 2022. *Andrew E. and G. Norman Wigeland Fund*

**HERE Art Center, New York, NY**

In support of the New York City premiere of *Ashes*, a haunting puppetry work created by French-Norwegian company Plexus Polaire and directed by Norwegian artist Yngvild Aspeli, March 12-17, 2019. *Andrew E. and G. Norman Wigeland Fund*

**Holy Trinity (Old Swedes) Foundation dba Old Swedes Foundation & Historic Site, Essington, PA**

In support of travel expenses for Dr. Byron Nordstrom to participate in "Kindling Their Hearts – Music", the Nineteenth Annual New Sweden History Conference (NSHC), November 2, 2019. *New Sweden '88 Fund*

**IARMAC (International Academy for Russian Music, Arts, and Culture), Iowa City, Coralville & Cedar Rapids, IA**

In support of travel expenses for Norwegian guitarist, Marko Erdivicki, to participate in *Russian Seven-String Guitar Festival IARGUS 2019*, which will be a Scandinavian themed festival with the creation and performance of new arrangements of music by Edvard Grieg and Carl Bellman for Russian Guitar ensembles. *Andrew E. and G. Norman Wigeland Fund*

**Mela listamannafélag, Herðubreið, Seyðisfjörður, Iceland**

In support of the Icelandic premiere of opera *The Raven's Kiss*, by Evan Fein and Þorvald Davíð Kristjánsson, August 8-25, 2019. *Sven and Ingrid Bernhard Fund*

**MiolinaNYC Inc, New York, NY**

In support of travel expenses for Swedish sound artist/composer, Ann Rosén, to participate in a performance of "Crossing the Barrier", a concert which features works by five contemporary Scandinavian composers. *New Sweden '88 Fund*

**Museum of Arts and Design, New York, NY**

In support of the transportation of jewelry from Sweden for the exhibition *Non-Stick Nostalgia: Y2K Retrofuturism in Contemporary Jewelry*, March 21 - July 17, 2019. *New Sweden '88 Fund*

**Nasher Sculpture Center, Dallas, TX**

In support of travel expenses for Norwegian artist, Ingar Dragset, to participate in the exhibition *Elmgreen & Dragset*, September 14, 2019 – January 5, 2020. *Andrew E. and G. Norman Wigeland Fund*

**New York Scandia Symphony, New York, NY**

In support of three concerts at *The Scandinavian Music Festival 2019* at Fort Tryon Park in Northern Manhattan, June 2-16, 2019. *Helen Lee and Emil Lassen Fund, New Sweden '88 Fund*

**The Crossing, Philadelphia, PA**

In support of the Philadelphia premiere performances of *Aniara: fragments of time & space*, an experimental, hybrid, choral-theater work, January 1-June 30, 2019. *New Sweden '88 Fund*

**The Edvard Grieg Society of the Great Lakes, Goshen, IN**

In support of *A Norwegian in Paris: Edvard Grieg and Fin-de-siècle French Music*, a two-day conference including concerts and piano and voice competitions at the University of Indianapolis, March 31, 2019-April 2, 2019. *Andrew E. and G. Norman Wigeland Fund*

**The Phillips Collection, Washington, DC**

In support of the exhibition *Nordic Impressions: Art from Åland, Denmark, the Faroe Islands, Finland, Greenland, Iceland, Norway, and Sweden, 1821-2017*, October 13, 2018-January 13, 2019. *Andrew E. and G. Norman Wigeland Fund, Helen Lee and Emil Lassen Fund*

## TRANSLATION PRIZES

Outstanding English translations of poetry, fiction, drama, or literary prose originally written in a Nordic language are recognized each year by ASF's Nadia Christensen Translation Prize and Leif and Inger Sjöberg Translation Prize.

### 2017-18

**MÄKINEN, MAIJA LIISA**

**Nadia Christensen Prize**

Translation from Finnish of an excerpt from *Pelon maantiede (Geography of Fear)* by Anja Snellman. *The Rev. Lars R. Lund Fund for Nordic Literature*

**BOWERS, MELISSA**

**Leif and Inger Sjöberg Prize**

Translation from Swedish of poems from *Vittnen till meningslösa händelser (Witness to Meaningless Events)* by Jasmin Mohamed. *Leif and Inger Sjöberg Fund*

### 2018-19

**VANADA, KELSI**

**Nadia Christensen Prize**

Translation from Swedish of poems from *Atlantis* by Marie Silkeberg. *The Rev. Lars R. Lund Fund for Nordic Literature*

**HELLBERG, SHERILYN Leif and Inger Sjöberg Prize**

Translation from Danish of poems from *Nike* by Caspar Eric. *Leif and Inger Sjöberg Fund*

## VISITING LECTURESHIP

Each year, ASF offers funding to American colleges and universities to support a semester long visiting lecture-ship by a distinguished scholar from Norway along with a travel stipend so that the lecturer can speak at other institutions in the U.S.

### 2017-18

**YALE UNIVERSITY NEW HAVEN, CT**

**Department of Psychiatry**

In support of Dr. Ottar Ness (University College of Southeast Norway), Fall Semester 2017. *Andrew E. and G. Norman Wigeland Fund*

### 2018-19

**GEORGETOWN UNIVERSITY, WASHINGTON, DC**

**Department of Government, Conflict Resolution Master of Arts Program**

In support of Prof. Peter Arbo (University of Tromsø), Spring Semester 2019. *Andrew E. and G. Norman Wigeland Fund*

## INTERNSHIPS & TRAINING



—ASF INTERN GRY VOSS IN CLEVELAND—IMAGE COURTESY GRY VOSS

The American-Scandinavian Foundation's Internship and Training programs facilitate cultural and educational exchange between the United States and the five Nordic countries. During the two-year period covered by this report, ASF welcomed 187 young Scandinavians to the U.S. to participate in internship and training programs in 23 states and Washington DC and the U.S. Virgin Islands



—OSCAR BRASK AT CHARLOTTE MOTOR SPEEDWAY— IMAGE COURTESY OSCAR BRASK

Designated by the U.S. Department of State, ASF provides J-1 visa sponsorship for these ambitious applicants, making it possible for them to acquire on-the-job experience and gain new skills and knowledge. ASF has welcomed more than 16,000 program participants since initiating this program in 1949.

Scandinavian interns and trainees gain valuable professional experience and build beneficial relationships, while learning American business techniques to be applied in their home countries. Students and young professionals participate in a wide range of fields from architecture, fashion design, and marketing to industrial and computer engineering. Each participant is welcomed by the host company as a member of its team and receives a direct, personal introduction to American practices in his or her professional field.

ASF is grateful to the many American businesses and organizations that have made it possible for these interns and trainees to have this experience. ASF is proud to continue its support of these motivated individuals and wishes past, current, and future participants continued success in their endeavors.

### FROM ASF INTERNS & HOST FIRMS

*"This program has had a great impact on me, not only as a future architect but also as a person. I learned about the American spirit of wanting to help (through) the concept of pro bono, charity and fundraising. As a Swedish architecture student, my classmates and I are all taught to appreciate a similar aesthetic — working with design in another country makes you question your decisions."*

—Anna Grundmark, SHKS Architects (Seattle, WA)

*"To be on the front line with a lot of responsibilities is something that will later put me ahead, I also worked in another culture, which gave me new ideas that will benefit me when I get a job — I'll have more to bring and give to a company."*

—Ali Kayambi, Washington Timbers Football Club (Vancouver, WA)

*"I gained knowledge of operating an American automotive dealership, and learned a lot about the use of parameters and technology that Danish dealerships have difficulty handling. I also had the freedom to choose the subjects I found interesting and useful."*

—Jakob Casper Aaløse, Phillips Auto (Newport Beach, CA)

*"Without a doubt, this has been the most exciting time of my life, I have learned so much both professionally and personally. I couldn't recommend it enough."*

—Belmin Dervisevic, BISON (Boston, MA)

### TO APPLY

Visit [amscan.org/internships-and-training](http://amscan.org/internships-and-training) for more information and guidelines on how to apply for J-1 visa sponsorship through the American-Scandinavian Foundation's Internship & Training Programs.



## INTERNSHIPS & TRAINING CONTINUED

### HOST FIRMS IN THE UNITED STATES

Over the course of this report ASF sponsored J-1 visas for interns and trainees in twenty-seven states. Many of the host firms listed below have ongoing relationships with ASF and regularly offer internship and training positions to Scandinavians.



—CORNELIA FRANZEN—IMAGE COURTESY CORNELIA FRANZEN

#### Alabama

Hydratech Industries

#### California

Phillips Auto, Trusted Insight, Innovation Norway, ALOM Technologies Corporation, Richardson Oliver Insights LLC, Republic of Fritz Hansen, ATUM, EkiTravel, Avalex Civil Engineering and Environmental Services, Host Compliance, LLC, Rios Clementi Hail Studios, The Music Box, Martensen Wright PC, As You Sow Foundation, Logonet USA Inc., Monte Stott & Associates Inc., NASA Ames Research Center, Pacific Advanced Civil Engineering, Inc., Charlap Hyman & Herrero, Omgivning, Inc., UniversalGiving,



—MIKA TOMPURI—IMAGE COURTESY OF MIKA TOMPURI

#### Colorado

Vestas Wind Systems A/S

#### Connecticut

Ultrabulk A/S

#### District of Columbia

DSPolitical, Partnership for Global Security, American Enterprise Institute



—FREDRIK INGELSSON—IMAGE COURTESY OF FREDRIK INGELSSON

#### Florida

Amerden AGVS, Honorary Consulate of Finland, The Finnish American Chamber of Commerce, EkiTravels

#### Georgia

RELEX Solutions Inc., SpacePole Inc.

#### Illinois

Cramer-Krasselt, Myefski Architects, Techstars, Swedish-American Museum

#### Iowa

Museum of Danish America



—RENÉE GYLLENSVAAN—IMAGE COURTESY OF RENÉE GYLLENSVAAN

#### Maryland

NVI, Inc.

#### Massachusetts

Brigham and Women's Hospital, Boston Illiquid Securities Offering Network Inc. (BISON), Bolt Depot, Inc., Herb Chambers Dealerships, Albireo Pharma

#### Michigan

Finnish American Heritage Center, FEV North America Inc., The Finnish American Reporter,

#### Montana

Hygge Coffee

#### New Hampshire

ECCO USA, Inc.

#### New Jersey

SKIM Analytical Inc., Rema Tip Top North America Inc., Transgroup Global Logistics,



—ANDERS GRINDE—PHOTO COURTESY ANDERS GRINDE

### New York

Derek Lam, Samantha Chang, Finnish Cultural Institute, Tigerrisk, Daniel Shea Studio, Søren Rose Studio, Confederation of Danish Industry, Scorpio Tankers Inc., Roberts Capital Advisors, Scandinavian Tourism Inc., Marimekko, BTS USA, Inc., Henning Larsen, Linkfire Inc., Work AC, Document Journal, Winston & Strawn LLP, Gradient Architecture, The Swedish American Chamber of Commerce Inc., H5Property, OMA New York, Bradbury Lewis, Prive Group, The Front, Blank Rome LLP, Interact Marketing, Style Council, Jenner & Block LLP, Craftsman+, Amcham Finland Inc., GrowthWheel International Inc., Bruce + Hansen LLC, Office Magazine, Apartmento Studios Inc., Proenza Schouler, Kate Spade New York, Community Connections for Youth, Inc., VisitDenmark, SAP America Inc., Innovation Norway, La Scuola d'Italia, Religions for Peace, 138 productions, StudioMDA, Scandinavia House

### North Carolina

PE Geometry Inc., American Forest Management, Xdin Inc.



—OSCAR BRASK AND FABIAN BENGTSSON—COURTESY FABIAN BENGTSSON

### Ohio

Coulter Ventures d.b.a. Rogue Fitness, Cleveland Public Theater

### Pennsylvania

Freedom Auto Group

### Rhode Island

Toci, Retail Solutions Inc.

### South Carolina

Outokumpu

### Tennessee

Triple 8 Management

### Texas

Game On Arena Sports, Ewing Industrial Services, LLC, Pacific Summit Energy LLC, Schlumberger Technology Corporation

### Washington

American Forest Management, Host Compliance, LLC, Washington Timbers Football Club,

### U.S. Virgin Islands

Blak Corporation

## MORE FROM ASF INTERNS

*"[During my ASF Internship] I worked as a researcher in planetary exploration for the Intelligent Robotics Group (IRG) at the NASA Ames Research Center; my primary duty was the development of a 3D microscopy system suitable for this task, by making it a small and lightweight device. [It was] a great experience working for NASA and getting to know the people at work, and nature around the Bay Area is incredible"*—**Gustav Petterson, NASA Ames Research Center (Mountain View, CA)**



—CHRISTOFFER SØRGÅRD—PHOTO COURTESY CHRISTOFFER SØRGÅRD

*"I had a field engineering position where I followed and supported a working field engineer on a drilling site. Schlumberger is a great host company and the field engineering internship is a rewarding and educational experience."*—**Christoffer Sørgård at Schlumberger Technology Corporation in Stafford, TX**

*"[Agari Data] has a very clear vision, mission and the problem is well-defined. I made friends for life there. People are smart, ambitious, and all pull in the same direction."*—**Johan Gustafsson at Agari Data, Inc. in Foster City, CA**

*"This opportunity has truly been an eye-opener and life changing for me."*—**Andrea Quaade, DIBD NYC Inc. (Brooklyn, NY)**



## SCANDINAVIA HOUSE PROGRAMS



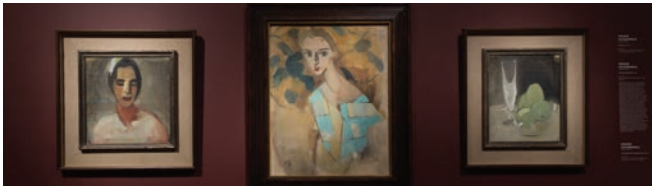
—**INDEPENDENT VISIONS: HELENE SCHJERFBECK AND HER CONTEMPORARIES**—IMAGE BY CHRISTINE BUTLER

Each year the American-Scandinavian Foundation presents more than 150 cultural and educational programs at Scandinavia House: The Nordic Center in America. In addition to serving as the headquarters for ASF, Scandinavia House is a showcase for Nordic culture and a forum for the exchange of ideas and information.

### EXHIBITIONS

The American-Scandinavian Foundation presents museum-quality exhibitions at Scandinavia House that highlight excellent artistic achievements in the Nordic countries, covering both historical and contemporary subjects in a wide variety of media.

Exhibitions at Scandinavia House are presented in the third floor galleries: Stolt-Nielsen Gallery; Inger G. and William Ginsberg Gallery; Hartvig and Olette Gundersen Gallery; and Leif Höegh Gallery.



—**INDEPENDENT VISIONS**—PHOTO BY EILEEN TRAVELL/ASF

**Independent Visions: Helene Schjerfbeck and Her Contemporaries, from the Collection of Ateneum, Finnish National Gallery**  
**FRI—4-29-2017 THROUGH SAT—10-7-2017**

*Independent Visions*, an exhibition presenting 55 works by four celebrated Finnish artists, highlighted their pioneering role at the end of the 19th century and in the early decades of the 20th century: Helene Schjerfbeck (1862–1946), Sigrid Schauman (1877–1979),

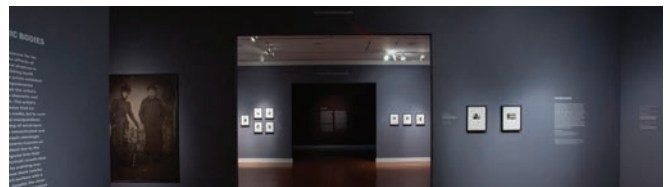
Ellen Thesleff (1869–1954), and Elga Sesemann (1922–2007). Coinciding with the year-long celebration of the centennial anniversary of Finland’s independence from Russia, the exhibition provided a rich opportunity for American audiences to engage with these influential Finnish painters.



—**THE EXPERIMENTAL SELF**—PHOTO BY EILEEN TRAVELL/ASF

**The Experimental Self: Edvard Munch’s Photography**  
**TUE—11-21-2017 THROUGH SAT—4-7-2018**

*The Experimental Self: Edvard Munch’s Photography* brought the photographic work of the master painter to NYC for its first showing in the U.S. This exhibition of photographs, films, and a small selection of prints by Edvard Munch emphasizes the artist’s experimentalism, examining his exploration of the camera as an expressive medium. By probing and exploiting the dynamics of “faulty” practice, such as distortion, blurred motion, eccentric camera angles, and other photographic “mistakes,” Munch photographed himself and his immediate environment in ways that rendered them poetic. In both still images and in his few forays with a hand-held moving-picture camera, Munch not only archived images, but invented them.



—**THE EXPERIMENTAL SELF**—PHOTO BY EILEEN TRAVELL/ASF(SOMMERDAG)

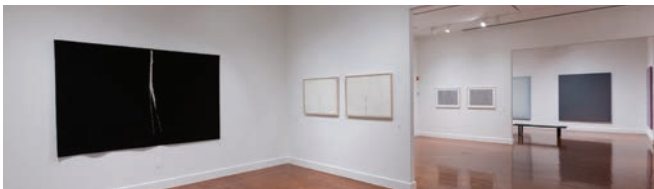


—OPENING PARTY OF *LEGO® BRICKS: A CELEBRATION!*—PHOTO BY CHRISTINE BUTLER/ASF

### **LEGO® Bricks: A Celebration!**

**SAT—10-13-2018 THROUGH SAT—1-12-19**

To mark the 60th anniversary of the LEGO® brick, ASF presented an exhibition saluting the LEGO Group as a leader of learning through play, *LEGO® Bricks: A Celebration!* Featuring sculptures, mosaics, and interactive play zones by renowned LEGO® Certified Professional artist Sean Kenney, the exhibition included an overview of the LEGO Group's history and educational mission, as well as a variety of children's workshops at Scandinavia House. Exploring how free play enables children to develop their imagination, the exhibition featured array of sculptures and wall pieces by Brooklyn-based artist Sean Kenney, featuring iconic architecture, patterns inspired by the Moorish tiles of southern Spain, and a series of works dedicated to exploring the interconnectedness of nature. An interactive play zone with 30,000 loose LEGO bricks enabled builders of all ages to explore the creative potential of their imagination. The exhibition opened with a celebration that brought hundreds of visitors to Scandinavia House, with lines around the block circling the building.



—*LIGHT LINES*—PHOTO BY EILEEN TRAVELL/ASF(SOMMERDAG)

### **Light Lines: The Art of Jan Groth, Inger Johanne Grytting, and Thomas Pihl**

**SAT—10-13-2018 THROUGH SAT—1-12-19**

*Light Lines* celebrated three Norwegian artists who have influenced and continue to influence one another with work that employs the power of the reductive, sharing close ties to the New York community, and representing three generations: Jan Groth (b.1938), Inger Johanne Grytting (b.1949) and Thomas Pihl (b.1964). Considered the foremost Norwegian artist of his generation, Jan Groth has continuously explored the relationship between line and picture plane. Exhibited extensively throughout his career with major exhibitions

including a large-scale retrospective at The Guggenheim Museum in New York, Groth's influence and presence has been widespread both in the Nordic countries and internationally. In his relationships with Grytting and Pihl, the artists share a combined interest in a minimalist, restrained, and conceptual language, while their three practices remain distinctly individual. Featuring a site-specific installation by Groth, each room in the gallery was dedicated to one artist, enabling visitors to experience a body of work while creating connections to the exhibition and artists as a whole.



—*NORDIC IMPRESSIONS*—PHOTO BY EILEEN TRAVELL/ASF(SOMMERDAG)

### **Nordic Impressions: Contemporary Art from Åland, Denmark, Finland, Greenland, Iceland, Norway, and Sweden**

**SAT—2-23-19 THROUGH SAT—6-8-19**

*Nordic Impressions* brought together a wide array of artistic expressions—paintings, drawings, photographs, installations, films, and videos—that reflect the rich diversity and global character of Nordic art. Curated by Phillips Collection Chief Curator and Deputy Director for Academic Affairs Klaus Ottmann, the exhibition featured works by internationally acclaimed artists such as Olafur Eliasson, Katrín Sigurdardóttir, Ragnar Kjartansson, and Hrafnhildur Arnardóttir / Shoplifter from Iceland; Israeli-born Danish painter Tal R, Danish artist collaborative SUPERFLEX, and artists Jesper Just and Per Kirkeby; Norwegian performance and video artist Tori Wrånes and photographer Torbjørn Røddland; Finnish artist Eija-Liisa Ahtila; Swedish painter Mamma Andersson and video and mixed-media artist Nathalie Djurberg; Sámi artists Outi Pieski and Britta Marakatt-Labba; Greenlandic painter, photographer, and writer Pia Aarke; and others. Made across a spectrum of media from locations throughout the Nordic region, the works in the exhibition each offer a different artistic experience while being tied across themes that have held a special place in Nordic culture, including historic themes such as light and darkness and more contemporary themes.



—OPENING PARTY OF *NORDIC IMPRESSIONS*—PHOTO BY CHRISTINE BUTLER/ASF

## SCANDINAVIA HOUSE PROGRAMS CONTINUED



—VICTOR BORGE HALL, SCANDINAVIA HOUSE—IMAGE BY EILEEN TRAVELL/ASF

### FILMS

ASF regularly held film screenings at Scandinavia House including annual presentations of New Nordic Cinema and Nordic Oscar contenders, along with the consistently popular Nordic Noir crime series and exhibition-related films. Films are held in Victor Borge Hall, named in honor of the legendary Danish entertainer in recognition of his unwavering devotion to Scandinavian culture and his generosity to Scandinavia House.

#### **The Oath /Eiðrinn** **WED-9-6-2017**



—THE OATH

#### **Valkyrien** **WED-9-13-2017 THROUGH FRI - 10-6-2017** Episodes 1-8

#### **Nordic International Film Festival** **THU-10-12-2017 THROUGH SAT-10-14-2017**

*Narrative Shorts*  
*Documentary Shorts*  
*Man and A Baby*  
*Quit Staring At My Plate*  
*Waiting for The Sun*  
*Nothing But The Wind*  
*Baker-Man*  
*69 Minutes of 86 Days*  
*The Strange Ones*  
*A Modern Man*  
*Nordic Shorts A*  
*Nordic Shorts B*

#### **Modus** **WED - 10-18-2017 & SAT - 10-21-2017**



—GOLD DIGGER

#### **New Finnish Cinema** **WED-10-25-2017 THROUGH FRI-12-1-2017**

*Little Wing /Tyttö nimeltä varpu*  
*Absolution /Henkesi edestä*  
*Gold Digger /Onnenonkija*  
*Born In Heinola /Teit meistä kauniin*  
*Love and Fury /Syysprinssi*

#### **The Square** **THU-10-26-2017**



—THE SQUARE

#### **Unknown Soldier /Tuntematon sotilas** **SAT-12-2-2017**

#### **Tatu and Patu: A Finnish Children's Film** **SAT-12-9-2017**

#### **Nordic Oscar Contenders** **WED-1-3-2018 THROUGH THU-1-18-2018**

*November*  
*You Disappear /Du forsvinder*  
*Under The Tree /Undir trénu*  
*Tom of Finland*  
*Thelma*  
*The Square*

#### **The Swedish Challenge: Silent Cinema** **THU-1-25-2018 THROUGH SAT-2-3-2018**

*A Norway Lass /Synnöve solbakken*  
*A Mother's Fight /Thora van deken*  
*Gypsy Anne /Fante-Anne*  
*Love's Crucible /Vem dömer*  
*Anna-Liisa*



—A NORWAY LASS



*The House of Shadows /Morænen*  
*The Bride of Glomdal /Glomdalsbruden*

### Hits from the North

**WED-2-7-2018 THROUGH FRI-3-9-2018**

*The King's Choice /Kongens nei*  
*Land of Mine /Under sandet*  
*The Nile Hilton Incident*  
*Heartstone /Hjartasteinn*  
*The Other Side of Hope /Toivan tuolla puolen*

### Double Feature with Ruben Östlund

**TUE-2-20-2018**

*Force Majeure*  
*The Square*

### New York International Children's Film Festival

**SAT-2-24-2018, 3-3-2018, 3-10-2018, & 3-17-2018**



—MIAMI

### New Nordic Cinema

**FRI-3-14-2018 THROUGH FRI-5-4-2018**

*The Rift /Rökkur*  
*Miami*  
*Walk with Me /De standhaftige*  
*The Giant /Jätten*  
*Framing Mom /Rosemari*  
*Cruelty /Grimmd*  
*Going West /Rett vest*  
*The Day Will Come /Der kommer en dag*

### Edvard Munch by Peter Watkins

**TUE-3-20-2018 & TUE-3-27-2018**

### Sonica Sequence Film and Performance

**THU-5-3-2018**

### Football For Better or Worse

**TUE-5-22-2018**

### Norskov

**WED-6-6-2018 THROUGH FRI-6-22-2018**

Season 2 Episodes 1-6



—NORSKOV

### Siri Derkert Trilogy

**TUE-6-19-2018**

Film screening and discussion with dancer/  
 choreographer Teresia Björk



—UNDER THE TREE

### Under The Tree /Undir trénu

**TUE-6-26-2018**

### Manners /Mannasiðir

**WED-6-27-2018 & THU-6-28-2018**

### Prisoners /Fangar

**WED-7-11-2018 THROUGH THU-7-26-2018**

Episodes 1-6

### Icelandic Film in Focus

**THU-9-20-2018 THROUGH TUE-11-27-2018**

*At Noon Fell A Darkness*  
*I Remember You /Ég man þig*  
*The Swan /Svanurinn*



—PERSONA

### Ingmar Bergman: A Tribute in Film

**WED-9-26-2018 THROUGH SAT-10-13-2018**

*Ullmann On Bergman: An Evening with Liv Ullmann & Saraband*  
*Smiles of A Summer Night /Sommarnattens leende*  
*Wild Strawberries/Smultronstället*  
*The Magician*  
*Ingmar Bergman Through The Choreographer's Eye*  
*The Virgin Spring /Jungfrukällan*  
*Through A Glass Darkly /Såsom i en spegel*  
*Persona*

### A Good Week for Democracy

**WED-10-17-2018**



## SCANDINAVIA HOUSE PROGRAMS CONTINUED



—EASTERN MEMORIES

### FILMS—CONTINUED

#### New York Baltic Film Festival

**THU-10-18-2018 THROUGH SUN-10-21-2018**

*The Devil's Bride with White Bells*

*511 Best Photographs From Mars*

*Being Young Short Films*

*The Dissidents*

*Mother, I Love You*

*Eastern Memories*

*When We Talk About The KGB & Running Lights*

*Rodeo & Manivald*

*Wonderful Losers: A Different World*

*Merija's Journey*

*Baltic Tribes*

*Together For Ever with The Esperance of Will & Ice*



—THICK SKIN (ICELAND IN NEW YORK)

#### Iceland in New York

**WED-10-24-2018**

#### Shortfish Film Festival

**FRI-10-26-2018**



—VITAMIN C (SHORTFISH FILM FESTIVAL)

#### Nordic International Film Festival 2018

**WED-10-31-2018 THROUGH SUN-11-4-2018**

*Documentary Shorts*

*Narrative Shorts*

*Holiday*

*Letters*

*Tiger Milk*

*Nina*

*Obey*

*A Moment in the Reeds*

*Vianey*

*Nordic Shorts A*

*Nordic Shorts B*

*Danmark*

*Night Child*



—BECOMING ASTRID

#### Becoming Astrid /Unga Astrid

**THU-11-15-2018**

#### Soviet Hippies /Nõukogude lillelapsed

**TUE-11-27-2018**

#### Across The Waters /Fuglene over sundet

**WED-11-28-2018 & FRI - 11-30-2018**

#### Moomins and The Winter Wonderland

**SAT-12-8-2018**



—MOOMINS AND THE WINTER WONDERLAND

#### Nordic & Baltic Oscar Contenders

**THU-1-3-2019 THROUGH FRI-1-18-2019**

*The Guilty /Den skyldige*

*Euthanizer /Armomurhaaja*

*To Be Continued /Turpinājums*

*Woman At War /Kona fer í stríð*

*Take It Or Leave It /Võta või jäta*

*Border /Gräns*

*What Will People Say /Hva vil folk si*



—THE LUMBERJACK'S WIFE

### Lumberjacks and Logrollers

**WED-1-23-2019 THROUGH FRI-2-1-2019**

*The Lumberjack's Bride /Koskenlaskijan morsian*

*The Song of the Scarlet Flower /Laulu tulipunaisesta kukasta*

*Two Old Lumberjacks /Kaksi vanhaa tukkijätäkää*

*The Day The Earth Froze /Sampo*

### Homo Novus

**SAT-1-26-2019**

#### Across Borders

**WED-2-6-2019 THROUGH FRI-3-1-2019**

*Eternal Road /Ikkitie*

*Strawberry Days /Jordgubbslandet*

*The Return*

*The Charmer /Charmøren*



—ETERNAL ROAD—IMAGE BY ANDRES TEISS

### Rüta

**TUE-2-12-2019**

#### Becoming Astrid /Unga Astrid

**WED-3-6-2019 & FRI-3-8-2019**

#### New York International Children's Film Festival

**SAT-2-23-2019, 3-9-2019 & 3-16-2019**

Multiple Screenings



—AILO (NYICFF)

### New Nordic Cinema

**WED-3-20-2019 THROUGH FRI-5-3-2019**

*Wonderland /Joulumaa*

*Mihkel /Undir halastjörnu*

*The Quake /Skjelvet*

*The 12th Man /Den 12. mann*

*A Fortunate Man /Lykke Per*

*Darling*

*A Moon of My Own /Ted: För kärlekens skull*



—DARLING

### Estonian Cultural Days

**THU-4-4-2019**

*The Wind Sculpted Land /Tuulte tahatud maa*

*The Manslayer /The Virgin /The Shadow (Mehetapja / Süütu /Vari)*



—ANIARA

### Aniara

**MON-5-13-2019**

#### Focus On Norway

**WED-6-12-2019 THROUGH FRI-6-28-2019**

*Utøya: July 22 /22. Juli*

*Handle with Care /Hjertestarter*

*The Rules For Everything /Løperen og hesten*



—HANDLE WITH CARE

## SCANDINAVIA HOUSE PROGRAMS CONTINUED

### MUSIC & PERFORMING ARTS

Music programs at Scandinavia House are intended to present a wide variety of performers and genres to a New York audience. Programs in the last two years included classical, chamber, and operatic performances, along with presentations of contemporary works and a regular summer jazz series. Performers include regulars at Scandinavia House such as Swedish pianist Per Tengstrand, as well as a number of visiting performers from the Nordic countries, and Fellows who are in the U.S. studying music with support from the ASF. Performing arts include occasional dance programs or staged theater readings.

#### Summer Jazz Series 2017

**THU-7-6-2017, 7-13-2017, 7-20-2017, & 7-27-2017**

Lingonberry Twig in a Cocktail Glass featuring Sirtip Phasuk  
Lage Lund  
Sigmar Þór Matthiasson Trio  
Christian Winther



—LAGE LUND—IMAGE BY JERRY KATZ

#### Keyboard Conversations® with Jeffrey Siegel | 2017-2018

**THU-9-28-2017, 1-11-2018, 3-1-2018, & 5-10-2018**

*Celebrating Leonard Bernstein*  
*Edvard Grieg and his World*  
*The Exotic Music of the Night*  
*Bach and Chopin—A Musical Kinship*

#### Enter The Echo Drift

**THU-10-5-2017**

#### Pale Air (Oscillating) Music by Kristofer Svensson

**TUE-10-17-2017**

#### Uppsala University Chamber Ensemble

**TUE-11-7-2017**

#### Connections: Finland—All Generations with Ensemble mise-en

**THU-11-9-2017**

**Sibelius Inspiration with Jussi Makkonen and Nazig Azezian**  
**SAT-11-11-2017**

#### Holiday Concert

**SUN-12-10-2017**

With the Swedish Church Choir in New York

#### Estonian Voices

**SAT-1-13-2018**

#### Icelandic Composer Collective Errata Series Featuring Loadbang and Tak Ensemble

**FRI-1-19-2018 & SUN-1-21-2018**

#### From Bach to Brahms! with Langley-Suran Duo

**TUE-2-13-2018**

#### Stanley Samuelson Folk Songs from The Faroe Islands

**THU-2-22-2018**

#### Kalevala: The Musical in Concert with Johanna Telander

**MON-3-5-2018**



—MUSIC ON PARK AVENUE—IMAGE COURTESY OF PER TENGSTRAND

#### Music on Park Avenue with Per Tengstrand | Spring 2018

**THU-3-22-2018, 3-29-2018, & 4-19-2018**

*The Hammerklavier: The Unplayable Sonata /The Complete Beethoven Sonatas*  
*Farewell to the Piano: The Last Sonata /The Complete Beethoven Sonatas*  
*Mozart and Brahms /with Opus 21*

#### Quiescence

**THU-4-5-2018**

#### New Tide Orquesta

**SAT-4-7-2018**

#### Edvard Grieg's String Quartets with Quartetto Testosterone

**TUE-4-17-2018**

#### Trio Vitruvi

**THU-4-26-2018**



—TRIO VITRUVI





—JFDR

**Sonica Sequence Film and Performance**

**THU-5-3-2018**

**JFDR with Jófríður**

**FRI - 5-11-2018**

**Juho Pohjonen**

**TUE-5-15-2018**

**Summer Jazz Series 2018**

**THU-6-7-2018, 6-14-2018, 6-21-2018, 6-28-2018,  
7-12-2018, & 7-19-2018**

Northbound

Helle Henning Quartet

Kaisa's Machine

Thomas Strønen's Time is a Blind Guide

Anni Koski

Oskar Stenmark Quartet

**Jepokryddona**

**MON-6-18-2018**



—JEPOKRYDDONA—PHOTO BY OVE LILLAS

**mise-en Festival**

**FRI-6-29-2018**

**Keyboard Conversations® with Jeffery Siegel | 2018-2019**

**THU-9-27-2018, 1-24-2019, 3-14-2019, & 5-2-2019**

*Commemorating Rachmaninoff & Debussy*

*Northern Neighbors*

*Joyous Beethoven*

*Fascinating Rhythms*

**Lana Suran**

**THU-10-4-2018**

**Translucent Harmonies with andPlay**

**TUE-10-23-2018**

**Music on Park Avenue with Per Tengstrand & Opus 21 | 2018-  
2019 THU-10-25, 11-10, 11-29-2018, 1-17, 2-28, & 3-28-2019**

*Beethoven Concerto No. 1*

*Beethoven Concerto No. 2*

*Beethoven Concerto No. 3*

*Solo Performance*

*Beethoven Concerto No. 4*

*Beethoven Concerto No. 5*

**Holiday Concert**

**SUN-12-9-2018**

With the Swedish Church Choir in New York

**Bridge of Song**

**THU-1-10-2019**

**ASF Fellow Concert Geirþrúður Anna Guðmundsdóttir**

**THU-3-7-2019**

**Ensemble Neon**

**TUE-3-19-2019**

**Arctic 5**

**THU-4-11-2019**

**Ana Egge and The Sentimentals**

**THU-4-25-2019**



—MARI KALKUN

**Danish Clarinet Trio**

**THU-5-9-2019**

**Mari Kalkun**

**TUE-5-14-2019**

**Ensemble mise-en Portrait of Pelle Gudmundsen-  
Holmgreen**

**THU-5-16-2019**

**Our Boy**

**THU-5-30-2019**

**Summer Jazz Series 2019**

**THU-6-20-2019, MON-6-24-2019, TUE-6-25-2019, &  
THU-6-27-2019**

Sigmar Matthíasson's ÁRÓRA

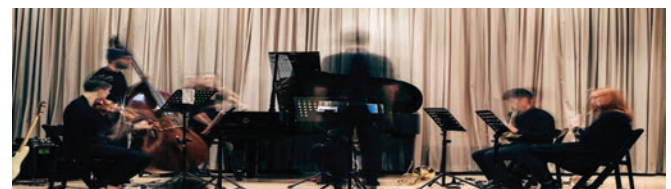
Mikkel Ploug Trio

Kari Ikonen Trio

Thomas Backman

**mise-en Festival**

**SAT-6-29-2019**



—MISE-EN



## SCANDINAVIA HOUSE PROGRAMS CONTINUED

### LECTURES & LITERARY

Lectures and literary events at Scandinavia House continue to bring audiences together to explore and discuss a wide range of subjects and issues. These ranged from Arctic governance and the Finnish education model to the Vikings in North America, Nordic design, and the future of the Icelandic language. Book talks featured works by contemporary and classical authors, and on subjects including contemporary fiction to the arts and public affairs. Lectures were also presented in conjunction with major exhibitions.



—NORDIC NOIR BOOK CLUB

#### Nordic Noir Book Club | Summer 2017

MON-7-10-2017, 8-7-2017

*I'm Traveling Alone* by Samuel Bjørk  
*The Ice Beneath Her* by Camilla Grebe

#### Knots

Book Talk with Gunnhild Øyehaug  
TUE-7-11-2017

#### Amatka

Book Talk with Karin Tidbeck  
TUE-7-18-2017

#### Nordic Book Club | 2017-2018

TUE-7-25-2017 THROUGH TUE-8-28-2018

*The White City* by Karolina Ramqvist  
*Tómas Jónsson, Bestseller* by Guðbergur Bergsson  
*Justine* by Iben Mondrup  
*Norma* by Sofi Occasion  
*Amatka* by Karin Tidbeck  
*The History of Bees* by Maja Lunde  
*Leona, The Die Is Cast* by Jenny Rogneby  
*They Know Not What They Do* by Jussi Valtonen  
*You Disappear* by Christian Jungersen  
*Days In The History of Silence* by Merethe Lindstrom  
*The Endless Summer* by Madame Nielsen  
*Love* by Hanne Ørstavik  
*Eventide* by Therese Bohman  
*Mirror, Shoulder, Signal* by Dorthe Nors

#### Leona: The Die Is Cast

Book Talk with Jenny Rogneby  
THU-9-7-2017

#### Nordic Women Painting Race and Place

Lecture by Bart Pushaw  
MON-9-11-2017

#### The History of Bees

Book Talk with Maja Lunde  
THU-9-14-2017

#### The Half-Drowned King

Book Talk with Linnea Hartsuyker  
TUE-9-19-2017

#### The Girl Who Takes An Eye for An Eye

Book Talk with David Lagercrantz  
SAT-9-23-2017

#### Word for Word: The Cutting Edge of Literature From Helsinki to New York

TUE-9-26-2017

#### Norma

Book Talk with Sofi Oksanen  
THU-9-28-2017

#### A Difficult Death: The Life and Work of Jens Peter Jacobsen

Book Talk with Morten Høi Jensen  
MON-10-2-2017



—CREATIVE TRANSFORMATIONS PANEL

#### Creative Transformations

A panel with The Guerrilla Girls, Laura Cottingham, and Dr. Anna-Maria Von Bonsdorff  
SAT-10-7-2017

#### Love, Solitude, and The Face of Death: Poems By Edith Södergran

Book Talk with Stina Katchadourian  
TUE-11-14-2017

#### "Munch, Modernism, and Modernity" Annual Conference Marketing The North

FRI-11-17-2017 & SAT-11-18-2017

#### Silence In The Age of Noise

Book Talk with Erling Kagge  
THU-11-30-2017

**They Know Not What They Do**

Book Talk with Jussi Valtonen and Anu Partanen

**TUE-1-16-2018****Head to Head: Edvard Munch, August Strindberg, and Photographic Self-Representation****THU-1-25-2018****The Invention of Ana**

Book Talk with Mikkel Rosengaard

**TUE-2-27-2018****The Sandman: A Joona Linna Novel**

Book Talk with Lars Kepler

**TUE-3-6-2018**

—EXPERIMENTAL LENS PANEL

**Experimental Lens: Panel Moderated by Dr. Patricia Berman****SAT-3-10-2018****Third-Millennium Heart**

Book Talk with Ursula Andkjær Olsen

**MON-3-12-2018****Kristian Birkeland: The Almost Forgotten Scientist**

Lecture by Dr. Pål Brekke

**TUE-3-13-2018****The Endless Summer**

Book Talk with Mada

**THU-3-15-2018****Cruel is the Night**

Book Talk with Karo Hämäläinen

**MON-4-30-2018****The Life and Works of Karl Marx**

Book Talk with Sven-Eric Liedman

**TUE-5-1-2018****Encircling: Books 1 & 2**

Book Talk with Carl Frode Tiller

**THU-5-3-2018****Stormwarning**

Book Talk with Kristín Svava Tómasdóttir

**MON-5-7-2018****From Vikings to Vinland**

Lecture by Nicholas R. Bell

**TUE-5-8-2018**

—CURTIS L. CARLSON DISTINGUISHED LECTURE WITH H.E. PRESIDENT GUÐNI TH. JÓHANNESSON

**H.E. President Guðni Th. Jóhannesson of Iceland**

Curtis L. Carlson Distinguished Lecture

**WED-5-9-2018****Bodil Kjær: Reflections On Design**

An Ambassador Edward E. and Susie Elson Lecture

**WED-5-23-2018****Nordic Noir Book Club | Summer 2018****TUE-6-12-2018, 7-10-2018***The Undesired* by Yrsa Sigurdardóttir*Three Dog Night* by Elsebeth Egholm**Havoc**

Book Talk with Morten Høi Jensen

**TUE-6-12-2018****Daughter of the Cold War**

Book Talk with Grace Kennan Warnecke

**THU-6-14-2018****Nordic Noir Book Club | Fall 2018****TUE-9-11-2018 THROUGH TUE-12-11-2018***Baboon* by Naja Marie Aidt*Odd Numbers* by Anne Holt*The Girl in the Woods* by Camilla Läckberg*Below the Surface* by Leena Lehtolainen**Swedish Universities in New York Study in Sweden****THU-9-13-2018****The Improvisatore: A Novel of Italy**

Book Talk on Hans Christian Andersen with Frank Hugus

**TUE-9-18-2018****Öræfi: The Wasteland**

Book Talk with Ófeigur Sigurðsson

**TUE-10-9-2018****What We Owe**

Book Talk with Golnaz Hashemzadeh Bonde

**TUE-10-16-2018****Cultural (Ex)Change – Globalism, Transformation, and Popularization TUE-10-30, MON-11-5, & THU-11-15-2018**

Body Politics of Globalization Talk with Tuija Parikka

Building Community Through Textile Arts Talk with Sallie Anna Steiner

In the Pursuit of Happiness: African Americans in

Denmark Talk with Ethelene Whitmire

## SCANDINAVIA HOUSE PROGRAMS CONTINUED

### LECTURES & LITERARY—CONTINUED

#### The Nordic Baking Book

Book Talk with Magnus Nilsson

THU-11-8-2018

#### Nordic Book Club | 2019

TUE-1-29-2019 THROUGH TUE-6-25-2019

*Wait, Blink* by Gunnhild Øyehaug

*What We Owe* by Golnaz Hashemzadeh Bonde

*Oneiron* by Laura Lindstedt

*Last Night In Nuuk* by Niviaq Korneliusen

*Children of God* by Lars Petter Sveen

*Crossing* by Pajtim Statovci

#### Digital Dynamics in Nordic Contemporary Art Book

Talk & Performance with Tanya Toft Ag and Artists

Lundahl & Seidl

SAT-2-23-2019

#### This Life: Secular Faith and Spiritual Freedom

Book Talk with Swedish Philosopher and Author Martin Hägglund

TUE-3-5-2019

#### Nordic Impressions

Panel Discussion with Marthe Thorshaug, Anneé

Olofsson, and Dr. Klaus Ottmann

SAT-3-9-2019

#### The Nordic Model: Finland and Education

Chairman's Lecture Series

WED-3-13-2019

#### Approaches to Immigration in Scandinavia and the U.S.

Nordic Journalists Panel Discussion

TUE-3-26-2019

#### Ensuring the "Good Childhood" in a World of Cultural and Technological Change

Early Childhood Symposium

FRI-4-5-2019 THROUGH SAT-4-6-2019

#### Crossing

Book Talk with Pajtim Statovci

MON-4-8-2019

#### Astroecology

Book Talk with Johannes Heldén

TUE - 4-9-2019

#### Hilma af Klint: Future Now

SAT-4-13-2019

#### Henrik Pontoppidan's *Lucky Per*

Book Talk with Garth Risk Hallberg and Morten Høi

Jensen

TUE-4-16-2019

#### Walking: One Step at a Time

Book Talk with Erling Kagge

MON-4-29-2019

#### Arctic Governance – An Example for Other Regions?

ASF Visiting Lecture with Peter Arbo

MON-5-6-2019

#### The Future of Time

Talk with Bjarke Ingels and Andri Snær Magnason

TUE-5-7-2019

### KIDS & FAMILIES

Scandinavia House features regular programs for children and families, including weekly access to the Heimbold Family Children's Playing and Learning Center, a colorful, welcoming environment where children and their caregivers can learn about the history and culture of Scandinavia through books, toys, costumes, and workshops. Other children's programs celebrated Nordic heritage and culture through music, films, performances, and interactive workshops.



—WEDNESDAY WORKSHOPS IN THE CHILDREN'S CENTER

#### Wednesday Workshops

WEDNESDAYS—Ongoing

#### Puppet Playtime

THURSDAYS—Ongoing

#### Saturday Morning Storytelling

With the Hans Christian Andersen Storytellers

SATURDAYS—Ongoing

#### Saturday Art Workshops

SATURDAYS—Ongoing

#### Puppet Playtime with Nicola McEldowney

THURSDAYS—Ongoing

#### Knitting Club

THURSDAYS—Ongoing

**Independent Visions Exhibition Workshops**

SAT-9-9-2017, 9-16-2017, &amp; 9-23-2017

**Finn Fun Day: A Celebration of Finland's Centennial**

SAT-9-30-2017

**Yes, Chef! An Afternoon with Chef Marcus Samuelsson**

SUN-10-15-2017



-BOULEVARDTEATERN-IMAGE BY HERTTA NILSSON/ASF

**Guji Guji – A Very Special Duck by Boulevardteatern**

SAT-10-28-2017

**Swedish Children's Christmas Workshop**

SAT-12-2-2017

**Tatu and Patu: A Finnish Children's Film**

SAT-12-9-2017

**Saint Lucia Workshop**

SAT-12-16-2017

**New York International Children's Film Festival |****Multiple Screenings**

SAT-2-24-2018 THROUGH SAT-3-17-2018

**Opening Party: LEGO® Bricks A Celebration!**

SAT-4-28-2018

**Art Workshop: Lego® Hybrid Sculptures with Artists****Pekka & Teija Isorättä**

SAT-6-2-2018

**Art Workshop: Lego® Brick Portraits**

SAT-6-9-2018 &amp; SAT-6-16-2018

**Family Midsummer Celebration**

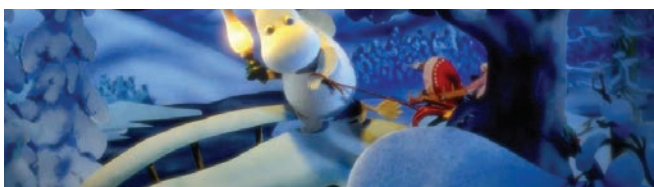
SAT-6-23-2018

**Nordic Christmas**

SAT-12-1-2018

**Moomins and The Winter Wonderland**

SAT-12-8-2018



-MOOMINS AND THE WINTER WONDERLAND



-SKOPPA AND SKRITLA-IMAGE BY HERTTA NILSSON/ASF

**Saint Lucia Workshop**

SAT-12-15-2018

**Skoppa and Skritla's Icelandic Christmas**

SAT-12-15-2018

**New York International Children's Film Festival | Multiple Screenings**

SAT-2-23-2019 THROUGH SAT-3-16-2019

**Fastelavn Workshop**

SAT-3-2-2019

**Adult Art Workshop**

SAT-3-20-2019, 4-13-2019, and 5-14-2019

*Eurotrash Trolls: Soft Sculpture Marionettes**Drawing in the Gallery**Nordic Impressions: The Ex-School: Exquisite Corpse***Family Midsummer Celebration**

THU-6-20-2019

**SCANDINAVIA HOUSE PROGRAM FUNDS**

The following funds, held by the ASF on a long-term basis, provide support for Scandinavia House programs:

The Louise and Karl Andren Fund for Musical Performance

- The Bonnier Family Fund for Contemporary Art
- The Victor Borge Hall Endowment Fund
- The Curtis L. Carlson Distinguished Lecture Series Fund
- The Lynn Carter Fund
- The Centennial/Second Century Fund
- The Edith Coulter Fund
- Dunard Fund USA
- The Heimbald Family Children's Playing and Learning Center Fund
- The Icelandic Cultural Fund
- The F. Donald Kenney Fund for Visual Arts
- The Elle Leppälä Kronquist from Kuru, Finland, and William Kronquist from Narpes, Finland, and Dr. Laura Kronquist Mesaros Memorial Endowment Fund
- Asbjørn Lunde Fund in Memory of Karl and Elisa Lunde
- The Norwegian Centennial Cultural Fund
- The Nordic Investment Bank Fund
- The Barbro Osher Pro Suecia Foundation Young Artists Performance Endowment Fund
- The Philip W. Pfeifer III Fund
- The Hilppa Roby Fund for Finnish Cultural and Educational Programs at Scandinava House



## AWARDS & PRIZES



—ASF BIRGIT NILSSON PRIZEWINNER JESSICA FASELT—IMAGE BY CHRISTINE BUTLER/ASF

### ASF GOLD MEDAL

The American-Scandinavian Foundation's highest honor, the Gold Medal recognizes the achievement of persons or institutions promoting the ideals set forth in the Foundation's mission. In 2019, the ASF Gold Medal was awarded to Liv Ullmann, the renowned actress, director, writer, and humanitarian. The award recognizes her extraordinary accomplishments in film and theater, as well as her passionate advocacy of women and children worldwide. Ms. Ullmann has served as an Executive Trustee of ASF since 2006.

### AWARD FOR DISTINGUISHED PUBLIC SERVICE

The ASF Award for Distinguished Public Service honors individuals or organizations whose leadership in humanitarian or public service significantly fosters understanding and collaboration between the United States and the Nordic region. In 2018, the Award for Distinguished Public Service was presented to The LEGO Group, the Danish company whose products reflect the Scandinavian approach to learning through play has influenced generations of children worldwide. In 2019, the Award for Distinguished Public Service honored Ambassador Edward E. Elson. Mr. Elson served as U.S. Ambassador to Denmark from 1993-1998, as Executive Trustee of the ASF since 1999, and as ASF's Vice Chair for Denmark 2001-2017.

### ASF NIELS POULSON AWARD

The Niels Poulson Award, named after the ASF's founder, honors the outstanding dedication and service of a Trustee of the Foundation as well as their support of the ASF's mission to encourage educational and cultural exchange between the U.S. and the Nordic region. In 2018, the ASF Niels Poulson Award was presented to Bård Bunæs, a dedicated Trustee since 1997, who has served in numerous capacities with talent and dedication including as Chairman 2006-2009, Treasurer 2012-2019, and Vice Chairman for Norway for many years.

### BIRGIT NILSSON AWARD

The Birgit Nilsson Award was established in 1988, the 350th anniversary of New Sweden, the first Swedish settlement in the U.S. The Award was endowed through proceeds of a concert honoring the world-renowned Swedish soprano Birgit Nilsson. It is awarded to a finalist in the Metropolitan Opera Auditions, one of the most prestigious competitions for young singers in the world.

In 2018, the Birgit Nilsson Award was presented to soprano Jessica Fasel and in 2019, the recipient was mezzo-soprano Elena Villalón.

### ASF TRANSLATION PRIZES

The ASF Translation Prizes are awarded regularly in the U.S. for English translations of Nordic literature. The awards recognize outstanding translation of prose or poetry by Nordic authors born after 1800. Established in 1980, the ASF has recognized, through this annual competition, exemplary work by more than 50 translators. In 2017, Maija Liisa Mäkinen (Brooklyn, New York) was awarded the Nadia Christensen Prize for her translation of an excerpt from *Pelon maantiede* (*Geography of Fear*) by Finnish author Anja Snellman. In 2018, the recipient was Kelsi Vanada (Monument, Colorado) for her translation of poems from *Atlantis* by Swedish poet Marie Silkeberg.

The Leif and Inger Sjöberg Prize recognizes distinguished effort by a translator whose work has not previously been published. In 2017, the award was presented to Melissa Bowers (Seattle, Washington) for her translation from the Swedish of poems from *Vittnen till meningslösa händelser* (*Witness to Meaningless Events*) by Jasmin Mohamed. In 2018, Sherilyn Hellberg (Berkeley, California) was awarded the Prize for her translation of poems from *Nike* by Danish poet Caspar Eric.



—ISSUES OF SCANDINAVIAN REVIEW—IMAGE COURTESY ASF

## PUBLICATIONS SCANDINAVIAN REVIEW

ASF's flagship publication is *Scandinavian Review*, an illustrated journal that presents many aspects of life and culture in the Nordic countries, through articles on contemporary and historical issues as well as on new developments in the region. Published continuously since 1913, *Scandinavian Review* also presents current exhibitions at Scandinavia House, excerpts from the winning entries in ASF's annual Translation Prize competition, and a New Nordic Book Tips section. Three issues were published in each of the last two fiscal years.

### Summer 2017

The cover story in the summer of 2017 was on Gustaf Tenggren, Swedish-born artist whose prolific career in the United States included work for Little Golden Books, Disney, and the design of a host of magazine illustrations and advertisements, as well as other visual art. Other articles looked at wind power in Norway, Finnish writer Mika Waltari, and the architecture of towers in Copenhagen.

### Autumn 2017

The Faroe Islands' steps towards full independence was the cover feature in this issue which also presented *The Experimental Self: Edvard Munch's Photography* exhibition, articles on Finnish traits and characteristics, and a long-standing Ibsen theater festival. Historical articles focused on the ambassador appointed to Sweden by Abraham Lincoln, a Danish/Swedish expedition to the Middle East in the 1700s.

### Spring 2018

This issue included an interview with the President of Iceland and a look at his nation's major move to sovereignty one hundred years ago. It also profiled the story behind LEGO, how Denmark, Norway, and Sweden are responding to climate change, Scandinavia's shared prosperity, and the Swedish city of Norrköping.

### Summer 2018

This issue featured the *Light Lines* exhibition at Scandinavia House and included a profile of artist Jan Groth. Other articles looked at Scandinavian support of women's rights in the developing world, a World War II spy, and the 17th-century Swedish colony in North America. The issue also included a selection of photographs documenting life in Sunnfjord, Norway a century ago.

### Autumn 2018

Norwegian artist and illustrator Theodor Kittelsen was the focus of this issue's cover article, while other features looked at how an Icelandic company uses geothermal power to produce the biofuel ethanol from carbon dioxide, city harbor swimming in Copenhagen, Scandinavian films remade in the U.S. over the last century, and the recent Swedish election.

### Spring 2018

With Liv Ullmann, ASF's most recent recipient of its Gold Medal, as the cover feature, this issue also featured the *Nordic Impressions* exhibition, a look at similarities and differences among the Nordic languages, a selection of portraits and interviews entitled "Sámi Voices," and an article on Scandinavian pirates in the North Atlantic at the time of Blackbeard and Henry Morgan.

## SCAN

The American-Scandinavian Foundation also publishes a quarterly newsletter, *SCAN*, which reports on ASF's activities and programs, along with news from the Nordic region and Scandinavian events throughout the United States.



## ASF SPRING GALA



—EDWARD GALLAGHER, MONIKA HEIMBOLD, H.E. GUÐNI TH. JÓHANNESSON, ELIZA REID—IMAGE BY CHRISTINE BUTLER/ASF

### SPRING GALA 2018

The American-Scandinavian Foundation's Spring Gala took place on Thursday, May 10, 2018, at the Metropolitan Club in New York. The focus of the 2018 event was a tribute to the Centenary of Icelandic independence and sovereignty, and we were delighted to have His Excellency Guðni Th. Jóhannesson (elected 6th President of Iceland in 2016) and First Lady Eliza Reid attend as special Guests of Honor.



—DR. KRISTJÁN RAGNARSSON AND HRAFNHILDUR RAGNARSSON—IMAGE BY CHRISTINE BUTLER/ASF

ASF Trustee and Vice Chairman for Iceland, Kristján Ragnarsson kicked off the evening with opening remarks. Helgi Tomasson, Advisory Trustee of ASF since 1979 and Artistic Director and Principal Choreographer at San Francisco Ballet, then introduced Mr. Jóhannesson, whose address combined history, personal recollections of growing up in Iceland, and lots of humor, setting the tone for a very festive and upbeat evening.



—STEVE WELLER, KRISTINA KITTILSEN, H.E. GUÐNI TH. JÓHANNESSON, ELIZA REID—IMAGE BY CHRISTINE BUTLER/ASF

The Honorable Charles & Mrs. Monika Heimbold, Kristina Kittilsen & Steve Weller, and Hrafnhildur & Kristján T. Ragnarsson served as the Gala Chairs. Vice Chairs were Carl Gustaf Ehrnrooth, Inger G. and William B. Ginsberg, and Siggí Hilmarsson. The Icelandic firm Össur hf., represented by President & CEO, Jón Sigurðsson, served as the Corporate Chair.



—SKIP KODAK ACCEPTS AWARD WITH MONIKA HEIMBOLD AND STEVEN PERI—IMAGE BY CHRISTINE BUTLER/ASF

Highlights of the evening included the presentation of the ASF Distinguished Public Service Award to The LEGO Group, the Danish company whose products and Scandinavian approach to learning through play has influenced generations of children all over the world. Accepting the award for The LEGO Group was Skip Kodak, Executive Vice President of the Americas.



—BÅRD BUNAES ACCEPTS AWARD WITH BENTE SVENSEN FRANTZ AND STEVEN PERI—IMAGE BY CHRISTINE BUTLER/ASF

The ASF Niels Poulson Award was presented to Bård Bunaes, a dedicated Trustee since 1997, who has served in a number of capacities over the last twenty years, including as Board Chair from 2006-2009, Treasurer since 2012 and Vice-Chair for Norway for many years.



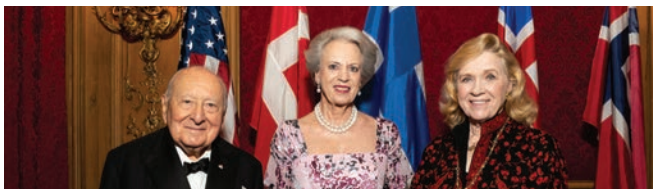
—GALA GUESTS DANCE IN THE BALLROOM—IMAGE BY CHRISTINE BUTLER/ASF



—EDWARD E. ELSON, H.R.H. PRINCESS BENEDIKTE OF DENMARK, STEVEN B. PERI, LIV ULLMAN, AND EDWARD GALLAGHER—IMAGE BY CHRISTINE BUTLER/ASF

## SPRING GALA 2019

The 2019 Spring Gala was held on Thursday, May 30, 2019, in the presence of Her Royal Highness Princess Benedikte of Denmark, at the Metropolitan Club in New York City. Her Royal Highness, who is ASF's Honorary Trustee from Denmark, was the recipient of ASF's Award for Distinguished Public Service in 2010.



—EDWARD E. ELSON, H.R.H. PRINCESS BENEDIKTE OF DENMARK, LIV ULLMAN—IMAGE BY CHRISTINE BUTLER/ASF

The Honorable Charles and Mrs. Monika Heibold and Kristina Kittilsen & Steve Weller served as Gala Chairs. Vice Chairs were Mrs. Edward E. Elson, Inger G. and William B. Ginsberg, Ragnar and Laureen Meyer-Knutsen and Donald Saunders.



—KRISTINA KITTILSEN, MONIKA HEIBOLD, EDWARD GALLAGHER, H.R.H. PRINCESS BENEDIKTE, STEVEN PERI AND LIV ULLMAN—IMAGE BY CHRISTINE BUTLER/ASF

This year's event honored two long-serving ASF Trustees. Iconic actress, director, writer and humanitarian, Liv Ullmann, received the Gold Medal, the highest award bestowed by ASF, presented by Rupert Friend and Aimee Mullins. Distinguished businessman, former ambassador and philanthropist, Edward E. Elson, received the ASF Award for Distinguished Public Service. Ambassador Elson was presented his award by H.R.H. Princess Benedikte.



—LIV ULLMANN ACCEPTS ASF GOLD MEDAL FROM AIMEE MULLINS AND RUPERT FRIEND—IMAGE BY CHRISTINE BUTLER/ASF



—H.R.H. PRINCESS BENEDIKTE OF DENMARK PRESENTS ASF AWARD TO EDWARD E. ELSON—IMAGE BY CHRISTINE BUTLER/ASF

Other highlights included a performance by soprano Jessica Faselt, the 2018 ASF Birgit Nilsson Award-winner, a cocktail reception and dancing, and music by Peter Duchin Orchestra. All proceeds from the Gala benefit ASF's initiatives to promote cultural and education exchange between the U.S. and Nordic countries.



—JESSICA FASELT PERFORMS AT GALA—IMAGE BY CHRISTINE BUTLER/ASF



—GUESTS DANCE IN THE BALLROOM—IMAGE BY CHRISTINE BUTLER/ASF



## ASF ANNUAL DONOR SUPPORT

The American-Scandinavian Foundation is grateful to the many individuals, corporations, and foundations that have generously contributed financial and in-kind support to the Foundation. These gifts ensure that the ASF will continue to promote international understanding through education and cultural exchange between the United States and the five Nordic nations.

### 2017 - 2018

*This list of donors reflects gifts and pledges made to the Foundation during the fiscal year ending June 30, 2018.*

#### PRESIDENT'S CIRCLE

##### \$100,000 and Above

Margaret A. Cargill  
Philanthropies

Estate of Mrs. Birgitta  
Tyra Dill

Birgit Faber Morse

Estate of Philip W. Pfeifer

Arthur Zeckendorf

##### \$50,000 and Above

Norway House  
Foundation

The Barbro Osher Pro  
Suecia Foundation

Scandinavian Seminar

#### LEADERS

##### \$25,000 and Above

DNB Bank ASA

Carl Gustaf Ehrnrooth

Inger G. and William B.  
Ginsberg

Hon. Charles A. and Mrs.  
Monika Heimbold / The  
Heimbold Foundation

Siggi Hilmarsson

Kristina Kittilsen and  
Steve Weller

The LEGO Group

Ragnar and Laureen  
Meyer-Knutsen

Ossur hf.

Starr Foundation

The G. Unger Vetlesen  
Foundation

#### PATRONS

##### \$15,000 and Above

The Bergesen Foundation

The Bård and Barbara  
Bunaes Family Fund

Danske Markets Inc.

The Leif Høegh  
Foundation

Iceland Naturally

Trond S. Jensen

Sean Kenney Design, Inc.

Nordea Bank AB

#### SPONSORS

##### \$10,000 and Above

Alcoa Foundation

Equinor US Holdings, Inc.

Lena Biðrck Kaplan

Hon. and Mrs. John L.  
Loeb, Jr.

Stuart Family Foundation

WLHI/ARC

Amb. Michael Wood and  
Judy Wood

#### BENEFACTORS

##### \$5,000 and Above

Gudrun Aspelund and  
Gunnar Jakobsson

Atlantika, Inc.

Charles K. Barbo

Ingrid I. Bernhard

Brown Advisory

Cathleen M. Cameron

The Raymond E. & Ellen F.  
Crane Foundation

Daphne L. Davidson and  
Thomas Schwartz

Anders Ekernäs

Margaret Fechtmann

Bente Svensen Frantz

Fritt Ord Foundation

Goldman Sachs & Co.

Jens P. Heyerdahl, d.y.

Holland & Knight LLP

Íslandsbanki

Munch Museum

Sigurdur O. Olafsson

Hon. and Mrs. Lyndon L.  
Olson, Jr.

Peri & Stewart LLC

Steven B. Peri

The National Museum  
of Art, Architecture and  
Design, Norway

Dr. and Mrs. Kristján T.  
Ragnarsson

Sheila Johnson Robbins  
Roby Family Foundation  
/ Hilppa and Joe Roby

Royal Norwegian  
Consulate General

Agnes Ahlander Turner  
and Jedediah H.K. Turner

Thórunn Wathne

#### CONTRIBUTORS

##### \$1,000 and Above

Emma Aer

AIG

Mary Lou and Ira Alpert

American Scandinavian  
Society of New York

Charles B. Anderson

Karl and Louise Andrés

D. Euan and Merete  
Angelica Baird

Craig and Barbara  
Barrett Foundation

The Hon. Stuart A.  
Bernstein

Birna Anna Bjornsdottir  
and Peter Niculescu

Victor B. and Paula Borge

Anders and Amy Brag

Laufey and Ted Bustany

Edward O. Carney

Lynn Carter

Dr. Kensha M. Clark

The Cobb Family  
Foundation

Mr. and Mrs. Alpo  
Fransilla Crane

Janet and James Crowle

David E. R. Dangoor

Marilyn O. Dimling

Craig Dykers

Michelle V. Edelman

Aili Flint

Peter S. Gabrail

Edward P. Gallagher

Greater Kansas City  
Foundation - Victor A.  
Regnier Fund

Hon. Charles S. Haight,  
Jr.

**CONTRIBUTORS (CONT.)**

The Per and Astrid  
Heidenreich Family  
Foundation

The Hognander  
Foundation

Bengt Holmström

Janis J. Johnson

Ziggy Jonsson and Elin  
Petursdottir

Christopher G. Kelly

The Charles & Lucille  
King Family Foundation

Eugene and Barbara  
Kokot

Kaarina Koskenalusta

Terje Lande and Mary  
Zamore

Christina Lang-Assael

Øivind Lorentzen, Jr.

Ruth Lynford

Michael and Cecilia  
Mathews

Mrs. Inger McCabe Elliott

Dtr. Rose-Marie G. Oster

Linda and Gerald  
Nordberg

Yvonne S. Pollack

Starr and Lennard  
Rambusch

Brent Porter and Mary  
Salstrom

Diane R. Schneider

Marcus Siezing

Gunnar H. Sigurgeirsson  
and Rita Sunny-Yang

Mr. and Mrs. James M.  
Stewart

Bente L. Strong

SWEA/New Jersey

Inger M. Tallaksen

Virginia L. and Thor  
Thors, Jr.

Vilhjalmur Thorsteinsson

Helgi and Marlene  
Tómasson

Toy Association

Liv Ullmann

University of Oslo

Michelle Vrebalovich

James D. Ward

Joan Waring

**SUPPORTERS****\$500 and Above**

Patricia Berman

The Capital Group  
Companies Charitable  
Foundation

Leslie Cecil

Anna Chapman

Edward DeLuca

Yvonne Ericson Dryden

Susana H. Finkel

Virginia L. Gold

Cami Green-Hofstadter

Magnus Gustafsson

Mr. and Mrs. Jaakko J.  
Haikala

Flemming and Judy  
Heilmann

Adam Hochstead and  
Inka Juslin

John Hofteig

Anders Iversen

Ted H. Jacobsen

Robert Knorr

Leena K. Langeland, DMD

Allison and Dan London

Victoria Morris

Patricia Ohnell

Gloria Schoolfield

Henrik M. Steffensen

Michael Steinfeld

Thea W. Sundt

Joan Templeton

Thorstenn & Thorstenn

**IN KIND GIFTS**

Chicago Importing  
Company

Fiskars, Inc.

Flying Tiger Copenhagen

Magisso North America,  
Inc.

Mikkeller

Nøgne Ø

Norseland, Inc.

SAS, Scandinavian  
Airlines

siggis

Svenska Kulturfonden/  
The Swedish Cultural  
Foundation in Finland

To Øl

**CORPORATE MEMBERS**

Corporate Members provide the critical support that ASF needs to continue our rich legacy of providing stimulating and diverse programming for all ages. We are extremely grateful and wish to thank the following corporations for their generous and ongoing support:

**Corporate Patron**

DNB Bank ASA

**Corporate Sustainer**

Danske Markets Inc.

Nordea Bank AB

Equinor

**Corporate Friend**

DSV Air & Sea

(2018-19 Donors continue on the following page.)

## 2018 - 2019

*This list of donors reflects gifts and pledges made to the Foundation during the fiscal year ending June 30, 2019.*

### PRESIDENT'S CIRCLE

#### \$100,000 and Above

Jane and Aatos Erkkö Foundation

Birgit Faber Morse

Norway House Foundation

Estate of Margaret Sorensen Burke

#### \$50,000 and Above

Hon. Charles P. and Mrs. Monika A. Heimböld

/The Heimböld Foundation

The Barbro Osher Pro Suecia Foundation

Scandinavian Seminar

Lise Stolt-Nielsen/The Nadia and Jacob Stolt-Nielsen Benevolent Fund

Liv Ullmann and Donald Saunders

### LEADERS

#### \$25,000 and Above

The Bergesen Foundation

Margaret A. Cargill Philanthropies

DNB Bank ASA, New York Branch

Hon. Edward E. Elson and Mrs. Susie Elson

Inger G. and William B. Ginsberg

Kristina Kittilsen and Steve Weller

The Leonard and Judy Lauder Foundation

Ragnar and Laureen Meyer-Knutsen

The Starr Foundation

The G. Unger Vetlesen Foundation

Starr Foundation

The G. Unger Vetlesen Foundation

### PATRONS

#### \$15,000 and Above

Trond Sigurd Jensen

Nordea Bank Abp, New York Branch

### SPONSORS

#### \$10,000 and Above

AIG Group

Danske Markets, Inc.

Daphne L. Davidson and Thomas R. Schwartz

Equinor US Holdings, Inc.

John L. Loeb Jr.

Hon. Lyndon L. Olson, Jr.

Nina Skage and Per Gunnar Strømberg Rasmussen

Stuart Family Foundation

Wallenius Lines Holdings

Michael M. Wood

### BENEFACTORS

#### \$5,000 and Above

Charles K. Barbo

Sigríður Benediktsdóttir

Ingrid I. Bernhard

Anders C. Brag

Cathleen M. Cameron

The Raymond E. & Ellen F. Crane Foundation

Carol E. and David A. Domina

Sven Anders Ekernäs

Equinor Pipelines, LLC

Bente Svensen Frantz

Bruce N. Hadley Jr. and

Inger Hadley

Jens P. Heyerdahl d.y.

Sheila Johnson Robbins

Lena Biörck Kaplan

Holland & Knight

Christopher D. Kann

Erna M. Kojic

Terje Z. Lande and Mary Zamore

NASDAQ

Linda and Gerald

Nordberg

Steven B. Peri

Roby Family Foundation/Hilppa and Joe Roby

Royal Norwegian Consulate General in

New York

Fritz H. Schur

Agnes Ahlander Turner and Jedediah H.K. Turner

### CONTRIBUTORS

#### \$1,000 and Above

Charles B. Anderson

Karl and Louise André

Gudrun Aspelund and Gunnar Jakobsson

Hon. Barbara Barrett

Björg Bergsveinsdóttir and Eggert Dagbjartsson

Hon. Stuart A. Bernstein

Victor B. and Paula Borge

Geoffrey N Bradfield

Brown Advisory

The Bård and Barbara Bunaes Family Fund

Laufey Bustany

Edward O. Carney

Lynn Carter

The Charles & Lucille King Family Foundation

The Cobb Family Foundation

Norman Cohn

George Cohon

The Consulate General of Sweden in New York

Mr. and Mrs. Alpo Franssila Crane

Janet and James Crowle

David E. R. Dangoor

Diamonstein/Spielvogel Foundation

Yvonne Ericson Dryden

Inger M. Elliott

Erkko Etula

J. Pepe M. Fanjul

Michael A. Feirstein

Aili Flint

Suzanne Frederick

Edward P. Gallagher

Henry P. Godfrey

Goldman Sachs & Co.

Magnús Gústafsson

Hon. Charles S. Haight Jr.

The Hognander Foundation

Bengt R. Holmström

Julie Houston

Iceland Naturally

Niels Jacobsen

Janis J. Johnson

The Karev Foundation

Christopher G. Kelly

Eugene and Barbara Kokot

Donald Kramer

Jette Jacobsen Lord

Øivind Lorentzen Jr.

Michael and Cecelia Mathews

Sigrid B. McWilliams  
 Dr. Rose-Marie G. Oster  
 Peri & Stewart LLC  
 Dr. and Mrs. Kristján T. Ragnarsson  
 Starr and Lennard Rambusch  
 Henrik Roos  
 Royal Danish Consulate General, New York  
 Marcus Siezing  
 Gunnar H Sigurgeirsson  
 Mr. and Mrs. James M. Stewart  
 Lise Stolt-Nielsen  
 Inger M. Tallaksen  
 Virginia L. and Thor Thors Jr.  
 Barbara and Donald Tober Foundation  
 Helgi and Marlene Tómasson  
 Rutger von Post  
 Thórunn Wathne  
 Inger K. Witter

## **SUPPORTERS**

### **\$500 and Above**

Helle Skog Allen  
 Larry Beyer  
 Sid Bresler  
 Paul Bushkovitch  
 Roberto Camacho  
 Giosetta Capriati  
 Anna Chapman  
 Inger P. Davis  
 Edward DeLuca  
 Doreen Grace Downs  
 Peter Eio  
 Robert Goodfellow  
 Greater Kansas City

Foundation -Victor A. Regnier Fund  
 Cami Green-Hofstadter  
 Jaako J. Haikala  
 C. Flemming Heilmann  
 David Hendrickson  
 Anders Iversen  
 Erika Kitano  
 Barbara D. Knox  
 Kaarina Koskenalusta  
 Leena Kaarina Langeland  
 Lars Liebst  
 Pia Lindstrom  
 Mary Ellen Oldenburg  
 Suella Pipal  
 Henrik M. Steffensen  
 Michael Steinfeld  
 SWEA/New Jersey  
 Joan M. Waring

## **IN KIND GIFTS**

Brooklyn Brewery  
 Chicago Importing Company  
 Fazer Inc. USA  
 Norseland Incorporated USA  
 SAS, Scandinavian Airlines

## **CORPORATE MEMBERS**

### **Corporate Patron**

DNB Bank ASA, New York Branch

### **Corporate Sustainer**

Danske Markets, Inc.  
 Equinor US Holdings, Inc.  
 Nordea Abp, New York Branch

### **Corporate Friend**

DSV Air & Sea



## MEMBERSHIP



—SCANDINAVIA HOUSE GALLERIES—IMAGE BY CHRISTINE BUTLER/ASF

ASF's Membership program offers individuals with opportunities to discover the rich legacy of Scandinavian arts, culture, and thought, while providing vital financial support. The Foundation currently has over 4,000 members and supporters throughout the U.S. and around the world.

There are many great benefits offered to ASF members at all levels. Members receive yearly subscriptions to ASF's lively and informative journal, *Scandinavian Review*, as well as the membership newsletter, *SCAN*, and are invited to participate in special events and program opportunities throughout the year. Visitors in the greater New York area encouraged to visit Scandinavia House, where members at the Individual level and above receive free or reduced admission to films, lectures, concerts, and children's programs; discounts in the Shop and Smörgås Chef restaurant; and invitations to special member events such as exhibition previews, gallery tours, and the annual Holiday Party. Children's Center members have access to the Heimbold Family Children's Playing & Learning Center. Additionally, our new Young Patron membership program provides a calendar of special social events and cultural opportunities at Scandinavia House and throughout New York City.

ASF is grateful to its many members whose support helps make possible the Foundation's many educational and cultural programs. It offers special thanks to those members listed below whose category of membership (during the period covered by this report) was at the Sustainer level or above.

---

### BENEFACTOR

Nelson Blitz  
 Mrs. Birgitta Tyra Dill  
 Bruce N. Hadley, Jr. and Inger E. Hadley  
 Terje Lande and Mary Zamore  
 Daniel and Ellen Strickler

George and Kerstin Trowbridge  
 Mr. and Mrs. Jedediah H. K. Turner

### PATRON

Gudrun Aspelund  
 Lars and Diana Bergquist  
 Thomas C. Brokaw  
 Lynne Cherry  
 Camille J. Douglas  
 Henry P. Godfrey and Ginger Schnaper  
 Christopher D. Kann  
 Christopher G. Kelly  
 Kristina Kittilsen  
 Cassandra Klimp  
 Lance and Marjorie Lindblom  
 Asbjørn Lunde  
 Maria-Liisa Lydon  
 Lance Nelson  
 Diane R. Schneider  
 Marcus Siezing  
 Inger K. Witter

### SUSTAINER

Scandinavian Seminar  
 Benjamin Bankson  
 Karin J. Barkhorn, Esq.  
 Mark Beatt  
 Graeme Birchall  
 Michelle Depew  
 Bonnie Haydon  
 Fredrick L. Johnson  
 Alice La Prella  
 Ingegerd Mundheim  
 Maury Newburger  
 Carrin M. Patman  
 B. M. Pedersen  
 Bente L. Strong  
 Matthew Dean Todd

## STAFF



### —ASF STAFF HOLIDAY DINNER 2017

Full time and office staff of the American-Scandinavian Foundation as of June 30, 2019

**Edward P. Gallagher**

President and Chief Executive Officer

**Lynn Carter**

Senior Advisor and Secretary to the Board

**Madeleine Chatz**

Executive Assistant to the President

**Jeff Clayborn**

Director of Security and Fire Safety

**Yvonne Ericson**

Visitor Services Coordinator

**Laura Feld**

Cultural Programs Assistant

**Lori Fredrickson**

Head of Communications, Marketing, & Digital

**Carl Fritscher**

Fellowships and Grants Officer

**David Gonzalez**

Building Superintendent

**Nancy Lee**

Office Manager

**Victoria McGann**

Scandinavia House Manager

**Stephen McGrath**

Director of Finance and Administration

**Hertta Nilsson**

Children's Center Supervisor

**Chelsea Nuesi**

Communications and Marketing Assistant

**Marie-José O'Keefe**

Special Event Coordinator

**Tatiana Pashman**

Director of Internships & Training

**Kyle Reinhart**

Manager of Cultural and Educational Programs

**Elizabeth Scheel**

Manager of Development and External Affairs

**Emily Stoddart**

Manager of Exhibitions and Community Programs

**Janice Thaler**

Bookkeeper

**Erin Wheeler**

Membership Manager

**Laura Winterhalter**

Manager of the Shop at Scandinavia House

## FINANCIAL STATEMENTS



—SCANDINAVIA HOUSE—IMAGE BY LINDA HAGLUND/ASF

### THE AMERICAN-SCANDINAVIAN FOUNDATION STATEMENT OF FINANCIAL POSITION 6-30-2018 & 6-30-2019

<b>Assets</b>	<b>2018</b>	<b>2019</b>
Cash & Cash Equivalents	661,506	630,713
Investments	34,010,735	34,205,823
Accounts Receivable	167,598	242,720
Receivables from King Street Capital L.P.	-	937,881
Inventory	165,897	176,257
Prepaid Expenses	85,656	138,920
Property & Equipment	14,668,623	14,249,664
<b>Total Assets</b>	<b>49,760,015</b>	<b>50,581,978</b>
<hr/>		
<b>Liabilities &amp; Net Assets</b>		
<b>Liabilities:</b>		
Accounts payable & accrued expenses	259,375	249,271
Deferred revenues	51,868	40,146
Grants payable	763,977	742,502
<b>Total Liabilities</b>	<b>1,075,220</b>	<b>1,031,919</b>
<b>Net Assets without Donor Restrictions:</b>		
Operating	971,271	1,156,844
Board designated	5,919,856	5,738,832
Plant fund	14,668,623	14,249,664
<b>Total Unrestricted</b>	<b>21,559,750</b>	<b>21,145,340</b>
<b>Net Assets with Donor Restrictions:</b>	<b>27,125,045</b>	<b>28,404,719</b>
<b>Total Net Assets</b>	<b>48,684,795</b>	<b>49,550,059</b>
<b>Total Liabilities &amp; Net Assets</b>	<b>49,760,015</b>	<b>50,581,978</b>

The complete financial statements for the periods ended June 30, 2016 and June 30, 2017, as audited by Loeb & Troper, are available from the ASF.

**THE AMERICAN-SCANDINAVIAN FOUNDATION**  
**STATEMENT OF ACTIVITIES**  
**YEAR ENDED JUNE 30, 2019**

	Unrestricted	With Donor Restrictions	Total 2019
<b>Revenues:</b>			
Contributions	609,201	947,171	1,556,372
Special events	308,775		
<i>Less direct cost of special events</i>	<i>(76,946)</i>		231,829
Membership dues	234,519		234,519
Investment return designated for			
Current operations	397,817	1,017,911	1,415,728
Exchange program fees	107,910		107,910
Advertising and publishing	10,455		10,455
Auxiliary service fees	817,930		817,930
Gift shop	496,642		
<i>Less cost of goods sold</i>	<i>(261,652)</i>		234,990
Program fees	90,409		90,409
Net assets released from restrictions	1,728,718		1,728,718
<b>Total revenues, gains, &amp; other support</b>	<b>4,463,778</b>		<b>4,463,778</b>
<b>Operating Expenses:</b>			
Program services			
Training and fellowship programs	1,337,288		1,337,288
Membership	122,665		122,665
Public Programs	2,072,967		2,072,967
Publications	104,293		104,293
<b>Total programs services</b>	<b>3,637,213</b>		<b>3,637,213</b>
<b>Supporting Services</b>			
Management and general	609,121		609,121
Fundraising	216,489		216,489
<b>Total supporting services</b>	<b>825,610</b>		<b>825,610</b>
<b>Total operating expenses</b>	<b>4,462,823</b>		<b>4,462,823</b>
<b>Operating income</b>	955	236,364	237,319
<b>Other income (expense):</b>			
Net Investment return (loss) in excess of amounts designated for current operations	3,451	8,830	12,281
Contributions for long-term investment		1,176,003	1,176,003
Depreciation expense	(560,339)		(560,339)
Net assets released for property & equipment acquisition	141,523		(141,523)
<b>Total other income (expense)</b>	<b>(415,365)</b>	<b>1,043,310</b>	<b>627,945</b>
<b>Change in net assets</b>	<b>(414,410)</b>	<b>1,279,674</b>	<b>865,264</b>
<b>Net assets - beginning of year</b>	<b>21,559,750</b>	<b>27,125,045</b>	<b>48,684,795</b>
<b>Net assets - end of year</b>	<b>\$ 21,145,340</b>	<b>\$ 28,404,719</b>	<b>\$ 49,550,059</b>





—SMÖRGÅS CHEF

## FACILITIES & SERVICES

### SMÖRGÅS CHEF

Smörgås Chef has managed the restaurant at Scandinavia House since September 2008 as one of its main New York City locations. Serving fine Scandinavian cuisine, Smörgås Chef offers lunch, dinner, and weekend brunch, along with special promotions related to ASF films and concerts. With an authentic custom-designed birch tree installation at its center and café tables and colorful chairs designed



—VOLVO HALL

by Arne Jacobsen, Smörgås Chef provides diners with a vivid introduction to Nordic fare.

### EVENT VENUE

While serving as a lively cultural center for Nordic programs presented by The American-Scandinavian Foundation, Scandinavia House is also a popular venue for events hosted by other nonprofits, government offices, corporations, and individuals. These include meetings, conferences, seminars, receptions, luncheons, dinners, film screenings, concerts, and weddings. The revenue generated by rentals provides important support for the operations of Scandinavia House and the ASF.

### THE SHOP @ SCANDINAVIA HOUSE

The Shop @ Scandinavia House, one of New York's best sources of imported Nordic goods, introduces visitors to Scandinavian design and style. Showcasing modern designers from Scandinavia as well as established legends, The Shop offers distinctive home design and tableware, art glass, textiles, luxurious sweaters and



—THE SHOP @ SCANDINAVIA HOUSE

accessories, unique jewelry, handmade clogs, and children's items, along with favorite Scandinavian foods and confections.

## COOPERATING GROUPS



—SUNSET, STOCKHOLM, SWEDEN—IMAGE BY SUSANNE WALSTROM/COURTESY OF IMAGE BANK SWEDEN

### COOPERATING INSTITUTIONS & OFFICES

ASF's cooperating offices in each of the Nordic countries provide invaluable assistance to and collaboration with ASF in a number of areas of educational exchange, primarily the Fellowships & Grants program. The Foundation acknowledges with gratitude its long-standing affiliation with these organizations.

#### **The League of Finnish-American Societies**

Suomi-Amerikka Yhdistysten Liitto  
Eteläranta 6 A 8, 3. krs 00130 Helsinki, Finland  
[samsuomi.fi/apurahat](http://samsuomi.fi/apurahat)

#### **The Icelandic-American Society**

Íslensk-ameríska félagið  
PO Box 320, IS-121 Reykjavík, Iceland  
[www.iceam.is](http://www.iceam.is)

#### **The Norway-America Association**

Norge-Amerika Foreningen  
Rådhusgatan 23B, N-0158 Oslo 2, Norway  
[www.noram.no](http://www.noram.no)

#### **Fulbright Sweden**

Vasagatan 15-17, 4th Floor  
11 20 Stockholm, Sweden  
[www.fulbright.se](http://www.fulbright.se)

### ASSOCIATE GROUPS

ASF is affiliated with 11 independent regional groups across the U.S. These groups sponsor programs and activities for their local constituents, many of whom are also members of ASF: The American Scandinavian Society of New York - New York, NY • The American-Scandinavian Association of the National Capitol Area - Bethesda, MD • Scandinavian-American Foundation of Georgia - Alpharetta, GA • Scandinavian Club of Columbus - Columbus, OH • American-Scandinavian Association of Illinois, Chicago, IL • Northwest Iowa Associates of The American-Scandinavian Foundation - Storm Lake, IA • Central Iowa Associates of The American-Scandinavian Foundation - West Des Moines, IA • Twin Cities Associates of The American-Scandinavian Foundation - Northfield, MN • American-Scandinavian Association at Augustana College - Rock Island, IL • The Scandinavian-American Cultural and Historical Foundation - Thousand Oaks, CA • The American-Scandinavian Foundation of Santa Barbara - Santa Barbara CA





THE AMERICAN-SCANDINAVIAN FOUNDATION EXTENDS  
ITS GRATITUDE TO THE FOLLOWING DONORS WHO HAVE  
MADE POSSIBLE THE BUILDING OF SCANDINAVIA HOUSE

F. EDWARD KENNEY FOUNDATION

SARBA AND VICTOR BORG  
THEO CONNORSEN GUNBERG AND WILLIAM S. CONNORSEN  
S. F. WOLLEK AND CHRISTINE M. KENNEY WOLLEK FOUNDATION  
YOUNG  
WILLIAM LIND

WOMEN'S BARCELONNE DESIGN AND ARCHITECTURE CENTER'S DONOR  
LEO WOLLEK FOUNDATION

 AMERICAN-  
SCANDINAVIAN  
FOUNDATION

 SCANDINAVIA  
HOUSE