



BI-ANNUAL REPORT— 2019-2021



AMERICAN-SCANDINAVIAN FOUNDATION BIENNIAL REPORT—

7-1-2019 TO 6-30-2021

The American-Scandinavian Foundation (ASF) serves as a vital educational and cultural link between the United States and the five Nordic countries: Denmark, Finland, Iceland, Norway, and Sweden. A publicly supported nonprofit organization, the Foundation fosters cultural understanding, provides a forum for the exchange of ideas, and sustains an extensive program of fellowships, grants, internships/training, publishing, and cultural events. Over 30,000 Scandinavians and Americans have participated in its exchange programs over the last century.

In October 2000, ASF inaugurated its headquarters, Scandinavia House: The Nordic Center in America, where it presents a broad range of public programs furthering its mission to reinforce the strong relationships between the United States and the Nordic nations, honoring their shared values and appreciating their differences.

PATRONS—2019-21

H.M. Queen Margrethe II of Denmark
H.E. Sauli Niinistö, President of Finland
H.E. Guðni Th. Jóhannesson, President of Iceland
H.M. King Harald V of Norway
H.M. King Carl XVI Gustaf of Sweden

HONORARY TRUSTEES—2019-21

H.R.H. Princess Benedikte of Denmark
H.E. Martti Ahtisaari, President of Finland, 1994-2000
H.E. Vigdís Finnbogadóttir, President of Iceland, 1980-1996
H.H. Princess Märtha Louise of Norway
H.R.H. Crown Princess Victoria of Sweden

OFFICERS—2019-21

Dr. Daphne Davidson, Co-Chair
Eugene V. Kokot, Co-Chair
Edward P. Gallagher, President
Henrik Steffensen, Deputy Chair
Anders Iversen, Vice Chair for Denmark
Dr. Aili Flint, Vice Chair for Finland
Dr. Sigríður Benediktsdóttir, Vice Chair for Iceland
Bente Svensen Frantz, Vice Chair for Norway
Monika Heibold, Vice Chair for Sweden
Steven B. Peri, Vice Chair for the United States
Dr. Terje Lande, Treasurer
Lynn Carter, Senior Advisor & Secretary to the Board

A NOTE FROM THE PRESIDENT— EDWARD P. GALLAGHER

I am pleased to present this report which provides an overview of the programs, activities and finances of the American-Scandinavian Foundation during Fiscal Years 2020 and 2021 (July 1, 2019 to June 30, 2021), a period of unusual and unprecedented challenge and achievement for ASF.

The first eight months of the period were busy and productive, as we continued to dynamically pursue the mission set forth by the founders over a century ago — to nurture international understanding through educational and cultural exchange. The year 2020 was particularly noteworthy as we commenced the celebration of the 20th anniversary of the opening of Scandinavia House.

However, in March 2020, as the COVID-19 pandemic took serious hold in New York City and around the United States, our customary mode of operations changed radically. Seemingly all at once, international travel was halted, a move which greatly impacted our Fellowship and Training programs. Moreover, it became necessary to temporarily close Scandinavia House on March 15 as New York City initiated a precautionary lockdown, a measure which would continue for months. Hence, it was necessary to cancel all in-person programs at Scandinavia House and ASF staff began working remotely.

Despite these obstacles, ASF was quick to respond and adjust our operations. Within weeks of the closing of Scandinavia House, we began to present programs virtually, creating “Scandinavia House Online.” In a very short time a rich variety of programs were produced, thanks to the hard work, dedication and creative efforts of ASF staff. Virtual presentations included panels and conversations with experts, scholars, authors and artists; film screenings and film festivals; exhibitions and gallery tours; workshops and classes for children; and more. In most cases, these programs became available on the Scandinavia House website, our Facebook page and our YouTube channel shortly after their premieres. Consequently, the national and international audiences for ASF/Scandinavia House programs have grown enormously.

Throughout the pandemic, our Fellowship and Grant Program remained active, continuing to accept applications and award grants to outstanding candidates, even though recipients postponed their travel and work. During this period, more than \$2 million was awarded in fellowships, grants and public project support, and ASF staff counseled and assisted fellows as their plans needed to be modified.

Unfortunately, the ASF Internship and Training Program, which flourished in the early months of FY 2020, was forced to suspend activity as the U.S. government temporarily eliminated the J Visa program and instituted travel bans.

Scandinavian Review, continuously published since 1913, continued to appear throughout this period, informing and entertaining a broad readership throughout the U.S. and abroad.

With the introduction of the COVID-19 vaccine and the diminishing strength of the pandemic in the spring of 2021, all of us at ASF began to look forward to a return to more normal operations and a reopening of Scandinavia House. We salute the ASF staff who have worked with such dedication and industry to respond to the challenges created by the pandemic. We also warmly thank the ASF Trustees, members and friends whose engagement and support was so crucial to the continued vitality of our organization during this time. And most importantly, we join in mourning the victims who lost their lives to COVID.

Thank you to all!



ASF BOARD OF TRUSTEES

AS OF 6-30-2021

EXECUTIVE TRUSTEES

Emma Aer

CEO and President,
Franklin Foods

Charles B. Anderson

Senior Vice President
(ret.), SKULD North
America, Inc.

Charles K. Barbo

Partner, Catalyst
Storage Partners LLC

Dr. Sigríður

Benediktsdóttir

Senior Researcher
and Director of
Undergraduate Studies
at Jackson Institute
for Global Affairs, Yale
University

Björg Bergsveinsdóttir

Business Owner; operator
and accountant

Victor B. Borge

Film Director

Anders Brag

President, GARB
Holdings LLC

Bård E. Bunaes

President and CEO
(ret.), GLOBAL
Reinsurance Company
of America; Board Chair,
American-Scandinavian
Foundation, 2006–2009

David E.R. Dangoor

Principal & President,
Innoventive Partners,
LLC; Vice Chairman,
BioGaia AB

Dr. Daphne Davidson

Chair, Scandinavian
Seminar; Attorney
(private practice);
Board Co-Chair,
American-Scandinavian
Foundation,
2019–present

Morten Degenmark

President, I.B.N. Diamond
Corp.

Maria Ederer

Executive Director,
Middle Market Financial
Sponsor Group, J.P.
Morgan

Sven Anders Ekernäs

Chairman & CEO
(ret.), Hillswick Asset
Management

Inger McCabe Elliott

President, IME/LTD

Hon. Edward E. Elson

U.S. Ambassador to
Denmark, 1993–1998

Erkko Etula

Co-Founder & CIO,
SkopeAI; former Goldman
Sachs Managing Director

Michael A. Feirstein

Former Vice President
and Corporate Counsel,
Prudential Financial, Inc.

Dr. Aili Flint

Head of the Finnish
Program (ret.), Columbia
University

Bente Svensen Frantz

Board Chair, American-
Scandinavian
Foundation, 2012–2015;
Deputy Board Chair,
2009–2012 & 2015–2018.

Edward P. Gallagher

President, American-
Scandinavian
Foundation, 1996–
present

Inger Gundersen Ginsberg

Magnús Gústafsson

Chairman of the Board,
HBGrandi

Monika Heimbold, MSW

President, Heimbold
Foundation

Siggi Hilmarsson

Founder and CEO, siggi's
dairy

Anders Iversen

Managing Director,
Danske Markets

Trond S. Jensen

President, Sigurd Jensen
& Co.; CEO, Chestnut Hill
Farms; Honorary Consul
General for Norway,
Florida

Christopher Kann

The Corcoran Real
Estate Group

Lena Biörck Kaplan

President, American-
Scandinavian Foundation
1989–1996

Christopher G. Kelly

Partner, Holland & Knight

Lizanne Kindler

CEO, Talbots

Kristina Kittilsen

Former Director, US
Institutional Equity
Sales, Credit Suisse
Securities LLC

Erna Milunka Kojic, M.D.

Section Chief, Division
of Infectious Disease,
Mount Sinai St. Luke's
and Mount Sinai West
Hospitals

Eugene V. Kokot, Esq.

Partner (retired), Katsky
Korins LLP; Board Co-
Chair, the American-
Scandinavian Foundation
2019–present

Dr. Terje Lande

SVP and Global Head,
Data Management, AIG
General Insurance Data
Office

Christina Lang Assael

Vice Chairman, The
Assael Foundation

Hon. John L. Loeb, Jr.

U.S. Ambassador to
Denmark, 1981–1983;
Chairman, John L. Loeb,
Jr. Associates, Inc.

Helen W. Marx

Honorary Consul for
Finland, New Jersey

Michael S. Mathews

Managing Director,
Westgate Capital Co.

Ragnar Meyer-Knutson

Founder, Sealift Inc.

Linda Nordberg

Trustee Emeritus, Former
Board President, and
Advisory Board Member,
The Katonah Museum of
Art

Hon. Lyndon L. Olson

U.S. Ambassador to
Sweden, 1997–2001;
Chair, Hill + Knowlton
Strategies, Europe and
USA

Barbro Osher

President, the Barbro
Osher Pro Suecia
Foundation; Chairman,
Bernard Osher
Foundation; Honorary
Consul General of
Sweden, San Francisco

Steven B. Peri, Esq.

Attorney, Peri &
Stewart; Board Chair,
American-Scandinavian
Foundation, 2015–2019

Kristján T. Ragnarsson, M.D.

Emeritus Professor
and Chairman, Icahn
School of Medicine,
Mt. Sinai Medical
Center; Board Chair,
American-Scandinavian
Foundation, 2000–2003

Lennard K. Rambusch, Esq.

Partner (ret.), Holland &
Knight (ret.)

Henrik Roos

Private Equity Investor &
Board Member

Marcus Siezing

Director of Investments,
Dillon Trust Company

Tómas Már Sigurdsson

Chief Executive Officer,
HS Orka, Iceland

Asbjørn Skretting

President, Equinor
Natural Gas LLC

Henrik Steffensen

General Manager and
Executive Vice President,
Nordea Bank Abp, New
York Branch

James M. Stewart**Lise Stolt-Nielsen**

Inger M. Tallaksen
IMT Consulting

Thor Thors, Jr.

Vice Chairman,
Icelandic-American
Chamber of Commerce

Agnes Ahlander Turner

Vice President, Marie B.
Campbell Associates

Liv Ullmann

Actress/Director

Rutger von Post

Partner, Oliver Wyman

Mats Wermelin

Executive Vice President
and General Manager,
DNB North America
Division

Arthur Zeckendorf

Co-Chairman, Brown
Harris Stevens LLC
Group

**ADVISORY
TRUSTEES****Karl G. Andrén**

Chairman and CEO (ret.),
New York Cruise Lines, Inc.

Dr. Patricia G. Berman

Professor of Art,
Wellesley College

Hon. Stuart A. Bernstein

Chairman, Bernstein
Companies;
U.S. Ambassador to
Denmark, 2001–2005

W. Grant Callow

Attorney, Law Office of
William Grant Callow;
Honorary Danish Consul
for Alaska

Hon. Charles E. Cobb, Jr.

Chairman and CEO,
Cobb Partners; U.S.
Ambassador to Iceland,
1989–1992

Lars W. Colliander**Alpo Franssila Crane**

Private Investor

Albert R. Dowden

President and CEO
(ret.), Volvo Group North
America, Inc.; Board
Chair, American-
Scandinavian Foundation,
1995–2000

Craig Dykers

Co-Founder, Snøhetta

**Hon. Charles S. Haight,
Jr.**

U.S. District Judge for the
District of Connecticut;
Board Chair, American-
Scandinavian Foundation,
1971–1976

Bengt Holmström

Professor Emeritus of
Economics, MIT

Kaarina Koskenalusta

CEO, Global Initiatives
Partners, LLC; Co-Founder
and Board Member, The
World Innovation Network

Dr. Peter F. Krogh

Dean Emeritus, The
Walsh School of Foreign
Service, Georgetown
University.

Øivind Lorentzen III

CEO, Treehouse Partners
Corp.

Ólafur J. Ólafsson

Former Vice Chairman,
Time Warner Digital
Media

Dr. Rose-Marie Oster

Professor Emerita,
Germanic Studies,
University of Maryland

Bernt Reitan

Executive Vice President
(ret.), Alcoa and Group
President (ret.), Alcoa
Primary Products (ret.);
Board Co-Chair,
American-Scandinavian
Foundation, 2009–2012

Marcus Samuelsson

Chef, Restaurateur, and
Co-Owner Red Rooster
Harlem

Robert Storr

Former Dean, Yale School
of Art

Helgi Tómasson

Artistic Director, San
Francisco Ballet

Thórunn Wathne**Torsten N. Wiesel**

President Emeritus, The
Rockefeller University

Hon. Michael M. Wood

Chairman, Redwood
Investments LLC; U.S.
Ambassador to Sweden,
2006–2009

**OVERSEAS ADVISORY
TRUSTEES****Gudrun Aspelund, M.D.**

Head of Surveillance
and Outbreak
Investigation, Centre
for Health Security and
Communicable Disease
Control, Directorate of
Health, ICELAND

Magnús Bjarnason

Managing Partner, MAR
Advisors, ICELAND

Rune Bjerke

Former President and
CEO, DNB NOR AS,
NORWAY

Nalini Bonnier

SWEDEN

Klaus Cawén

Executive Advisor, KONE
Corporation, FINLAND

Carl Gustaf Ehrnrooth

Partner, Bentmind Ltd.,
FINLAND

Orri Haukson

CEO, Síminn hf,
ICELAND

Jens P. Heyerdahl d.y.

Former Group CEO, Orkla
ASA, NORWAY

Niels Jacobsen

CEO, William Demant
Invest A/S; Chairman,
LEGO A/S, 2008–2017,
DENMARK

Jonas Kleberg

CEO, Soya Group,
SWEDEN

Lars Liebster

Former CEO, Tivoli A/S,
DENMARK

Jorma Ollila

Chairman, Innoark Oy,
FINLAND

Fritz Schur

Chamberlain; Consul
General, DENMARK

Nina Skage

Vest Corporate Advisors,
NORWAY

Nadia Stolt-Nielsen

NORWAY

**Ane Mærsk Mc-Kinney
Uggla**

Vice Chairman of
the Board, A.P. Møller
– Mærsk A/S; Vice
Chairman, A.P. Møller
and Chastine Mc-Kinney
Møller Foundation,
DENMARK

Björn Wahlroos

Chairman, Sampo plc.,
FINLAND

Jacob Wallenberg

Chairman, Investor AB,
SWEDEN

**Baron Henrik Wedell-
Wedellsborg**

Attorney; Chamberlain,
DENMARK

FELLOWSHIPS & GRANTS



—ASF FELLOW MARK BLASHFORD—IMAGE COURTESY OF MARK BLASHFORD

For more than 100 years the ASF Fellowships & Grants Program has awarded funds to Americans and Scandinavians engaged in study, research, or creative arts projects. The first ASF grants were made to three philologists in 1912 as one of the earliest programs of the newly established Foundation's mission to promote educational and cultural exchange between the U.S. and the Nordic countries. Since then, more than 7,500 scholars, researchers, policymakers, artists, and professionals have received support for their work in areas now as far-ranging as medicine and the sciences, economics and political history, the arts, and literature.

Nearly 120 new Scandinavian and American Fellows received financial support from ASF for study and research projects abroad throughout the two-year period of this report. During the 2019–20 competition, \$659,275 was awarded to 58 fellows from the U.S. and the Nordic countries; \$680,050 was awarded to 60 fellows in the 2020–21 competition. Fellowships and grants range between \$5,000 and \$23,000 and are awarded to graduate students, post-graduate scholars, professionals, and artists pursuing independent projects.

In 2017, ASF initiated two new grant programs to support Scandinavian folk arts and cultural traditions in the Upper Midwest (defined as North Dakota, South Dakota, Iowa, Minnesota, Wisconsin, and the Upper Peninsula of Michigan): Folk Arts Fellowships and Public Program/Community Project Grants. These programs recognize and celebrate the mastery of individual artists and practitioners, facilitate the cultivation of skills and understanding of Scandinavian traditions among younger generations, bring greater visibility to the arts, and highlight the importance of cultural expression to all our lives. The programs further ASF's goal of celebrating and preserving Nordic (Denmark,

Finland, Iceland, Norway, Sápmi, and Sweden) cultures throughout the United States. During 2019-20, \$60,670 was awarded in fellowships to nine artists and \$88,635 was awarded in grants to five public programs and community projects. During 2020-21, \$56,000 was awarded in fellowships to six artists and \$70,950 was awarded in grants to seven public programs.

Because of the pandemic's impact on travel as well as university and research center operations, it has been crucial for ASF to work with all fellows on a case-by-case basis to incorporate changes in some projects and approve postponements for others. Throughout the pandemic, ASF remained as flexible as possible to ensure that fellows can pursue their research and/or study plans as originally conceived.

ASF has over 40 funds that it holds on a long-term basis, using the income to fund fellowships and grants, including: Mathilde Aas Memorial Fund • Carl G. and Rikke Fredriksen Barth Memorial Fund • John G. Bergquist Fellowship in Chemistry Fund • Bernadotte Fund • Sven and Ingrid Bernhard Fund • Crown Princess Märtha Friendship Fund • The Eugene and Siri Delafield Scholarship Fund • Jane and Aatos Erkkö Fund • Finnish Fund • Former Fellows Fund • Icelandic Crafts Fund • Carl Olaf, Marie, and Katherine Elizabeth Johnson Fellowship Fund • Henrik Kauffmann Fund • King Haakon VII Birthday Fund • King Olav V 70th Birthday Fund • Helen Lee and Emil Lassen Fellowship Fund • Hans Knudsen Lorentzen Memorial Fund • Rev. Lars R. Lund Fund for Nordic Literature • Martha and Jack McFall Fund • The Peter and Birgit Faber Morse Fund • New Sweden '88 Cultural and Educational Fund • The Dr. Mary Jane Oestmann Fellowship Fund in the Sciences • Philip W. Pfeifer III Fund • Amanda E. Roleson Fund • Sather Fund • Leif and Inger Sjöberg Fund

FELLOWS 2019-20

FROM DENMARK

LONG-CALLESEN, SEMINE

TO—Massachusetts
Institute of Technology

MSc-Directed Study,
Architectural Studies.
Henrik Kauffmann Fund

KIM-LARSEN, METTE AGNETTE EUNHEE

TO—Columbia
University

MSc-Directed study,
Anthropology. *Henrik
Kauffmann Fund*

TO DENMARK

GESME, RYAN FROM—University of Tennessee, Knoxville TO—University of Southern Denmark

Dissertation Research,
History. *Henrik
Kauffmann Fund; Hans
Knudsen Lorentzen
Memorial Fund; Carol and
Hans Christian Sonne
Fellowship Fund*

HEKKALA, EVAN FROM—Fordham University TO—Center for Geogenetics, University of Copenhagen

Faculty Research,
Archeogenetics/
Bioarchaeology. *Peter
and Birgit Faber Morse
Fund*

KATZ, JAMIE FROM—Katz Glass Studio TO—Glasmuseet Ebeltoft

Independent Research,
Visual Arts – Glass.
*Helen Lee and Emil
Lassen Fellowship Fund;
Amanda E. Roleson Fund;
Carol and Hans Christian
Sonne Fellowship Fund*

MADSEN, PAMELA FROM—California State University, Fullerton TO—Royal Danish Academy of Music

Visiting Researcher,
Music. *Sven & Ingrid
Bernhard Fund*

TURLEY, CAMERON FROM—The Graduate Center, CUNY TO—Greenland National Museum and Archives, National Museum of Denmark

Dissertation Research,
Anthropology/
Archaeology. *Amanda E.
Roleson Fund*

FROM FINLAND

All candidates
recommended by The
League of Finnish-
American Societies
(Suomi-Amerikka
Yhdistysten Liitto) in
Helsinki

GREIS, MAIJA TO—University of Massachusetts, Amherst

Dissertation Research,
Food Technology. *Finnish
Fund*

HUIKURI, TUULI- ANNA TO—University of Michigan

Dissertation Research,
International Relations
and Political Science.
*Saara and Björn
Wahlroos Fellowship
Fund*

KELEKAY, JASMINE TO—University of California, Santa Barbara

PhD-Directed Study,
Sociology. *Jane and
Aatos Erkko Fund*

KIVIJÄRVI, SANNA TO—Columbia University

Dissertation Research,
Music Education. *Thor
and Saimi Soderholm
Fund; Martha and Jack
McFall Fund; Finnish
Fund*

KOIVUKOSKI, JOONAS TO—Temple University

Dissertation
Research, Media and
Communication Studies.
*Martha and Jack McFall
Fund*

TO FINLAND

NIEMISTO, PAUL FROM—St. Olaf College TO—Sibelius Academy, Band of the Helsinki Guards

Postdoctoral Research,
Music. *Jane and Aatos
Erkko Fund*

FROM ICELAND

All candidates
recommended by The
Icelandic-American
Society (Íslensk-
Ameríska Félagið),
Reykjavík.

HILMARSSON, HELGI TO—Stanford University

MSc-Directed Study,
Computational
and Mathematical
Engineering. *Thor Thors
Memorial Fund; Charles
K. Willey Memorial Fund*

HJÁLMARSDÓTTIR, NINA SIGRIDUR TO—New York University

MA-Directed Study,
Performance Studies.
*Thor Thors Memorial
Fund*

JANSSON, AXEL ÖRN TO—Columbia University

MSc-Directed Study,
Electrical Engineering.
*Charles K. Willey
Memorial Fund*

KALDAL, SÓLEY TO—Yale University

MA-Directed Study,
Global Affairs. *Charles K.
Willey Memorial Fund*

ÓMARSSON, INGVI HRANNAR TO—Stanford University

MA-Directed Study,
Education. *Thor Thors
Memorial Fund*

PÁLSDÓTTIR, SANDRA ÝR TO—New York University

MSc-Directed Study,
Integrated Marketing.
*Carl G. and Rikke
Fredriksen Barth
Memorial Fund; Charles
K. Willey Memorial Fund*

RÍKHARÐSDÓTTIR, KRISTIN HELGA TO—New York University

MFA-Directed Study,
Studio Art. *Thor Thors
Memorial Fund*

TO ICELAND

HOWE, CYMENE
FROM—Rice University
TO—University of Iceland

Postdoctoral Research, Climate Change Studies/Social Science. *Scandinavian Seminar*

KHALSA, SANT MUKH
FROM—The Graduate Center, CUNY
TO—Fornleifastofnun Íslands (The Institute of Archaeology, Iceland)

Dissertation Research, Archaeology. *Scandinavian Seminar*

RIVERS, JOSHUA
FROM—University of Wisconsin, Milwaukee
TO—University of Iceland

Dissertation Research, Anthropology. *Thor Thors Memorial Fund; Former Fellows Fund*

FROM NORWAY

All candidates recommended by The Norway-America Association (Norge-Amerika Foreningen), Oslo

ANDERSEN, THEA CHARLOTTE
TO—George Washington University

JD-Directed Study, International Law. *Andrew E. and G. Norman Wigeland Fund*

BARLAUP, ASGEIR
TO—Tufts University

MA-Directed Study, Law & Diplomacy. *Martha and Jack McFall Fund; King Haakon VII Birthday Fund; Carl Olaf, Marie and Katherine Elizabeth Johnson Fellowship Fund*

BØE, ERIC
TO—University of California, Berkeley

MSc-Directed Study, Mathematics. *Norway House Foundation*

BRULAND, RAGNHILD
TO—The New School for Social Research

PhD-Directed Study, Psychology. *Andrew E. and G. Norman Wigeland Fund*

DAHL, DANIELLE
TO—California Institute of the Arts

MFA-Directed Study, Music. *Norway House Foundation*

DAZAN, CHARLOTTE
TO—Rhode Island School of Design

MFA-Directed Study, Fine Arts Photography. *Andrew E. and G. Norman Wigeland Fund*

EVENSEN, CHARLOTTE BJØRNHAUG
TO—University of California, Berkeley

Dissertation Research, Economics. *Norway House Foundation*

GJERTSEN, KNUT OLAV
TO—Columbia University

MSc-Directed Study, Applied Analytics. *Andrew E. and G. Norman Wigeland Fund*

GREVSTAD, HANS ANDERS
TO—Zicklin School of Business, Baruch College

MBA-Directed Study. *Andrew E. and G. Norman Wigeland Fund*

GROTLE, ANN-KATRIN
TO—University of Texas at Austin

PhD-Directed Study, Exercise Physiology. *Stolt-Nielsen Fund for Education*

KALLEBERG, SILJE KNUTSVIK
TO—University of California, San Diego

Graduate Research, Civil and Environmental Engineering. *Norway House Foundation*

LAVELLE, MARIA
TO—New York University

MFA-Directed Study, Filmmaking. King Olav V 70th Birthday Fund; *Andrew E. and G. Norman Wigeland Fund*

MOSSLEMI, MARJAN
TO—University of California, Irvine

PhD-Directed Study, Transportation Systems Engineering. *Norway House Foundation*

ROLAND, STINE
TO—New York University

MA-Directed Study, Industrial and Organizational Psychology. *Mathilde Aas Fund*

SAMUELSEN, HELGE JØRGEN
TO—University of California, Berkeley

Graduate Research, Industrial Mathematics. *Norway House Foundation*

TO NORWAY

COUGHLIN, JENNA
FROM—St. Olaf College
TO—University of Oslo

Postdoctoral Research, Literature. *Alice and Corrin Strong Fund*

DYMIT, ELLEN
FROM—Emory University
TO—University of Tromsø

Post-Baccalaureate Research, Conservation Ecology. *Scandinavian Seminar*

FU, VICTORIA
FROM—University of San Diego
TO—Henie Onstad Kunstsenter

Creative-Arts Project Visual Arts—Video Art Installation. *Crown Princess Märtha Friendship Fund*

HODIL, EARL
FROM—Yale University
TO—Norwegian National Archive

Dissertation Research, History. *James L. Howard Grant*

KROUK, DEAN
FROM—University of Wisconsin, Madison
TO—National Library, Oslo

Postdoctoral Research, Literature. *Alice and Corrin Strong Fund*

STORFJELL, TROY
FROM—Pacific Lutheran
University
TO—UiT Norway's
Arctic University and
Árran Lule Sámi Centre

Postdoctoral Research,
 Literary and Cultural
 Studies. *Scandinavian*
Seminar

WOOD, LESLI
FROM—Colorado School
of Mines
TO—University of
Bergen

Postdoctoral Research,
 Earth Science. *King Olav*
V 70th Birthday Fund

FROM SWEDEN

All candidates
 recommended by the
 Swedish Fulbright
 Commission, Stockholm

SCHREIBER,
EVELYN
TO—Columbia
University

MA-Directed Study,
 Journalism. *Marcus*
and Amalia Wallenberg
Memorial Fund

ÅSTRAND, OLIVER
TO—New York
University

MSc-Directed Study,
 Computer Science. *Dr.*
Mary Jane Oestmann
Fellowship Fund;
Thord-Gray Memorial
Scholarship Fund

NADEMI, NIOUSHA
TO—Columbia University

LLM-Directed Study.
Marcus and Amalia
Wallenberg Memorial
Fund

NYSTRÖM, PETTER
TO—Harvard University

LLM-Directed Study.
Marcus and Amalia
Wallenberg Memorial
Fund

RÄTTZÉN, MATTIAS
TO—Harvard University

LLM-Directed Study.
Thord-Gray Memorial
Scholarship Fund

TO SWEDEN

GHANOUI, SANIYA
FROM—University
of Illinois, Urbana-
Champaign
TO—Swedish
Association for
Sexuality Education
and University of
Gothenburg

Dissertation Research,
 History. *Philip W. Pfeifer*
III Fund

MUELLER-
VOLLMER, TRISTAN
FROM—University of
Wisconsin, Madison
TO—Uppsala University

Dissertation Research,
 Runology. *Thord-Gray*
Memorial Scholarship
Fund; *Scandinavian*
Seminar; *Peter and Birgit*
Faber Morse Fund

DAVIES, ADAM
TO—Vasa Museum,
Stockholm

Creative Arts Project,
 Visual Arts—Literature/
 Photography. *Thord-*
Gray Memorial
Scholarship Fund

KLESSIG, BARBARA
FROM—University of
Exeter, UK
TO—Gotland Fornsal
Museum and Gotland
Campus, Uppsala
University

Dissertation Research,
 Archaeology. *Peter and*
Birgit Faber Morse Fund

McDONALD,
MATTHEW
FROM—Princeton
University
TO—Uppsala University

Dissertation Research,
 History. *Thord-Gray*
Memorial Scholarship
Fund

STACHURA, ERIC
FROM—Kennesaw State
University
TO—FOI: Swedish
Defense Research
Agency

Postdoctoral Research,
 Applied Mathematics.
Thord-Gray Memorial
Scholarship Fund

WICKERSHAM,
JOAN
TO—Vasa Museum,
Stockholm

Creative Arts Project,
 Visual Arts—Literature/
 Photography. *Thord-*
Gray Memorial
Scholarship Fund

TO MULTIPLE COUNTRIES

BUSCHMAN,
VICTORIA
FROM—University of
Washington
TO—Conservation of
Arctic Flora and Fauna,
Arctic Council

Dissertation Research,
 Conservation Biology.
Scan Design Foundation

FELLOWS 2020-21

FROM DENMARK

DAM ZISKA, JENS
TO—University of
California, Los Angeles

Postdoctoral Research,
 Philosophy. *Henrik*
Kauffmann Fund

KRUSE, MAJA
TO—University of Maine

PhD, Holocaust Studies.
Kulin Family Fund

LACOUR, EMILIE
TO—Georgetown Uni-
versity

MA, Security Studies.
Henrik Kauffmann Fund

SKAJAA, NILS
TO—Harvard Medical
School

PhD, Clinical Epidemiology.
Henrik Kauffmann Fund

TO DENMARK

BICK, EMILY
FROM—University of
Copenhagen
TO—University of
Copenhagen

Postdoctoral Research,
 Ecological Modelling.
Peter and Birgit
Faber Morse Fund;
Scandinavian Seminar

BUDINICH, JAMES
FROM—Duke University
TO—Royal Danish
Academy of Music

Dissertation Research,
 Music Composition.
Sven & Ingrid Bernhard
Fund; *Helen Lee and Emil*
Lassen Fellowship Fund;
Henrik Kauffmann Fund

DAHLBERG, CAROLINE

FROM—Western Washington University
TO—University of Copenhagen

Sabbatical Research, Biology. *Høst; Amanda E. Roleson Fund; Margaret Sorensen Burke Fund*

FIELD, LES

FROM—University of New Mexico
TO—University of Greenland

Sabbatical Research, Cultural Anthropology. *Scandinavian Seminar*

GIOVINCO, STEVEN

FROM—New York, NY
TO—East Greenland

Creative Arts Project, Visual Arts: Photography. *Scandinavian Seminar*

HUGUS, FRANK

FROM—University of Massachusetts Amherst
TO—Det Kongelige Bibliotek

Monograph Research, Literary Research. *Amanda E. Roleson Fund*

MARTIN, MORGAN

FROM—University of Southern Denmark
TO—University of Southern Denmark

Postdoctoral Research, Animal Behavior. *Helen Lee and Emil Lassen Fellowship Fund; Amanda E. Roleson Fund; Carol and Hans Christian Sonne Fellowship Fund; Former Fellows Fund; Hans Knudsen Lorentzen Memorial Fund*

MCKEE, CAMERON (C.C.)

FROM—Bryn Mawr College
TO—Saxo Institute and Rigsarkivet

Monograph Research, Art History. *Amanda E. Roleson Fund*

FROM FINLAND

All candidates recommended by the League of Finnish-American Societies (Suomi-Amerikka Yhdistysten Liitto), Helsinki

ERIKSSON, SARA

TO—University of California, Berkeley

PhD, Anthropology. *Martha and Jack McFall Fund*

HÄNNINEN, MIRA

TO—Harvard Law School

LLM, International Business Law. *Saara and Björn Wahlroos Fellowship Fund*

MAKKONEN, HANNA

TO—Arizona State University

MFA, Studio Art. *Martha and Jack McFall Fund; Thor and Saimi Soderholm Fund*

SEPPÄLÄ, MILA

TO—University of Texas at Austin

PhD, Political Science. *Saara and Björn Wahlroos Fellowship Fund*

SEVON, AURA

TO—University of California, Berkeley

PhD, Comparative Literature. *Thor and Saimi Soderholm Fund*

TO FINLAND**ALDEFER, LAURA**

FROM—University of Notre Dame
TO—University of Helsinki and Academic Medical Center Helsinki

Dissertation Research, Bioengineering. *Jane and Aatos Erkko Fund*

VAN STAALDUINEN, BRIITTA

FROM—Harvard University
TO—VATT Institute for Economic Research

Dissertation Research, Political Science. *Jane and Aatos Erkko Fund*

WIRES, EMILY

FROM—National Institutes of Health
TO—University of Helsinki

Postdoctoral Research, Neurodegeneration and Parkinson's Disease. *Jane and Aatos Erkko Fund*

FROM ICELAND

All candidates recommended by the Icelandic-American Society (Íslensk-Ameríska Félagid), Reykjavik

HALLSDÓTTIR, ESTHER

TO—Harvard University

MPP, International and Global Affairs. *Thor Thors Memorial Fund*

KRISTINSSON, SIGFÚS HELGI

TO—University of South Carolina

PhD, Communication Sciences and Disorders. *Charles K. Willey Memorial Fund; Thor Thors Memorial Fund*

MORRIS, SAGA HELGASON

TO—Stanford University

MA, Russian, Eastern European and Eurasian Studies. *Thor Thors Memorial Fund*

RAGNARSDÓTTIR, GUÐ NÝ RAGNA

TO—Columbia Law School

LLM, Securities and Corporate Law. *Charles K. Willey Memorial Fund*

RÚNARSSON, ÍSAK EINAR

TO—Tuck School of Business at Dartmouth

MBA, Business Administration. *Carl G. and Rikke Fredriksen Barth Memorial Fund; Thor Thors Memorial Fund*

SNÆRVARR, ÁSGERGERÐUR

TO—Harvard Law School

LLM, Administrative and Constitutional Law. *Charles K. Willey Memorial Fund*

STEINSSON, SVERRIR

TO—George Washington University

PhD, Political Science. *Thor Thors Memorial Fund*

TO ICELAND**JONSDOTTIR, SALVOR**

FROM—University of Iceland
TO—University of Iceland

Dissertation Research, Geography. *Former Fellows Fund; Margaret Sorensen Burke Fund*

NORDFJORD, BJORN

FROM—St. Olaf College
TO—University of Iceland

Monograph Research, Film Studies. *Former Fellows Fund; Thor Thors Memorial Fund; Margaret Sorensen Burke Fund*

NYQUIST, CORRIE

FROM—University of Minnesota
TO—University of Iceland and Marine and Freshwater Research Institute

Dissertation Research, Biology. *Scandinavian Seminar*

ROBINSON, NICHOLAS

FROM—University of California, Davis
TO—University of Iceland

Dissertation Research, Geography. *Margaret Sorensen Burke Fund*

WELLS, GRETA

FROM—University of Texas at Austin
TO—University of Iceland

Dissertation Research, Geography. *Scandinavian Seminar*

FROM NORWAY

All candidates recommended by the Norway-America Association (Norge-Amerika Foreningen), Oslo

ABILOV, ANTON

TO—Brown University
MSc-Directed Study, Computer Science. *Andrew E. and G. Norman Wigeland Fund*

BØE, PANDORA ANGELIQUE

TO—The New School

MFA, Fine Arts. *King Håkon VII Birthday Fund; Andrew E. and G. Norman Wigeland Fund*

DAHL, DANIELLE

TO—California Institute of the Arts
MFA, Experimental Sound Practices. *Norway House Foundation*

DURAN, MARIANNE

TO—University of California, San Francisco
PharmD, Medical Sciences. *Norway House Foundation*

FRYDENBERG, SYNNE

TO—Arts Center, Pasadena
PhD, Interaction Design. *Norway House Foundation*

GREVSTAD, HANS ANDERS

TO—City University of New York
MBA, Finance. *Mathilde Aas Fund; Andrew E. and G. Norman Wigeland Fund*

HENNESTAD, VEGARD

TO—Massachusetts Institute of Technology
MSc-Directed Study in Applied Physics and Mathematics. *Haakon Styri Fellowship Fund; Stolt-Nielsen Fund for Education*

HUSØY, HAAKON

TO—Columbia University

MA, International Affairs. *Pratt/ Carl Olaf, Marie, and Katherine Elizabeth Johnson Fellowship Fund; Andrew E. and G. Norman Wigeland Fund.*

KALDHOL, NINA HAGEN

TO—University of California, San Diego
PhD, Linguistics. *Norway House Foundation*

KARLSEN-BÆCK, BIRK EMIL

TO—University of California, Berkeley
MSc-Directed Study, Applied Physics. *Norway House Foundation*

KVIE, ROSANNA MARIA

TO—Florida Atlantic University
MS, Accounting. *Andrew E. and G. Norman Wigeland Fund*

OCAMPO, JOANNE MICHELLE

TO—Columbia University
DrPh, Public Health. *Stolt-Nielsen Fund for Education; Andrew E. and G. Norman Wigeland Fund*

REITAN, ELLEN

TO—Arizona State University
PhD, Economics. *Mathilde Aas Fund; King Haakon VII Birthday Fund*

RUUD, KATARINA

TO—University of California, Berkeley
MA, Education. *Norway House Foundation*

TO NORWAY**BLOCH, ALEESE**

FROM—University of California, Davis
TO—University of Oslo
Dissertation Research, Linguistics. *Crown Princess Märtha Friendship Fund; King Olav V 70th Birthday Fund*

BURKE, PATRICK

FROM—Washington University in St. Louis
TO—University of Oslo
Monograph Research, Ethnomusicology. *James L. Howard Grant; King Olav V 70th Birthday Fund; Alice and Corrin Strong Fund; Sather Fund*

ELLENWOOD, ELIZABETH

FROM—University of Connecticut
TO—Norwegian Geotechnical Institute/
Norwegian University of Science and Technology
Postgraduate Project, Creative Arts Project: Studio Art. *Alice and Corrin Strong Fund; Scandinavian Seminar*

PAPPAS, MARYCLAIRE

FROM—Indiana University
TO—University of Oslo
Dissertation Research, Art History. *Thord-Gray Memorial Scholarship Fund*

ROSS, JESSICA

FROM—University of Notre Dame
TO—Norwegian University of Life Sciences
Dissertation Research, Biological Sciences. *Sather Fund*

WERWIE, KATHERINE

FROM—Yale University
TO—The National Archives of Norway in Oslo, The Regional State Archive of Bergen, The National Archives of Iceland

Dissertation Research, Art History. *Alice and Corrin Strong Fund*

FROM SWEDEN

All candidates recommended by the Swedish Fulbright Commission, Stockholm

AKHLAGHI, THERESIA

TO—Columbia University

MPH, Epidemiology. *Marcus and Amalia Wallenberg Memorial Fund*

EMOND, NIKLAS

TO—Georgetown University

MSFS, International Relations. *Dr. Mary Jane Oestmann Fellowship Fund; Selma C. Swanson Fund; Thord Gray Memorial Scholarship Fund*

KARLSSON, ANNA EVELINA

TO—University of Chicago

LLM. International Arbitration. *Marcus and Amalia Wallenberg Memorial Fund; Dr. Mary Jane Oestmann Fellowship Fund*

TO SWEDEN**BAKER, GRETCHEN**

FROM—Ohio State University
TO—Volvo Cars and Chalmers University of Technology

Dissertation Research, Biomedical Engineering. *Philip W. Pfeifer III Fund; Selma C. Swanson Fund*

CONRAD, JOANN

FROM—Diablo Valley College
TO—Nordic Museum, Stockholm University, Swedish Children's Book Institute, National Museum Archives and Library

Postdoctoral Research, Cultural Studies. *Bernadotte Fund*

MARCUS, TAMARA

FROM—University of New Hampshire
TO—Umeå University

Dissertation Research, Earth Sciences. *John G. Bergquist Fellowship in Chemistry Fund; Thord-Gray Memorial Scholarship Fund; Scandinavian Seminar*

SHARMA, RAJANI

FROM—Columbia University
TO—Karolinska Institutet

Postdoctoral Research, Epidemiology. *Philip W. Pfeifer III Fund*

WACKETT, ADRIAN

FROM—University of Minnesota
TO—Climate Impacts Research Centre (CIRC), Umeå Universitetet

Pre-Dissertation Research, Ecology. *Thord-Gray Memorial Scholarship Fund; Scandinavian Seminar*

FOLK ART FELLOWS 2019-20**AUSTIN, TARA**

FROM—Duluth, MN

Rosemaling, "Rosemaling Research to Learn, Develop, and Sustain."

BUSNIEWSKI, JASON

FROM—Milwaukee, WI

Folk Music/Hardanger Fiddle, "The Upper Midwestern Old-Time Music of Otto Rindlisbacher."

FREDENDALL, PHYLLIS

FROM—Hancock, MI

Finnish Weaving, "Weaving Traditions in Finland."

MACKENZIE, LAURA

FROM—St. Paul, MN

Wooden Flute Performance, "Laura MacKenzie with Amy Shaw Will Study Swedish Wooden Flute Players Ralsgård and Tullberg."

MARGERUM, ALICE

FROM—Hancock, MI

Finnish Stringed Instrument Construction, "Fostering Traditional Forms of Finnish Stringed Instruments."

PAULSON, JIM

FROM—Devils Lake, ND

Ale Bowl Carving, "Teaching Tools for Ale Bowl Carving."

REBHOLZ, KAREN

FROM—Madison, WI

Hardanger Fiddle, "Landskappleiken 2020—Hardanger Fiddle Entry and Festival Participation."

RENNAN, ARNA

FROM—Duluth, MN

Folklore Material Collection, "Collecting Songs, Folklore, and Stories from Northern Gudbrandsdalen."

ROTTOT, BETH

FROM—Decorah, IA

Folk Music Performance, "Foot-Notes & Friends Play the Music of Johan Arndt Mostad."

2020-21**CARLSON, JANS**

FROM—Rapid City, SD

Norwegian Kubbstol Construction, "Making the Traditional Norwegian Kubbstol."

MANDY, TONYA

FROM—Rapid City, SD

Rosemaling, "Rosemaling Color Study in Norway and Minneapolis."

PURDIN, SKY

FROM—West Fargo, ND

Fiber Arts/Weaving, "Nordic Weaving."

SUTTER, ROSS

FROM—Minneapolis, MN

Folk Music Workshops, "Virtual Swedish Song Workshops with Six Master Singers."

DIERCKS, OLIVIA & ELLEN STANLEY

FROM—Minneapolis, MN

Folk Music Performance, "String Duo The OK Factor Partners with JAERV to Study Swedish Folk Music."

SWENSON, DOUGLAS

FROM—Hawley, MN

Nordic Blacksmithing, "The Significance of the Blacksmith To the Daily Operation Of Scandinavian Farms During the Viking Age."

PUBLIC PROGRAMS & COMMUNITY PROJECTS 2019-20

ASI LILLA SPELMANSLAG

Minneapolis, MN

In support of the youth “Lilla lag” fiddle-playing program and promoting traditional folk through a variety of folk music exchanges that will take place both in Minnesota and in the Swedish provinces of Skåne, Småland, and Dalarna.

VESTERHEIM NORWEGIAN-AMERICAN MUSEUM

Decorah, IA

In support of Vesterheim’s intergenerational program using three different platforms: free hands-on programming geared toward families one Saturday per month; a series of four 2 to 3-hour family folk art workshops; and an intergenerational family folk art camp in August

NEW YORK MILLS ARTS RETREAT (DBA NEW YORK MILLS REGIONAL CULTURAL CENTER)

New York Mills, MN

In support of New York Mills Regional Cultural Center’s week-long residency for Kardemimmit, a four-woman Finnish ensemble who sing and play the kantele, the Finnish national instrument.

THE CEDAR CULTURAL CENTER, INC.

Minneapolis, MN

In support of The Cedar Cultural Center’s performance by Tuuletar, a vocal performance group consisting of four women from Finland who incorporate beatbox rhythms into traditional folk songs.

MILWAUKEE ART MUSEUM,

Milwaukee, WI

In support of MAM’s three-day Scandinavian Festival held in conjunction with its forthcoming exhibition “Scandinavian Design and the United States, 1890-1980.”

2020-2021

DALESBURG MIDSUMMER FESTIVAL

Vermillion, SD

In support of Norwegian rosemalers and folk music appearances by Jærv and Dalesburg Spelmanslag at the Dalesburg Midsummer Festival, a 150-year festival tradition celebrating Scandinavian and rural heritage in southeast South Dakota.

DANEVILLE HERITAGE MUSEUM

Viborg, SD

In support of educational and community programs focusing on Scandinavian heritage and culture at the Daneville Heritage Museum.

MIDWEST INSTITUTE OF SCANDINAVIAN CULTURE, INC. (NORDEN FOLK)

Eau Claire, WI

In support of Nordic folk art traditions, such as rosemaling and flat-plane wood carving, at The Tour of Traditions at Beaver Creek Nature Preserve near Fall Creek, Wisconsin from February 19-21, 2021.

MUSEUM OF DANISH AMERICA

Elk Horn, IA

In support of the Museum of Danish America’s traditional Danish midsummer Sankt Hans Aften celebration, held on June 23, for both onsite and online audiences.

NORSKEDALEN NATURE & HERITAGE CENTER

Coon Valley, WI

In support of Norskedalen’s virtual educational programming and videos for folk arts within their heritage-class offerings.

ST. OLAF LUTHERAN CHURCH

Devils Lake, ND

In support of St. Olaf Lutheran Church’s series of workshops teaching introductory ale bowl carving to youth and adults.

SWEDISH HERITAGE SOCIETY FOUNDATION

Swedesburg, IA

In support of a series of Swedish folk-art workshops at the Swedish Heritage Society Foundation’s 30th Anniversary Celebration, slated for June 2021.

PUBLIC PROJECT GRANTS 2019-21

ASF's Public Project Grants provide support for programs of Scandinavian culture, art, and thought across the United States, as well as programs presenting American culture to the Nordic countries. During 2019–2020, \$7,000 was awarded in grants to five public projects; in 2020–2021, an additional \$15,500 was awarded to six projects. In cooperation with distinguished institutions across the U.S. and abroad, funding is allocated to allow institutions of all sizes to add programming focused on Nordic culture.

AARON DAVIS HALL: HARLEM STAGE

New York, NY

In support of a theatrical presentation of Jason Timbuktu' Diakité's premier of *WaterWorks*, a new theater project inspired by his debut book *A Drop of Midnight*. *New Sweden '88 Cultural and Educational Fund*

AUGSBURG UNIVERSITY

Minneapolis, MN

In support of Augsburg University's public performance of rare and unique Nordic musical pieces from its Nordic music collection, a collection originally given to Augsburg University by ASF in the late 1960s. *Helen Lee and Emil Lassen Fellowship Fund*

BISHOP HILL HERITAGE ASSOCIATION

Bishop Hill, IL

In support of Brian "Fox" Ellis' performance at the 2021 Bishop Hill Chautauqua. *Andrew E. and G. Norman Wigeland Fund*

BLAIR THOMAS & COMPANY

Chicago, IL

In support of the artistic training and performances of Livsmedlet Theatre, a Finnish puppet company, at the Chicago Puppet Fest from January 20–22, 2022. *Finnish Fund*

COLUMBIA UNIVERSITY

New York, NY

In support of the honoraria for a speaker from Norway and a stipend for the Danish organizer at a two-day international roundtable entitled "Radical Capitalism: A Nordic Intervention," a Columbia University and Barnard College co-sponsored event which will take place in December 2021, at the Society of Fellows and the Heyman Center at

Columbia University. *Helen Lee and Emil Lassen Fellowship Fund; Andrew E. and G. Norman Wigeland Fund*

EARLY MUSIC FOUNDATION, INC.

New York, NY

In support of the EMF's New York Early Music Celebration (NYEMC), which focuses on the Nordic and Baltic regions: *Ex borealis—Nordic & Baltic Regions*. *Helen Lee and Emil Lassen Fellowship Fund*

FINLAND CENTER FOUNDATION

New York, NY

In support of a streamed online recital by the Nordic Piano Duo: Lana Suran, from Sweden, and Markus Kaitila, from Finland. Suran and Kaitila will offer a pre-Christmas online concert that will bring global visibility to Nordic music during the holiday season. *Finnish Fund*

INTERNATIONAL SERIES 2020

Seattle, WA

In support of Khambatta Dance Company presentation of the acclaimed Norwegian Haugen Productions at the 15th annual Seattle International Dance Festival (SIDF). *Andrew E. and G. Norman Wigeland Fund*

NATIONAL NORDIC MUSEUM

Seattle, WA

In support of Danish paper-cutting artist Karen Bit Vejle's travel fees and honorarium for her participation in the National Nordic Museum's exhibition entitled *Paper Dialogues: The Dragon and Our Stories*. *Scan Design Foundation Fund*

NEW YORK SCANDIA SYMPHONY

New York, NY

In support of Scandia Symphony's three Sunday concerts during the Scandinavian Music Festival at Fort Tryon Park in June 2021. *New Sweden '88 Cultural and Educational Fund*

SUSQUEHANNA FOLK MUSIC SOCIETY

New Cumberland, PA

In support of the performances of two Scandinavian folk music groups: Jaerv (an award-winning Swedish folk group) and Nordic Fiddlers Bloc (a Swedish and Norwegian folk group). with Susquehanna Folk Music Society (SFMS) in March 2020. *Andrew E. and G. Norman Wigeland Fund*

TRANSLATION PRIZES

Outstanding English translations of poetry, fiction, drama, or literary prose originally written in a Nordic language are recognized each year by ASF's Nadia Christensen Translation Prize and Leif and Inger Sjöberg Translation Prize. Inaugurated in 2019, ASF's Wigeland Prize recognizes the best translation from Norwegian by a resident of Norway.

2019

KYZER, LARISSA

Nadia Christensen Prize

Translation from Icelandic of the novel *Elín, ýmislegt* (*A Fist or a Heart*) by Kristín Eiríksdóttir. Rev. Lars R. Lund Fund for Nordic Literature

MORTENSEN, MIE

Leif and Inger Sjöberg Prize

Translation from Danish of the novel *En pige og en dreng* (*A Girl and a Boy*) by Morten Brask. This award recognizes distinguished effort by a translator whose literary translations have not previously been published. *Leif and Inger Sjöberg Fund*

LASKY, OLIVIA

Wigeland Prize

Translation from Norwegian of the novel *Våke over dem som sover* (*Watch Over Those Who Sleep*) by Sigbjørn Skåden. This award recognizes outstanding work by a Norwegian translator. *Andrew E. and G. Norman Wigeland Fund*

2020

RUSSELL, JENNIFER AND SOPHIA HERSI SMITH

Nadia Christensen Prize

Co-translation from Danish of Rakel Haslund-Gjerrild's *Alle himlens fugle* (*All the Birds in the Sky*). Rev. Lars R. Lund Fund for Nordic Literature

GLYNN, ALEXANDRA

Leif and Inger Sjöberg Prize

Translation from Finnish of Anna-Mari Kaskinen's *Laulu* (*Hymns*). This award recognizes distinguished effort by a translator whose literary translations have not previously been published. *Leif and Inger Sjöberg Fund*

VISITING LECTURESHIP

Each year, ASF offers funding to American colleges and universities to support a semester long visiting lectureship by a distinguished scholar from Norway along with a travel stipend so that the lecturer can speak at other institutions in the U.S. While we had a visiting lecturer from 2019-20, we did not have one in 2020-21 because of the pandemic's impact on travel and in-person instruction at universities.

2019-20

OHIO NORTHERN UNIVERSITY, OH

Pettit College of Law LLM Democratic Governance and Rule of Law

In support of Prof. Tom Syring (Center for Studies of Genocide and Religious Minorities and Max Planck Institute for Comparative Public Law and International Law), Spring Semester 2020. *Andrew E. and G. Norman Wigeland Fund*

INTERNSHIPS & TRAINING



—ASF INTERN KEVIN KALDVANSVIK AT NASA AMES RESEARCH CENTER—PHOTO COURTESY KEVIN KALDVANSVIK

The American-Scandinavian Foundation's Internship & Training Program facilitates cultural and educational exchange between the United States and the five Nordic countries. During the two-year period covered by this report, ASF welcomed 47 young Scandinavians to the United States to participate in internships and training programs in 12 states. This precipitous drop in number of participants was due to the COVID-19 pandemic and the ensuing travel ban put forth by the U.S. Government.



—ASF INTERN MARIA FRIIS IN COLORADO—PHOTO COURTESY MARIA FRIIS

Despite the pandemic, students and young professionals were able to participate in robust programs within many different industries ranging from cybernetics and robotics to international business and marketing. Each participant is welcomed by the host firm as a member of the team and receives a direct, personal introduction to American practices in his or her professional field. Designated by the U.S. Department of State, ASF provides J-1 visa sponsorship for these ambitious participants, making it possible for them to acquire hands-on experience and gain new skills and knowledge. ASF has welcomed more than 16,000 interns and trainees since initiating this program in 1949. Scandinavian interns and trainees gain valuable professional experience and build beneficial relationships, while learning American business techniques to be applied in their home countries. ASF is grateful to the many American businesses and organizations that have made it possible for these interns and trainees to have this experience.

In addition to assisting Scandinavian interns and trainees with the J-1 visa sponsorship and application process, ASF promotes international exchange and understanding by providing program participants with information about various aspects of American culture. This effort was initiated in 2012 when the U.S. Department of State encouraged sponsors to focus on the cultural aspects of exchange programs. As a result, ASF launched a series of regular events for its New York area participants, offering opportunities to attend various Broadway musicals, holiday parties, and sporting events, and strives to expand these opportunities across the country. ASF also distributes a monthly guide to American culture.

Since 1980 ASF has worked closely with a group of engineering students from Chalmers University. ASF assists the students with practical arrangements for summer internships in the United States and provides J-1 visa sponsorship. The students begin their experience in the United States as a group with a visit to New York City and an orientation session at ASF's offices at Scandinavia House. Unfortunately, we were unable to host this orientation in 2020 and 2021 due to the pandemic. ASF is proud to continue its support of these motivated students and wishes past, and future participants continued success in their endeavors.

TO APPLY

Visit amscan.org/internships-and-training for more information and guidelines on how to apply for J-1 visa sponsorship through the American-Scandinavian Foundation's Internship & Training Programs.

HOST FIRMS IN THE UNITED STATES

Over the course of this report ASF sponsored J-1 visas for interns and trainees in 12 states. Many of the host firms listed below have ongoing relationships with ASF and regularly offer internship and training positions to Scandinavians.

California

Monte Stott & Associates, Phillips Auto, Northern.tech, Inc., NASA, Ocean Brother LLC, Innovation Norway

Colorado

The Abbey Collection, WorkInProgress



—MANS MEDIN—PHOTO COURTESY OF MANS MEDIN

Florida

Honorary Consulate of Finland / FACC, DRMP, Inc.

Georgia

RELEX Solutions Inc.

Illinois

Swedish American Museum, Transgroup International

Iowa

Museum of Danish America

Maryland

NASA

Michigan

The Finnish American Reporter, Finnish American Heritage Center, FEV North America, Inc.

New Hampshire

ECCO USA, Inc.

New Jersey

Battleship New Jersey Museum

New York

DIDB NYC Inc., VisitDenmark, Finnish Cultural Institute in New York, Fritz Hansen Inc., SACC, Inc., Innovation Norway, Ole & Steen, Office Magazine, Winston & Strawn LLP, Lost City Arts, Work AC

Virginia

NADIC

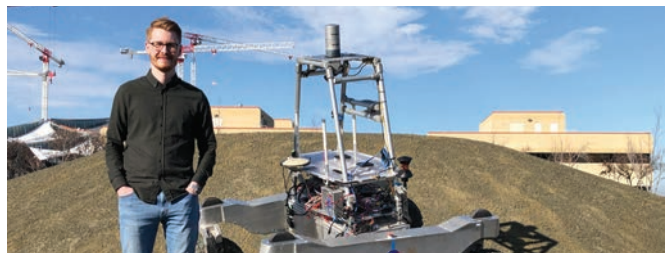


—NELLI LAURIO—PHOTO COURTESY NELLI LAURIO

ASF INTERNS & THEIR EXPERIENCES

"This has definitely been a year for the history books. In general, though, I have to say it has been a great one for me. I have been lucky when meeting friends and we have enjoyed Michigan to the maximum extent of what has been possible. In mid-November I took the chance to use some saved PTO days and travel to Hawaii and spend one and a half weeks on Oahu. That was fantastic!"—**Fredrik Kuylenstierna, FEV North America, Inc., Ann Arbor, MI**

"I worked in the Astrobe robot software project, where I helped the team develop new software for the robot and specifically worked on path planning and obstacle avoidance. I was able to make Astrobe able to go from any place on the ISS to another without collisions [and] participated in meetings for the Intelligent Robotics Group and the Astrobe robot software team. I would recommend interning at NASA. They [have] a great program that has a lot of activities to make sure that we have things to do after work and to socialize. There were also a lot of tours of the center, which gave a unique insight into how it is to work at NASA."—**ASF Intern Kevin Kaldvansvik, NASA Ames Research Center, Mountain View, CA**



—KEVIN KALDVANSVIK—PHOTO COURTESY KEVIN KALDVANSVIK

SCANDINAVIA HOUSE PROGRAMS



—CUTTING EDGES: NORDIC CONCRETE ART FROM THE ERLING NEBY COLLECTION—IMAGE BY LORI FREDRICKSON/ASF

Each year the American-Scandinavian Foundation presents more than 150 cultural and educational programs at Scandinavia House: The Nordic Center in America. In addition to serving as the headquarters for ASF, Scandinavia House is a showcase for Nordic culture and a forum for the exchange of ideas and information. During the 2020–21 pandemic, Scandinavia House began offering programs online through a range of virtual exhibitions and visual art programs; virtual film screenings and film talks; virtual panels, lectures, and book talks; virtual children's workshops, read-alouds, and holiday crafts; and an online book club.

EXHIBITIONS

The American-Scandinavian Foundation presents museum-quality exhibitions at Scandinavia House that highlight excellent artistic achievements in the Nordic countries, covering both historical and contemporary subjects in a wide variety of media. Exhibitions at Scandinavia House are presented in the third floor galleries: Stolt-Nielsen Gallery; Inger G. and William Ginsberg Gallery; Hartvig and Olette Gundersen Gallery; and Leif Höegh Gallery. With the 2020 closure of our galleries due to the COVID pandemic, ASF began to produce virtual visual art programming, including Scandinavia House's first interactive digital exhibition *Conversations with a Shipwreck* in 2021.

Cutting Edges: Nordic Concrete Art from the Erling Neby Collection

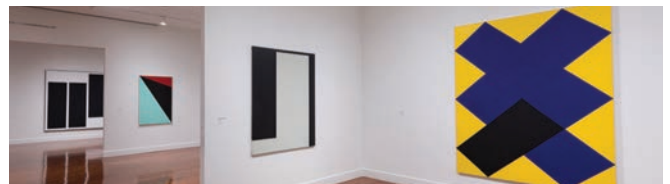
SAT–10-12-2019 THROUGH SAT–2-15-2020

Cutting Edges: Nordic Concrete Art from the Erling Neby Collection presented concrete art from the Nordic countries in a collection never before seen in the U.S.

Curated by Karin Hellandsjø, Director Emeritus of the Henie Onstad Art Centre, this exhibition presented over 30 key works from major artists in painting, drawing, and sculpture sharing use of bright colors and geometric edges.. Artists in this exhibition included Olle Bærtling, Lars Erik Falk and Lars Englund (Sweden); Richard Mortensen and Robert Jacobsen (Denmark); Kristján Guðmundsson (Iceland); Gunnar S. Gundersen, Arne Malmedal, Kristin Nordhøy, Aase Texmon Rygh and Bjørn Ransve (Norway); and Lars-Gunnar Nordström, Sam Vanni, Paul Osipow and Matti Kujasalo (Finland).

Conversations with a Shipwreck: Digital Exhibition **THU–3-24-2021 THROUGH TUE–9-7-2021**

The first interactive digital exhibition presented by Scandinavia House, *Conversations with a Shipwreck* was a multimedia meditation on the Swedish warship Vasa, created in a unique collaboration of word and image by ASF Fellows Joan Wickersham and Adam Davies. Through presentations of poems and large-format photographs, with short durational video and audio, this digital art and literary exhibition responded to the legendary warship — which sank only minutes into her maiden voyage — exploring themes of memory and oblivion, technological triumph and fiasco, permanence and impermanence, mortality and time. The exhibition also highlighted the ASF Fellowships & Grants programs, which demonstrate the Foundation's longstanding commitment to educational cultural exchange.



—CUTTING EDGES—PHOTO BY EILEEN TRAVELL/ASF



—CONVERATIONS WITH A SHIPWRECK—ADAM DAVIES, STARBOARD, 2019 (DETAIL)

VISUAL ARTS PROGRAMMING

During the initial period of the pandemic, ASF was pleased to offer online virtual guided tours of some of Scandinavia House's most celebrated exhibitions. Continuing to stream on our YouTube channel, guided tours explored the exhibitions through a combination of installation photos, slides of artwork, and audio commentary.

Scandinavia House Virtual Gallery Tours THU—4-16 THROUGH WED—8-19-2020

Independent Visions: Helene Schjerfbeck and Her Contemporaries, from the Collection of Ateneum, Finnish National Gallery

Sámi Stories: Art and Identity of an Arctic People

Saga Sites: Landscapes of the Icelandic Sagas

Prize Prints: The Queen Sonja Award

Darkness & Light: Contemporary Nordic Photography

Painting Tranquility: Masterworks by Vilhelm Hammershøi from SMK – The National Gallery of Denmark

Iceland: Artists Respond to Place

Unnatural Formations: Three Contemporary Photographers

Danish Paintings from the Golden Age to the Modern

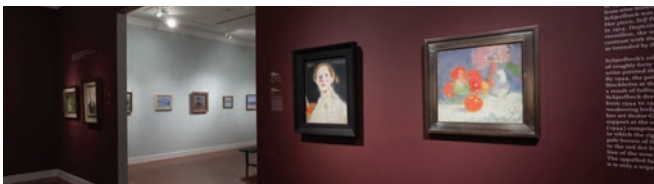
Breakthrough: Selections from the Collection of Ambassador John L. Loeb Jr.

Nordic Models + Common Ground: Art and Design Unfolded

Another North: Landscape Reimagined

North by New York: New Nordic Art

New Wave Finland: Contemporary Photography from the Helsinki School



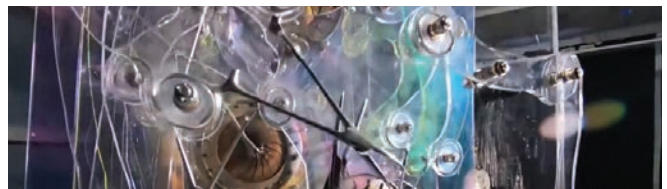
—INDEPENDENT VISIONS—PHOTO BY EILEEN TRAVELL/ASF(SOMMERDAG)



—SHOPLIFTER (HRAFNHILDUR ARNARDÓTTIR)—PHOTO BY RIO GANDARA

VIRTUAL STUDIO VISITS

Ongoing online on the SH YouTube channel are a series of Virtual Studio Visits, featuring contemporary artists working within the Nordic region, or exploring their Nordic roots through art and culture. Nordic studio visits have included artists in Finland, Iceland, and Norway, accompanied by two studio visits with ASF Folk Art Fellows located in Duluth, MN and Grand Forks, ND.



—PEKKA & TEIJA ISORÄTTYÄ STUDIO VISIT—COURTESY PEKKA & TEIJA ISORÄTTYÄ

All studio visits premiere via the website and remain available to stream on YouTube.

Virtual Studio Visit with Pekka & Teija Isorättyä
Premiere: SAT-11-21-2020

Virtual Studio Visit with Camilla Vuorenmaa
Premiere: SAT-12-20-2020

Virtual Studio Visit with w/Shoplifter (Hrafnhildur Arnardóttir)
Premiere: SAT-2-6-2021

Virtual Studio Visit with Ida Lorentzen
Premiere: FRI-3-12-2021

Virtual Studio Visit with Heidi Hankaniemi
Premiere: SAT-5-22-2021

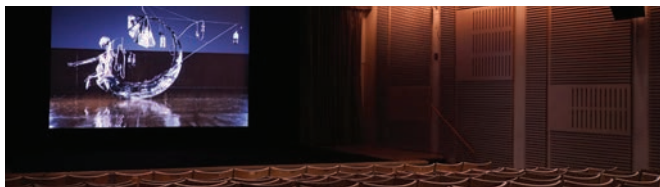
Virtual Studio Visit with Alison Aune
Premiere: SAT-6-5-2021



—HEIDI HANKANIEMI—PHOTOS COURTESY HEIDI HANKANIEMI

SCANDINAVIA HOUSE PROGRAMS CONTINUED

FILMS



—VICTOR BORGE HALL, SCANDINAVIA HOUSE—IMAGE BY LORI FREDRICKSON/ASF

ASF regularly holds film screenings in Victor Borge Hall, named in honor of the legendary Danish entertainer in recognition of his unwavering devotion to Scandinavian culture and his generosity to Scandinavia House. Beginning during the pandemic, films were offered virtually through the streaming platform Elevant, available to viewers across the U.S.

Department Q

WED-07-10-2019 THROUGH THU-07-25-2019

The Keeper of Lost Causes/Kvinden I buret

The Absent One/Fasandræberne

A Conspiracy of Faith/Falskepost fra P

Cold Case Hammarskjöld

WED-8-14-2019



—COLD CASE HAMMARSKJÖLD—IMAGE COURTESY MAGNOLIA PICTURES

Hunting Flies/Fluefangeren

SAT-09-28-2019

Wayward Endeavors: Comedies from the North

FRI-10-04-2019 THROUGH FRI-11-1-2019

The St. Bernard Syndicate /Sankt Bernhard Syndikatet

Heavy Trip /Hevi Reissu

Pity the Lovers /Vesalings Elskendur

The Cake General / Tårtgeneralen

Opportunity Knocks /Norske byggeklosser

And Then We Danced

MON-10-28-2019

The Birds /Fuglane

TUE-10-29-2019



—THE LITTLE COMRADE—FILM STILL BY PRIIT GREPP

New York Baltic Film Festival

THU-11-7-2019 THROUGH SUN-11-10-2019

Baltic Way

Motherland

Anthology of the Plot

Pank

My Father the Banker

The Little Comrade

Paradise '89

Roots

Animus Animals

Summer Survivors

Spoon

Jacob, Mimmi, and the Talking Dogs

Take It or Leave It

Liv Ullmann: A Celebration

WED-11-13-2019 THROUGH FRI-12-13-2019

The Wayward Girl: Evening with Liv Ullmann

Miss Julie: Evening with Liv Ullmann

An-Magrit

The Emigrants /Utvandrama

The New Land /Nybyggarna

Scenes from a Marriage /Scener ur ett äktenskap

Zandy's Bride

The Abdication

Kristin Lavransdatter

Faithless /Trolösa

Nordic & Baltic Oscar Contenders

THU-12-5-2019 THROUGH THU-2-13-2020

Out Stealing Horses/Ut og stjæle hester

And Then We Danced

Stupid Young Heart/Hölmö nuori sydän

Queen of Hearts/Dronningen

The Mover/Tevs nakts

A White, White Day/Hvitur, hvitur dagur

Bridges of Time/Laiko tiltai



—OUT STEALING HORSES—PHOTO BY LUKAS SALNA



—THE PAINTER AND THE THIEF—IMAGE COURTESY NEON

New Nordic Cinema: Female-Focused

FRI-3-06-2020 THROUGH FRI-03-13-20

Britt-Marie Was Here/Britt-Marie var här
Aurora

The Painter & The Thief—Virtual Screening

FRI-5-22-2020 THROUGH SUN-6-28-2020

Virtual Film Talk with Benjamin Ree & Barbora Kysilkova

The Teachers' Protest—Virtual Screening

FRI-7-10-2020 THROUGH THU-7-23-2020

Virtual Film Talk with Jon Seal & Erik Brakstad

Out Stealing Horses—Virtual Screening

FRI-8-7-2020 THROUGH SUN-1-31-2021

Virtual Film Talk with Hans Petter Moland & Liam Neeson



—THE ARTIST'S WIFE

Army of Lovers: In the Holy Land—Virtual Screening

FRI-9-11-2020 THROUGH TUE-11-03-2020

The Artist's Wife—Virtual Screening

FRI-9-25-2020

Virtual Film Talk with Lena Olin & Tom Dolby

The Blinding Sea—Virtual Screening

TUE-10-13-2020

Virtual Film Talk with George Tombs

The New York Baltic Virtual Film Festival

THU-10-14-2020 THROUGH SUN-11-15-2020

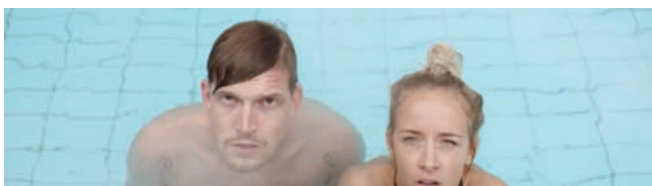
Chasing Unicorns

Virtual film Talk with Rain Rannu

Nearby

Virtual Film Talk with Jüle Rozite and director Alise Zarina

The Castle | Virtual Film Talk with Lina Lûzyte



—CHASING UNICORNS



—PRETENDERS

Pretenders

Foam at the Mouth

Invisible

Virtual Film Panel with Vallo Toomla, Jānis Nords, & Ignas Jonynas

Truth and Justice

Virtual Film Talk with Tanel Toom

Oleg | Virtual Film Talk with Juris Kursietis & Valentin

Novopolskij

The Lawyer

Virtual Film Talk with Romas Zabarauskas

Third Annual Sámi Virtual Film Festival

THU-11-5-2020 THROUGH SAT-11-8-2020

Kaisa's Enchanted Forest

Pulling in the Belt / Ribadit

Liššá

Áile and Grandmother

Giitu

A Home Truth

Garjá

Spring 2020 / Vår2020

Virtual Panel Discussion with Rebecca King, Elle Sofe Sara, Silja Somby, & Dr. Troy Storfjell

Taste of Iceland: Woman at War Virtual Screening

WED-11-18-2020 & SUN-11-22-2020

Virtual Film Talk with Benedikt Erlingsson

Nordic & Baltic Oscar Contenders Virtual Screenings

THU-1-7-2021 THROUGH SUN-1-24-2021

Agnes Joy

Virtual Film Panel with Silja Hauksdóttir, Katla M. Þorgeirsdóttir & Donna Cruz

Another Round / Druk

Virtual Film Talk with Thomas Vinterberg

Blizzard of Souls/Dvēselu putenis

The Last Ones

My Dear Corpses/Mu kallid laibad

Virtual Film Talk with German Golub



—ANOTHER ROUND—PHOTO BY HENRIK OHSTEN

SCANDINAVIA HOUSE PROGRAMS CONTINUED



—TOVE

Nordic & Baltic Oscar Contenders Virtual Screenings (cont.)

Charter

Virtual Film Talk with Amanda Kernell & Ana Dahl Torp

Hope /Håb

Virtual Film Panel with Maria Sødal, Stellan Skarsgard & Andrea Braein Hovig

Nova Lituania

Virtual Film Talk with Karolis Kaupinis

Tove

Virtual Film Talk with Zaida Bergroth & Alma Pöysti

Njuokčamat/The Tongues

Virtual Film Talk with Marja Bål Nango & Ingir Bål Nango

The Kicksled Choir/Sparkekoret

Virtual Film Panel with Julia Andersen, Torfinn Iverson, & Benoni Brox Krane

My Favorite War

Virtual Film Talk with Ilze Burkovska-Jacobsen & Hsiang Chin Moe

Life After Death

Virtual Film Talk with Klaus Härö

We Carry It Within Us—Virtual Screening

TUE-1-12-2021 THROUGH SUN-1-24-2021

Jonas Mekas: Filming Independence —Lithuania and the Collapse of the USSR

Virtual Roundtable Discussion

WED-1-13-2021

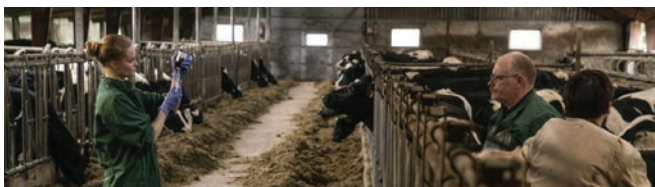
New Nordic Virtual Cinema

FRI-2-12-2021 THROUGH THU-5-13-2021

The Deposit/Tryggð

Gods of Molenbeek/Aatos ja amine

Phoenix/Føniks



—UNCLE—PHOTO BY FRELLE PETERSEN



—AALTO

Transnistria

Maria's Paradise/Marian paratiisi

The Reformist-A Female Iman/Reformisten

Uncle/Onkle

Force of Habit/Tottumiskysymys

Virtual Film Talk with Reeta Aalto & Alli Haapsalo

Echo/Bergmál

Beware of Children

Aalto

Virtual Film Talk with Virpi Suutari & Peter Reed

Fred Jüssi: The Beauty of Being

Virtual Film Talk with Fred Jüssi with Jaan Tootsen &

David Rothenberg

Games People Play /Seurapeli

Diana's Wedding

Run Uje Run



—THE GOOD TRAITOR

The Making of a Man—Virtual Cinema

MON-3-1-2021 THROUGH SUN 3-14-2021

The Good Traitor/ Vores Mand I Amerika—Virtual Cinema

THU-3-18-2021 THROUGH SUN-3-21-2021

Virtual Film Talk with Christine Rosendahl & Ulrich

Thomsen

The County/ Héraðið—Virtual Screening

THU-4-15-2021 THROUGH SUN-4-18-2021

Summer of Suspense Virtual Cinema

THU-6-3-2021 THROUGH THU 8-5-2021

Follow the Money

The Bridge

The Killing



—FOLLOW THE MONEY—IMAGE COURTESY TOPIX

MUSIC & PERFORMING ARTS

Music programs presented by ASF at Scandinavia House are intended to present a wide variety of performers and genres to a New York audience. Concerts take place in Victor Borge Hall, named in honor of the legendary Danish entertainer.. Programs regularly include classical, chamber, and operatic performances, along with presentations of contemporary works and a regular summer jazz series. Performers include regulars at Scandinavia House such as Swedish pianist Per Tengstrand, as well as a number of visiting performers from the Nordic countries, and Fellows who are in the U.S. studying music with support from the ASF.



—SIGMAR MATTHÍASSON'S ÁRÓRA—PHOTO BY LORI FREDRICKSON/ASF

Nordic Summer Jazz

THU-6-20-2019 THROUGH THU-7-11-2019

Sigmar Matthíasson's Áróra

Mikkel Ploug Trio

Kari Ikonen Trio

Thomas Backman

Jostein Gulbrandsen Trio

Mads Tolling & Jacob Fischer: A Tribute to Svend Asmussen

TUE-9-17-2019

Mari Boine

WED-10-2-2019

And Nobody Gets Everything Right with The Rhythm Method

TUE-10-22-2019

Sæunn Thorsteinsdóttir's Vernacular

THU-10-24-2019

Shapes & Icons: Finnish Music for Accordion with Matti Pulkki

TUE-11-12-2019



—SÆUNN THORSTEINSDÓTTIR—PHOTO BY LORI FREDRICKSON/ASF



—HOLIDAY PARTY AT SCANDINAVIA HOUSE—PHOTO BY LORIE FREDRICKSON/ASF

Holiday Concert

SUN-12-15-2019

With the Swedish Church Choir in New York

Music on Park Avenue with Per Tengstrand | 2019-2020

10-17, 11-2, 11-21-2019, & 01-16, 2-27-2020

Rhapsody in Blue

The Goldberg Variations

Rachmaninoff's Second Concerto

A Beethoven Celebration

The Grieg Concerto



—MUSIC ON PARK AVENUE—PHOTO COURTESY PER TENGSTRAND

Keyboard Conversations® with Jeffery Siegel | 2019-2020

THU-9-26-2019 & 1-23-2020

Mozart & Haydn: Humor and Heartache

Warm Romantic Music from the Far Cold North

Lucky & Dance or Die Performance and Film Screening with Charlotta Öfverholm

SAT-10-5-2019

Kinder K Reading with Scandinavian American Theatre Company

SAT-10-19-2019

The Kegelstatt Trio

THU-3-05-2020

Virtual Music on Park Avenue with Per Tengstrand

Interview & Video Performance with Opus 21

SUN-5-17-2020



—THE KEGELSTATT TRIO

SCANDINAVIA HOUSE PROGRAMS CONTINUED

Nordic Summer Jazz—Virtual Series

SAT-06-20-2020 THROUGH FRI-06-26-2020

Nikolaj Hess Trio

Sigge Egg

Verner Pohjola

Ingi Bjarni Quartet

Håkon Kornstad Trio

Isabella Lundgren

Nordic Summer Jazz Series

THU-06-24-2021, 07-15-2021, 07-29-2021

Eepi Ursin Duo

Jostein Gulbrandsen Trio

Oskar Stenmark



—JOSTEIN GULBRANDSEN TRIO—PHOTO BY TAYLOR ROGERS/ASF

LECTURES & LITERARY

Lectures and literary events at Scandinavia House continue to bring audiences together to explore and discuss a wide range of subjects and issues. Book talks feature works by contemporary and classical authors, and on subjects including contemporary fiction to the arts and public affairs. Lectures are also presented in conjunction with major exhibitions. During the pandemic closure, programs were held remotely using Zoom, with videos later made available which remain available to stream on our YouTube page and website.

Nordic Book Club at Scandinavia House | 2019-2020

TUE-7-30-19 THROUGH TUE-2-25-20

A Change of Heart by Sofia Lundberg

The Red Address Book by Johannes Anyuru

Clearing Out by Helene Uri

Hotel Silence by Auður Ava Ólafsdóttir

Things That Fall From the Sky by Selja Ahava

The Summer of Ellen by Agnete Friis

Norway Celebration at the Frankfurt Book Fair

TUE-9-10-2019



—NORWAY'S PENAL REFORM: STEVEN PERI, JORDAN HYATT, COLETTE PETERS, KIM EKHAUGEN—PHOTO BY LORI FREDRICKSON/ASF

The Nordic Model: Norway's Penal Reform

Lecture with Kim Ekhaugen, Colette Peters, & Jordan Hyatt

WED-9-18-2019

Into the White: The Renaissance Arctic & the End of the Image

Book Talk with Christopher P. Heuer

SAT-9-21-2019

The Secret WWII Concentration Camp Diary of Odd Nansen

Book Talk with Timothy Boyce

TUE-10-15-2019

The Ice at the End of the World

Book Talk with Jon Gertner

WED-10-16-2019



—JAY GERTNER

Swede Hollow

Book Talk with Ola Larsmo

SAT-10-19-2019

Professor Andersen's Night

Book Talk with Dag Solstad

MON-11-18-2019

The Nordic Model: Sweden's Welfare System & The Future of Work

Lecture with David Crouch, Sarita Gupta, Lena Sallgren, & Elizabeth Walentin

WED-11-20-2019



—SWEDEN'S WELFARE SYSTEM: DAVID CROUCH, SARITA GUPTA, LENA SALLGREN, ELIZABETH WALENTIN—PHOTO BY LORI FREDRICKSON/ASF



—TOM SYRING—PHOTO COURTESY TOM SYRING

Jón Leifs and the Musical Invention of Iceland

Book Talk with Árni Heimir Ingólfsson

TUE-12-3-2019

The Danish Avant-Garde and World War II: The Helhesten Collective

Book Talk with Kerry Greaves

TUE-1-7-2020

The Rule of Law and Forced Migration

ASF Visiting Lecture with Tom Syring

WED-2-12-2020

Iceland's Response to Coronavirus

Virtual Conversation with Dr. Gudrun Aspelund

THU-4-23-2020

A Fist or Heart

Virtual Book Talk with Krístín Eiríksdóttir & Larissa Kyzer

TUE-5-5-2020



—LARS TRÄGÅRDH; AERIAL VIEW OF STOCKHOLM—PHOTO BY OLA ERICSON

Sweden's Response to the Coronavirus

Virtual Conversations with Lars Trägårdh

THU-5-7-2020, 9-23-2020, 6-16-2021

Online Nordic Book Club | 2020-2021

TUE-5-12-2020 THROUGH TUE-6-8-2021

A Fist or Heart by Kristin Eiríksdóttir

They Will Drown in their Mothers' Tears by Johannes Anyuru

Professor Andersen's Night by Dag Solstad

The Colonel's Wife by Rosa Liksom

The Island by Ragnar Jónasson

Book of Eels by Patrik Svensson

The Courier by Kjell Ola Dahl

When Death Takes Something You Give it Back by Naja Marie Aidt

The Summer House by Philip Teir

Miss Iceland by Auður Ava Ólafsdóttir

The Family Clause by Jonas Hassen Khemiri

The Bell in the Lake by Lars Mytting

Palm Beach Finland by Antti Tuomainen

Companions by Christina Hesselholdt

The Brahmaddells by Jóanes Nielsen

A Drop of Midnight by Jason Diiakité

The Women I Think About at Night by Mia Kankimäki

The Copenhagen Trilogy by Tove Ditlevsen

Anxious People by Frederik Backman

On Time and Water by Andri Snær Magnason



—LGBTQ FILMMAKING: CARSTEN SPARWATH; ISOLD UGGADÓTTIR (PHOTO BY THORDIS CLAESSEN); ALLT VI DELAR; MARJA BÅL NANGO; MIKKO MAKELA; NICK MCCARTHY

Museums from Home

Virtual Book Talk with Kendra Greene

MON-5-18-2020

Norway's Reponse to Coronavirus

Virtual Conversation with Dr. Frode Forland

THU-5-21-2020

Refugees and the Coronavirus

Curtis L. Carlson Distinguished Lecture with Jan Egeland

TUE-6-16-2020

LGBTQ Filmmaking in the Nordic Countries

Virtual Panel with Carsten Sparwath, Isold Uggadóttir, Allt

Vi Delar, Marja Bål Nango, Mikko Makela, Nick McCarthy

TUE-6-30-2020

The Teachers' Protest

Virtual Discussion with Jon Seal and Erik Brakstad

SAT-7-18-2020

The Family Clause

Virtual Book Talk with Jonas Hassen Khemiri

WED-9-9-2020

Equity, Inclusion and Immigration in Nordic Countries

Virtual Panel with Jason "Timbuktu" Diakité, Jonas

Hassen Khemiri, Marcus Samuelsson, Jason Pasternak

TUE-9-15-2020



—EQUITY PANEL: JASON "TIMBUKTU" DIAKITÉ (PHOTO BY THERESE ÖHRVALL); JONAS HASSEN KHEMIRI (PHOTO BY PIERRE BJÖRK); MARCUS SAMUELSSON; JASON PASTERNAK

SCANDINAVIA HOUSE PROGRAMS CONTINUED

Danish Authors You Should Know

Virtual Panel with Shadi Angelina Bazeghi, Jonas Eika, Katrine Øgaard Jensen, Maja Lee Langvad, Dorthe Nors, Ursula Andkjær Olsen

TUE-9-29-2020

The Bell in the Lake

Virtual Book Talk with Lars Mytting

THU-10-1-2020

Icelandic Authors You Should Know

Virtual Panel with The Imposter Poets

TUE-10-6-2020

Dispatches From the End of Ice: Essays

Virtual Book Talk with Beth Peterson & Sally Yerkovich

WED-10-7-2020



—VANESSA BARKER, KIMMON HIMBERG, LARS HOLMBERG, MARGRÉT VALDIMARSDÓTTIR

Policing & Police Reform in the Nordic Countries

Virtual Panel with Vanessa Barker, Dr. Kimmo Himberg, Lars Holmberg, Dr. Margrét Valdimarsdóttir

WED-10-7-2020

Finnish Authors You Should Know

Virtual Panel with Selja Ahava, Rosa Liksom, Johanna Sinisalo, and Antti Tuomainen, Lola Rogers

TUE-10-13-2020

Faroese Authors You Should Know

Virtual Panel with Rakel Helmsdal, Carl Jóhan Jensen, Marjun Syderbø Kjælnes, Kerri Pierce

TUE-10-20-2020



—RAKEL HELMSDAL, CARL JÓHAN JENSEN, MARJUN SYDERBØ KJÆLNES, KERRI PIERCE



—HARALD GASKI, NIILLAS HOLMBERG, JOHANNA DOMOKOS

Norwegian Authors You Should Know

Virtual Panel with Jan Grue, Roy Jacobsen, Kaja Kvernbakken, and Ruth Lillegraven

TUE-10-27-2020

Sámi Authors You Should Know

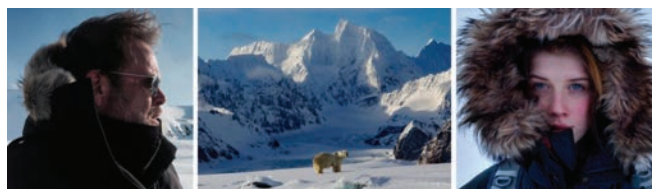
Virtual Panel with Johanna Domokos, Niillas Holmberg, & Harald Gaski

TUE-11-3-2020

Swedish Authors You Should Know

Virtual Panel with Athena Farrokhzad, Johannes Heldén, Mara Lee, Carolina Setterwall, Elizabeth Clark Wessel

TUE-11-10-2020



—FREDRIK GRANATH, POLAR TALES COVER IMAGE (PHOTOS BY MELISSA SCHÄFER), MELISSA SCHÄFER (PHOTO BY FREDRIK GRANATH)

Polar Tales

Virtual Book Talk with Melissa Schäfer & Fredrik Granath

SAT-11-21-2021

The Women I Think About at Night

Virtual Book Talk with Mia Kankimäki & Heli Serviö

TUE-1-7-2021

Race in the Colonial Past & Present

Virtual Discussion with LaVaughn Belle & Jeanette Ehlers

TUE-1-12-2021

Race, Identity, & Belonging in the Nordic Countries

Virtual Panel with Elizabeth Löwe Hunter, Jasmine Kelekay, Susani Mahadura, Ethelene Whitmire

THU-1-21-2021



—MIA KANKIMÄKI (COURTESY TOMMI TUOMI), HELI SIRVIÖ



—THE COPENHAGEN TRILOGY (JACKET COURTESY FSG), MICHAEL FAVALA GOLDMAN, MORTEN HØI JENSEN, RACHEL KUSHNER (PHOTO BY CHLOE AFTEL)

The Copenhagen Trilogy by Tove Ditlevsen

Virtual Panel with Michael Favala Goldman, Morten Høi Jensen, Rachel Kushner

TUE-1-26-2021

The Memory Theatre

Virtual Book Talk with Karin Tidbeck & Sara Lefkowitz

TUE-2-16-2021

Radical Nationalism & The Politics of Nostalgia

Virtual Panel with Dean Krouk, Tobias Hübinette, Catrin Lundström, Benjamin R. Teitelbaum

THU-2-18-2021

Louis Kahn 120 Celebration

Virtual Panel with Harriet Pattison, Nathaniel Kahn, & William Whitaker

SAT-2-20-2021



—DEAN KROUK, TOBIAS HÜBINETTE, CATRIN LUNDSTRÖM, BENJAMIN R. TEITELBAUM

A Silenced Voice: The Life of Journalist Kim Wall

Virtual Book Talk with Ingrid & Joachim Wall

THU-2-25-2021

Masculinity & Culture: The Making of a Man

Virtual Discussion with Lo Dagerman & Mark Greene

TUE-3-9-2021

Capturing Sustainability in the Arctic

Virtual Panel with Marion Belanger, Clare Benson, Marek Ranis, Andri Snær Magnason, Tim Frandy

WED-3-24-2021



—CLARE BENSON, MARION BELANGER, ANDRI SNÆR MAGNASON, MAREK RANIS



— LAURA LINDSTEDT, BOOK JACKET (COURTESY LIVERIGHT), DAVID HACKSTON

My Friend Natalia

Virtual Book Talk with Laura Lindstedt & David Hackston

SAT-4-10-2021

Big Heart, Strong Hands

Virtual Book Talk with Anne Helene Gjelstad & Erika Larsen

SAT-4-17-2021

Indigenous Activism in the Nordic Countries

Virtual Panel with Sofia Jannok, Qivioq Nivi Løvstrøm, Beaska Niilas, Victoria Qutuq Buschman

WED-4-28-2021



— VICTORIA QUTUQ BUSCHMAN, SOFIA JANNOK, BEASKA NIILAS, QIVIOQ NIVI LØVSTRØM

Outgoing Vessel & Sense Violence

Virtual Poetry Reading & Discussion with Helena Boberg, Johannes Göransson, Katrine Øgaard Jensen, Ursula Andkjær Olsen, Paul Cunningham

THU-5-13-2021

The Employees

Virtual Book Talk with Olga Ravn & Martin Aitken

WED-5-26-2021

Stranger's Guide to Scandinavia

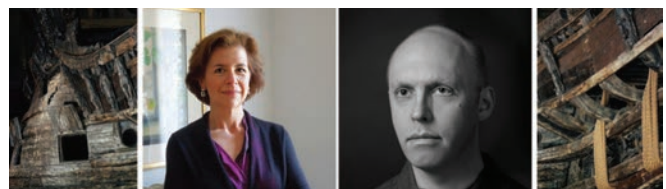
Virtual Panel with Andri Snær Magnason, Lytton Smith, Carl Johan Usti, Kira Brunner Don, Ethelene Whitmire

FRI-6-11-2021

Conversations with a Shipwreck: In Conversation with Adam Davies, Fred Hocker & Joan Wickersham

Virtual Discussion

FRI-6-18-2021



—ADAM DAVIES, STARBOARD (DETAIL, L-R); ADAM DAVIES; JOAN WICKERSHAM

SCANDINAVIA HOUSE PROGRAMS CONTINUED

KIDS & FAMILIES

Prior to the COVID pandemic, Scandinavia House featured regular programs for children and families, including weekly access to the Heimbold Family Children's Playing and Learning Center, a colorful, welcoming environment where children and their caregivers could learn about the history and culture of Scandinavia through books, toys, costumes, and workshops. Other children's programs celebrated Nordic heritage and culture through music, films, performances, and interactive workshops.

Since the COVID pandemic caused the Heimbold Family Children's Playing and Learning Center to close temporarily in March 2020, we have featured a wide range of children's programming suitable for all ages on the Scandinavia House YouTube channel. These programs included art workshops, musical singalongs, artist-run workshops, children's book author introductions and read alouds, and seasonal holiday craft activities.



—SHAPE STUDIO FOR TOTS—IMAGE BY HERTTA NILSSON/ASF

Cutting Edges Saturday Art Workshops **SAT-11-2-2019, 11-16-2019, & 11-30-2019**

Cutting Edges
Motion with Sari Nordman
Color with Studio Finna

Nordic Christmas **SAT-12-7-2019**

Saint Lucia Workshop **SAT-12-14-2019**

Shape Studio For Tots **SAT-1-11-2020, WED-7-22-2020**

Fastelavn Workshop **SAT-2-29-2020**

Design Learning: Virtual Workshop with Mari Savio **MON-6-15-2020**



—IDA'S TUNES—PHOTO BY LORI FREDRICKSON/ASF

A Virtual Midsummer Celebration **FRI-6-19-2020**

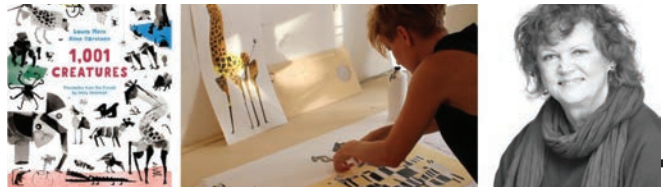
Ida's Tunes: Virtual Summer Special **THU-6-25-2020**

Troll Marionettes: Virtual Workshop with Marte Ekhougen **THU-7-9-2020**

Saturday Virtual Storytelling & Workshop: The Book About Moomin, Mymble, and Little My **SAT-8-22-2020**

Nordic Cooking with Zucchini & Squash: Virtual Program with Morten Sohlberg **THU-9-10-2020**

1,001 Creatures: Virtual Storytelling & Workshop with Laura Merz & Aino Järvinen **THU-9-24-2020**



—1,001 CREATURES; AINO JÄRVINEN, LAURA MERZ

Monster Party: Virtual Workshop with Satu Kettunen **SAT-10-31-2020**

Paws & Edward: Virtual Storytelling & Interview with Espen Dekko & Mari Kanstad Johnsen **SAT-11-7-2020**

Virtual Play Reading: Pippi Longstocking with SATC **SAT-11-28-2020**

Nordic Holiday Crafts: Virtual Workshops **WED-12-9-2020, 12-16-2020, & 12-23-2020**

Danish Woven Hearts
Yarn Tomte
Julgranskarameller



—YARN TOMTAR—IMAGE BY HERTTA NILSSON/ASF



—INGRID KULLBERG-BENDZ, ST. LUCI PROCESSION (PHOTO BY LORI FREDRICKSON/ASF)

Virtual St. Lucia Celebration with Ingrid Kullberg-Bendz
SUN-12-13-2020

Nordic Holiday Cooking & Glögg with Morten Sohlberg & Ulrika Bengtsson
SAT-12-19-2020

Virtual Workshop & Studio Visit with Marika Maijala
SAT-2-6-2021

Virtual Workshop: Winter Wonderland Snow Art
SAT-2-13-2021



—WINTER WONDERLAND SNOW ART WORKSHOP—PHOTO BY HERTTA NILSSON/ASF

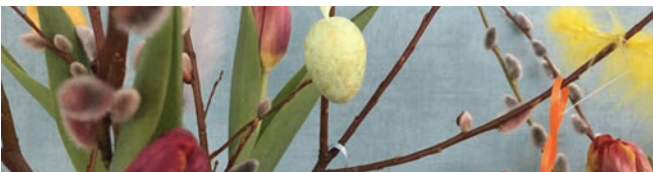
Virtual Workshop & Studio Visit with Tero Kuitunen
SAT-2-27-2021

Virtual Workshop & Storytime: The Fox and the Bear
with Elina Gyldén
SAT-3-20-2021

Virtual Easter Crafts & Celebration
THU-4-1-2021

The Fairytale World of Elsa Beskow: Virtual Workshop
with Ingrid Kullberg-Bendz
SAT-5-1-2021

Rain-Virtual Studio Visit & Read Aloud with Anders Holmer
SAT-5-15-2021



—VIRTUAL EASTER CRAFTS—PHOTO BY HERTTA NILSSON/ASF

SCANDINAVIA HOUSE PROGRAM FUNDS

The following funds, held by the ASF on a long-term basis, provide support for Scandinavia House programs:

The Louise and Karl Andren Fund for Musical Performance • The Bonnier Family Fund for Contemporary Art • The Victor Borge Hall Endowment Fund • The Curtis L. Carlson Distinguished Lecture Series Fund • The Lynn Carter Fund • The Centennial/Second Century Fund • The Edith Coulter Fund • Dunard Fund USA • The Heimbold Family Children's Playing and Learning Center Fund • The Icelandic Cultural Fund • The F. Donald Kenney Fund for Visual Arts • The Elle Leppälä Kronquist from Kuru, Finland, and William Kronquist from Narpes, Finland, and Dr. Laura Kronquist Mesaros Memorial Endowment Fund • Asbjørn Lunde Fund in Memory of Karl and Elisa Lunde • The Norwegian Centennial Cultural Fund • The Nordic Investment Bank Fund • The Barbro Osher Pro Suecia Foundation Young Artists Performance Endowment Fund • The Philip W. Pfeifer III Fund • The Hilppa Roby Fund for Finnish Cultural and Educational Programs at Scandinava House

AWARDS & PRIZES



—ASF BIRGIT NILSSON PRIZEWINNER HYOYOUNG KIM—IMAGE COURTESY HYOYOUNG KIM

ASF GOLD MEDAL

The American-Scandinavian Foundation's highest honor, the Gold Medal recognizes the achievement of persons or institutions promoting the ideals set forth in the Foundation's mission. In 2019, the ASF Gold Medal was awarded to Liv Ullmann, the renowned actress, director, writer, and humanitarian. The award recognizes her extraordinary accomplishments in film and theater, as well as her passionate advocacy of women and children worldwide. Ms. Ullmann has served as an Executive Trustee of ASF since 2006.

AWARD FOR DISTINGUISHED PUBLIC SERVICE

The ASF Award for Distinguished Public Service honors individuals or organizations whose leadership in humanitarian or public service significantly fosters understanding and collaboration between the United States and the Nordic region. The most recent two awards as of this report include the 2018 Award for Distinguished Public Service presented to The LEGO Group, the Danish company whose products reflect the Scandinavian approach to learning through play, and 2019 Award for Distinguished Public Service honoring Ambassador Edward E. Elson. Mr. Elson served as U.S. Ambassador to Denmark from 1993-1998, as Executive Trustee of the ASF since 1999, and as ASF's Vice Chair for Denmark 2001-2017.

ASF NIELS POULSON AWARD

The Niels Poulson Award, named after the ASF's founder, honors the outstanding dedication and service of a Trustee of the Foundation as well as their support of the ASF's mission to encourage educational and cultural exchange between the U.S. and the Nordic region. In 2018, the ASF Niels Poulson Award was presented to Bård Bunaes, a dedicated Trustee since 1997, who has served in numerous capacities with talent and dedication including as Chairman 2006-2009, Treasurer 2012-2019, and Vice Chairman for Norway for many years.

BIRGIT NILSSON AWARD

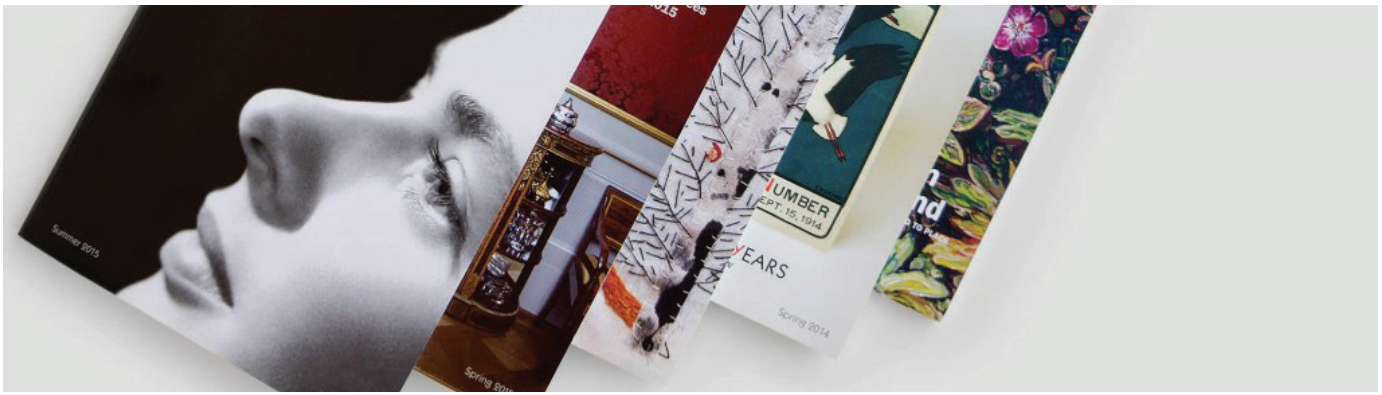
The Birgit Nilsson Award was established in 1988, the 350th anniversary of New Sweden, the first Swedish settlement in the U.S. The Award was endowed through proceeds of a concert honoring the world-renowned Swedish soprano Birgit Nilsson. It is awarded to a finalist in the Metropolitan Opera Auditions, one of the most prestigious competitions for young singers in the world. Alexandria Shiner was the 2020 recipient and Hyoyoung Kim was the 2021 recipient.

ASF TRANSLATION PRIZES

The ASF Translation Prizes are awarded regularly in the U.S. for English translations of Nordic literature. The awards recognize outstanding translation of prose or poetry by Nordic authors born after 1800. Established in 1980, the ASF has recognized, through this annual competition, exemplary work by more than 50 translators. In 2019, Larissa Kyzer (Brooklyn, NY) was awarded the Nadia Christensen Prize for her translation of an excerpt from *Elín, ýmislegt (A Fist or a Heart)* by Icelandic author Kristín Eiríksdóttir. In 2020, the recipients were Jennifer Russell and Sophia Hersi Smith (Copenhagen, Denmark) for their co-translation of *Alle Himlens Fugle (All the Birds in the Sky)* by Danish author Raket Haslund-Gjerrild.

The Leif and Inger Sjöberg Prize recognizes distinguished effort by a translator whose work has not previously been published. In 2019, the award was presented to Mie Mortensen (New York, NY) for her translation of *En pige og en dreng (A Girl and a Boy)* by Danish author Morten Brask (b. 1970). In 2020, Alexandra Glynn (Park Rapids, MN) was awarded the Prize for her translation of *Laulu (Hymns)* by Finnish author Anna-Mari Kaskinen.

In 2020, a third translation award, the Wigeland Prize, was granted to Olivia Lasky for her superb translation of the Norwegian author Sigbjørn Skåden's *Våke over dem som sover (Watch Over Those Who Sleep)*.



—ISSUES OF SCANDINAVIAN REVIEW—IMAGE COURTESY ASF

PUBLICATIONS SCANDINAVIAN REVIEW

ASF's flagship publication is *Scandinavian Review*, an illustrated journal that presents many aspects of life and culture in the Nordic countries, through articles on contemporary and historical issues as well as on new developments in the region. Published continuously since 1913, *Scandinavian Review* also presents excerpts from the winning entries in ASF's annual Translation Prize competition, and a New Nordic Book Tips section.

Summer 2019

This issue complemented an exhibition at Scandinavia House, *Cutting Edges: Nordic Concrete Art from the Erling Neby Collection*, with an essay by the curator and an interview with the collector, as well as many images from the show. Other articles focused on the work of Swedish landscape architect Thorbjörn Andersson, taxes in the Nordic countries and the benefits they provide, and the two tumultuous years following Finland's achievement of independence in 1917. It also presented an intriguing story about U.S. Secretary of State William Seward's interest in other territories such as the Danish Virgin Islands, Iceland, and Greenland after the 1867 purchase of Alaska.

Autumn 2019

The cover feature examined life on the unique Svalbard archipelago in the Arctic, officially part of Norway but governed under the 1920 international Treaty of Svalbard. The issue also looked at Mikael Agricola, considered the father of the Finnish language; Bakken in Denmark, the world's oldest amusement park; Swedish painter Anders Zorn's years traveling and painting in the United States; the bicentennial of the birth of Jenny Lind, soprano who was known as the Swedish Nightingale; and the fate of the S.S. Henry Bacon, a U.S. Merchant Marine ship that rescued 19 Norwegian

refugees during World War II. This was the final issue edited by Richard J. Litell, who retired after nearly 20 years at the helm of *Scandinavian Review*.

Spring/Summer 2020

This issue was dedicated to the Nordic Childhood. It examined ways in which the Nordic cultures and early educational systems create and preserve the concept of "the good childhood," reviewed Nordic design for children, and included a survey of influential Nordic children's books over the past 150 years. The issue also celebrated the 20th anniversary of the Heimbold Family Children's Playing and Learning Center at Scandinavia House. It was guest-edited by Max Friedman.

Autumn 2020

Another special issue this year focused on the 20th anniversary of Scandinavia House: The Nordic Center in America. It looked at the development of the center from the early ideas to its full flourishing and presented highlights of the broad range of cultural and educational programming presented since 2000: exhibitions, films, concerts/performing arts, lectures/panels/symposia, children's and family programs, and virtual Scandinavia House. The issue also included reflections on designing the building by principal architect James Stewart Polshek. This issue was guest-edited by Lynn Carter.

SCAN

The American-Scandinavian Foundation also publishes a quarterly newsletter, *SCAN*, which reports on ASF's activities and programs, along with news from the Nordic region and Scandinavian events throughout the United States.

ASF ANNUAL DONOR SUPPORT

The American-Scandinavian Foundation is grateful to the many individuals, corporations, and foundations that have generously contributed financial and in-kind support to the Foundation. These gifts ensure that the ASF will continue to promote international understanding through education and cultural exchange between the United States and the five Nordic nations.

2019-2020

This list of donors reflects gifts and pledges made to the Foundation during the fiscal year ending June 30, 2020.

PRESIDENT'S CIRCLE

\$100,000 and Above

Margaret A. Cargill Philanthropies
Hon. Charles A. and Mrs. Monika Heimbold / The Heimbold Foundation
Norway House Foundation
Liv Ullmann and Donald Saunders

\$50,000 and Above

The Barbro Osher Pro Suecia Foundation

Inger G. and William B. Ginsberg

Kristina Kittilsen and Steve Weller

Scandinavian Seminar

LEADERS

\$25,000 and Above

DNB Bank ASA - New York

The G. Unger Vetlesen Foundation

PATRONS

\$15,000 and Above

Trond S. Jensen

Maria and Matthias Ederer

Richard Reiss

Wallenius Lines Holding Inc.

SPONSORS

\$10,000 and Above

AIG

Sigríður Benediktsdóttir

Bjorg Bergsveinsdottir and Eggert Dagbjartsson

Danske Markets Inc.

Daphne L. Davidson and Thomas R. Schwartz

Equinor Pipelines LLC

Jens P Heyerdahl d.y.

Christopher G. Kelly

Lena Biörck Kaplan

Sigurdur O. Olafsson

Hon. Lyndon L. Olson Jr.

Nina Skage and Per Gunnar Strømberg Rasmussen

Stuart Family Foundation

Amb. Michael Wood and Judy Wood

BENEFACTORS

\$5,000 and Above

Charles K. Barbo

Barbara and Craig Barrett Foundation

Ingrid I. Bernhard

Anders C. H. Brag

The Bård and Barbara Bunaes Family Fund

Cathleen M. Cameron

The Raymond E. & Ellen F. Crane Foundation

Sven Anders Ekernäs

Bente Svensen Frantz

Terje Lande and Mary Zamore

Christina Lang Assael

Ragnar and Laureen Meyer-Knutsen

Diana Nelson and John Atwater

Nordic Culture Fund / Nordisk Kulturfond

Lise Strickler and Mark Gallogly

CONTRIBUTORS

\$1,000 and Above

Charles B. Anderson

Karl G. and Lousie B. André

D. Euan and Angelica Merete Baird

Carl S. Benson

Victor B. and Paula Borge

Lynn Carter

The Cobb Family Foundation

Alpo Franssila Crane

Janet and Jim Crowle

Inger McCabe Elliott

Hon. Edward E. and Mrs. Susie Elson

Yvonne Ericson Dryden

Erkko Etula

Michael A Feirstein

Aili Flint

Suzanne Frederick

Edward P. Gallagher

Magnús Gústafsson

Bruce N. Hadley Jr. and Inger E. Hadley

Hon. Charles S. Haight Jr.

Helena M. Hernmarck

The Hognander Foundation

Bengt R. Holmstrom

Niels Jacobsen

Janis J. Johnson

The Charles & Lucille King Family Foundation

Erna M. Kojic

Eugene and Barbara Kokot

Jette Jacobsen Lord

Øivind Lorentzen Jr.

Michael S. Mathews

Linda and Gerald Nordberg

Nordea Bank Abp, New York Branch

The Per and Astrid
Heidenreich Family
Foundation

Peri & Stewart LLC

Steven B. Peri

Yvonne Pollack

Dr. and Mrs. Kristján T.
Ragnarsson

Starr and Lennard
Rambusch

Sheila Johnson Robbins

Henrik Roos

Royal Norwegian
Consulate General in
New York

Marcus Siezing

Gunnar H Sigurgeirsson
and Rita Sunny-Yangs

Sara Sonne

Henrik M. Steffensen

Michael Steinfeld

Mr. and James M. Stewart

Bente L. Strong

SWEA/New Jersey

Inger M. Tallaksen

Joan Templeton

Helgi Tómasson

Rutger von Post

Inger K. Witter

SUPPORTERS

\$500 and Above

Gudrun Aspelund and
Gunnar Jakobsson

William Bernhard

Paul Bushkovitch

Lynn Carter

DeWitt Stern Group

Peter and Jenny Eio

Ingrid Nyeboe and Louise
Fishman

Goldman Sachs & Co.

Greater Kansas City
Foundation - Victor
Regnier Fund

Cami Green-Hofstadter

Jaakko J. Haikala

Anders Iversen

Barbara D. Knox

Kaarina Koskenalusta

Leena K. Langeland

Lois J. Levine

Lesley Matali

Betsy Durkin Matthes

Lance Nelson

Rose-Marie G. Oster

Elizabeth D. Pessala

Thorstenn & Thorstenn

IN KIND GIFTS

Chicago Importing
Company

Fiskars, Inc.

Flying Tiger Copenhagen

Magisso North America, Inc.

Mikkeller

Nøgne Ø

Norseland, Inc.

SAS, Scandinavian
Airlines

siggi's dairy

Svenska Kulturfonden/
The Swedish Cultural
Foundation in Finland

CORPORATE MEMBERS

Corporate Members
provide the critical
support that ASF needs
to continue our rich
legacy of providing
stimulating and diverse
programming for all ages.
We are extremely grateful
and wish to thank the
following corporations
for their generous and
ongoing support:

Corporate Patron

DNB Bank ASA

Corporate Sustainer

Danske Markets Inc.
Equinor

Corporate Friend

Nordea Bank AB

2020-21

*This list of donors re-
flects gifts and pledges
made to the Foundation
during the fiscal year
ending June 30, 2021.*

PRESIDENT'S CIRCLE

\$100,000 and Above

Margaret A. Cargill
Philanthropies

Inger G. and William B.
Ginsberg

The Barbro Osher Pro
Suecia Foundation

Hon. Charles A. and Mrs.
Monika Heimbald / The
Heimbald Foundation

\$50,000 and Above

Norway House
Foundation

Scandinavian Seminar

The G. Unger Vetlesen
Foundation

LEADERS

\$25,000 and Above

The Charles & Lucille
King Family Foundation

Kristina Kittilsen and
Steve Weller

Øivind Lorentzen III

PATRONS

\$15,000 and Above

Trond Sigurd Jensen

Ragnar Meyer-Knutsen

SKH Foundation

Ellen and Daniel Strickler

SPONSORS

\$10,000 and Above

Maria and Matthias
Ederer

Christopher
Danneskiold-Samsoe
Kann

Lizanne Kindler

Linda and Gerald
Nordberg

Nina Skage and Per
Gunnar Strømberg
Rasmussen

Agnes Ahlander Turner
and Jedediah Turner

BENEFACTORS**\$5,000 and Above**

Charles K. Barbo	Consulate General of Estonia	Diana L. Nelson and John Atwater	Louise Fishman and Ingrid Nyeboe
Ingrid I. Bernhard	Consulate General of Lithuania	Nordic Culture Fund / Nordisk Kulturfond	Aili Flint
Anders C. H. Brag	Janet and Jim Crowle	NORLA	Mason and Kim Granger
The Bård and Barbara Bunaes Family Fund	David E. R. Dangoor	Steven B. Peri Esq.	Magnús Gústafsson
The Raymond E. & Ellen F. Crane Foundation	Danish Arts Foundation	Yvonne Pollack	C. Flemming Heilmann
Daphne L. Davidson and Thomas R. Schwartz	Camille Jensen Douglas	Starr and Lennard Rambusch	J. W. Hulme Esq.
Equinor Natural Gas, LLC	Yvonne Ericson Dryden	Sheila Johnson Robbins	Anders Iversen
Sven Anders Ekernäs	The Embassy of Finland	Henrik Roos	Jennifer Johnson
Bente Svensen Frantz	The Embassy of Latvia	Royal Danish Consulate General in New York	Anne Kristina Kvile
Helena M. Hernmarck	Estonian Film Institute	Royal Norwegian Consulate General in New York	Leena Kaarina Langeland
Terje Lande and Mary Zamore	Erkko Etula	Fritz H. Schur	Evelyn Lorentzen Bell
The Mailman Foundation	Michael A. Feirstein	Mr. and Mrs. James M. Stewart	Nordic House in the Faroe Islands
Lise Strickler and Mark Gallogly	Suzanne Frederick	Marcus Siezing	Dr. and Mrs. Kristján T. Ragnarsson
Rutger von Post	Edward P. Gallagher	Henrik M. Steffensen	

CONTRIBUTORS**\$1,000 and Above**

AIG	Charles S. Haight Jr.
Karl G. Andrén	The Per and Astrid Heidenreich Family Foundation
Charles B. Anderson	The Hognander Foundation
D. Euan Baird	Iceland Naturally
Peter Baldwin	Janis J. Johnson
Carl S. Benson	Eugene and Barbara Kokot
Bjorg Bergsveinsdottir and Eggert Dagbjartsson	Kaarina Koskenalusta
Laufey Bustany	Christina Lang Assael
Cathleen M. Cameron	Pia Lindstrom
Lynn Carter	Lithuanian Foundation, Inc.
The Cobb Family Foundation	Jette Jacobsen Lord
	Michael S. Mathews
	National Film Center of Latvia
	National Film Center of Lithuania

SUPPORTERS**\$500 and Above**

American Latvian Association in the United States
Gudrun Aspelund and Gunnar Jakobsson
Patricia Berman
Lars W. Colliander
Alpo Franssila Crane
Peter and Jenny Eio

CORPORATE MEMBERS**Corporate Patron**

DNB Bank ASA, New York Branch

Corporate Sustainer

Danske Markets, Inc.
Equinor Pipelines, LLC.

Corporate Friend

Nordea Bank AB

MEMBERSHIP



—SCANDINAVIA HOUSE GALLERIES—IMAGE BY CHRISTINE BUTLER/ASF

ASF's Membership program offers individuals opportunities to discover the rich legacy of Scandinavian arts, culture, and thought, while providing vital financial support. The Foundation currently has over 4,000 members and supporters throughout the U.S. and around the world.

There are many great benefits offered to ASF members at all levels. Members receive yearly subscriptions to ASF's lively and informative journal, *Scandinavian Review*, as well as the membership newsletter, *SCAN*, and are invited to participate in special events and program opportunities throughout the year. Visitors in the greater New York area encouraged to visit Scandinavia House, where members at the Individual level and above receive free or reduced admission to films, lectures, concerts, and children's programs; discounts in the Shop and Smörgås Chef restaurant; and invitations to special member events such as exhibition previews, gallery tours, and the annual Holiday Party. Children's Center members have access to the Heimbold Family Children's Playing & Learning Center. Additionally, our Young Patron membership program has provided a calendar of special social events and cultural opportunities at Scandinavia House and throughout New York City.

ASF is grateful to its many members whose support helps make possible the Foundation's many educational and cultural programs. It offers special thanks to those members listed below whose category of membership (during the period covered by this report) was at the Sustainer level or above.

BENEFACTOR

Lars and Diana Bergquist
 Nelson Blitz Jr. and Catherine Woodard
 Bruce N. Hadley Jr. and Inger E. Hadley
 Terje Z. Lande and Mary Zamore
 George and Kerstin Trowbridge

PATRON

Thomas C.T. Brokaw
 Marianne Gerschel
 Henry P. Godfrey and Ginger Schnaper
 Christopher G. Kelly
 Lance and Marjorie Lindblom
 Janine Luke
 Diane R. Schneider
 Marcus Siezing
 Agnes Ahlander Turner and Jedediah H.K. Turner
 Inger K. Witter

SUSTAINER

Gudrun Aspelund
 Joaquin Badajoz
 Benjamin A. Bankson
 Karin J. Barkhorn, Esq.
 Carol and David Domina
 Suzanne Frederick
 Mason and Kim Granger
 Thomas Grischkowsky and Giovanni Trujillo
 Bonnie Haydon
 Elizabeth Leeds
 Maury Newburger
 Christina C. B. Staudt
 David van Buskirk
 Joan and Frederick Waring

FINANCIAL STATEMENTS



—SCANDINAVIA HOUSE—IMAGE BY LINDA HAGLUND/ASF

THE AMERICAN-SCANDINAVIAN FOUNDATION STATEMENT OF FINANCIAL POSITION 6-30-2020 & 6-30-2021

Assets	2020	2021
Cash & Cash Equivalents	873,055	1,220,746
Investments	40,891,793	32,650,361
Accounts Receivable	105,182	153,201
Receivables from King Street Capital L.P.	62,177	80,272
Contributions Receivable	350,000	750,000
Inventory	97,972	113,304
Prepaid Expenses	173,473	289,818
Property & Equipment	13,565,153	13,809,520
Total Assets	56,118,805	49,067,222
<hr/>		
Liabilities & Net Assets		
Liabilities:		
Accounts payable & accrued expenses	255,620	287,493
Deferred revenues	159,551	262,076
Grants payable	1,344,551	942,493
Total Liabilities	1,759,722	1,492,062
Net Assets without Donor Restrictions:		
Operating	1,521,822	645,429
Board designated	6,277,786	5,204,668
Plant fund	13,565,153	13,809,520
Total without Donor Restrictions:	21,364,761	19,659,617
Net Assets with Donor Restrictions:	32,994,322	27,915,543
Total Net Assets	54,359,083	47,575,160
Total Liabilities & Net Assets	56,118,805	49,067,222

The complete financial statements for the periods ended June 30, 2018 and June 30, 2019, as audited by Loeb & Troper, are available from ASF.

THE AMERICAN-SCANDINAVIAN FOUNDATION
STATEMENT OF ACTIVITIES
YEAR ENDED JUNE 30, 2021

	Unrestricted	With Donor Restrictions	Total 2021
Revenues:			
Contributions	1,062,182	514,338	1,576,520
Special events	23,000		23,000
<i>Less direct cost of special events</i>	(-) 23,000		23,000
Membership dues	142,410		142,410
Net investment return designated for current operations	508,320	1,261,617	1,769,937
Exchange program fees	1,200		1,200
Advertising and publishing	3,836		3,836
Ancillary service fees	22,187		22,187
Gift shop	27,875		90,409
<i>Less cost of goods sold</i>	(15332) 12,543		12,543
Program fees	46,392		46,392
Net assets released from restrictions	1,345,777		1,345,777
Total revenues, gains, & other support	3,121,838	430,178	3,552,016
Operating Expenses:			
Program services			
Training and fellowship programs	1,106,392		1,106,392
Membership	102,686		102,686
Public Programs	1,277,871		1,277,871
Publications	33,349		33,349
Total programs services	2,520,298		2,520,298
Supporting Services			
Management and general	502,085		502,085
Fundraising	143,118		143,118
Total supporting services	645,203		645,203
Total operating expenses	3,165,501		3,165,501
Operating income	43,663	430,178	386,515
Other income (expense):			
Net Investment return (loss) in excess of amounts designated for current operations	1,993,174	4,946,847	6,940,021
Contributions for long-term investment	-	10,185	10,185
Depreciation expense	(552,798)	-	(552,798)
Net assets released for property & equipment acquisition	308,431	308,431	-
Total other income (expense)	1,748,807	4,648,601	6,397,408
Change in net assets	1,705,144	5,078,779	6,783,923
Net assets - beginning of year	19,659,617	27,915,543	47,575,160
Net assets - end of year	21,364,761	32,994,322	54,359,083

STAFF



—ASF STAFF HOLIDAY DINNER 2017

Full time and office staff of the American-Scandinavian Foundation as of June 30, 2021

Edward P. Gallagher

President and Chief Executive Officer

Lynn Carter

Senior Advisor and Secretary to the Board

Jeff Clayborn

Director of Security and Fire Safety

Yvonne Ericson

Visitor Services Coordinator

Lori Fredrickson

Head of Communications, Marketing, & Digital

David Gonzalez

Building Superintendent

Monica Hidalgo

Program Associate, Educational Exchange and Special Projects

Nancy Lee

Office Manager

Julia Lipkowitz

Membership Coordinator

Victoria McGann

Scandinavia House Manager

Stephen McGrath

Director of Finance and Administration

Tatiana Pashman

Director of Internships & Training

Kyle Reinhart

Manager of Cultural and Educational Programs

Taylor Rogers

Communications & Digital Assistant

Elizabeth Scheel

Manager of Development and External Affairs

Emily Stoddart

Manager of Exhibitions and Community Programs

Janice Thaler

Bookkeeper

Laura Winterhalter

Manager of the Shop at Scandinavia House

Sally Yerkovich

Director of Educational Exchange and Special Projects

FACILITIES & SERVICES



—SMÖRGÅS CHEF

SMÖRGÅS CHEF

Smörgås Chef has managed the restaurant at Scandinavia House since September 2008 as one of its main New York City locations. Serving fine Scandinavian cuisine, Smörgås Chef offers lunch, dinner, and weekend brunch, along with special promotions related to ASF films and concerts. With an authentic custom-designed birch tree installation at its center and café tables and colorful chairs designed by Arne Jacobsen, Smörgås Chef provides diners with a vivid introduction to Nordic fare.



—VOLVO HALL

EVENT VENUE

While serving as a lively cultural center for Nordic programs presented by The American-Scandinavian Foundation, Scandinavia House is also a popular venue for events hosted by other nonprofits, government offices, corporations, and individuals. These include meetings, conferences, seminars, receptions, luncheons, dinners, film screenings, concerts, and weddings. The revenue generated by rentals provides important support for the operations of Scandinavia House and the ASF.

THE SHOP @ SCANDINAVIA HOUSE

The Shop @ Scandinavia House, one of New York's best sources of imported Nordic goods, introduces visitors to Scandinavian design and style. Showcasing modern designers from Scandinavia as well as established legends, The Shop offers distinctive home design and tableware, art glass, textiles, luxurious sweaters and accessories, unique jewelry, handmade clogs, and children's items, along with favorite Scandinavian foods and confections.



—THE SHOP @ SCANDINAVIA HOUSE

COOPERATING GROUPS



—STOCKHOLM CITY HALL—IMAGE BY WERNER NYSTRAND/COURTESY OF IMAGE BANK SWEDEN

COOPERATING INSTITUTIONS & OFFICES

ASF's cooperating offices in the Nordic countries provide invaluable assistance to and collaboration with ASF in a number of areas of educational exchange, primarily the Fellowships & Grants program. The Foundation acknowledges with gratitude its long-standing affiliation with these organizations.

The League of Finnish-American Societies

Suomi-Amerikka Yhdistysten Liitto
Eteläranta 6 A 8, 3. krs 00130 Helsinki, Finland
samsuomi.fi/apurahat

The Icelandic-American Society

Íslensk-ameríska félagið
PO Box 320, IS-121 Reykjavík, Iceland
www.iceam.is

The Norway-America Association

Norge-Amerika Foreningen
Rådhusgatan 23B, N-0158 Oslo 2, Norway
www.noram.no

Fulbright Sweden

Vasagatan 15-17, 4th Floor
11 20 Stockholm, Sweden
www.fulbright.se

ASSOCIATE GROUPS

ASF is affiliated with 11 independent regional groups across the U.S. These groups sponsor programs and activities for their local constituents, many of whom are also members of ASF: The American Scandinavian Society of New York - New York, NY • The American-Scandinavian Association of the National Capitol Area - Bethesda, MD • Scandinavian-American Foundation of Georgia - Alpharetta, GA • Scandinavian Club of Columbus - Columbus, OH • American-Scandinavian Association of Illinois, Chicago, IL • Northwest Iowa Associates of The American-Scandinavian Foundation - Storm Lake, IA • Central Iowa Associates of The American-Scandinavian Foundation - West Des Moines, IA • Twin Cities Associates of The American-Scandinavian Foundation - Northfield, MN • American-Scandinavian Association at Augustana College - Rock Island, IL • The Scandinavian-American Cultural and Historical Foundation - Thousand Oaks, CA • The American-Scandinavian Foundation of Santa Barbara - Santa Barbara CA



THE AMERICAN-SCANDINAVIAN FOUNDATION EXTENDS
ITS GRATITUDE TO THE FOLLOWING DONORS WHO HAVE
MADE POSSIBLE THE BUILDING OF SCANDINAVIA HOUSE

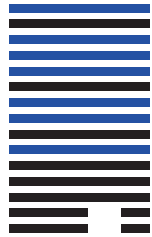
F. EDWARD KENNEY FOUNDATION

MARIE AND VICTOR BORG
EDGAR GUNDBERG GUNDBERG AND WILLIAM S. GUNDBERG
K. F. MULLEN AND CHRISTINE M. KINSEY MULLEN FOUNDATION
EDGAR
WILLIAM L. LIND

WILLIAM KENNETH STEINBERG AND CHRISTINE S. STEINBERG
THE BORG FOUNDATION



**AMERICAN-
SCANDINAVIAN
FOUNDATION**



**SCANDINAVIA
HOUSE**