

Project 2

Materials Challenge Evaluation

“Townhome infused with English charm” by

Linden Leaf Interiors

Lindsey Abdalla

Materials 1130

Contents

- | | | | |
|------------------------------------------------------|-------------------------------------------------------|------------------------------------------------------------------|------------------------------------------|
| 1. Title Slide | 13. Kitchen Paint: Borrowed Light | Lisbon Decorative | 31. Master Bedroom Paint: Studio Green |
| 2. Contents | 14. Kitchen Paint: Ultra Marine Blue | 23. Dining Room Board | 32. Master Bedroom Wallcovering: Brocade |
| 3. Backstory | 15. Kitchen Flooring: LVT Countryside Oak | 24. Dining Room Wallcovering: Silvergate | 33. Resources |
| 4. Design Statement | 16. Kitchen Counter: Havergate | 25. Dining Room Paint: Dayroom Yellow | |
| 5. Design Concept | 17. Bathroom Board | 26. Dining Room Window Fixture Fabric: Epicur Linen Velvet Honey | |
| 6. Materials Board | 18. Bathroom Wallcovering: Hegemone | 27. Dining Room Window Fixture Trim: Rouche S0350 Sweetheart Ros | |
| 7. Living Room Board | 19. Bathroom Paint: Slipper Satin | 28. Master Bedroom Board | |
| 8. Living Room Paint: Farrow's Cream | 20. Bathroom Floor Tile: Spanish Cotto | 29. Master Bedroom Area Rug: Portuguese Needlepoint | |
| 9. Living Room Paint: Mahogany | 21. Bathroom Wall/Floor Tile: Rue Pierre Gris Antique | 30. Master Bedroom Paint: Calamine | |
| 10. Living Room Window Fabric: Stud Blossom | 22. Bathroom Decorative Tile: | | |
| 11. Living Room Upholstery Fabric: Biron Strie Check | | | |
| 12. Kitchen Board | | | |

Backstory

Mary and John Stafford own a townhouse in Buckhead, GA. Both work in the film industry as producers for history documentaries. The past several years, the Staffords have worked on projects revolving around the United Kingdom, specifically Great Britain. The couple has fallen in love with the English style and has contacted Linden Leaf Interiors to help fulfill their needs. The Staffords want to infuse the home with English charm to emphasize furniture and souvenirs they have collected from Britain while abroad.



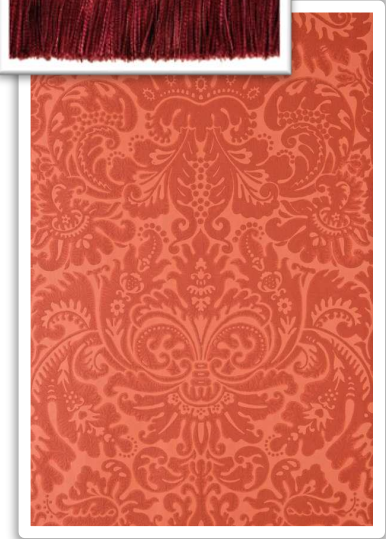
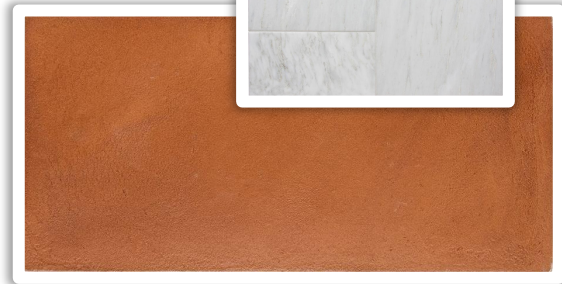
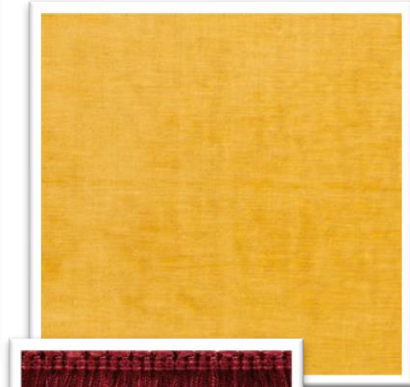
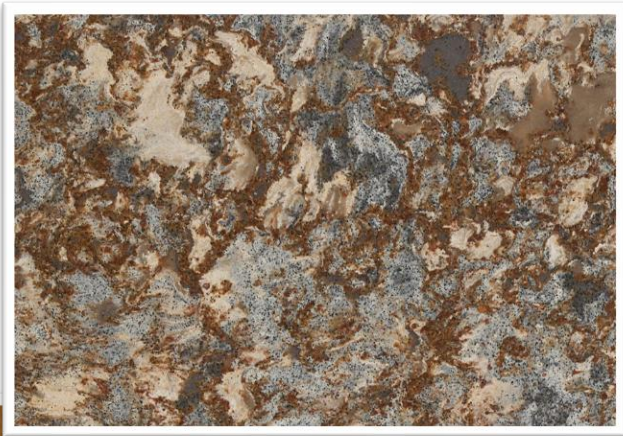
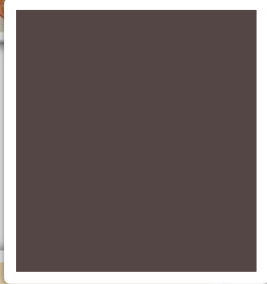
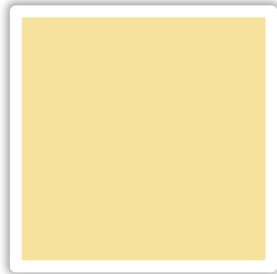
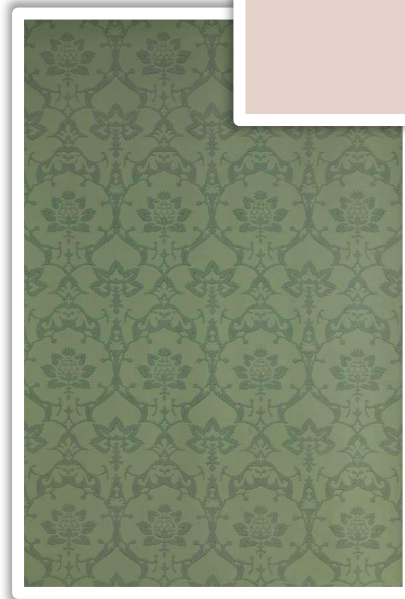
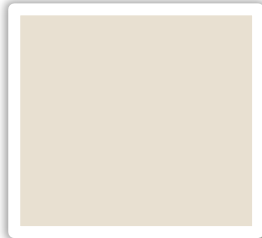
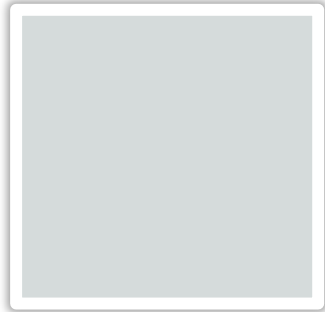
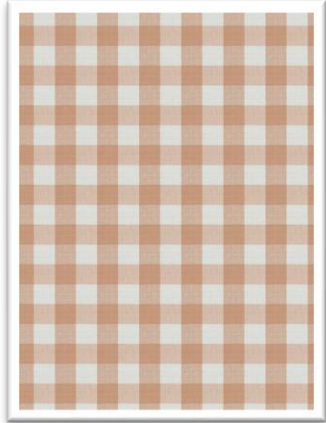
Design Statement

The Mary and John Stafford, two Anglophiles who spend as much time in Britain as the United States, wish to bring the charm of English design to their own townhome in Atlanta, Georgia.

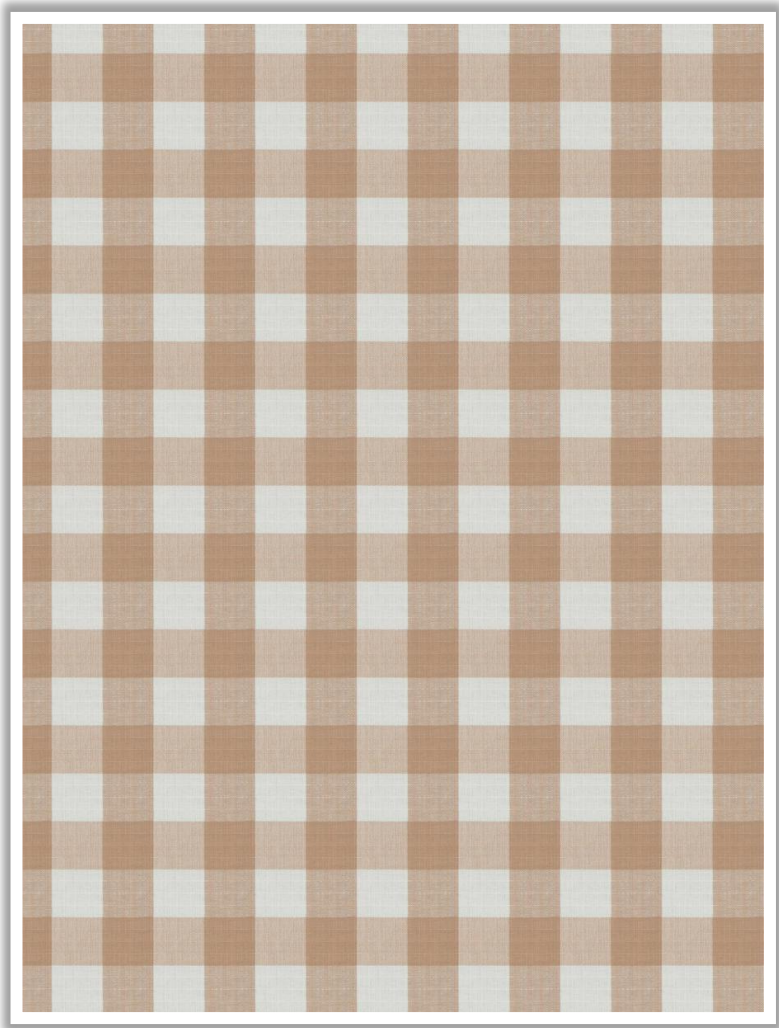
Design Concept

The redesign of the Stafford's townhome by Linden Leaf Interiors will focus on emphasizing the traditional English pieces the couple currently own while also incorporating English styles in other parts of the house. The townhome will take inspiration from English cottage style as well as English castles and palaces. By incorporating colors, patterns, and other materials common in English interior design, the home will reflect the charm of the English home room by room.

The Stafford's Townhome



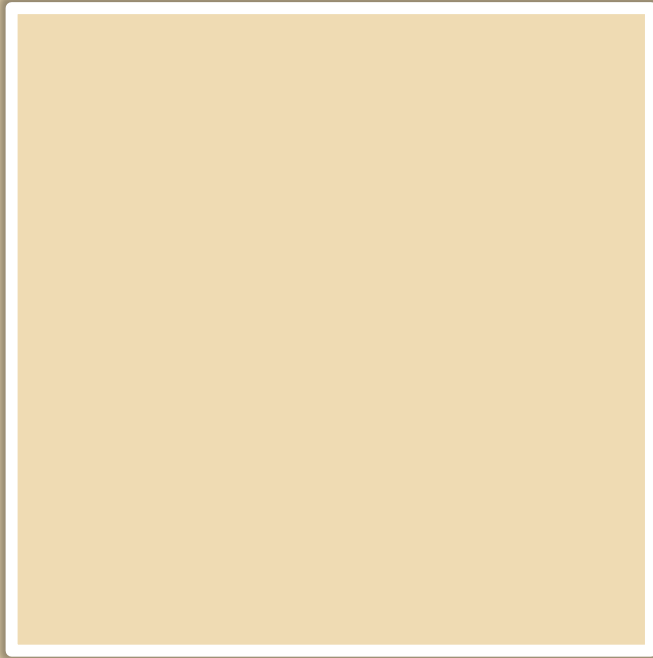
Living Room



Paint

Farrow's Cream No. 67

- Farrow and Ball



We chose *Farrow's Cream* for the main wall color in the living room to provide a light, warm and inviting color to the home reminiscent of the English cottage style.

We also recommend reusing the color in the kitchen as a ceiling color. It keeps consistency within the English cottage style we want to portray and also gives a soft warmth instead of a harsh white above the space.

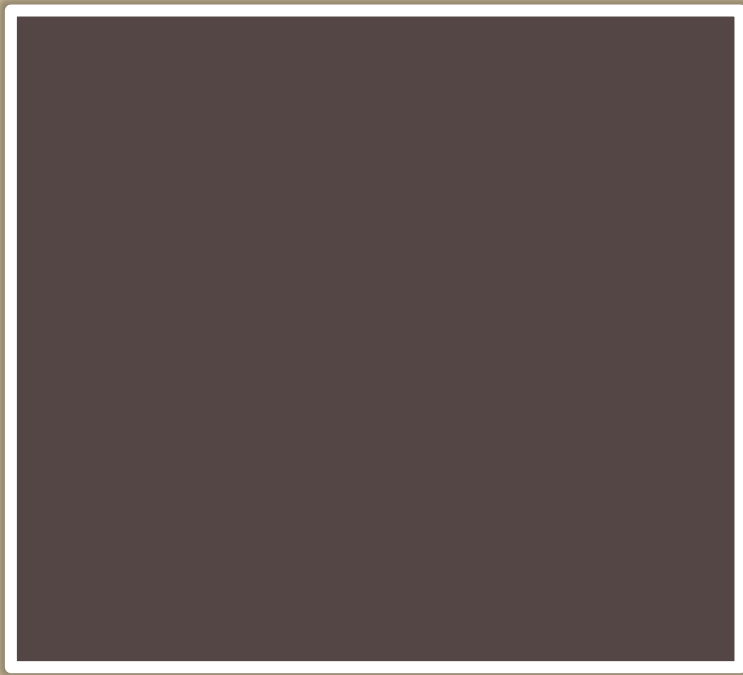
Mahogany No. 36 – Farrow & Ball

Linden Leaf Interiors

Paint

Mahogany No. 36

- Farrow and Ball



We chose *Mahogany* for the trim and decorative beam structures to also mimic the English cottage and Tudor style. This color will also repeat the trim and the beams added to the kitchen for a coherent transition between the two rooms.

Window Fixture Fabric

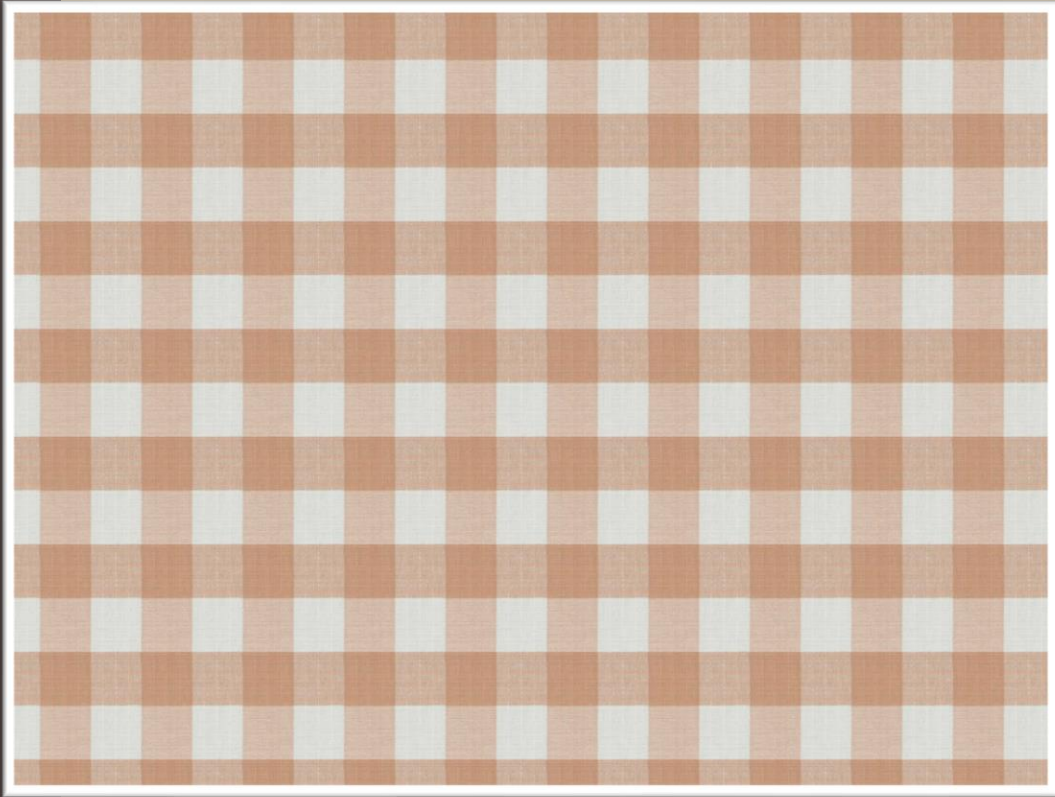


Stud Blossom: Coral Garden

- Brand: Fabricut
- Materials: 55% Linen, 45% Rayon

This fabric was chosen due to the density of the fabric – it is perfect for curtains – and the floral pattern. English country interiors frequently feature floral patterns.

Fabric: Upholstery

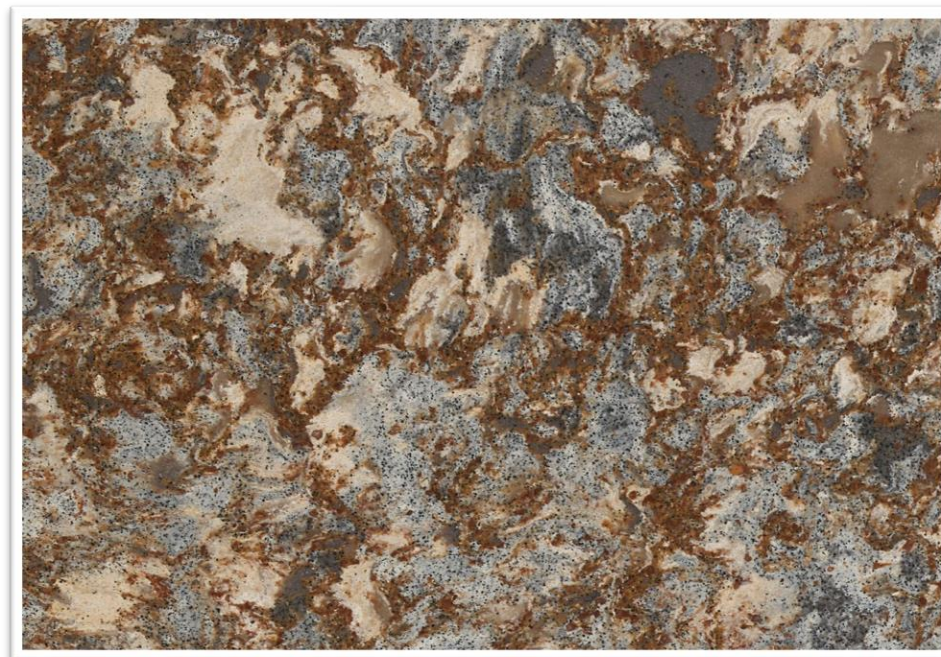
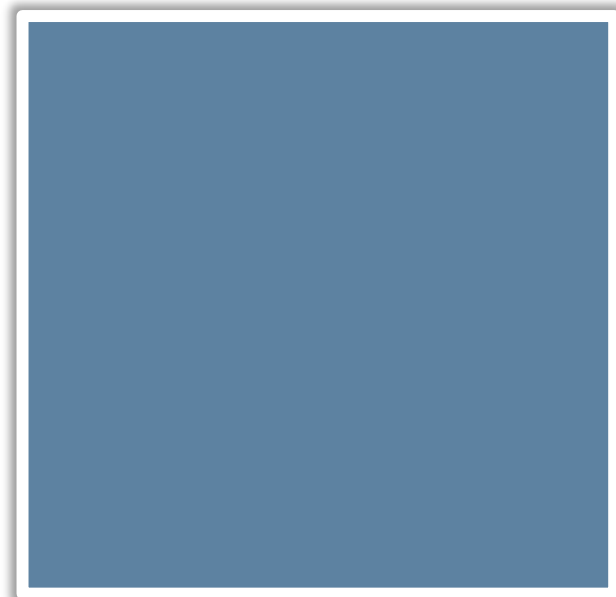
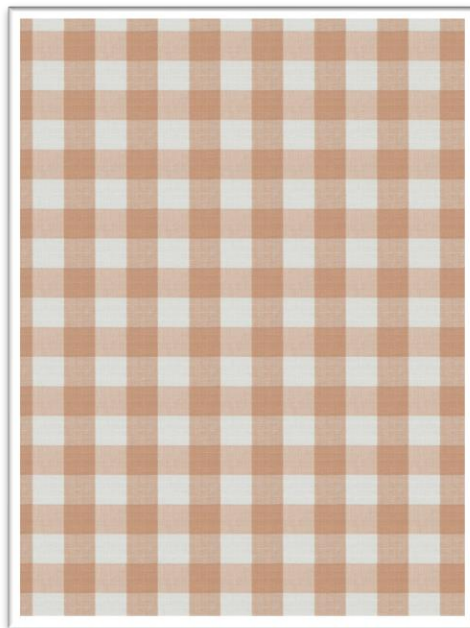
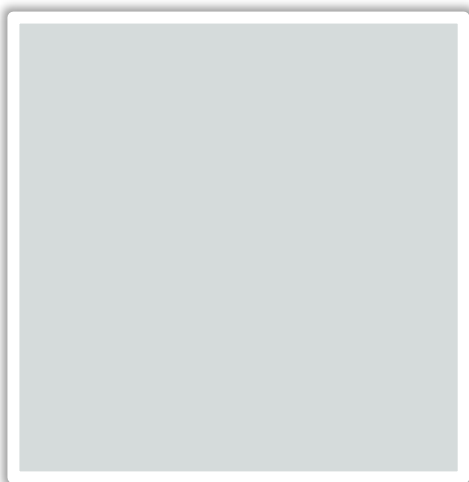


Biron Strie Check: Sea Shell

- Brand: Fabricut
- 100% Cotton
- Exceeds 24,000 double-rubs

We recommend this fabric to upholster the sofa and two armchairs for the living area. The English country style frequently incorporates checkered patterns into the space. The color is soft, not too bold, and adds to the comfort and warmth of the living room. We also recommend repeating the pattern in the kitchen as a decorative window fixture.

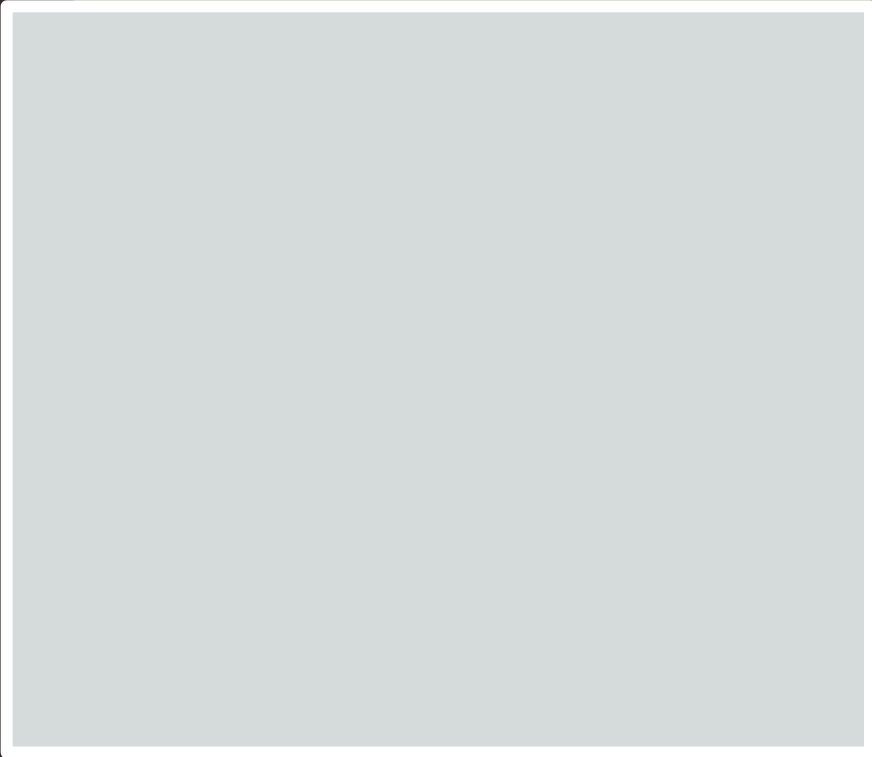
Kitchen



Paint

Borrowed Light No. 235

- Farrow and Ball

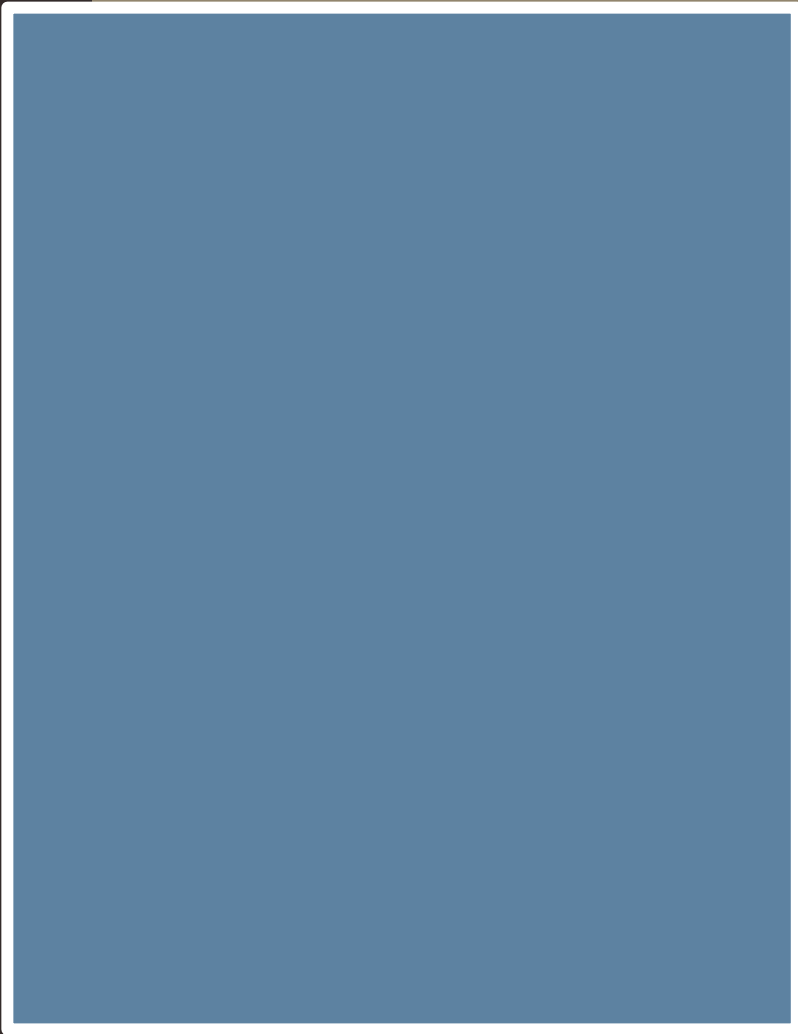


We recommend blue *Borrowed Light* as a wall color and for the upper cabinets in the room to give a little brightness to the room and use the color to incorporate a feeling of bringing the sky into the kitchen for an airy atmosphere desired with the English cottage style.

Paint

Ultra Marine Blue No. W47

- Farrow and Ball



We also recommend using Farrow & Ball's *Ultra Marine Blue* for the lower-cabinets in the kitchen. This color brings weight to the cabinets and follows a current trend in cottage kitchens.

Flooring

Luxe Plank with Fastak Install – Countryside Oak

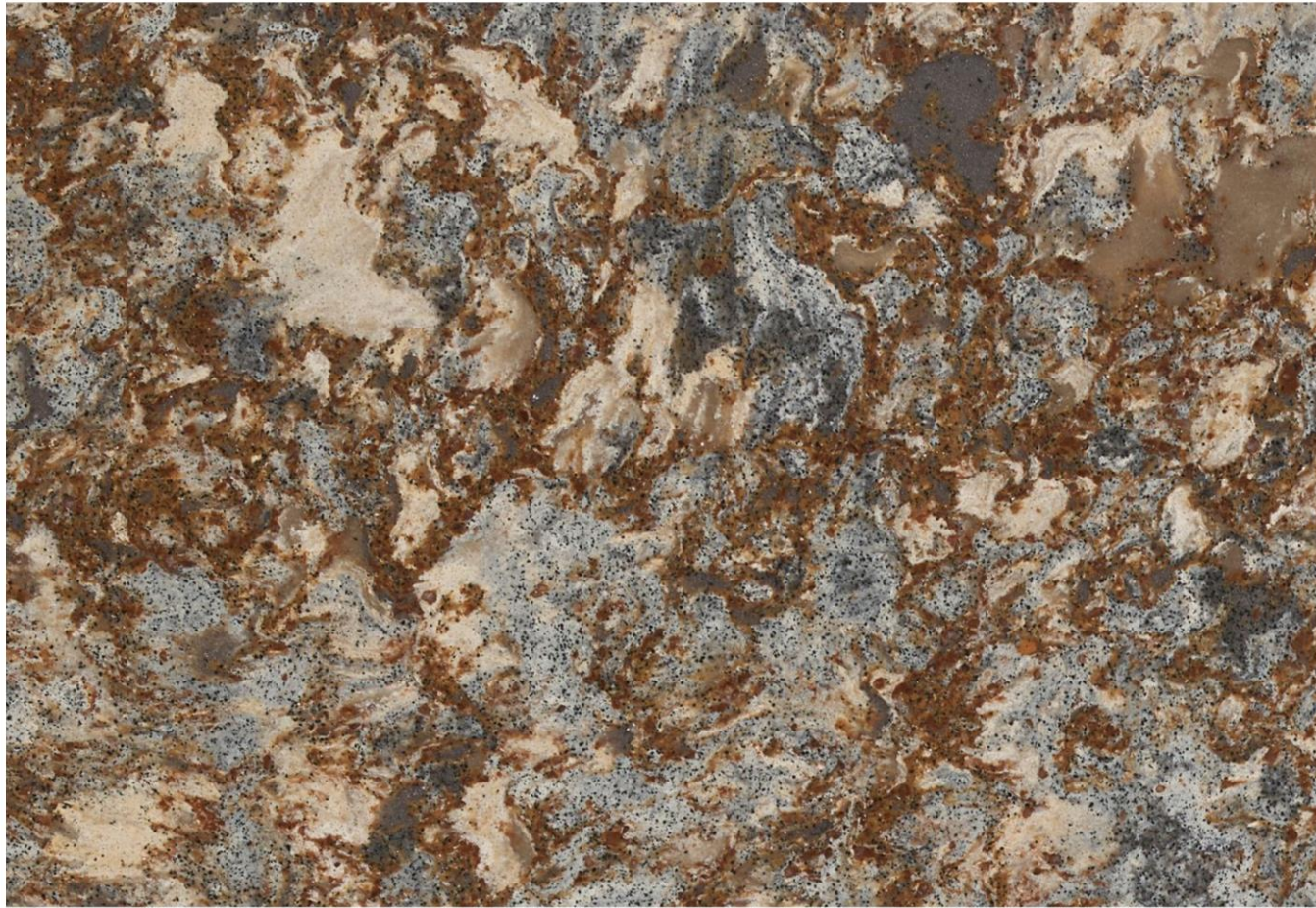


- Luxury Vinyl Tile (LVT)
- Brand: Armstrong Flooring

Linden Leaf Interiors recommends this LVT as the flooring in the kitchen for this redesign. Not only is it durable and easy to take care of, the pattern of hardwood gives the kitchen a natural feel without the worry of damaging the wood. English cottages are known for reflecting nature in the design and having a wood-like floor contributes to the overall feel of the space.

Countertop

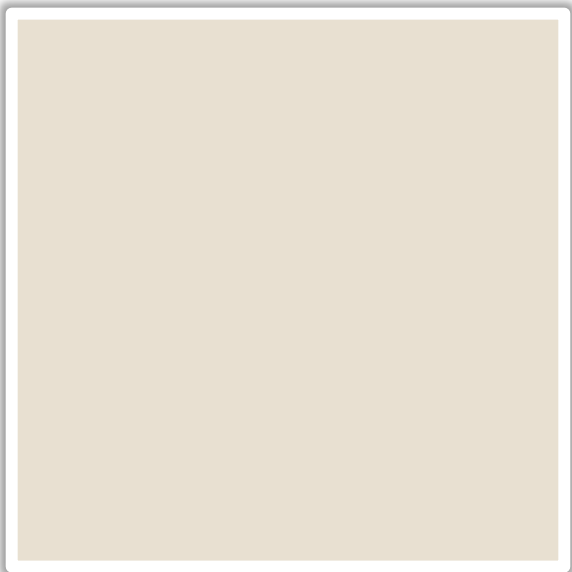
Quartz - Havergate



- Cambria
- Manufactured Quartz

For a lasting and natural look, we recommend using Cambria's Havergate quartz countertop. Quartz is easy to care for, durable and stain resistant. Not only is it a reliable countertop, the colors of this particular pattern mesh well with the colors and pieces in the space and ties in a natural feel with the countertop.

Bathroom



Wallcovering

Hegemone BP 5706

- Farrow & Ball

Linden Leaf Interiors suggests the use of *Hegemone* in the blue color palate for the bathroom. English country style boasts many floral patterns, and the colors are muted, not harsh.



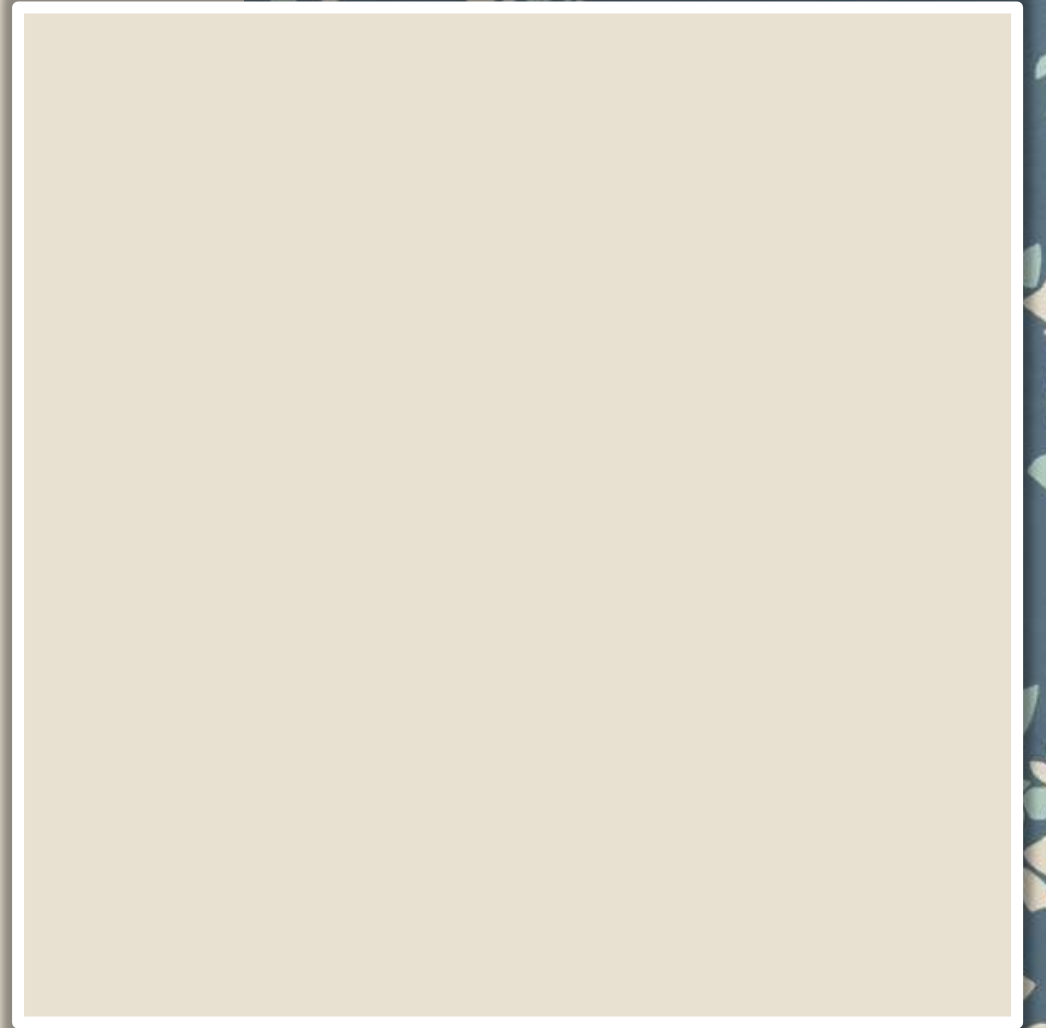
Linden Leaf Interiors

Paint

Slipper Satin No.2004

- Farrow & Ball

Slipper Satin is recommended as the trim color in the bathroom. Traditional English design utilizes softer colors in the home, and the color complements the wallcovering chosen.



Floor Tile

Spanish Cotto

- Brand: Walker Zanger
- Size: 6-1/2 x 13
- Finish: Unglazed
- Shapes: Rectangle
- Material: Ceramic

The floor tile we recommend for the bathroom adds the handmade feel to the bathroom. Using these tiles in an English bond pattern on the floor (using the 6-1/2 x 13 tile along with the 6-1/2 x 6-1/2 size as well) and a light colored grout will give the space more of that country feeling.



Floor and Wall Tile (Around Tub)

Rue Pierre Gris Antique

- Brand: Walker Zanger
- Color: Gris
- Size: 12 x 18
- Thickness: 3/8"
- Finish: Antique
- Piece: Field
- Shapes: Rectangle
- Material: Stone Tile

On the floor and walls around bathtub, a repeated Rue Pierre stone tile is suggested. The natural stone once again brings homage to nature in the English country bathroom, but also lightens the space a bit so it is not too dark.



Accent Wall Tiles

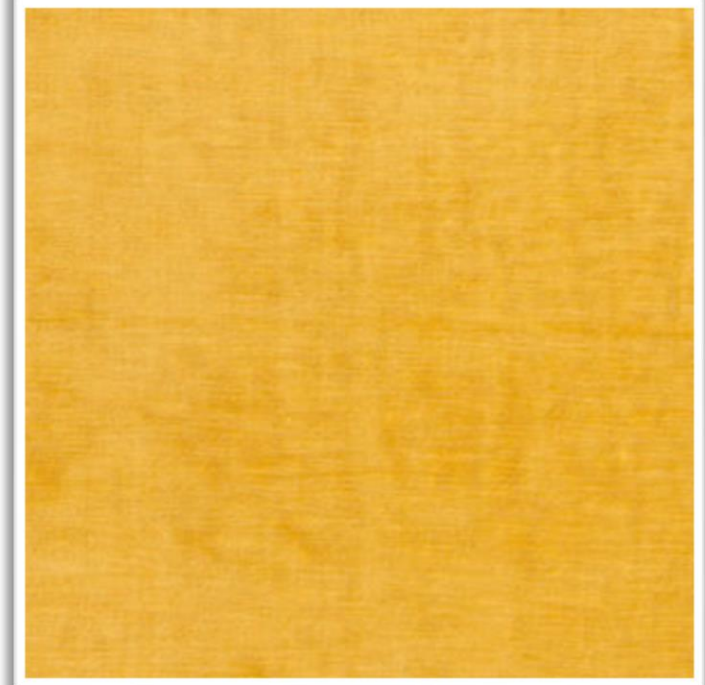
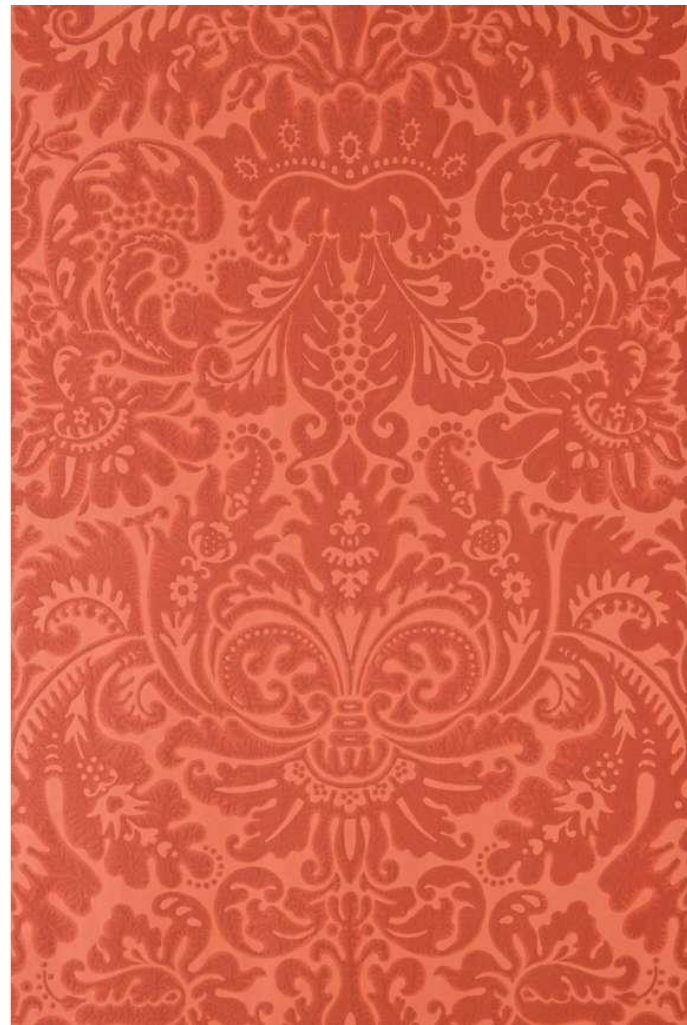
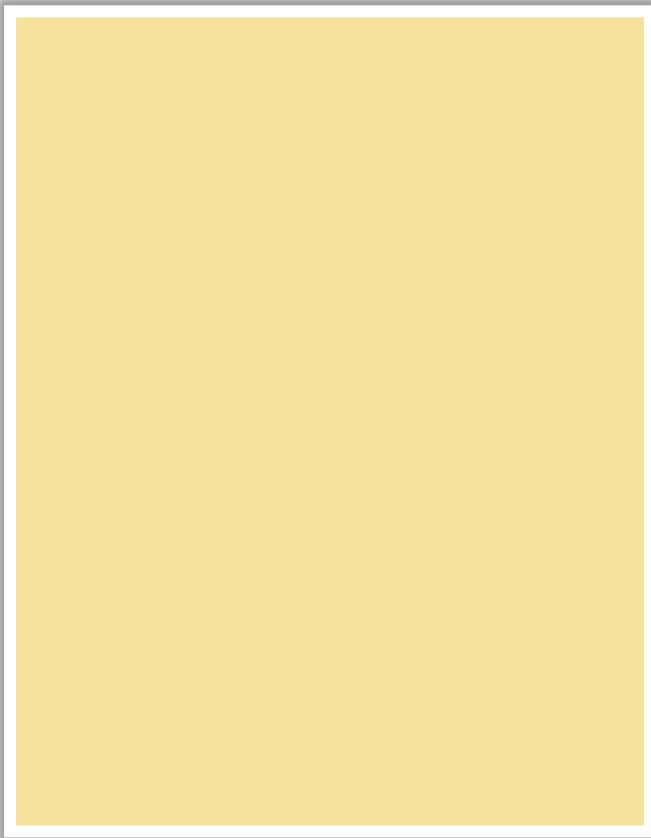
Lisbon Decorative Field

- Brand: Walker Zanger
- Color: Acqua
- Size: 4-5/8 x 4-5/8
- Thickness: 5/8"
- Finish: Matte
- Piece: Field
- Shapes: Square
- Material: Ceramic

Interwoven into the Rue Pierre tiles, these Lisbon Decorative tiles will bring more of the English country florals into the space. While not overdoing the pattern, allowing the blues from the wallcovering to touch the light walls around the bathtub tie it all together.



Dining Room



Wallcovering

Silvergate BP 817 – Farrow & Ball

Silvergate is the wallcovering used, also by Farrow & Ball. The damask pattern is popular in English castles and palaces, and Windsor is no exception. Linden Leaf Interiors recommends using this wallpaper to enhance the feeling of English royal formality in the dining room.

Paint and Wallpaper

Dayroom Yellow No. 233 – Farrow & Ball

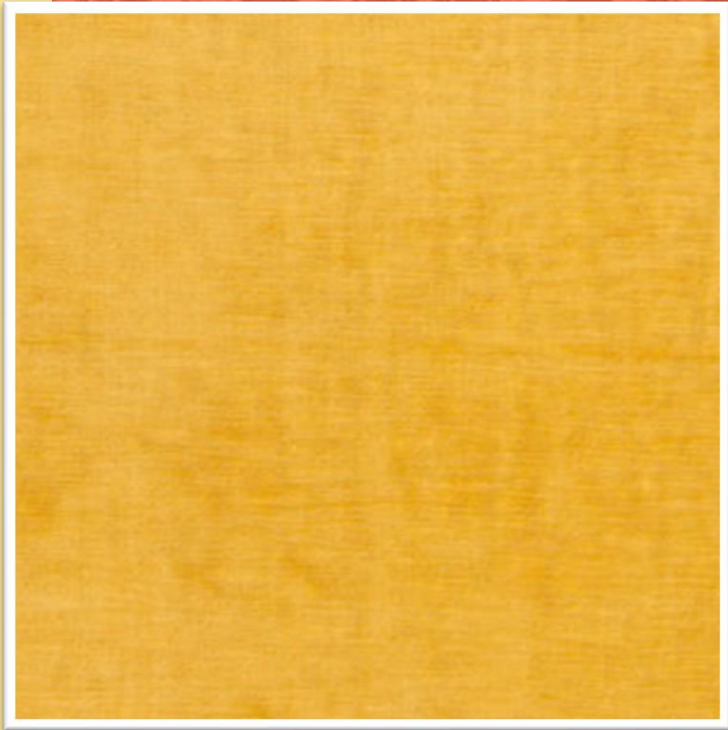
Dayroom Yellow by Farrow & Ball is recommended for the trim in the dining room. Inspiration for the walls and colors are taken from Windsor Castle, with reds and golds throughout the spaces.

Window Fixture: Curtains

Epicure Linen Velvet Honey

- Brand: Stroheim
- 52% Cotton, 48% Linen

The curtains are meant to complement the color scheme of the Windsor-themed dining room while also mirroring the fanciful fringed curtains of English palaces. The cotton/linen combination of the components gives the fabric a good weight for curtains.



Window Fixture: Curtains

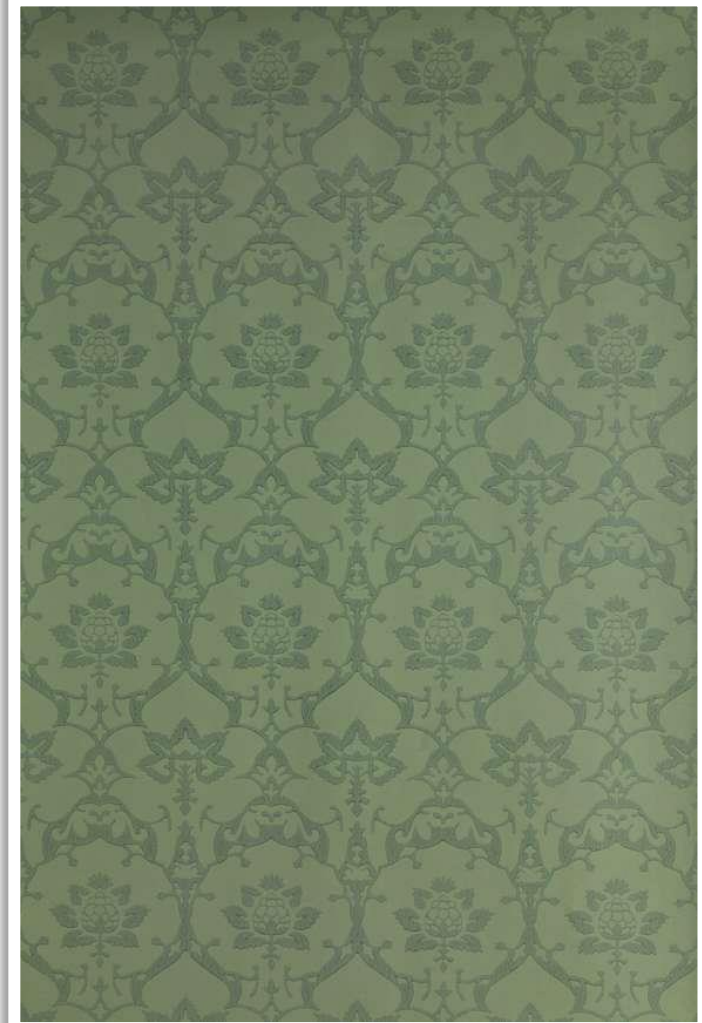
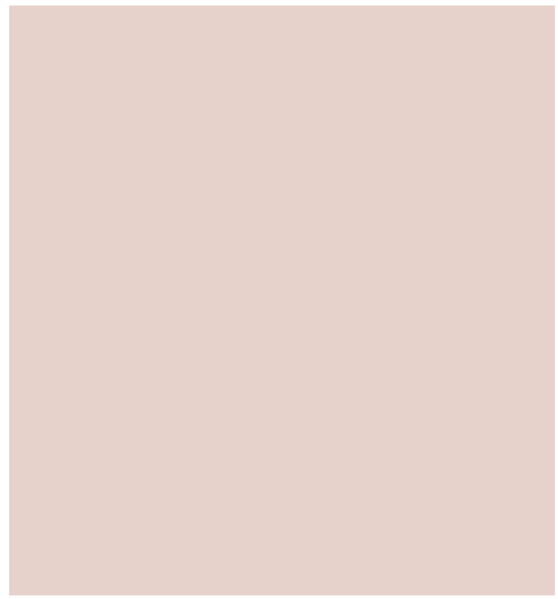
0268L Rouche S0350 Sweetheart Ros (Trimming)



- Brand: Stroheim
- 52% Polyester, 48% Viscose

The curtains are meant to complement the color scheme of the Windsor-themed dining room while also mirroring the fanciful fringed curtains of English palaces. The red fringe gives the gold fabric a formal, fancy touch and gives character to otherwise solid drapes.

Master Bedroom



Flooring: Area Rug

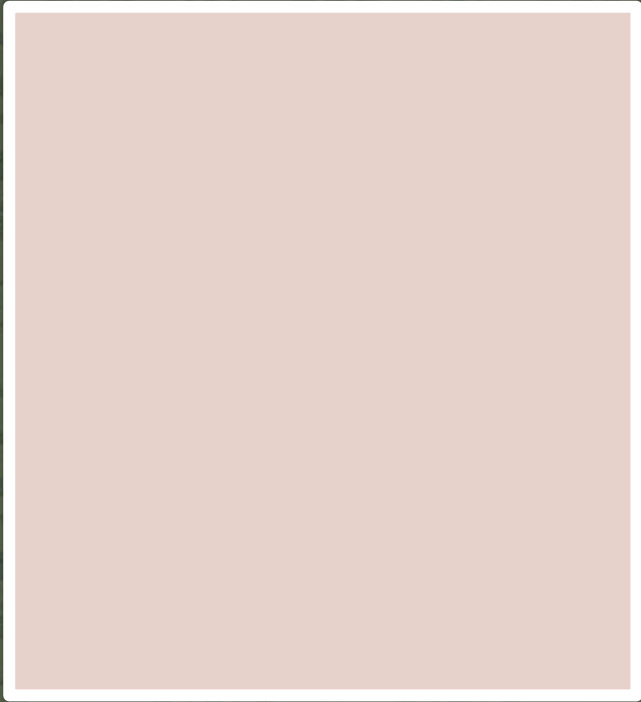


Portuguese Needlepoint

- Size: 9.11 x 13.10
- Sullivan Fine Rugs

Reminiscent of the rugs found in English palaces, Linden Leaf Interiors suggests this floral rug from Sullivan Fine Rugs. The rest of the room will take inspiration from the rug.

Paint



Calamine No. 230

- Farrow & Ball

A muted Calamine wall color is suggested for the master bedroom. The color complements the English style rug and follows the English tradition of muted colors in the home.

Paint



Studio Green No. 93

- Farrow & Ball

For the trim, Studio Green was selected as part of the rug color coordination. Again, muted colors are part of the English style.

Wallcovering

Brocade BP 3207

- Farrow & Ball

For the wall behind the Antique Gregorian Poster bed the Staffords currently own, this Brocade wallcovering is recommended. With its floral damask style and colors complementary to the rug on the floor, it ties everything together within the room while also adding an additional English facet to the room.

Resources

<https://fabricut.com/>

<https://nationalflooringwarehouse.com/>

<https://www.cambriausa.com/>

<https://www.sullivanfinerugs.com/>

<https://www.walkerzanger.com/>

<https://www.farrow-ball.com>