

Glacier National Park: Bighorn Sheep Habitat

The National Park Service is working to identify areas of suitable Bighorn Sheep habitat which can be prioritized for conservation and management efforts.

Fig. A

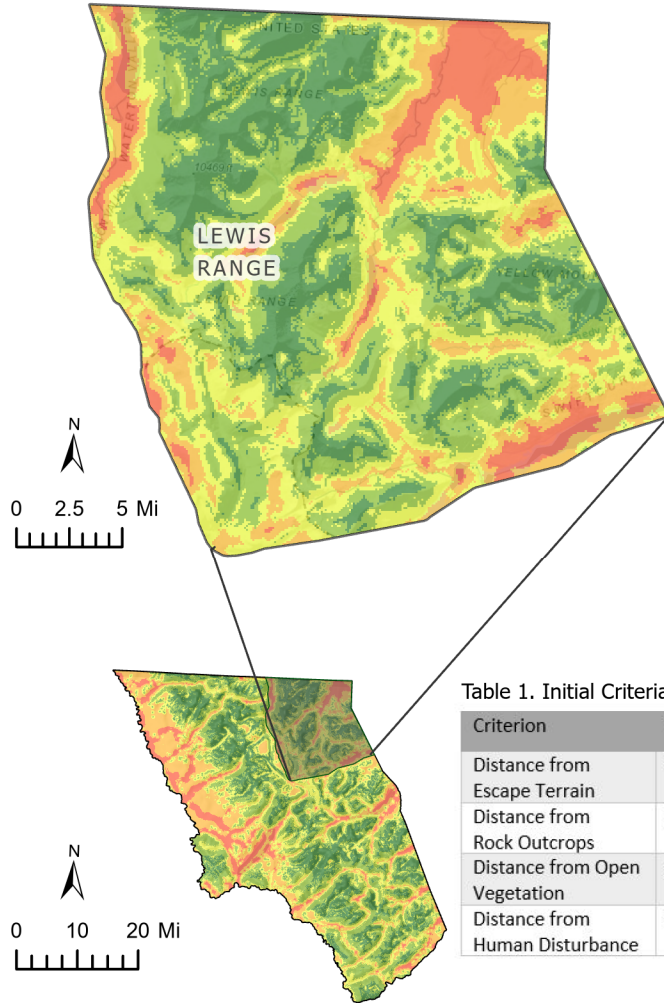


Table 1. Initial Criteria Weights

Criterion	Weight
Distance from Escape Terrain	0.5
Distance from Rock Outcrops	0.1
Distance from Open Vegetation	0.1
Distance from Human Disturbance	0.3

Fig. B

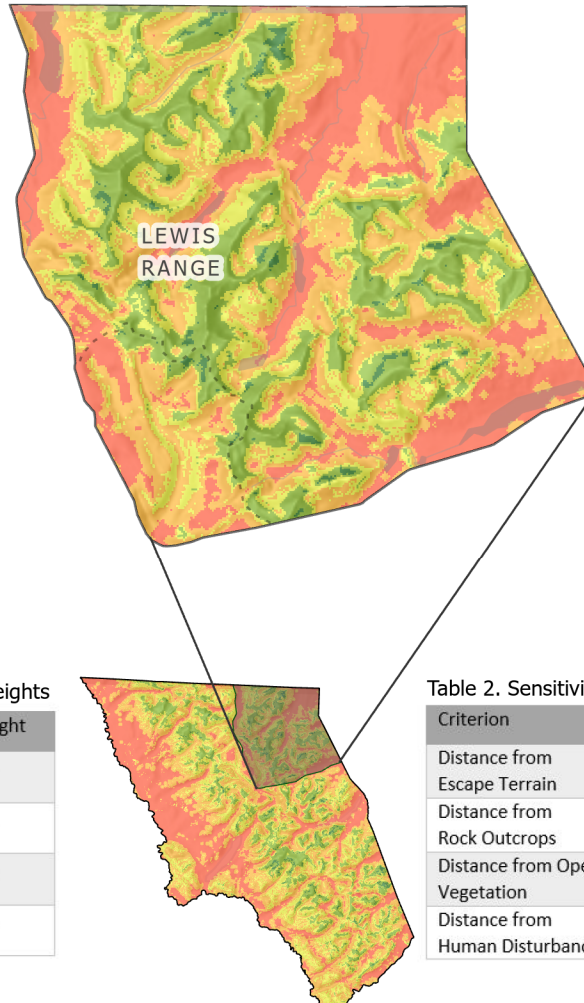


Table 2. Sensitivity Analysis

Criterion	Weight
Distance from Escape Terrain	0.3
Distance from Rock Outcrops	0.3
Distance from Open Vegetation	0.3
Distance from Human Disturbance	0.1

Suitable Habitat Criteria:

- i. Escape Terrain
Slope between 27-85
- ii. Rock Outcrops
Distance from rock outcrops
- iii. Vegetation
Open/semi-open vegetation
- iv. Human Disturbance
Distance from roads and trails

Weighted suitability analysis assigned each criterion a weight based on relative importance (Tables 1 and 2). Maps incorporate weighted criteria to display suitable habitat.

Sensitivity analysis shows the changes in total area and location of suitable habitat when weight is more evenly distributed among criteria (Fig B) as compared to a stronger weight placed on Distance from Escape Terrain criterion (Fig A).

