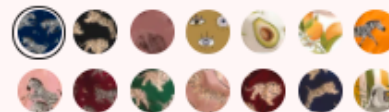


Adah Two-Piece Set

€80.30 EUR ~~€114.11 EUR~~



Pre-order now and get 30% off

ADD TO CART

Shipping starts: 19th October

Adah comes in a striking cobalt blue color exuding elegance. The name means 'beautiful addition' – just as Adah makes a beautiful addition to your wardrobe. Whether you are drifting off to sleep, or pair it with some heels for your dinner date.

Our timeless pieces are incredibly smooth and lightweight on your skin. They are made from fine Japanese Satin from 100% polyester. Each set consists of a classic long sleeve shirt with piping detail on the lapel and cuff sleeve, along with comfortable full-length pants with an elasticized waistband and ribbon.

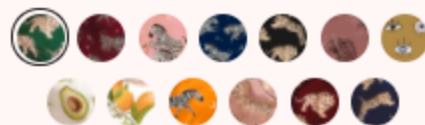
The tailored yet relaxed fit has a soft silky feel and enables you to channel your inner leisure goddess 24/7.

fabric & care





Zola Two-Piece Set

\$95 ~~-\$118.75~~*Preorder now and get 25% off*

ADD TO CART

Shipping starts: 21st September

Zola, with its soft tiger print on a luscious green backdrop, derives from the word 'peaceful'. Just as you will enjoy a sense of inner peace and comfort clad in these silky satin PJs. No matter if lounging about at home, or nipping out to the store.

Our timeless pieces are incredibly smooth and lightweight on your skin. They are made from fine Japanese Satin from 100% polyester.

Each set consists of a classic long sleeve shirt with piping detail on the lapel and cuff sleeve, along with comfortable full-length pants with an elasticized waistband and ribbon.

The tailored yet relaxed fit has a soft silky feel and enables you to channel your inner leisure goddess 24/7.





Alegria Two-Piece Set

\$95 ~~-\$118.75~~*Preorder now and get 25% off*

ADD TO CART

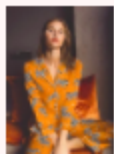
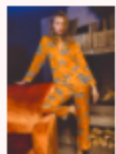
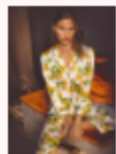
Shipping starts: 21st September

Alegria's crisp, juicy print is like a burst of sunshine transporting you to warmer climates where fragrant lemon trees grow. Light on the touch, it keeps you cool during the day and nice and snug in the evening, assured to brighten up any room you walk into.

Our timeless pieces are incredibly smooth and lightweight on your skin. They are made from fine Japanese Satin from 100% polyester.

Each set consists of a classic long sleeve shirt with piping detail on the lapel and cuff sleeve, along with comfortable full-length pants with an elasticized waistband and ribbon.

The tailored yet relaxed fit has a soft silky feel and enables you to channel your inner leisure goddess 24/7.





Dalia Two-Piece Set

\$95 ~~-\$118.75~~



Preorder now and get 25% off

ADD TO CART

Shipping starts: 21st September

Dalia is our little sweetheart. The silky tiger print is offset by a soft rose background, which induces you with a certain romantic nostalgia for times gone by. It makes us long for cozy evenings in front of an open fire with a glass of bubbly – or two.

Our timeless pieces are incredibly smooth and lightweight on your skin. They are made from fine Japanese Satin from 100% polyester.

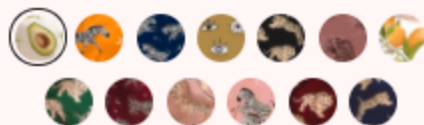
Each set consists of a classic long sleeve shirt with piping detail on the lapel and cuff sleeve, along with comfortable full-length pants with an elasticized waistband and ribbon.

The tailored yet relaxed fit has a soft silky feel and enables you to channel your inner leisure goddess 24/7.





Esperanza Two-Piece Set

\$95 ~~-\$118.75~~*Preorder now and get 25% off*

ADD TO CART

Shipping starts: 21st September

Esperanza with its irresistible avocado print evokes our favorite ritual of the day: breakfast. Coffee, eggs (sunny side-up) and avo-toast, s'il vous plait. Playful and elegant at the same time, our avo PJs are a surefire conversation starter for all occasions.

Our timeless pieces are incredibly smooth and lightweight on your skin. They are made from fine Japanese Satin from 100% polyester.

Each set consists of a classic long sleeve shirt with piping detail on the lapel and cuff sleeve, along with comfortable full-length pants with an elasticized waistband and ribbon.

The tailored yet relaxed fit has a soft silky feel and enables you to channel your inner leisure goddess 24/7.

