

GEORGIA DEPARTMENT OF TRANSPORTATION (GDOT) AND SERCO RECOGNIZED WITH BEST OF ITS AWARD

GDOT and Serco won a Best of ITS award at the 2016 ITS America Annual Meeting for the Georgia NaviGator Comprehensive ITS Maintenance program. The system has been able to maintain the highest levels of operational availability of ITS through constant monitoring, as well as preventative and responsive maintenance statewide, to reduce costs. It has made it possible to achieve 99.34 percent device availability on approximately 3,000 ITS devices on the system. Accepting the award were Timothy Bean of Serco and GDOT's Mark Demidovich.



Photography credit: Traffic Technology Today

RICHARD DUNN TO LEAD GEORGIA ENVIRONMENTAL PROTECTION DIVISION (EPD)

Richard Dunn, former Deputy Director of the Governor's Office of Planning and Budget, has been formally appointed to Director of Georgia's top environmental agency. Dunn will replace former Director Judson Turner, who recently relinquished the role after four years at the helm. Lauren Curry, former Chief of Staff for the Georgia Emergency Management/Homeland Security Agency will step into position as the EPD's Deputy Director.



Richard Dunn



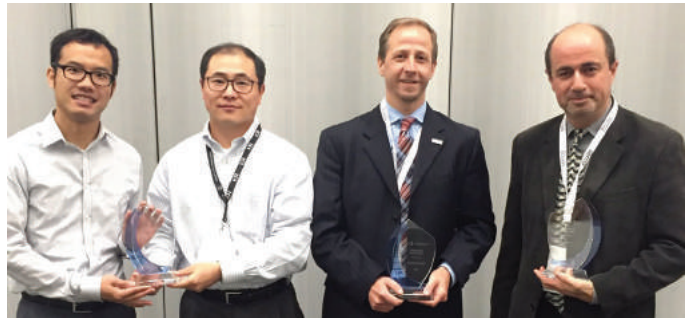
Lauren Curry

THOMAS & HUTTON LISTED AMONG BEST PLACES TO WORK BY GEORGIA TREND

Savannah-based Thomas & Hutton ranked sixth on *Georgia Trend's* 2016 Best Places to Work listing. The rankings were selected through a series of questionnaires and surveys in which employers and employees detailed company policies, demographics, leadership, corporate culture, communications, pay and benefits, and overall engagement.

THE INTELLIGENT TRANSPORTATION SOCIETY OF GEORGIA (ITS GEORGIA) NAMED 2016 OUTSTANDING STATE CHAPTER

ITS Georgia was recognized as the Outstanding State Chapter for 2016 by the Intelligent Transportation Society of America at the ITS America 2016 Convention. The ITS America State Chapter awards are given annually and are the highest form of recognition a state chapter can receive. ITS Georgia has previously won the award in 2012 and 2014. Visit www.itsga.org or connect with ITS Georgia via Twitter – @ITSGA – to learn more about their efforts across the state.



ROHADFOX CONSTRUCTION CELEBRATES 40TH ANNIVERSARY

Rohadfox Construction Control Services Corporation (RCCSC) is one of the oldest minority construction and program management firms in the country, entering its 40th year in business. RCCSC was founded by Dr. Ronald O. Rohadfox in Los Angeles and is now led by his daughter, Joy Rohadfox, who moved the headquarters to Atlanta in 2001.

GEORGIA PORTS AUTHORITY GRANTED \$44 MILLION

In an effort to increase rail capacity at the Port of Savannah, the Georgia Ports Authority (GPA) has received a \$44 million Fixing America's Surface Transportation (FAST) grant. The grant will help to fund just over a third of the \$128 million Port of Savannah International Multi-modal Connector project, which is expected to take five years to complete. Earlier this summer, GPA also received a 2016 Environmental Protection Agency Clean Air Excellence Award for its electric rubber tire gantry crane program. The program transfers its container-handling equipment from diesel to electric power and is the first technology and specific design of its kind to be implemented in a port in North America.

DOUGLAS COUNTY DOT RECEIVES GRANT FOR SAFETY ENHANCEMENTS

The Douglas County Department of Transportation (DOT) was awarded more than \$896,000 through the state's 2016 Local Maintenance and Improvement Grant to pay for safety enhancements for road projects. According to the Douglas County DOT, the money will be used to build more roadside shoulders, stripe roads, install more reflective pavement markers and place more flashing lights in school zones. "These enhancement projects are state of practice standards and are considered proactive measures to improve roadway safety and enhance driver awareness, particularly at night," Randy Hulsey, Director of Douglas County DOT, said.



CLARK PATTERSON LEE EXPANDS REGIONAL HEADQUARTERS

Full-service design firm, Clark Patterson Lee, celebrated the opening of its new and expanded regional headquarters in Suwanee. The firm has been serving public and private clients across the southeast for more than 40 years. “We are very thankful for our amazing clients and talented staff that deliver our services every day,” Kevin McOmber, Senior Vice President for Clark Patterson Lee, said in a press release. ▲

FAA PROVIDES CLARITY AND EXPANDS UAV RULE

The Federal Aviation Administration (FAA) officially announced expanded regulations on the use of unmanned aerial vehicles (UAVs) for commercial applications to take effect on August 29. Among the changes included in the ruling, the FAA expanded the altitudes at which UAVs are permissible – now allowing objects higher than 400 feet if the operator remains within 400 feet of the object and set UAV speed limits to not exceed 100 mph.

As the use of UAVs and drones increases and becomes more commonplace, especially for firms in the engineering and construction industries, this ruling by the FAA signals a greater acceptance of their role for commercial uses. For companies like Burns & McDonnell, who was one of the first engineering and construction firms to use UAVs for survey and inspection work, the expanded ruling will allow them to pursue waivers to expand their use into more remote areas, while also operating fewer flights from greater distance.

SOUTHERN CO. AND AGL RESOURCES COMPLETE MERGER

Atlanta-based Southern Co. and AGL Resources, Inc. announced their merger is now final after energy regulators in New Jersey signed off on the \$12 billion deal. The Georgia Public Service Commission approved the acquisition of AGL Resources by Southern Co. in April, allowing the creation of the nation’s second-largest utility.

The merger combines 11 electric and natural-gas distribution companies serving nine million people and will use its nearly 200,000 miles of electric transmission and distribution lines, as well as 80,000 miles of natural gas pipelines.

NEW DATA SHOWS MARTA STATIONS ARE HELPING GROWTH OF TRANSIT-ORIENTED PROPERTIES

According to new data from Cushman & Wakefield, a commercial real estate services company, multi-family projects closest to existing MARTA stations are showing stronger rent growth and lower vacancy rates than the overall market in both in-town and suburban areas. Cushman & Wakefield studied rent and vacancy trends at million square feet of office space within a quarter mile of MARTA stations and 30,000 multi-family units within a half mile. One contributing factor is the increase in MARTA ridership, as more people look to work and live near transit. “New office and residential developments being built within a quarter-to-half-mile from MARTA rail stations are emerging as a cohesive whole, where someone can live in Midtown, yet work in Central Perimeter, and not need a car,” Cushman & Wakefield said. This is something new to Atlanta. If more Atlantans decide to give up their cars, we can expect this trend to accelerate.”

GOVERNOR NATHAN DEAL ANNOUNCES PROJECT TO REPLACE I-20 BRIDGES IN PARTNERSHIP WITH SOUTH CAROLINA

Georgia Governor Nathan Deal announced a partnership with South Carolina to replace existing I-20 bridges over the Savannah River and the Augusta Canal, as well as to add lanes on I-20 to Exit 1 in South Carolina. The estimated \$75 million project will help enhance safety and operations. The proposed new bridges will have three travel lanes in each direction, and a part of I-20 will be widened from four to six lanes. “The replacement of both bridges is critical to the safe movement of goods and people to and from both states,” said Georgia Department of Transportation (GDOT) Commissioner Russell McMury in a press release. “Due to economic growth on both sides of the river, it is imperative that the bridge infrastructure meet modern demands, and so we are eager to work with South Carolina to move this project forward.”

GDOT and the South Carolina Department of Transportation will each pay a proportional share of the preliminary engineering and construction costs and GDOT will procure the project through a design-build contract. The project is expected to be put out for bid in Fall 2018.

GEORGIA POWER GIVEN GO-AHEAD ON NEW NUCLEAR PLANT

Atlanta-based Georgia Power Co. was given permission to begin laying the groundwork for a new nuclear power plant south of Columbus, Ga. Georgia Power had asked the Georgia Public Service Commission for authority to recover from customers up to \$175 million in costs associated with the work, but the Commission voted (4-1) to grant spending up to \$99 million on the early stages of the project through the second quarter of 2019.

GDOT ANNOUNCES DATA-SHARING PARTNERSHIP WITH WAZE

The Georgia Department of Transportation (GDOT) and Waze, the crowdsourced navigation app, announced a data-sharing partnership. The two will freely share available traffic information through the Connected Citizens Program to promote greater efficiency, deeper insights and safer road conditions. While Waze will provide incident and slow-down information to GDOT for drivers, GDOT will supply construction, crash and road closure date in exchange.

CALL FOR ENTRIES

The Georgia Engineering Foundation (GEF) awards scholarships to Georgia college students who are preparing for a career in engineering or engineering technology. Since 1985, nearly 800 students have been awarded scholarships. In 2015 alone, 42 awards and more than \$78,000 was given. All scholarships are competitively awarded based on academic achievements, interest in pursuing a career in engineering, financial need, as well as school and community development. Application deadline is August 31, 2016. Visit www.gefinc.org for more information.

The Georgia Partnership for Transportation Quality (GPTQ) Preconstruction Design Awards, presented by ACEC Georgia and the Georgia Department of Transportation, recognize projects which demonstrate transportation planning and design expertise. Awards are presented to engineering firm(s) in nine different categories, including Innovative Solution to a Design Problem/ Best Use of New Products, Bridge/Structural Design and Highway Design – Rural or Urban. In addition, one project is selected as the Grand Award Winner. Nomination deadline is August 15, 2016. Visit www.acecga.org for more information.



John Heath and Warren Dimsdale of Heath & Lineback Engineers, Inc. accept the 2015 GPTQ Preconstruction Design Grand Award from GDOT Commissioner Russell McMurry (center).

FUNDING APPROVED FOR 17 TRANSPORTATION PROJECTS TOTALING APPROXIMATELY \$27 MILLION

The State Road and Tollway Authority (SRTA) Board voted to approve funding for 17 different transportation infrastructure projects. The approximately \$27 million in grants and loans will be provided through the Georgia Transportation Infrastructure Bank (GTIB), a program which operates as a revolving infrastructure investment fund.

GTIB was founded in 2008 by Georgia legislators and is administered by SRTA. “Through the GTIB Program, significant transportation infrastructure investments have been made towards the future of our communities – continuing to give Georgia a competitive edge,” Governor Nathan Deal, who serves as Chair for the SRTA Board, said in a press release. “Georgia mobility is pivotal to the economic vitality of our great state and this supplemental funding will enhance accessibility and quality of life for employment centers throughout Georgia,” he added.

This year’s awardee’s included:

Counties	Cities	CIDs
Barrow	Doraville	Atlanta
Bulloch	Dunwoody	Buckhead
Cobb	Griffin	Cumberland
Forsyth	Gainesville	Red Top
Gwinnett	Sandy Springs	
Hall		
Lee		
Peach		

AECOM AWARDED BROOKHAVEN PEDESTRIAN AND STREETScape IMPROVEMENT PLAN PROJECT

Brookhaven Council members awarded a more than \$760,000 contract to AECOM to design a pedestrian and streetscape improvement plan along Peachtree Road – focusing on the area from North Druid Hills Road to Ashford Dunwoody Road. As a part of the project, AECOM will conduct a traffic study of the corridor in order to better evaluate needed safety and operational improvements along the road. Along with new sidewalks and crosswalks, the project will focus on improvements including landscaping, benches, bus shelters and pedestrian/street lighting along the corridor. The final plans are scheduled to be completed in September 2018, with construction beginning in 2019 or 2020.

Funding for the project will be provided by:

- Atlanta Regional Commission (ARC) LCI Grant
- MARTA Sidewalk Offset Fund Grant
- Public Works HOST Funds
- Additional ARC/LCI Grant Funds

ATLANTA NOW HOME TO FIRST INTERSECTION OF TWO SEPARATED, TWO-WAY BIKE LANES IN THE U.S.

July was a monumental month for the bicycling community. Downtown Atlanta, specifically the juncture of John Portman Boulevard and Peachtree Center Avenue, is now home to the first intersection of two separated, two-way protected bike lanes in the United States. The innovative design allows for two bidirectional bike lanes to cross each other at a four-way intersection and separates pedestrians from bicyclists.



A bicyclist uses one of the bike lanes at the intersection of John Portman Boulevard and Peachtree Center Avenue.

According to Becky Katz, Chief Bicycle Officer for the City of Atlanta, the main challenges the design needed to accommodate were:

- Create a safe way for bicyclists riding north or south on Peachtree Center Avenue to turn east onto John Portman Boulevard (toward Piedmont).
- Create a safe way for bicyclists riding east or west on John Portman Boulevard to turn south onto Peachtree Center Avenue (toward the State Capitol).
- Ensure that motorists turning left from John Portman to Peachtree Center do not turn into the protected bike lane.
- Design an intersection that slows down users so that people have time to react safely to one another.
- Provide space for bicyclists to stop safely without disrupting the flow of other bicyclists.



In June, the City of Atlanta launched its bike share program – allowing users to rent bicycles short-term from one of 10 stations located downtown. The program, which is operated by CycleHop, has 100 bicycles in operation and is expected to grow to have 500 bikes at 50 different stations by the end of 2016.

The final plan, designed with advice from Toole Design Group, features a bean-shaped corner safety island, which allows motorists to turn the corner at an angle which makes it easier to see approaching bicyclists.

John Portman Boulevard and Peachtree Center Avenue Intersection

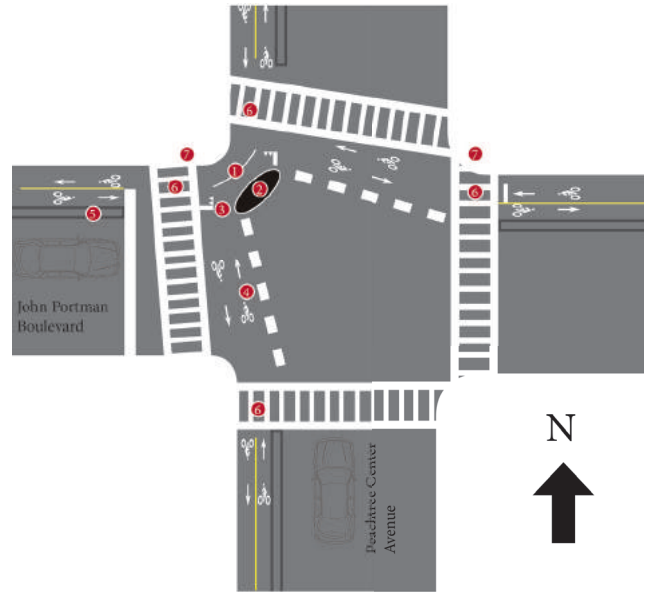


Diagram: City of Atlanta

- 1 Protected Intersection Bypass Space:** Bicyclists may stop within this space to turn left or right without stopping flow of through moving bicyclists.
- 2 Corner Safety Island (kidney bean):** Provides protection for bicyclists waiting at the intersection from turning vehicles and slows left turning vehicular traffic.
- 3 Yield Triangles (shark's teeth):** Consists of white triangles and require bicyclists to yield to cross bike traffic.
- 4 Striping:** Marking through the intersection will direct bicyclists at an angle into the protected intersection bypass space.
- 5 Granite Buffer:** Provides physical separation for bicyclists from traffic.
- 6 Crosswalks:** Bicyclists must yield to pedestrians in crosswalks.
- 7 Bike Signals:** Signals will let bicyclists know when they can proceed.



ASCE GEORGIA NICARAGUA TRIP

This May, members of the ASCE Georgia Younger Members Group took part in an international engineering mission to Kansas City, Nicaragua. The ASCE Georgia Nicaragua Team worked in partnership with Rivers of the World (ROW), a non-profit organization based out of Sugar Hill, Ga., and Peace and Hope Frontier Mission, based out of Beverly, Mass., to lend engineering guidance and construction support in the building of a 90-foot bridge over a deep-bed creek.

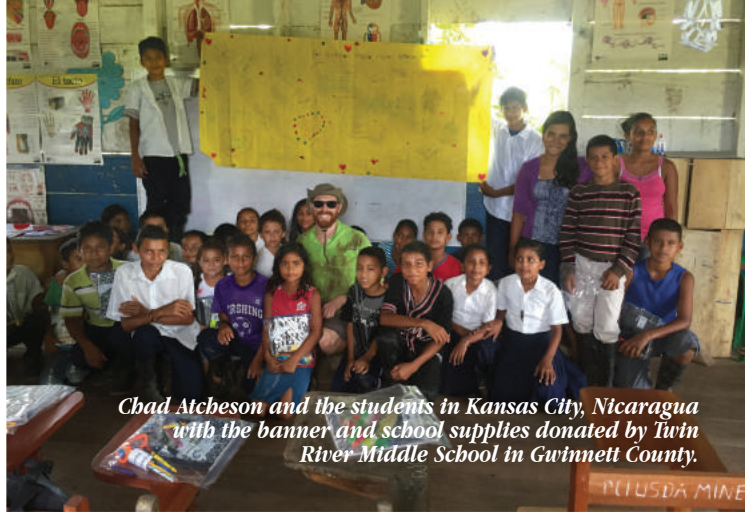
The team was able to complete the entire substructure of the bridge during their weeklong stay, with the remainder of the bridge to be completed once supplies are available following a shortage during a recent drought. Upon completion, the bridge will connect local residents with their community facilities.

For more information on ASCE Georgia's Younger Members Group, visit www.ascega.org. To learn more about Rivers of the World, visit their website at www.ROW.org. Or, to learn more about Peace and Hope Frontier Mission, visit www.peaceandhope.org.

The team, who included Rebecca Shelton, Iain Risk, Annie Blissit, Molly Capistrant and Chad Atcheson, travels from Kansas City to Anglo to inspect a contaminated well.



The new bridge posts being installed during the beginning phase of construction.



Chad Atcheson and the students in Kansas City, Nicaragua with the banner and school supplies donated by Twin River Middle School in Gwinnett County.



Annie Blissit, Molly Capistran and Rebecca Shelton prepare for the more than four hour boat ride from Bluefields to Kansas City.



The group built the entire sub-structure of the 90-foot bridge during their week-long trip.



Iain Risk and Rebecca Shelton show off their concreted, filled and compacted support hole.

2016 EXPLORING ENGINEERING ACADEMY

By Nikki Welch



A tour through Georgia Power gave students the chance to participate in Virtual Reality demonstrations.

For 16 years now, the Exploring Engineering Academy has provided a week of STEM-related group tours, presentations and hands-on learning for high school students on the Georgia Institute of Technology (Georgia Tech) campus. The volunteer-led effort is co-sponsored by the Boy Scouts of America and the Society of American Military Engineers (SAME).



Delta, one of the many companies involved in supporting the Exploring Engineering Academy, gave students a tour through its Technical Operations Center.

“We want to expose students to engineering and what it’s all about,” says volunteer Ray Willcocks. In order to achieve a complete immersion into engineering around Atlanta, the volunteers put together a schedule for the week which included tours of the forthcoming SunTrust Stadium, the Federal Reserve, Falcons Stadium, Atlanta Watershed,

Porsche Plant and the Georgia Aquarium. Other companies involved in educational presentations included: Delta, Novalis, Toto, Six Flags, General Electric, the Museum of Design Atlanta and, of course, Georgia Tech.

“The companies are so accommodating and bring their best and brightest to talk to the students.”

“The companies are so accommodating and bring their best and brightest to talk to the students,” says Aisha Stith, Exploring Executive with the Boy Scouts of America. With such a diverse selection of engineering and technology companies on the agenda, the students are not only exposed to the many different sectors of engineering, but also get to experience some special behind-the-scenes features. “The students were the first to get a group tour of the Porsche plant and were able to see the construction phase happening at SunTrust Park. They also experienced a VIP access tour with the engineers who helped build the aquarium,” says Stith.

Both Willcocks and Stith agree that the program draws a group of students who

are incredibly engaged and interested in all aspects of the engineering industry. “The quality of the kids who attend is unbelievable,” notes Willcocks. Stith adds, “There’s a lot of interest in this program – way beyond what we can accommodate. There were 100 families on the waiting list this year.”



Students were able to test drive Porsche vehicles on simulated tracks at the Porsche Experience Center in Atlanta during the week-long program.

The program has definitely experienced significant growth recently. “This year, we had 23 out of the 62 students who represent different minorities, both ethnicities and gender; each year we try to increase the number of young ladies who participate,” says Stith.

The Exploring Engineering Academy is the largest of the 12 STEM-related Exploring Programs in Georgia. “It’s a phenomenal program and I think we could do it on a much larger scale in the future,” says Stith.



UNITED
CONSULTING

United Consulting:
Celebrating 26 Years of Service
We're here for YOU!



**Environmental • Geotechnical
Geophysical • Special Inspections
Subsurface Utility Engineering (SUE)
Construction Materials Testing**



625 Holcomb Bridge Road • Norcross, GA 30071
(770) 209-2209 • www.unitedconsulting.com

ISO
9001:2008 Certified

ACEC GEORGIA welcomed **Charles Ezelle** of Thomas & Hutton as its 2016-2017 Chair. Ezelle follows now Past-Chair **Roseana Richards, P.E.** of Pond & Company in the role. The association also elected six new members to serve on its Board of Directors: **Rick Brownlow** with CH2M, **Al Edwards** with CERM, **David Goershel** with Amec Foster Wheeler, **Michael Planer, P.E.** with PES Structural Engineers, **Bayne Smith** with KCI Technologies and **Greg Teague** with Croy Engineering.



Brian Bolick

ATKINS, one of the world's most respected design, engineering and project management consultancies, has promoted **Brian Bolick, P.E.**, to Senior Division Manager. With more than 30 years of traffic engineering, transportation planning and design experience, Bolick will lead public and private sector business strategy in the southeast. He is based in Atkins' Atlanta office, helping to

further the firm's long history of client service in the state.

CDM SMITH INC. welcomed **Vincent Huang** to its Atlanta office. Huang earned his Masters in Civil Engineering from Clemson University and his MBA from Emory University, Goizueta Business School. He has more than 10 years of experience in public transportation infrastructure planning and investment analysis, market demand segmentation, and travel demand modeling, as well as financial modeling and valuation.



Sam Bertron



Jeanette Hamm

CONTOUR ENGINEERING, LLC hired **Sam Bertron** as a Staff Engineer. The firm also added **Jeanette Hamm, P.E.** to its Kennesaw office. Hamm brings more than 16 years of professional experience to the team with emphasis on site assessment; property redevelopment; multi-media regulatory compliance and auditing; large-scale remedial construction; and soil and groundwater remedial strategy design and implementation.

THE GEORGIA DEPARTMENT OF TRANSPORTATION (GDOT) welcomed back **Tim Matthews, P.E.** as a Senior Design Build Project Manager. Matthews previously worked for GDOT as a TIA Regional Coordinator and Senior Project Manager.



Andrew Farmer / Jeanne Kerney



Terry Rogers / Heidi Schneider

GRESHAM, SMITH AND PARTNERS (GS&P) announced four new hires to its Georgia practice. **Andrew Farmer**, Transportation Engineer and Design Group Leader; **Jeanne Kerney**, Senior Transportation Engineer; **Terry Rogers**, Senior Transportation Designer; and **Heidi Schneider**, Senior Environmental Professional. They will focus on growing and strengthening the range of GS&P's transportation services across Georgia and the Southeast. Farmer will work from GS&P's Alpharetta office location, while Kerney, Rogers and Schneider will be based in the firm's forthcoming downtown Atlanta office, focusing on project delivery for GDOT.

HNTB CORPORATION expanded its transportation team, hiring **Peter Bruno** as a Senior Project Manager. Bruno brings more than 25 years of experience to the team, which includes serving as Lead Project Manager for the Atlanta Streetcar Operations and Maintenance Tasks for MARTA.

KSI ATLANTA has hired **Jack Wilson, EIT** as the newest member of its Atlanta office. Wilson recently graduated from the University of Tennessee, Knoxville with a Masters of Science in Structural Engineering.



Mark Allnutt

MCCARTHY BUILDING COMPANIES announced the promotion of **Mark Allnutt** to Vice President of McCarthy's Southeast Division. Allnutt will oversee business development, office administration, virtual design and construction, as well as assist in McCarthy's preconstruction services. Allnutt has spent the majority of his 25-year career managing large healthcare projects, helping to build some of the most significant healthcare facilities in metro Atlanta.

NEWCOMB & BOYD has had numerous internal promotions: **Matthew Eason**, **Richard Dozier**, **Mathew DiPiro** and **Jonathan Bair** to Associate Partners; **Javad Khazaii** and **Jessica Clements** to Senior Associates; **Stephen Wiggins** to Director of Commissioning; and **G. Brendan Gardes** to Director of Energy and Sustainability.



Mickias Adera



Daniela Cardona



Doug Yarbrough



Brian Steele

NOVA ENGINEERING AND ENVIRONMENTAL recently announced four new additions to its Kennesaw office: **Mickias Adera**, **Doug Yarbrough** and **Daniela Cardona** joined the Building Envelope Department with **Brian Steele** bringing his expertise as a Geologist to the team.



George Fragulis

POND & COMPANY announced the addition of several new hires: **Kamran Agharahimi, P.E.** as a Senior Electrical Engineer; **Andrew Antiweiler, P.E.** as a Transportation Project Manager; **Peter Hortman** as a Transportation Program Manager; and **Kyle Park, P.E.** as a Structural Engineer; **Dave Yensen, P.E.**, Program Manager and Associate for the firm's Defense Division; **Cara Scharer, P.E.**, Civil Engineer with its

Aerospace Group; and three within its TCD Group, **Yolanda Stover, P.E.** as Senior Engineer; **Jennifer Klich, P.E.** as a Civil Engineer and **Margie Pozin, P.E.**, CQA as Senior Project Manager. The firm also celebrated the promotions at its Atlanta headquarters of: **John Cassidy, P.E.** to Executive Vice President; **Chris Farnie, P.E.** to Senior Vice President; and both **Shaugh McReynolds, P.E.** and **Mark Willey, P.E.** to Vice Presidents. Additionally, Pond's **George Fragulis** was named a *Consulting-Specifying Engineer* 2016 40 Under 40 award winner.

PROFICIENT ENGINEERING brought on new hire **Megan Veringa** as its Director of Marketing and Business Development. Veringa's primary role is to prospect for new clients and build relationships within the A/E/C industry.



Keith Strickland

STANTEC welcomed **Keith Strickland, P.E.** to its Atlanta office. Strickland, who brings more than 35 years of experience in traffic engineering design and project management, transferred from the firm's Baton Rouge, La. office and will help in enhance the firm's transportation practice in the Southeast.

TRANSYSTEMS CORPORATION promoted **Richard Markwith Jr., P.E.** to Market Sector Leader for its States and Municipalities Sector. Markwith will be responsible for growing the practice serving state department of transportations, tollways and municipalities, providing strategic direction and overseeing sales.

WATERSHED GEO hired **David Cieply** as Vice President of its solid waste market. In his new role, Cieply will be responsible for overseeing all market development functions for the municipal solid waste area; working to cultivate strong relationships with cities, counties and private landfills seeking to enter the final landfill closure phase; and leading the expansion of municipal solid waste landfill sales.



Whether your transportation needs are by land, sea, or air, Terracon has the engineering resources and expertise, nationwide, to support your highway and road; rail and light rail; ports and waterways; and aviation projects. We provide alternative delivery methods, innovative solutions, and emerging technologies to deliver your project safely and successfully!

Terracon

Atlanta North, Georgia
(770) 924 9799
terracon.com/Atlanta-North

Atlanta, Georgia
(770) 623 0755
terracon.com/Atlanta

Savannah, Georgia
(912) 629 4000
terracon.com/Savannah

The Pulse | OUT & ABOUT



WTS INTERNATIONAL ANNUAL CONFERENCE AWARDS BANQUET: Daveitta Jenkins with CH2M and Jenny Jenkins with McGee Partners.



JOINT ITE AND YPT SOCIAL: A group of Georgia Institute of Transportation Engineers (ITE) and Young Professionals in Transportation (YPT) members at the Square Pub in Decatur for a networking event.



ITE SOCIAL: Nithin Gomez with Gresham Smith and Partners, Chris Maddox with AECOM, Sean Coleman with Kimley-Horn, Nate Prath with NDS, Patrick McAtee with Neel-Schaffer and Maggie Maddox with VHB at Tin Roof for the May get-together.



WTS INTERNATIONAL ANNUAL CONFERENCE AWARDS BANQUET: Approximately 25 WTS Atlanta members attended the Conference, held in Austin, TX.



HEATH & LINEBACK GOLF TOURNAMENT: Allen Krivsky of Heath & Lineback Engineers, Inc. presents a check for \$14,000 to Greg Elder of MUST Ministries following the day on the course.



ITE MONTHLY MEETING: Chris Rome with WSP | Parsons Brinckerhoff, Mike Blanchette with Kimley-Horn, Zach Gunter with WSP | Parsons Brinckerhoff and Bing Zhang with Kimley-Horn run the registration table for a summer monthly meeting at Georgia Tech.



HEATH & LINEBACK GOLF TOURNAMENT: Bruce McNitt of Arcadis receives his raffle prize post-tournament.



ENVIRONMENTAL • GEOTECHNICAL
BUILDING SCIENCES • MATERIALS TESTING

Proudly Serving
Georgia for Over
40 Years

- Environmental Consulting
- Geotechnical Engineering
- Building Sciences
- Construction Materials Testing
- Special Inspections

Georgia Offices:
Atlanta, Augusta, Columbus

Local Phone Number:
(800) 332-9456

ATCGroupServices.com

Maynard H. Jackson Jr. International Terminal
Hartsfield-Jackson Atlanta International Airport



Delivering the Transportation Experience for **50** Years



EXPERIENCE | Transportation

www.transystems.com

Since 1966, TranSystems has focused on transportation — delivering solutions to our clients and communities to enhance their experience and daily lives. We extend our gratitude to our dedicated clients and transportation experts for helping us reach this milestone and many more to come.

2016 GEORGIA ENGINEERS SUMMER CONFERENCE



Panelists with Walter P Moore, Balfour Beatty Construction, Steel Fabricators and Walt Disney Imagineering presented during the general session on how to bring a team approach to complex construction projects.



Jason Hewatt with Forterra Pipe & Precast, Susie Bender with Infrastructure Consulting & Engineering and Brian O'Connor of T.Y. Lin International.



Joe Macrina of Wolverton & Associates with his wife, Karen – along with Donald Duck and Goofy at the Saturday night Carnival.



Darrell Rochester of Rochester and Associates along with wife, Denise, grab a shot with Mickey Mouse and Minnie Mouse in between family pictures.



Panelists Sandra Piccirilli, John Pohle and Loreen Bobo following their presentation on using public-private partnerships to deliver transportation improvements.



Conference speakers John Classe, P.E., District Administrator for Reedy Creek Improvement District, Peter Markham, P.E., *Walt Disney World*® Resort's original resident engineer, alongside Michael Sullivan, President and CEO for ACEC Georgia and Al Petrangeli of Balfour Beatty Construction.



Sponsors Lisa Moreau and Robyn Tanner with TJS Deemer Dana.

DATABASE PREPARATION + INFRASTRUCTURE MAPPING + LASER SCANNING
I-75 NW CORRIDOR PROJECT

Rochester

PROVIDING INFRASTRUCTURE NEEDS SINCE 1966

Rochester
1966 **50** 2016

PROVIDING LAND SURVEYING SERVICES FOR CLIENTS
THROUGHOUT THE SOUTHEASTERN UNITED STATES

ROCHESTER PROVIDED DATABASE PREPARATION, LASER SCANNING,
AND UTILITY MAPPING FOR THE I-75 NW CORRIDOR PROJECT.

ROCHESTER-ASSOC.COM
770.718.0600
COLOSSIANS 3:23

The Pulse | OUT & ABOUT



Sponsor Pat Feyen of ACEC Life/Health Trust along with Fred and Barbara Nash of Anderson Corporate Solutions.



Summer Conference Committee Chair Nicole Reutlinger of Atkins poses with Mickey Mouse and Minnie Mouse.



Beth Ann Schwartz of Michael Baker International and Michael "Sully" Sullivan of ACEC Georgia with Breakout Session Speaker Ann Hanlon of North Fulton CID.



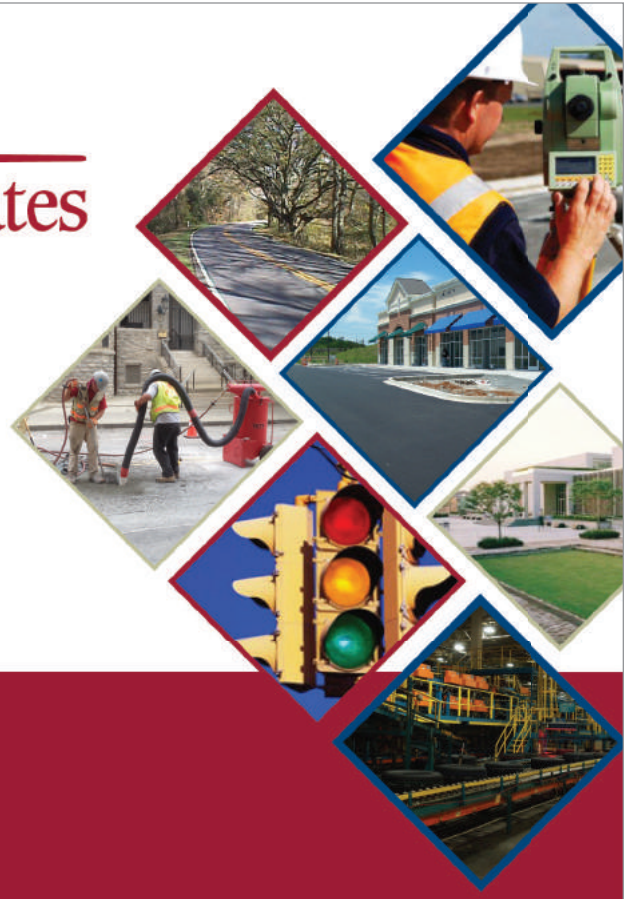
Tim Thornberry of Cornerstone Financial Partners, LLC and Mindy Wall of T. Wayne Owens in the Conference's Exhibit Hall.



Rebecca Settimio of Settimio Consulting Services, Inc. stands with Stan Hicks of Edwards-Pitman Environmental, Inc.

W Wolverton & Associates

- ◆ LAND DEVELOPMENT
- ◆ TRAFFIC ENGINEERING
- ◆ LAND SURVEYING
- ◆ TRANSPORTATION ENGINEERING
- ◆ SUBSURFACE UTILITY ENGINEERING
- ◆ INDUSTRIAL & BUILDING DESIGN



ATLANTA ◆ SAVANNAH ◆ NASHVILLE

www.wolverton-assoc.com

THOMAS & HUTTON
70TH
ANNIVERSARY
1946 • 2016

Honored to be voted
the #6 Best Place to
Work in Georgia!

WE HIRE THE PASSIONATE & INSPIRED, THE BEST & THE BRIGHTEST

Founded in 1946, Thomas & Hutton proudly celebrates 70 years! What defines this kind of success? At Thomas & Hutton, it's our people.

Thomas & Hutton offers a thriving work environment guaranteed to drive innovation and desire to better the communities in which we live. Our people grow with endless opportunities working on diverse projects, while enjoying the flexibility and entrepreneurial spirit that's highly encouraged.

Choose more than just a career with Thomas & Hutton as we continue our tradition of success in designing tomorrow. Come design your future with us at careers.thomasandhutton.com.

2016 EVENTS

AUG
26
2016

ACEC GEORGIA GENERAL MEMBERSHIP MEETING

7:30a.m. – 9:00a.m.
Augusta Marriott at the Convention Center
2 10th Street, Augusta, GA 30901

Join ACEC Georgia for networking, breakfast and a keynote address from Augusta Mayor Hardie Davis, Jr. ACEC Georgia's General Membership Meetings are held quarterly around the state and feature industry, business and civic leaders.

Cost: \$35 – ACEC Georgia Members; \$45 – Non-Members

Register at www.acecga.org

AUG
26
2016

2016 ASCE GEORGIA SECTION ANNUAL MEETING AND AWARDS BANQUET

6:00p.m. – 9:00p.m.
The Carlyle House
173 South Peachtree Street
Norcross, GA 30071

The event will feature Keynote Speaker Norma Jean Mattei, ASCE President-Elect, and honor the following Award winners: Civil Engineer of the Year, Young Civil Engineer of the Year, Outstanding Civil Engineering Awards – Small Projects, Outstanding Civil Engineering Award – Large Projects and Outstanding Civil Engineering Award – Natural Environment.

Cost: \$50 – ASCE Member; \$55 – Non-Members (before August 13)

Register at www.ascega.org/ga-asce-awards

AUG
30
2016

THE BASICS OF CONSULTING

12:00p.m. – 1:30p.m.
State Road and Tollway Authority
47 Trinity Avenue, 4th Floor, Atlanta, GA 30334

Join WTS Atlanta for this session on the basics of consulting presented by Pam Scott of Mentor Loft. The event is the third of four sessions in WTS Atlanta's 2016 Professional Development Series.

Cost: \$15 – WTS Atlanta Members; \$30 – Non-Members
(Lunch will be provided)

Learn more at www.wtsinternational.org/atlanta

SEPT
13
2016

2016 ANNUAL MEGA MEETING PLANES, TRAINS & AUTOMOBILES: ATLANTA'S GREATEST TRANSPORTATION CHALLENGES & OPPORTUNITIES

11:00a.m. – 2:00p.m.
Thalia N. Carlos Hellenic Community Center
2500 Clairmont Road NE, Atlanta, GA 30329

Ask almost anyone you meet what the metro Atlanta area's biggest challenges and opportunities are and you'll likely get one answer: transportation. From traffic gridlock to infrastructure to mass transit, it's a topic that affects us all – not to mention the vast pipeline of transportation-related work on the horizon for A/E/C firms. Speakers include Meg Pirkle, P.E., Chief Engineer with the Georgia Department of Transportation (GDOT) and Kofi Smith, Executive Director for Atlanta Airlines Terminal Corporation.

Cost: \$60 – Attendee

Register at www.smpsatl.org

SEPT
14
2016

45TH ANNUAL SAME ATLANTA POST SHRIMP BOIL

4:30 p.m. - 7:30 p.m.

Join SAME Atlanta Post for its premier networking event of the year! Enjoy a traditional low country shrimp boil, networking, music and prizes.

Learn more at www.sameatlantapost.org



2016 GEORGIA MATHCOUNTS GOLF TOURNAMENT

Canongate 1 Golf Club
924 Shaw Road, Sharpsburg, GA 30277

Join the Georgia Society of Professional Engineers (GSPE) and educators from around the state for a day on the golf course. This annual event is held to ensure the continued success of the MathCounts program and raise funds for the MathCounts Endowment. MathCounts is one of the country's largest and most successful education partnerships involving volunteers, educators, students and industry sponsors.

Learn more at www.gspe.org



ITS GEORGIA ANNUAL MEETING AND EXHIBITIONS

Callaway Gardens Lodge and Spa
4500 Southern Pine Drive
Pine Mountain, GA 31822



This conference provides a forum for attendees to learn about new technologies and changing trends in the ITS industry, as well as network with fellow professionals. The conference theme is "ITS Georgia Awakens," which reflects the future that Georgia is embracing to elevate technology solutions in transportation.

Cost: \$360 – ITS Georgia Member; \$535 – Non-Members (before August 4)

Register at www.itsga.org



2016 NEW P.E. RECOGNITION RECEPTION AND DINNER

Georgia Tech Hotel and Conference Center
800 Spring Street NW
Atlanta, GA 30308

Hosted by the Georgia Society of Professional Engineers (GSPE), this program honors new engineers who passed the P.E. exam in Georgia in October 2015 and April 2016. The reception and dinner provide an occasion for seasoned engineers to officially welcome newly licensed engineers into the profession. Becoming a licensed engineer is a tremendous accomplishment and should not go unnoticed; GSPE encourages new professional engineers, their colleagues, family and friend to attend.

Learn more at www.gspe.org



2016 WTS ATLANTA SCHOLARSHIP LUNCHEON

Georgia Aquarium
255 Baker Street NW, Atlanta, GA 30313

Save the date for WTS Atlanta's annual scholarship luncheon! Two undergraduate and two graduate scholarships are presented to female students in the transportation field.

Register at www.wtsinternational.org/atlanta



2016 GEORGIA TRANSPORTATION SUMMIT

The Classic Center
300 North Thomas Street, Athens, GA 30601

Save the date for the largest transportation event in Georgia! A partnership of ACEC Georgia, GDOT, Georgia Transportation Alliance and Georgia Chamber of Commerce, this event provides an entire day focused on transportation in Georgia – from roads and bridges to ports and airports.

Learn more at www.acecga.org

McFarland-Dyer & Associates (MDA) is a multi-disciplinary design firm that offers Landscape Architecture, Civil Engineering, Surveying, Municipal Planning and Construction Administration Services to a diverse group of public and private clients throughout the southeast. We utilize our extensive experience and quality assurance processes to provide timely solutions that solve problems, address needs and exceed expectations - all at a good value.

770.932.6550
www.gomda.net