

# Investing Over \$100 Million In Transportation Improvements That Benefit Our Community

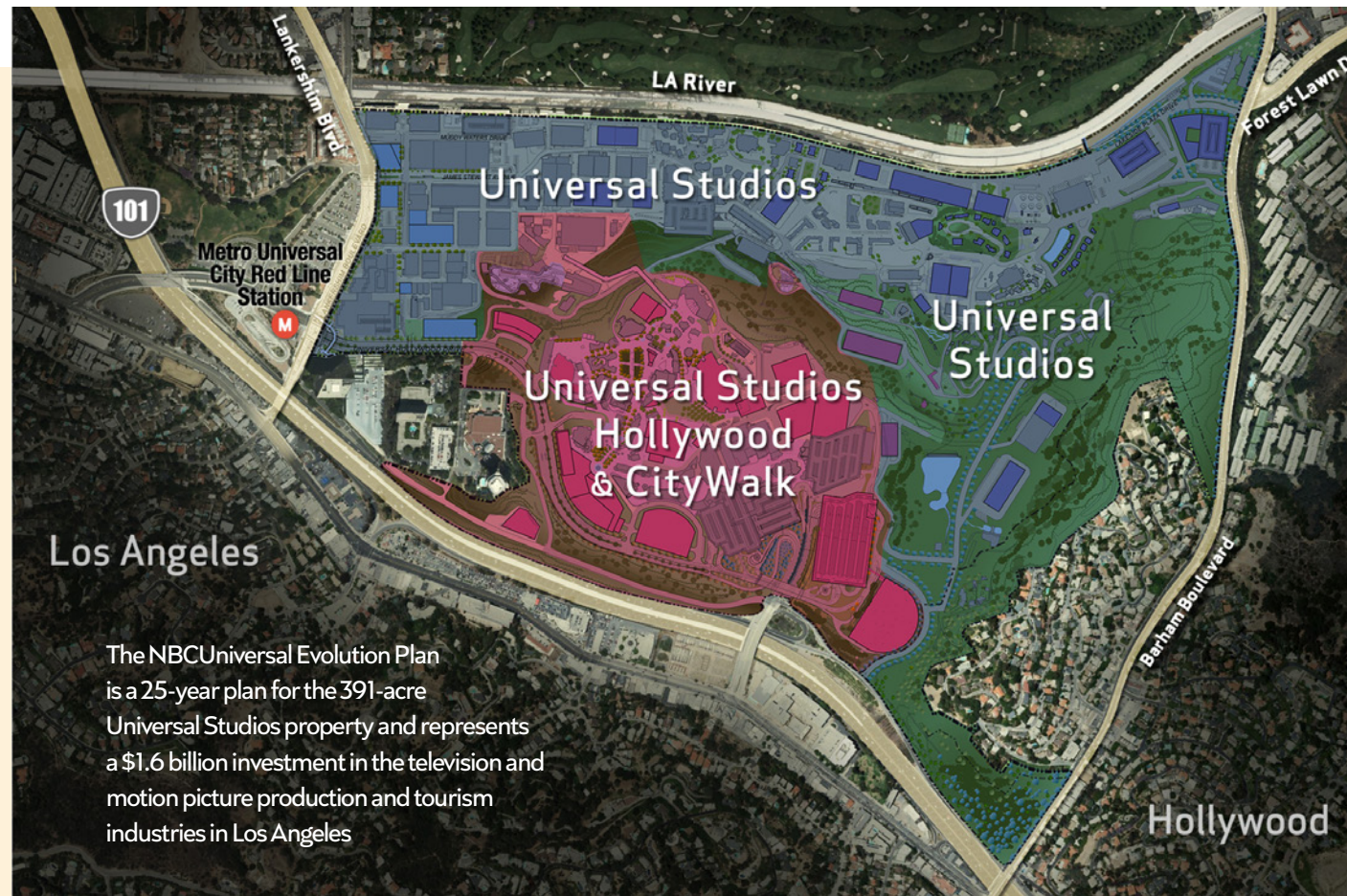


NBCUNIVERSAL  
EVOLUTION PLAN

NBCUniversal

## The NBCUniversal Evolution Plan: The Result of a Seven-Year Public Review and Approval Process:

- More than 150,000 neighbors received a number of mailings about the project, and thousands attended over 200 community meetings and several public hearings over the last decade to help shape this project
- Unprecedented effort to work with local neighbors, Homeowner Associations and Neighborhood Councils to create a plan that works



Los Angeles

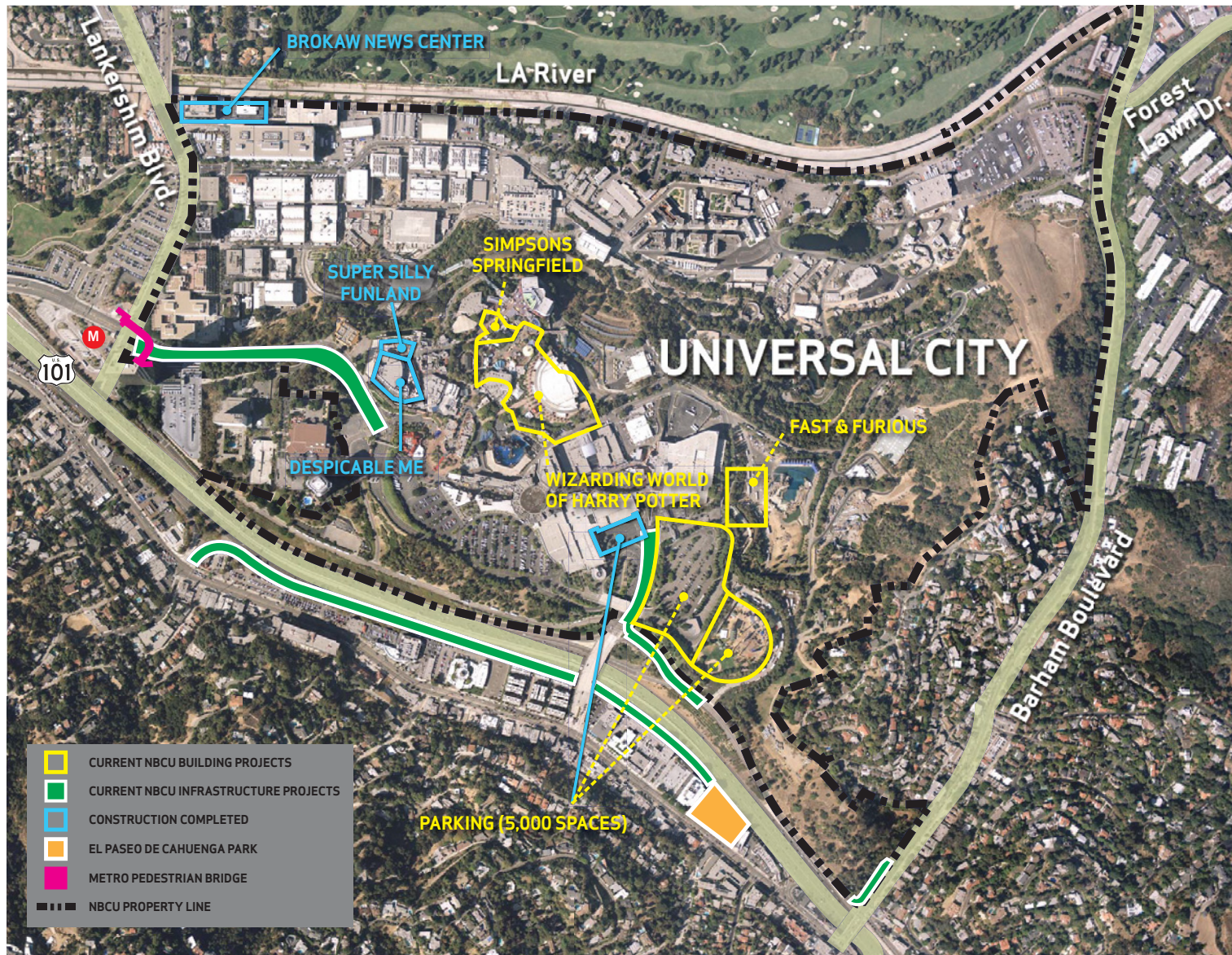
The NBCUniversal Evolution Plan is a 25-year plan for the 391-acre Universal Studios property and represents a \$1.6 billion investment in the television and motion picture production and tourism industries in Los Angeles

Hollywood

The \$100 million traffic improvement package was shaped in partnership with local community members working together to design a plan that protects local neighborhoods and streets from NBCUniversal's growth in the future



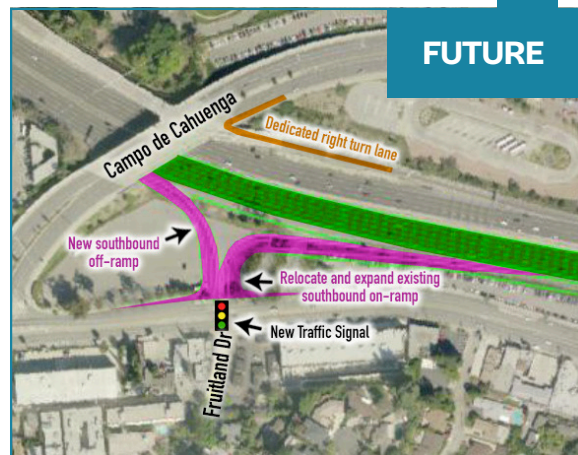
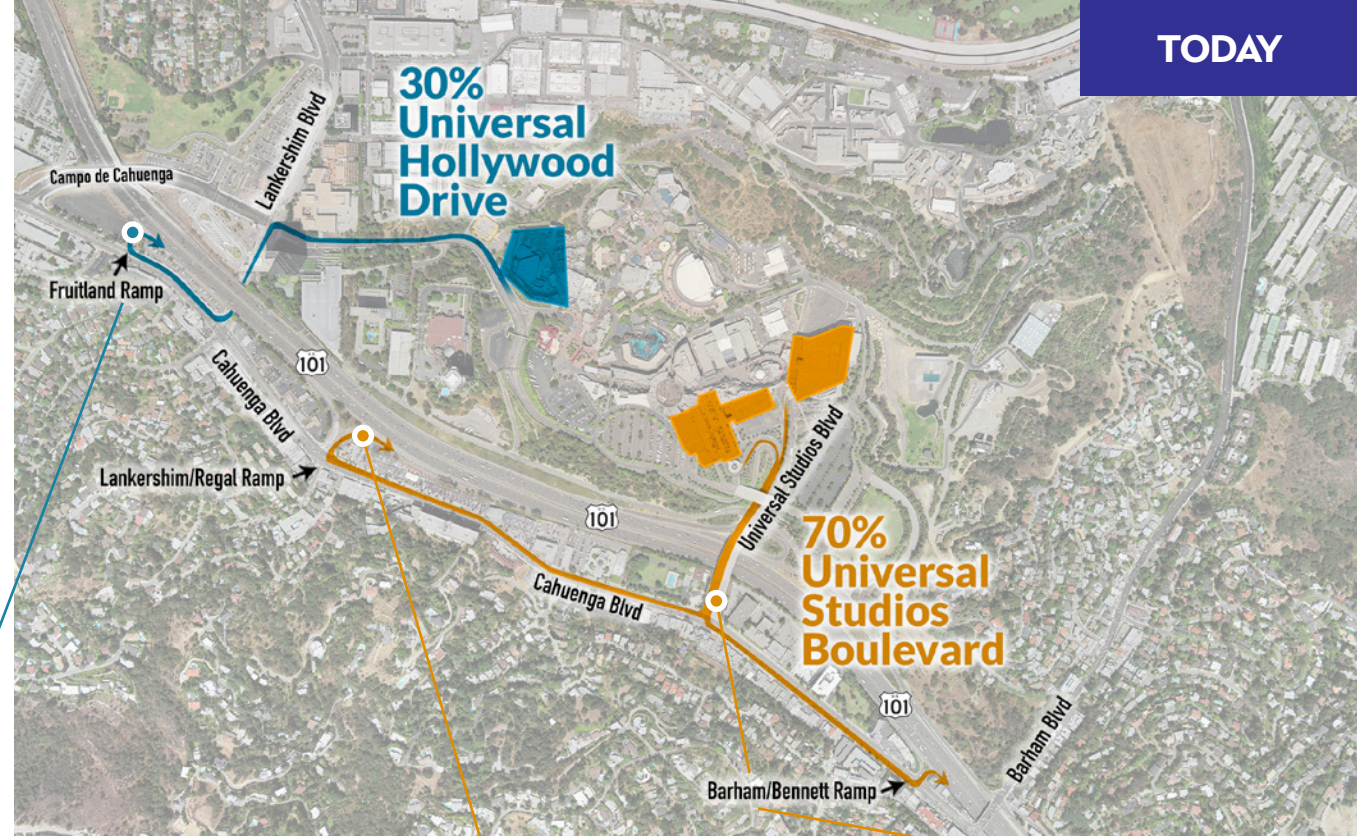
# Projects Completed and Under Construction





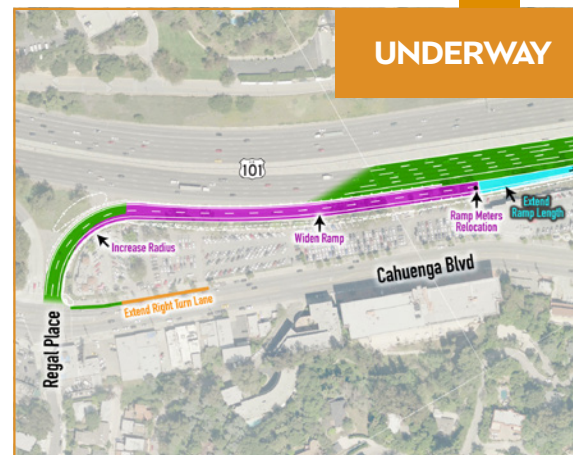
# Critical Improvements Currently Underway

Today, a majority of Universal Studios guests take local streets to access the US 101 freeway. With these improvements local roadways will see a reduction in traffic from the property.



## FUTURE

Fruitland/Campo de Cahuenga – New southbound off-ramp and relocate and expand existing on-ramp. Dedicated right turn lane onto Campo de Cahuenga.



## UNDERWAY

Widened Lankershim/Regal on-ramp, HOV bypass & lane improvements. Extended right turn lane onto the ramp.

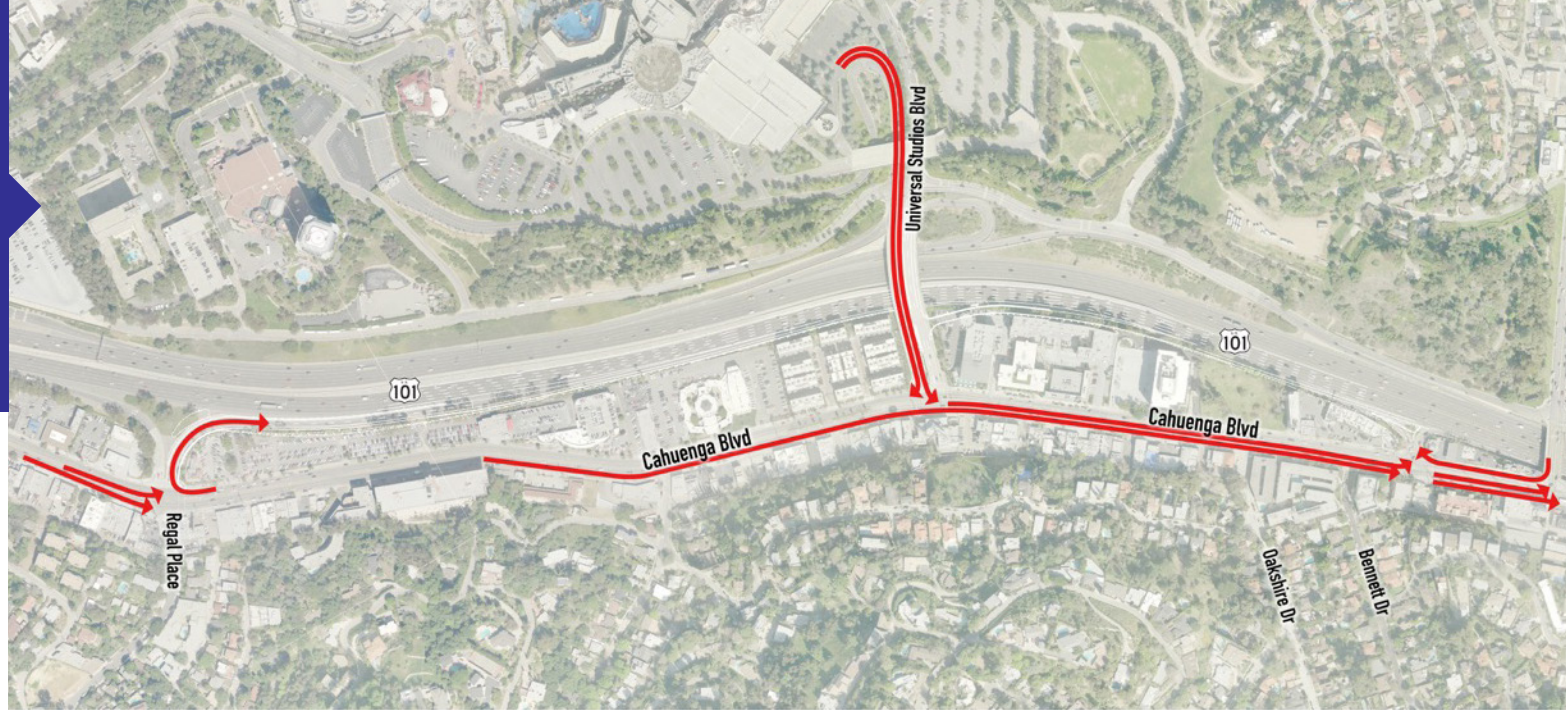


## UNDERWAY

Directly connects 70% of Universal Studios visitors to southbound US 101 and removes 500 vehicles per peak hour from Cahuenga Boulevard.



Length of traffic  
queue **without** the  
new on-ramp



## A New US 101 Southbound On-Ramp Was The Number One Requested Improvement By the Community



Without the new on-ramp, traffic will back up onto local streets

Length of traffic  
queue **with** the  
new on-ramp

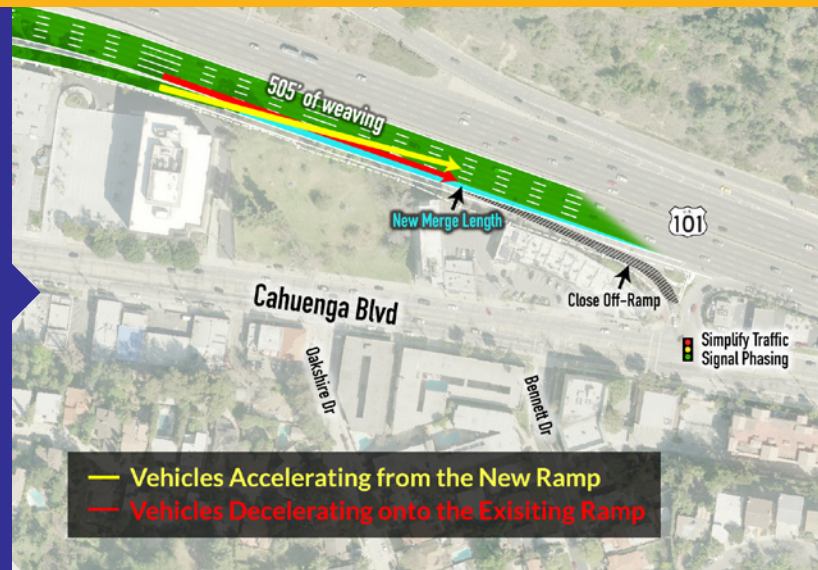




# New US 101 Southbound On-ramp at Universal Studios Boulevard and Closure of the Barham/Bennett Off-ramp Was the Result of Multi-Year Public Review Process



NBCUniversal continues to meet with various homeowner associations, and has agreed to fund a study by a third party engineering firm to review the more than 20 alternatives studied to keep the 101 southbound Barham/Bennett off-ramp open and analyze any additional southbound off-ramp alternatives that can safely co-exist with the new Barham southbound on-ramp currently under construction.



## Caltrans Decision to Close Barham/Bennett Off-Ramp Was Due to Safety Concerns

- Caltrans and NBCUniversal looked at over 20 different design options in an effort to keep the off-ramp open, but in the end, safety was the guiding principle.
- Caltrans determined that the closure of the southbound Barham/ Bennett off-ramp was necessary due to fact that there is only 505 feet for weaving between the new on-ramp and the existing Barham/ Bennett off-ramp. Caltrans' minimum requirement to meet safety standards is 1,500 feet.
- The existing Barham/Bennett off-ramp is substandard and has a higher than average accident rate today.
- Caltrans provided two notices in the LA Times and held a public meeting on July 8th, 2014 to answer questions.
- The exiting Barham/Bennett southbound on-ramp and the northbound Barham ramps will remain open.

# Improving Access to Universal Studios by Implementing Key Corridor & Roadway Improvements



The new Metro pedestrian bridge over Lankershim Boulevard will connect 1 million transit users annually to Universal Studios.



Two additional lanes on Universal Studios Boulevard and widening at W.C. Fields Drive.



Three additional lanes on Universal Hollywood Drive.





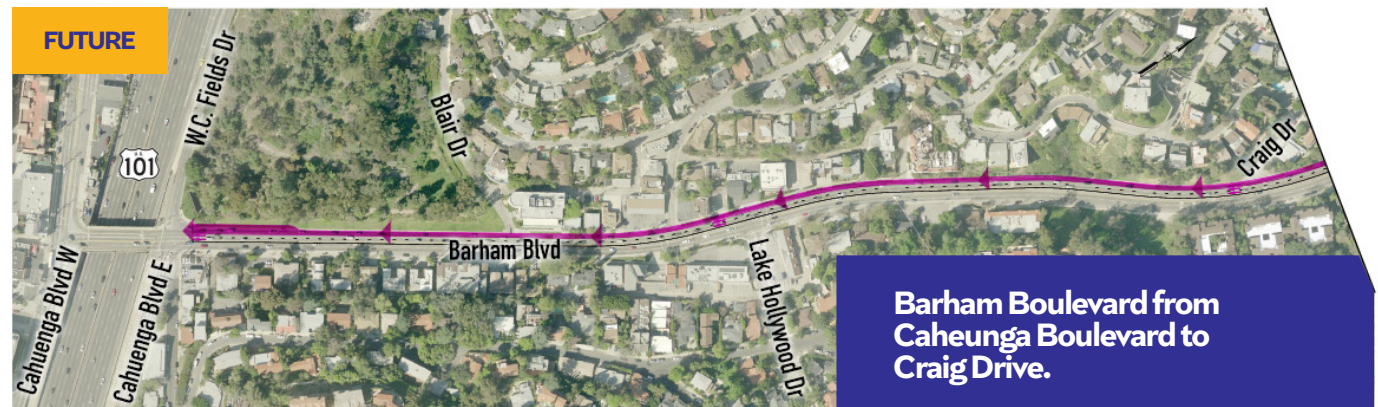
**Barham Boulevard - New right-hand turn lane to W.C. Fields Drive.**



**New turn lanes at Barham Boulevard / Cahuenga Boulevard East and West.**

## Improving Access to Universal Studios by Implementing Key Corridor & Roadway Improvements

By using a portion of NBCUniversal's property and lane re-striping, a new southbound lane on Barham Boulevard will be added from Forest Lawn Drive to W.C. Fields Drive



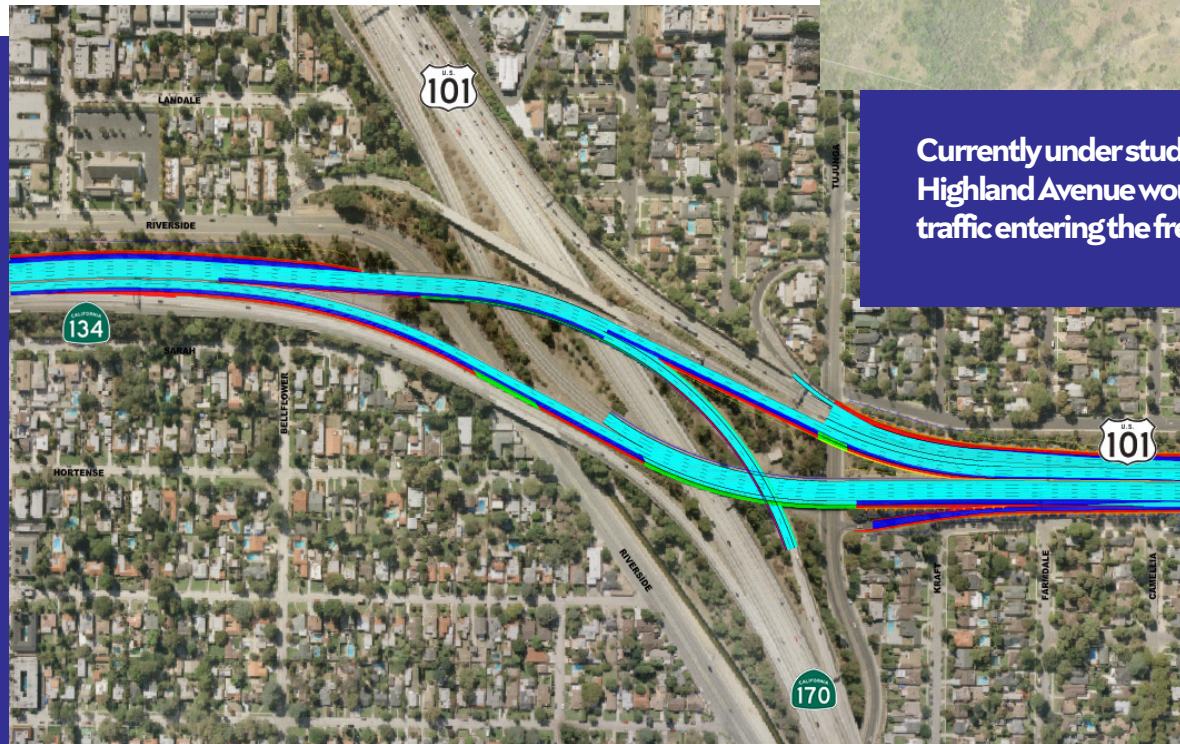
**Barham Boulevard from Cahuenga Boulevard to Craig Drive.**



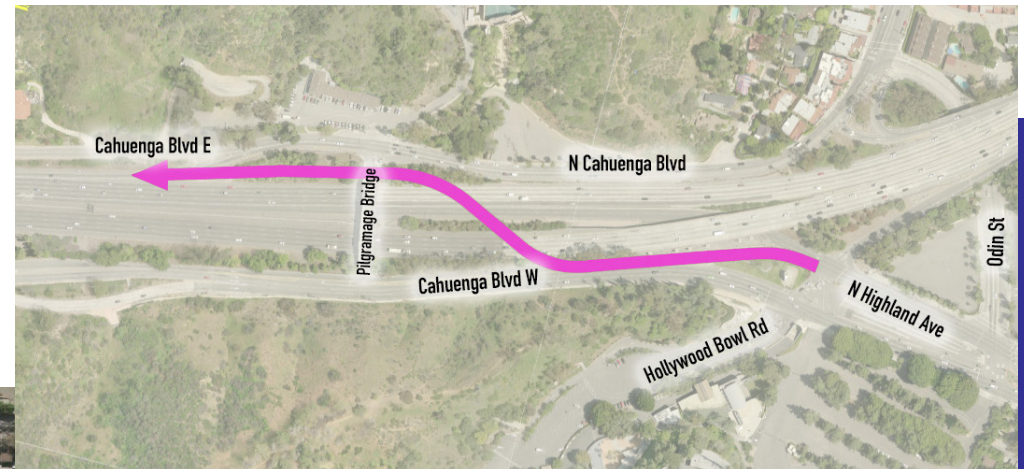
**Barham Boulevard from S. Coyote Canyon Rd. to Forest Lawn Drive.**



## Working with Caltrans to Improve Key Local Freeways



NBCUniversal has worked with Caltrans on plans to improve the US 101/ SR 134/SR 170 interchange that include the addition of two new lanes in both directions using land between the two freeways.



Currently under study, a new northbound fly-over on-ramp at Highland Avenue would improve the transition onto US 101 North with traffic entering the freeway on the right side instead of the left lane.

## Additional Transportation Improvements Coming in the Future

- Improving more than 120 intersections
- Upgrading Lankershim Boulevard and Forest Lawn Drive
- Investing in transit improvements and programs to encourage employees and theme park guest to take transit, including shuttle service to:
  - Lankershim Boulevard Metro Station
  - Burbank's Metrolink Station
  - Universal Studios Main Entrance
  - Lakeside Drive Entrance of the studio
- Implementing \$1.6 million in neighborhood protection and beautification programs





NBCUNIVERSAL  
EVOLUTION PLAN

**NBCUniversal**

For More Information or Questions Please Email  
[info@nbcuniversalevolution.com](mailto:info@nbcuniversalevolution.com) or call 818-503-2417