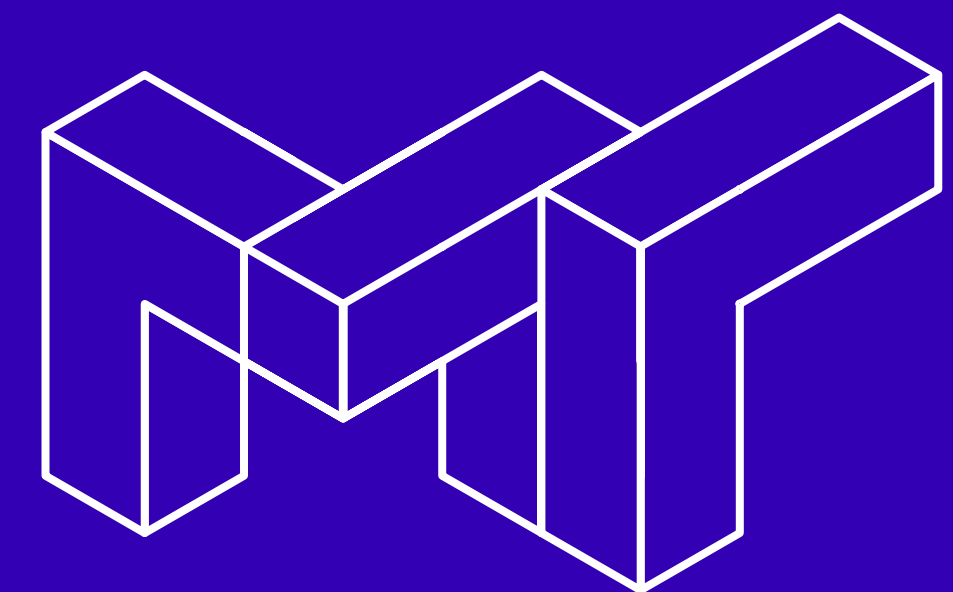


Space only exhibition stand options

# made ready 2021

BY **human**built



Every Experience Matters.

Welcome to made ready

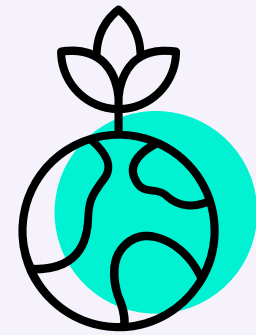
# made with you in mind

Our exhibition stands are Made Ready with you in mind. Whether this is your first time or your centenary, here are some reasons to get Made Ready:

- Perfect for any stand size
- Great for upgrading from shell scheme
- Easy for first-time exhibitors
- Quick for experienced exhibitors
- Simple to use across multiple events
- Hybrid options add even more possibilities

# All this and more!

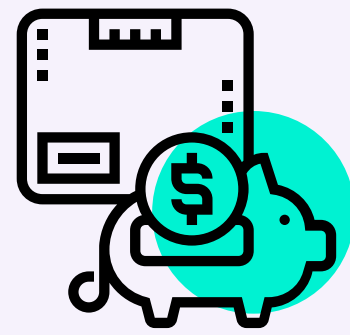
made ready really does tick the boxes



## Sustainable

### Protect our planet

The best part about a Made Ready stand is that it leaves a footprint of almost zero. Every bar, graphic and fitting is either reused or recycled after you're done – nothing goes to waste or landfill.



## Affordable

### Quality meets value

Your essentials for exhibiting are all bundled into one, affordable package. The stand, the graphics, the furniture, the lights – everything. So, let your budget breathe a little sigh of relief.



## Effortless

### Pick, customise, send

Exhibiting has never been easier. All our stands are Made Ready to go – you just select a style, add a few furnishings then package your print-ready artwork and send it our way. No drama required.



## & Safe

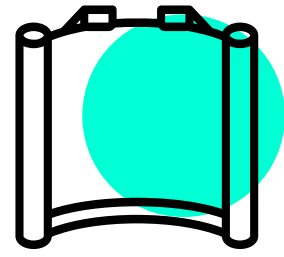
### Putting people first

Keeping you and your visitors safe is our top priority. All of our Made Ready exhibition stands come treated with our Surface Safe technology, which inhibits the growth of microbes and bacteria.



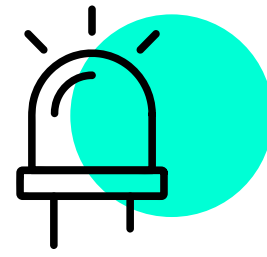
# So much content

fear not, we'll look after you every step of the way



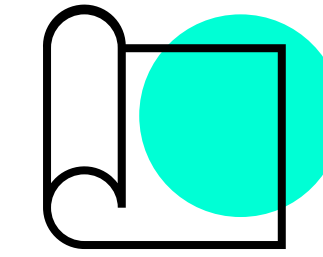
## The stand

Fully built and ready to use featuring tensioned wall graphics. All you need to do is arrive and do your thing. We'll supply you with easy to follow templates for creating your artwork, or you can make use of our design team to do it for you. Simple.



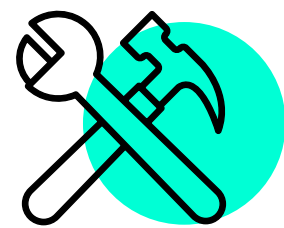
## Lights

With energy efficient LEDs, these light fittings also come with a dedicated power supply to help you keep the costs down. You don't need to do anything, they'll be on when you arrive and they'll turn off when you leave.



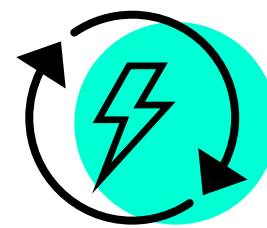
## Carpet

Cut to measure and fully fitted in a choice of colours, your carpet will also come with a protective polythene sheet on to keep it clean during the busy build-up period. Once build-up is over, we'll come and take the poly for recycling, leaving you with a clean stage to work with.



## Build

Not just the build, but the delivery, post-show dismantle and sustainable recycling or reuse of features as well. All you need to do is arrive, use your space, and leave. It'll be ready for the opening day and we'll take it all down when you leave.

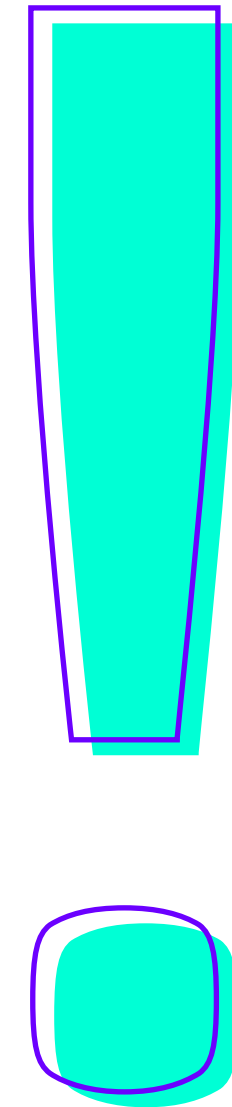
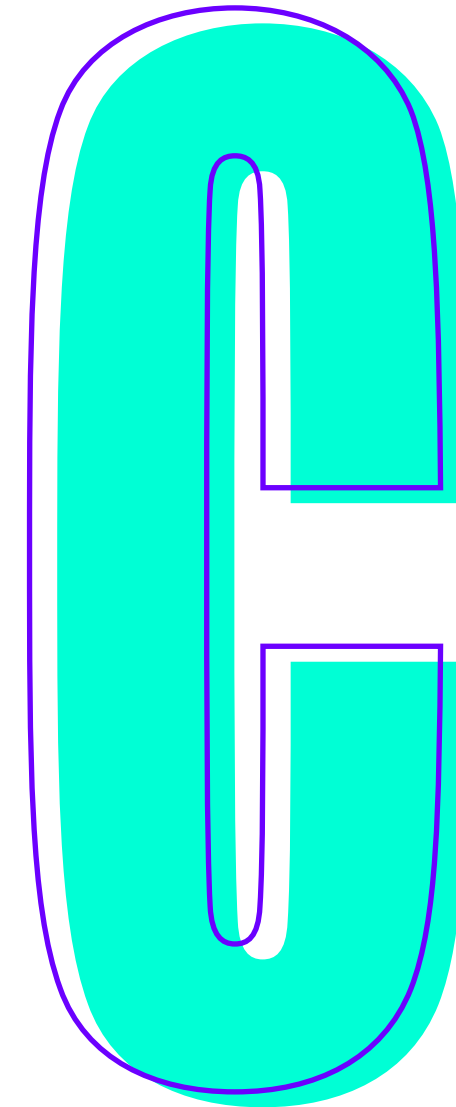
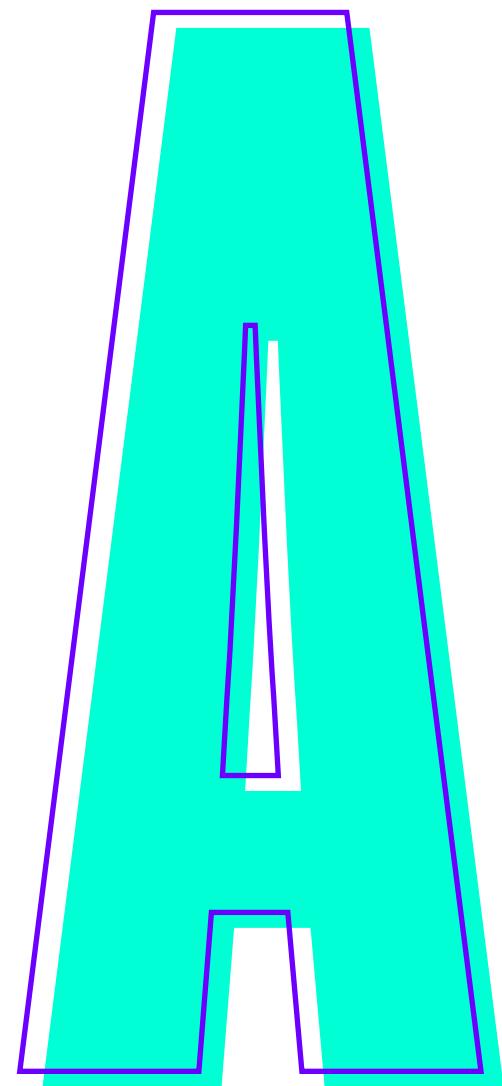


## Power

Everyone needs a power supply, whether you're using it to keep a TV screen on, charging a phone or just keeping a laptop on. It'll come fully tested and ready to use - if you need a supply for something with a high power consumption (1000w+) we can help with that, too.



# It's as easy as...



## Pick

### pick a package

Choose a stand that meets your exhibiting needs. We've got stand layouts for every type of occasion - from meeting spaces to product display areas and everything in between.

## Customise

### customise your stand

Add seating, display areas and just about anything else you need to make your space unique to you with our range of enhancement pieces for hire.

## Send

### send your artwork

Sending us your packaged artwork files is all that's left for you to do. If you need help creating your artwork, we have a team of designers who can amend or create it for you!\*

*\*hourly charges apply.*



# Package 1

- 2 open sides
- Large wall display areas
- Corner storage area



## Package 2a

- 3 open sides
- Angular foreground display
- Hidden storage area



## Package 2b

- 3 open sides
- Open & welcoming
- Built-in storage area





## Package 3

- 2 open sides
- Uninterrupted wall displays
- Open floor area



# Package 4

- 3 open sides
- Large store
- Extra tower height



## Package 5

- 3 open sides
- Wide feature wall



## Package 6

- 1 open side
- Wide feature wall
- More private space



## Package 7

- 2 open sides
- Extra size store room
- Curved feature wall
- End arch and recess



## Package 8

- 4 open sides
- Extra size store room
- Extra tower height



## Package 9

- 4 open sides
- Large store room
- Feature archway



## Package 10a

- 4 open sides
- Bridging overhead structures
- Standalone feature monolith





## Package 10b

- 4 open sides
- Bridging overhead structures
- Extra tower height
- Central showcase



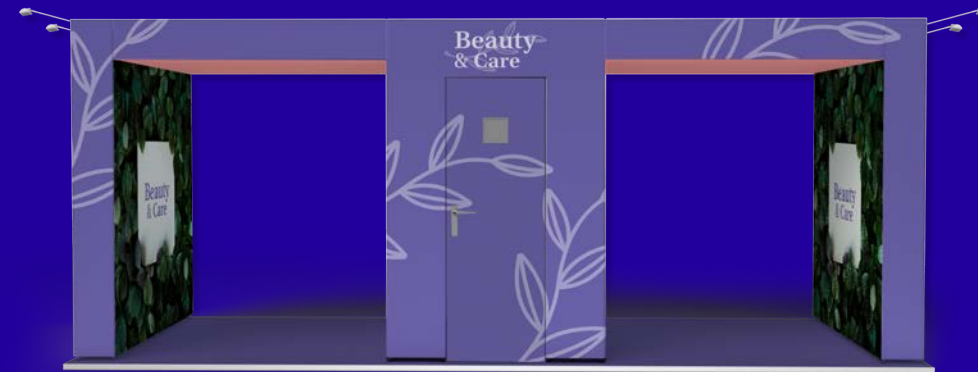
# Package 11

- 4 open sides
- Maximum backdrop space
- 4 partner or product areas



## Package 12

- 4 open sides
- Large store room
- Two extended arch features



# Package 13

- 4 open sides
- Maximum wall collateral
- Intersecting arch features



# Enhance

your stand

Enhance your stand to your heart's content without the stress of having to arrange delivery and removal yourself.

## Why not try adding:

- Custom colour furniture
- AV screens
- Overhead banners
- Fully branded surface safe counters
- And more.

Speak to our team to see our full range.



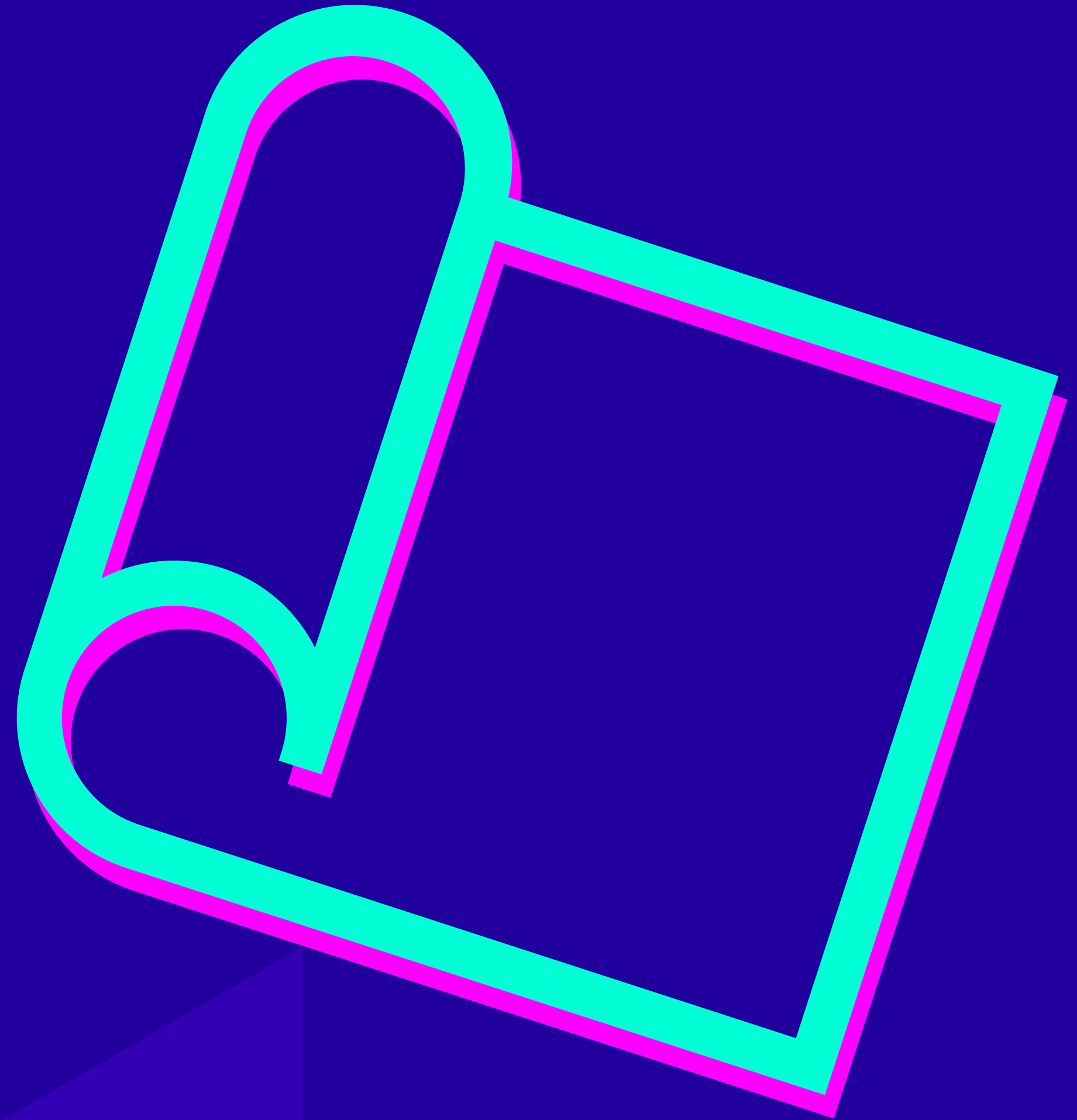
# Upgrade

your floor covering

A great stand needs a great carpet to finish the look.

Any of these carpet colours are included in your stand package. All you need to do is choose a colour that suits you and we'll take care of the installation and recycling post-event for you. You can also upgrade to a custom or printed carpet, just let us know what you'd like!

**Speak to our team to see our [full range](#).**

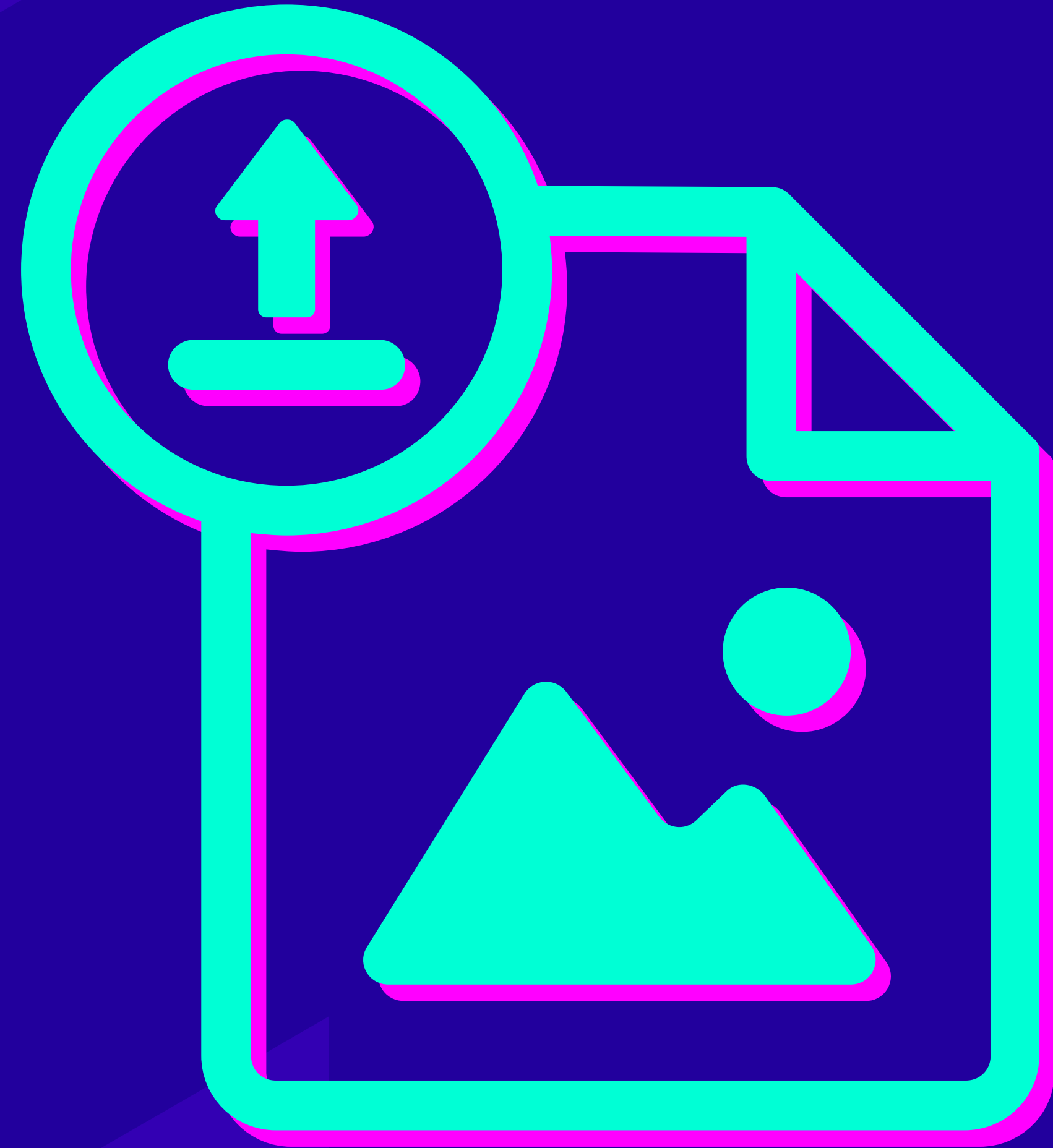


# Send

your artwork

Getting your imagery, branding and combined artwork files right can take some time, which is why we'll give you a personalised production timeline for you to work to. Once you're done, just package up your files and send them to your designated project manager – we'll take care of the rest.

- Reasonable hourly rates
- Send direct to production after sign-off
- No need to find large scale artwork specialists
- Exhibition specialist advice reasonable, too!



# Surface Safe

A Made Ready stand is a clean slate, ready for any brand.

Just like every other surface we print on to, these fully-custom printed pieces of furniture and architecture feature our Surface Safe technology – which was designed to inhibit the growth of microbes and bacteria.

Fully bespoke to you with your company branding, these pieces are for you to keep and reuse at other events or you can just leave them for us and we'll recycle them for you.

Our design studio is available for you to use and our hourly charges are pretty reasonable, too!

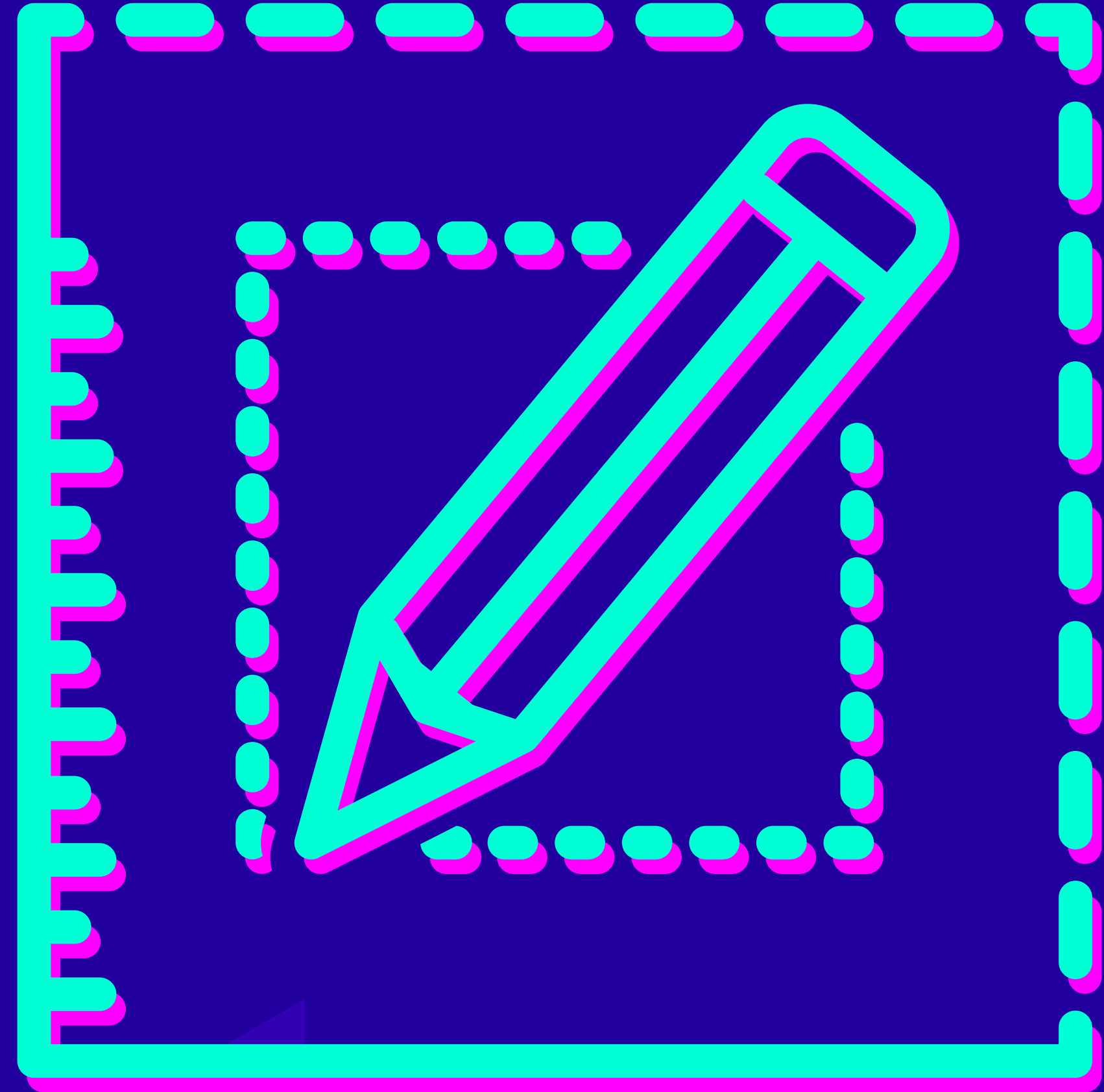




# Go bespoke

Even though our Made Ready designs have been created to offer a wide range of standard package solutions, you might want something specific for a certain event.

Never fear! Using the same core principles, we can go off-road and create a customised Made Ready stand that's perfect for discerning tastes. Just talk to us about the exact requirements and we'll get cracking.

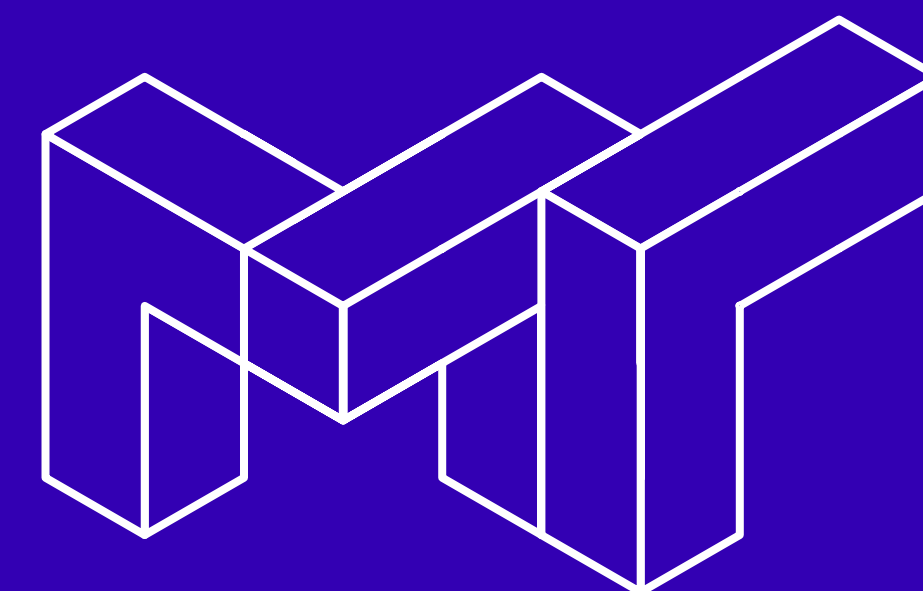


# fancy a chat?

Get in touch with us today

Andy Hickinbotham  
Sales Director

T: +44 (0) 7760 172 326  
E: [Andy.Hickinbotham@wearehumanbuilt.com](mailto:Andy.Hickinbotham@wearehumanbuilt.com)



Every Experience Matters.