




# Exploring Sci-Fi in German Expressionism: “The Influence of *Metropolis* in Modern Films & Pop Culture Music Videos”

A background image of a starry night sky. The top half is a dark blue field filled with numerous small, bright stars. A single, very bright star in the upper left quadrant has a prominent four-pointed diffraction pattern. The bottom half of the image features a colorful nebula with shades of purple, magenta, and blue, interspersed with stars.

How does the 1927 movie *Metropolis*, a pioneering science fiction film of German Expressionism, influence modern day films and pop culture music videos?



Metropolis = \*\$200,000,000 Budget  
(5mil Reichsmark)

Transformers 3 = \$195,000,000

Spider Man 3 = \$258,000,000

Avatar = \$280,000,000

# RESEARCH OUTLINE

German Expressionism

Art Deco Movement

Metropolis

Events between 1925 – 1927

Karl Marx & Friedrich Engels (writers)

Fritz Lang

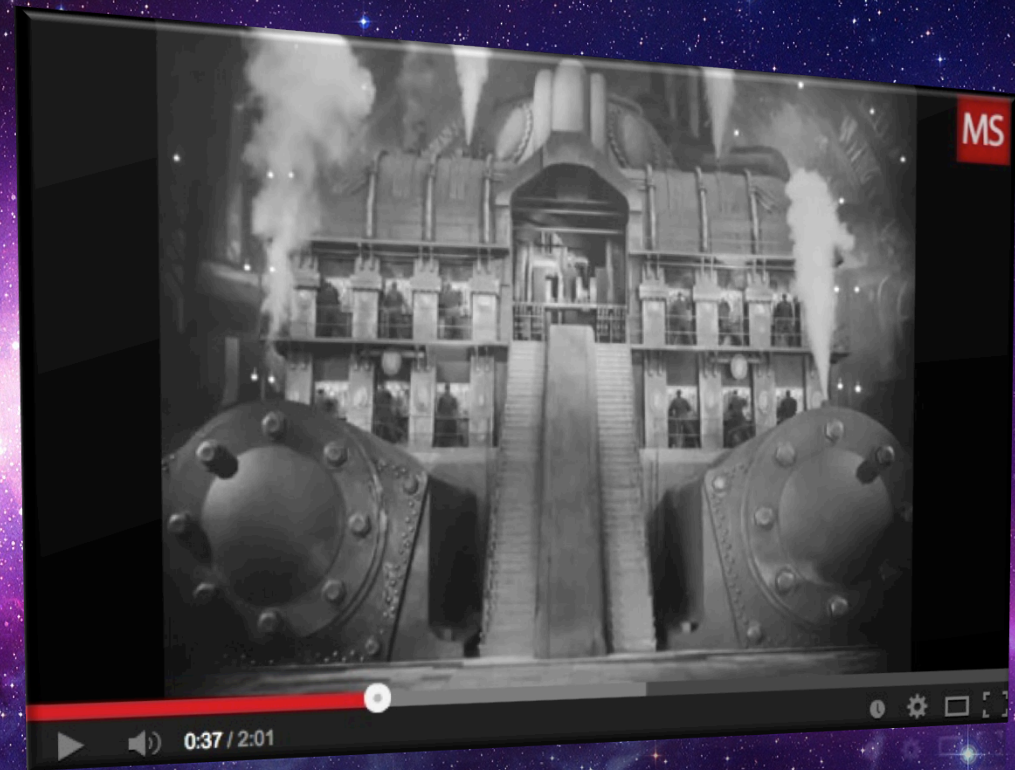
Babelsberg Studio

Ridley Scott – *Blade Runner*

Luc Besson – *The Fifth Element*

Janelle Monae– “Many Moons”

Kylie Minogue/Beyonce – Maschinenmensch  
(German for human machine)



<http://www.youtube.com/watch?v=ObM0drwTshA>

## BLADE RUNNER (1982)

Deckard, a blade runner, has to track down and terminate 4 replicants who hijacked a ship in space and have returned to Earth seeking their maker.

<http://www.youtube.com/watch?v=iYhJ7Mf2Oxs>

# THE FIFTH ELEMENT (1997)

In the colorful future, a cab driver unwittingly becomes the central figure in the search for a legendary cosmic weapon to keep Evil and Mr Zorg at bay.

<http://www.youtube.com/watch?v=VkX7dHjL-aY>



# JANELLE MONAE

Album: Metropolis: Suite I (The Chase)  
Music Video: Many Moons

<http://www.youtube.com/watch?v=LHgbzNHVg0c>



# Kylie Minogue vs. Beyonce

Concept: *Maschinenmensch*



<http://www.youtube.com/watch?v=16VO9rK3JEU>

# LITERATURE

[http://books.google.com/books?id=KE0XEBs2keQC&pg=PA182&lpg=PA182&dq=blade+runner+working+class&source=bl&ots=vnWAXO0z17&sig=DsFZOwAsLyLRdYOxwLrOiWwVuNA&hl=en&sa=X&ei=gUwOU\\_7SJ8TKrgGXu4CwBA&ved=0CCQQ6AEwAA#v=onepage&q=blade%20runner%20working%20class&f=false](http://books.google.com/books?id=KE0XEBs2keQC&pg=PA182&lpg=PA182&dq=blade+runner+working+class&source=bl&ots=vnWAXO0z17&sig=DsFZOwAsLyLRdYOxwLrOiWwVuNA&hl=en&sa=X&ei=gUwOU_7SJ8TKrgGXu4CwBA&ved=0CCQQ6AEwAA#v=onepage&q=blade%20runner%20working%20class&f=false)

## “Metropolis”

Thomas Elsaesser  
British Film Institute, Nov 26, 2000

“Fritz Lang's Metropolis: Cinematic Visions of Technology and Fear”  
Edited by Michael Minden, Holger Bachmann

Bloch, Robert. “**The Master and Metropolis.**” *Omni's Screen Flights/Screen Fantasies: The Future According to Science Fiction Cinema.* Garden City, New York: DoubleDay 1984.

<http://www.questia.com/library/journal/1P3-2799898791/apocalyptic-imagery-in-fritz-lang-s-metropolis>

## Finding the Connection:

Social Realism – Art that reflects the everyday conditions of the working classes and the poor, and the social structures that maintain these conditions

Historical Perspective – Metropolis

Present Day – Janelle Monae/Blade Runner