

News Editor

Kevin Kunzmann
news@thewhitonline.com

NEWS

Thursday, October 17, 2013



Friday:
High: 68
Low: 47



Saturday:
High: 66
Low: 47



Sunday:
High: 64
Low: 43



Monday:
High: 61
Low: 44



Tuesday:
High: 64
Low: 46



Wednesday:
High: 61
Low: 45



Thursday:
High: 57
Low: 38

THE WORLD THIS WEEK

Senate leaders announce shutdown/debt limit deal

WASHINGTON — Senate leaders Wednesday jointly announced an agreement on a bipartisan proposal to raise the nation's debt limit and end the partial shutdown of the federal government. Congress approved the package, which would prevent an economically dangerous U.S. default.

N.J. Gov. Christie, challenger Buono raise intensity in debate

TRENTON, N.J. — New Jersey Gov. Chris Christie and his Democratic challenger, Barbara Buono, went at each other with renewed vigor in their second debate on Tuesday night, clashing over property-tax relief and same-sex marriage as the campaign entered its critical final stage.

N.J. same-sex marriage appeal goes to state Supreme Court

PHILADELPHIA — Now it's up to the state Supreme Court to decide whether New Jersey starts permitting same-sex marriage next week. On Tuesday, the lawyers for the couples and their children who brought the lawsuit "Garden State Equality v. Dow" filed a brief opposing the state's effort to halt the marriages.

***All articles
shown are
courtesy of
MCTCampus.com**

Rowan-Camden campus to have own academic building

Devon Marshall
Staff Writer

The Rowan University Camden campus is parting with its shared building with Camden County College and plans to open the doors of its new Rowan-Camden Academic Building at 129 N. Broadway St. in Camden this spring.

Complete with faculty offices, classrooms, conference rooms, activity spaces and a lounge for its students, Rowan-Camden will have an academic building to call it's own.

On the heels of Rowan receiving \$117 million from the New Jersey Building Our Future Bond Act, \$17.6 million of that money is reserved for Rowan-Camden's campus.

The second floor will accommodate offices for the Assistant Provost

and Dean Dr. Tyrone McCombs as well as the Associate Dean of Student Life Dr. Donovan McCargo. Faculty Advising and University Advising Center Services, Educational Opportunity Fund, Financial Aid and Student Activities will also have offices on the second floor.

McCombs called these changes "necessary."

"One of the main reasons for expansion is to expand the academic programs and add additional majors specific to Rowan-Camden," McCombs said. "We are going to add new majors as the university plans for student growth. Camden is a part of that growth plan."

These additional majors will be centered around a trisection of Rowan-Camden, the new College of Health Sciences and the Cooper

Medical Center.

"One of the things in the future are undergraduate links with the new College of Health Sciences and Cooper Medical Center," McCombs said. "Linking all the Rowan entities together is Rowan's initiative for the campus."

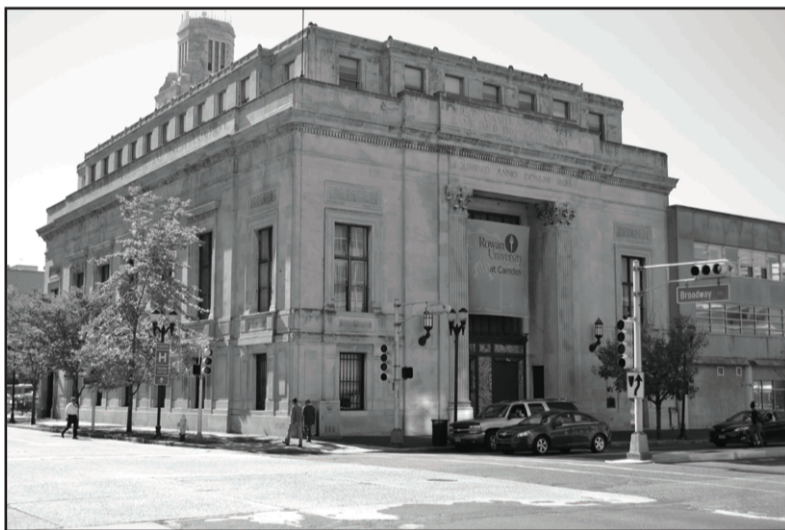
This growth plan that is underway in Rowan-Camden is going to free up its capacity for an expected increase of total student enrollment, in which Rowan-Camden's goal is 1,200 students, McCombs said.

Another part of the growth plan for Rowan-Camden is the revamping of the Camden First National Bank and Trust Building, which is in its second phase as it will suit Rowan-Camden's needs as a "multipurpose center," McCombs said. The National First Bank and Trust Building will house a cafeteria, offices for clubs and more spaces for student activity. McCombs said this building "gives [the students] more freedom for activities and events."

The plans for the First National Bank and Trust Building are still being discussed by the administration and the projected time of completion for the building is set for some time over the next two years.

Phase two of construction begins in the spring, alongside the opening of the Rowan-Camden Academic Building.

For comments/questions about this story, email news@thewhitonline.com or tweet @thewhitnews.



Rowan-Camden's newest home will be the renovated bank at 129 N. Broadway Street in Camden. -Staff photo/Kevin Kunzmann

Polls

Continued from Pg. 1

knew were voting.

"I heard about the election in the news," Jackson said. "Most people know it's in October."

Another issue of concern for some voters was why Rowan University was open during the special election. Rich Hoffman, a freshman law and justice major, said that the university being open did not make sense.

"I'm so surprised," Hoff-

man said. "Even though it's not a normal election, it's a state university."

Joe Cardona, vice president for University Relations, said that the university has the final say on when the school closes, but that normally the state recommends when that should happen. He believed that keeping the school open would not affect student turnout.

"Closing the school on election day doesn't mean they will vote," Cardona said.

Cardona said that many stu-

dents live far away and can't drive home to vote but that students who wanted to vote also had the option to use absentee ballots.

On Nov. 5, Glassboro residents will get the chance to vote again. In the race for governor, Christie holds a 59 percent lead compared to 35 percent for his Democrat challenger Barbara Buono, according to an Oct. 15 Monmouth University poll.

For comments/questions about this story, email news@thewhitonline.com or tweet @thewhitnews.

Correction:

Connor Bryson took the Rowan Women's soccer photo on Pg. 16.

***The Whit strives to maintain a value of professional and precise journalism. If there is an error of note in any issue of The Whit, please inform us by email at editor@thewhitonline.com.**

Available only on TheWhitOnline.com

Darryl Saull reports on Rowan Public Safety and Glassboro Police's planned jointed patrol efforts for Homecoming Weekend. Also: Glassboro police reported an armed suspect fleeing an off-campus party.

Words of the week

solipsism

SOL-ip-siz-uhm
noun;

the philosophical theory that only the self exists, or can be proved to exist.

trepan

trih-PAN
noun;

a person who ensnares or entraps others.

promulgate

PROM-uhl-geyt
verb;

to make known by open declaration; publish; proclaim formally or put into operation.

snollygoster

SNOL-ee-gos-ter
noun;

a clever, unscrupulous person.

annulate

AN-yuh-lit
adjective;

having rings or ringlike bands.

obverse

OB-vurs
noun;

the side of a coin, medal, flag, etc., that bears the principal design.

**All words from
Dictionary.com**