

Ask the expert: There are so many different types of jeans, how do I know which one to choose?



Levi's

80s Balloon Leg Jeans, £100, JL&P



Whistles

High Waist Barrel Leg Jeans, Denim, £95, JL&P



AND/OR

Sierra High Rise Straight Jeans, £89, JL&P

For a long time, skinny jeans have been the go-to style, but recently there's been a move away from the old favourite and lots of brands are selling different shapes like flared, balloon, mom etc... Many of us also have other styles in our wardrobe but we're not sure how to wear them. When experimenting with new shapes, it's important to know which ones best suit your body shape and complement your existing wardrobe, to get the most out of them. Here are my favourite picks for SS20...



1 The Levi's Balloon Leg Jeans and Whistles Barrel Leg Jeans are great for people who are feeling inspired by the current 80s revival, with the wide leg and high waist. These are great for accentuating your waist – tuck in a simple T-shirt or chunky knit, and wear casually with trainers.

warmer months, the Mint Velvet Dakota jeans in Ecru are a traditional mid-rise, which is great for people whose bottom half is slimmer than their top half. Wear them with a loose, floaty blouse to continue the boho look throughout your outfit.

2 For those who have trouble finding a perfect pair of jeans to suit their curves, the And/Or Sierra Straight jeans work well as the elastane in the denim gives them a good amount of stretch, whilst the slim-straight fit highlights your legs. You can wear these with just about anything – dress up with a sparkly top and leather jacket, or dress down with a sweatshirt. If you prefer a lighter colour of denim for the

3 Add a statement colour to your denim wardrobe with NYDJ's Sheri Slim Jeans in Big Pink or John Lewis & Partners Straight Leg Jeans in Khaki. These eye-catching jeans are perfect for spring and summer, to be worn with a classic white shirt or contrasted with a colourful blouse – just team them with neutrals if you're unsure! Because they're high-rise, they're great for creating a waist if yours isn't well defined.



NYDJ

Sheri Slim Ankle Jeans, Big Pink, £139.95, JL&P



Mint Velvet

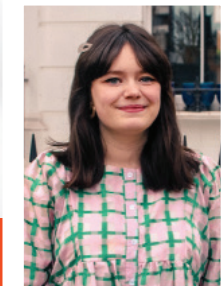
Dakota Ecru Boyfriend Jeans, Neutral, £69, JL&P



JL&P

Straight Leg Jeans, Khaki, £59, JL&P

PHOTOS: JL&P



'For those who have trouble finding a perfect pair of jeans to suit their curves, the And/Or Sierra Straight jeans work well as the elastane in the denim gives them a good amount of stretch'

Ciara Loane, Personal Stylist, JL&P Stratford City