

Bethel defeats New Milford

BY JASON TUREK
Sports Reporter

The New Milford football team fell to a 1-5 record Friday after suffering a 25-7 defeat by Bethel.

Bethel backup quarterback Randy Lienhardt, who replaced starter Vinny Cosentino, out with a concussion, led his team to its second straight victory.

"Lienhardt and Adam Pratt took snaps during the week," said Bethel head coach Gus

Later in the quarter, Matt Wogksch intercepted a pass from New Milford quarterback Kevin Oberg.

The next play, Lienhardt completed a 30-yard pass to wide receiver Justin Curtis to the New Milford 14. Three plays later, Kostek would score his second touchdown of the game with a 4-yard run to make the score 13-0.

Lindine was happy with Lienhardt's performance.

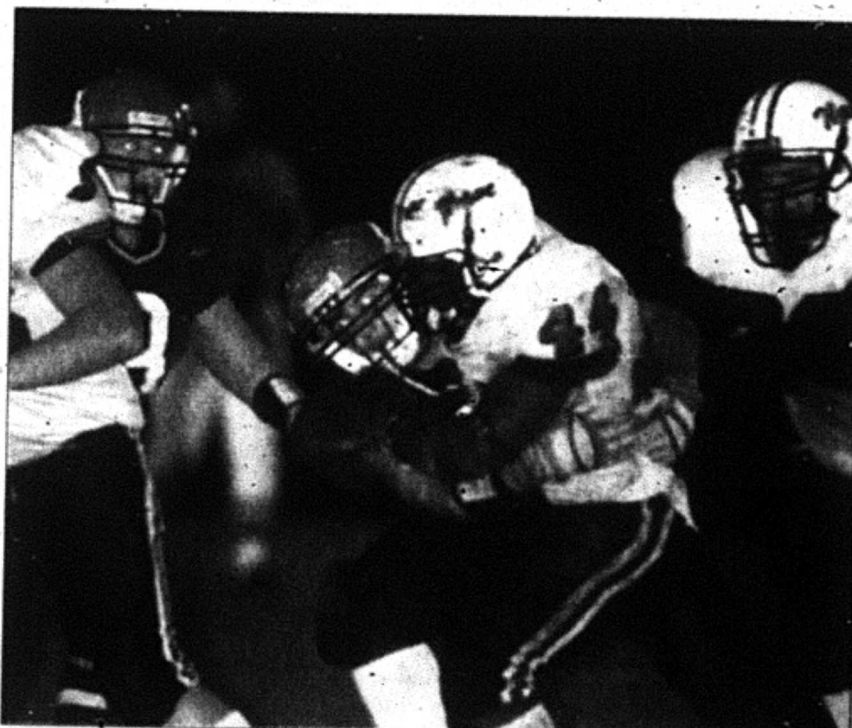
"He played very well," the coach said. "He showed great composure and made really good decisions out there."

On the first play of the second half, running back Manny Cambra broke two tackles and ran down the sideline for a 71-yard touchdown to make the score 19-0.

New Milford would come back on its next possession with a six-play drive covering 49 yards, ending with a 12-yard touchdown run by Pat Hendricks, which was the only score New Milford could muster.

"Our defensive line played very well," said Lindine. "They put pressure on New Milford and forced some tough throws by the quarterback."

In the fourth quarter, Ryan Wolf intercepted Oberg's pass at the New Milford 19. Running



Photograph by Laurie Gaboradi

A Bethel player tries to take down New Milford's C.J. Creighton.

back Mike Anderson scored on a 13-yard run untouched, giving Bethel a 25-7 lead.

Bethel had 262 yards on the ground led by Cambra, who had 93 yards on just six carries.

Anthony Kostek had 62 yards on 15 carries, Mike Anderson had 77 yards on 17 carries, and Matt Wogksch had 15 yards on three carries. Justin Curtis led the passing attack with 51 yards receiving.

"Our offensive line had a

great game," said Lindine. "They made holes for our runners and played tough the entire game."

C.J. Creighton, who had 72 yards on eight carries, and T.J. Knapp, who had 64 yards on four catches, led New Milford.

New Milford is a good team," said Lindine. "Coach Lynch has good squad and has them going in the right direction."

New Milford is host to Immaculate tonight. Game time is 7 p.m.

Bethel 25
New Milford 7

ResultsB2
ScheduleB2

Lindine. "Adam was going to see some time, but Randy was going to be taking most of the snaps."

Pratt played the first offensive series and then was replaced by Lienhardt. After a scoreless first quarter, Bethel forced a turnover and drove 42 yards on four plays ending with a 9-yard touchdown by Anthony Kostek.