

Walk-in Closet Design

Trends for 2015



closet*factory*

the art of organization

2015 WALK-IN CLOSET DESIGN

The past and present colliding

Nature continuing to inspire

Light over dark

The birth of man cave closets

Clothing curating evolves

A **walk-in closet** is now considered both a significant room in the home, performing not only storage duties, but also doubling as a personal oasis. For both men and women, their walk-in closet has evolved into a reflection of who they are; a truly private and personalized place where they can retreat, relax and keep precious possessions.

In designing this special space, many people maximize every inch available to serve organizational needs, while others prioritize creating the right mood and atmosphere. The closet design trends of 2015 will celebrate individuality, creativity with unique character and charming details also playing an important role in defining style.

Connecting the past with the present while mixing a fusion of styles will be the defining signature of design trends in 2015. A wide palette of colors with an emphasis on rich blue hues, watery patterns, eco-friendly materials, exotic botanical and animal motifs combined with metals, mirrors, retro patterns and natural themes will come together in creating stylish, interesting and functional living spaces. Modern, contemporary designs that celebrate versatility will also be popular in furnishing homes and private spaces.

As a tastemaker in the **custom closet** industry and a leader in the art of organization, Closet Factory sets the standards for walk-in closet design. We understand there will be a renaissance of back-to-basics whites on one end of the spectrum while ornate, plush and visually exciting design will command the opposite end.

While both design choices are equally valid, what's common for all is the practice of wardrobe curation in which all that is extraneous is eliminated leaving only what is needed and valued.

Boutique-style displays remain a key style element and debuting in popularity are sitting areas that serve a purpose as well as act as a decorative component proving that more people are viewing their walk-in closets as a place to spend quality time. Combining



the trendsetting elements of function, creativity and style, **Closet Factory's** walk-in closet designs go hand in hand with the versatility and creativity called for by the design tastemakers in 2015.

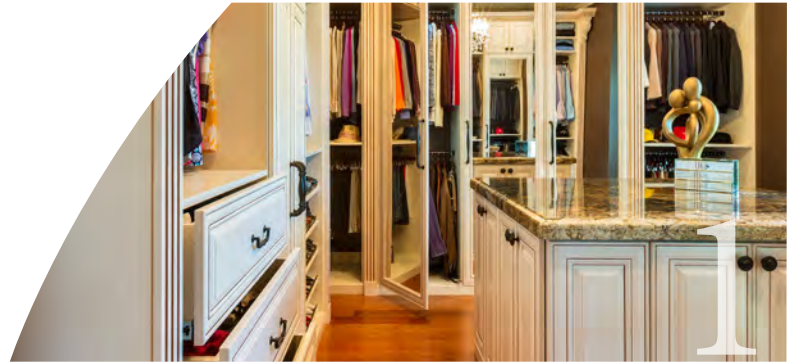


Table of Contents

Trend 1

FIT FOR A QUEEN

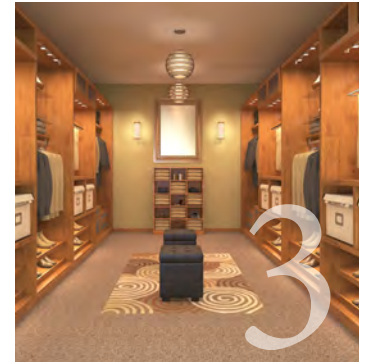
Every woman needs a special place where she can be among her favorite things...



Trend 2

IT'S A MAN'S WORLD

Men are no longer regulated to whatever space the queen deems...



Trend 3

NATURAL ZENSATIONS

The popularity of eco-friendly materials and practices...



Trend 4

FROM EAST TO WEST

From Madison Avenue to Rodeo Drive, a major trend in...

Trend 5

THE STAR TREATMENT

Once upon a time, accessories were relegated to a small section...



Trend 6

FIFTY SHADES OF WHITE

The desire to go back to basics with function as the primary...



Trend 1 *Fit For a Queen*

Every woman needs a special place where she can be among her favorite things and feel like a queen. The boudoirs of the past have become today's large walk-in closets and are designed to suit the mistress' needs while showcasing her wardrobe.

Walk-in ornate design elements fit for a queen include grand corbels, fluted columns and crown molding in

addition to marble or granite-topped islands filled with plush velvet-lined jewelry drawers. Infuse rich and bold colors by painting accent walls in deep jewel tones and select accent pieces in trending shades of blues, pastels and neutral tones.

Royal design elements include crystal knobs, fleurs-de-lys onlays (French accents), raised panel doors and drawer faces. Other must haves include crystal chandeliers,

three-way mirrors to give the illusion of grand palace and jeweled handles decked with Swarovski crystals.

A queen always has a throne, so create a lounge area either on a plush window seat or on an island upholstered with a rich fabric to complement the painted walls, and the castle is complete.



An island topped with marbled granite sits in the midst of this royal walk-in closet with glazed and painted antique white raised panels accented with elaborate fluting, topped with decorative corbels.



Fit for royalty: use handles, knobs and drawer pulls in Swarovski crystals, gold metal or a combination of both.

Trend 2 *It's a Man's World*

*M*en are no longer regulated to whatever space the queen deems she can share. They are now creating their own walk-in closets that can also double as a place where he finally can put all of his stuff. A man's needs are very different from a woman's and since he doesn't have as extensive a wardrobe, he has space for all the extras.

Architects and new home builders recognize this, so today's man cave closet is built for a man's needs; a tech station to charge electronics; a sound system hooked to a wall-mounted TV and double metal rods that provide enough hanging space, so there's no need to reach for anything low. There can even be a special place to store things he'd like to keep private like cigars or special wines.



This man's closet has the look and feel of a gentleman's club, created with stained wood and raised paneling in a mocha finish, crown molding and a beaded base board. The upholstered bench provides a decorative seating area.

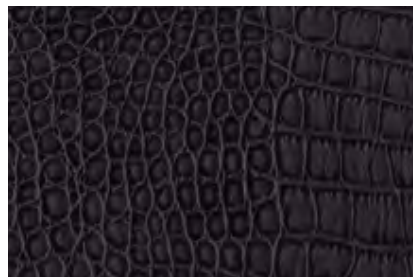
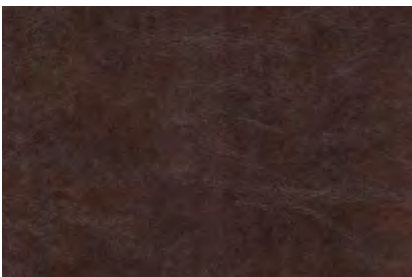


Trend 2 *It's a Man's World*



A custom lighted cigar bar designed in trending aquatic colors of aqua and blue and gray tile.

In line with the trend of aquatic textures, installing unique features like a cigar bar with tiles and countertops in grays and blues fits in perfectly with the latest look. Accent pieces on his walk-in closet include leather-like drawer fronts with metal pulls or metallic finish drawers with leather pulls. Other decorative elements can include pillows covered in geometric patterns or animal prints that sit atop leather upholstered chairs or footstools.



Specialty drawer fronts in a leather, ostrich or alligator material accentuates the trendy animal skin motif and provide stylish texture.



Top off the look with drawer pulls and knobs made of brushed nickel and brown leather.

Or for a metal on leather look, use either brush nickel metal pulls or a combination of wood and silver

Trend 3 *Natural Zensations*

The popularity of eco-friendly materials and practices continues to be a big theme with natural tones and materials remaining at the forefront of designs.



Natural wood combines with soft lighting and earth tones to create an atmosphere of peace and serenity in this zen inspired walk-in closet.

Natural elements and materials like wood, stone, glass and metal will be heavily used to create a contemporary and modern feeling in décor.

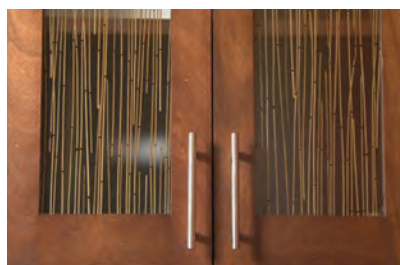
These design elements are easily applied to custom walk-in closets through the use of wood finishes, metal knobs, trim and other embellishments.

Trend 3 *Natural Zensations*

Drawers and doors can be fitted with glass fronts, a bamboo-like finish or have rustic zebrawood drawer and door fronts. Soft, peaceful lighting will be vital to create the atmosphere of peace and serenity, which is easily achieved through backlighting or simple Japanese-inspired light fixtures. Install bamboo flooring or use throw rugs in soft earth tones with a light geometric or botanical pattern to complete the spa-like atmosphere.



A zebrawood finish is used to create this rustic colored walk-in closet that's accessorized with metal handles, a wood bench and bamboo flooring.



Bring an outdoor meadow indoors through this unique combination of color and texture that provides a timeless look, perfect for creating an earthy atmosphere with a sophisticated appeal.



Top off natural wood cabinets with bamboo shaped metal knobs to finish off the look of a zen sanctuary.

Trend 4 *From East to West*



Designed like a modern boutique, this closet was created with silver frost finished cabinetry and metal drawer pulls. White shoe shelves with chrome metal toe stops and glass inserts in the cabinet doors accentuate the sleek gray finish.

From Madison Avenue to Rodeo Drive, a major trend in closet design is creating a walk-in to resemble a high-end boutique. Organization is the key to executing this look, so each custom closet section should be designed to hang or hold specific types of clothing – just as you would see in a well-kept shop.

Clothes and shoes should be displayed according to the seasons and the closet should be well maintained with all the carefully curated wardrobe items neatly folded or hung. Custom painted slat boards attached to fabric treated walls are used to hang beautiful necklaces and scarves.



This full-sized double-decker, black velvet lined drawer is custom made for jewelry but can also be designed to fit specific items such as sunglasses, ties and other accessories.

Trend 4 *From East to West*



For a modern look, closet systems are designed with wood paneling, LED-lit hanging rods, metal accessories and backlit display cubbies. A chic retro boutique can also be created using custom closet systems finished with high gloss or topped with Formica coupled with geometric custom shelves. To complete the look, install a full-length mirror, artwork and stools or chairs in the seating area.



An island with Lucite jewelry drawers is the centerpiece of this boutique walk-in closet designed with various double hanging closet units, custom made to house designer clothes.



LED closet rods in an aluminum finish and unique teardrop shape illuminates any closet with the latest in technology, creativity and energy saving design.

Trend 5 *The Star Treatment*

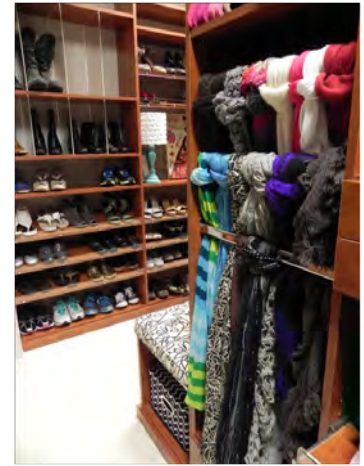
Once upon a time, accessories were relegated to a small section of the closet or a drawer. Now, they've come into their own and have commanded a closet of their own. Accessory closets are especially popular for people with large collections of shoes, purses, hats, sunglasses and other types of eye candy that need to be carefully housed and displayed.

This trend is reflected in creating a room that is a dedicated space full of shoe shelves, purse cubbies and



Gray finished melamine closet units with adjustable shelves are the perfect storage solutions for a large shoe and purse collection.

velvet-lined drawers to showcase watches or other collectibles. Other showcase elements include display cases with raised glass tops that sit atop islands for exhibition and easy access, and floating shelves that are used to showcase the latest acquisition. Just like a clothes closet, an accessories closet is meticulously designed for organization and aesthetics, so that everything has a place and can easily be arranged according to the designer, color or season.



A combination of flat and slanted shoe shelves with Lucite dividers easily store tall boots and low shoes. Metal clothes rods provide a decorative and practical way to organize a multitude of scarves.



Lucite accessory dividers also come in handy in organizing wallets and smaller purses.



Showcase beautiful ties on this unique tie rack made out of a leather covered board that was framed with wood and attached with tie tacks so a man's ties could be distinctly displayed.

Trend 6 *Fifty Shades of White*



The desire to go back to basics with function as the primary goal is driving more design choices. The most versatile color – white in all its incarnations – is still the best canvas from which to create a variety of walk-in closet designs. Using a white finish also helps to accentuate and frame clothing for the best presentation and can come in a variety of looks.

Thick white melamine panels are used to create a sleek and bold but airy modernism. In wood, white provides an elegant, clean look that can be accented with sandblasted, pearly or opaque glass to give it a year-round winter-wonderland feel. The use of interesting hardware also provides just the right accents to complement the color's simplicity. White marble is the ultimate finish and gives anything from counters to flooring an elegant flair.

White on white adds up to simple elegance and beauty. Add texture to white by using embossed décors which add depth and pattern to a translucent surface. Use other fabric decors to create a custom combination with endless possibilities.



This wave emboss exudes contemporary chic and brings even more dimension and organic texture to any white on white color combination.

Recycled Glass panels in a pearl tone are embedded with glass aggregate that is 98%-100% recycled content. Add sparkle to your closet design while being environmentally conscious.

Drawer fronts covered with a leather like material in a white elephant skin pattern provides a frosty white look with a subtle leathery look and feel.

Drawer pulls made of glass and polished nickel adds just the right airy touch

ABOUT CLOSET FACTORY

Closet Factory opened its doors in 1983 in California to provide people with custom closets, offices, entertainment centers, garage systems, pantries, built-in wall units and more. Our expertise, innovation and long experience with organizational systems gives us the ability to forecast important trends in modern closet design.



Beginning with a free, in-home closet design consultation, Closet Factory is dedicated to providing customers with truly custom organization systems. From kid's closets that use adjustable shelves and rods to grow as your child does, to clean and beautiful garages, Closet Factory designs unique, brilliant, and gorgeous systems to organize your life.

Call (800) 838-7995 for a free design appointment or visit us at closetfactory.com.

Contributors and Acknowledgments

Häfele America www.häfele.com/us

Lumicor Inc. www.lumicor.com

Richelieu www.richelieu.com/en