



**PT. INDO RAYA LESTARI**

IT Service & Parts



## COMPANY OVERVIEW



Indo Raya Lestari Co Ltd is a leading Computer Chip-Level Maintenance, Technology & Services outsourcing company in Jakarta, Indonesia.

Indo Raya Lestari Co Ltd is also one of the region's most well-known IT Maintenance & Services outsourcing companies. We work with well-trained professionals & highly-skilled engineer teams from overseas to meet your business needs.

The business scope that Indo Raya Lestari is most specialized in IT Maintenance Services and Warehouse Management & Logistic Services.

Founded in 2010, Indo Raya Lestari Co Ltd is registered under the law of Indonesia.



*“ We value your trust thus strive to consistently deliver the best of our service.”*

### **VISION**

To be the No. 1 Business partner for Global Integrated Aftermarket Services.

### **MISSION**

To provide the most outstanding quality of work to our customers.

To serve customers with integrity & professionalism through excellent services.

To execute projects using service-oriented skills for the ultimate customer satisfaction.

### **BUSINESS VALUES**

**Trustworthiness :** As a company, trust is the foundation that builds the path to our success. We value and uphold the trust that is placed by customers upon a working relationship with Indo Raya Lestari.

**Quality Service :** Indo Raya Lestari strives to deliver only the best quality of service to the customers. By providing the best engineering team of professionals, we can ensure only the most excellent service in the industry for client satisfaction.

**Time Efficiency :** Through our expertise and experience, Indo Raya Lestari is able to apply a high time efficiency that works to benefit our client's business. This also allows a cost-cutting strategy as one of the best advantages there is.





**PT. INDO RAYA LESTARI**

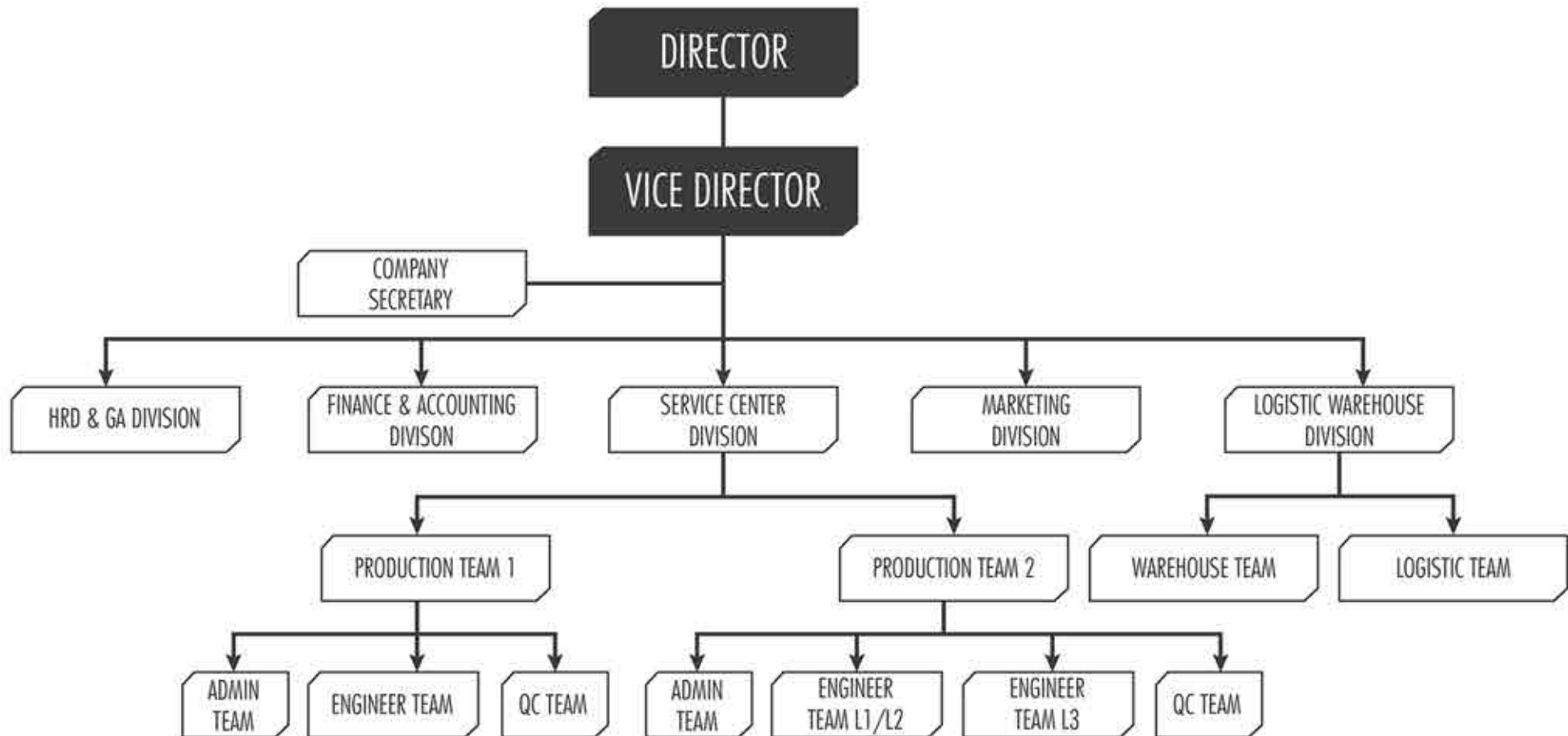
IT Service & Parts

## INDO RAYA LESTARI STRUCTURE ORGANIZE

No. Form: A001/SO/IRL/09/2016

Date : Agt 24, 2016

Vers : 1.3





OUR CLIENTS



**Lenovo**

**MEIZU**



**TOSHIBA**  
Leading Innovation >>>



**Coolpad**

**LAVA**  
MOBILEPHONE



OUR SERVICES



## IT MAINTENANCE SERVICES

Indo Raya Lestari provides IT Maintenance services for :

### **L1/L2 AFTER SALE SERVICE**

for Smartphones and Tablets

Production Capacity: 3.500 pcs / month

### **L3/L4 AFTER-SALE SERVICES**

for Smartphones, Notebook Mainboards, Desktop Mainboards, VGA Cards and LCD Monitors

Production Capacity: 5. 000 pcs / month

### **REWORK SERVICES**

for Smartphones and Notebooks

Production Capacity: customized based on clients' needs





# IT MAINTENANCE SERVICES





## IT MAINTENANCE SERVICES



Indo Raya Lestari strives for perfect IT Maintenance Services by applying a certain work standard such as :

### **Advanced Work Equipment**

Our engineers are equipped with ESD (Electrostatic Discharge) equipment: ESD mat, ESD wrist band, ESD clothes, ESD shoes, etc.

### **High Technology Tools**

We use hi-tech tools: BGA self-aligning welder machine, Oscilloscope, PCB Oven, RF test machine ,etc.

### **Original & Authentic Spare Parts**

Indo Raya Lestari is affiliated with a number of global and official vendors to ensure the originality of the spareparts.





IT MAINTENANCE SERVICES

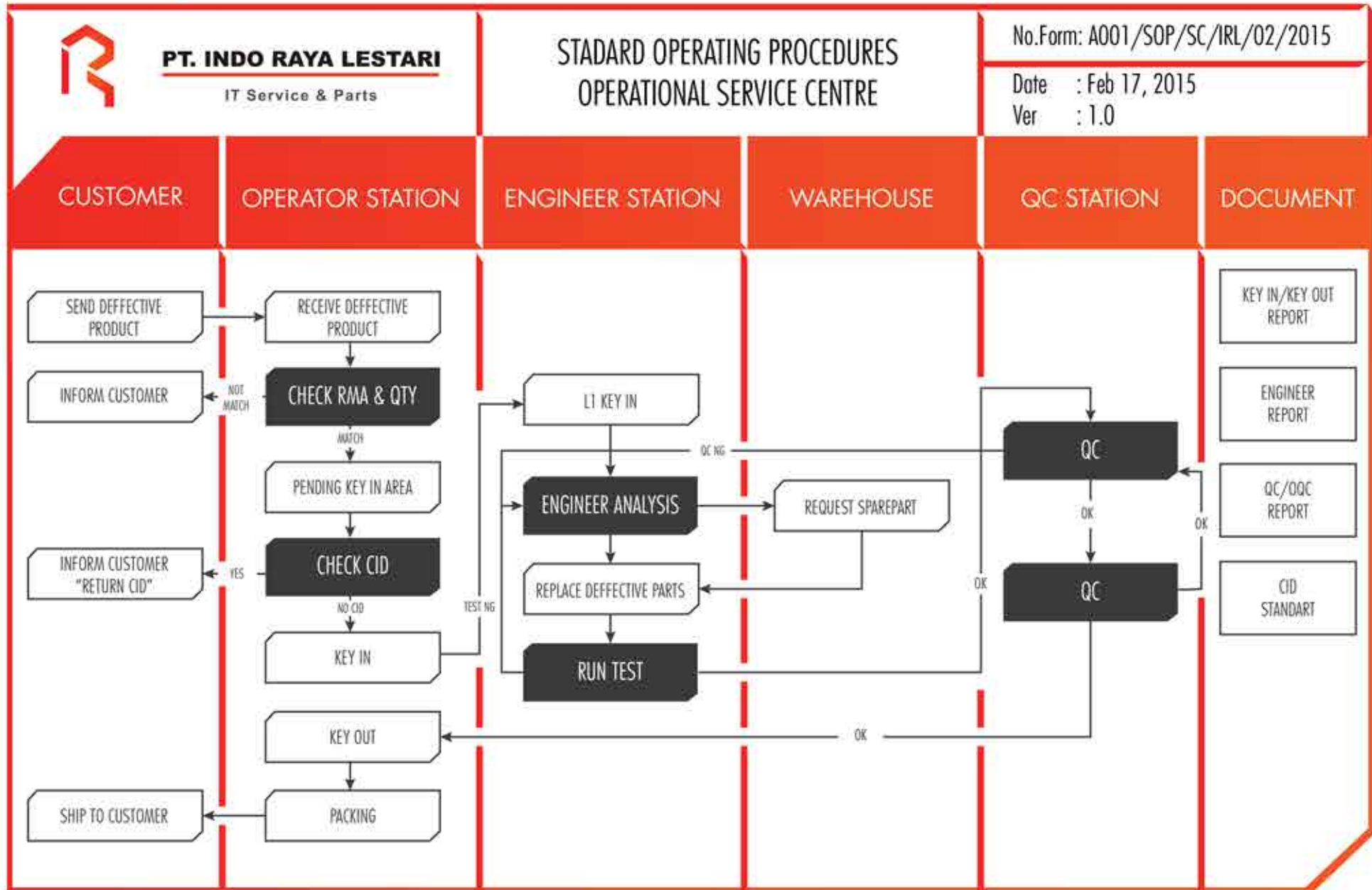


### **Integrated System Software**

Our production is managed well through an integrated system of our software and can be tracking by online system.

# IT MAINTENANCE SERVICES

Our production is control systematically by SOP for all department.





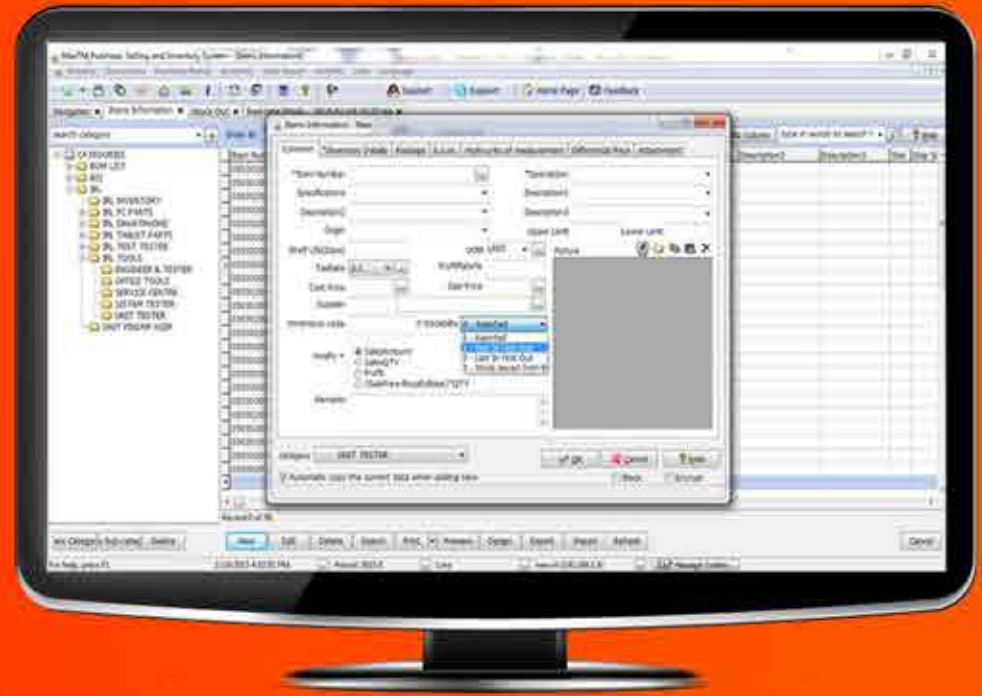


# IT MAINTENANCE SERVICES



L1/L2 Repair Center  
L3/ L4 Repair Center





# WAREHOUSE MANAGEMENT & LOGISTICS SERVICES



**Indo Raya Lestari uses integrated system for Warehouse Management & Logistics Services**



MANAGEMENT TEAM



**The work value of the management of Indo Raya Lestari team :**

- Excellent work quality
- Quick & efficient work services
- Innovative technical solution
- Professionalism & Integrity
- Customer Satisfaction

Indo Raya Lestari Co Ltd works together with a team of highly experienced engineers and RMA Technical consultants from Shanghai- China for the best work and services for the clients.

Currently, our company consists of over 50 personnels, starting from administrative level to management.

## MANPOWER (L3 ENGINEERING TEAM)

DIVISION	NAME	EXPERIENCE	CAPABILITY
PC	2 Engineers	5 years: 1 engineers 3 years: 1 engineers	L3/L4 Analysis & Repair BGA Machine Specialist VGA Card and LCD repair
MIDH	4 Engineers	3 years: 3 engineers	L1/L2 Analysis & Repair
	10 Engineers	5 years: 2 engineers 3 years: 5 engineers 1 years: 3 engineers	L3/L4 Analysis & Repair



## MANPOWER (QC TEAM)

DIVISION	NAME	EXPERIENCE	CAPABILITY
QC	9 Personils	3 years: 4 personils 2 years: 2 personils 1 years: 2 personils	Visual Checking Function Checking



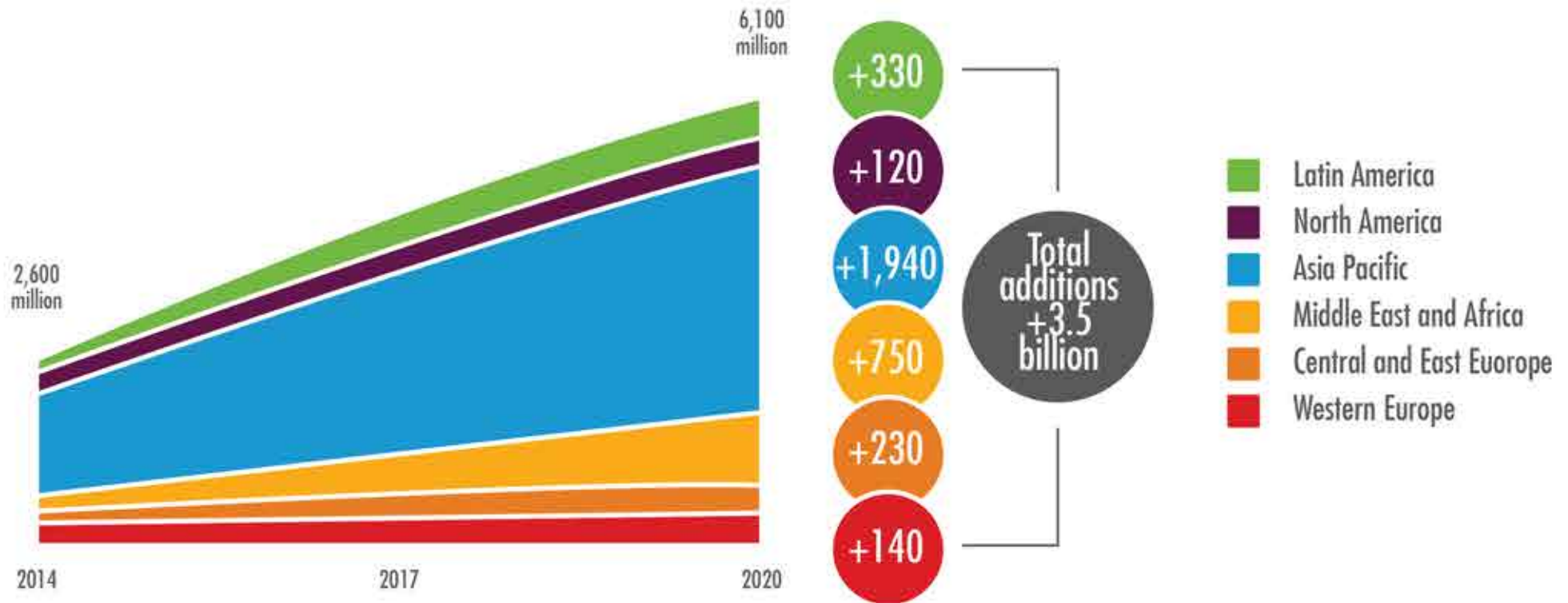


MANPOWER

Production Team



## Smartphone subscriptions per region 2014 - 2020



## FUTURE BUSINESS PROJECTION

Worldwide sales of Android smartphones are projected to increase steadily until the end of 2020 with the rate of up to 24.3% within 5 years period. With up to 1,84 billions units of Android based smartphones to be sold, more products with high specifications will be launched.

As one of the major companies in the IT industry, Indo Raya Lestari understands the importance of being dynamic and flexible in adapting to the current needs of the market. We actively take part in the IT world by dedicating ourselves to the development and growth of promising IT platforms.

We support this growing demand of IT market by providing a lot of related products & services that will continue to be the most demanded items in the world. Grow together with Indo Raya Lestari.

