



SIMPLIFY HYBRID IT WITH A HYPER CONVERGED INFRASTRUCTURE

Gain the Benefits of the Cloud

Integrate for IT efficiency

The demands placed on infrastructure in today's complex working world are changing, but budgets and IT staff availability is not. That's why companies are seeking to modernize and simplify hybrid IT for greater efficiencies. As IT departments strive to gain the benefits of a cloud experience—like faster speed, better economics, and ease of use—they must do so without sacrificing control and security. These common concerns of consuming public cloud send IT leaders seeking superior options.

Traditional IT Environment Pitfalls

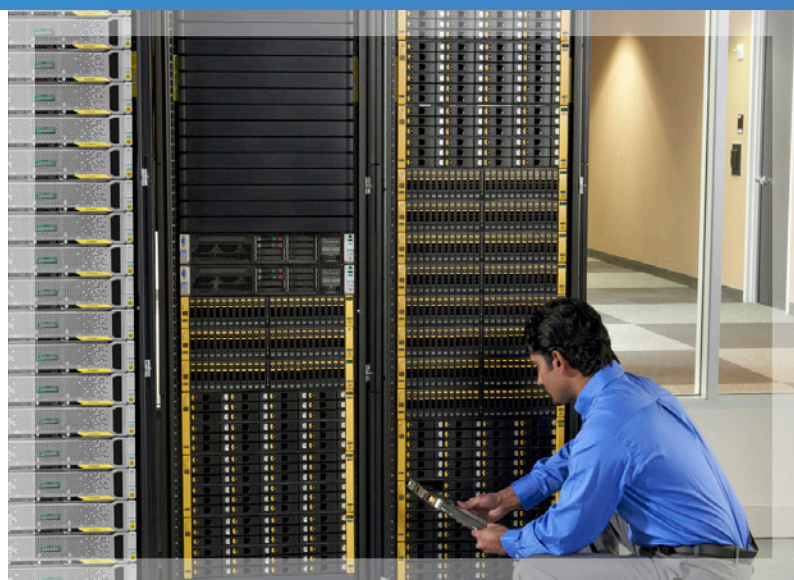
- Virtual Machine (VM) sprawl creates a difficult to manage and complex environment
- Lengthy deployment times, hindered by integration issues, slow business innovation
- Siloed applications and management require substantial budget and time due to the lack of teaming and visibility

Don't Get Left Behind

Drive business innovation and competitive value through modernization of your traditional infrastructure with hyperconvergence.

How?

- Resource elasticity
- Budget-friendly entry point
- Flexible capacity
- Complete virtualization
- Simplicity with no experts needed



Optimize With Hyper Converged Infrastructures

Rather than continuing to add storage devices, services, and more VMs to manage the downfalls of traditional infrastructures, hyper converged systems can be a simple solution. With a single, integrated offering, the software-defined infrastructure leverages a management interface to control computing and storage, while also providing actionable intelligence.

Unlike traditional systems, hyper converged devices can be added to legacy data centers without integration issues, and scale on demand. As an incremental step towards hybrid cloud, the model replaces management islands in favor of elastic capacity that does not require connectivity to SANs.

The Value is Clear

According to IDC, hyper converged sales grew 148.0% year over year during the first quarter of 2016.¹ Businesses are realizing the value of adopting an integrated solution that can provide all compute and storage functions through the same server-based resources.

148%

According to IDC, hyper converged sales grew 148.0% year over year during the first quarter of 2016

HPE SimpliVity 380 Delivers

The HPE SimpliVity 380 solution is the new disruptor in the hyperconvergence market. Combining best-in class data services capabilities and the Hewlett Packard Enterprise best-selling compute platform; this solution offers businesses a big impact, yet is simple to manage.

Customers who use the HPE SimpliVity 380 enjoy these benefits:

Never Over-Provisioning Again—A linear scale-as-you-go approach means never worrying about wasted resources.

Operating Efficiently—Policy-based, VM-centric management means everyone will have a more productive day.

Making Big Data Manageable—No unnecessary processing since all data is de-duplicated, compressed, and optimized at inception.

Less Worrying About Downtime—With set up taking only minutes, deployment doesn't equal downtime for your most precious assets. Plus, with an uptime guarantee of 99.999%,² you're covered.

Saving Money—Compared to the leading public cloud vendor, HPE provides a 35% lower cost solution². When it comes to disaster recovery, customer can also expect to save money through a 62% lower cost than other data protection offerings².



HPE SimpliVity 380

Setting the Stage for Composable Infrastructure

What's the future look like after hyper converged? Composable infrastructure is the next piece of the puzzle.

Designed to help you deploy IT resources in a matter of seconds, composable infrastructure is a new architectural approach focused around three key principles:

1. Fluid Resource Pools
2. Software-Defined Intelligence
3. Unified API

With composability, you can unlock the value of increased productivity and control across data centers through integration and automation you never thought possible. To help you get there, hyper converged puts you on the right path with an intelligence layer integrated with the appliance.

Start Your Journey with the Right Partner

At Technology Integration Group, we have a philosophy that guides our business and technology professionals to work as an extension of our clients. Using overarching business goals, our team at TIG maps out a success journey using the newest digitization opportunities for a comprehensive digital strategy. Through collaboration engagements, our clients realize new customer experiences and workforce optimizations, and facilitate complete transformation in the digital world.

Get on the road to modernization with TIG and HPE SimpliVity 380. To learn more, sign up for our workshop by calling (800) 858-0549.

Technology Integration Group | 10240 Flanders Court | San Diego, CA 92121 |
Email: Don.Husk@TIG.com | Phone: (800) 858-0549 | www.TIG.com

¹ IDC, Worldwide Converged Systems Revenue Increases 11.0% Year over Year in the First Quarter of 2016, Surpassing \$2.5 Billion in Value, According to IDC, June 2016

² Hewlett Packard Enterprise, "Substantiation Document," September 2016.


Hewlett Packard
Enterprise

Platinum
Partner

Hewlett Packard Enterprise specializations include Platinum: Converged Infrastructure, Networking; Silver: Security. The information contained herein is subject to change without notice. The only warranties for Hewlett Packard Enterprise products and services are set forth in the express warranty statements accompanying such products and services. Nothing herein should be construed as constituting an additional warranty. Hewlett Packard Enterprise shall not be liable for technical or editorial errors or omissions contained herein.

© 2017 Technology Integration Group