







W

NO PARKING

NO PARKING

# HEALTH SCIENCES

A decorative dotted line graphic consisting of a horizontal line that curves upwards and then continues horizontally to the right.

The Health Sciences Programs at Santa Fe College offer a variety of degrees and certificates in health care that lead to high wage, high demand careers with outstanding opportunities for professional development. Programs include certificates, advanced technical certificates, associate degrees and bachelor's degrees. These programs are designed to be accessible to non-traditional students and are offered in response to the current healthcare needs of our community.

Accreditation information for Health Sciences programs is located on page 16.

A decorative dotted line graphic consisting of a horizontal line that curves upwards and then continues horizontally to the right.





## CERTIFICATES AND DEGREES DEFINED

---



### CERTIFICATE

---

Certificate programs offer postsecondary adult vocational courses to prepare you for entry directly into employment. Certificates do not require 60 credit hours of college course work. However, students must meet specific basic skills requirements in English, math and writing. A certificate typically takes six months to two years to complete.

**Advanced Technical Certificates** require that that you have earned an A.A. or A.S. degree prior to admission to the program.



### ASSOCIATE OF SCIENCE

---

The Associate of Science (A.S.) degree program is designed to get you ready for a career, but in some cases it may transfer to a bachelor's program. A.S. programs are a good balance of general education coursework and hands-on training with the end goal of preparing you to enter the workforce with a competitive skill set. The A.S. degree typically takes two years to complete.



### BACHELOR'S DEGREE

---

A bachelor's degree is the highest degree you can achieve in undergraduate education. Santa Fe College offers Bachelor of Science (B.S.) and Bachelor of Applied Science (B.A.S.) degrees in certain program areas. For most, a bachelor's degree at SF is the next step after obtaining an A.A. or an A.S. degree. It allows students to continue to build skills and advance in a career field. A bachelor's degree typically requires two additional years after completing an A.A. or A.S. degree.

## PROGRAMS OFFERED

---

- Cardiovascular Technology
- Computed Tomography
- Dental Programs
- Diagnostic Medical Sonography
- Nuclear Medicine Technology
- Nursing Programs
- Polysomnography
- Radiography
- Respiratory Care
- Surgical Technology





## CARDIOVASCULAR TECHNOLOGY

### **ASSOCIATE OF SCIENCE DEGREE (A.S.)**

As a cardiovascular technologist, you will work in a hospital or medical center, clinic, physician's office or mobile diagnostic unit, assisting the physician in performing procedures to diagnose and care for cardiovascular related illnesses.

In this program, you will complete classroom and laboratory instruction in three sub-specialty areas and then select one area for clinical specialization.

**TIME TO COMPLETION:** Five semesters | **AVERAGE SALARY:** \$52,000

## NUCLEAR MEDICINE TECHNOLOGY

### **ASSOCIATE OF SCIENCE DEGREE (A.S.)**

Nuclear Medicine Technology is a medical specialty in which low-level radioactive materials are used for diagnosis and treatment of disease. As a nuclear medicine technologist, you will work in one of three major areas: organ imaging, radionuclide analysis or radionuclide therapy. You will also operate machinery and maintain records. You may also choose to pursue additional credentials in fields such as CT and PET scanning.

**TIME TO COMPLETION:** Five Semesters | **AVERAGE SALARY:** \$50,000



## RADIOGRAPHY



### ASSOCIATE OF SCIENCE DEGREE (A.S.)

Radiographers operate an array of computerized imaging equipment in hospitals, clinics, doctor's offices and imaging centers to assist in diagnosing disease and injury. Upon completion of this program, you will be eligible to sit for the national certification examination given by the American Registry of Radiologic Technologists (ARRT). Radiographers certified by ARRT are eligible for state of Florida licensure as certified radiologic technologists without additional testing.

**TIME TO COMPLETION:** Five semesters | **AVERAGE SALARY:** \$37,000

## RESPIRATORY CARE



### ASSOCIATE OF SCIENCE DEGREE (A.S.)

Respiratory therapists perform diagnostic tests, such as measuring lung capacity, and consult with physicians to develop patient treatment plans. Upon completion of this program, you are qualified to take all of the credentialing examinations offered by the National Board for Respiratory Care. As a licensed respiratory therapist, you may choose to enroll in a physician assistant or anesthesiologist program, or medical school.

**TIME TO COMPLETION:** Two years | **AVERAGE SALARY:** \$46,000





## DIAGNOSTIC MEDICAL SONOGRAPHY

### **CERTIFICATE**

Sonography— often referred to as an ultrasound—uses high-frequency sound waves to produce visual images of organs, tissues or blood flow inside the body. The professionals who perform these procedures are known as sonographers. As a sonographer, you are responsible for performing various sonographic exams for diagnoses of tumors, malfunction of organs or evaluation during pregnancy. You will also maintain records and equipment and order supplies.

**TIME TO COMPLETION:** Five semesters | **AVERAGE SALARY:** \$45,000

## COMPUTED TOMOGRAPHY (CT)

### **ADVANCED TECHNICAL CERTIFICATE**

This online program is designed for certified radiographers, nuclear medicine technologists and radiation therapists, offering you the opportunity to qualify to take the CT certification examination. As a certified CT technologist, you will use computer-based imaging systems to construct three-dimensional images of organs to aid in the diagnosis of disease or injury.

**TIME TO COMPLETION:** Two semesters | **AVERAGE SALARY:** \$45,000



## POLYSOMNOGRAPHY

### **ADVANCED TECHNICAL CERTIFICATE**

Polysomnography is the test used to diagnose and treat sleep disorders. In this program, you will learn about the different stages of sleep and treatment for the most common form of obstructive sleep apnea. Upon completion of this program, you will be eligible to take the national exam to become a registered polysomnography technologist. As a polysomnography technologist, you will be responsible for conducting sleep studies and analyzing results.

**TIME TO COMPLETION:** Two semesters | **AVERAGE SALARY:** \$47,000

## SURGICAL TECHNOLOGY

### **CERTIFICATE**

The certificate program in Surgical Technology prepares you to be a qualified surgical technologist—a key member of the surgical team responsible for passing sterile instruments, supplies and other equipment to the surgeon. Job opportunities also exist in specialized laboratories, emergency departments and ambulatory care centers, or in sales or management.

**TIME TO COMPLETION:** 14 months | **AVERAGE SALARY:** \$32,000





## NURSING ASSISTANT

### CERTIFICATE

The Nursing Assistant certificate program prepares you for employment in a nursing home or extended care facility. You will study both in the classroom and at local nursing homes. Upon successful completion of this program, you will be eligible to sit for the State Certified Nursing Assistant examination.

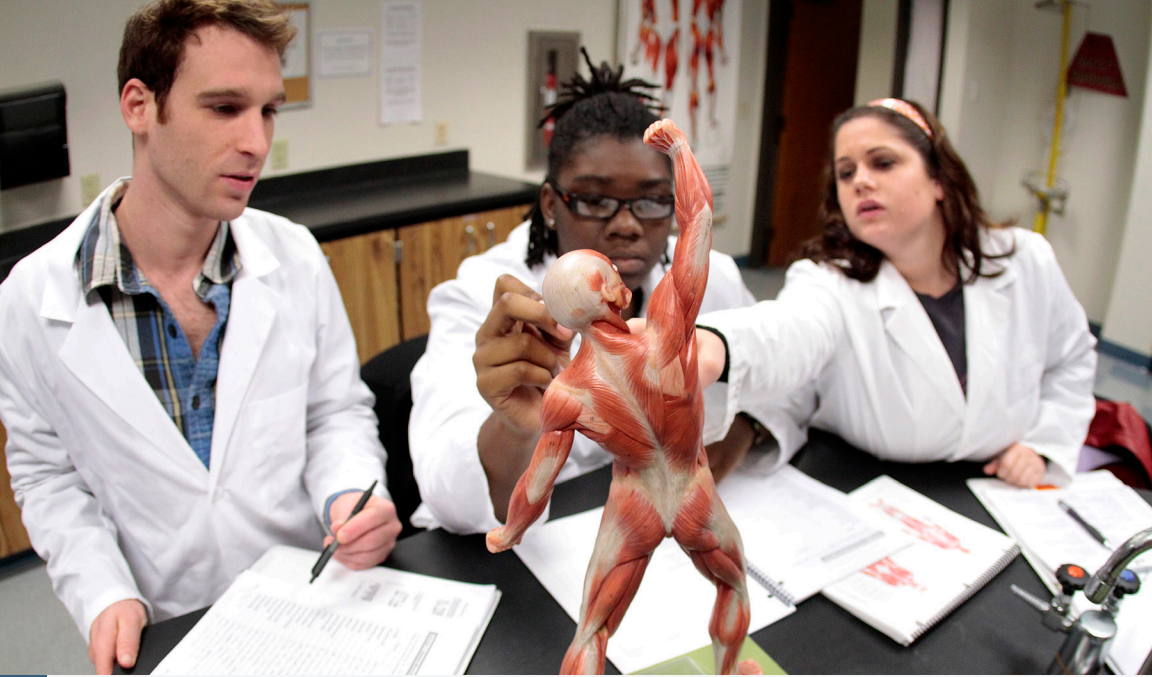
**TIME TO COMPLETION:** 7 weeks | **AVERAGE SALARY:** \$22,000

## PRACTICAL NURSING

### CERTIFICATE

The Practical Nursing certificate program has no prerequisites and prepares you to take the national licensure exam to become a licensed practical nurse (LPN) through the Florida Board of Nursing. As an LPN you can work in a variety of health care settings such as a nursing home or physician's office, providing direct patient care and working jointly with registered nurses.

**TIME TO COMPLETION:** 2.5 semesters | **AVERAGE SALARY:** \$30,000



## NURSING



### ASSOCIATE OF SCIENCE DEGREE (A.S.)

The Associate of Science in Nursing program prepares you to take the national licensure exam to become a registered nurse (RN), licensed through the Florida Board of Nursing. As a registered nurse, you can work in a variety of health care settings, assessing patients and planning and providing patient care. Or, you may choose to continue your education to earn nursing degrees at the bachelor's, master's or doctoral level.

**TIME TO COMPLETION:** Five semesters | **AVERAGE SALARY:** \$40,000

## NURSING / LPN TO RN BRIDGE



### ASSOCIATE OF SCIENCE DEGREE (A.S.)

If you already have a Practical Nursing certificate and are licensed as an LPN, you will receive 10 credits toward your A.S. degree through the Associate of Science in Nursing Bridge Program. This program prepares you to take the Florida licensure examination to become an RN. As a registered nurse, you can work in a variety of health care settings or you may choose to continue your education to a higher level.

**TIME TO COMPLETION:** 4.5 semesters | **AVERAGE SALARY:** \$40,000





## NURSING / RN TO BSN BRIDGE



### **BACHELOR OF SCIENCE DEGREE (B.S.)**


If you already have an A.S. degree in nursing, the RN to BSN completion program will prepare you to continue your nursing career and advance to a higher level with a bachelor's degree. This program was designed for the working nurse, offering flexible scheduling and online courses, but can also accommodate full-time students. Admission to the program requires an Associate of Arts degree, graduation from an accredited ASN Program, 2.5 college GPA, and a current license as an RN.

**TIME TO COMPLETION:** 2.5 semesters, full time | **AVERAGE SALARY:** \$50,000






## GRADUATE SPOTLIGHT: BRIDGET MOSS



Bridgette Moss has the distinction of being a part of the class of 2014 — the first Santa Fe College class to graduate with a bachelor's degree in nursing through the RN to BSN program. This program allows nurses who have completed an A.S. in nursing and are currently working in the nursing profession to obtain a bachelor's degree.

“The convenience of this program is invaluable,” Moss said. “To be able to continue to work while earning my degree made it possible for me to go back to school.”

Moss continues to work as a nurse at UF Health Shands Rehab Hospital where she was employed during her participation in the RN to BSN program. UF Health Shands Rehab Hospital is a Santa Fe College community partner.





## DENTAL ASSISTING

### **CERTIFICATE**

The Dental Assisting certificate program prepares you to take the Dental Assisting National Board's certification exam. As a dental assistant, you will perform supportive functions in a dental office such as taking medical histories, recording vital signs, maintaining equipment and performing chairside functions and office procedures.

**TIME TO COMPLETION:** Three semesters | **AVERAGE SALARY:** \$25,000

## DENTAL HYGIENE

### **ASSOCIATE OF SCIENCE DEGREE (A.S.)**

The Dental Hygiene A.S. degree program prepares you for national certification and state licensure as a dental hygienist. As a dental hygienist, you will work in a dental office performing functions such as scaling and polishing patients' teeth, taking x-rays, administering local anesthesia and providing other dental treatments. Career opportunities exist in private dental practice, public health, and teaching.

**TIME TO COMPLETION:** Two years | **AVERAGE SALARY:** \$37,000





## DENTAL ASSISTING TO DENTAL HYGIENE BRIDGE



### ASSOCIATE OF SCIENCE DEGREE (A.S.)

If you have already completed an accredited dental assisting program, are certified by DANB and have one year of chairside dental assisting experience after graduation, you qualify for the Dental Hygiene bridge program. In this program, you will earn your A.S. degree and be prepared for national certification and state licensure as a dental hygienist.

**TIME TO COMPLETION:** Four semesters | **AVERAGE SALARY:** \$37,000



## DID YOU SEE A PROGRAM THAT INTERESTS YOU?

### TAKE THE FIRST STEP:

The first important step in exploring an exciting career in Health Sciences is to attend a group advisement session. Group advisement will assist you in choosing the right educational path as well as understanding the application and selection process for these limited enrollment programs.

Group Advisement sessions are held every **Tuesday at 3 p.m. in the Health Sciences Annex (Building WA)**. There are no advisement sessions during college holidays or when otherwise noted.

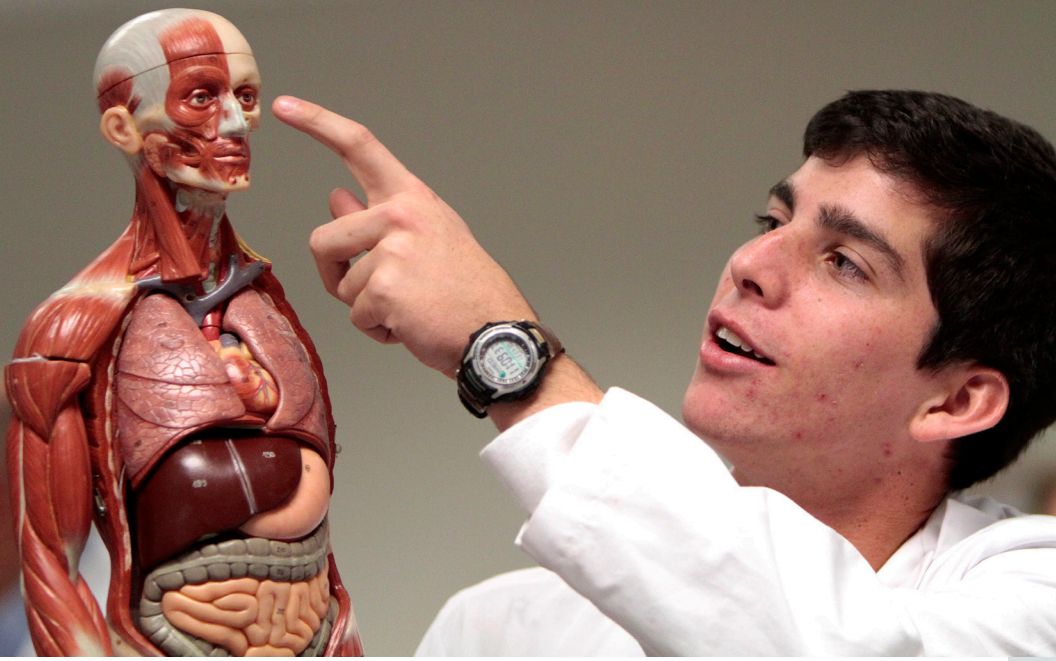
### TOPICS COVERED:

Topics covered during group advisement include:

- Differences in Health Sciences programs and professions
- Career and educational opportunities after graduation
- Application requirements for limited enrollment programs
- Selection process for admission

No appointment is necessary and all group advisement sessions are free and open to the public. Building WA is located next to Building W, across from the SF baseball and soccer fields on South Road. Posted signs will indicate the group advisement session room number.





## DIRECTORY **INFORMATION**

[www.sfcollege.edu/healthsciences](http://www.sfcollege.edu/healthsciences)  
352-395-5650

### **LOCATION:**

3000 NW 83rd St.  
Building W  
Gainesville, FL 32606



## ACCREDITATION INFORMATION

The BSN Program is accredited by the Commission on Collegiate Nursing Education (CCNE), 1 DuPont Circle NW, Suite 530, Washington, D.C., 20036.

The Associate of Science in Nursing Program and the Associate of Science in Nursing Bridge Program are accredited by the Accreditation Commission for Education in Nursing (ACEN), 3343 Peachtree Rd. NE, Suite 850, Atlanta, GA, 30326.

The Practical Nursing Program is approved by the Florida Board of Nursing, 42052 Bald Cypress Way, Bin C-02, Tallahassee, FL, 32399.

The Dental Assisting and Dental Hygiene programs are accredited by the American Dental Association, 211 East Chicago Ave., Chicago, IL, 60611.

The Surgical Technology, Cardiovascular Technology, Diagnostic Medical Sonography and Polysomnography programs are accredited by the Commission on Accreditation of Allied Health Education Programs (CAAHEP), 1361 Park St., Clearwater, FL, 33756.

The Surgical Technology Program is accredited by the Accreditation Review Committee on Education in Surgical Technology and Surgical Assisting (ARC-STSA), 6 W. Dry Creek Circle, Suite #110, Littleton, CO, 80120.

The Nuclear Medicine Technology Program is accredited by the Joint Review Committee on Education in Nuclear Medicine Technology (JRCNMT), 20 N. Wacker Dr., Suite 2850, Chicago, IL, 60606.

The Radiography Program at Santa Fe College is accredited by the Joint Review Committee on Education in Radiologic Technology (JRCERT), 20 N. Wacker Dr., Suite 2850, Chicago, IL, 60606.

The Respiratory Care Program is accredited by the Commission on Accreditation for Respiratory Care (CoArc), 1248 Harwood Rd., Bedford TX, 76021.



## EA/EO & ACCREDITATION

### NOTICE OF EQUAL ACCESS/EQUAL OPPORTUNITY AND NONDISCRIMINATION

---

Santa Fe College is committed to an environment that embraces diversity, respects the rights of all individuals, is open and accessible, and is free of harassment and discrimination based on, but not limited to, ethnicity, race, creed, color, religion, age, disability, sex, marital status, national origin, genetic information, political opinions or affiliations, and veteran status in all its programs, activities and employment. EA/EO notice Inquiries regarding non-discrimination policies should be directed to: Lela Frye, Equal Access/Equal Opportunity Coordinator 3000 NW 83rd Street, R-Annex, Room 105, Gainesville, Florida 32606, (352) 395-5420, lela.frye@sfcollege.edu.

### SACSCOC ACCREDITATION STATEMENT

---

Santa Fe College is accredited by the Southern Association of Colleges and Schools Commission on Colleges to award associate and baccalaureate degrees. Contact the Commission on Colleges at 1866 Southern Lane, Decatur, Georgia 30033-4097 or call 404-679-4500 for questions about the accreditation of Santa Fe College.

*The purpose for publishing the Commission's address and contact numbers is to enable interested constituents*

*(1) to learn about the accreditation status of Santa Fe College,*

*(2) to file a third-party comment at the time of Santa Fe's decennial review, or*

*(3) to file a complaint against Santa Fe College for alleged non-compliance with a standard or requirement.*

To find out more about the college's accreditation status, visit the SACSCOC website and type in Santa Fe College in the Search By Institution Name or Keyword search box.

*To learn more about college admission requirements, financial aid, educational programs, etc., please contact Santa Fe directly.*



Paid for by funds granted under the federal Carl D. Perkins Act.  
Produced by SF Communications & Creative Services.