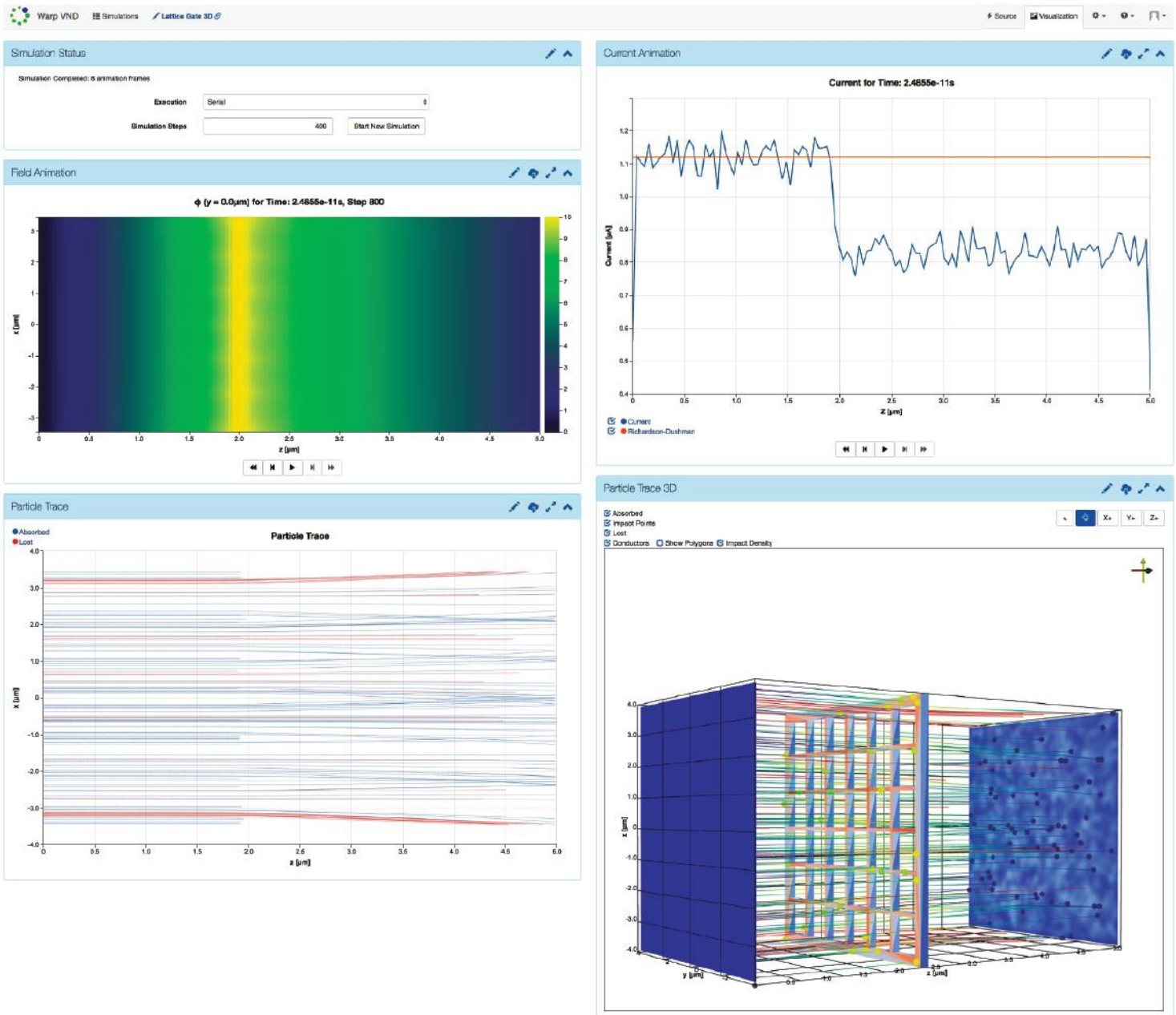


Tools are meant to be shared.



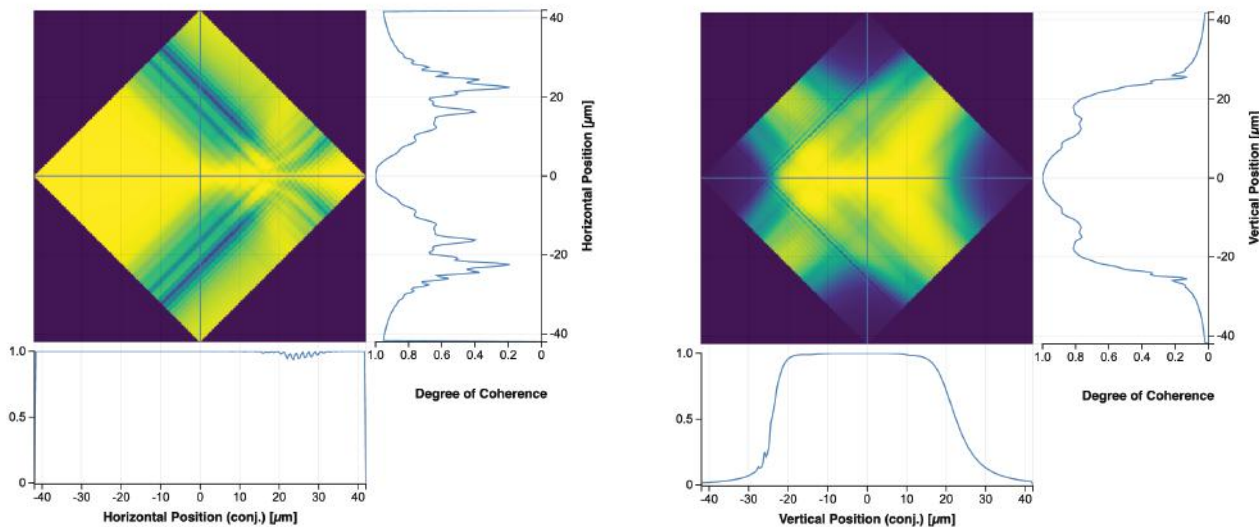
Scientific labs invest significant time and money into developing codes, but getting a good ROI is difficult. Command line interfaces (CLIs) are tough to master, hard to share within teams, and look dated.

They can also present other challenges:

- Difficultly onboarding new hires because they can't immediately contribute to projects dependent on CLI code.
- Unnecessary rework and rebuilds because CLI dependence fostered siloing and inaccessibility.
- Inefficient and wasteful investment in new code development because employees don't share tools.
- Extra time and cost around employee transitions because code documentation is sparse or nonexistent.

RadiaSoft Consulting

GUI Conversion Services for Companies and Scientific Labs



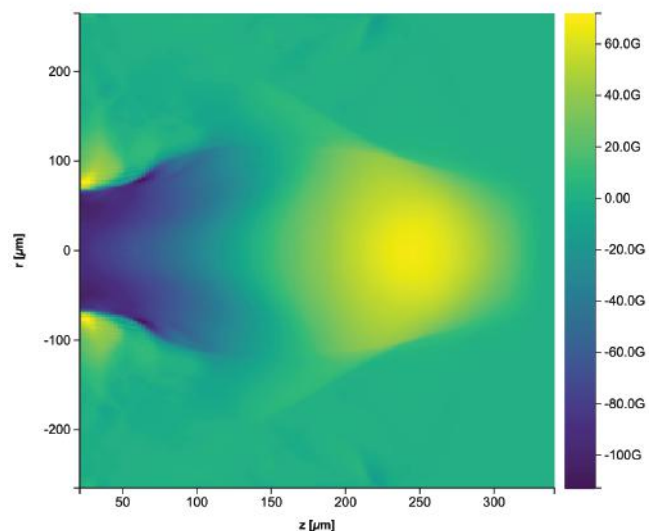
Our GUI Conversion services enable labs to unlock the full potential of their command-line codes

- Transforming command-line codes into fully functional GUI tools makes solutions instantly accessible to your entire lab.
- Wrapping CLI code in a GUI enables knowledge reuse, freeing up valuable resources.
- New hires and scientists benefit from better accessibility, improving productivity and retaining valuable legacy knowledge.
- GUIs lower the expense and burden of documentation, uncomplicating succession planning.

Share your tools

Our expert team of software engineers, scientists, and project managers offers a unique blend of skills, experience, and ingenuity necessary to take your legacy codes to the next level. We welcome the opportunity to collaborate with you.

E z in the mode 0 at 1126.7 fs (iteration 300)



Learn more:



info@radiasoft.net



720-502-3928

 **radiasoft**
www.radiasoft.net