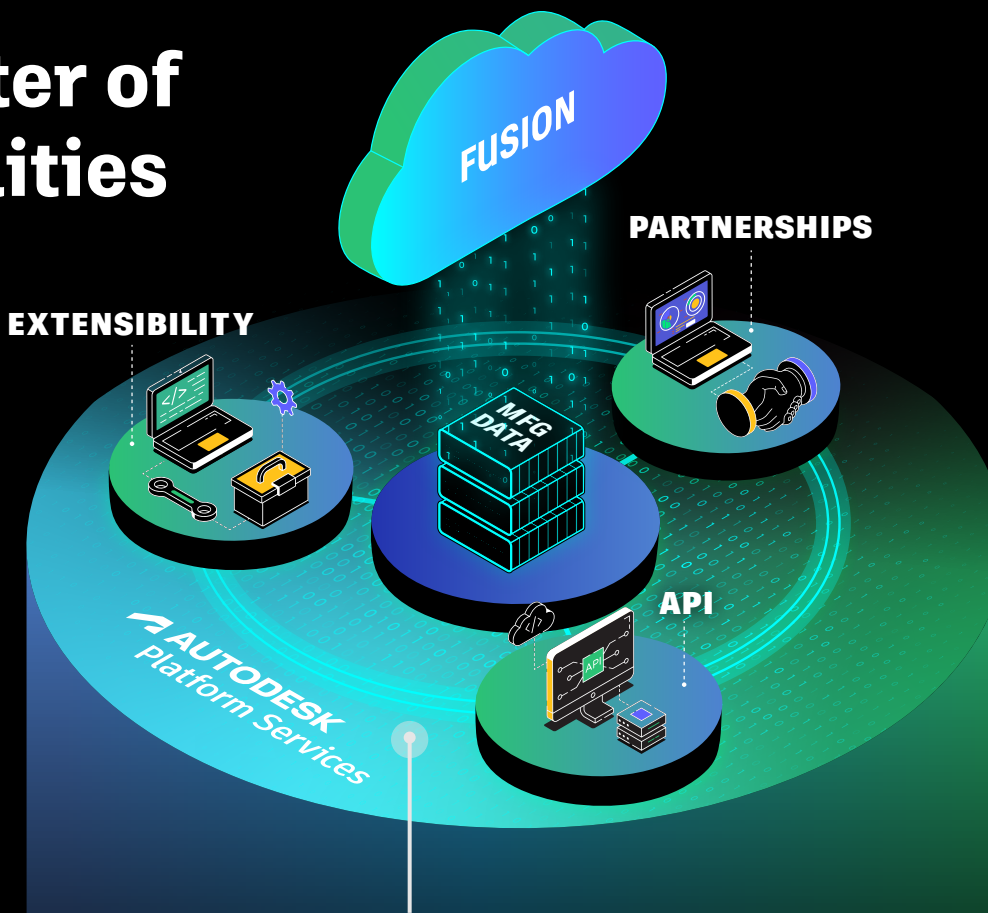


# Data at the center of infinite possibilities

Autodesk Fusion, the industry cloud for manufacturing, is equipping businesses to confidently improve collaboration, find new efficiencies, and unlock creativity and expertise for even the most complex projects. Whether you are problem-solving in a small shop or working from the heart of an industrial giant, Fusion's integrated capabilities let you draw a direct line between an ambitious vision, impressive throughput, and a successful final product.



## The anatomy of an industry cloud

**Data at the center:** Every project is built on a single source of truth, from initial design through market release.

**Surrounded by core capabilities:** API access, extensibility, and a rich partner ecosystem provide for powerful, flexible, and interconnected workflows.

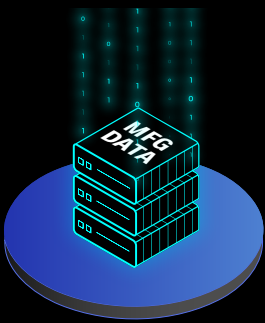
**Built on a platform for growth:** Autodesk Platform Services delivers the foundational infrastructure for scalability, security, and integration across the Autodesk ecosystem.

## Uniting your existing capabilities to spur innovation, increase operational efficiency, and boost agility

Fusion is built to integrate and amplify the value of the solutions you already use every day. It's made for you—to help you embrace the full potential of digital transformation and open up new possibilities.

**Rather than adding a new layer to your tech stack, Fusion unites existing capabilities**—connecting data and people to spur innovation, increase operational efficiency, and boost agility.

## An industry cloud built for how you work



### Data management: A centralized strategy

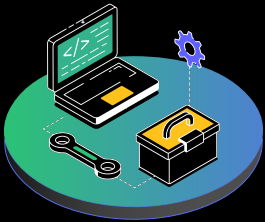
Digital transformation is about what can happen when the right data—not files or programs—is at the center of every workflow. Unlocking the most important, relevant, and urgent model-based data increases efficiency, reduces room for error, and allows for automation that eliminates repetitive tasks.



### API access: Limitless customization and accelerated innovation

Open API (Application Programming Interface) access means users and developers can create the custom applications and integrations they need, exactly when they need them—getting the benefits of digital integration without the disruption associated with new technology.

The open API ecosystem means that each new tool can be shared with a growing community of users. That's important for your team, but it's also important for every connected partner who can continue building upon advances as they happen.



### Extensibility: The key to advanced design & manufacturing technology

Fusion extensions allow you to enhance and customize your software environment by adding specific functionalities needed for their manufacturing processes.

Extensibility allows you to add highly specialized capabilities like complex machining strategies, generative design, and additive manufacturing workflows.



### Partnership ecosystem: From the cloud to the shop floor

Autodesk has cultivated a rich partner ecosystem that contributes to Fusion. This network of hardware, software, and service partners includes technology providers, system integrators, and third-party developers, all of whom enhance the platform's capabilities and ensure it meets the broad and evolving needs of the manufacturing industry.

These partnerships ensure that Fusion remains a cutting-edge solution for modern manufacturing challenges.



### Autodesk Platform Services: The vision and the roadmap

Autodesk Platform Services (APS) opens a future of possibility that the design & manufacturing industry could only imagine a decade ago. By building Fusion from within APS, Autodesk has primed it for continual evolution and expansion.

APS provides the foundational cloud infrastructure that enables the development and running of applications. It supports scalability, security, and integration across the Autodesk ecosystem, and it enables users to enhance their applications' functionality and integration within the Autodesk ecosystem.

## The promise of a new era for design and manufacturing

The digital revolution has spurred the era of Industry 4.0, defined by automation and interconnectivity, data-driven decision making, and technology integration. It has made incredible things possible, but it's just the prelude. We're now on the path to Industry 5.0, which puts the human at the forefront. This is a future that Autodesk is committed to supporting.

It may seem counter-intuitive that the emergence of AI, increased automation, and even the convergence of industry is human-centric, but that's exactly what we're already seeing. The technology that Fusion enables today is empowering designers, engineers, and the teams they work in to be more creative, bolder and more willing to explore possibilities than ever before.

[Learn more about everything Fusion can do for your design & manufacturing practice.](#)

