



**MAGICAL MANGAWHAI**

**LUXURY LADIES'**

*Pamper Weekends*

**Exclusive offer for Venus Network  
members & friends**

**RECHARGE AND REFRESH  
MIND AND BODY IN A BEAUTIFUL SETTING.**

**25 FEB - 25 MAR, 2021.  
FROM \$999 PER PERSON.**

**For more details and to secure your booking, contact:  
Cindy Bakewell  
TAANZ Bonded Travel Adviser  
0800 142 4639  
[cindy@privatetravel.co.nz](mailto:cindy@privatetravel.co.nz)**



**CINDY  
BAKEWELL**

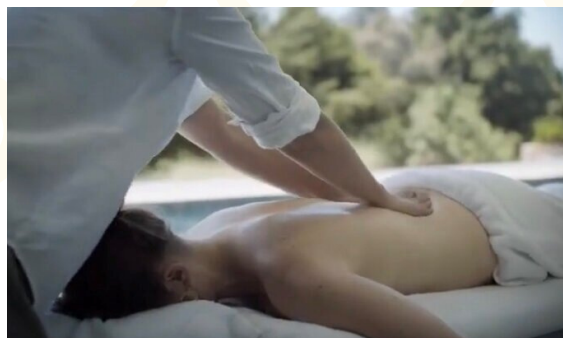
ELITE TRAVEL EXPERIENCES



## What's included

Your decadent long weekend package includes the following for you to enjoy:

- Return transport from Auckland CBD to Mangawhai in a private mini-van.
- 3 nights at Clareview B&B, including cooked breakfast daily.
- Picnic hamper and 2 bottles of local wine to enjoy on day of arrival.
- A half-hour relaxation massage or facial therapy treatment each.
- Visit to Mangawhai Museum.
- Mangawhai Wine Trail, with wine tasting at Millar's vineyard and Te Whai Bay Wines, including a tasting platter and return transport.
- Chocolate tasting at the famous Bennett's chocolate factory.
- Private transport as mentioned in the itinerary.



Contact Cindy today and start looking forward to your pamper weekend!

[cindy@privatetravel.co.nz](mailto:cindy@privatetravel.co.nz)

Ph 0800 142 4639



CINDY  
BAKEWELL

ELITE TRAVEL EXPERIENCES





# Detailed itinerary

## **Thursday**

At 2pm you will be collected from Auckland CBD in a private mini-van and driven up to Magical Mangawhai for a relaxing long weekend.

After your check-in at Clareview B&B, you will have plenty of time to relax and enjoy the beautiful views of Mangawhai from the property, while enjoying a picnic hamper and a glass of wine.

## **Friday**

On Friday morning, after a delicious cooked breakfast, the wonderful therapists from the Te Arai Wellness Collective will be at Clareview to pamper you with a relaxation massage or facial therapy treatment. Around lunchtime your driver will take you to the Mangawhai Museum, one of New Zealand's best regional museums. After a short visit you will continue to Mangawhai Heads where you can browse the shops and cafes, before stopping at Mangawhai Heads surf beach. You will have the rest of the afternoon at leisure for swimming, sunbathing, or if you feel energetic you could walk the famous Mangawhai clifftop walk (2.5 hours roundtrip).

Late afternoon your driver will return to pick you up from the beach and take you back to your accommodation to freshen up before going out to dinner. We recommend the French inspired cuisine at 'Frog & Kiwi' ([www.frogandkiwirestaurant.co.nz](http://www.frogandkiwirestaurant.co.nz)). Return transport will be provided tonight, however meals are not part of the package price.

## **Saturday**

After your delicious cooked breakfast, you might like to walk to the popular tavern market at Mangawhai village (about 15 mins walk), a local farmers market where you'll find gourmet food, coffee, local arts and crafts and Mangawhai souvenirs. In the afternoon (3pm) you will be picked up from your accommodation to experience the 'Mangawhai wine trail' with visits and wine tastings at Millar's Vineyard and Te Whai Bay Wines. At the latter you'll sample up to 7 wines accompanied by a gorgeous tasting platter. And of course, you don't need to worry about drinking and driving as your driver will take you back to your accommodation. For dinner we suggest you try 'The Dune' ([www.dunemangawhai.co.nz](http://www.dunemangawhai.co.nz)) in the Mangawhai village. Return transport will be provided tonight (meals not included in package price).

## **Sunday**

After checking out at 10am, you'll visit the famous Bennett's Chocolate Factory and café ([www.bom.co.nz](http://www.bom.co.nz)), for some exquisite chocolate tasting followed by a visit to the café for a lovely Bennett's mocha and perhaps some brunch (not included in package price), before your driver takes you back home to Auckland.